

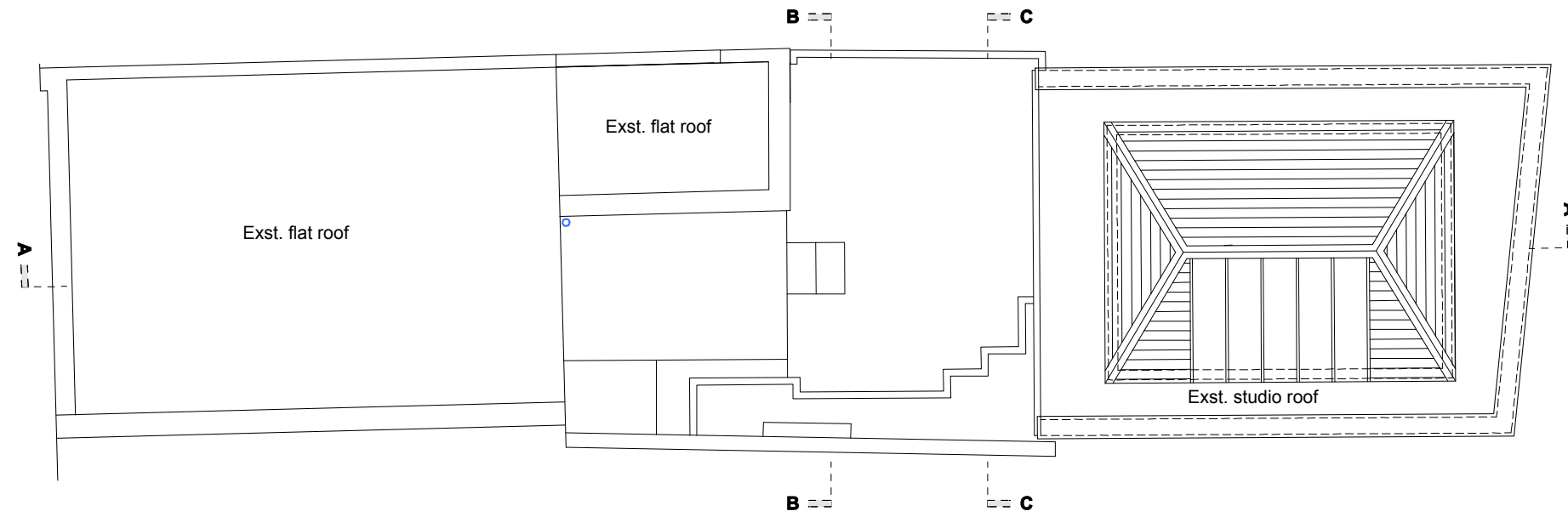


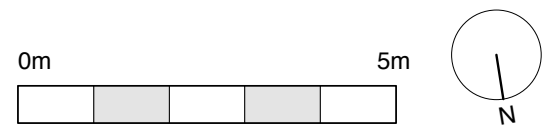
General Notes
 Do not scale from this drawing
 All dimensions to be verified on site
 To be read in conjunction with all relevant documents
 In the event of discrepancy notify the Architect immediately
 This document is copyright of Hugh Cullum Architects Ltd

Issue Status
 SK Sketch E Existing Condition
 D Design P Permissions
 T Tender C Contract

 New Construction
 Demolished Construction



Roof Plan



AS EXISTING _ Roof Plan

(_): Issued for planning application (12.04.17/GW)
 Revision: Information (date/drawn by/checked by)

HUGH CULLUM ARCHITECTS LTD 16 New End Square
 Bloomsbury Design
 61b Judd Street Existing
 London WC1H 9QT Roof Plan
 t 020 7383 7647 1:100@A3 October 2016
 f 020 7387 7645
 mail@hughcullum.com NES16-E003(_)