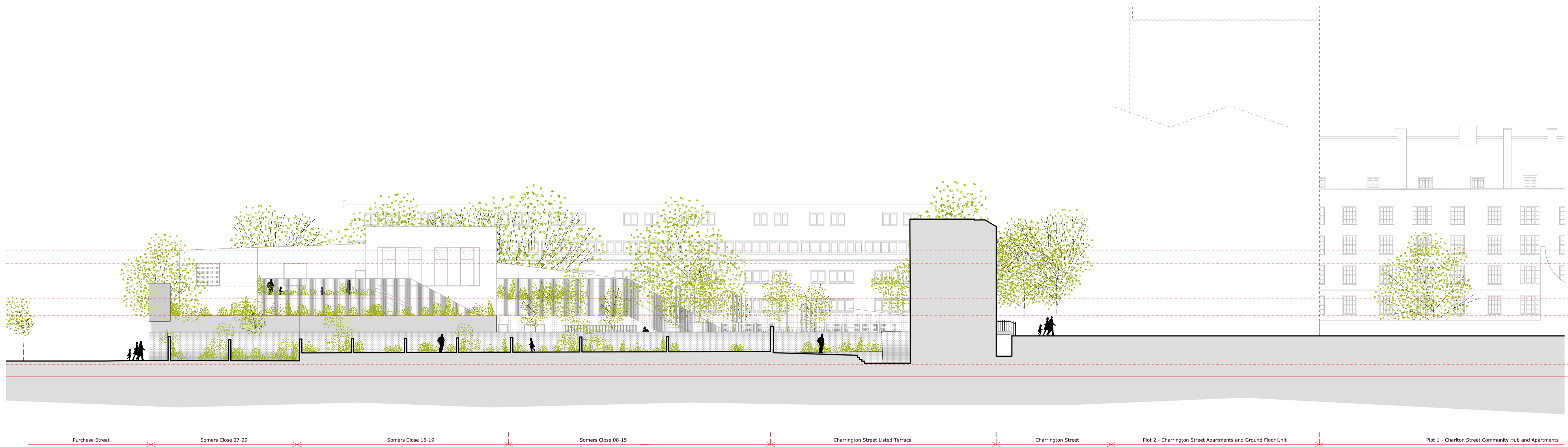
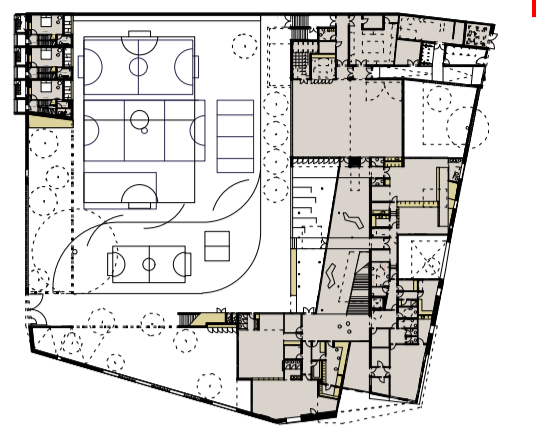
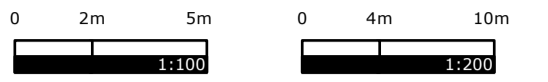
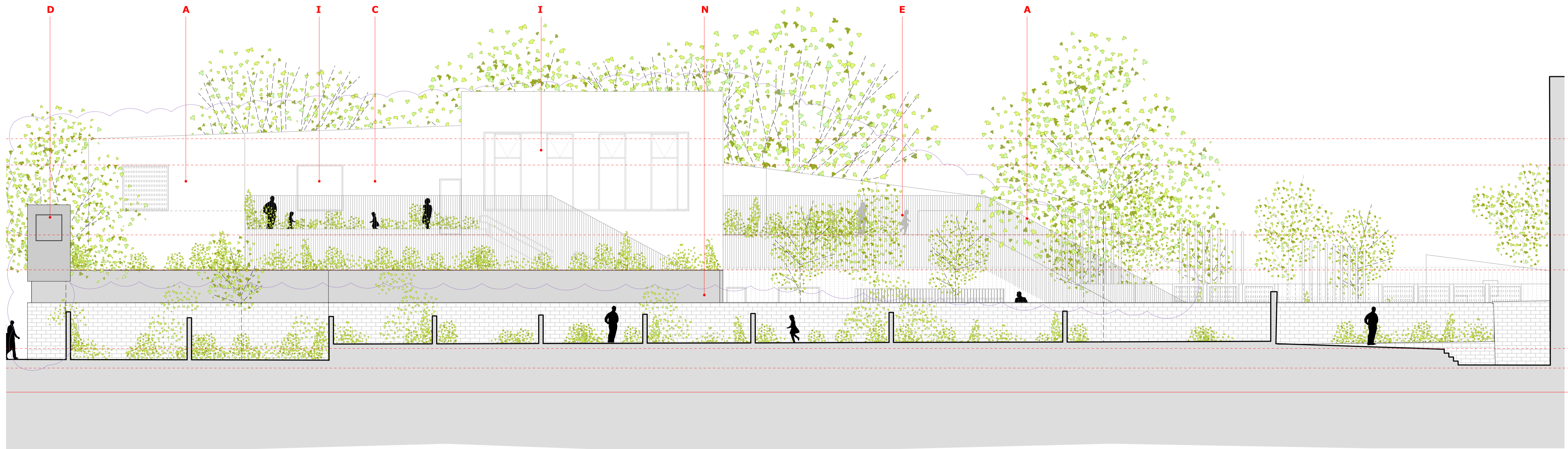


PLANNING ISSUE

Check all dimensions on site. Do not scale off drawings without prior consultation. Any discrepancies to be reported to architects before execution of relevant works. This drawing has been produced for LB Camden for the works at Edith Neville Primary School and for that application alone and is not intended for use by any other person or for any other purpose. Drawings remain copyright of Hayhurst and Co. and may not be reproduced without written consent or licence.



North Elevation in Context
1:200



North Elevation
1:100

- Finishes**
- A White Profiled PPC Aluminium Mesh
 - B White Profiled PPC Aluminium Mesh over plinth
 - C White Profiled PPC Aluminium cladding
 - D Precast Concrete Plinth
 - E White Steel railings/balustrades
 - F White painted timber cladding
 - G Vertical Timber boarding
 - H Vertical board marked precast concrete panels
 - I Aluminium framed glazing
 - J Rooflights
 - K Extensive Green Roof
 - L Photovoltaic Panels
 - M Built-in joinery
 - N White render
 - O Profiled PPC Aluminium Mesh to match plinth colour
 - P White finished timber board cladding
 - Q PPC metal louvre cladding to match render colour

Issue/Revision	Date	Rev
Updated to incorporate elevation amendments	30.03.17	R1

Project:
New Build Primary School
Edith Neville Primary School

Hayhurst and Co.
28 Fourmar Street, London, E1 6DP
T: (020) 7247 7028 F: (020) 7247 7029
E: mail@hayhurstand.co.uk www.hayhurstand.co.uk

Subject: North Elevation - Proposed
Scale: 1:100, 1:200 Date: 27.11.2015
Original Size: A1
Drawing No.: **176 A204 R1**