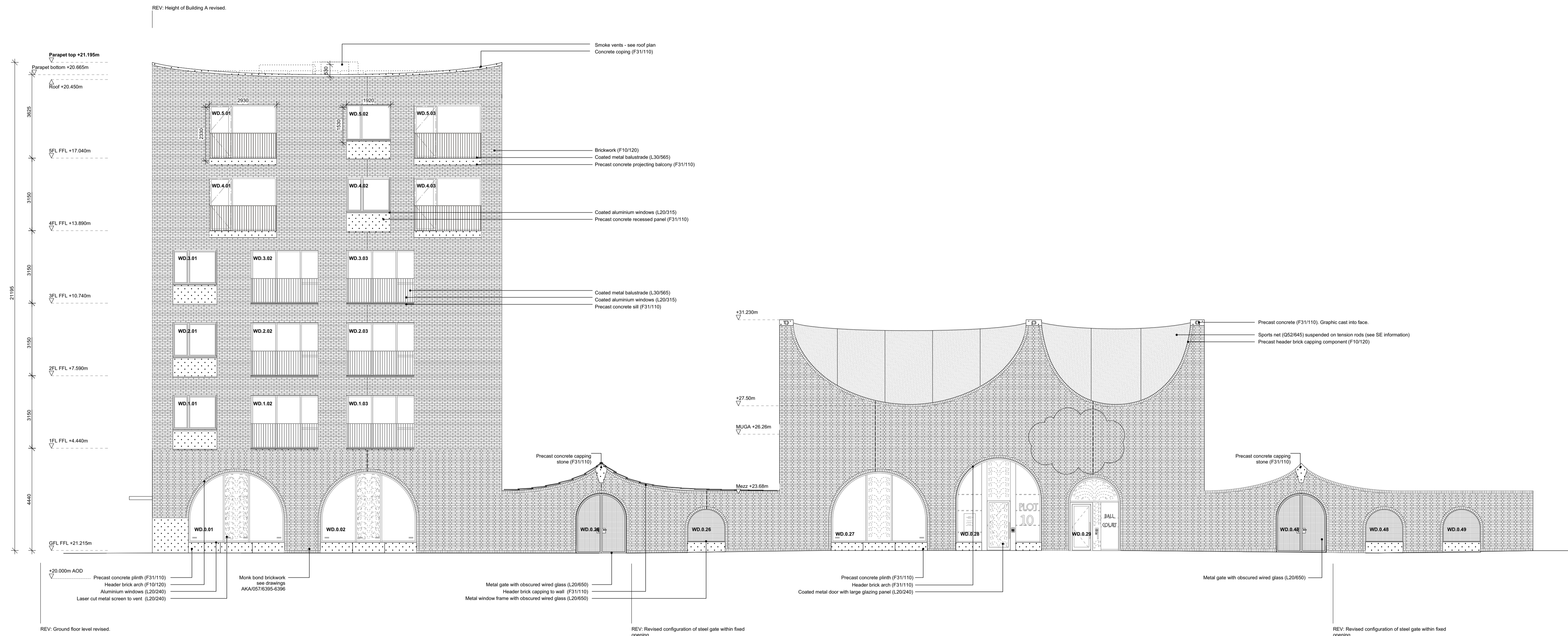


Do not scale from this drawing. Verify all dimensions on site. Drawing should be read in conjunction with information from all other design consultants and contractors. All drawings in digital format are for reference only, paper copies are available on request.

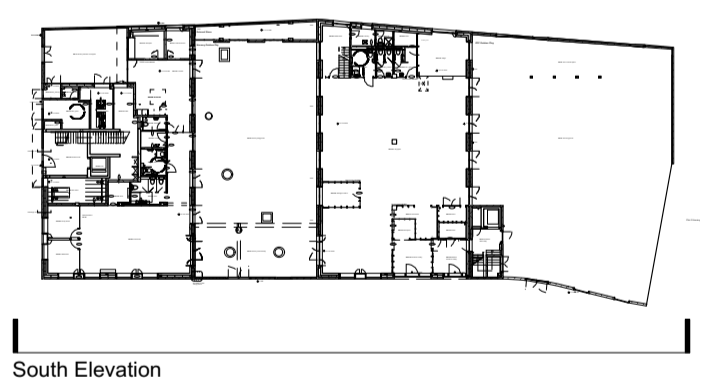
**FOR PLANNING**  
INFORMATION ONLY

**KEY**

- For brick bonds see drawings AKA/057/6395-6396
- RWP Identified rainwaterpipe locations.  
R10/115 where exposed.  
Refer to M&E Specification for RWP in concealed locations.
- WD Identifies Window / Door Type.  
Refer to drawings AKA/057/6200-6220.
- Inset Balcony Refer to AKA/057/6300.
- Projecting Balcony Refer to AKA/057/6301.
- Vents Refer to M&E Information



**Location Key**



South Elevation

C	Planning Revision	BM	15-03-17
B	Planning Revision	PF	16-02-17
Rev	Details	Drwn	Date

**Somers Town Community Facilities**  
Client: London Borough of Camden  
Title: South Elevation  
Scale: 1:100 @ A1  
Date: 30-10-2015

**AKA / 057 / 4150 / C**

**Adam Khan Architects**  
45 Vyner Street  
London E2 9DQ  
020 7403 9897  
www.adamkhan.co.uk