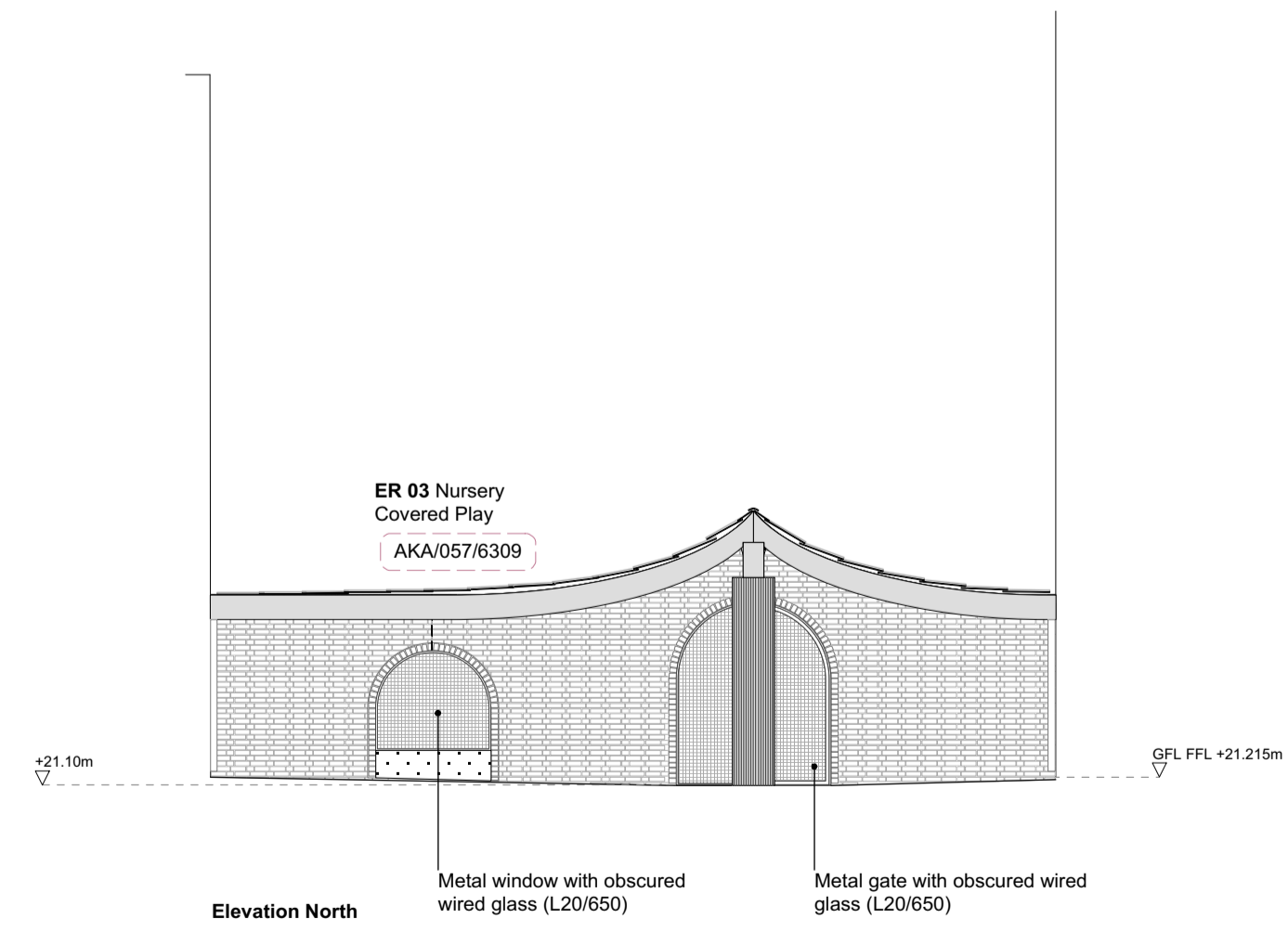
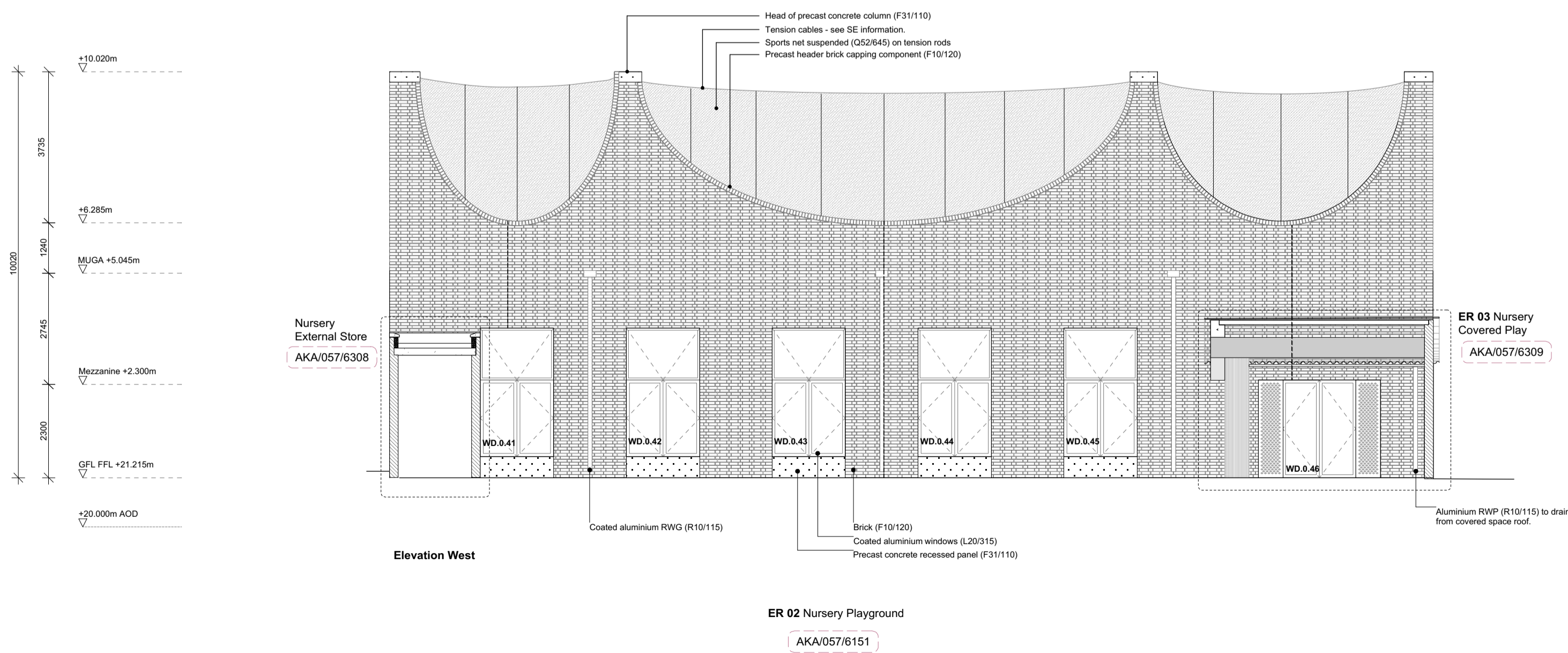
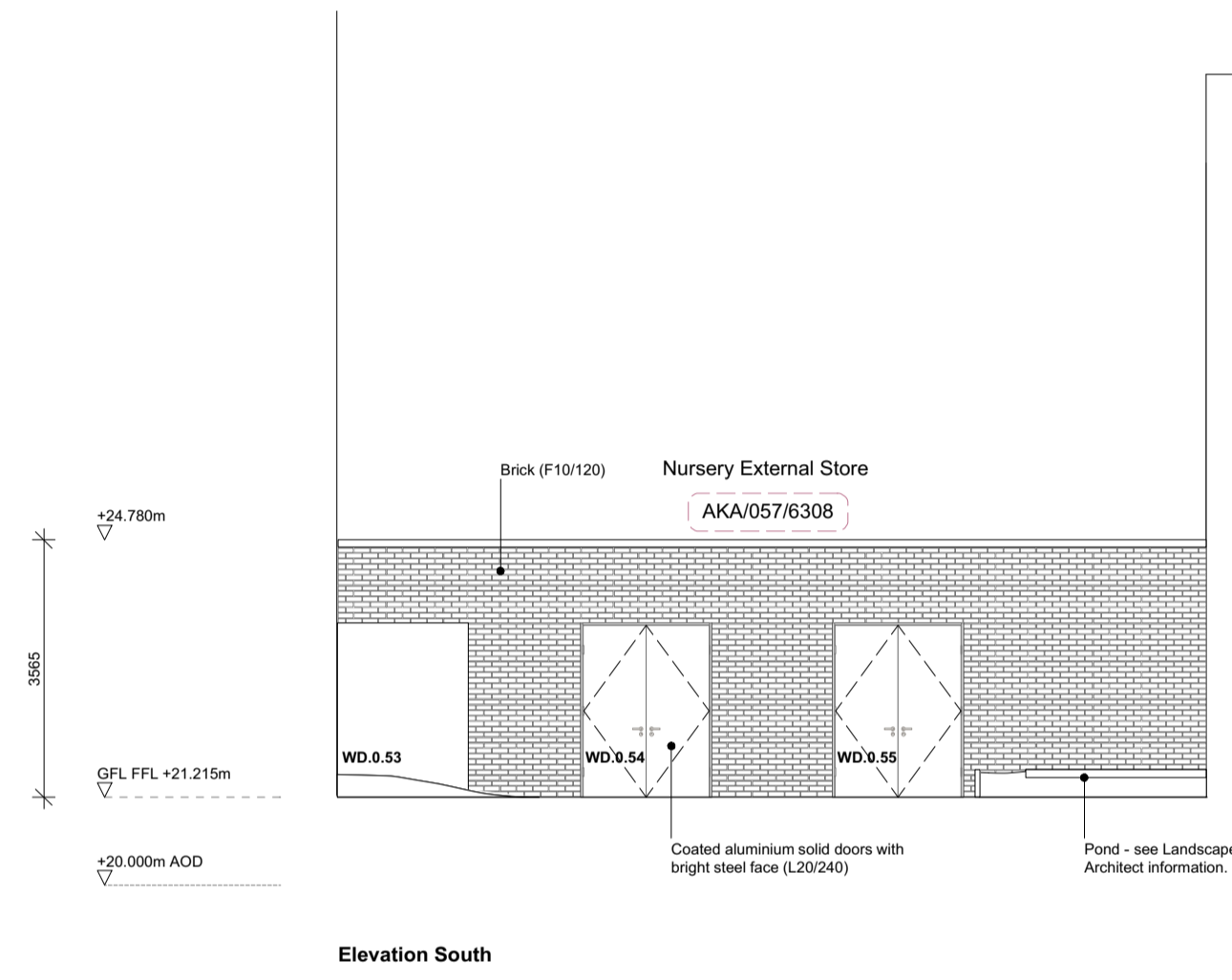
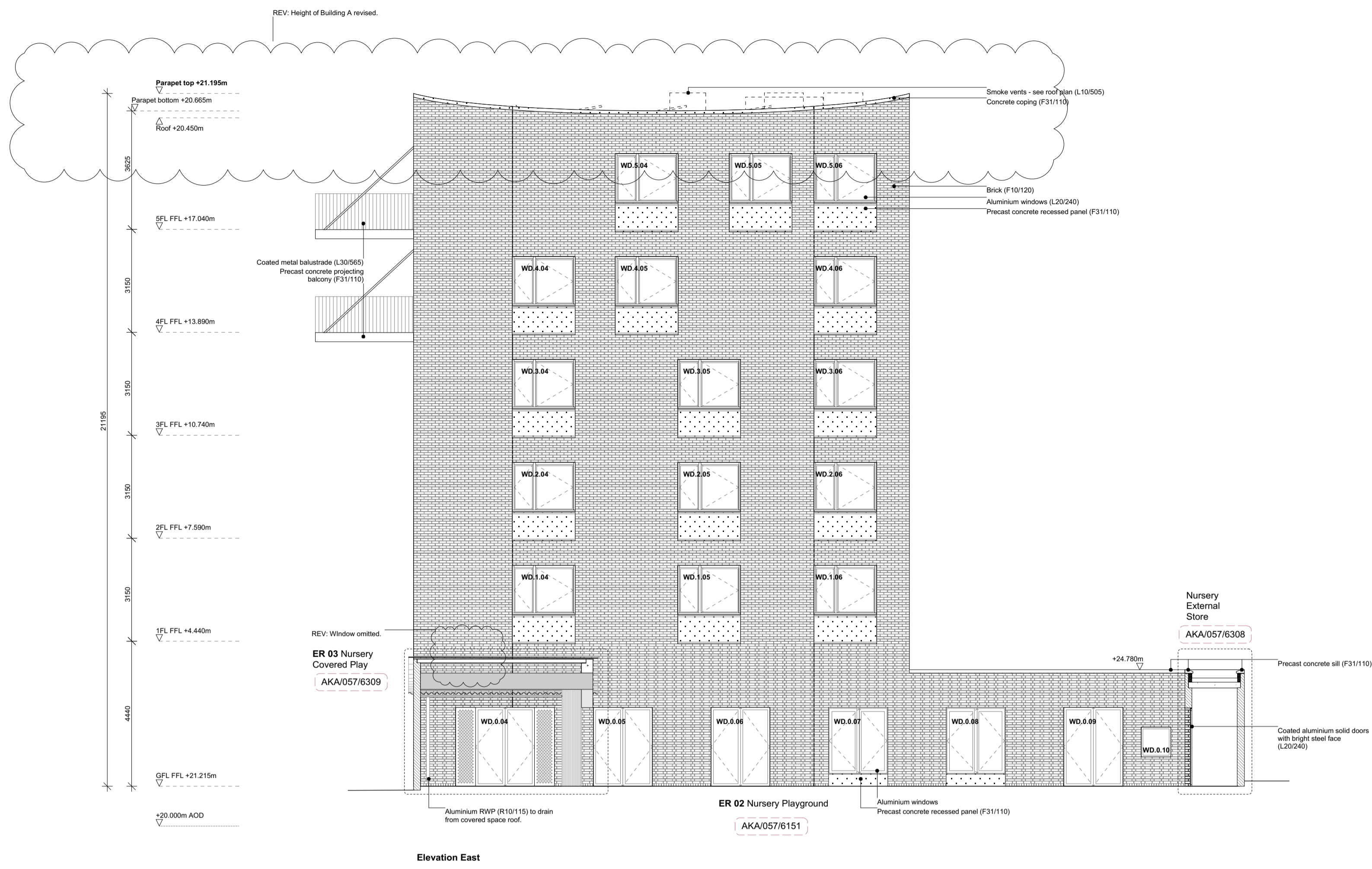


Do not scale from this drawing. Verify all dimensions on site. Drawing should be read in conjunction with information from all other design consultants and contractors. All drawings in digital format are for reference only, paper copies are available on request.

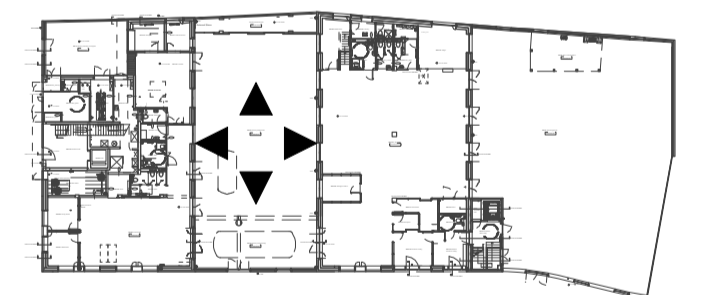
**FOR TENDER**  
INFORMATION ONLY

**KEY**

- For brick bonds see drawings AKA/057/6395-6396
- RWP Identified rainwaterpipe locations.  
R10/115 where exposed.  
Refer to M&E Specification for RWP in concealed locations.
- WD Identifies Window / Door Type.  
Refer to drawings AKA/057/6200-6220.
- Inset Balcony Refer to AKA/057/6300.
- Projecting Balcony Refer to AKA/057/6301.
- Vents Refer to M&E Information



**Location Key**



A Planning Amendment PF 16-02-17  
Rev Details Drwn Date

**Somers Town Community Facilities**

Client: London Borough of Camden  
Title: External Room Elevations\_Nursery Playground

Scale: 1:100 @ A1  
Date: 10-08-2016

**AKA / 057 / 4152 / A**

**Adam Khan Architects**

45 Vyner Street  
London E2 9DQ

020 7403 9897  
www.adamkhan.co.uk