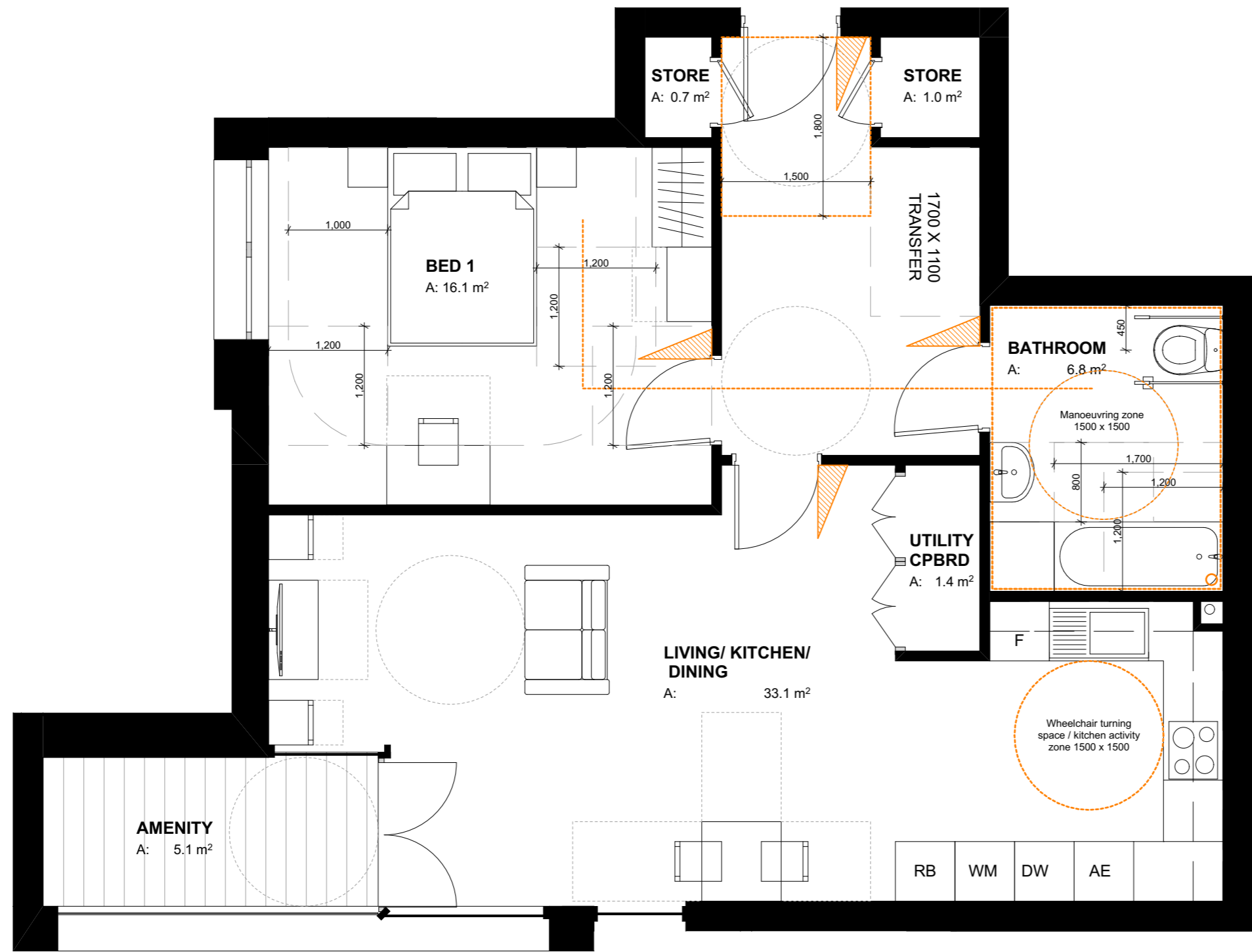


Notes
 - All dimensions to be checked on site
 - Do not scale off this drawing
 - All dimensions are shown in mm unless otherwise stated
 - Refer to drawing issue sheet for purpose of issue
 - If in doubt ask
 - © Llewelyn Davies
 Key plan



Note:
 This unit has been designed in compliance with Approved Document M4(3)(2)(b), Lifetime Homes and London Housing Design Guidance.

UNIT TYPE 01	
UNIT NUMBERS	FLOOR
AL02	L01
AL04	L02
AL06	L03



REV-A	FOR PLANNING	04.04.17	GC
	FOR PLANNING	20.01.17	GC

No.	Revisions	Description	Date	By

Structural Consultant	AECOM	020 7061 7000
Services Consultant	Arup	020 7636 1531
Cost Consultant	Equals Consulting	020 7580 3360
Planning Consultant	TEMPLE	020 7394 3700

Project Title
 Middlesex Hospital Annex
 Client
 University College London
 Hospitals Charity (UCLHC)

Drawing Title
 Lifetime Homes Unit Type 01 -
 Wheelchair Accessible

Project Number	Drawing Number	Revision
LD15 078.00	LFT_01	A

Scale @ A3
 1:50
 Date
 04/04/2017

Architects
LLEWELYN DAVIES
 3rd floor | 3-5 Rathbone Place | London | W1T 1HJ
 T +44(0)20 7907 7900 | E london@ldavies.com
 www.ldavies.com

Notes
 - All dimensions to be checked on site
 - Do not scale off this drawing
 - All dimensions are shown in mm unless otherwise stated
 - Refer to drawing issue sheet for purpose of issue
 - If in doubt ask
 - © Llewelyn Davies
 Key plan



UNIT TYPE 02
UNIT NUMBERS FLOOR
 AL01 L01

Note:
 This unit has been designed in compliance with Approved Document M4(2), Lifetime Homes and London Housing Design Guidance.



REV-A	FOR PLANNING	04.04.17	GC
	FOR PLANNING	20.01.17	GC

No.	Revisions	Description	Date	By
<u>Structural Consultant</u>				
	AECOM		020 7061 7000	
<u>Services Consultant</u>				
	Arup		020 7636 1531	
<u>Cost Consultant</u>				
	Equals Consulting		020 7580 3360	
<u>Planning Consultant</u>				
	TEMPLE		020 7394 3700	

Project Title
 Middlesex Hospital Annex
Client
 University College London
 Hospitals Charity (UCLHC)

Drawing Title
 Lifetime Homes Unit Type 02

Project Number	Drawing Number	Revision
LD15 078.00	LFT_02	A

Scale @ A3
 1:50
 Date
 04/04/2017

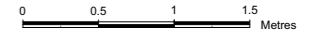
Architects

LLEWELYN DAVIES

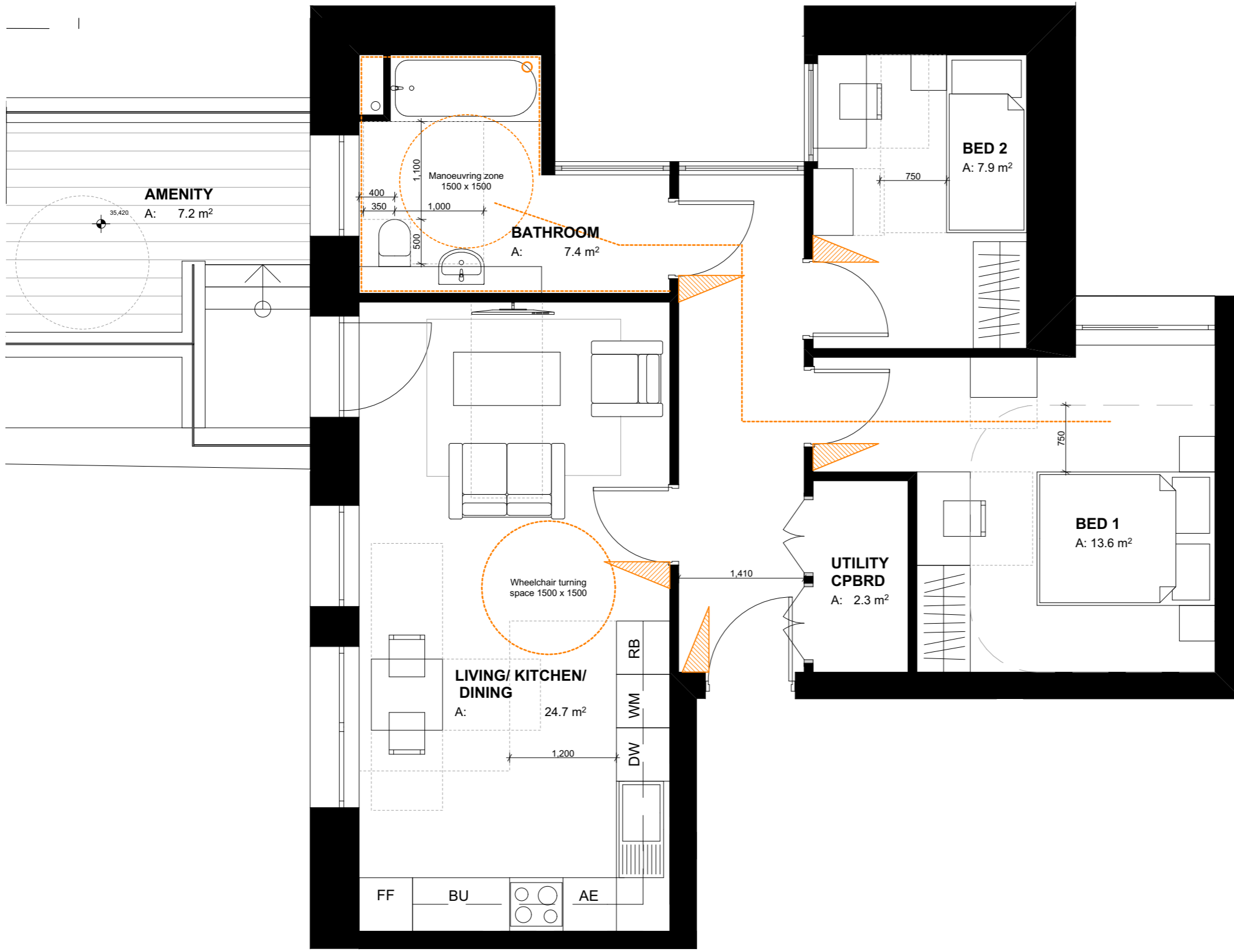
3rd floor | 3-5 Rathbone Place | London | W1T 1HJ
 T +44(0)20 7907 7900 | E london@ldavies.com
 www.ldavies.com

UNIT TYPE 02A
UNIT NUMBERS AL03 **FLOOR** L02

Notes
 - All dimensions to be checked on site
 - Do not scale off this drawing
 - All dimensions are shown in mm unless otherwise stated
 - Refer to drawing issue sheet for purpose of issue
 - If in doubt ask
 - © Llewelyn Davies
 Key plan



Note:
 This unit has been designed in compliance with Approved Document M4(2), Lifetime Homes and London Housing Design Guidance.



REV-A	FOR PLANNING	04.04.17	GC	
	FOR PLANNING	20.01.17	GC	
No.	Revisions	Description	Date	By
<u>Structural Consultant</u>				
	AECOM		020 7061 7000	
<u>Services Consultant</u>				
	Arup		020 7636 1531	
<u>Cost Consultant</u>				
	Equals Consulting		020 7580 3360	
<u>Planning Consultant</u>				
	TEMPLE		020 7394 3700	

Project Title
 Middlesex Hospital Annex
Client
 University College London
 Hospitals Charity (UCLHC)
Drawing Title
 Lifetime Homes Unit Type 02A

Project Number LD15 078.00 **Drawing Number** LFT_02A **Revision** A
Scale @ A3
 1:50
Date
 04/04/2017
Architects

LLEWELYN DAVIES
 3rd floor | 3-5 Rathbone Place | London | W1T 1HJ
 T +44(0)20 7907 7900 | E london@ldavies.com
 www.ldavies.com

Notes
 - All dimensions to be checked on site
 - Do not scale off this drawing
 - All dimensions are shown in mm unless otherwise stated
 - Refer to drawing issue sheet for purpose of issue
 - If in doubt ask
 - © Llewelyn Davies
 Key plan



UNIT TYPE 02B
UNIT NUMBERS FLOOR
 AL05 L03

Note:
 This unit has been designed in compliance with Approved Document M4(2), Lifetime Homes and London Housing Design Guidance.



REV-A	FOR PLANNING	04.04.17	GC	
	FOR PLANNING	20.01.17	GC	
No.	Revisions	Description	Date	By
<u>Structural Consultant</u>				
	AECOM		020 7061 7000	
<u>Services Consultant</u>				
	Arup		020 7636 1531	
<u>Cost Consultant</u>				
	Equals Consulting		020 7580 3360	
<u>Planning Consultant</u>				
	TEMPLE		020 7394 3700	

Project Title
 Middlesex Hospital Annex
Client
 University College London
 Hospitals Charity (UCLHC)
Drawing Title
 Lifetime Homes Unit Type 02B

Project Number	Drawing Number	Revision
LD15 078.00	LFT_02B	A

Scale @ A3
 1:50
 Date
 04/04/2017
 Architects

Notes

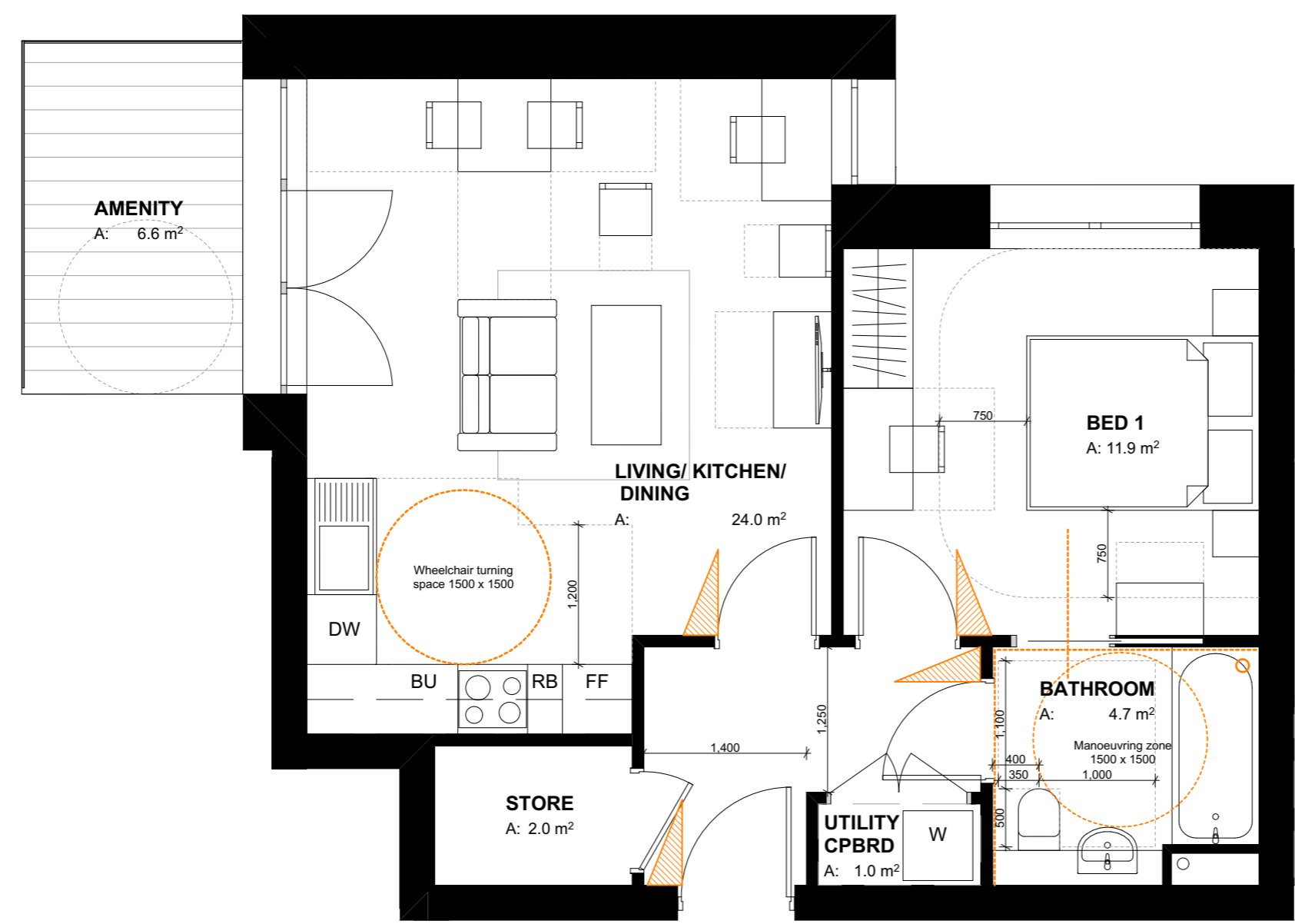
- All dimensions to be checked on site
- Do not scale off this drawing
- All dimensions are shown in mm unless otherwise stated
- Refer to drawing issue sheet for purpose of issue
- If in doubt ask
- © Llewelyn Davies

Key plan



Note:
This unit has been designed in compliance with Approved Document M4(2), Lifetime Homes and London Housing Design Guidance.

UNIT TYPE 03	
UNIT NUMBERS	FLOOR
AL07	L03
AL16	L04
AL27	L05
AI03	L06
AI04	L07



REV-A	FOR PLANNING	04.04.17	GC
	FOR PLANNING	20.01.17	GC

No.	Revisions	Description	Date	By

Structural Consultant
AECOM 020 7061 7000

Services Consultant
Arup 020 7636 1531

Cost Consultant
Equals Consulting 020 7580 3360

Planning Consultant
TEMPLE 020 7394 3700

Project Title
Middlesex Hospital Annex

Client
**University College London
Hospitals Charity (UCLHC)**

Drawing Title
Lifetime Homes Unit Type 03

Project Number	Drawing Number	Revision
LD15 078.00	LFT_03	A

Scale @ A3
1:50

Date
04/04/2017

Architects

Notes
 - All dimensions to be checked on site
 - Do not scale off this drawing
 - All dimensions are shown in mm unless otherwise stated
 - Refer to drawing issue sheet for purpose of issue
 - If in doubt ask
 - © Llewelyn Davies
 Key plan



UNIT TYPE 04	
UNIT NUMBERS	FLOOR
AL09	L03
AL18	L04
AL29	L05

Note:
 This unit has been designed in compliance with Approved Document M4(2), Lifetime Homes and London Housing Design Guidance.



REV-A	FOR PLANNING	04.04.17	GC
	FOR PLANNING	20.01.17	GC

No.	Revisions	Description	Date	By
<u>Structural Consultant</u>				
	AECOM		020 7061 7000	
<u>Services Consultant</u>				
	Arup		020 7636 1531	
<u>Cost Consultant</u>				
	Equals Consulting		020 7580 3360	
<u>Planning Consultant</u>				
	TEMPLE		020 7394 3700	

Project Title
 Middlesex Hospital Annex
Client
 University College London
 Hospitals Charity (UCLHC)
Drawing Title
 Lifetime Homes Unit Type 04

Project Number	Drawing Number	Revision
LD15 078.00	LFT_04	A

Scale @ A3
 1:50
 Date

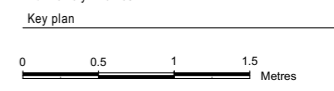
04/04/2017
 Architects

LLEWELYN DAVIES

3rd floor | 3-5 Rathbone Place | London | W1T 1HJ
 T +44(0)20 7907 7900 | E london@ldavies.com
 www.ldavies.com

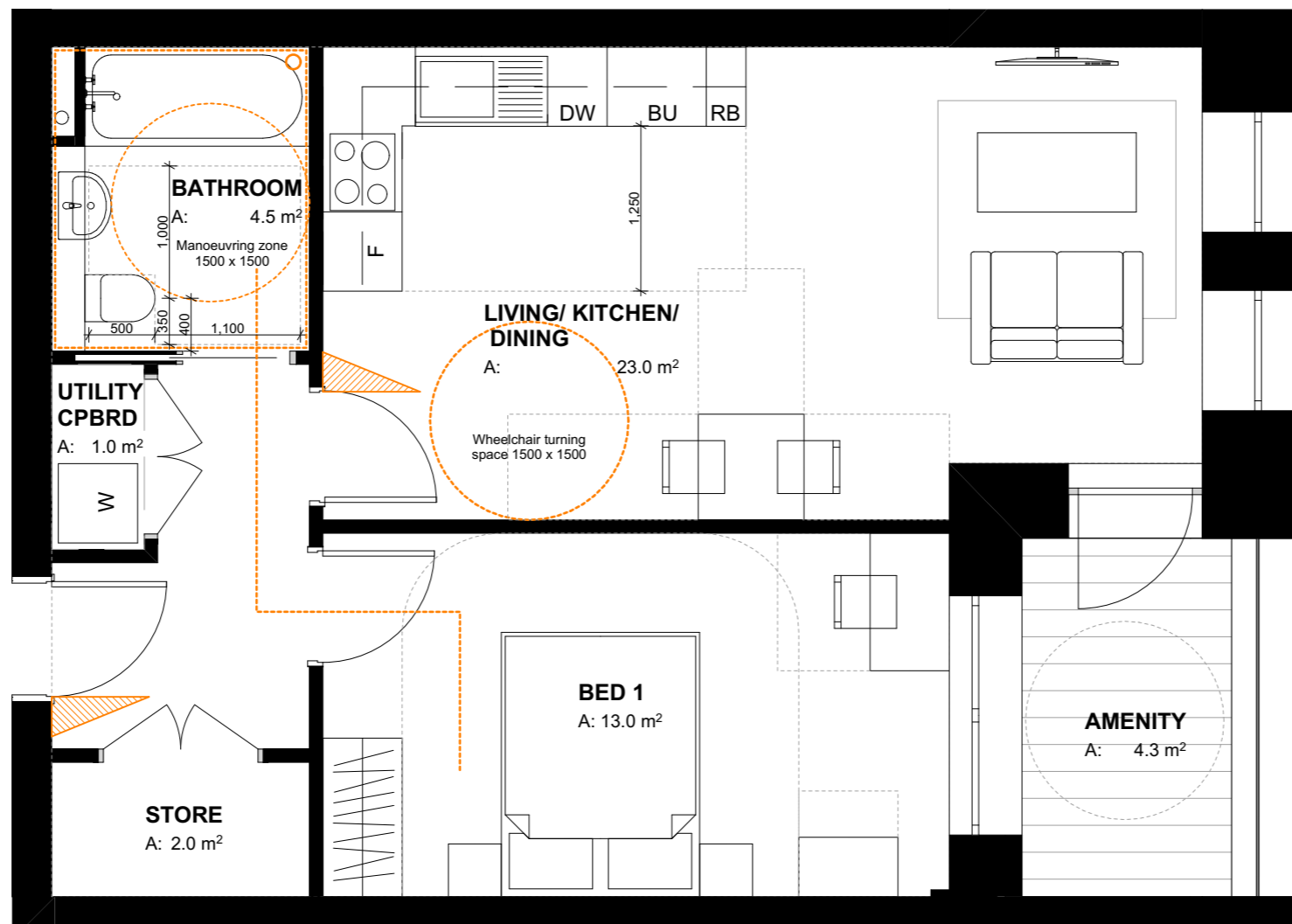
Notes

- All dimensions to be checked on site
- Do not scale off this drawing
- All dimensions are shown in mm unless otherwise stated
- Refer to drawing issue sheet for purpose of issue
- If in doubt ask
- © Llewelyn Davies



UNIT TYPE 05	
UNIT NUMBERS	FLOOR
AL10	L03
AL19	L04

Note:
This unit has been designed in compliance with Approved Document M4(2), Lifetime Homes and London Housing Design Guidance.



REV-A	FOR PLANNING	04.04.17	GC
	FOR PLANNING	20.01.17	GC

No.	Revisions	Description	Date	By
<u>Structural Consultant</u>				
	AECOM		020 7061 7000	
<u>Services Consultant</u>				
	Arup		020 7636 1531	
<u>Cost Consultant</u>				
	Equals Consulting		020 7580 3360	
<u>Planning Consultant</u>				
	TEMPLE		020 7394 3700	

Project Title
Middlesex Hospital Annex

Client
University College London
Hospitals Charity (UCLHC)

Drawing Title
Lifetime Homes Unit Type 05

Project Number	Drawing Number	Revision
LD15 078.00	LFT_05	A

Scale @ A3
1:50

Date
04/04/2017

Architects

LLEWELYN DAVIES

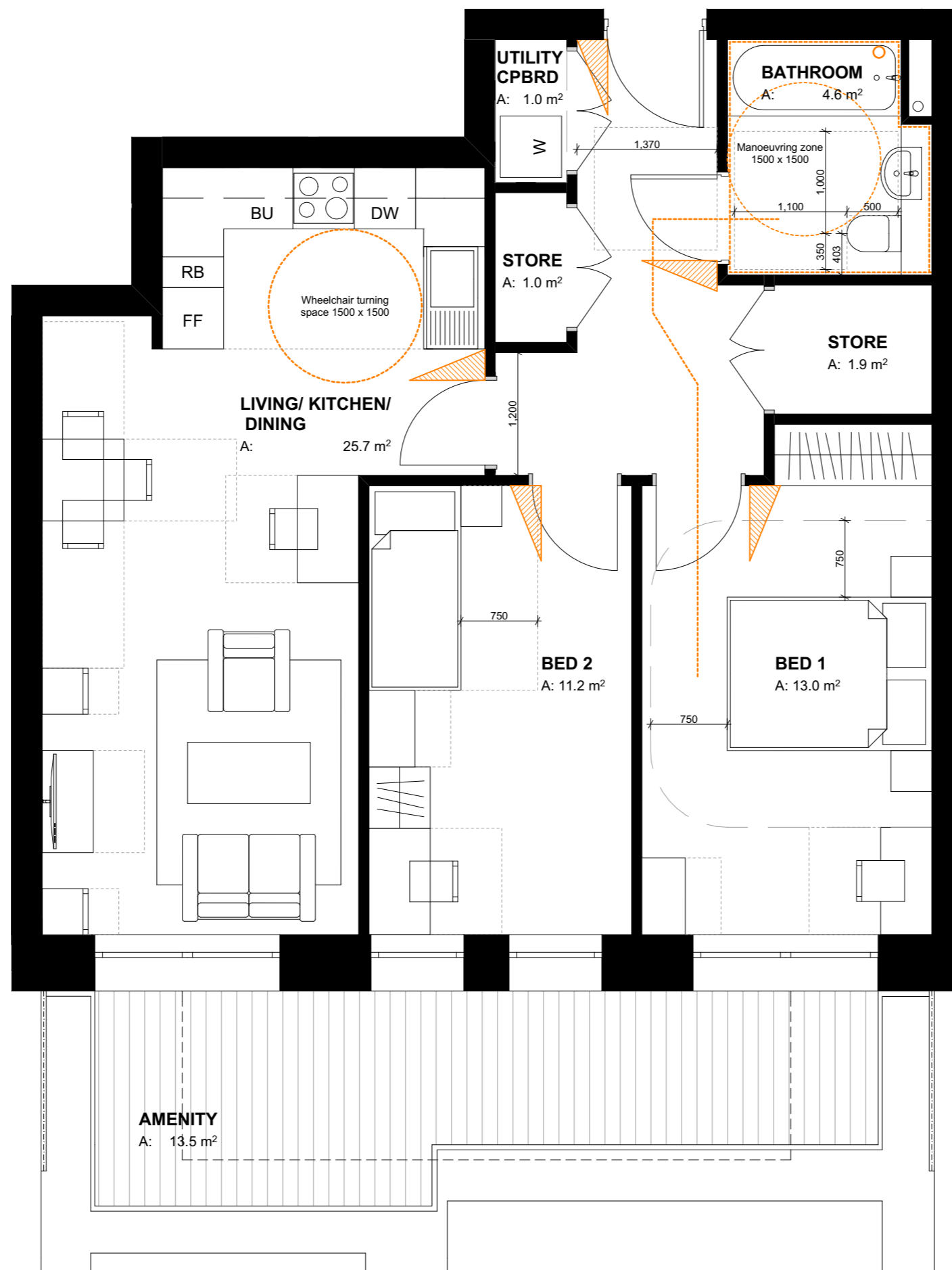
3rd floor | 3-5 Rathbone Place | London | W1T 1HJ
T +44(0)20 7907 7900 | E london@ldavies.com
www.ldavies.com

Notes
 - All dimensions to be checked on site
 - Do not scale off this drawing
 - All dimensions are shown in mm unless otherwise stated
 - Refer to drawing issue sheet for purpose of issue
 - If in doubt ask
 - © Llewelyn Davies
 Key plan



UNIT TYPE 06
UNIT NUMBERS FLOOR
 AL08 L03

Note:
 This unit has been designed in compliance with Approved Document M4(2), Lifetime Homes and London Housing Design Guidance.



REV-A	FOR PLANNING	04.04.17	GC
	FOR PLANNING	20.01.17	GC

No.	Revisions	Description	Date	By
-----	-----------	-------------	------	----

<u>Structural Consultant</u>			
AECOM		020 7061 7000	

<u>Services Consultant</u>			
Arup		020 7636 1531	

<u>Cost Consultant</u>			
Equals Consulting		020 7580 3360	

<u>Planning Consultant</u>			
TEMPLE		020 7394 3700	

Project Title

Middlesex Hospital Annex

Client

University College London

Hospitals Charity (UCLHC)

Drawing Title

Lifetime Homes Unit Type 06

Project Number

LD15 078.00

Drawing Number

LFT_06

Revision

A

Scale @ A3

1:50

Date

04/04/2017

Architects

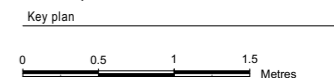
LLEWELYN DAVIES

3rd floor | 3-5 Rathbone Place | London | W1T 1HJ

T +44(0)20 7907 7900 | E london@ldavies.com

www.ldavies.com

Notes
 - All dimensions to be checked on site
 - Do not scale off this drawing
 - All dimensions are shown in mm unless otherwise stated
 - Refer to drawing issue sheet for purpose of issue
 - If in doubt ask
 - © Llewelyn Davies

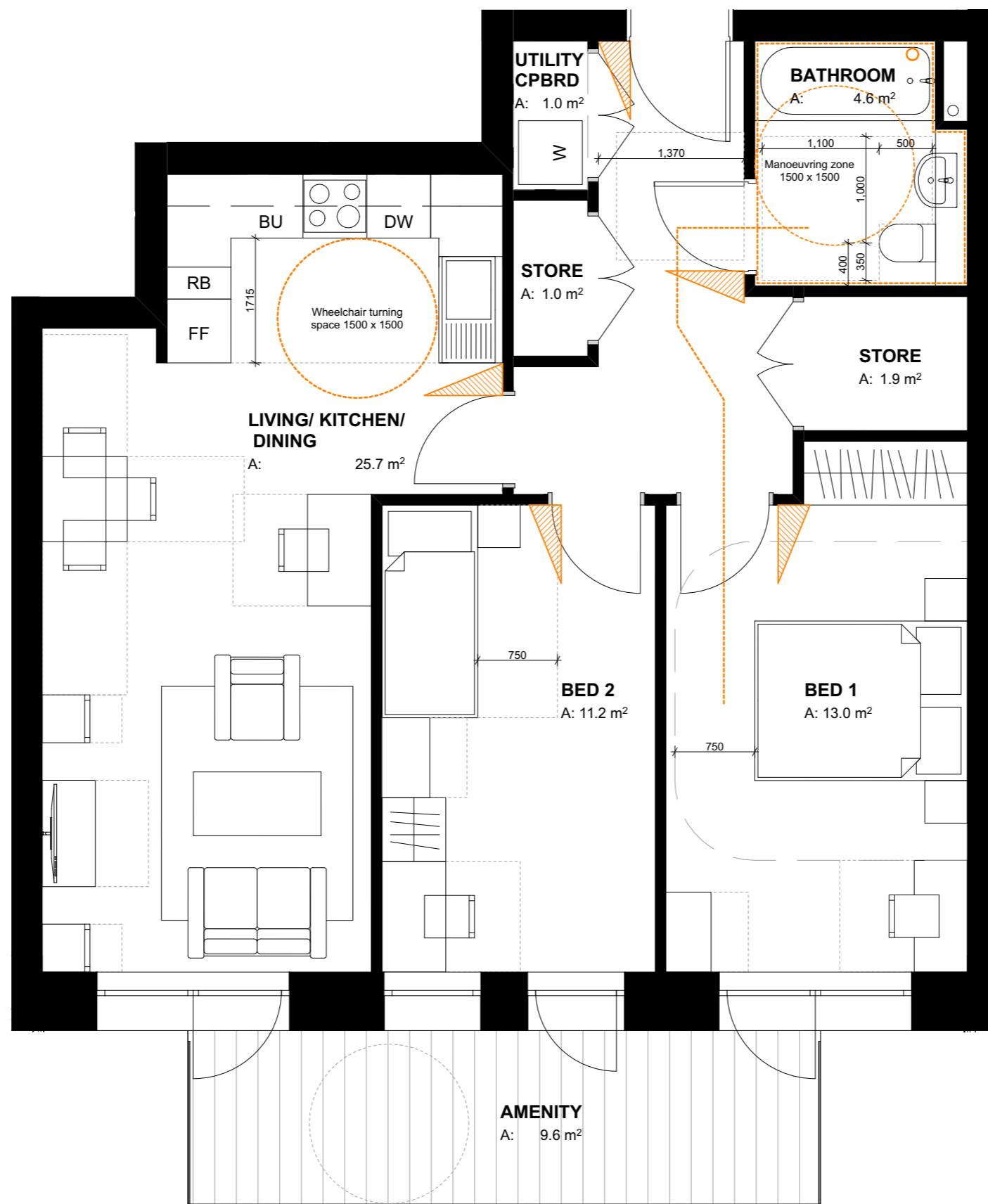


UNIT TYPE 06

UNIT NUMBERS FLOOR

AL17 L04
 AL28 L05

Note:
 This unit has been designed in compliance with Approved Document M4(2), Lifetime Homes and London Housing Design Guidance.



REV-A	FOR PLANNING	04.04.17	GC
	FOR PLANNING	20.01.17	GC

No.	Revisions	Description	Date	By
<i>Structural Consultant</i>				
	AECOM		020 7061 7000	
<i>Services Consultant</i>				
	Arup		020 7636 1531	
<i>Cost Consultant</i>				
	Equals Consulting		020 7580 3360	
<i>Planning Consultant</i>				
	TEMPLE		020 7394 3700	

Project Title
 Middlesex Hospital Annex

Client
 University College London
 Hospitals Charity (UCLHC)

Drawing Title
 Lifetime Homes Unit Type 06A

Project Number	Drawing Number	Revision
LD15 078.00	LFT_06A	A

Scale @ A3
 1:50
 Date
 04/04/2017

Architects

LLEWELYN DAVIES

3rd floor | 3-5 Rathbone Place | London | W1T 1HJ
 T +44(0)20 7907 7900 | E london@ldavies.com
 www.ldavies.com



REV-A	FOR PLANNING	04.04.17	GC	
	FOR PLANNING	20.01.17	GC	
No.	Revisions	Description	Date	By
Structural Consultant				
	AECOM		020 7061 7000	
Services Consultant				
	Arup		020 7636 1531	
Cost Consultant				
	Equals Consulting		020 7580 3360	
Planning Consultant				
	TEMPLE		020 7394 3700	
Project Title				
Middlesex Hospital Annex				
Client				
University College London				
Hospitals Charity (UCLHC)				
Drawing Title				
Lifetime Homes Unit Type 07				
Project Number	Drawing Number	Revision		
LD15 078.00	LFT_07	A		
Scale @ A3				
1:50				
Date				
04/04/2017				
Architects				

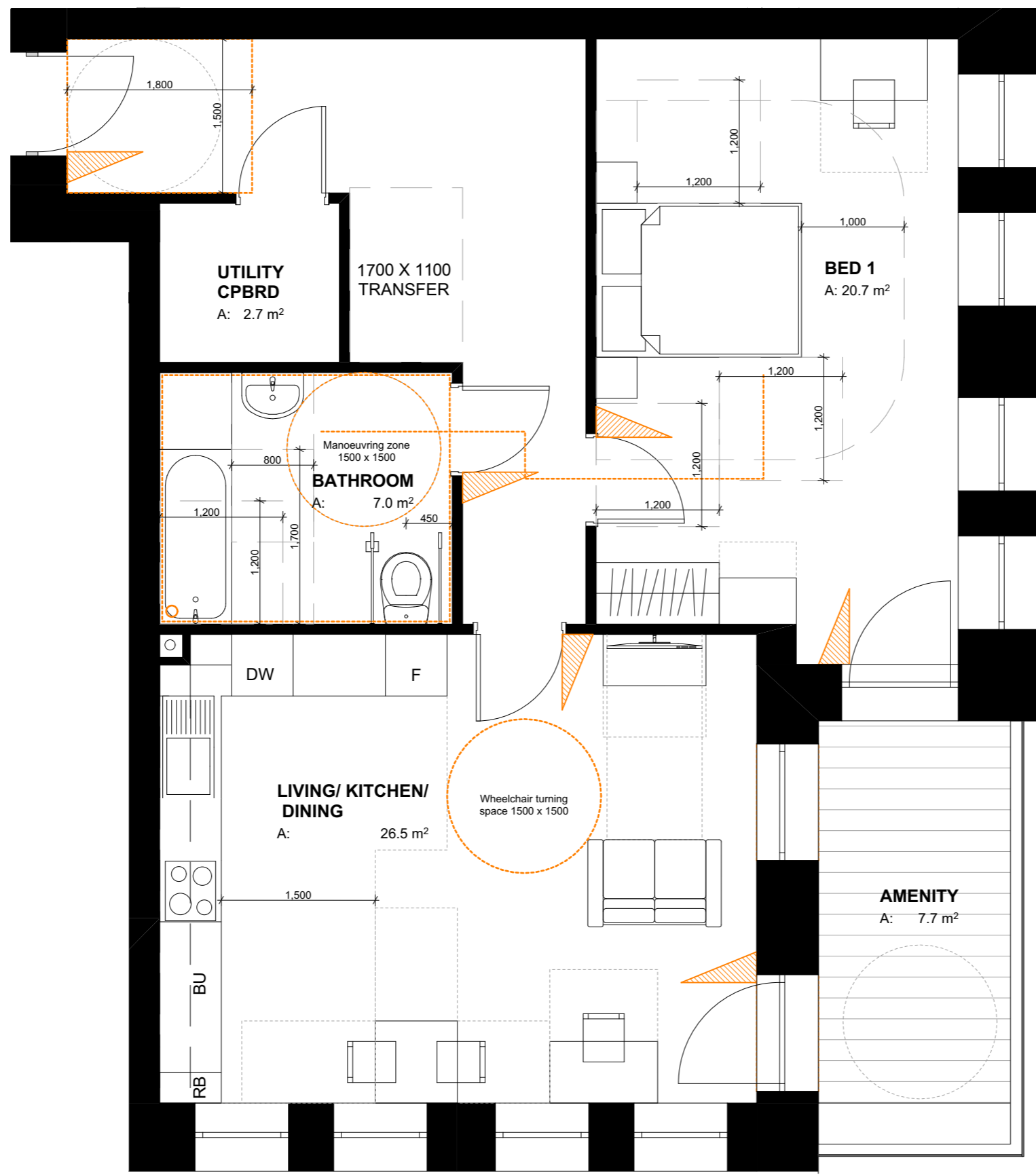
LLEWELYN DAVIES

Notes
 - All dimensions to be checked on site
 - Do not scale off this drawing
 - All dimensions are shown in mm unless otherwise stated
 - Refer to drawing issue sheet for purpose of issue
 - If in doubt ask
 - © Llewelyn Davies
 Key plan



UNIT TYPE 08
UNIT NUMBERS FLOOR
 AL12 L03

Note:
 This unit has been designed in compliance with Approved Document M4(3)(2)(b), Lifetime Homes and London Housing Design Guidance.



REV-A	FOR PLANNING	04.04.17	GC
	FOR PLANNING	20.01.17	GC

No.	Revisions	Description	Date	By
<u>Structural Consultant</u>				
	AECOM		020 7061 7000	
<u>Services Consultant</u>				
	Arup		020 7636 1531	
<u>Cost Consultant</u>				
	Equals Consulting		020 7580 3360	
<u>Planning Consultant</u>				
	TEMPLE		020 7394 3700	

Project Title
 Middlesex Hospital Annex
Client
 University College London
 Hospitals Charity (UCLHC)

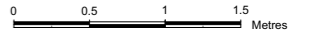
Drawing Title
 Lifetime Homes Unit Type 08 -
 Wheelchair Accessible

Project Number	Drawing Number	Revision
LD15 078.00	LFT_08	A

Scale @ A3
 1:50
 Date

04/04/2017
 Architects

Notes
 - All dimensions to be checked on site
 - Do not scale off this drawing
 - All dimensions are shown in mm unless otherwise stated
 - Refer to drawing issue sheet for purpose of issue
 - If in doubt ask
 - © Llewelyn Davies
 Key plan



UNIT TYPE 09
UNIT NUMBERS FLOOR
 AL13 L03

Note:
 This unit has been designed in compliance with Approved Document M4(2), Lifetime Homes and London Housing Design Guidance.



REV-A	FOR PLANNING	04.04.17	GC
	FOR PLANNING	20.01.17	GC

No.	Revisions	Description	Date	By
<u>Structural Consultant</u>				
	AECOM		020 7061 7000	
<u>Services Consultant</u>				
	Arup		020 7636 1531	
<u>Cost Consultant</u>				
	Equals Consulting		020 7580 3360	
<u>Planning Consultant</u>				
	TEMPLE		020 7394 3700	

Project Title
 Middlesex Hospital Annex
Client
 University College London
 Hospitals Charity (UCLHC)

Drawing Title
 Lifetime Homes Unit Type 09

Project Number	Drawing Number	Revision
LD15 078.00	LFT_09	A

Scale @ A3
 1:50
 Date

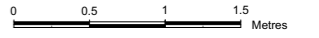
04/04/2017

Architects

LLEWELYN DAVIES

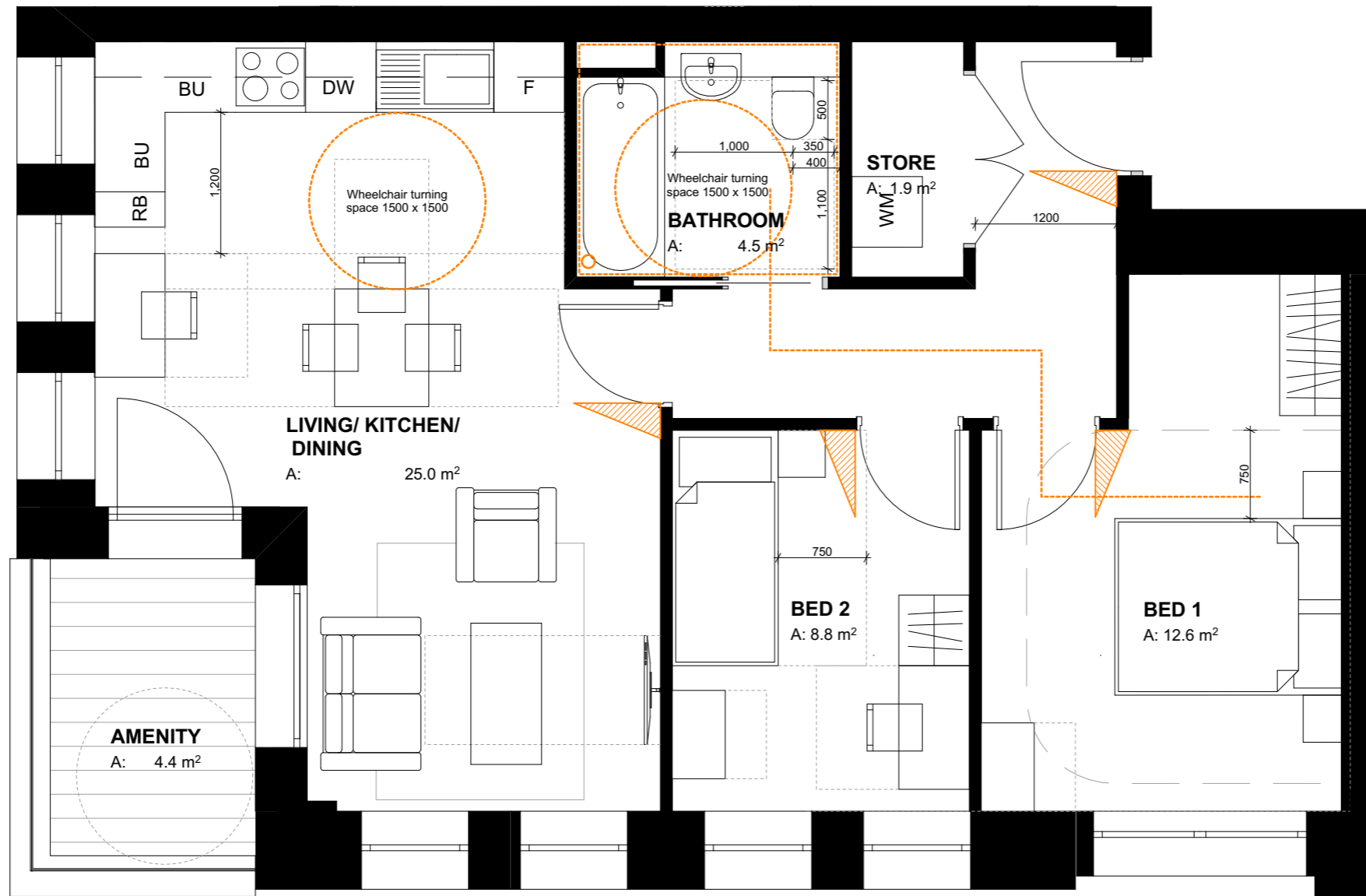
3rd floor | 3-5 Rathbone Place | London | W1T 1HJ
 T +44(0)20 7907 7900 | E london@ldavies.com
 www.ldavies.com

Notes
 - All dimensions to be checked on site
 - Do not scale off this drawing
 - All dimensions are shown in mm unless otherwise stated
 - Refer to drawing issue sheet for purpose of issue
 - If in doubt ask
 - © Llewelyn Davies
 Key plan



UNIT TYPE 10
UNIT NUMBERS FLOOR
 AL14 L03

Note:
 This unit has been designed in compliance with Approved Document M4(2), Lifetime Homes and London Housing Design Guidance.



REV-A	FOR PLANNING	04.04.17	GC
	FOR PLANNING	20.01.17	GC

No.	Revisions	Description	Date	By
	Structural Consultant			
	AECOM		020 7061 7000	
	Services Consultant			
	Arup		020 7636 1531	
	Cost Consultant			
	Equals Consulting		020 7580 3360	
	Planning Consultant			
	TEMPLE		020 7394 3700	

Project Title
 Middlesex Hospital Annex
 Client
 University College London
 Hospitals Charity (UCLHC)

Drawing Title
 Lifetime Homes Unit Type 10

Project Number	Drawing Number	Revision
LD15 078.00	LFT_10	A

Scale @ A3
 1:50
 Date

04/04/2017
 Architects

LLEWELYN DAVIES

3rd floor | 3-5 Rathbone Place | London | W1T 1HJ
 T +44(0)20 7907 7900 | E london@ldavies.com
 www.ldavies.com

Notes

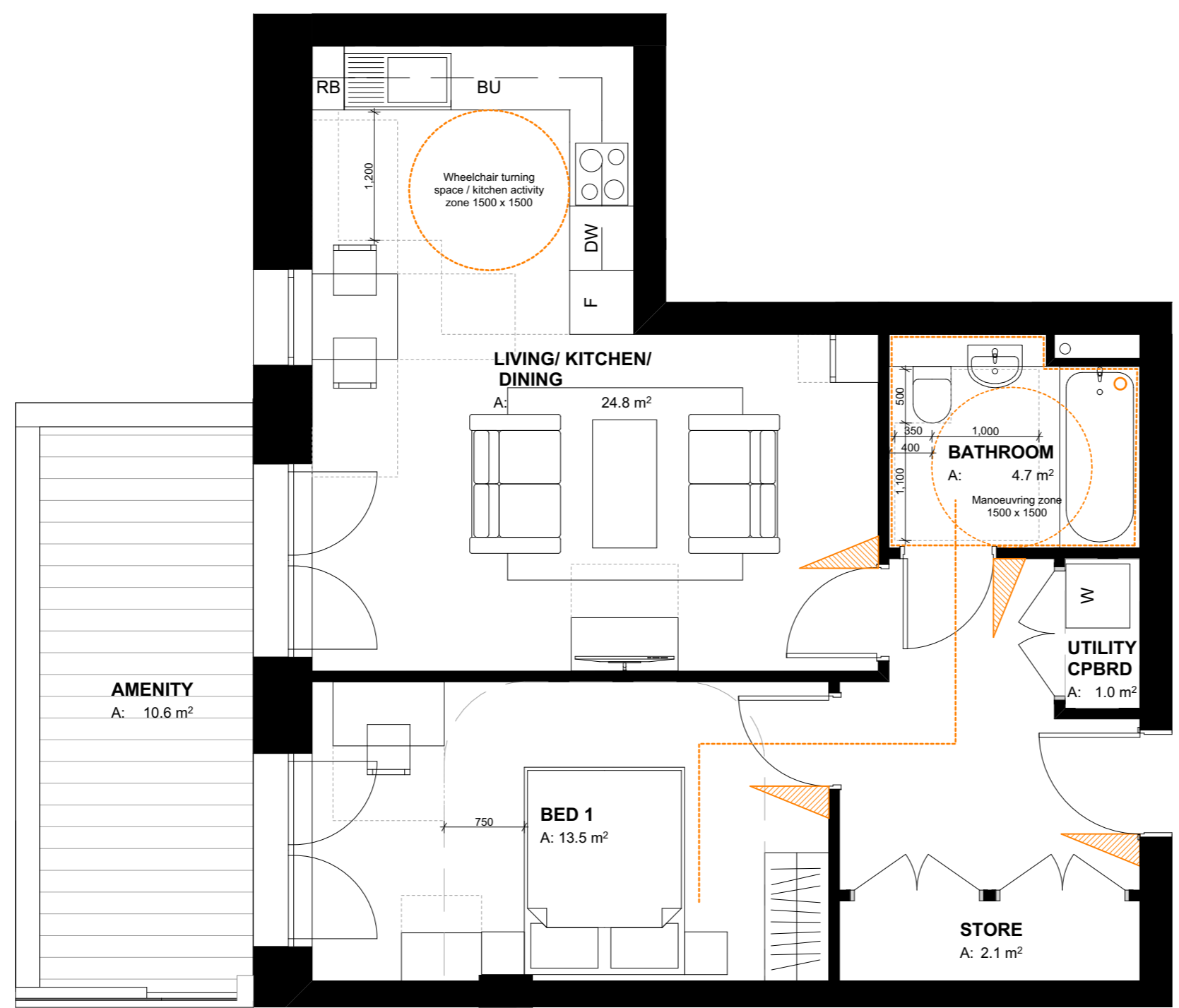
- All dimensions to be checked on site
- Do not scale off this drawing
- All dimensions are shown in mm unless otherwise stated
- Refer to drawing issue sheet for purpose of issue
- If in doubt ask
- © Llewelyn Davies

Key plan



UNIT TYPE 11
UNIT NUMBERS AL25
FLOOR L04

Note:
 This unit has been designed in compliance with Approved Document M4(2), Lifetime Homes and London Housing Design Guidance.

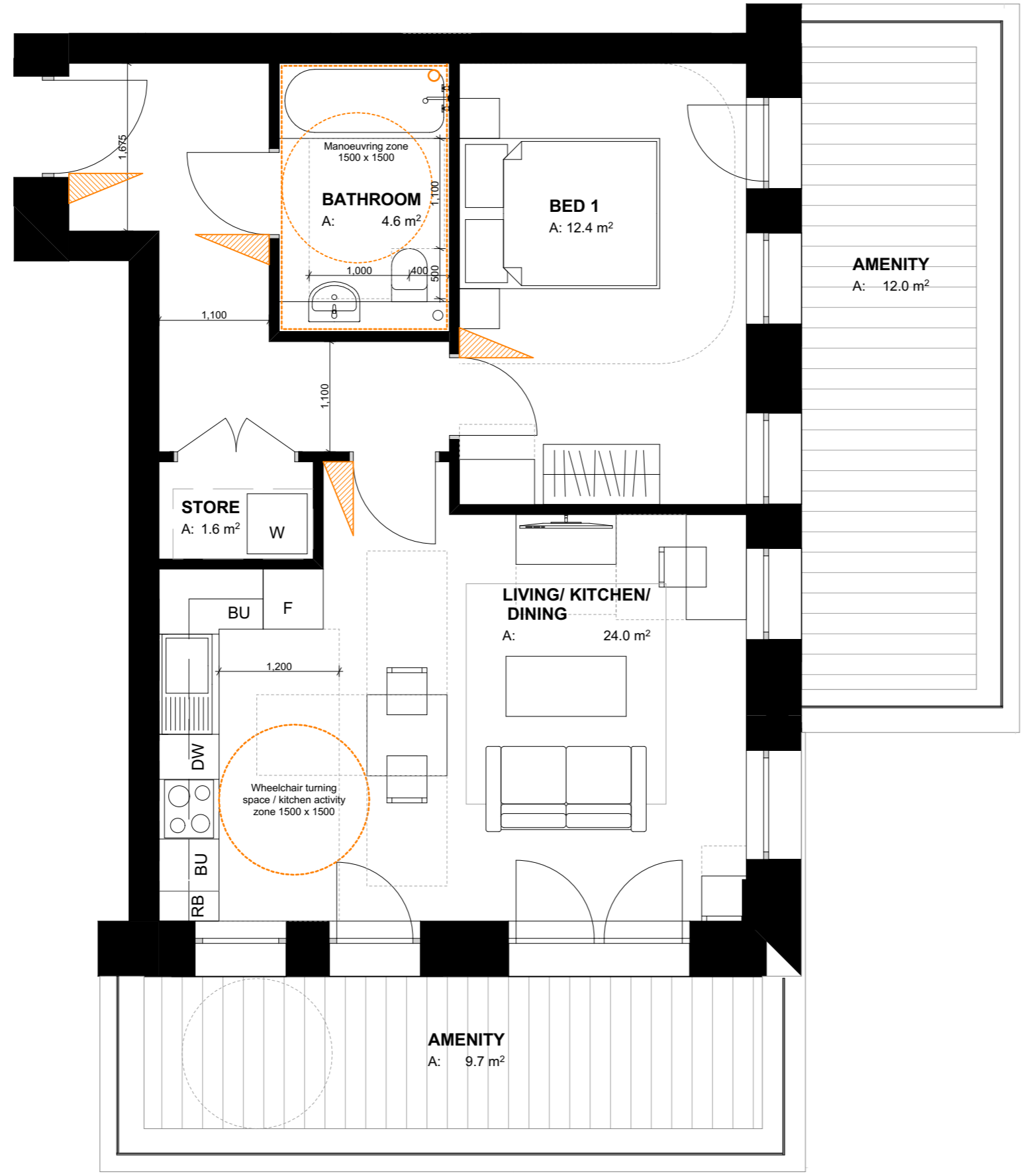


REV-A	FOR PLANNING	04.04.17	GC	
	FOR PLANNING	20.01.17	GC	
No.	Revisions	Description	Date	By
<u>Structural Consultant</u>				
	AECOM		020 7061 7000	
<u>Services Consultant</u>				
	Arup		020 7636 1531	
<u>Cost Consultant</u>				
	Equals Consulting		020 7580 3360	
<u>Planning Consultant</u>				
	TEMPLE		020 7394 3700	
<u>Project Title</u>				
Middlesex Hospital Annex				
<u>Client</u>				
University College London Hospitals Charity (UCLHC)				
<u>Drawing Title</u>				
Lifetime Homes Unit Type 11				

Project Number	Drawing Number	Revision
LD15 078.00	LFT_11	A

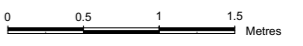
Scale @ A3
 1:50
 Date
 04/04/2017
 Architects

LLEWELYN DAVIES
 3rd floor | 3-5 Rathbone Place | London | W1T 1HJ
 T +44(0)20 7907 7900 | E london@ldavies.com
 www.ldavies.com



UNIT TYPE 12
UNIT NUMBERS AL21
FLOOR L04

Notes
 - All dimensions to be checked on site
 - Do not scale off this drawing
 - All dimensions are shown in mm unless otherwise stated
 - Refer to drawing issue sheet for purpose of issue
 - If in doubt ask
 - © Llewelyn Davies
 Key plan



Note:
 This unit has been designed in compliance with Approved Document M4(2), Lifetime Homes and London Housing Design Guidance.

REV-A	FOR PLANNING	04.04.17	GC
	FOR PLANNING	20.01.17	GC

No.	Revisions	Description	Date	By
Structural Consultant				
	AECOM		020 7061 7000	
Services Consultant				
	Arup		020 7636 1531	
Cost Consultant				
	Equals Consulting		020 7580 3360	
Planning Consultant				
	TEMPLE		020 7394 3700	

Project Title
 Middlesex Hospital Annex
Client
 University College London
 Hospitals Charity (UCLHC)

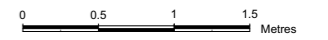
Drawing Title
 Lifetime Homes Unit Type 12

Project Number	Drawing Number	Revision
LD15 078.00	LFT_12	A

Scale @ A3
 1:50
 Date

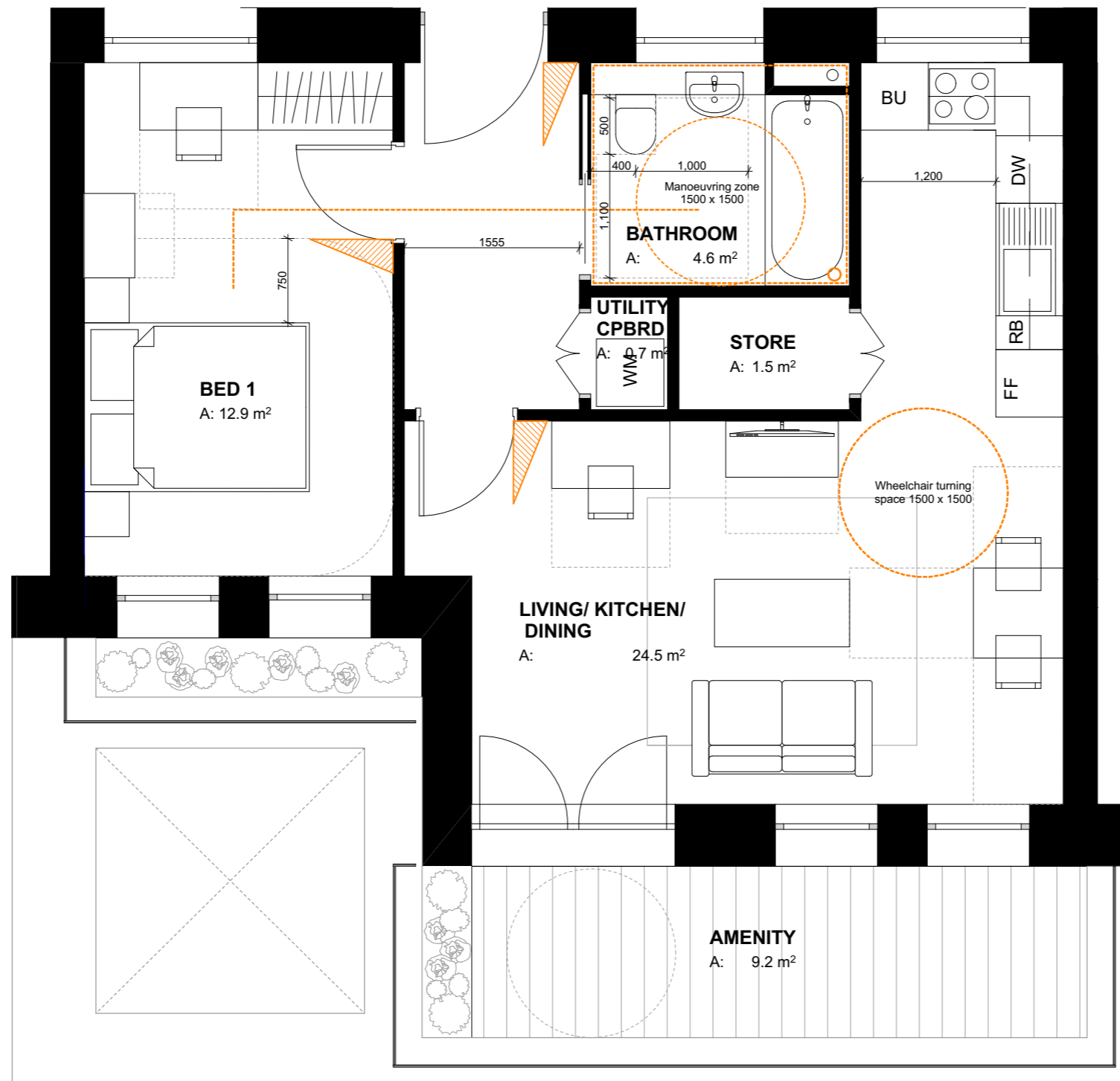
04/04/2017
 Architects

Notes
 - All dimensions to be checked on site
 - Do not scale off this drawing
 - All dimensions are shown in mm unless otherwise stated
 - Refer to drawing issue sheet for purpose of issue
 - If in doubt ask
 - © Llewelyn Davies
 Key plan



UNIT TYPE 13
UNIT NUMBERS FLOOR
 AL22 L04

Note:
 This unit has been designed in compliance with Approved Document M4(2), Lifetime Homes and London Housing Design Guidance.



REV-A	FOR PLANNING	04.04.17	GC
	FOR PLANNING	20.01.17	GC

No.	Revisions	Description	Date	By
<u>Structural Consultant</u>				
	AECOM		020 7061 7000	
<u>Services Consultant</u>				
	Arup		020 7636 1531	
<u>Cost Consultant</u>				
	Equals Consulting		020 7580 3360	
<u>Planning Consultant</u>				
	TEMPLE		020 7394 3700	

Project Title
 Middlesex Hospital Annex
Client
 University College London
 Hospitals Charity (UCLHC)
Drawing Title
 Lifetime Homes Unit Type 13

Project Number	Drawing Number	Revision
LD15 078.00	LFT_13	A

Scale @ A3
 1:50
 Date

04/04/2017
 Architects

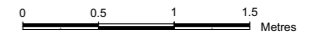
LLEWELYN DAVIES

3rd floor | 3-5 Rathbone Place | London | W1T 1HJ
 T +44(0)20 7907 7900 | E london@ldavies.com
 www.ldavies.com

Notes

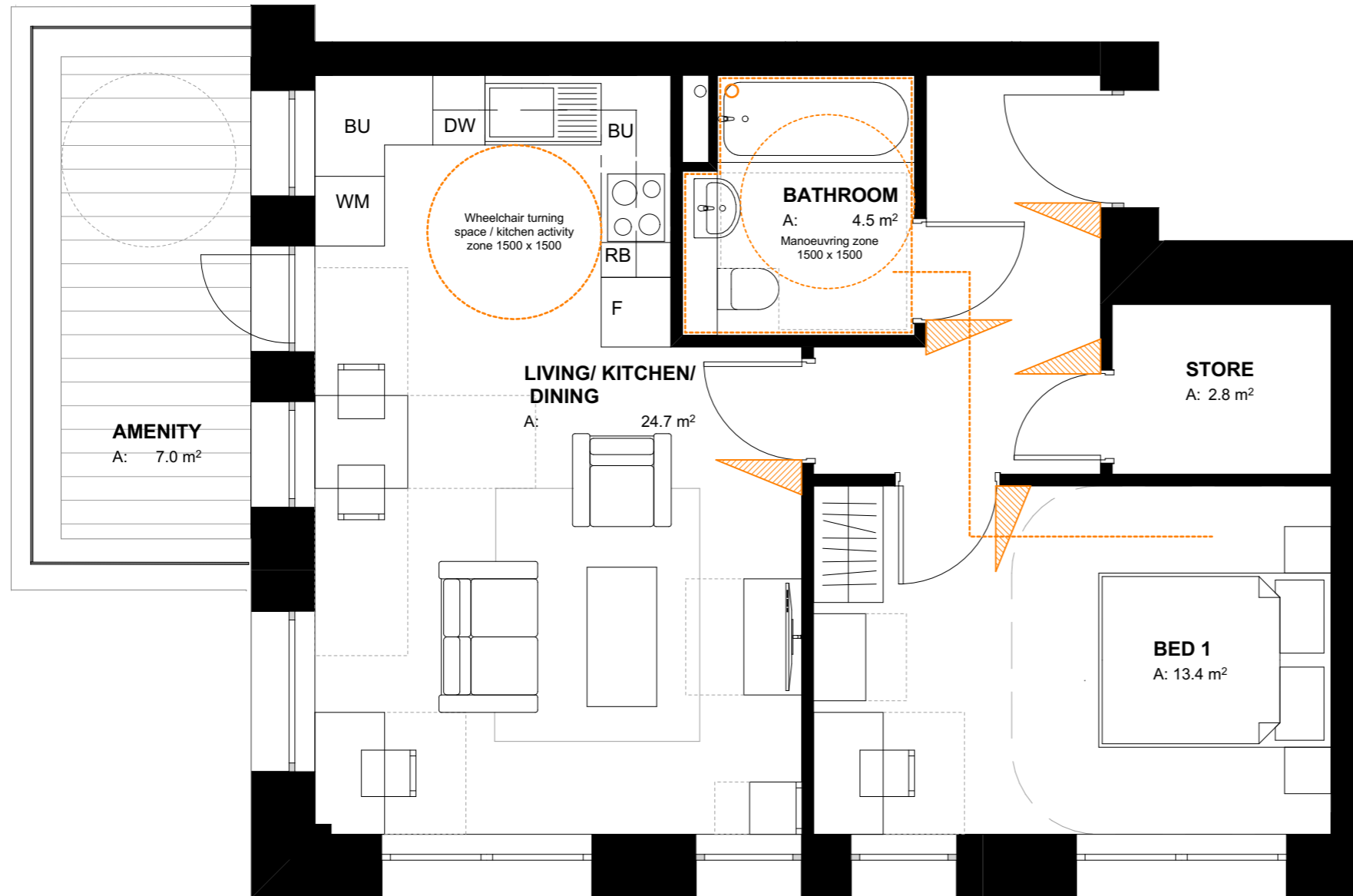
- All dimensions to be checked on site
- Do not scale off this drawing
- All dimensions are shown in mm unless otherwise stated
- Refer to drawing issue sheet for purpose of issue
- If in doubt ask
- © Llewelyn Davies

Key plan



UNIT TYPE 14
UNIT NUMBERS FLOOR
 AL23 L04

Note:
 This unit has been designed in compliance with Approved Document M4(2), Lifetime Homes and London Housing Design Guidance.



REV-A	FOR PLANNING	04.04.17	GC
	FOR PLANNING	20.01.17	GC

No.	Revisions	Description	Date	By
<u>Structural Consultant</u>				
AECOM			020 7061 7000	
<u>Services Consultant</u>				
Arup			020 7636 1531	
<u>Cost Consultant</u>				
Equals Consulting			020 7580 3360	
<u>Planning Consultant</u>				
TEMPLE			020 7394 3700	

Project Title
 Middlesex Hospital Annex

Client
 University College London
 Hospitals Charity (UCLHC)

Drawing Title
 Lifetime Homes Unit Type 14

Project Number	Drawing Number	Revision
LD15 078.00	LFT_14	A

Scale @ A3
 1:50

Date
 04/04/2017

Architects

LLEWELYN DAVIES

3rd floor | 3-5 Rathbone Place | London | W1T 1HJ
 T +44(0)20 7907 7900 | E london@ldavies.com
 www.ldavies.com

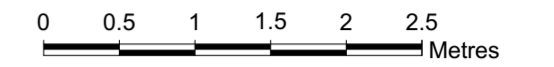


UNIT TYPE 15
UNIT NUMBERS AL26
FLOOR L05

Notes

- All dimensions to be checked on site
- Do not scale off this drawing
- All dimensions are shown in mm unless otherwise stated
- Refer to drawing issue sheet for purpose of issue
- If in doubt ask
- © Llewelyn Davies

Key plan



Note:

This unit has been designed in compliance with Approved Document M4(2), Lifetime Homes and London Housing Design Guidance.

REV-A	FOR PLANNING	04.04.17	GC
	FOR PLANNING	20.01.17	GC

No. Revisions	Description	Date	By
---------------	-------------	------	----

Structural Consultant

AECOM

Services Consultant

Arup

Cost Consultant

Equals Consulting

Planning Consultant

TEMPLE

Project Title

Middlesex Hospital Annex

Client

University College London

Hospitals Charity (UCLHC)

Drawing Title

Lifetime Homes Unit Type 15

Project Number	Drawing Number	Revision
LD15 078.00	LFT_15	A

Scale @ A2

1:50

Date

04/04/2017

Architects

LLEWELYN DAVIES

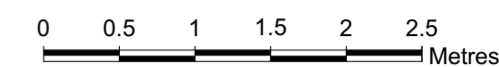
3rd floor | 3-5 Rathbone Place | London | W1T 1HJ
 T +44(0)20 7907 7900 | E london@davies.com

www.ldavies.com

Notes

- All dimensions to be checked on site
- Do not scale off this drawing
- All dimensions are shown in mm unless otherwise stated
- Refer to drawing issue sheet for purpose of issue
- If in doubt ask
- © Llewelyn Davies

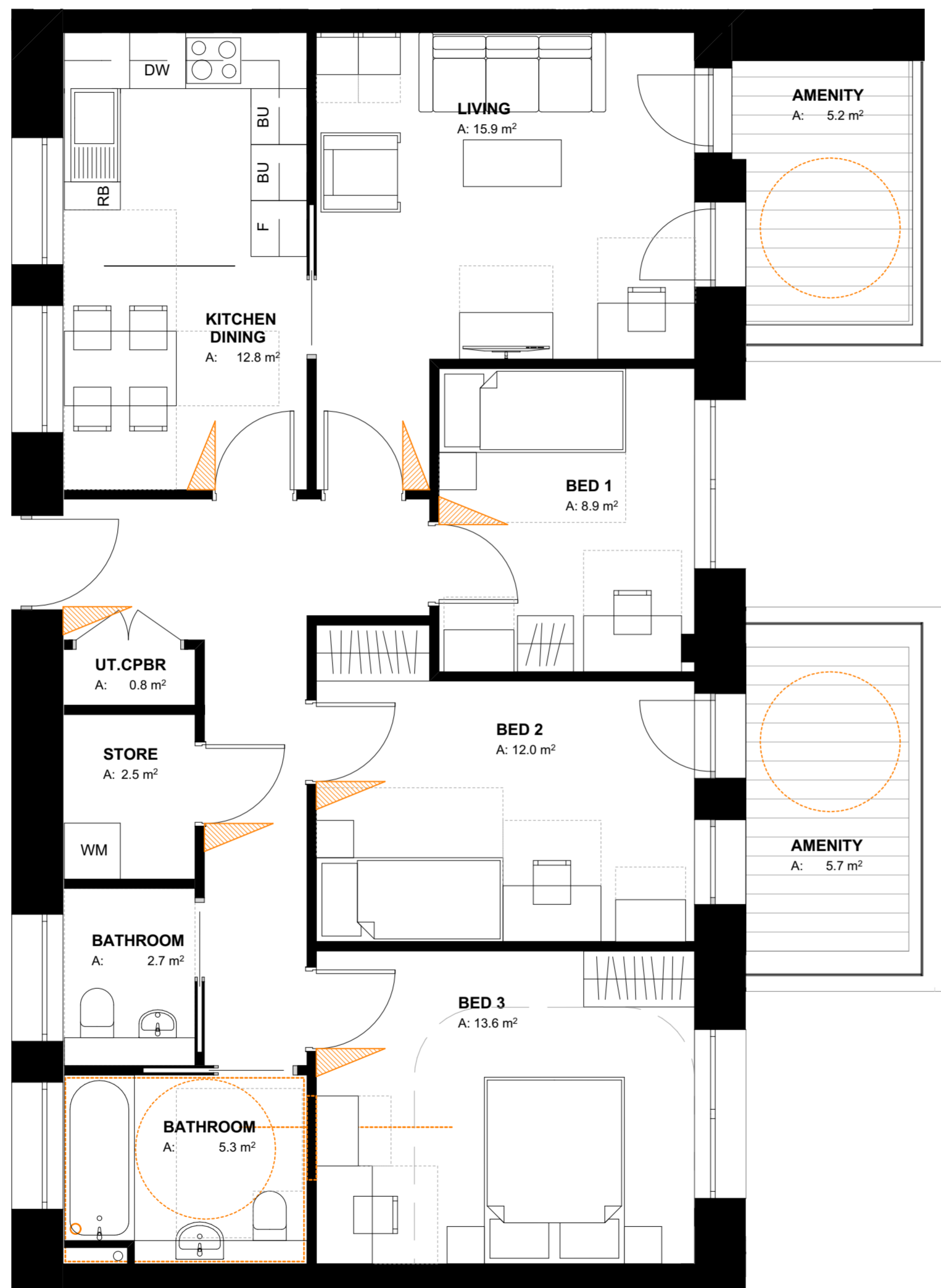
Key plan



Note:

This unit has been designed in compliance with Approved Document M4(2), Lifetime Homes and London Housing Design Guidance.

UNIT TYPE 16
UNIT NUMBERS AL20-AL 24
FLOOR L04



REV-A	FOR PLANNING	04.04.17	GC
	FOR PLANNING	20.01.17	GC

No. Revisions	Description	Date	By
---------------	-------------	------	----

Structural Consultant

AECOM

Services Consultant

Arup

Cost Consultant

Equals Consulting

Planning Consultant

TEMPLE

Project Title

Middlesex Hospital Annex

Client

University College London

Hospitals Charity (UCLHC)

Drawing Title

Lifetime Homes Unit Type 16

Project Number	Drawing Number	Revision
LD15 078.00	LFT_16	A

Scale @ A2

1:50

Date

04/04/2017

Architects

LLEWELYN DAVIES

3rd floor | 3-5 Rathbone Place | London | W1T 1HJ
 T +44(0)20 7907 7900 | E london@ldavies.com
 www.ldavies.com

Notes

- All dimensions to be checked on site
- Do not scale off this drawing
- All dimensions are shown in mm unless otherwise stated
- Refer to drawing issue sheet for purpose of issue
- If in doubt ask
- © Llewelyn Davies

Key plan



UNIT TYPE 17
UNIT NUMBERS AL30
FLOOR L05

Note:
 This unit has been designed in compliance with Approved Document M4(2), Lifetime Homes and London Housing Design Guidance.



REV-A	FOR PLANNING	04.04.17	GC
	FOR PLANNING	20.01.17	GC

No.	Revisions	Description	Date	By
<u>Structural Consultant</u>				
	AECOM		020 7061 7000	
<u>Services Consultant</u>				
	Arup		020 7636 1531	
<u>Cost Consultant</u>				
	Equals Consulting		020 7580 3360	
<u>Planning Consultant</u>				
	TEMPLE		020 7394 3700	

Project Title
 Middlesex Hospital Annex

Client
 University College London
 Hospitals Charity (UCLHC)

Drawing Title
 Lifetime Homes Unit Type 17

Project Number	Drawing Number	Revision
LD15 078.00	LFT_17	A

Scale @ A3
 1:50

Date
 04/04/2017

Architects

LLEWELYN DAVIES

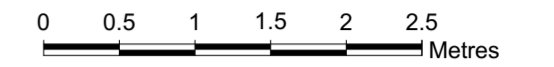
3rd floor | 3-5 Rathbone Place | London | W1T 1HJ
 T +44(0)20 7907 7900 | E london@ldavies.com
 www.ldavies.com



Notes

- All dimensions to be checked on site
- Do not scale off this drawing
- All dimensions are shown in mm unless otherwise stated
- Refer to drawing issue sheet for purpose of issue
- If in doubt ask
- © Llewelyn Davies

Key plan



Note:

This unit has been designed in compliance with Approved Document M4(2), Lifetime Homes and London Housing Design Guidance.

REV-A	FOR PLANNING	04.04.17	GC
	FOR PLANNING	20.01.17	GC

No. Revisions	Description	Date	By

Structural Consultant

AECOM

Services Consultant

Arup

Cost Consultant

Equals Consulting

Planning Consultant

TEMPLE

Project Title

Middlesex Hospital Annex

Client

University College London

Hospitals Charity (UCLHC)

Drawing Title

Lifetime Homes Unit Type 18

Project Number	Drawing Number	Revision
LD15 078.00	LFT_18	A

Scale @ A2

1:50

Date

04/04/2017

Architects

LLEWELYN DAVIES

3rd floor | 3-5 Rathbone Place | London | W1T 1HJ
T +44(0)20 7907 7900 | E london@davies.com

www.ldavies.com

Notes
 - All dimensions to be checked on site
 - Do not scale off this drawing
 - All dimensions are shown in mm unless otherwise stated
 - Refer to drawing issue sheet for purpose of issue
 - If in doubt ask
 - © Llewelyn Davies
 Key plan



UNIT TYPE 19	
UNIT NUMBERS	FLOOR
AISR01	L06
AISR04	L07

Note:
 This unit has been designed in compliance with Approved Document M4(2), Lifetime Homes and London Housing Design Guidance.



REV-A	FOR PLANNING	04.04.17	GC
	FOR PLANNING	20.01.17	GC

No.	Revisions	Description	Date	By

Structural Consultant
AECOM 020 7061 7000

Services Consultant
Arup 020 7636 1531

Cost Consultant
Equals Consulting 020 7580 3360

Planning Consultant
TEMPLE 020 7394 3700

Project Title
Middlesex Hospital Annex

Client
**University College London
 Hospitals Charity (UCLHC)**

Drawing Title
Lifetime Homes Unit Type 19

Project Number	Drawing Number	Revision
LD15 078.00	LFT_19	A

Scale @ A3
 1:50

Date
 04/04/2017

Architects

LLEWELYN DAVIES

3rd floor | 3-5 Rathbone Place | London | W1T 1HJ
 T +44(0)20 7907 7900 | E london@ldavies.com
 www.ldavies.com

Notes

- All dimensions to be checked on site
- Do not scale off this drawing
- All dimensions are shown in mm unless otherwise stated
- Refer to drawing issue sheet for purpose of issue
- If in doubt ask
- © Llewelyn Davies

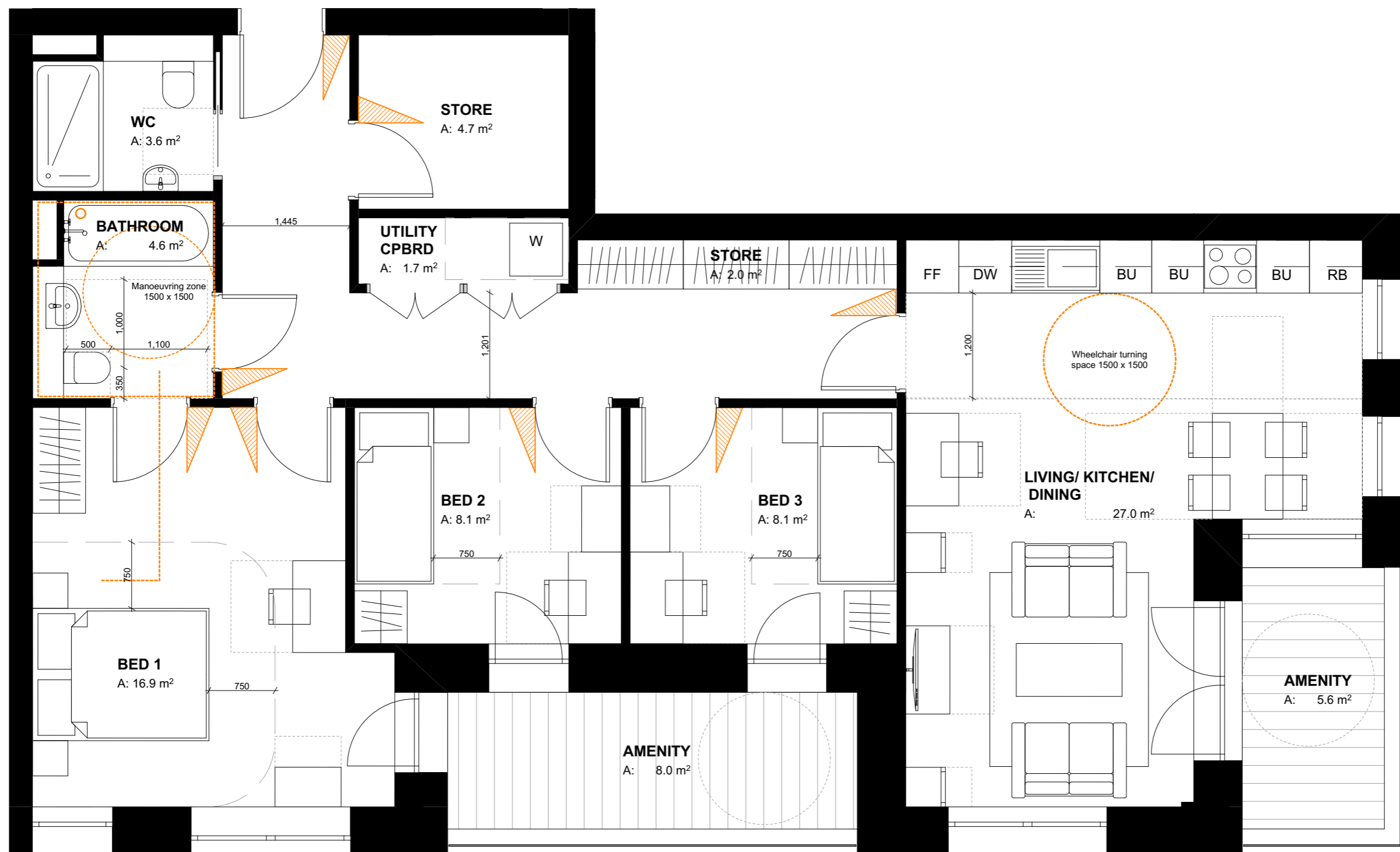
Key plan



UNIT TYPE 20

UNIT NUMBERS	FLOOR
AISR02	L06
AISR05	L07

Note:
This unit has been designed in compliance with Approved Document M4(2), Lifetime Homes and London Housing Design Guidance.



REV-A	FOR PLANNING	04.04.17	GC
	FOR PLANNING	20.01.17	GC

No.	Revisions	Description	Date	By
		Structural Consultant		
		AECOM	020 7061 7000	
		Services Consultant		
		Arup	020 7636 1531	
		Cost Consultant		
		Equals Consulting	020 7580 3360	
		Planning Consultant		
		TEMPLE	020 7394 3700	

Project Title
Middlesex Hospital Annex

Client
University College London
Hospitals Charity (UCLHC)

Drawing Title
Lifetime Homes Unit Type 20

Project Number	Drawing Number	Revision
LD15 078.00	LFT_20	A

Scale @ A3
1:50

Date
04/04/2017

Architects

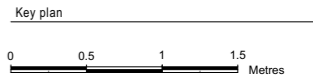
LLEWELYN DAVIES

3rd floor | 3-5 Rathbone Place | London | W1T 1HJ
T +44(0)20 7907 7900 | E london@ldavies.com
www.ldavies.com



UNIT TYPE 21
UNIT NUMBERS M03 **FLOOR** L00

- Notes**
- All dimensions to be checked on site
 - Do not scale off this drawing
 - All dimensions are shown in mm unless otherwise stated
 - Refer to drawing issue sheet for purpose of issue
 - If in doubt ask
 - © Llewelyn Davies



Note:
 This unit has been designed in compliance with Approved Document M4(2), Lifetime Homes and London Housing Design Guidance.

REV-A	FOR PLANNING	04.04.17	GC
	FOR PLANNING	20.01.17	GC

No.	Revisions	Description	Date	By
<u>Structural Consultant</u>				
	AECOM		020 7061 7000	
<u>Services Consultant</u>				
	Arup		020 7636 1531	
<u>Cost Consultant</u>				
	Equals Consulting		020 7580 3360	
<u>Planning Consultant</u>				
	TEMPLE		020 7394 3700	

Project Title
 Middlesex Hospital Annex
Client
 University College London
 Hospitals Charity (UCLHC)

Drawing Title
 Lifetime Homes Unit Type 21

Project Number	Drawing Number	Revision
LD15 078.00	LFT_21	A

Scale @ A3
 1:50
 Date
 04/04/2017

Architects

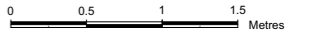
LLEWELYN DAVIES

3rd floor | 3-5 Rathbone Place | London | W1T 1HJ
 T +44(0)20 7907 7900 | E london@ldavies.com
 www.ldavies.com



UNIT TYPE 22
UNIT NUMBERS M04 **FLOOR** L00

- Notes**
- All dimensions to be checked on site
 - Do not scale off this drawing
 - All dimensions are shown in mm unless otherwise stated
 - Refer to drawing issue sheet for purpose of issue
 - If in doubt ask
 - © Llewelyn Davies



Note:
 This unit has been designed in compliance with Approved Document M4(3)(2)(b), Lifetime Homes and London Housing Design Guidance.

REV-A	FOR PLANNING	04.04.17	GC
	FOR PLANNING	20.01.17	GC

No.	Revisions	Description	Date	By
Structural Consultant				
	AECOM		020 7061 7000	
Services Consultant				
	Arup		020 7636 1531	
Cost Consultant				
	Equals Consulting		020 7580 3360	
Planning Consultant				
	TEMPLE		020 7394 3700	

Project Title
 Middlesex Hospital Annex
Client
 University College London
 Hospitals Charity (UCLHC)

Drawing Title
 Lifetime Homes Unit Type 22 -
 Wheelchair Accessible

Project Number	Drawing Number	Revision
LD15 078.00	LFT_22	A

Scale @ A3
 1:50
 Date

04/04/2017
 Architects

LLEWELYN DAVIES

UNIT TYPE 23

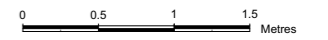
UNIT NUMBERS FLOOR

M05 L01

M07 L02



Notes
 - All dimensions to be checked on site
 - Do not scale off this drawing
 - All dimensions are shown in mm unless otherwise stated
 - Refer to drawing issue sheet for purpose of issue
 - If in doubt ask
 - © Llewelyn Davies
 Key plan



Note:
 This unit has been designed in compliance with Approved Document M4(2), Lifetime Homes and London Housing Design Guidance.

REV-A	FOR PLANNING	04.04.17	GC	
	FOR PLANNING	20.01.17	GC	
No.	Revisions	Description	Date	By
<u>Structural Consultant</u>				
	AECOM		020 7061 7000	
<u>Services Consultant</u>				
	Arup		020 7636 1531	
<u>Cost Consultant</u>				
	Equals Consulting		020 7580 3360	
<u>Planning Consultant</u>				
	TEMPLE		020 7394 3700	

Project Title
 Middlesex Hospital Annex
Client
 University College London
 Hospitals Charity (UCLHC)

Drawing Title
 Lifetime Homes Unit Type 23

Project Number	Drawing Number	Revision
LD15 078.00	LFT_23	A

Scale @ A3
 1:50
 Date
 04/04/2017

Architects

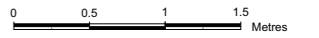
LLEWELYN DAVIES

3rd floor | 3-5 Rathbone Place | London | W1T 1HJ
 T +44(0)20 7907 7900 | E london@ldavies.com
 www.ldavies.com



UNIT TYPE 24
UNIT NUMBERS M06 **FLOOR** L01

Notes
 - All dimensions to be checked on site
 - Do not scale off this drawing
 - All dimensions are shown in mm unless otherwise stated
 - Refer to drawing issue sheet for purpose of issue
 - If in doubt ask
 - © Llewelyn Davies
 Key plan



Note:
 This unit has been designed in compliance with Approved Document M4(2), Lifetime Homes and London Housing Design Guidance.

REV-A	FOR PLANNING	04.04.17	GC
	FOR PLANNING	20.01.17	GC

No.	Revisions	Description	Date	By
<u>Structural Consultant</u>				
	AECOM		020 7061 7000	
<u>Services Consultant</u>				
	Arup		020 7636 1531	
<u>Cost Consultant</u>				
	Equals Consulting		020 7580 3360	
<u>Planning Consultant</u>				
	TEMPLE		020 7394 3700	

Project Title
 Middlesex Hospital Annex
Client
 University College London
 Hospitals Charity (UCLHC)

Drawing Title
 Lifetime Homes Unit Type 24

Project Number	Drawing Number	Revision
LD15 078.00	LFT_24	A

Scale @ A3
 1:50
 Date
 04/04/2017

Architects

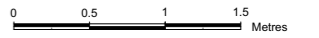
LLEWELYN DAVIES

3rd floor | 3-5 Rathbone Place | London | W1T 1HJ
 T +44(0)20 7907 7900 | E london@ldavies.com
 www.ldavies.com



UNIT TYPE 25
UNIT NUMBERS M08 **FLOOR** L02

Notes
 - All dimensions to be checked on site
 - Do not scale off this drawing
 - All dimensions are shown in mm unless otherwise stated
 - Refer to drawing issue sheet for purpose of issue
 - If in doubt ask
 - © Llewelyn Davies
 Key plan



Note:
 This unit has been designed in compliance with Approved Document M4(2), Lifetime Homes and London Housing Design Guidance.

REV-A FOR PLANNING 04.04.17 GC
 FOR PLANNING 20.01.17 GC

No.	Revisions	Description	Date	By
Structural Consultant				
AECOM			020 7061 7000	
Services Consultant				
Arup			020 7636 1531	
Cost Consultant				
Equals Consulting			020 7580 3360	
Planning Consultant				
TEMPLE			020 7394 3700	

Project Title
 Middlesex Hospital Annex
Client
 University College London
 Hospitals Charity (UCLHC)

Drawing Title
 Lifetime Homes Unit Type 25

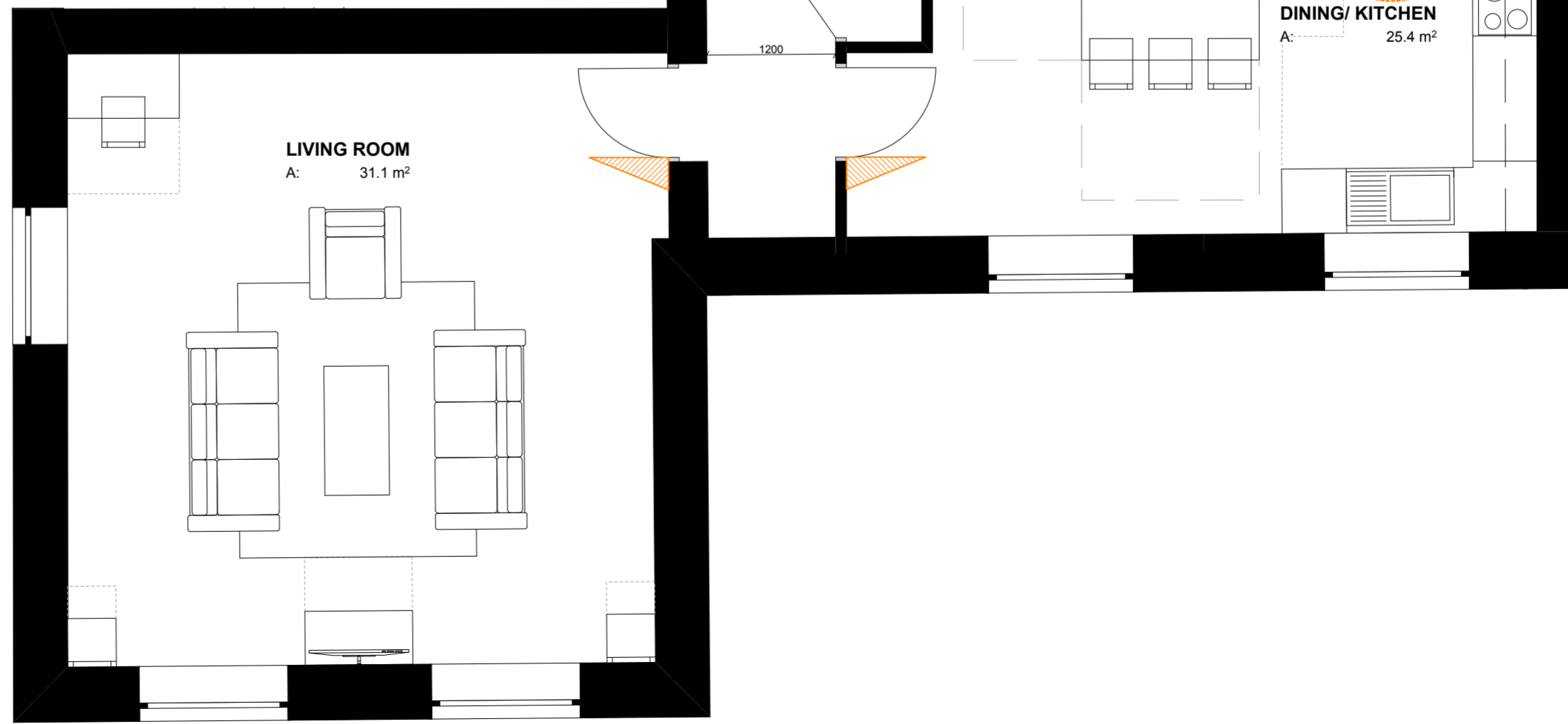
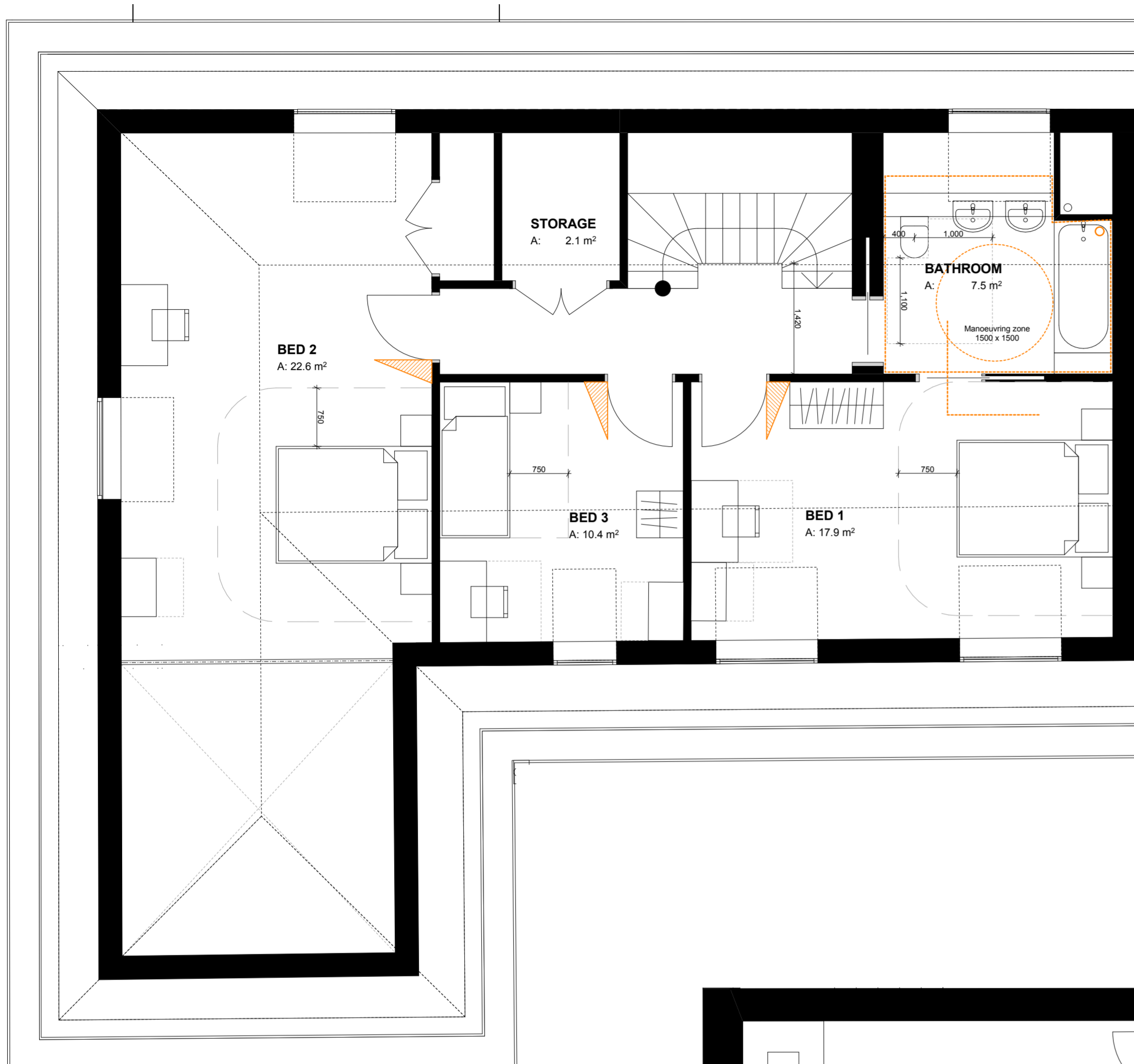
Project Number LD15 078.00 **Drawing Number** LFT_25 **Revision** A

Scale @ A3
 1:50
Date
 04/04/2017

Architects
 LLEWELYN DAVIES

LLEWELYN DAVIES

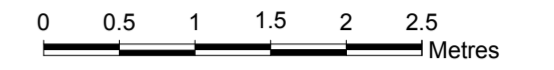
3rd floor | 3-5 Rathbone Place | London | W1T 1HJ
 T +44(0)20 7907 7900 | E london@ldavies.com
 www.ldavies.com



Notes

- All dimensions to be checked on site
- Do not scale off this drawing
- All dimensions are shown in mm unless otherwise stated
- Refer to drawing issue sheet for purpose of issue
- If in doubt ask
- © Llewelyn Davies

Key plan



No. Revisions	Description	Date	By
REV-A	FOR PLANNING	04.04.17	GC
	FOR PLANNING	20.01.17	GC

Structural Consultant

AECOM

Services Consultant

Arup

Cost Consultant

Equals Consulting

Planning Consultant

TEMPLE

Project Title

Middlesex Hospital Annex

Client

University College London

Hospitals Charity (UCLHC)

Drawing Title

Lifetime Homes Unit Type 26

Project Number	Drawing Number	Revision
LD15 078.00	LFT_26	A

Scale @ A2

1:50

Date

04/04/2017

Architects

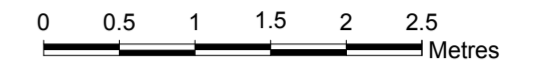
LLEWELYN DAVIES

UNIT TYPE 27
 UNIT NUMBERS M10 FLOOR L03/4

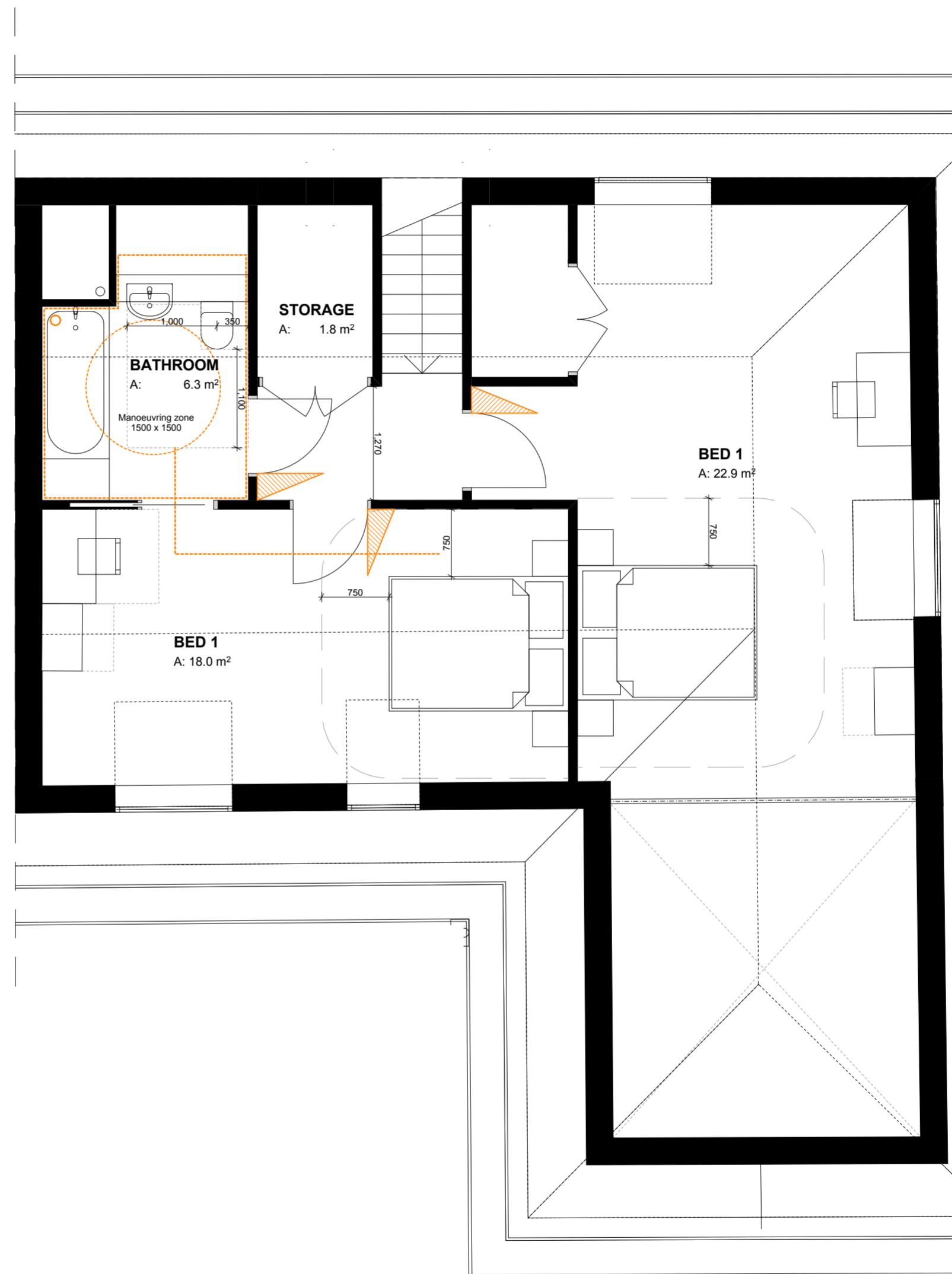
Notes

- All dimensions to be checked on site
- Do not scale off this drawing
- All dimensions are shown in mm unless otherwise stated
- Refer to drawing issue sheet for purpose of issue
- If in doubt ask
- © Llewelyn Davies

Key plan



Note:
 This unit has been designed in compliance with Approved Document M4(2), Lifetime Homes and London Housing Design Guidance.



No. Revisions	Description	Date	By
REV-A	FOR PLANNING	04.04.17	GC
	FOR PLANNING	20.01.17	GC

Structural Consultant

AECOM

Services Consultant

Arup

Cost Consultant

Equals Consulting

Planning Consultant

TEMPLE

Project Title

Middlesex Hospital Annex

Client

University College London

Hospitals Charity (UCLHC)

Drawing Title

Lifetime Homes Unit Type 27

Project Number	Drawing Number	Revision
LD15 078.00	LFT_27	A

Scale @ A2

1:50

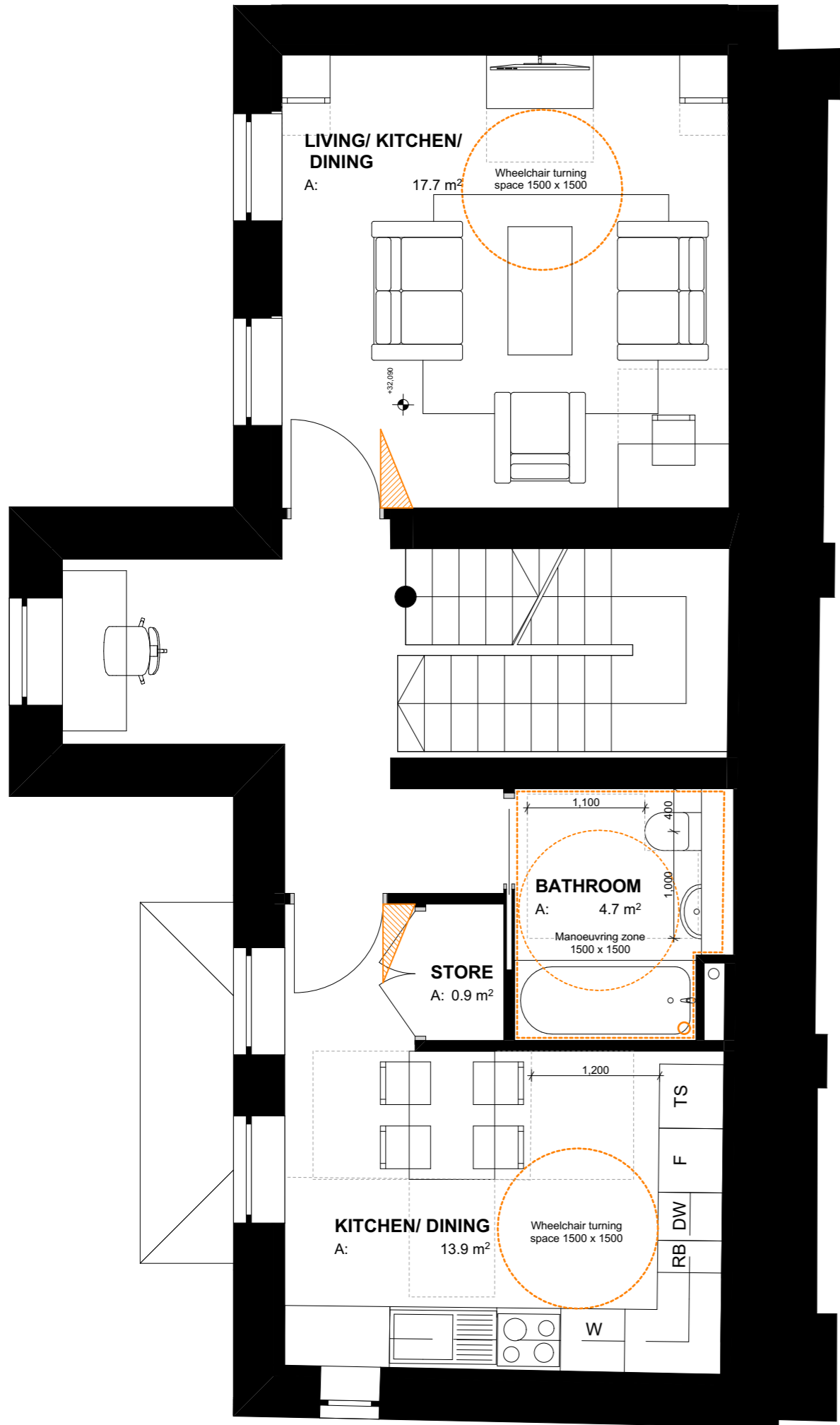
Date

04/04/2017

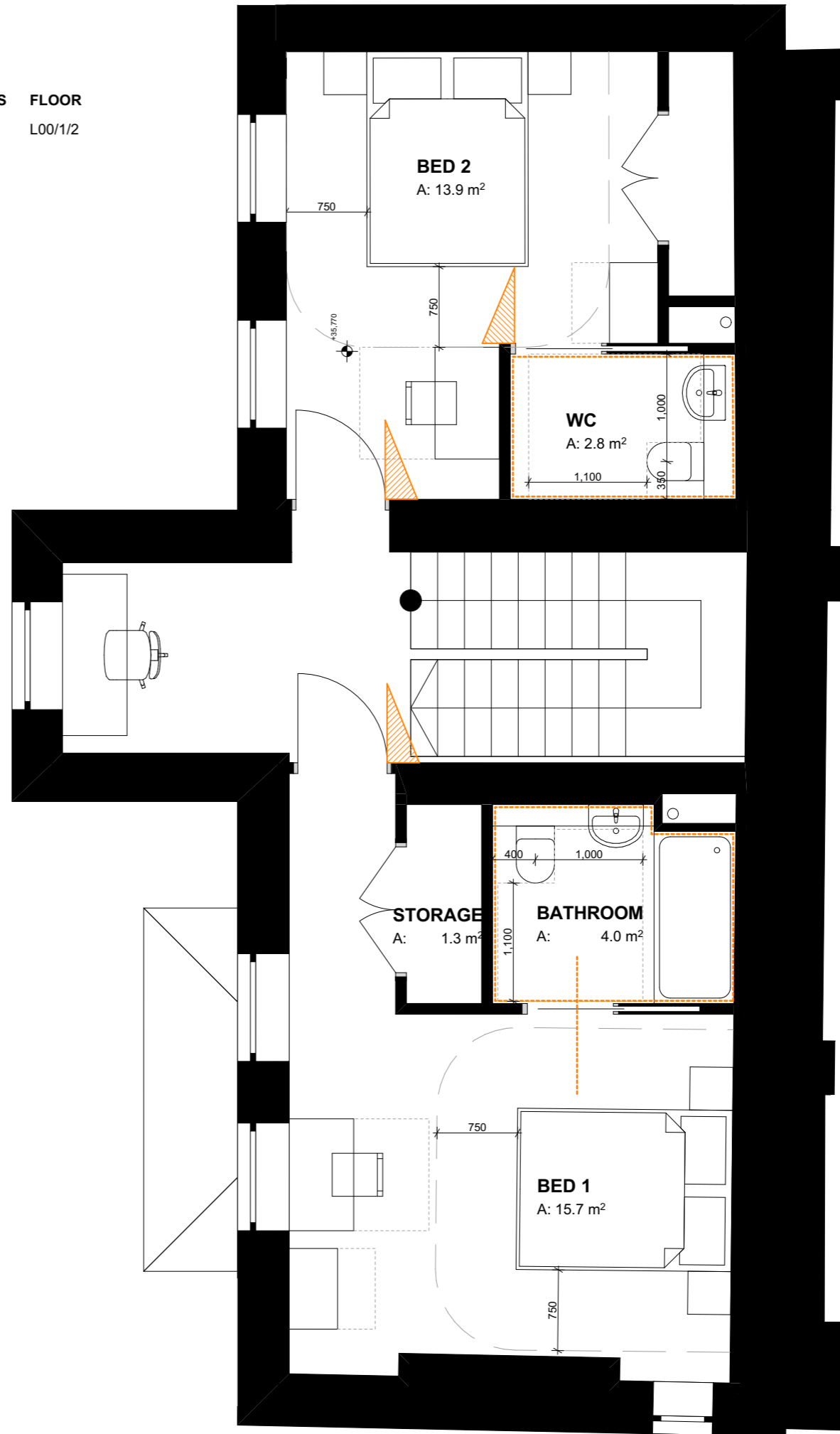
Architects

LLEWELYN DAVIES

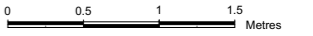
3rd floor | 3-5 Rathbone Place | London | W1T 1HJ
 T +44(0)20 7907 7900 | E london@davies.com
 www.ldavies.com



UNIT TYPE 28
UNIT NUMBERS AI 01
FLOOR L00/1/2



Notes
- All dimensions to be checked on site
- Do not scale off this drawing
- All dimensions are shown in mm unless otherwise stated
- Refer to drawing issue sheet for purpose of issue
- If in doubt ask
- © Llewelyn Davies



Note:
This unit has been designed in compliance with Approved Document M4(2), Lifetime Homes and London Housing Design Guidance.

REV-A	FOR PLANNING	04.04.17	GC
	FOR PLANNING	20.01.17	GC

No.	Revisions	Description	Date	By
		Structural Consultant		
		AECOM	020 7061 7000	
		Services Consultant		
		Arup	020 7636 1531	
		Cost Consultant		
		Equals Consulting	020 7580 3360	
		Planning Consultant		
		TEMPLE	020 7394 3700	

Project Title
Middlesex Hospital Annex

Client
University College London
Hospitals Charity (UCLHC)

Drawing Title
Lifetime Homes Unit Type 28

Project Number	Drawing Number	Revision
LD15 078.00	LFT-28	A

Scale @ A3
1:50
Date
04/04/2017
Architects

LLEWELYN DAVIES

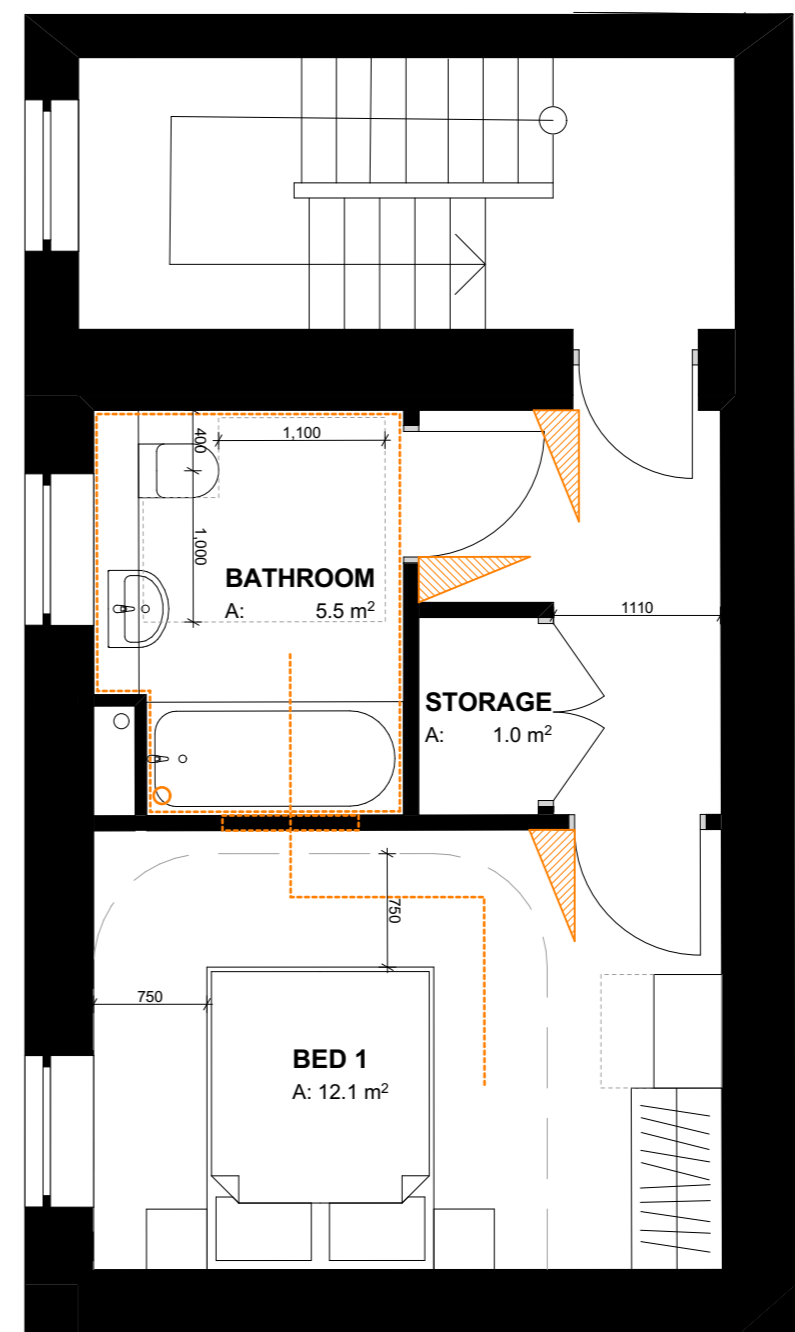
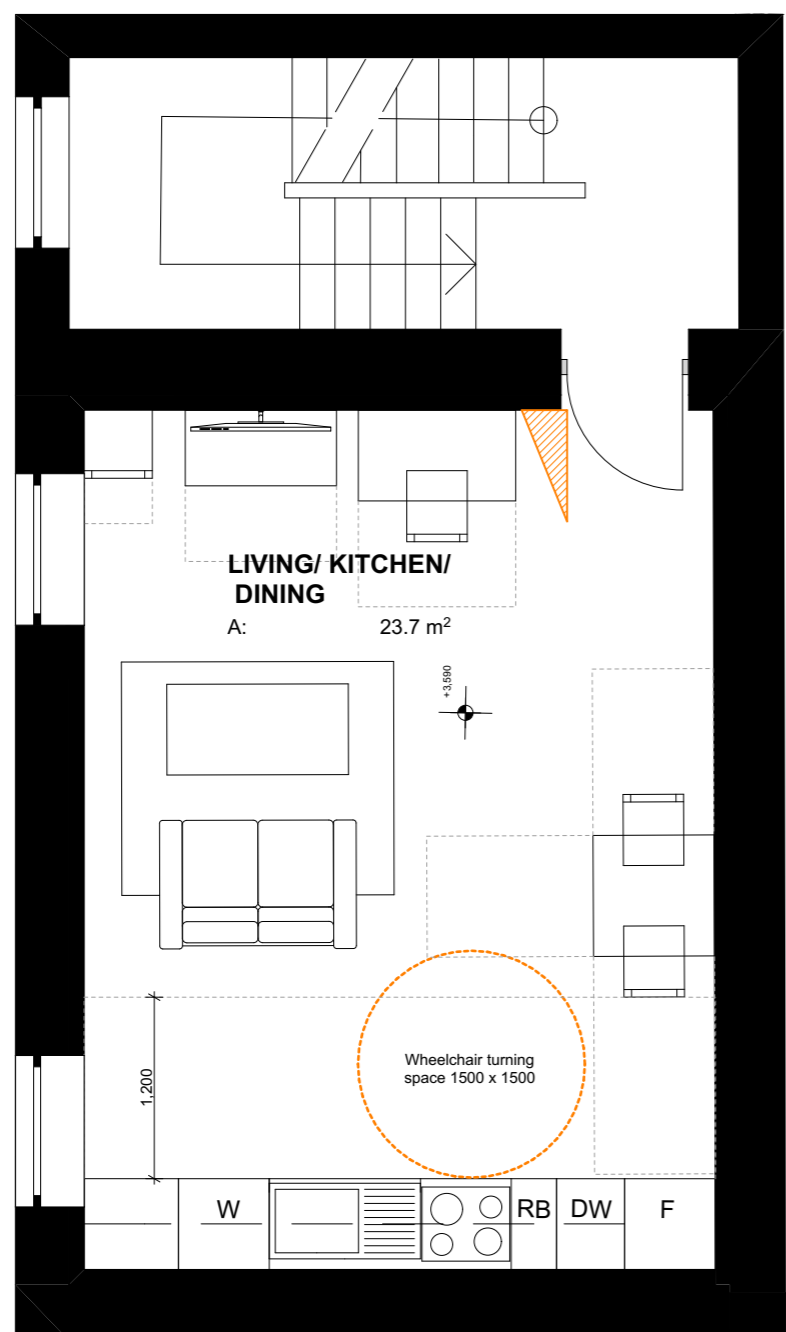
3rd floor | 3-5 Rathbone Place | London | W1T 1HJ
T +44(0)20 7907 7900 | E london@ldavies.com
www.ldavies.com

Notes
 - All dimensions to be checked on site
 - Do not scale off this drawing
 - All dimensions are shown in mm unless otherwise stated
 - Refer to drawing issue sheet for purpose of issue
 - If in doubt ask
 - © Llewelyn Davies
 Key plan



UNIT TYPE 29
UNIT NUMBERS AI 02 **FLOOR** L00/1/2

Note:
 This unit has been designed in compliance with Approved Document M4(2), Lifetime Homes and London Housing Design Guidance.



REV-A	FOR PLANNING	04.04.17	GC
	FOR PLANNING	20.01.17	GC

No.	Revisions	Description	Date	By
		Structural Consultant		
		AECOM	020 7061 7000	
		Services Consultant		
		Arup	020 7636 1531	
		Cost Consultant		
		Equals Consulting	020 7580 3360	
		Planning Consultant		
		TEMPLE	020 7394 3700	

Project Title
 Middlesex Hospital Annex
 Client
 University College London
 Hospitals Charity (UCLHC)

Drawing Title
 Lifetime Homes Unit Type 29

Project Number	Drawing Number	Revision
LD15 078.00	LFT-29	A

Scale @ A3
 1:50
 Date

04/04/2017
 Architects

LLEWELYN DAVIES

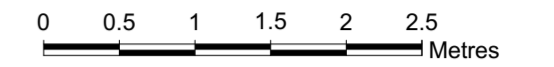
3rd floor | 3-5 Rathbone Place | London | W1T 1HJ
 T +44(0)20 7907 7900 | E london@ldavies.com
 www.ldavies.com

UNIT TYPE 30
UNIT NUMBERS FLOOR
 M01 L00/1/2

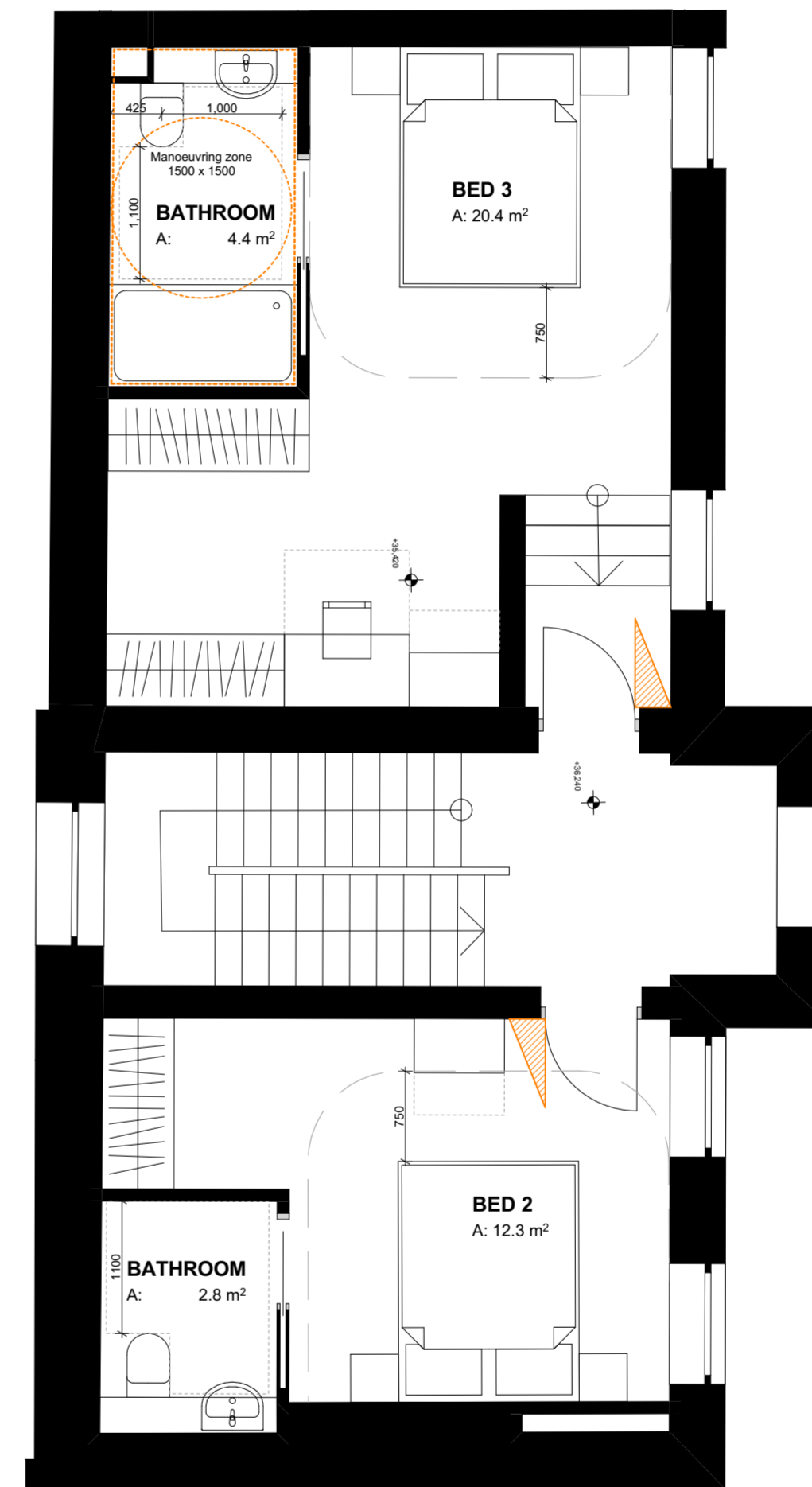
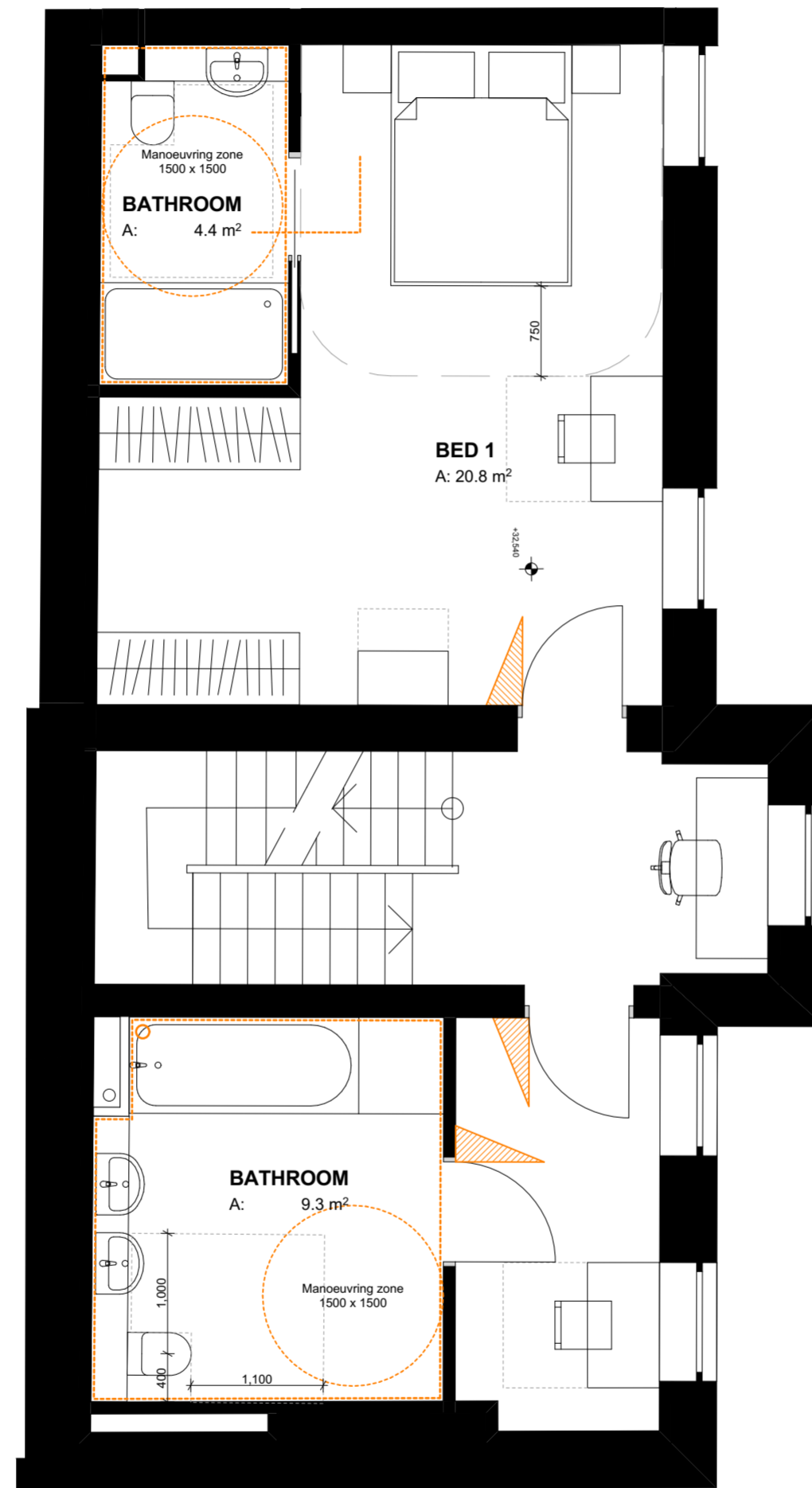
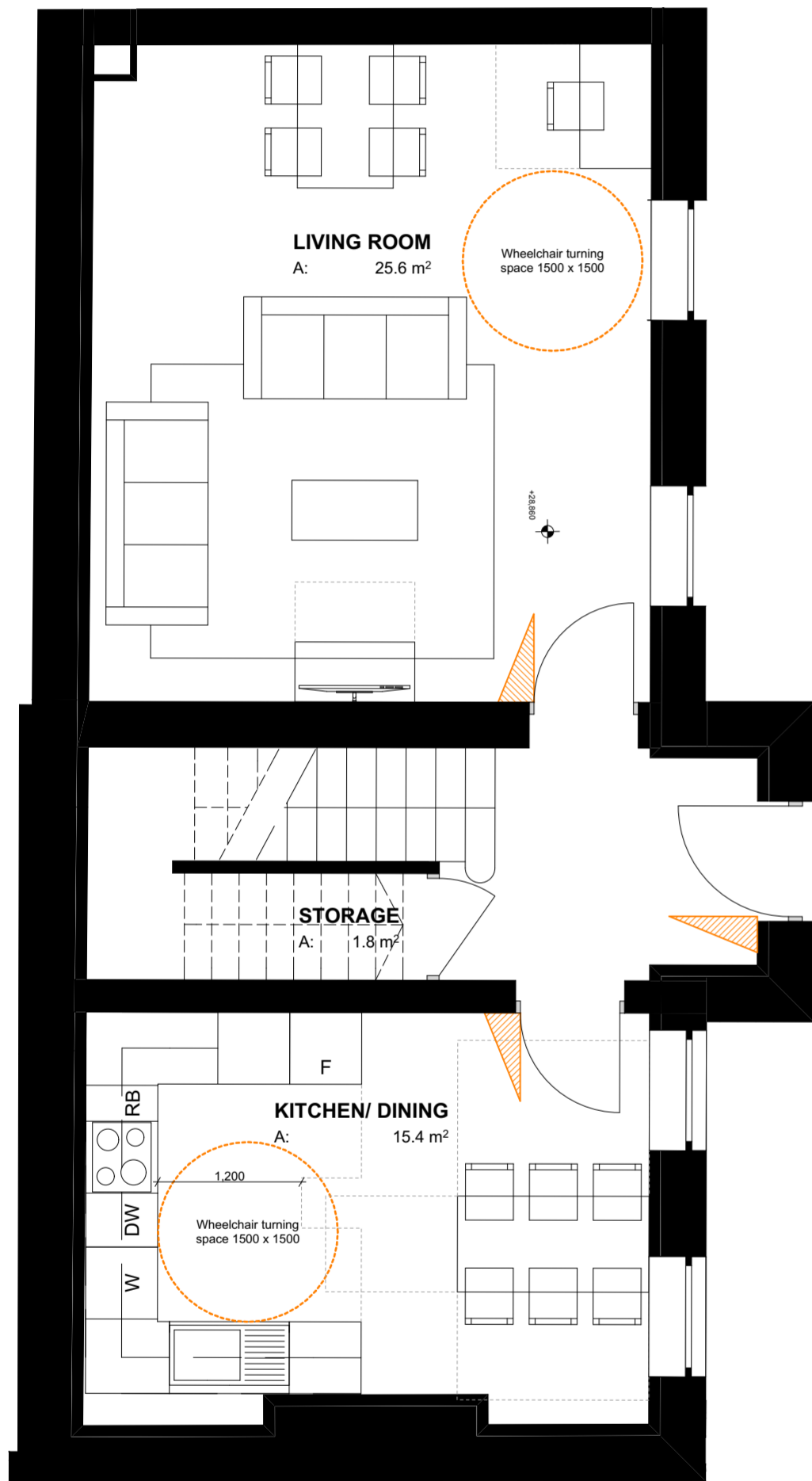
Notes

- All dimensions to be checked on site
- Do not scale off this drawing
- All dimensions are shown in mm unless otherwise stated
- Refer to drawing issue sheet for purpose of issue
- If in doubt ask
- © Llewelyn Davies

Key plan



Note:
 This unit has been designed in compliance with Approved Document M4(2), Lifetime Homes and London Housing Design Guidance.



No. Revisions	Description	Date	By
REV-A	FOR PLANNING	04.04.17	GC
	FOR PLANNING	20.01.17	GC

Structural Consultant

AECOM

Services Consultant

Arup

Cost Consultant

Equals Consulting

Planning Consultant

TEMPLE

Project Title

Middlesex Hospital Annex

Client

University College London

Hospitals Charity (UCLHC)

Drawing Title

Lifetime Homes Unit Type 30

Project Number	Drawing Number	Revision
LD15 078.00	LFT-30	A

Scale @ A2

1:50

Date

04/04/2017

Architects

LLEWELYN DAVIES

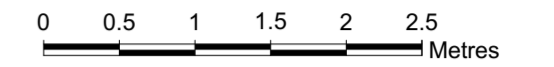
3rd floor | 3-5 Rathbone Place | London | W1T 1HJ
 T +44(0)20 7907 7900 | E london@ldavies.com
 www.ldavies.com

UNIT TYPE 31
UNIT NUMBERS FLOOR
 M02 L00/1/2

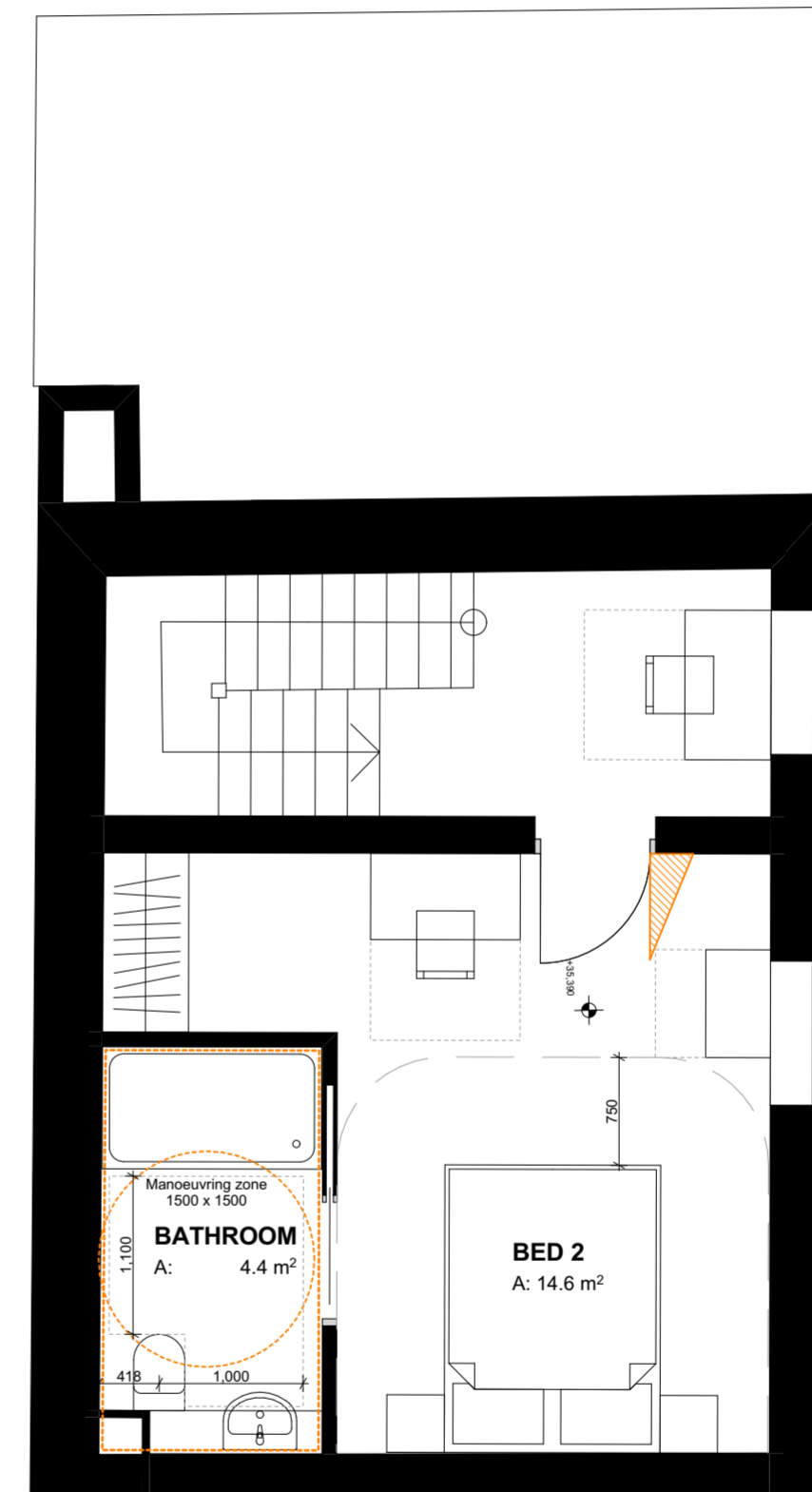
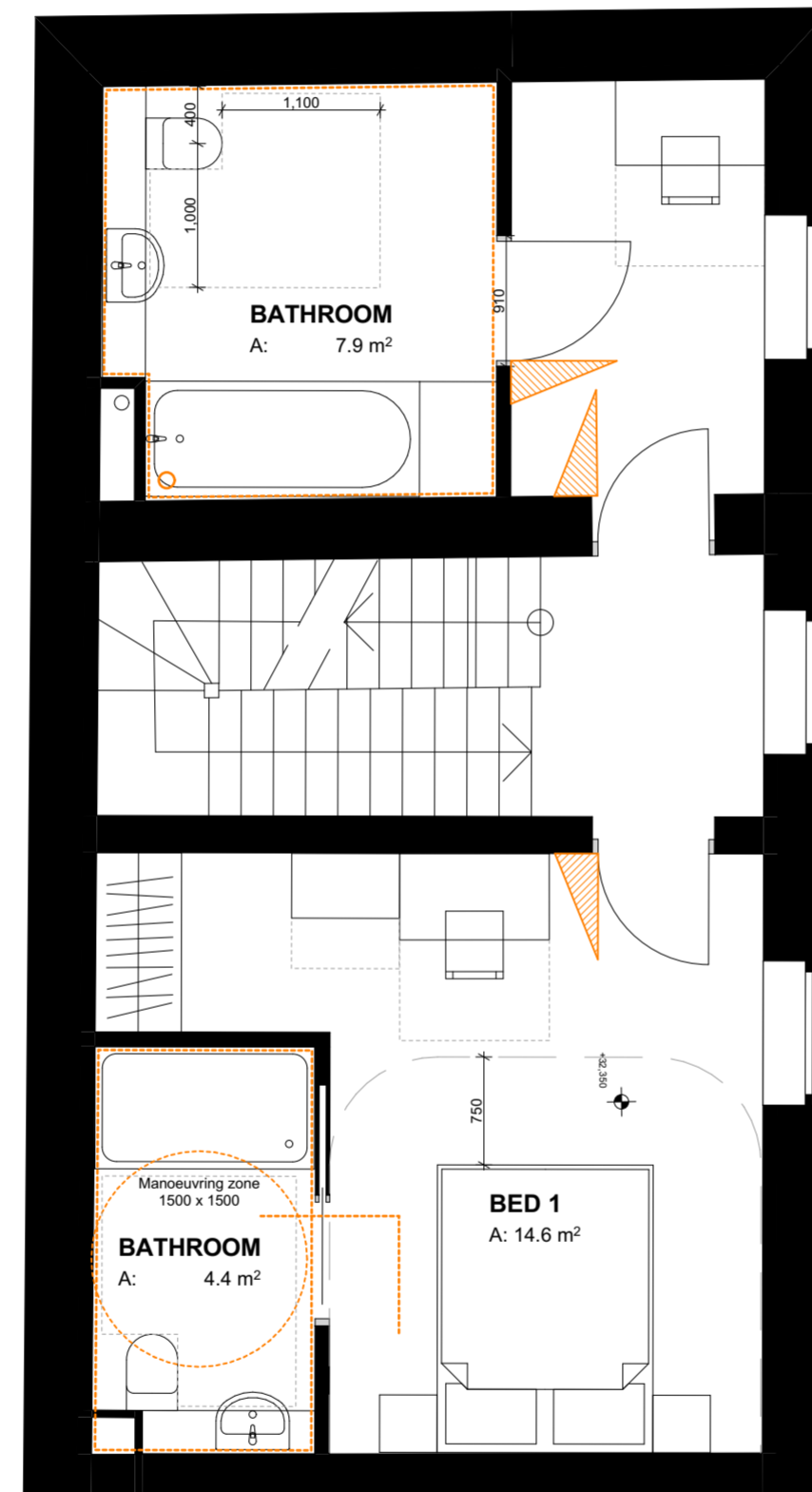
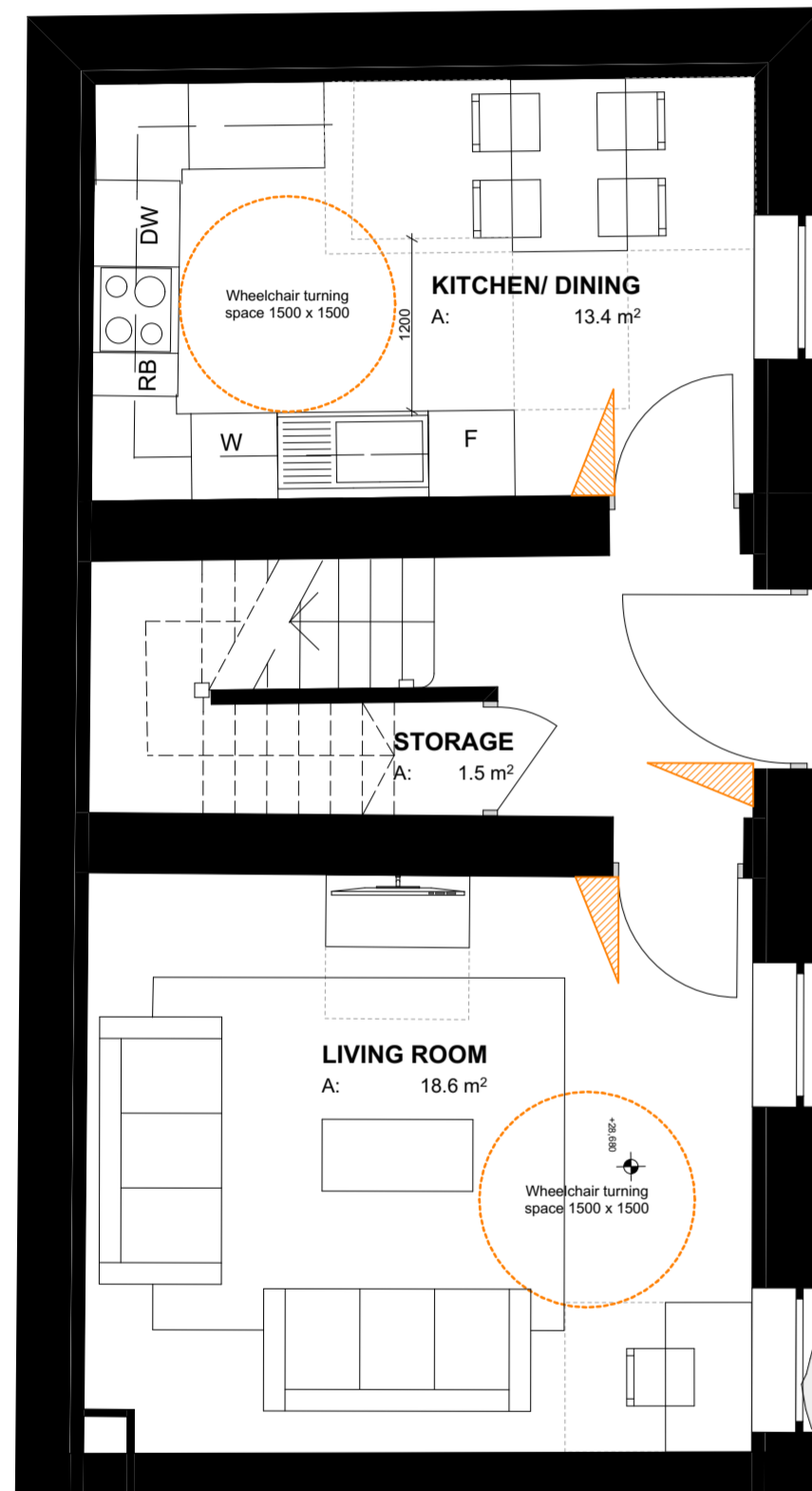
Notes

- All dimensions to be checked on site
- Do not scale off this drawing
- All dimensions are shown in mm unless otherwise stated
- Refer to drawing issue sheet for purpose of issue
- If in doubt ask
- © Llewelyn Davies

Key plan



Note:
 This unit has been designed in compliance with Approved Document M4(2), Lifetime Homes and London Housing Design Guidance.



No. Revisions	Description	Date	By
REV-A	FOR PLANNING	04.04.17	GC
	FOR PLANNING	20.01.17	GC

Structural Consultant

AECOM

Services Consultant

Arup

Cost Consultant

Equals Consulting

Planning Consultant

TEMPLE

Project Title

Middlesex Hospital Annex

Client

University College London

Hospitals Charity (UCLHC)

Drawing Title

Lifetime Homes Unit Type 31

Project Number	Drawing Number	Revision
LD15 078.00	LFT-31	A

Scale @ A2

1:50

Date

04/04/2017

Architects

LLEWELYN DAVIES

3rd floor | 3-5 Rathbone Place | London | W1T 1HJ
 T +44(0)20 7907 7900 | E london@ldavies.com
 www.ldavies.com