

Rev.	Date	Description	Eng.	App.

Drawing number:

**TUV-XX-05-PL-M55-001**

Client:

BT

Architect:

Project:  
BT TOWER  
THIRD FLOOR WEST  
DATA HALL

Series:

MECHANICAL

Drawing Status:

TENDER

Mechanical & Electrical  
Consulting Engineers

TUV SUD Limited  
246, The Boulevard, 2nd Floor,  
Glasgow, Scotland G2 4AA  
Tel: 0141 221 9686 Fax: 0141 221 6088  
e-mail: glasgow-admin@tuv-sud.co.uk  
Web: www.tuv-sud.co.uk/wallacewhite

Wallace White

Abertien Bellair Donegal Edinburgh Glasgow London Warrington UAE

Eng./CAD JS/SJS Checked: SMG/KMK

Title:  
FIFTH FLOOR PLAN  
AIR CONDITIONING LAYOUT

Scale(s): 1:50 @ A1 Date: MAR 2017

Project Number: **G1689** Revision:

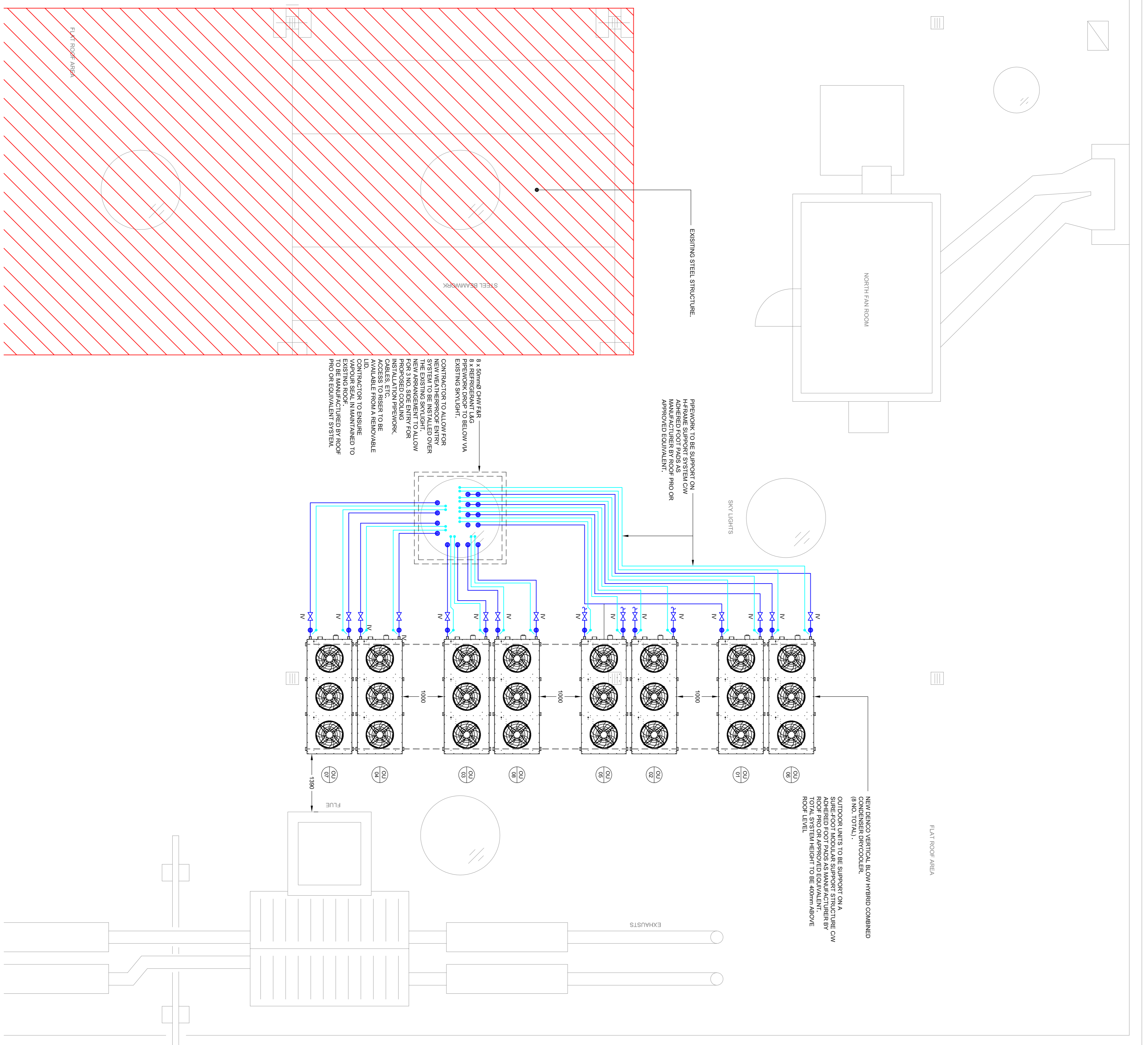
Drawing number: **TUV-XX-05-PL-M55-001**

**LEGEND**

- CHILLED WATER PIPEWORK
- REFRIGERANT PIPEWORK
- MDPVC CONDENSATE PIPEWORK
- CONTROL S WIRING
- ① - SUPPLY AIR TEMPERATURE SENSOR
- CHILLED WATER
- CHILLED WATER
- L&G - REFRIGERANT LIQUID AND GAS PIPEWORK
- F&R - FLOW AND RETURN
- IV - ISOLATING VALVE
- DFA - DROP FROM ABOVE
- DR - DROP FROM
- RT - RISE TO
- LL - LOW LEVEL
- HL - HIGH LEVEL
- RE - RODDING EYE

**GENERAL NOTES**

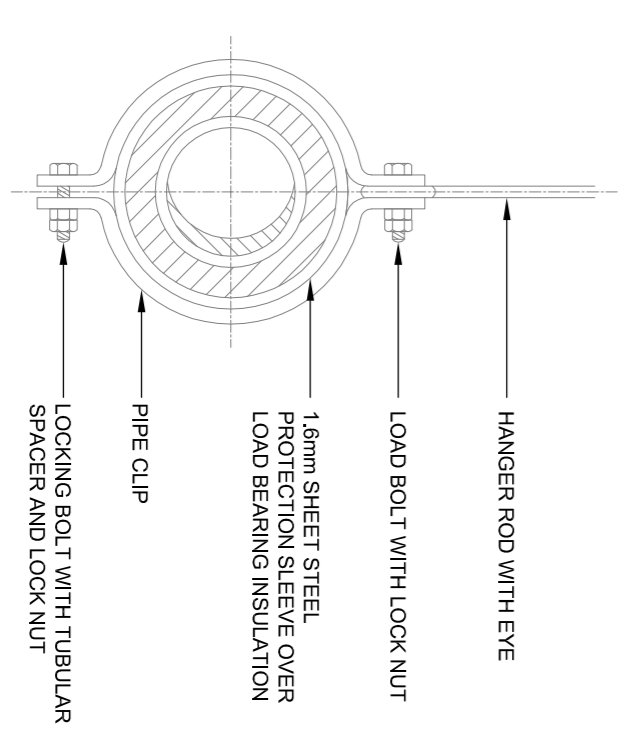
1. THIS DRAWING IS TO BE READ IN CONJUNCTION WITH ALL SPECIFICATIONS, SCHEDULES AND LAYOUT DRAWINGS.
2. ALL WORKS & COMMISSIONING TO BE CARRIED OUT IN ACCORDANCE WITH THE SPECIFICATION.
3. ALL DIMENSIONS SHOWN ARE IN MILLIMETRES (mm) UNLESS OTHERWISE NOTED.
4. DATA HALL COOLING INSTALLATION TO BE MANUFACTURED BY DENCO HAPPEL.
5. REFRIGERANT TO BE R410A.
6. CONDENSATE DRAINAGE FROM CRAIG INDOOR UNITS TO COMPRISE 20mmØ MDPVC PIPEWORK CONNECTED TO 20mmØ CRAIG INDOOR UNIT DRAIN OUTLET. DRAINAGE PIPEWORK TO BE GRADED TO FALL AT 1:50 MINIMUM.
7. CHILLED WATER PIPEWORK TO OPERATE AS A RING AROUND COIL. TO PROVIDE FREE COOLING COMPLETE WITH EG PUMP PROVIDED WITH 20% GLYCOL MIX IN LINE WITH MANUFACTURERS REQUIREMENTS.
8. INDOOR UNITS TO BE CONTROLLED VIA AIR TEMPERATURE SENSOR LOCATED IN COLD AISLE.
9. CONTRACTOR TO ALLOW FOR FULL TESTING AND COMMISSIONING OF INSTALLATION.
10. EACH CRAIG INDOOR UNIT TO BE PROVIDED WITH REMOTE SUPPLY TEMPERATURE SENSOR COMPLETE WITH 10 METRE SUPPLY TEMPERATURE SENSING CABLE. ALL SENSORS TO BE PROVIDED WITH UNIT MOUNTED RETURN AIR TEMPERATURE AND HUMIDITY SENSORS.
11. EACH SUPPLY TEMPERATURE SENSOR TO BE MOUNTED AT A HEIGHT OF 0.75 x RACK HEIGHT AND 400mm FROM THE CABINET FACE IN LINE WITH ISS DIRECTIVE FOR BT PEOPLE - PWRPOLAD01.
12. REFER TO SCHEDULE TUV-XX-XX-SH445-001 FOR DATA HALL COOLING INSTALLATION DETAILS AND SPECIFICATION.



8 x 50mmØ CHW FAR & REFRIGERANT L&G PIPEWORK DROP TO BELOW VIA EXISTING SKYLIGHT.  
CONTRACTOR TO ALLOW FOR NEW WEATHERPROOF ENTRY TO THE EXISTING SKYLIGHT NEW ARRANGEMENT TO ALLOW FOR 3 NO. SIDE ENTRY FOR INSTALLATION PIPEWORK, CABLES ETC.  
ACCESS TO RISER TO BE PROVIDED TO ALLOW FOR LIFT ACCESSIBLE FROM A REMOVABLE VAPOUR SEAL IN MAINTAINED TO BE MANUFACTURED BY PRO OR EQUIVALENT SYSTEM.

PIPEWORK TO BE SUPPORT ON HFRAME SUPPORT SYSTEM CW ADHERED FOOT PADS AS MANUFACTURED BY ROOF PRO OR APPROVED EQUIVALENT.

NEW DENCO VERTICAL BLOW HYBRID COMBINED CONDENSER DRYCOOLER (6 NO. 107KA).  
OUTDOOR UNITS TO BE SUPPORT ON A ADHERED FOOT PADS AS MANUFACTURED BY ROOF PRO OR APPROVED EQUIVALENT. TOTAL SYSTEM HEIGHT TO BE 400mm ABOVE ROOF LEVEL.



**TYPICAL DETAIL No.1**  
HANGERS FOR HORIZONTAL INSULATED COLD PIPEWORK  
Ntd To Scale