
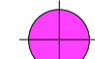






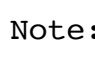




KEY

-  Pole mounted floodlights (BEGA 99 595) mounted to 6m lighting column
-  Pole mounted floodlights (BEGA 99 596) mounted to 6m lighting column
-  In-ground luminaires (BEGA 77 069)
-  In-ground luminaires (BEGA 77 089)
-  LED lightstrings (Tokistar)
-  Lighting bollards (BEGA 99 856)
-  Lighting bollards (BEGA 99 852)
-  Strip lights within bicycle store structure (Phi lighting, Stria led external)
-  Feature lights within proposed complementing school sign (iGuzzini BA53)

NOTE:

- Lighting is dimmable and timer allows for non-security lighting to be turned off overnight.
- All external lighting is controlled by a time clock and daylight sensor with a master control keypad located at main reception area.

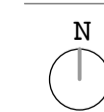
LIGHTING STRATEGY

The external lighting has been designed with careful consideration regarding the surrounding sites. The scheme aims to minimise or mitigate the impact of the lighting and lux levels to the landscape and beyond; taking into account the need to limit light spillage to adjacent sites (including the operational railway), and to avoid disturbance to nesting birds and bats.

The closest column to the Network Rail boundary exceeds 20m, while the largest collapse radius for a lighting column is 6m. Therefore, there is no risk to the Network Rail boundary wall from a collapsed lighting column. The scheme also includes low-level bollards, signage lighting, in-ground luminaires and LED light strings (max height 1.2m)

We feel that the external lighting strategy mitigates impact to the Network rail site and provides an exiting landscape.

Note: All external works should comply with Arboricultural Method Statement



JCLA

3A Iliffe Yard
LONDON SE17 3QA
Telephone
+44 (0)207 703 3270

www.jcla.co.uk

Notes

- Do not scale from drawings.
- To be read in conjunction with all relevant Architects', Services and Structural Engineers' drawings.
- All existing site, tree and building information has been compiled from different sources.
- All dimensions to be checked on site.

Revisions

- Revision C: -Noted updated
- Revision D: -Sign lighting in main entrance relocated
- Revision E: - Note to sign lighting in main entrance added
- Lighting confirmed

CONSTRUCTION ISSUE

Project	Kingsgate Liddell	Revision	E
Project No.	KL037		
Client	London Borough of Camden		
Date	31st March 2017		
Scale	1:250 @ A1		
Drawing Name.	Landscape lighting plan		
Dwg No.	KL037.G.03.LTP1		