

DO NOT SCALE

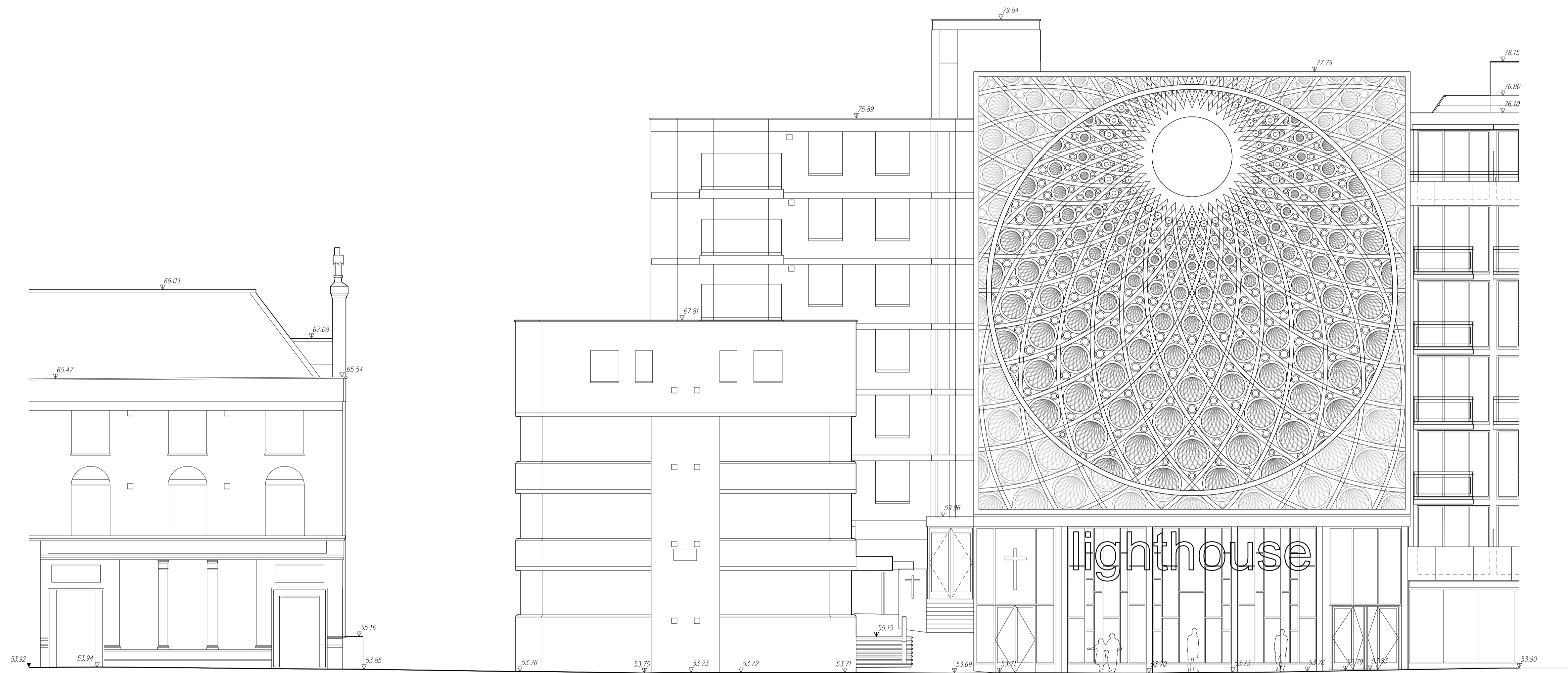
THE CONTRACTOR IS TO CHECK AND VERIFY ALL BUILDING AND SITE DIMENSIONS, LEVELS AND SEWER INVERT LEVELS AT CONNECTION POINTS BEFORE WORK STARTS.

THIS DRAWING IS TO BE READ AND CHECKED IN CONJUNCTION WITH ENGINEERS AND OTHER SPECIALIST DRAWINGS.

THE DRAWING AND THE WORKS DEPICTED ARE THE COPYRIGHT OF HAWORTH TOMPKINS LTD AND MAY NOT BE REPRODUCED EXCEPT BY WRITTEN PERMISSION.

NOTES

TO BE READ IN CONJUNCTION WITH GA PLANS, SECTIONS AND ELEVATIONS.



REV	DATE	DESCRIPTION
P9	21.03.17	PLANNING SUBMISSION
P8	12.12.16	PLANNING SUBMISSION
P7	08.11.16	STAGE 3 GA FREEZE
P6	04.11.16	DRAFT
P5	28.09.16	STAGE 3 INTERIM COORDINATION
P4	01.08.16	STAGE 2 REPORT
P3	07.07.16	STAGE 2 GA FREEZE
P2	29.06.16	STAGE 2 INTERIM COORDINATION
P1	27.05.16	FOR INFORMATION

33 Greenwood Place
London NW5 1LB
T +44 (0)20 7250 3225
W www.haworthtompkins.com



JOB 1326: HOLY TRINITY
DRG PROPOSED FINCHLEY ROAD ELEVATION

DRG No 1326-HT-E-001 **REV** P9

SCALE 1:100@A1, 1:200@A3 **DATE** 27.05.16

DRAWN BY AL **INSPECTED BY** JS

DRAWING STATUS PLANNING