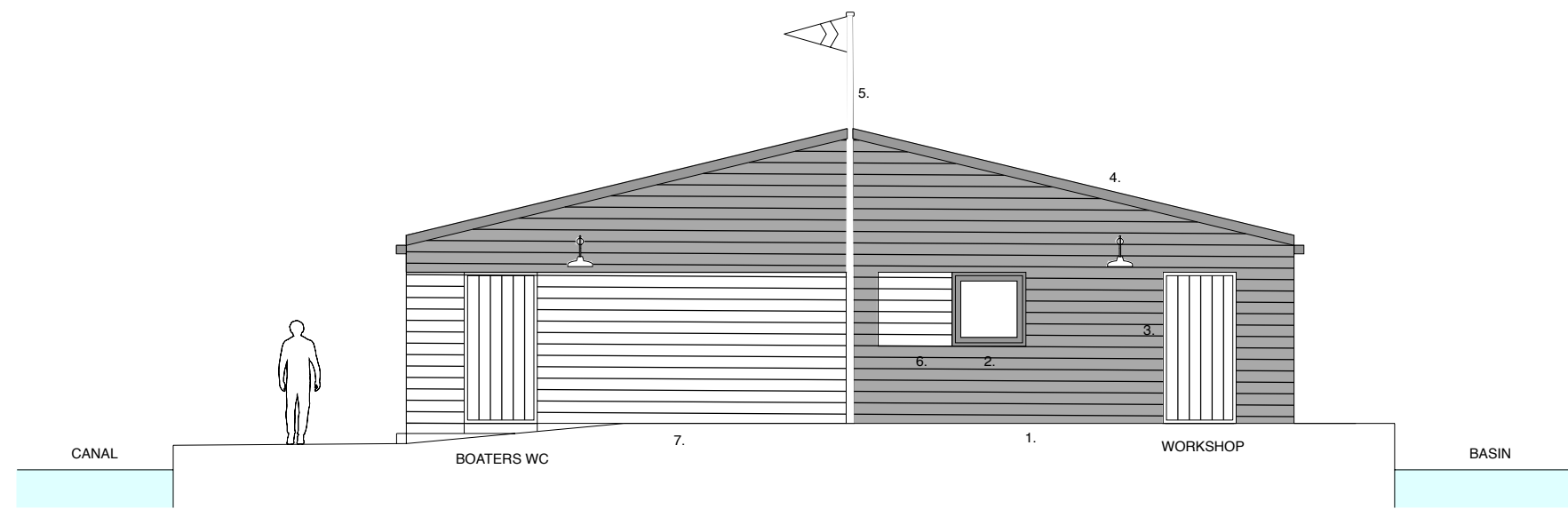
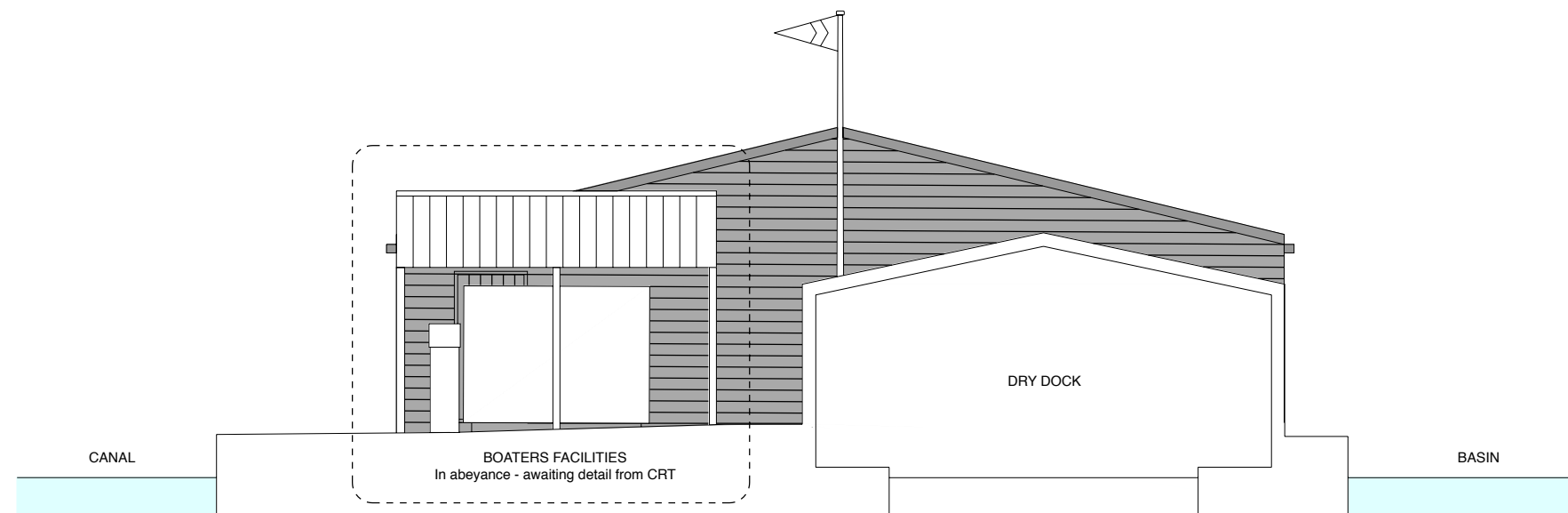


SECTION CC THROUGH CLUBHOUSE



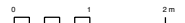
NORTH-WEST ELEVATION TO CLUBHOUSE (SECTION DD)



SECTIONAL ELEVATION EE THROUGH VISITING BOATERS FACILITIES

KEY TO MATERIALS

1. Timber cladding, stained black
2. Metal frame windows, grey
3. Vertical timber cladding on doors, painted white
4. Profiled roof panels, grey
5. Flag pole, painted white
6. Shutter
7. Timber cladding, painted white
8. Roof light



NOTES  
Do not scale from this drawing. All dimensions to be confirmed on site. SPCC to be informed of any discrepancies before any action is taken.

St Pancras Cruising Club

St Pancras Yacht Basin  
Camley St, London N1C 4PN

DRAWING  
Proposed Elevations & Sections

SCALE  
1:50 @ A1, 1:100 @ A3

STATUS  
Amended planning application

DRAWING No. / REVISION  
02 102 / P2

St Pancras Cruising Club  
New clubhouse & Boater facilities

REV DATE