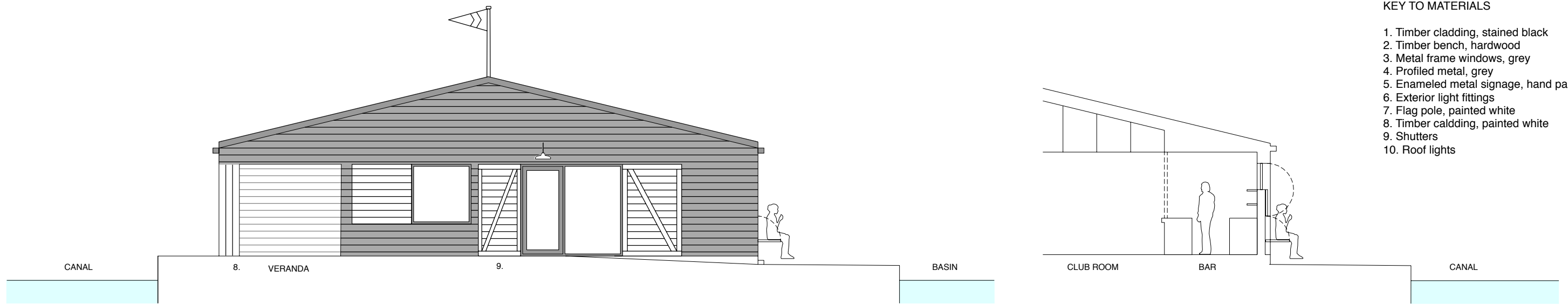


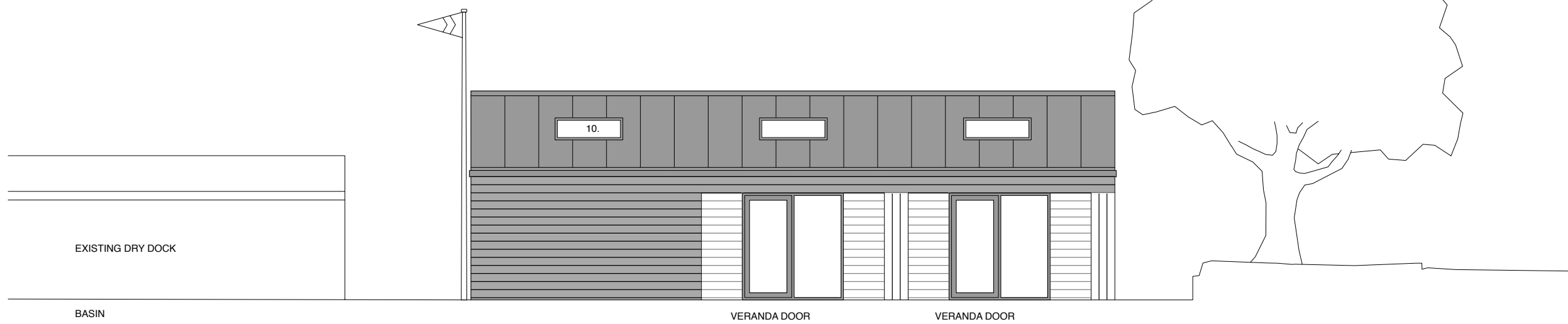
NORTH-EAST ELEVATION TO CANAL



SOUTH-EAST ELEVATION OF CLUBHOUSE (SECTION AA)

PART SECTION BB THROUGH CLUB BAR

- KEY TO MATERIALS
1. Timber cladding, stained black
 2. Timber bench, hardwood
 3. Metal frame windows, grey
 4. Profiled metal, grey
 5. Enameled metal signage, hand painted
 6. Exterior light fittings
 7. Flag pole, painted white
 8. Timber cladding, painted white
 9. Shutters
 10. Roof lights



NOTES
Do not scale from this drawing. All dimensions to be confirmed on site. SPCC to be informed of any discrepancies before any action is taken.

St Pancras Cruising Club
St Pancras Yacht Basin
Camley St, London N1C 4PN

DRAWING
Proposed Elevations & Sections

SCALE
1:50 @ A1, 1:100 @ A3

STATUS
Amended planning application

DRAWING No. / REVISION
02 101 / P2

St Pancras Cruising Club
New clubhouse & Boater facilities

REV DATE