

2014

790

170 110 170

900

113

glass vision panels
EI 30

new steel framed 30 minute rated
plasterboard partition taped and skimmed
/ painted + plasterboard lining to
underside of stair

existing handrail, newlin and balustrade to
be removed

All framing
dimensions approximate

door knob and latch
with no deadlock

New painted solid timber
F30 S Fire Door
self closing and held open on
magnetic holding device,
linked to existing fire alarm
system

100mm solid timber
planted skirting board

110 200 80 200 110

450

magnetic hold open on
reverse side

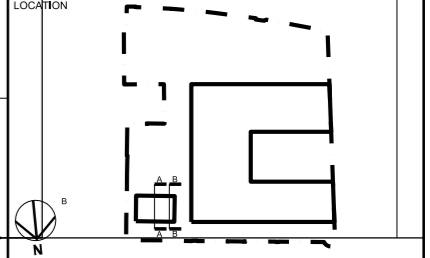
700

2318 approx.

02	31/03/17	for construction
01	29/03/17	Submission for Listed Building consent

NOTE

- Do not scale from this drawing, other than for Planning purposes.
- All dimensions to be checked on site by the contractor and such dimensions to be his responsibility.
- Report all drawing errors, omissions and discrepancies to the architect.
- This document may be issued in an uncontrolled CAD format to enable others to use it as background information to make alterations and/or additions. In that instance the file will be accompanied by a PDF version. It is for those making such alterations and additions to ensure that they make use of current background information. AHMM Ltd accepts no liability for any such alterations or additions to the background information or arising out of changes to background information which occur prior to alterations or additions being made.



ALLFORD HALL MONAGHAN MORRIS					
ARCHITECTS Ltd MORELANDS, 5-23 OLD STREET LONDON EC1V 9HL TEL 020 7251 5261 FAX 020 7251 5123 WEB WWW.AHMM.CO.UK					
job title HAWLEY PRIMARY SCHOOL					
drawing title / location 1 HAWLEY ROAD - Detail elevation upper ground floor access to stairs					
drawn by	checked	scale	status		
HC	DM	1:10 @A3			
project	zone	source	classification	drawing no.	revision
12160	x	P	[SK]	1150 F	02

01

DOOR ELEVATION: GENERAL ARRANGEMENT