

## Report in support of mechanical ventilation removal to Galleries 43 and 45



**View of ductwork serving Galleries 43-45**



**After removal of ductwork**



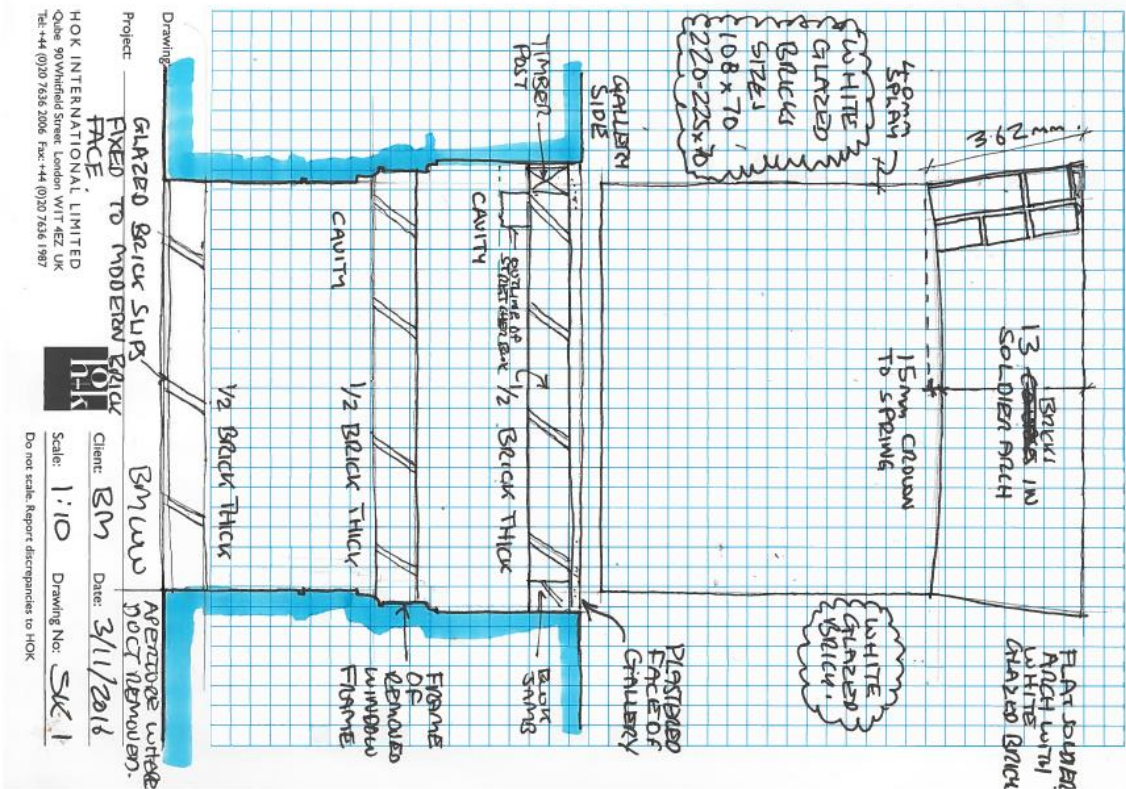
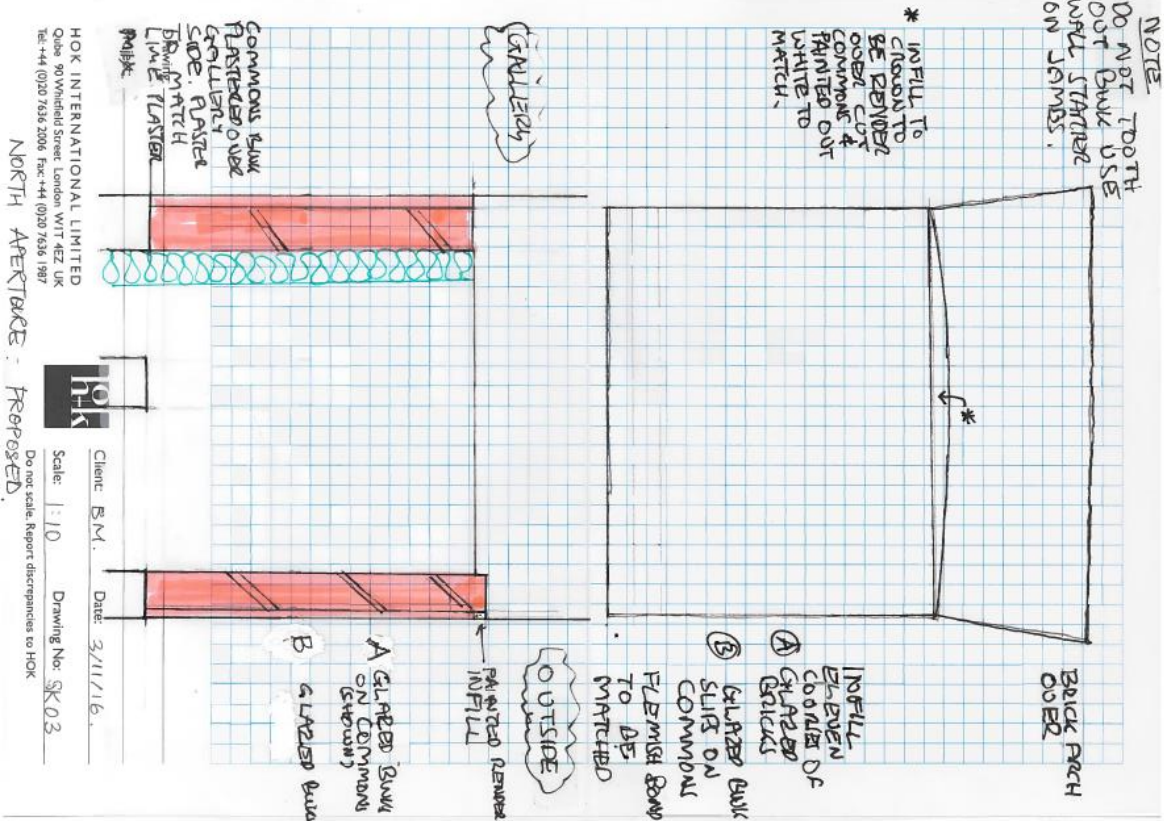
**Ibstock London White glazed bricks selected as a close match**



**View from inside gallery after duct removed**

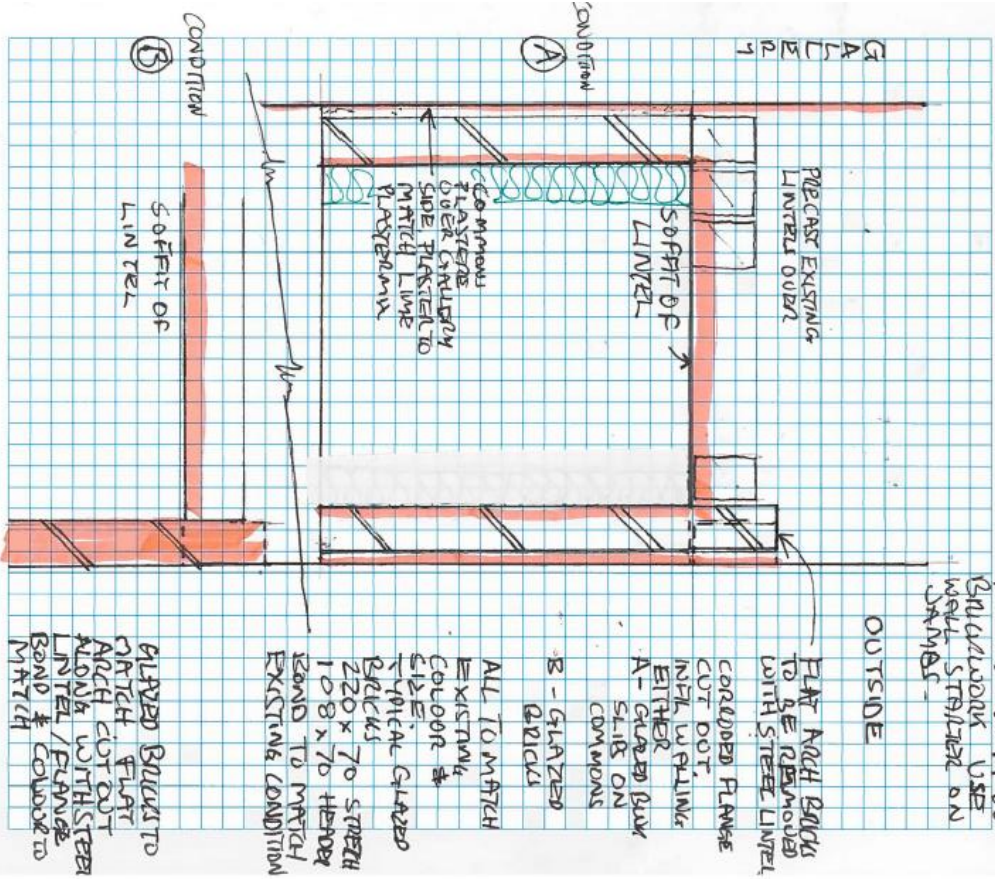


**The completed glazed brick works**

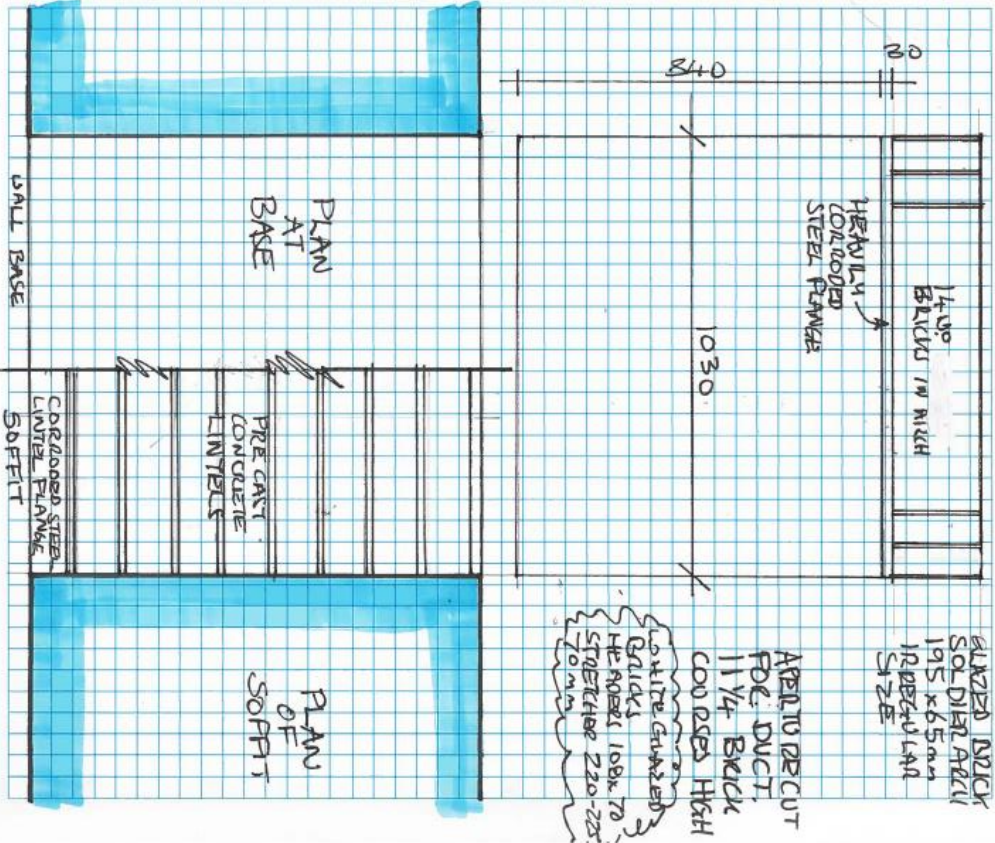


Detail at north end of lightwell – existing condition and works carried out

Drawing: GALLERY 42-45: WHERE DUCT REMOVED  
 Project: BRITISH MUSEUM SOUTH APERITURE



Drawing: BRITISH MUSEUM: APERITURE WHERE DUCT REMOVED  
 Project: 42-45 GALLERY SOUTH APERITURE



Detail at south end of lightwell – existing condition and works carried out