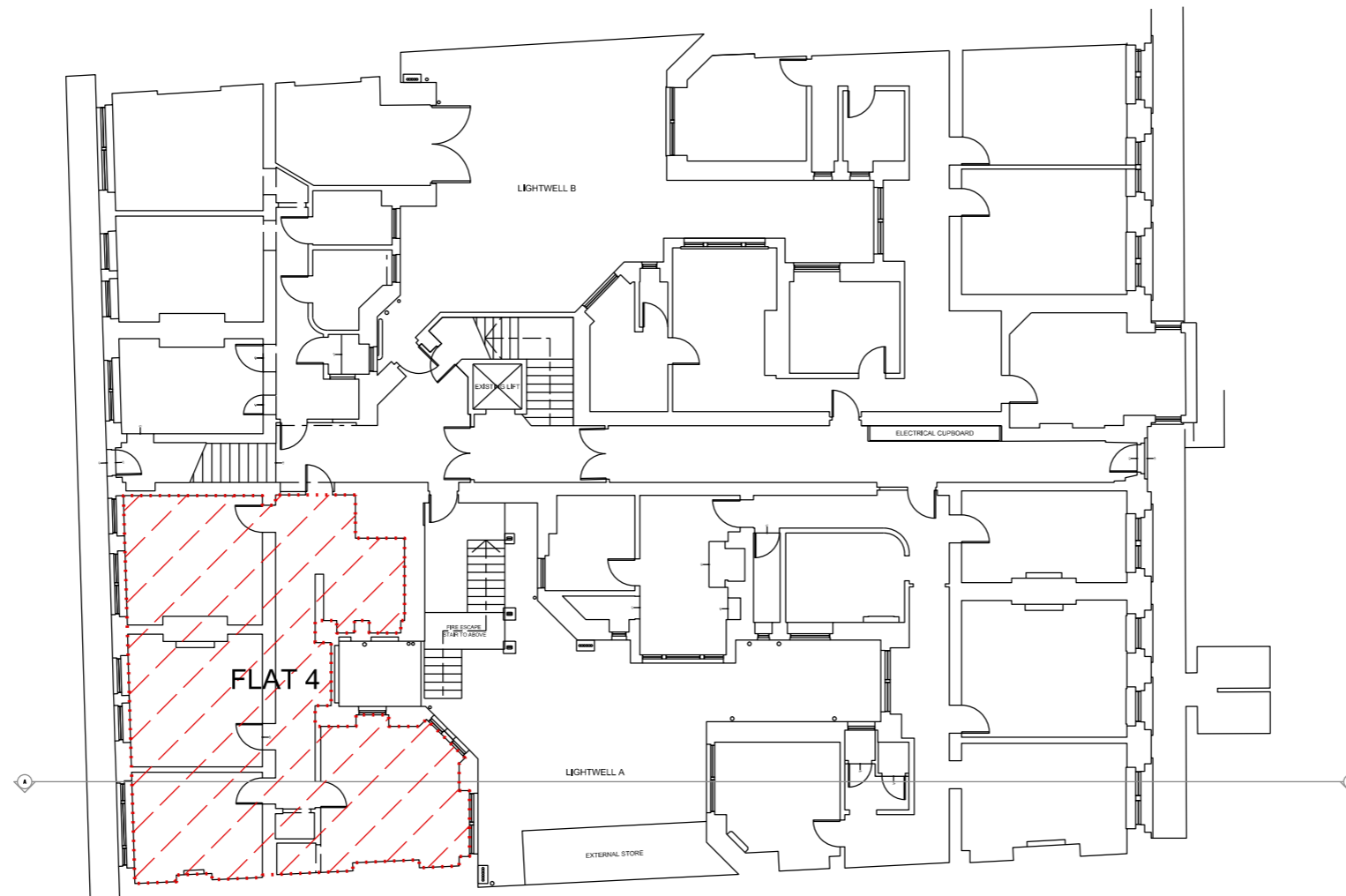


Do not scale from this drawing
All dimensions to be checked on site

Notes:

EXISTING BASEMENT FLOOR PLAN

FLAT 4: 92.2m²



Amendments:

REV B, 2017-03-29: ANNOTATION REVISED
REV A, 2017-03-22: TITLE REVISED TO 'FLAT 4'
REV #, 2015-11-11.

Drawing type:
FEASIBILITY

Client:
L. B. CAMDEN

Project:
GREAT RUSSELL MANSIONS

Title:
EXISTING BASEMENT LOCATION PLAN - FLAT 4

Scale: 1:200@A3 Date: 11/11/2015

Drawn: JMArchitects Checked: SB

Drg.no: 5922-E(1)001

Rev: B

Heritage Surveys Ltd.

Heritage Surveys Limited
20 Hanover Square
London
W1S 1JY
www.heritage-surveys.com