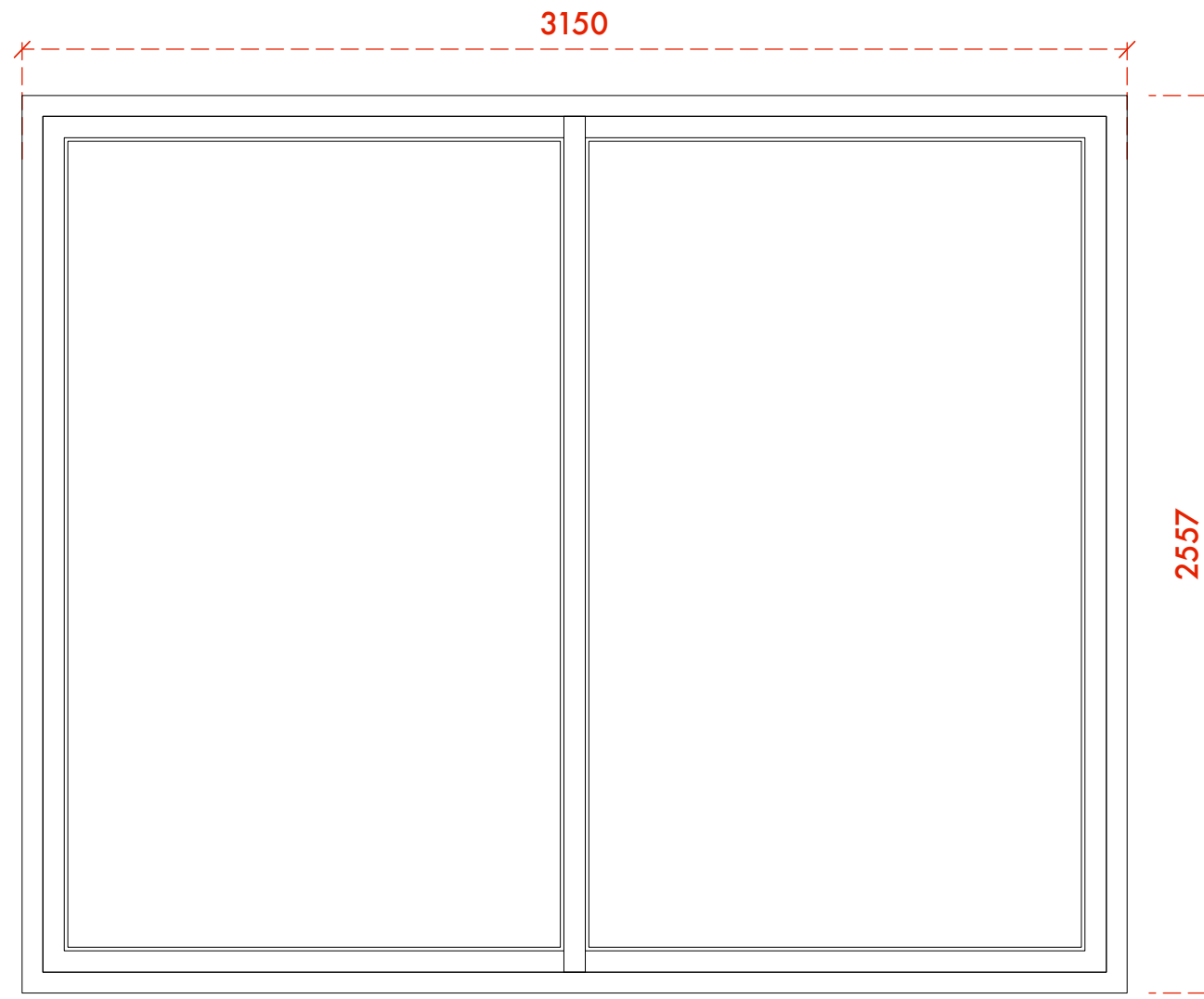


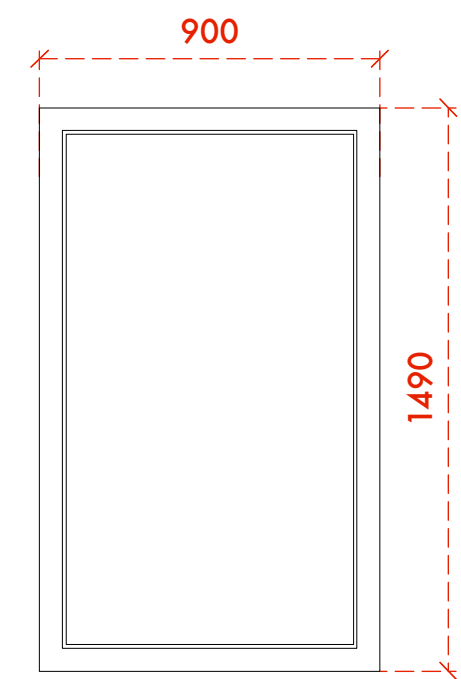
W4, W6, W7, W11

FULL HEIGHT FIXED LIGHT
CLEAR GLAZED
ALUMINIUM FACED FRAME IN RAL COLOUR
TO MATCH ZINC AND FRONT DOOR



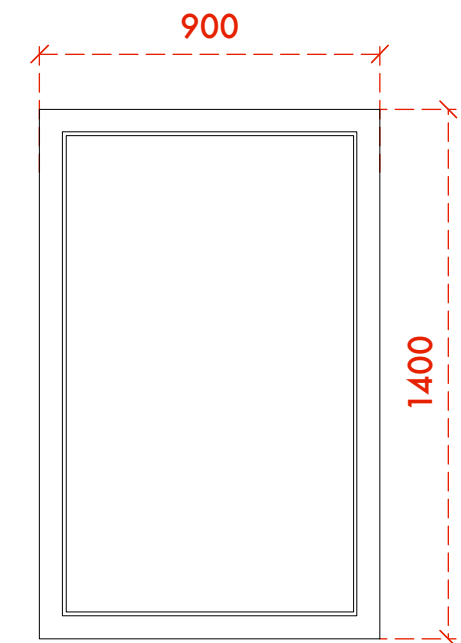
W5

FULL HEIGHT SLIDING DOORS
CLEAR GLAZED
ALUMINIUM FACED FRAME IN RAL COLOUR
TO MATCH ZINC AND FRONT DOOR



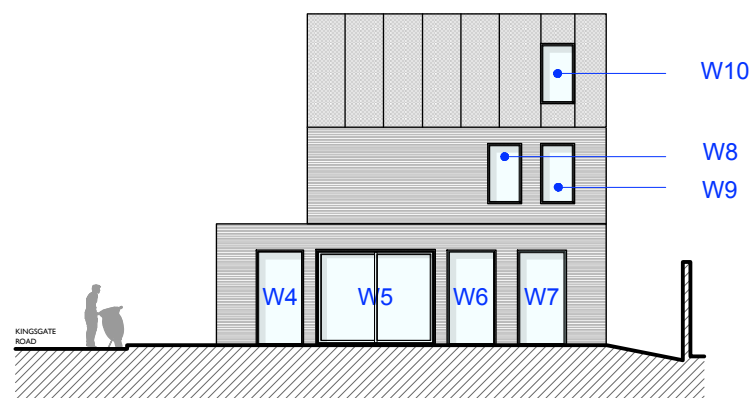
W8, W9

FIXED LIGHT
OPAQUE GLAZED
ALUMINIUM FACED FRAME IN RAL COLOUR
TO MATCH ZINC AND FRONT DOOR



W10

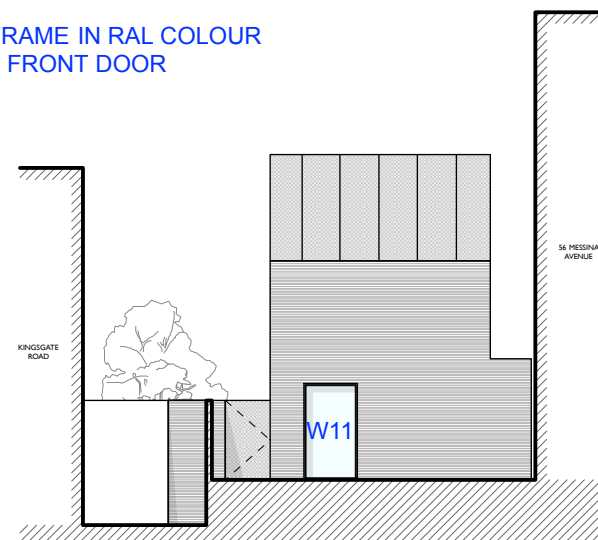
FIXED LIGHT
OPAQUE GLAZED
ALUMINIUM FACED FRAME IN RAL COLOUR
TO MATCH ZINC AND FRONT DOOR



Side elevation to show fenestration

Scale 1:200 @ A3

PIERS WERE REQUIRED EITHER SIDE OF W5
FOR STRUCTURAL REASONS



Rear elevation to show fenestration

Scale 1:200 @ A3

DO NOT SCALE THIS DRAWING WRITTEN DIMENSIONS ONLY TO BE USED ALL DIMENSIONS ARE IN MILLIMETRES ALL DIMENSIONS TO BE VERIFIED ON SITE ANY INCONSISTENCIES TO BE REPORTED TO THE ARCHITECT IMMEDIATELY	Job No 7155	p-ad 192D Compton Hill Road, Notting Hill Gate, London, W8 7TH t: 0208-459072 e: enq@p-ad.co.uk	p-ad
	FOR CONSTRUCTION		
	87-93 Kingsgate Road, London, NW6 4LA	Tide Drawn by SG	Number 1:20 & 1:200 @ A3 7155/ 2.7