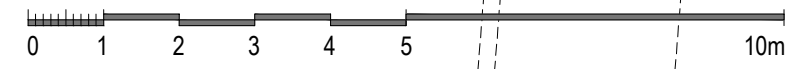


Demolition Basement Floor Plan



Issued For **PLANNING**

General Notes:  
THIS DRAWING HAS BEEN PREPARED BY DS DESIGN SOLUTIONS AND THE DATA CONTAINED HEREIN MAY BE USED OR REPRODUCED ONLY WITH DS DESIGN SOLUTIONS' APPROVAL.

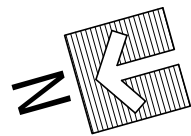
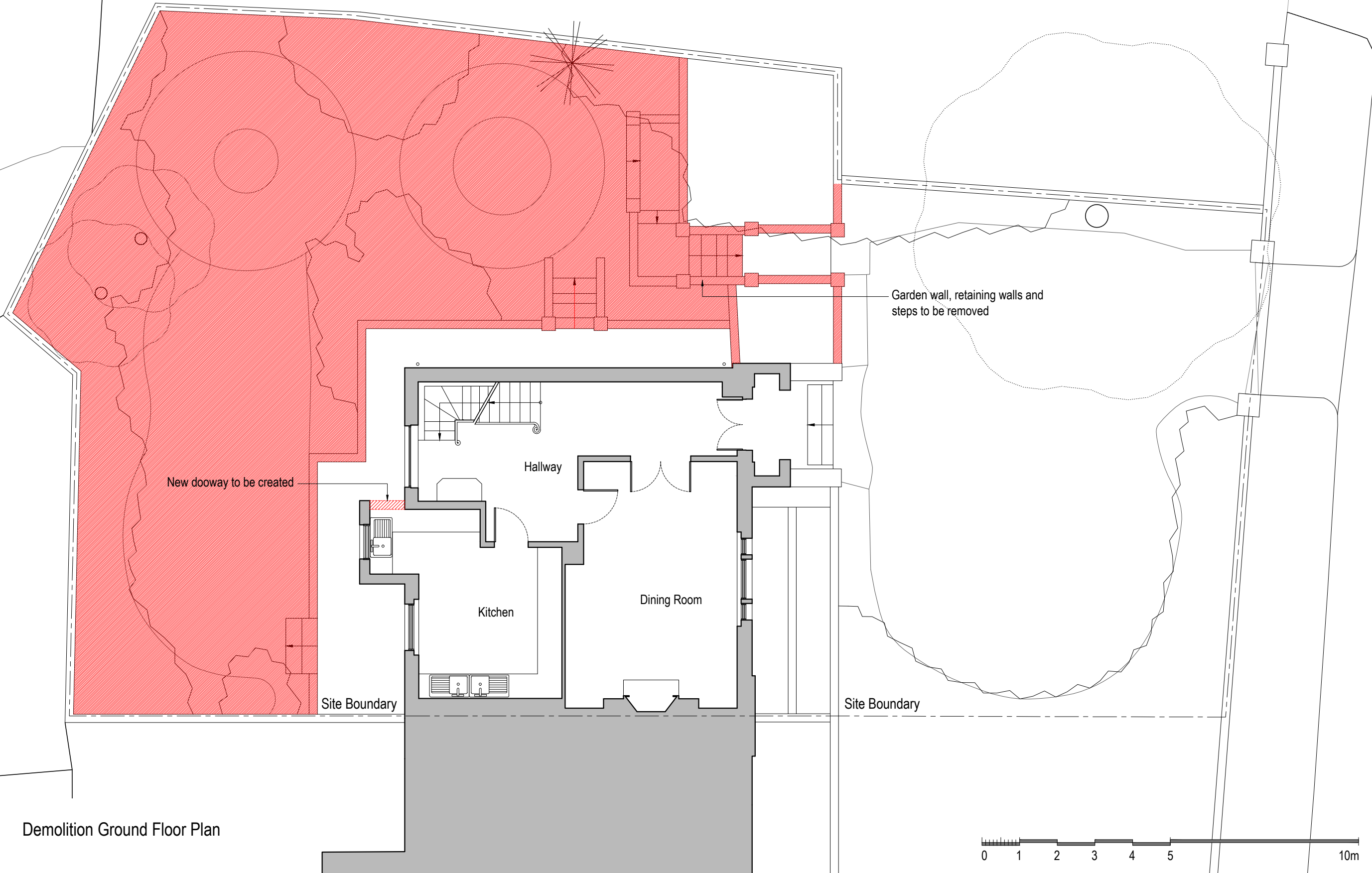
Rev.	Description	Date	Signed	Checked

--	--

Scale 1:100 @ A3 1:50 @ A1
-------------------------------

Scale	Date	Drawn by	Checked by
1:100 @ A3	20.04.2016	AL	DS
Drawing Title <b>Demolition Plan Basement Floor Plan</b>			
Project 8 Prince Albert Road London NW1 7SR			

	561 Finchley Road London NW3 7BJ Phone 020 7433 3939 Fax 020 7794 4279 www.DesignSolutionsUK.com		
	Project no. 14/0313	Drawing no. 201	Revision P01



Demolition Ground Floor Plan

Issued For  
**PLANNING**


General Notes:  
THIS DRAWING HAS BEEN PREPARED BY DS DESIGN SOLUTIONS AND THE DATA CONTAINED HEREIN MAY BE USED OR REPRODUCED ONLY WITH DS DESIGN SOLUTIONS' APPROVAL.

Rev.	Description	Date	Signed	Checked

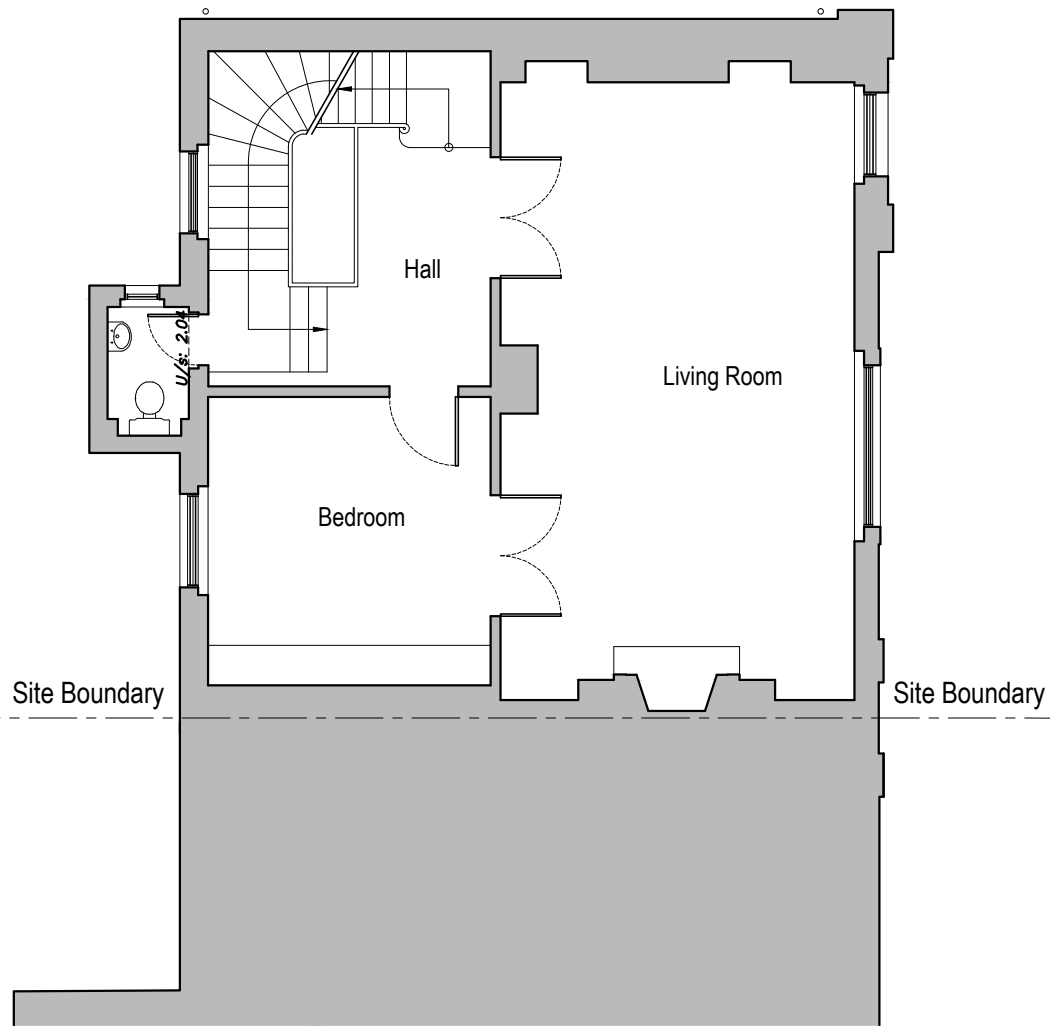
--	--

Scale 1:100 @ A3 1:50 @ A1
-------------------------------

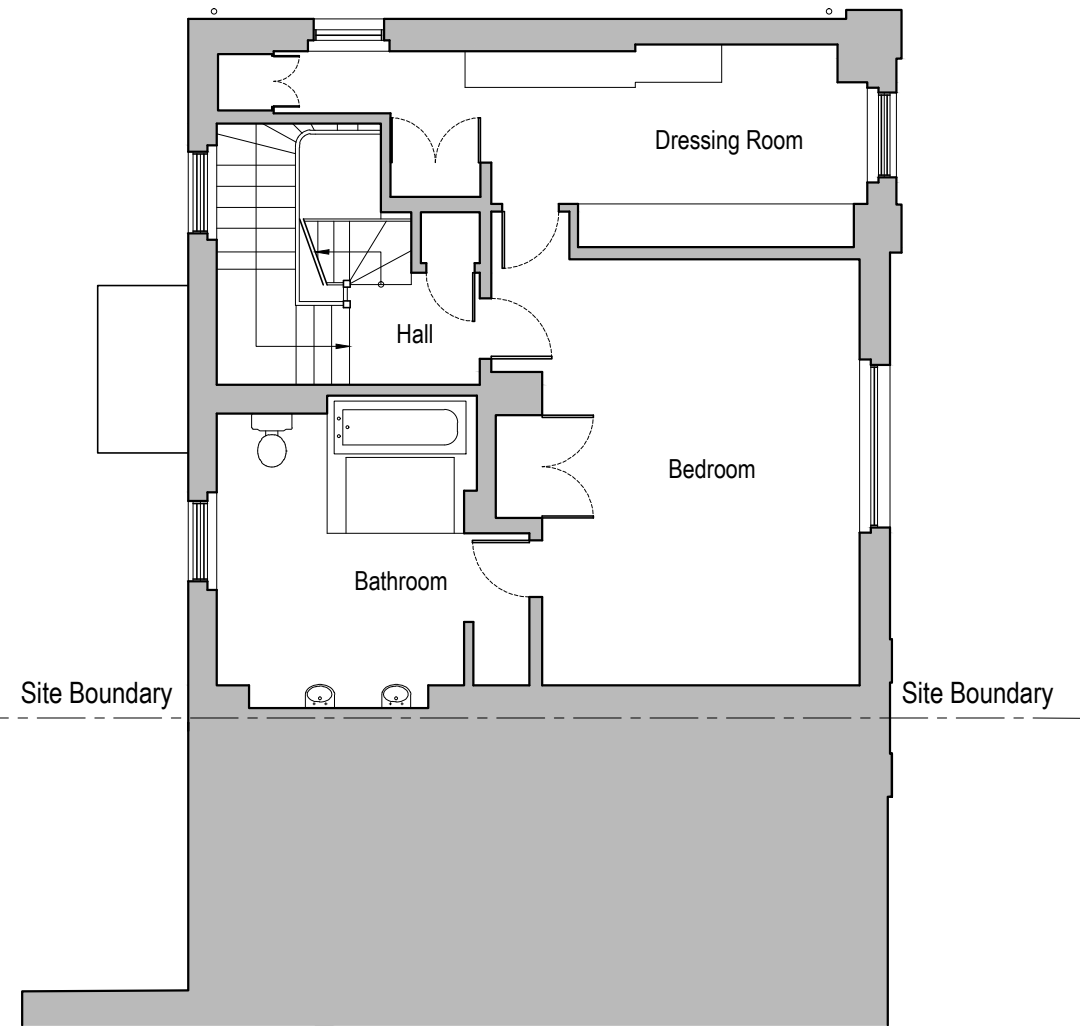
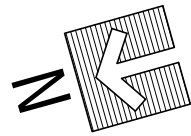
Scale 1:100 @ A3	Date 20.04.2016	Drawn by AL	Checked by DS
Drawing Title <b>Demolition Plan Ground Floor Plan</b>			
Project 8 Prince Albert Road London NW1 7SR			

 design solutions www.DesignSolutionsUK.com	561 Finchley Road London NW3 7BJ Phone 020 7433 3939 Fax 020 7794 4279	
	Project no. 14/0313	Drawing no. 202

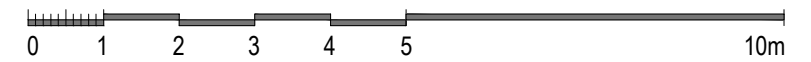
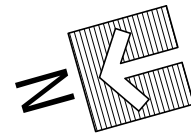
[SECOND FLOOR TO REMAIN AS EXISTING]



Demolition First Floor Plan



Demolition Second Floor Plan



Issued For  
**PLANNING**

General Notes:  
THIS DRAWING HAS BEEN PREPARED BY DS DESIGN SOLUTIONS AND THE DATA CONTAINED HEREIN MAY BE USED OR REPRODUCED ONLY WITH DS DESIGN SOLUTIONS' APPROVAL.

Rev.	Description	Date	Signed	Checked

Scale 1:100 @ A3  
1:50 @ A1

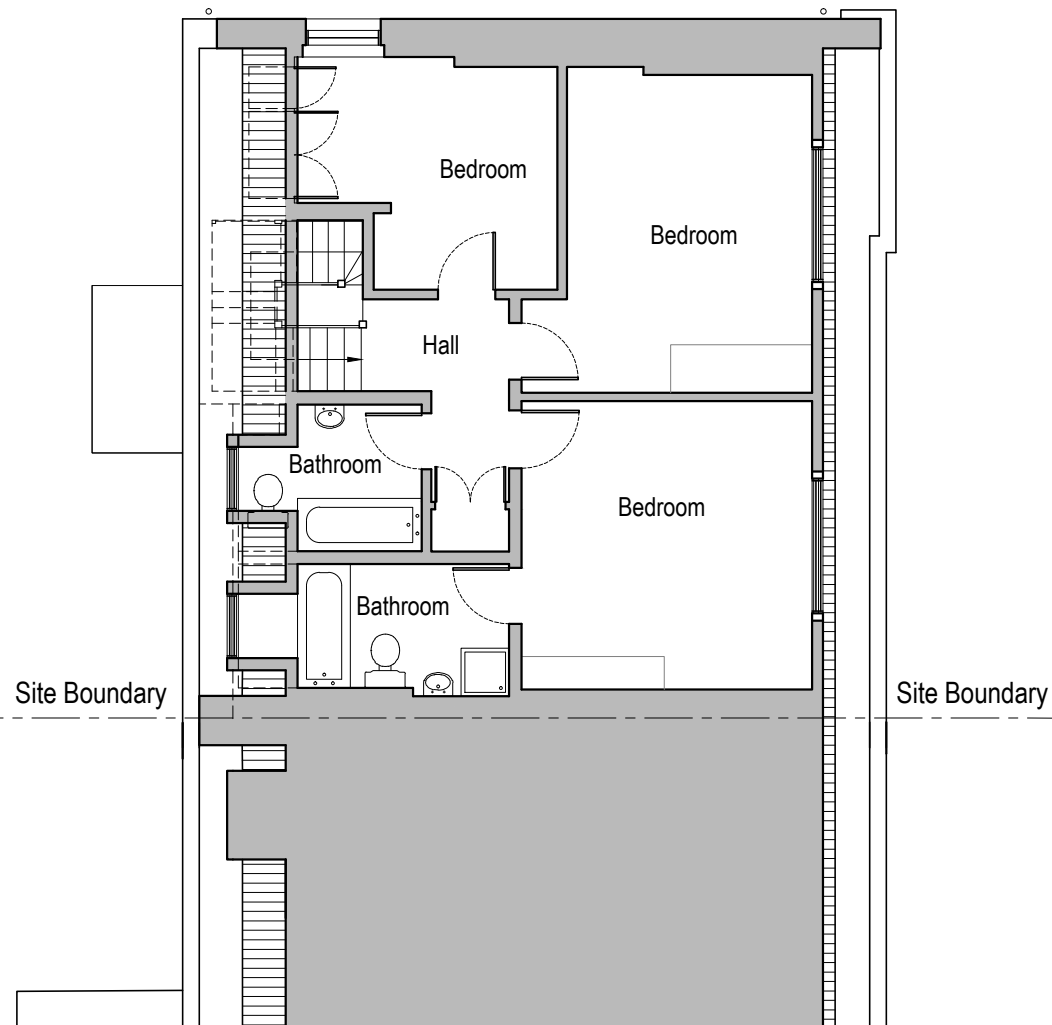
Scale	Date	Drawn by	Checked by
1:100 @ A3	20.04.2016	AL	DS
Drawing Title <b>Demolition Plan - First Floor Plan - Second Floor Plan</b>			
Project <b>8 Prince Albert Road London NW1 7SR</b>			

**DS**  
design solutions  
561 Finchley Road  
London NW3 7BJ  
Phone 020 7433 3939  
Fax 020 7794 4279  
www.DesignSolutionsUK.com

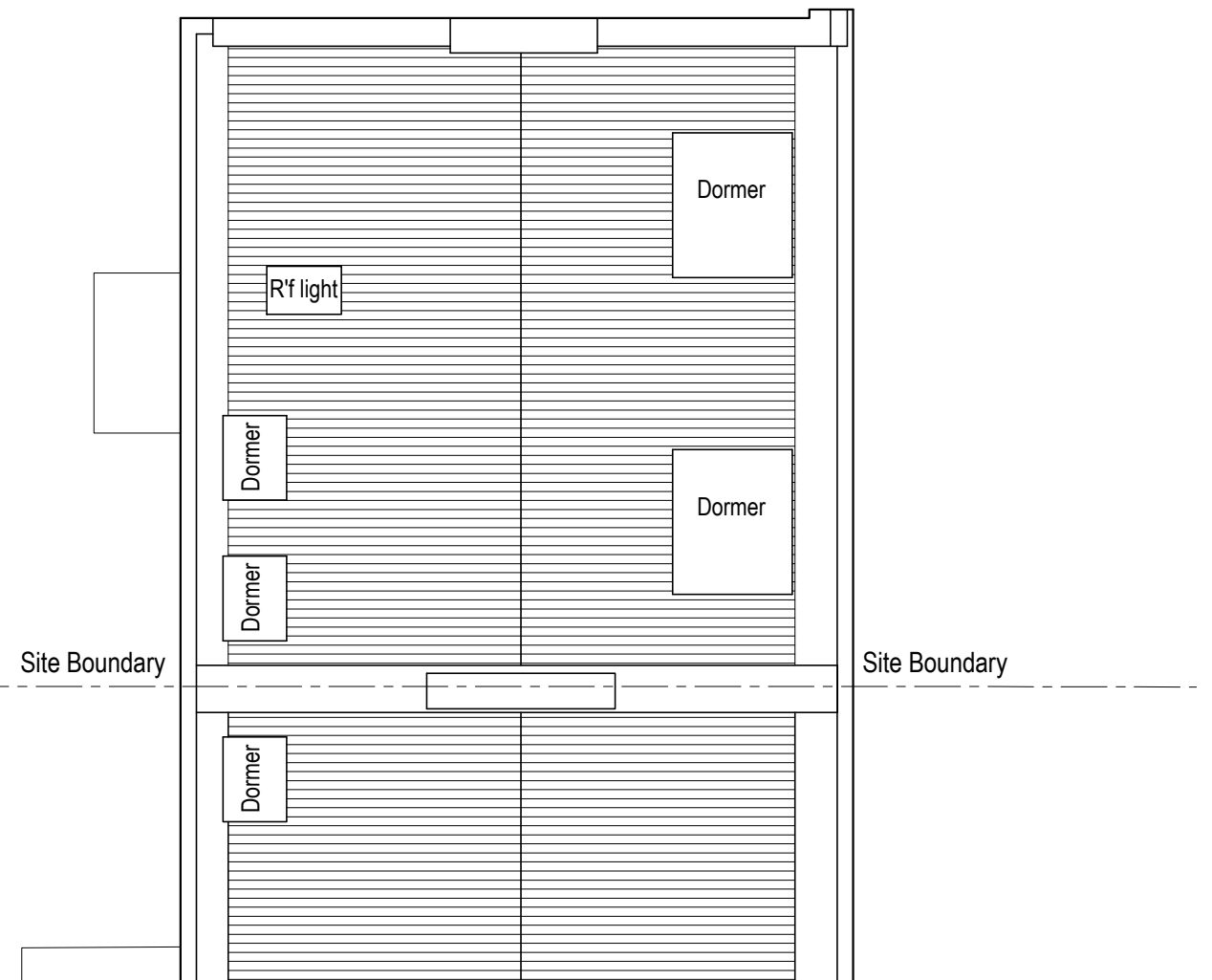
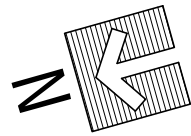
Project no.	Drawing no.	Revision
14/0313	203	P02

[THIRD FLOOR TO REMAIN AS EXISTING]

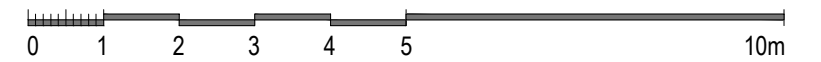
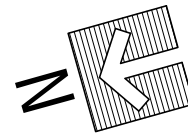
[ROOF TO REMAIN AS EXISTING]



Demolition Third Floor Plan



Demolition Roof Plan



Issued For <b>PLANNING</b>
General Notes: THIS DRAWING HAS BEEN PREPARED BY DS DESIGN SOLUTIONS AND THE DATA CONTAINED HEREIN MAY BE USED OR REPRODUCED ONLY WITH DS DESIGN SOLUTIONS' APPROVAL.

Rev.	Description	Date	Signed	Checked

--

Scale 1:100 @ A3 1:50 @ A1
-------------------------------

Scale 1:100 @ A3	Date 20.04.2016	Drawn by AL	Checked by DS
Drawing Title <b>Demolition Plan - Third Floor Plan - Roof Plan</b>			
Project 8 Prince Albert Road London NW1 7SR			

 561 Finchley Road London NW3 7BJ Phone 020 7433 3939 Fax 020 7794 4279 www.DesignSolutionsUK.com		
Project no. 14/0313	Drawing no. 204	Revision P01

9 Prince Albert Road

8 Prince Albert Road

7 Prince Albert Road

Site Boundary

Site Boundary



Third Floor

Second Floor

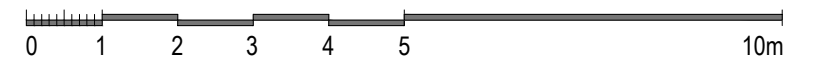
First Floor

Garden walls to be removed

Ground Floor

Lower Ground Floor

Demolition Front Elevation



Issued For  
**PLANNING**

General Notes:  
THIS DRAWING HAS BEEN PREPARED BY DS DESIGN SOLUTIONS AND THE DATA CONTAINED HEREIN MAY BE USED OR REPRODUCED ONLY WITH DS DESIGN SOLUTIONS' APPROVAL.

Rev.	Description	Date	Signed	Checked

--

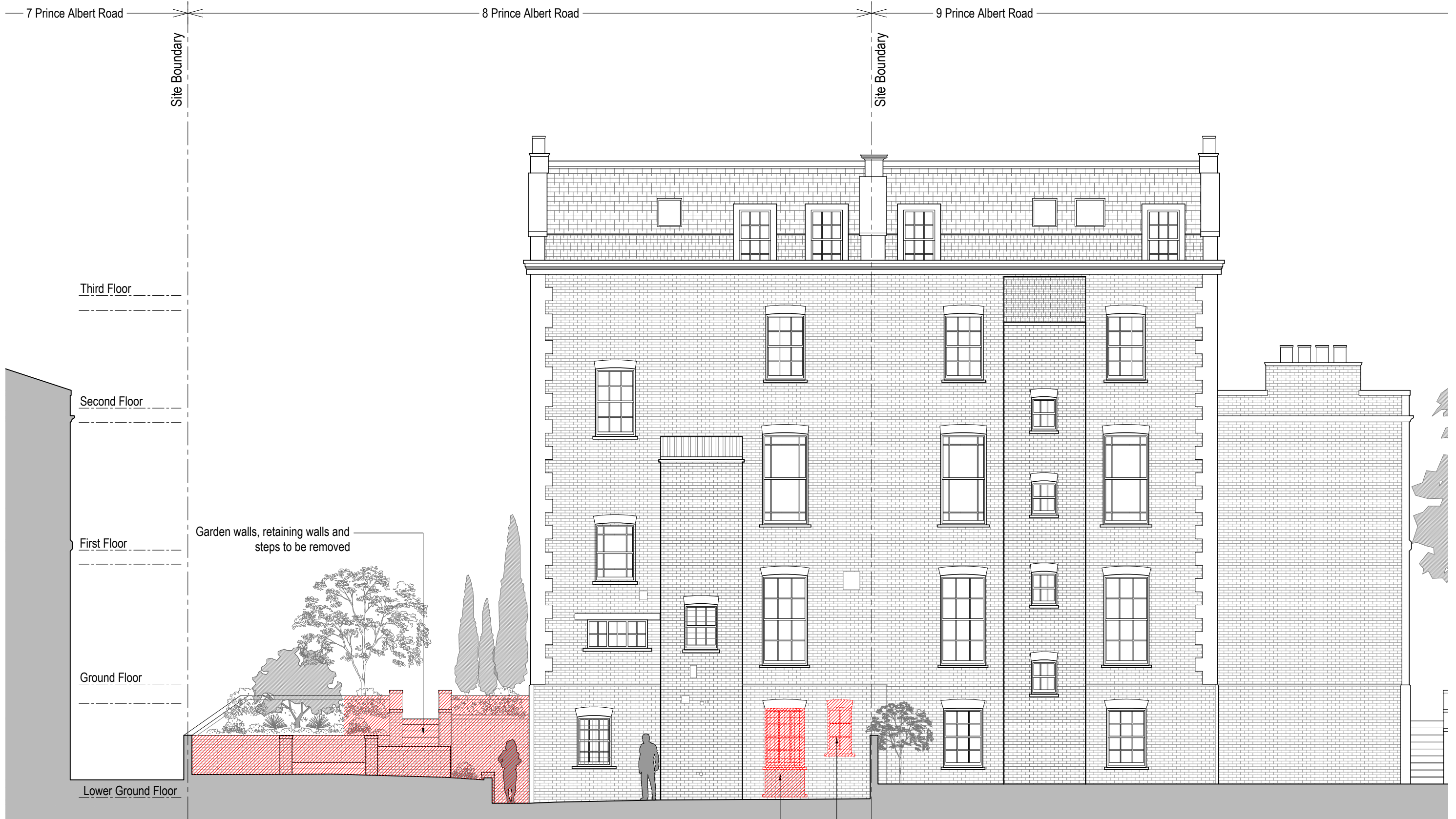
Scale 1:100 @ A3 1:50 @ A1
-------------------------------

Scale 1:100 @ A3	Date 20.04.2016	Drawn by AL	Checked by DS
Drawing Title <b>Demolition Elevation Front Elevation</b>			
Project 8 Prince Albert Road London NW1 7SR			



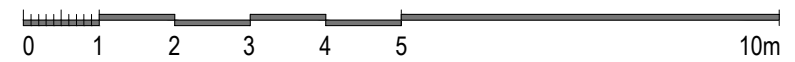
561 Finchley Road  
London NW3 7BJ  
Phone 020 7433 3939  
Fax 020 7794 4279  
www.DesignSolutionsUK.com

Project no. 14/0313	Drawing no. 221	Revision P01
------------------------	--------------------	-----------------



Existing window to be removed and blocked up to match existing brickwork (including arch)  
 Existing window and brickwork below to be removed

Demolition Rear Elevation



Issued For  
**PLANNING**

General Notes:  
 THIS DRAWING HAS BEEN PREPARED BY DS DESIGN SOLUTIONS AND THE DATA CONTAINED HEREIN MAY BE USED OR REPRODUCED ONLY WITH DS DESIGN SOLUTIONS' APPROVAL.

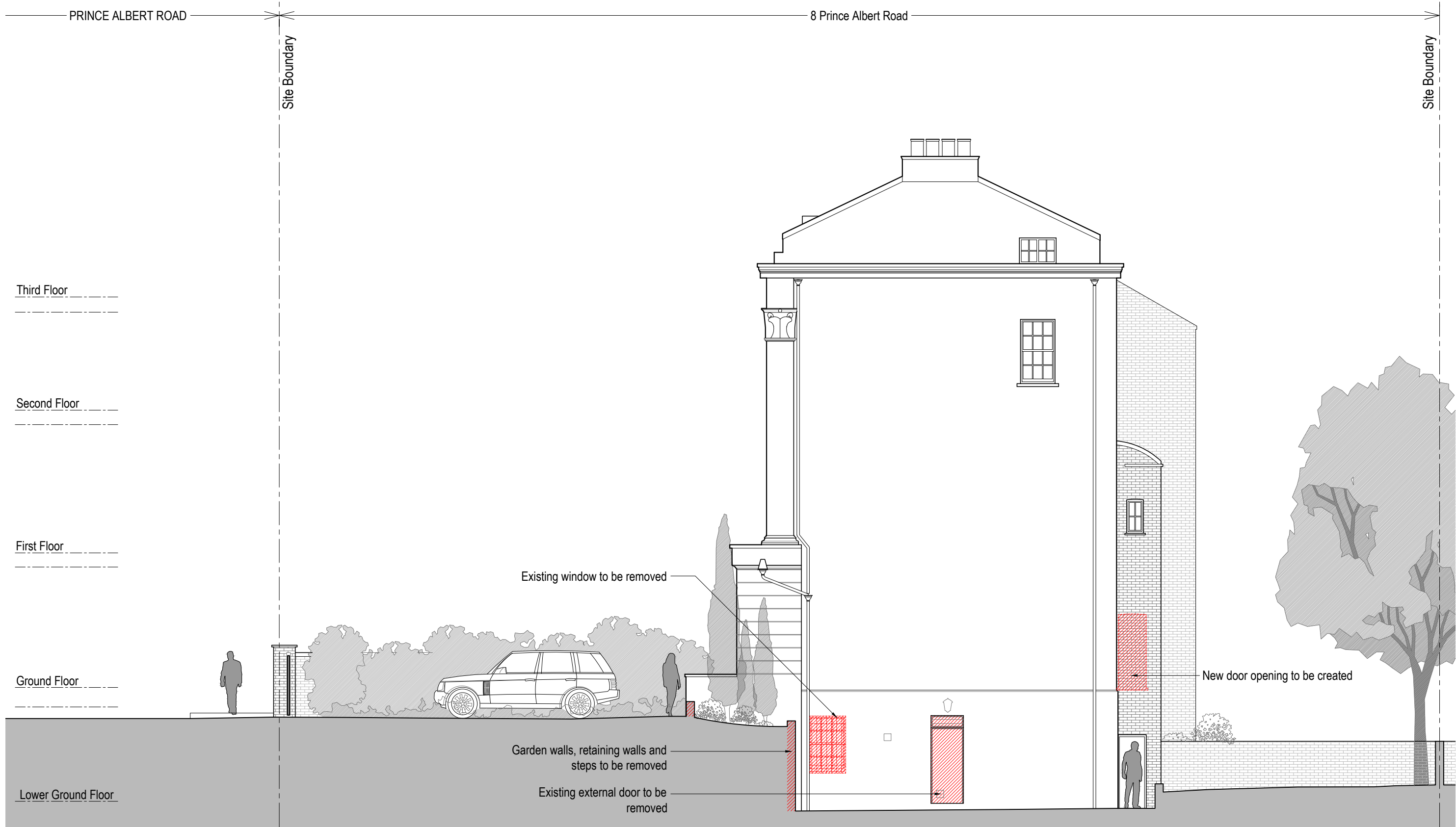
Rev.	Description	Date	Signed	Checked

--	--

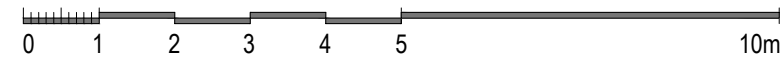
Scale 1:100 @ A3  
 1:50 @ A1

Scale	Date	Drawn by	Checked by
1:100 @ A3	20.04.2016	AL	DS
Drawing Title			
Demolition Elevation Rear Elevations			
Project			
8 Prince Albert Road London NW1 7SR			

	561 Finchley Road London NW3 7BJ Phone 020 7433 3939 Fax 020 7794 4279 www.DesignSolutionsUK.com		
	Project no.	Drawing no.	Revision
14/0313	222	P01	



Demolition Side Elevation



Issued For  
**PLANNING**


General Notes:  
THIS DRAWING HAS BEEN PREPARED BY DS DESIGN SOLUTIONS AND THE DATA CONTAINED HEREIN MAY BE USED OR REPRODUCED ONLY WITH DS DESIGN SOLUTIONS' APPROVAL.

Rev.	Description	Date	Signed	Checked

Rev.	Description	Date	Signed	Checked

Scale 1:100 @ A3 1:50 @ A1
-------------------------------

Scale 1:100 @ A3	Date 20.04.2016	Drawn by AL	Checked by DS
Drawing Title Demolition Elevation Side Elevations			
Project 8 Prince Albert Road London NW1 7SR			

 561 Finchley Road London NW3 7BJ Phone 020 7433 3939 Fax 020 7794 4279 www.DesignSolutionsUK.com		
Project no. 14/0313	Drawing no. 223	Revision P02