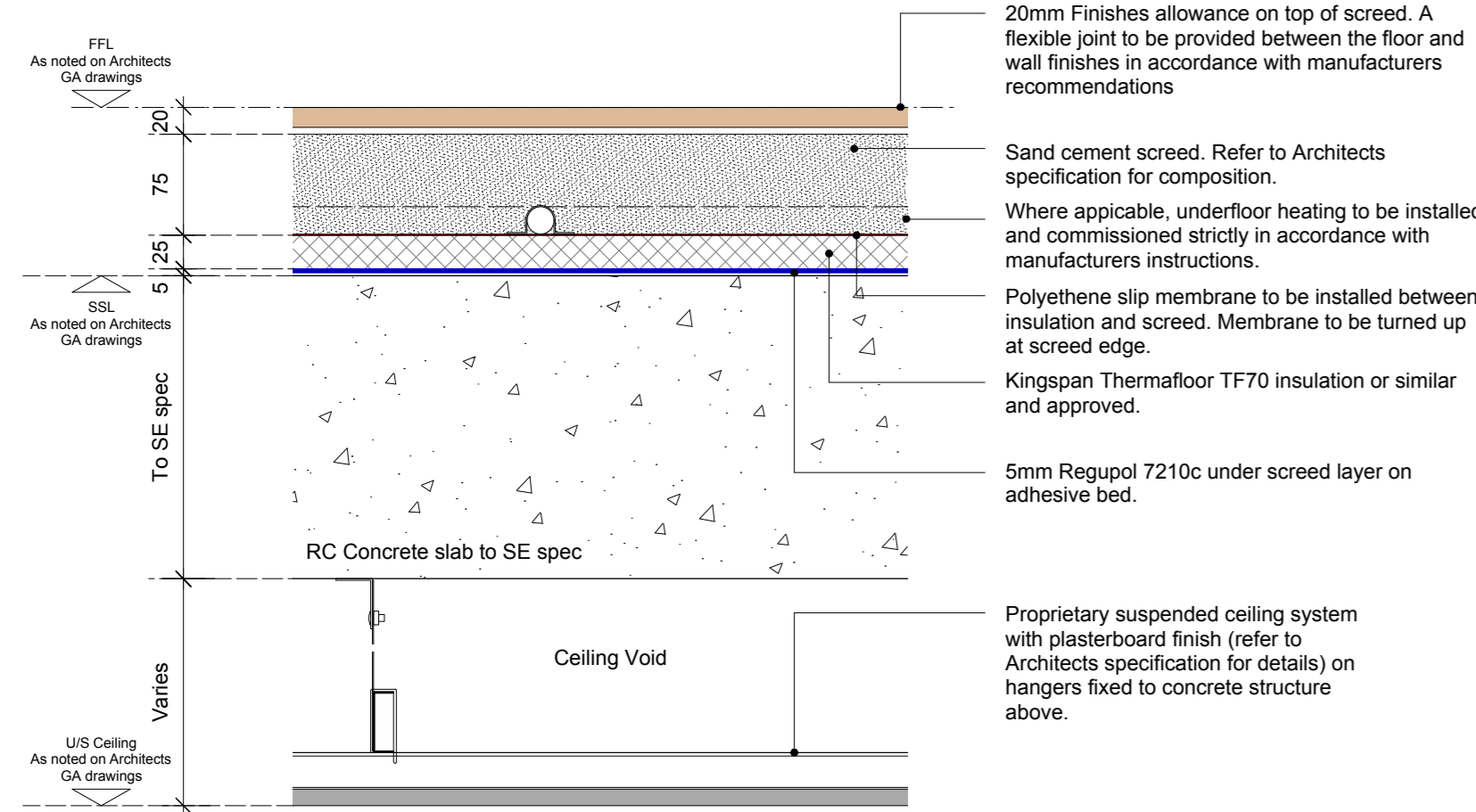
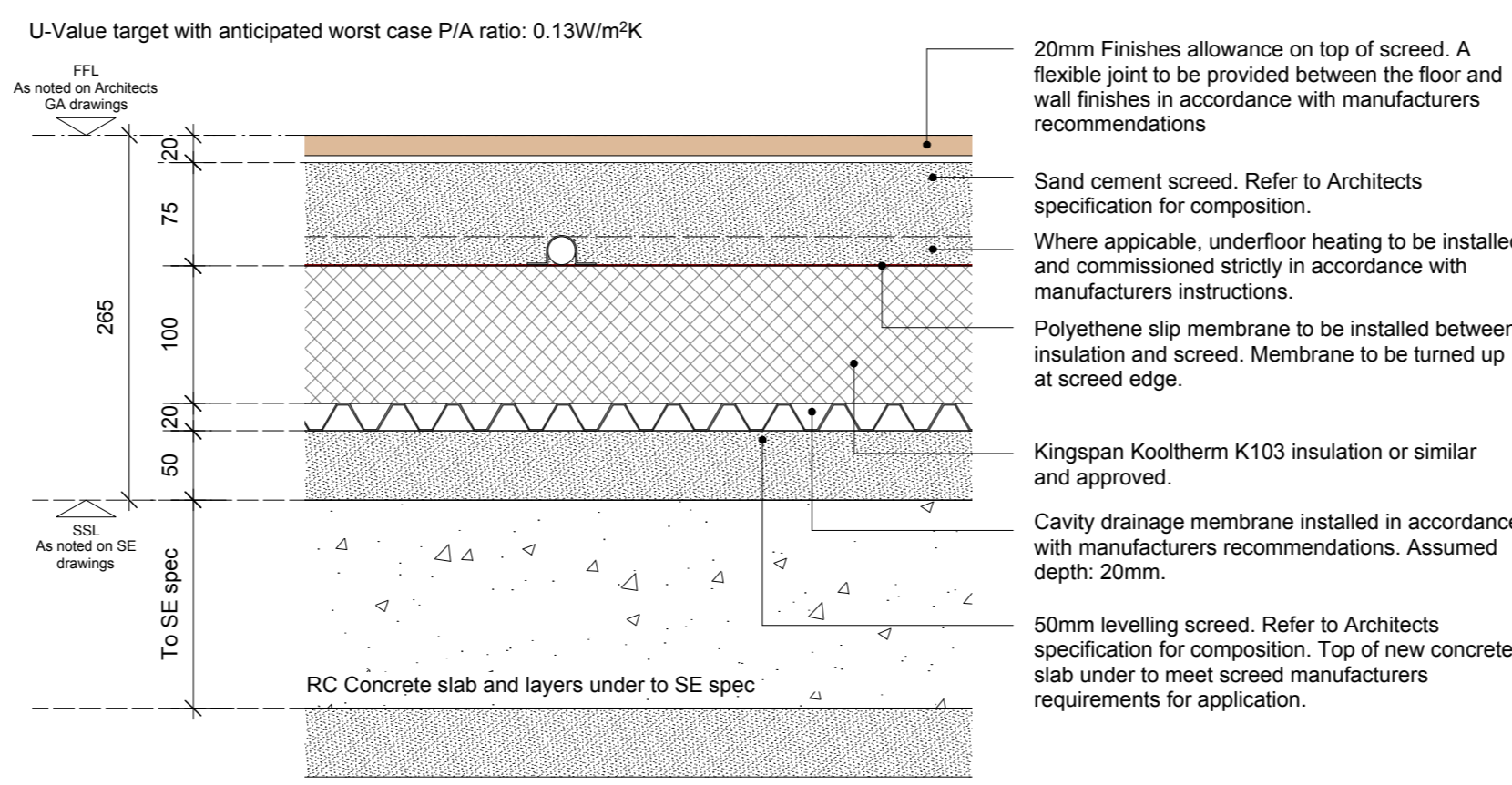


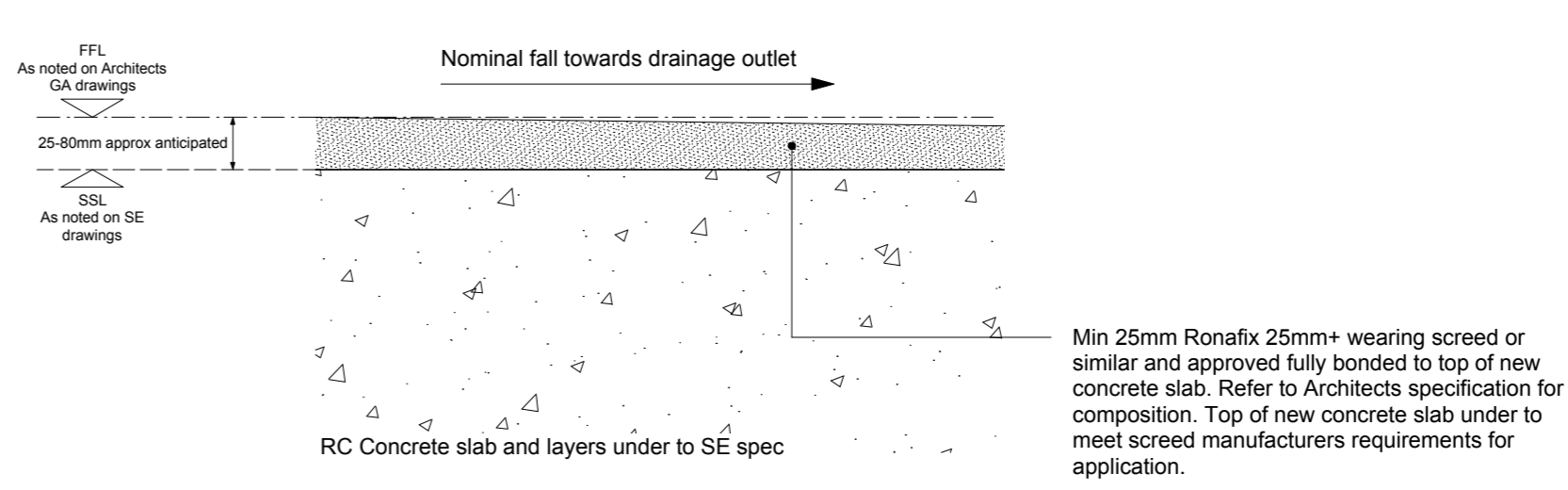
FLOOR TYPE FF01
TYPICAL FLOOR BUILD UP TO UPPER COMPARTMENT FLOORS



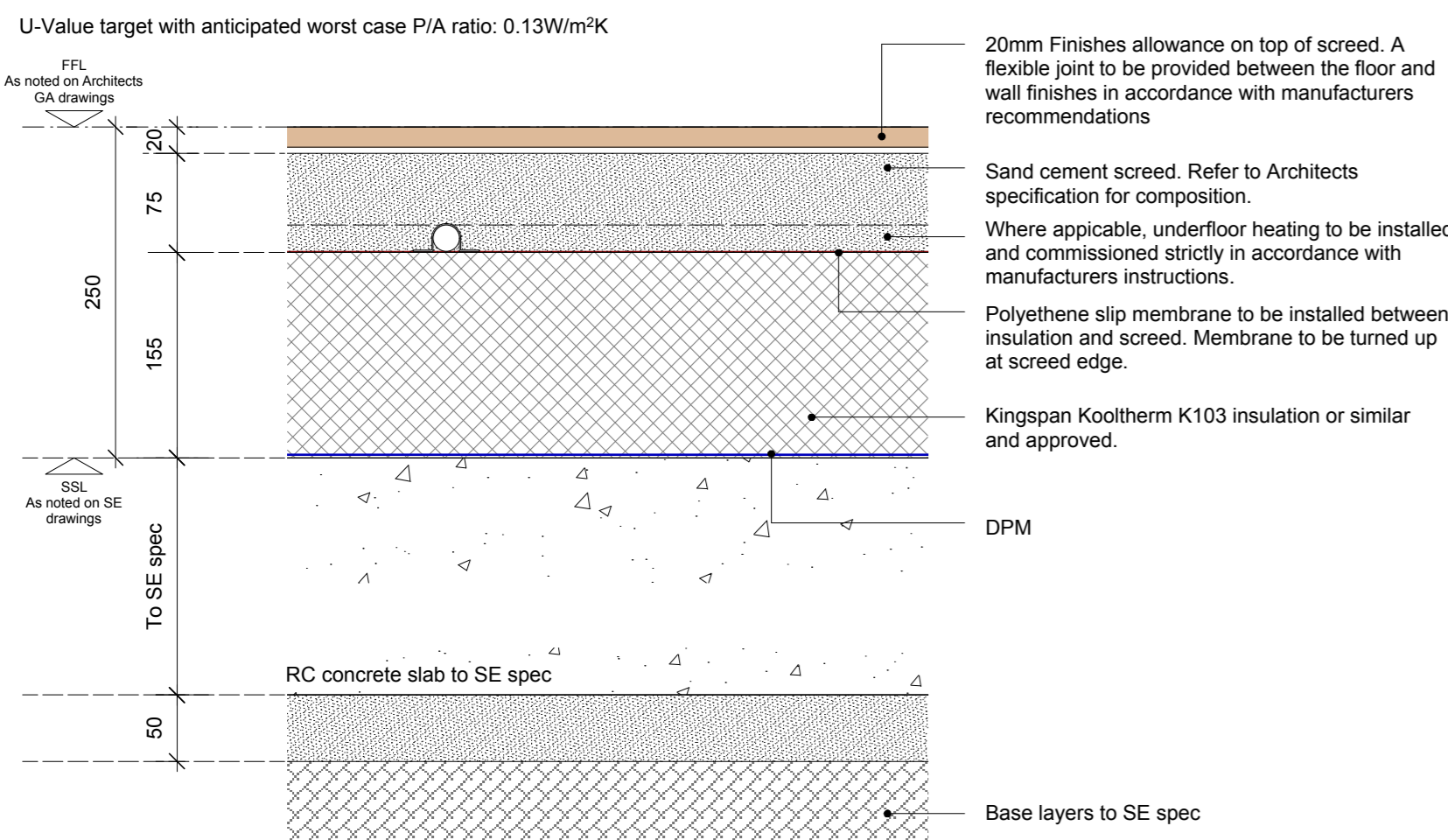
FLOOR TYPE FF02
TYPICAL BASEMENT FLOOR BUILD UP WITH DRAINED CAVITY



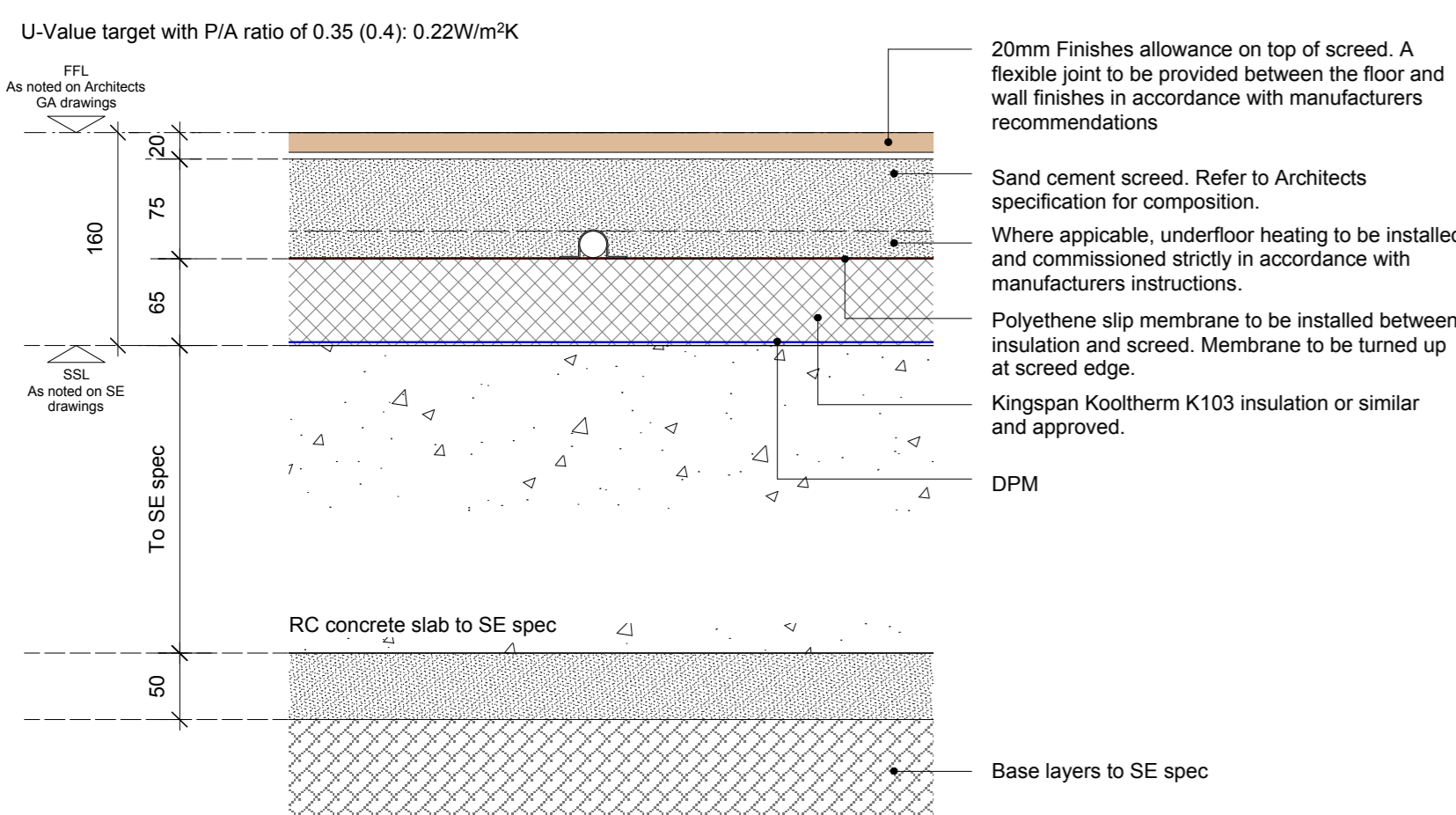
FLOOR TYPE FF03
TYPICAL WEARING SCREED TO REFUSE STORES/ BICYCLE STORES/ PLANT AND OTHER SERVICE AREAS IN BASEMENT



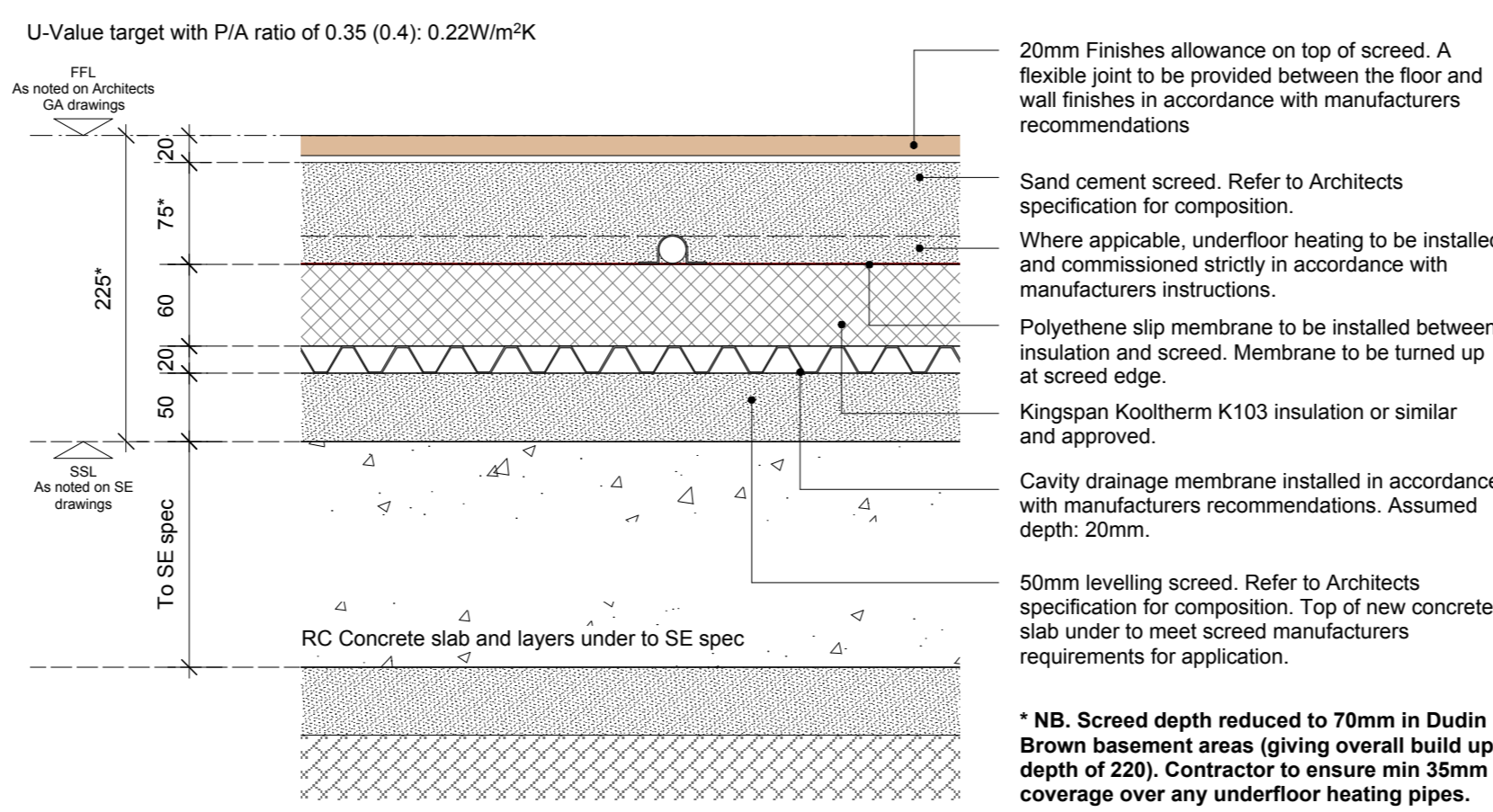
FLOOR TYPE FF04
TYPICAL GROUND BEARING SLAB FLOOR BUILD UP WITH DPM



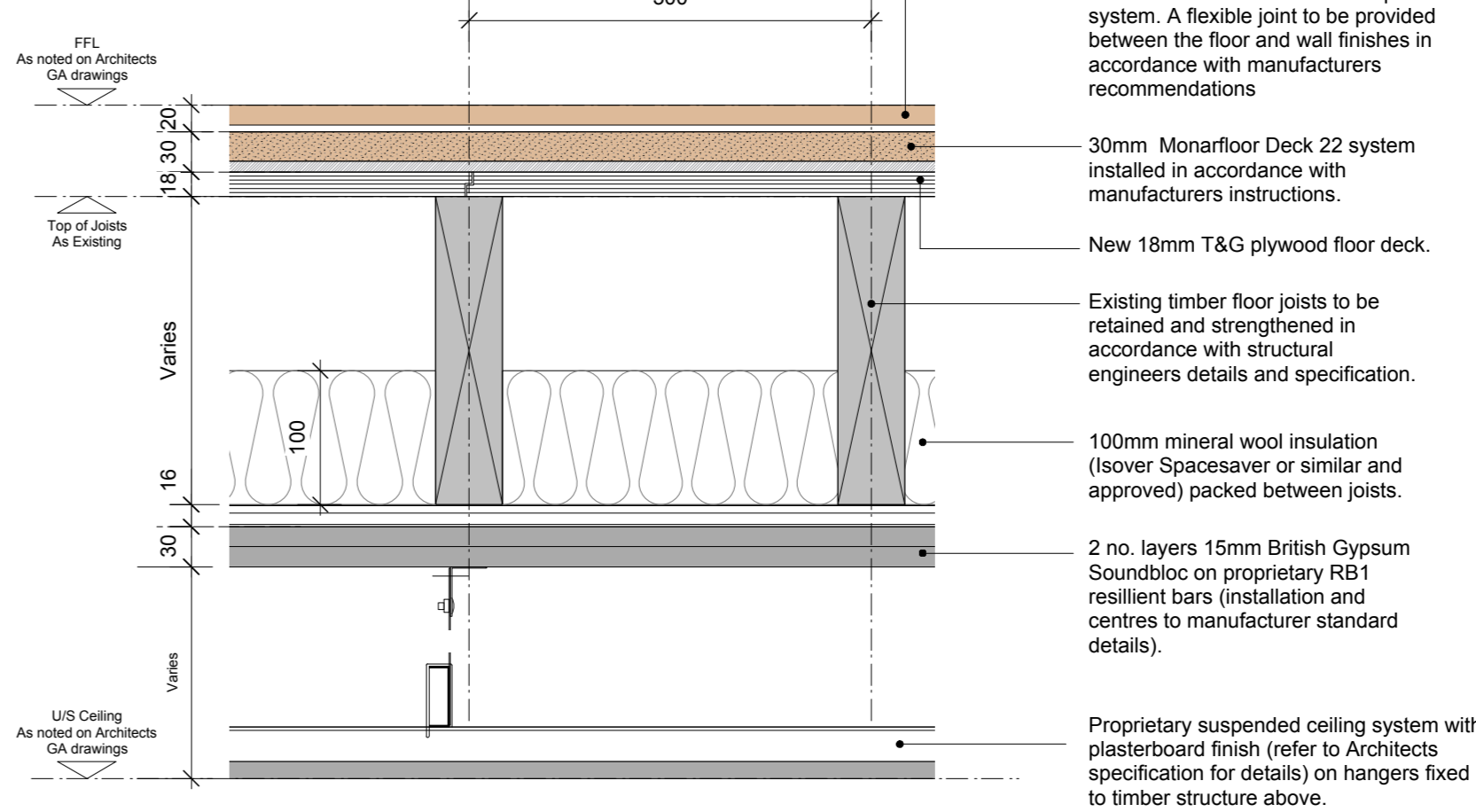
FLOOR TYPE GNHF01
TYPICAL GROUND BEARING SLAB FLOOR BUILD UP WITH DPM



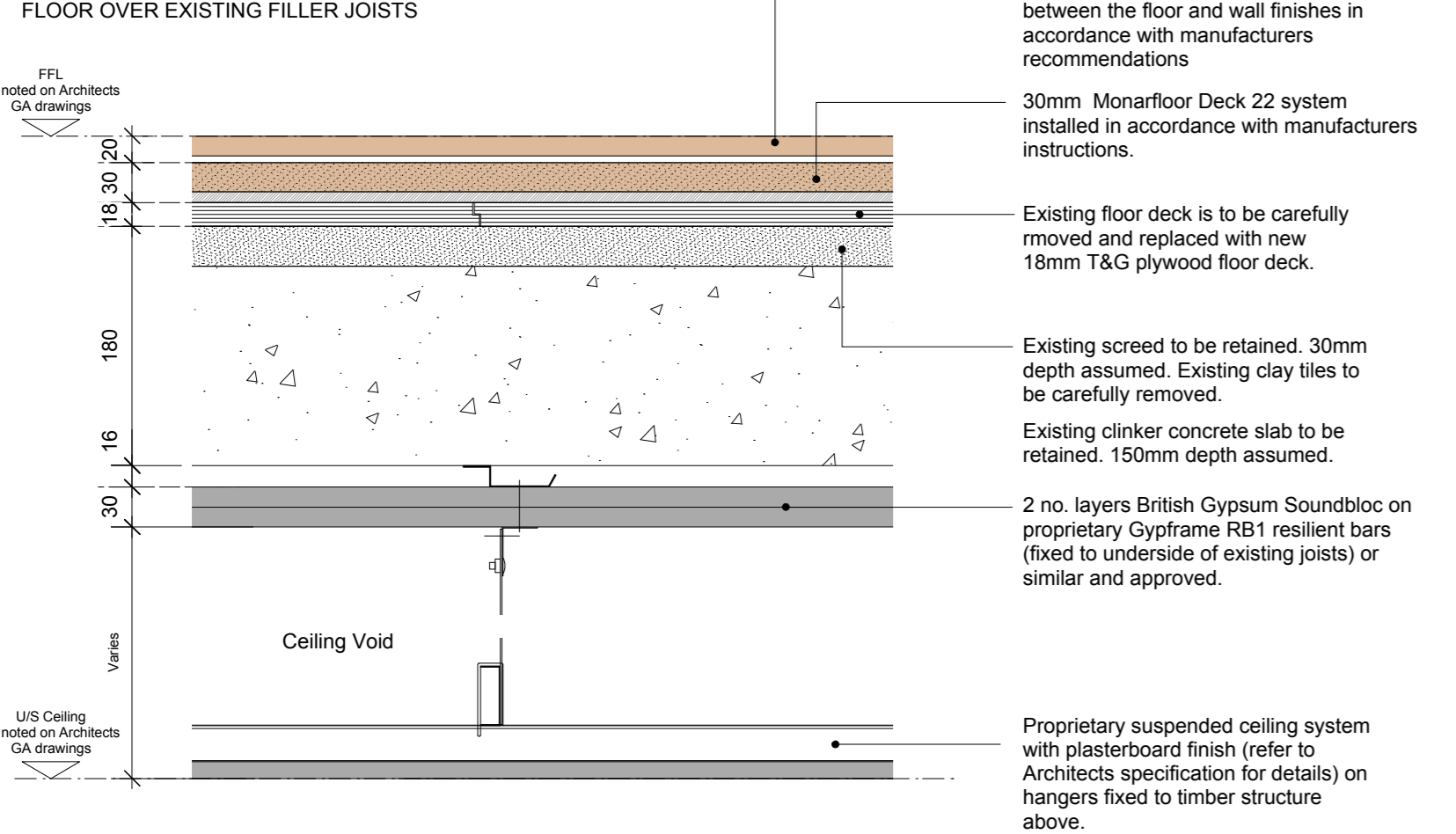
FLOOR TYPE GNHF02
TYPICAL BASEMENT FLOOR BUILD UP WITH DRAINED CAVITY



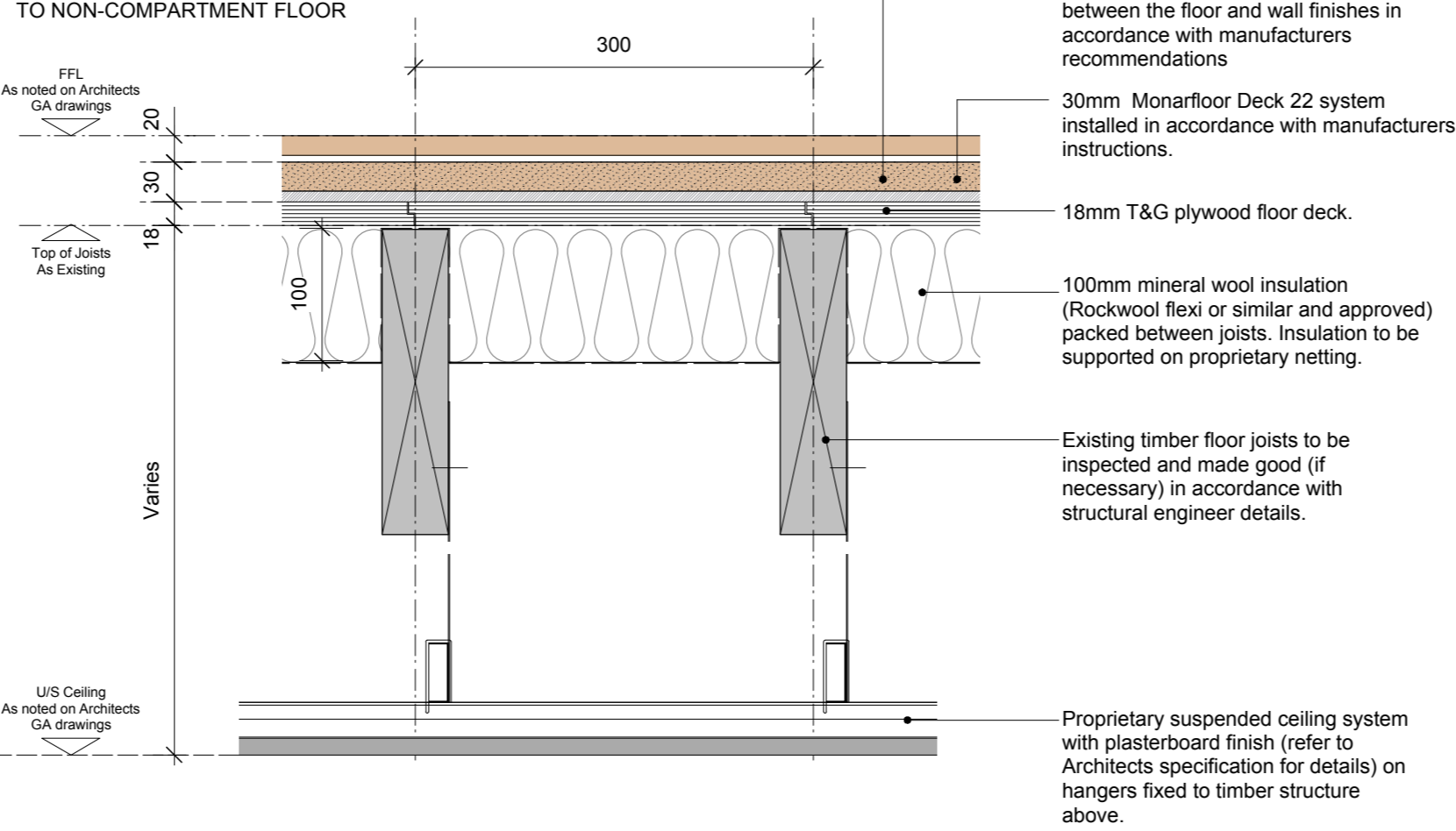
FLOOR TYPE GNHF03
TYPICAL TIMBER FLOOR BUILD UP TO COMPARTMENT FLOOR



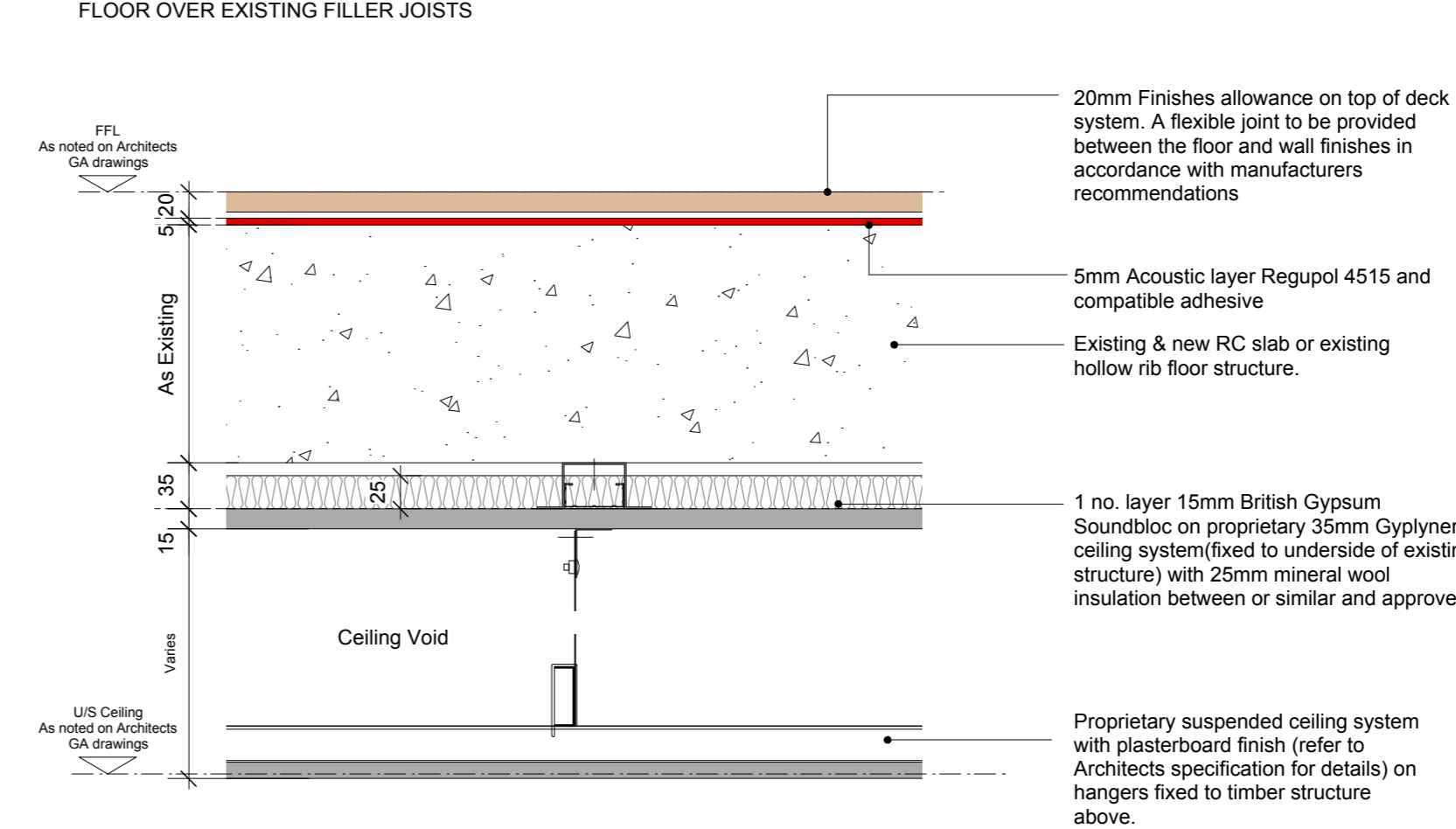
FLOOR TYPE GNHF04
TYPICAL FLOOR BUILD UP TO COMPARTMENT FLOOR OVER EXISTING FILLER JOISTS



FLOOR TYPE GNHF05
TYPICAL TIMBER FLOOR BUILD UP TO NON-COMPARTMENT FLOOR



FLOOR TYPE GNHF06
TYPICAL FLOOR BUILD UP TO COMPARTMENT FLOOR OVER EXISTING FILLER JOISTS



DIMENSION AT ORIGINAL SHEET SIZE
Contractors must check all dimensions on site. Only figured dimensions are to be worked from. Discrepancies must be reported to the Architect before proceeding. © This drawing is Copyright

- Notes:**
1. All existing constructions, structure, build ups etc are to be confirmed on site PRIOR to proceeding with the work.
 2. This drawing is to be read in conjunction with all relevant Architect GA drawings and specifications.
 3. This drawing is to be read in conjunction with all relevant drawings and specifications produced by the structural engineer and M&E consultant.
 4. This drawing is to be read in conjunction with the relevant fabric survey produced by ESG.
 5. This drawing is to be read in conjunction with the relevant condition investigation report produced by Hutton & Rostron.

ALL DETAILS TO BE APPROVED BY ACOUSTICIAN & FIRE CONSULTANT PRIOR TO INSTALLATION.

Refer to A&Q drawing no. 15 230-9000-DRG-00GN-DE040 for general floor finishes details.

Heritage Building, Bathrooms & Ensuites : Refer to A&Q drawing no. 15 230-9000-DRG-00GN-DE046 for floor build ups and typical details.

FOR CONSTRUCTION

REVISION	DRN	CHKD	DATE
T1 First Issue	FC	TW	30.09.16
T2 Floor finishes details added	FC	TW	13.10.16
C1 Floor finishes details moved to A&Q drawing no. 15230 9000-DRG-00GN-DE040. Additional notes and detail added to typical new build floors. Typical heritage floor build ups added to drawing.	ST	TW	03.01.17
C2 Note added re: heritage bathroom & ensuite floor build ups.	ST	TW	16.01.17
C3 Floor Build Up GNHF06 added	ST	TW	20.01.17
C4 Regupol note to Floor Build Up GNHF01 amended from 3mm to 5mm thick.	ST	TW	23.02.17

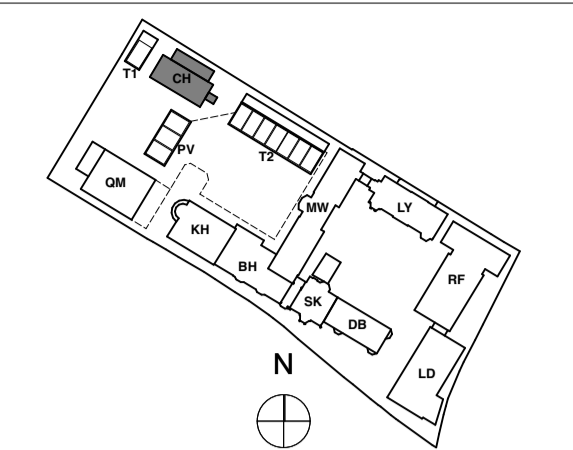


CLIENT
MOUNT ANVIL LTD

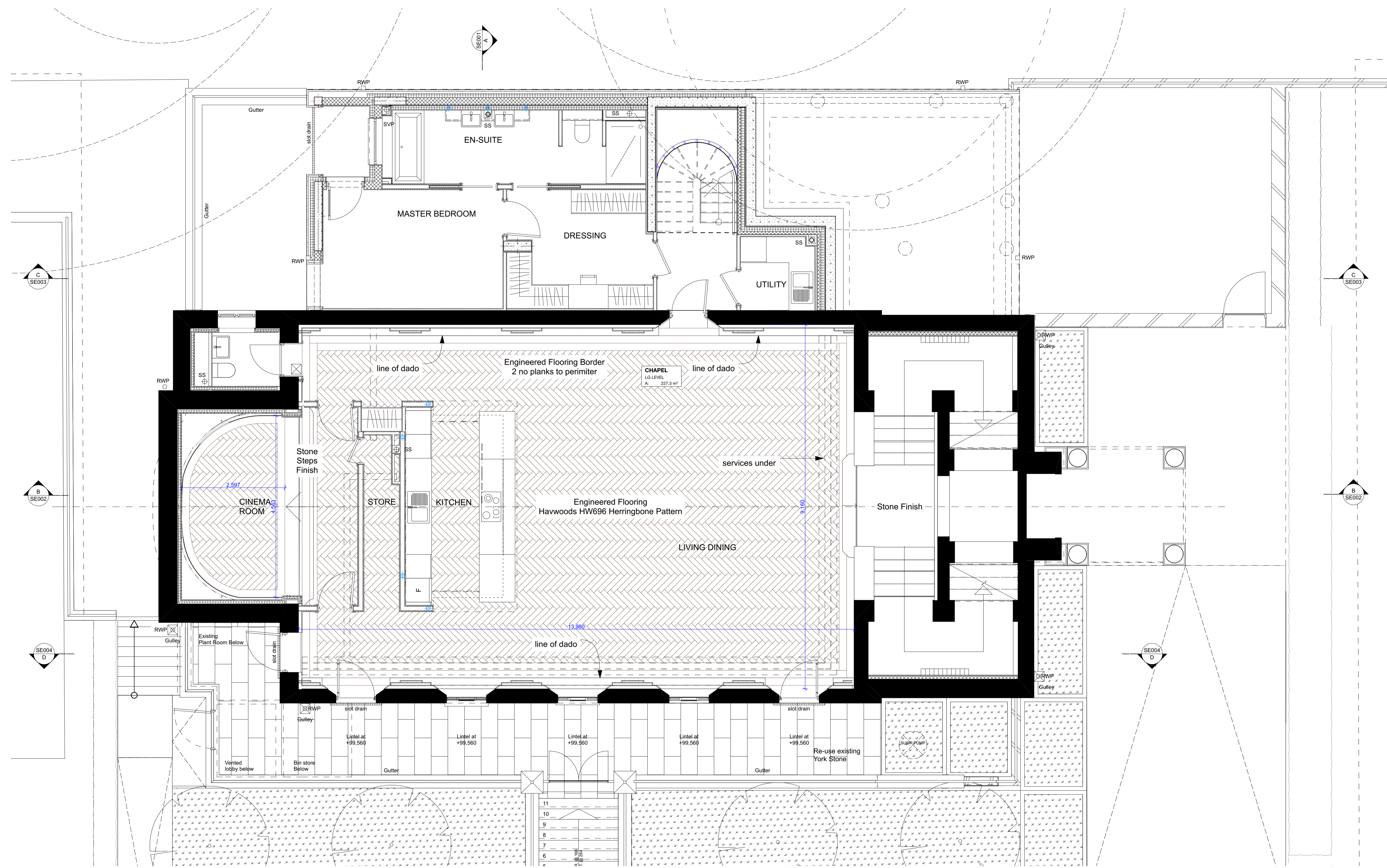
DRAWING
Generally Applicable
Floor Build-up Details 1

SCALE 1:5 @ A1 DATE September 2016
DRAWING No. 15 230 DRAWN BY EC
9000-DRG-00GN-DE034 REVISION C4

A & Q PARTNERSHIP (LONDON) LTD
THE LUX BUILDING, 2-4 HOXTON SQUARE, LONDON N1 6NU
Tel: 020 7613 2244 Fax: 020 7613 2642 Email: london@aqp.co.uk
ARCHITECTURE DESIGN MASTERPLANNING INTERIORS



KEY PLAN
NOTE:
ALL INFORMATION SHOWN ON THIS DRAWING IS SUBJECT TO DESIGN DEVELOPMENT BY SPECIALIST



FOR TENDER

REVISION	DRN	CHKD	DATE
T1 First Issue	K/C	K/C	22/03/2017



CLIENT
MOUNT ANVIL LTD

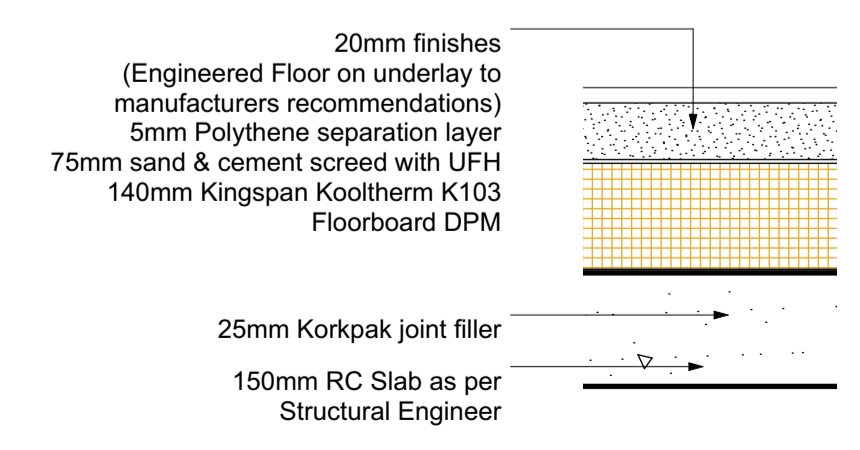
PROJECT
KIDDERPORE AVENUE

DRAWING
Chapel
Level LG Floor Finish

SCALE 1:50 @ A1 DATE 22/03/2017

DRAWING No. 9000-DRG-11CH-LG001
DRAWN BY K/C
REV T1

A & Q PARTNERSHIP (LONDON) LTD
THE LUX BUILDING, 2-4 HOXTON SQUARE, LONDON N1 6 NU
Tel: 020 7613 2244 Fax: 020 7613 2642 Email: london@aqp.co.uk
ARCHITECTURE DESIGN MASTERPLANNING INTERIORS



Chapel Living Room / Kitchen Floor Buildup