

NOTE
 This drawing to be read in conjunction with MKP Drawings
 Refer to MKP drawings for Utility cupboard, kitchen and electrical layouts.
 For further Entry Equipment Please Refer to MKP Drawings.
Wiring for pendant lights in Dining and Master Bedroom.
 Wired connection point for possible future pendant with associated patressing as necessary.
Dimable Lights - In Living and Master Bedroom.
Kitchen Manufacture to provide setting out of all sockets and fittings within cabinets as required.
Bathroom layouts shown indicatively only.
 Refer to Detailed Bathroom Layouts drawings.

KEY PLAN

LEGEND

Lighting & Fire Alarm

- Switch
- 2 way switch
- 3 way switch
- Pendant light
- Modular luminaire
- Linear Luminaire
- Single downlights
- Double directional downlights
- Wall light, internal
- Recessed low energy LED downlighter
- LED strip lighting to wardrobes & under wall units
- Wall light, external
- Recessed wall lights at floor level
- Wall light
- Single socket
- Double socket
- 5amp switch sockets for lamp circuit
- Lockable single cleaners socket
- PIR
- Passive Infrared Sensor
- Shower socket
- Video entryphone and intercom
- TV
- TV media plate. Refer to M&E specification
- BT phone & data point
- Floor recessed outlet
- Smoke detector
- Heat detector
- Extractor
- Air supply in Linear slot diffuser for supply & extract air
- Emergency Light
- Fire Detector
- Fire Detector Sounder base & flashing beacon
- Manual Fire alarm call point
- Thermostatic Sensor
- Pop-up Socket and USB Port
- Access Panel
- Size Varies
- Surface Mounted LED
- Circular Luminaire

Ceiling Info.

- 160mm Deep Ceiling Recess
- Ceiling Recess Refer to GAs
- Cornice or Ceiling Ornament
- Sloping section of ceiling
- Armstrong Ultima + microlook acoustic ceiling tiles with Preclude 15 grid system and Armstrong Acorn transition between tile/margin or similar and approved.

FOR CONSTRUCTION

REVISION	DRN	CHKD	DATE
C1 Issued for Construction	GS	TW	31/01/2017
C2 Amendments following Client Comments	GC	TW	06/03/2017
C3 Amendments following Client comments on 07/03/17	GC	TW	09/03/2017



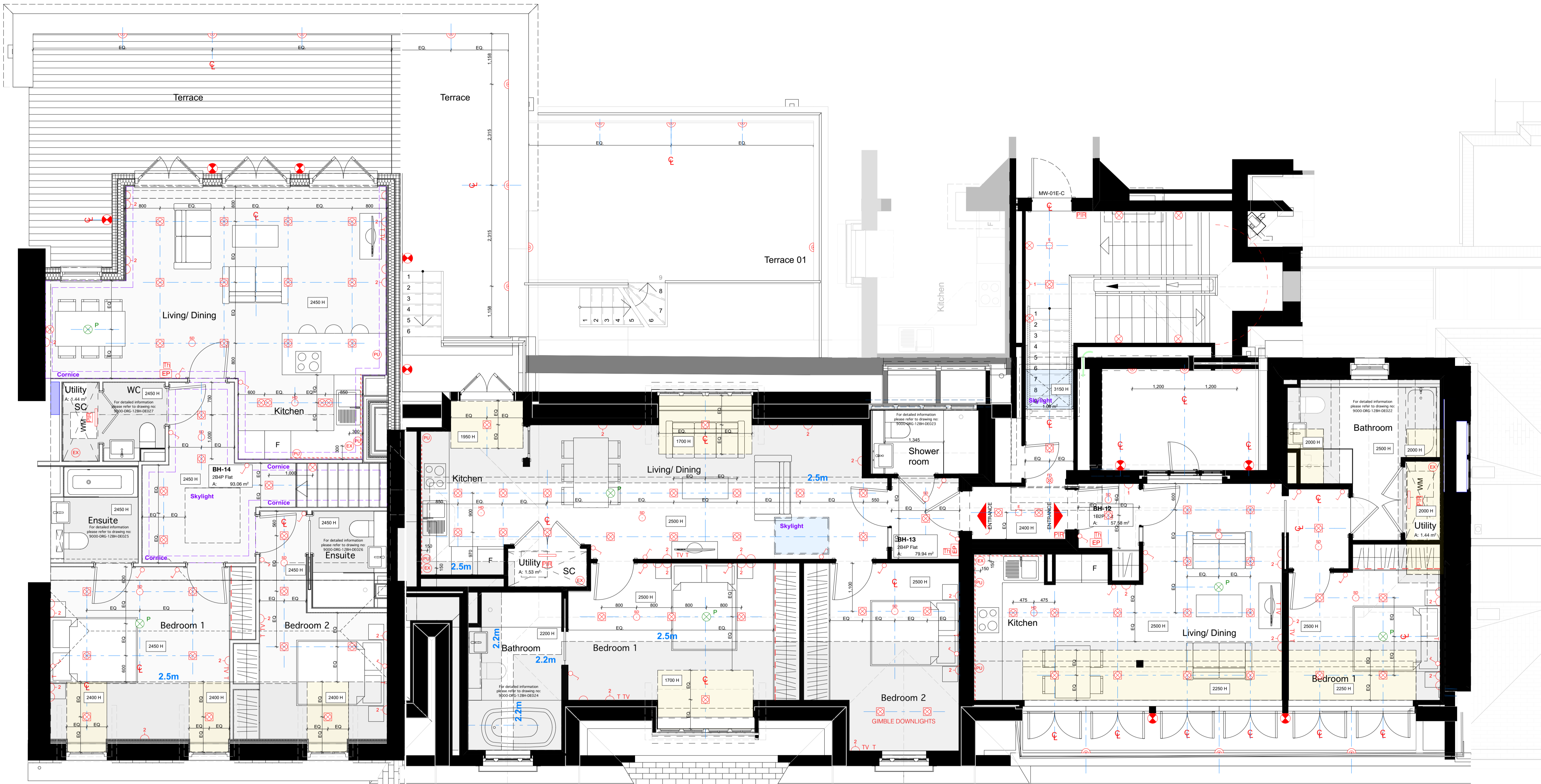
PROJECT
 KIDDERPORE AVENUE

DRAWING
 Bay House
 Level 02 Proposed RCP

SCALE 1:50 @ A1 DATE March 2017

DRAWING No. 15 230 DRAWN BY GS
 9000-DRG-23BH-02030 REV REV
 C3

A & Q PARTNERSHIP (LONDON) LTD
 THE LUX BUILDING, 2-4 HOXTON SQUARE, LONDON N1 6 NU
 Tel: 020 7613 2244 Fax: 020 7613 2642 Email: london@a&q.co.uk
 ARCHITECTURE DESIGN MASTERPLANNING INTERIORS



Floor plan cut plane @ 1.5m from FFL

Floor plan cut plane @ 1.2m from FFL

BIM Server: ACP-L14 - BIM Server 1012020 Kidderpore Bay House 4