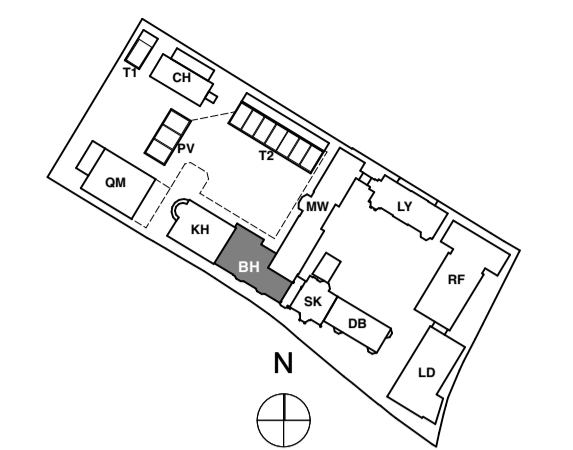


NOTE: FFLs are subjected to alterations.

10 50 100mm

DIMENSION AT ORIGINAL SHEET SIZE  
Contractors must check all dimensions on site. Only figured dimensions are to be worked from.  
Discrepancies must be reported to the Architect before proceeding. © This Drawing is Copyright



KEY PLAN  
NOTE:  
ALL DIMENSIONS WITH \* (STAR) ARE ANTICIPATED AND SHOULD BE CHECKED AND CONFIRMED ON SITE PRIOR TO CONSTRUCTION

General Notes:

- 1. All types noted below are based on the British Gypsum range. 'Similar and approved' products will be considered by the client. Any alterations to the specifications below are to be approved by the client PRIOR to order.
2. Drying drawings are to be read in conjunction with all relevant AQP GA and M&E consultant drawings.
3. Moisture resistant plasterboard is to be used in all wet areas (Kitchens/Bathrooms, En-suites and Utility Cupboards). Areas requiring moisture resistant board are identified with the 'M' prefix in the partition type. Tiled surfaces: MR Plasterboard to be replaced with 12.5mm Glasroc H Tilebacker boards.
4. 18mm WBP plywood support pattresses on proprietary service plates are to be provided in the following areas:
i. Kitchens (Full height)
ii. Bathrooms (A band between 300-1800mm)
iii. Living Rooms (1500mm(wide) x 1035mm(high) behind wall mounted TV positions, exact locations to be agreed on site with client).
5. Additional noggings/supports are to be provided as necessary for radiators, kitchen units, wall mounted TVs, shower mixers & diverters, etc.
6. Deflection head details are indicated at partition heads giving min. vertical deflection allowance of 25mm. Extra deep fange channels and packing to be provided in accordance with manufacturers standard details.
7. All necessary beads etc. to be provided.

General Internal Suspended Ceiling (Newbuild):
British Gypsum Cassoline MF ceiling system finished with 1 no. 12.5mm Wallboard in 'dry areas' and 12.5mm moisture resistant wallboard in 'wet areas'. Gyffrime M12 strap hangers to be fixed to u/s of concrete soffit with Gyffrime M12 soffit cleats. Proprietary primary and secondary support grids to be provided at centres in accordance with manufacturers standard details. All perimeter channels etc. to be provided in accordance with manufacturers standard details. All joints to be taped and jointed, giving a smooth and seamless finish, ready for decoration.

FOR CONSTRUCTION

Table with 4 columns: REVISION, DRN, CHKD, DATE. Row 1: C1 Issued for Construction, KGN/V, TW, 31/01/2017.



CLIENT MOUNT ANVIL LTD



PROJECT KICKER POOR AVENUE

DRAWING No. 15 230  
9000-DRG-03 BH-0101  
Level 01 Proposed GA Plan

SCALE: 1:50, 1:55 @ A1 DATE January 2017

DRAWING No. 15 230  
9000-DRG-03 BH-0101  
Level 01 Proposed GA Plan

A & Q PARTNERSHIP (LONDON) LTD  
THE LUX BUILDING, 2-4 HOXTON SQUARE, LONDON N1 6 NU  
Tel: 020 7613 2244 Fax: 020 7613 2642 Email: london@aqp.co.uk  
ARCHITECTURE DESIGN MASTERPLANNING INTERIORS



- Finishes Legend: External and Separating Wall Lining Types.
Type P1: External Metsec Wall - 2 layers of 15mm British Gypsum SoundBloc on Vapour Control Layer.
Type P1M: As type P1, but with outer layer replaced with 15mm Gyproc SoundBloc Moisture Resistant plasterboard.
Type P2: Typical Gyproc Quiet IWL Separating Wall - 2 layers of 15mm British Gypsum SoundBloc or similar to each side.
Type P2M: As type P2, but with outer layer replaced with 15mm Gyproc SoundBloc Moisture Resistant plasterboard.
Type P3: Independent Wall Lining Generally to cores - Gyffrime IWL at 600mm centres with 1 layer of 15mm British Gypsum Gyproc SoundBloc.
Type P3M: As type P3, but with outer layer replaced with 15mm Gyproc SoundBloc Moisture Resistant plasterboard.
Type P4: Thermal Lining to existing buildings (upper floors) - Gyffrime Universal GL1 channels at 600mm centres.
Type P4M: Thermal Lining to existing buildings to Wet areas (upper floors) - Gyffrime Universal GL1 channels at 600mm centres.
Type P5: SVP Boxings - 2 no. layers 15mm SoundBloc plasterboard on 60mm Gyffrime studwork.
Type P6: Thermal Independent Wall Lining with Drained cavity.
Type P7: Service Riser Wall (Shaftwall) FR60 minutes.
Type P8: Thermal Independent Wall Lining with Drained cavity.
Type P9: Load-bearing studwork to external Wall (Rosalind Franklin).
Type P10: Separating Wall Gyproc Quiet IWL (Pavillions) - 2 no. layers of 15mm British Gypsum SoundBloc.
Type P10M2: As type P10, but with one side of SoundBloc replaced with 15mm Gyproc SoundBloc Moisture Resistant plasterboard.
Type P11: As type P4, but with additional membrane Newton Lath.
Type P12: Timber stud braced wall.
Type P12M2: As type P12, but with both layers replaced with 15mm Gyproc SoundBloc Moisture Resistant plasterboard.
Type P13: Timber stud braced wall.
Type P13M2: As type P13, but with one side of SoundBloc replaced with 15mm Gyproc SoundBloc Moisture Resistant plasterboard.
Type P14: As type P4 but with the layer of Plasterboard replaced with Gyproc Moisture Resistant plasterboard.
Type P14M: As type P4 but with the layer of Plasterboard replaced with Gyproc Moisture Resistant plasterboard.
Type P15: Typical Sacrificial Wall - Gyffrime Universal GL1 channel.
Type P15M: As type P15 but with outer layer replaced with 12.5mm Gyproc SoundBloc.
Type P16: As type P15 but with outer layer replaced with 12.5mm Gyproc SoundBloc.
Type P17: Typical Sacrificial Wall (Generally for WC Drainage runs).
Type P17M: As type P17 but with outer layer replaced with 12.5mm Gyproc SoundBloc.
Type P18: As type P17 but with outer layer replaced with 12.5mm Gyproc SoundBloc.
Type P19: As type P17 but with outer layer replaced with 12.5mm Gyproc SoundBloc.
Type P20: Internal Partition with 97mm 70mm Gyffrime 'C' studs.
Type P20M: As type P20, but with one side of SoundBloc replaced with 12.5mm Gyproc SoundBloc Moisture Resistant plasterboard.
Type P20M2: As type P20, but with both layers replaced with 12.5mm Gyproc SoundBloc Moisture Resistant plasterboard.
Type P21: Internal Partition with 155mm 92mm Gyffrime 'C' studs.
Type P21M: As type P21, but with one side of SoundBloc replaced with 12.5mm Gyproc SoundBloc Moisture Resistant plasterboard.
Type P21M2: As type P21, but with both layers replaced with 15mm Gyproc SoundBloc Moisture Resistant plasterboard.
Type P22: As type P22, but with one side of SoundBloc replaced with 12.5mm Gyproc SoundBloc Moisture Resistant plasterboard.
Type P22M: As type P22, but with one side of SoundBloc replaced with 12.5mm Gyproc SoundBloc Moisture Resistant plasterboard.
Type P23: As type P23, but with one side of SoundBloc replaced with 12.5mm Gyproc SoundBloc Moisture Resistant plasterboard.
Type P24: Internal Partition with 122mm 70mm Gyffrime 'C' studs.
Type P24M: As type P24, but with one side of SoundBloc replaced with 12.5mm Gyproc SoundBloc Moisture Resistant plasterboard.
Type P25: Timber Stud Wall (Queen Mothers Hall) 100mm Stud Wall with 1 layer of 12.5mm British Gypsum Gyproc Wallboard.
Type P25M: As type P25, but with one side of SoundBloc replaced with 12.5mm Gyproc Wallboard Moisture Resistant plasterboard.
Type P26: Internal Partition with 141mm.
Type P26M: As type P26, but with one side of SoundBloc replaced with 12.5mm Gyproc SoundBloc Moisture Resistant plasterboard.
Type P27: As type P27, but with one side of SoundBloc replaced with 12.5mm Gyproc SoundBloc Moisture Resistant plasterboard.
Type P28: As type P28, but with one side of SoundBloc replaced with 12.5mm Gyproc SoundBloc Moisture Resistant plasterboard.
Type P29: As type P29, but with one side of SoundBloc replaced with 12.5mm Gyproc SoundBloc Moisture Resistant plasterboard.
Type P30: As type P30, but with one side of SoundBloc replaced with 12.5mm Gyproc SoundBloc Moisture Resistant plasterboard.
Type P31: As type P31, but with one side of SoundBloc replaced with 12.5mm Gyproc SoundBloc Moisture Resistant plasterboard.
Type P32: As type P32, but with one side of SoundBloc replaced with 12.5mm Gyproc SoundBloc Moisture Resistant plasterboard.
Type P33: As type P33, but with one side of SoundBloc replaced with 12.5mm Gyproc SoundBloc Moisture Resistant plasterboard.
Type P34: As type P34, but with one side of SoundBloc replaced with 12.5mm Gyproc SoundBloc Moisture Resistant plasterboard.
Type P35: As type P35, but with one side of SoundBloc replaced with 12.5mm Gyproc SoundBloc Moisture Resistant plasterboard.
Type P36: As type P36, but with one side of SoundBloc replaced with 12.5mm Gyproc SoundBloc Moisture Resistant plasterboard.
Type P37: As type P37, but with one side of SoundBloc replaced with 12.5mm Gyproc SoundBloc Moisture Resistant plasterboard.
Type P38: As type P38, but with one side of SoundBloc replaced with 12.5mm Gyproc SoundBloc Moisture Resistant plasterboard.
Type P39: As type P39, but with one side of SoundBloc replaced with 12.5mm Gyproc SoundBloc Moisture Resistant plasterboard.
Type P40: As type P40, but with one side of SoundBloc replaced with 12.5mm Gyproc SoundBloc Moisture Resistant plasterboard.
Type P41: As type P41, but with one side of SoundBloc replaced with 12.5mm Gyproc SoundBloc Moisture Resistant plasterboard.
Type P42: As type P42, but with one side of SoundBloc replaced with 12.5mm Gyproc SoundBloc Moisture Resistant plasterboard.
Type P43: As type P43, but with one side of SoundBloc replaced with 12.5mm Gyproc SoundBloc Moisture Resistant plasterboard.
Type P44: As type P44, but with one side of SoundBloc replaced with 12.5mm Gyproc SoundBloc Moisture Resistant plasterboard.
Type P45: As type P45, but with one side of SoundBloc replaced with 12.5mm Gyproc SoundBloc Moisture Resistant plasterboard.
Type P46: As type P46, but with one side of SoundBloc replaced with 12.5mm Gyproc SoundBloc Moisture Resistant plasterboard.
Type P47: As type P47, but with one side of SoundBloc replaced with 12.5mm Gyproc SoundBloc Moisture Resistant plasterboard.
Type P48: As type P48, but with one side of SoundBloc replaced with 12.5mm Gyproc SoundBloc Moisture Resistant plasterboard.
Type P49: As type P49, but with one side of SoundBloc replaced with 12.5mm Gyproc SoundBloc Moisture Resistant plasterboard.
Type P50: Variable Lining / Sacrificial Wall - Gyffrime Universal GL1 channel.
Type P51: Drained Cavity with Gyffrime Universal (Generally within Basements) GL1 channel.
Type P52: Drained Cavity with mesh system.
Type P53: Assumed existing plasterboard on studwork.
Type P54: Tiling to pool area.
Type P55: Assumed plaster repair or Lime Plaster repair.