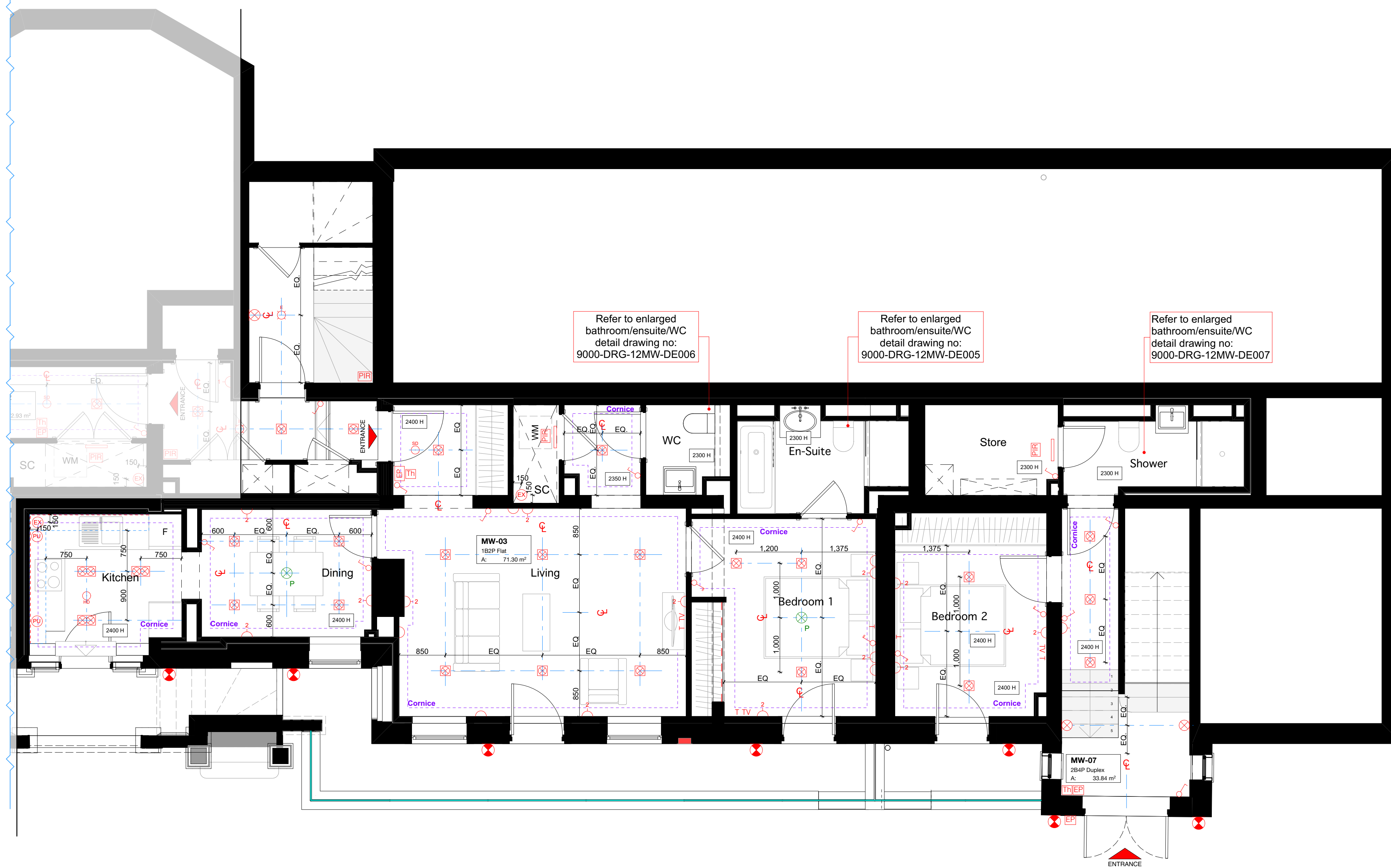


FOR CONTINUATION REFER TO DRAWING  
9000-DRG-23MW-LG030

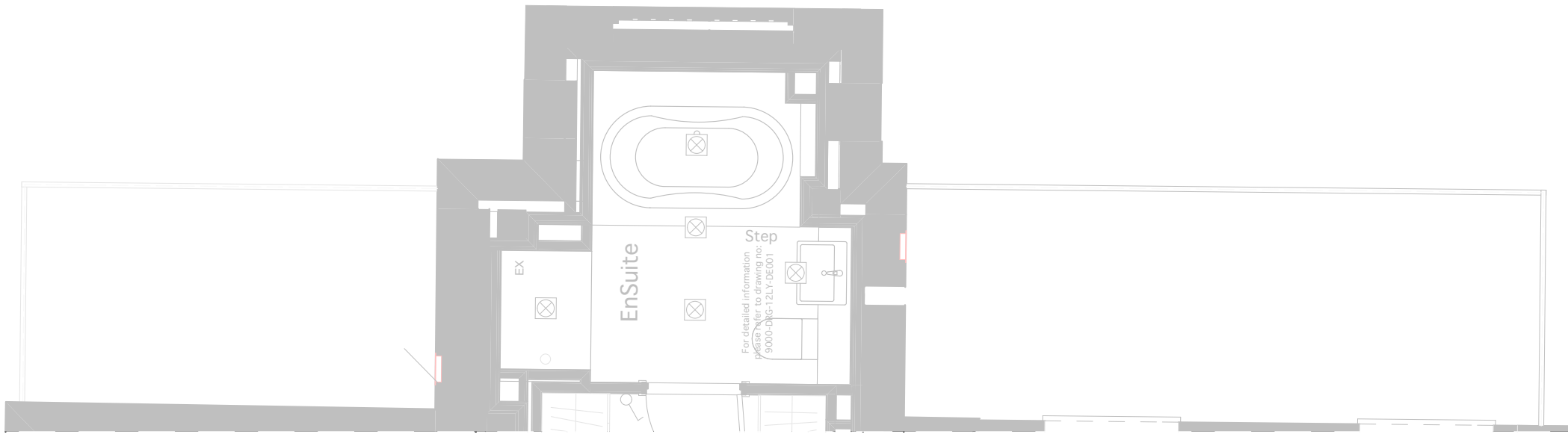


Refer to enlarged bathroom/ensuite/WC detail drawing no: 9000-DRG-12MW-DE006

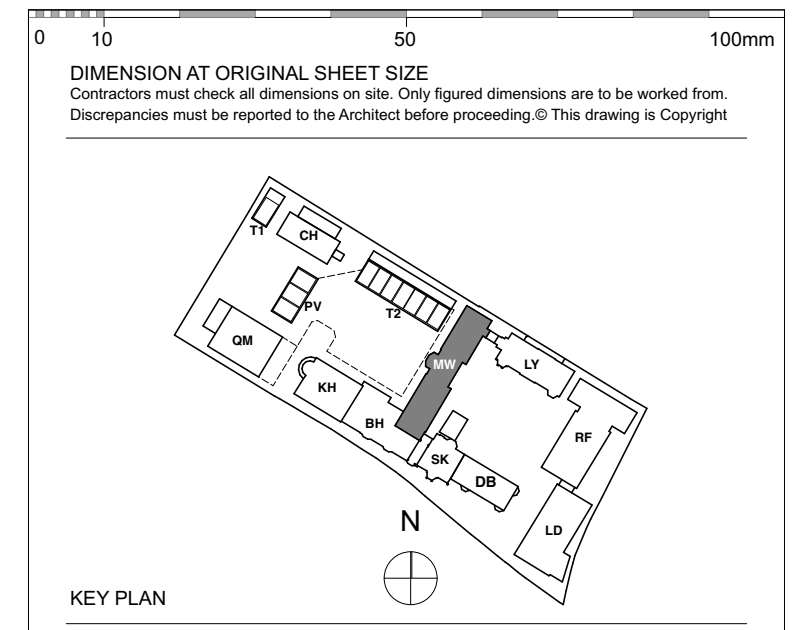
Refer to enlarged bathroom/ensuite/WC detail drawing no: 9000-DRG-12MW-DE005

Refer to enlarged bathroom/ensuite/WC detail drawing no: 9000-DRG-12MW-DE007

FOR CONTINUATION REFER TO DRAWING  
9000-DRG-23LY-LG030



**NOTE**  
This drawing to be read in conjunction with MKP Drawings.  
Refer to MKP drawings for Utility cupboard, kitchen and electrical layouts.  
For further Entry Equipment Please Refer to MKP Drawings.  
Wiring for pendant lights in Dining and Master Bedroom.  
Wired connection points for possible future pendant with associated patterning as necessary.  
Dimable Lights - In Living and Master Bedroom.  
Kitchen Manufacture to provide setting out of all sockets and fittings within cabinets as required.  
Bathroom layouts shown indicatively only.  
Refer to Detailed Bathroom Layouts drawings.



**LEGEND**

**Lighting & Fire Alarm**

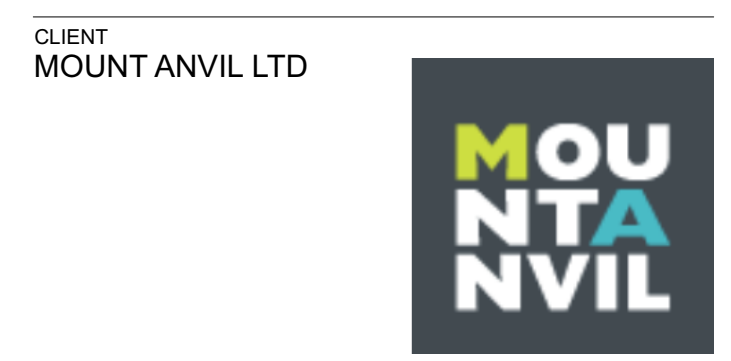
- Switch
- 2 way switch
- 3 way switch
- Pendant light
- Modular luminaire
- Linear Luminaire
- Single downlights
- Double directional downlights
- Wall light, internal
- Recessed low energy LED downlighter
- LED strip lighting to wardrobes & under wall units
- Wall light, external
- Recessed wall lights at floor level
- Wall light
- Single socket
- Double socket
- 5amp switch sockets for lamp circuit
- Lockable single cleaners socket
- Passive Infrared Sensor
- Shaver socket
- Video interphone and intercom
- TV media plate. Refer to M&E specification
- BT phone & data point
- Floor recessed outlet
- Smoke detector
- Heat detector
- Extractor
- Air supply in Linear slot diffuser for supply & extract air
- Emergency Light
- Fire Detector
- Fire Detector Sounder base & Bashing beacon
- Manual Fire alarm call point
- Thermostatic Sensor
- Pop-up Socket and USB Port
- Access Panel
- Size Varies
- Surface Mounted LED Circular Luminaire

**Ceiling Info.**

- 160mm Deep Ceiling Recess
- Ceiling Recess Refer to GAs
- Cornice or Ceiling Ornament
- Sloping section of ceiling
- Armstrong Ultima + microlook acoustic ceiling tiles with Preclude 15 grid system and Armstrong Acorn transition between tiles/margin or similar and approved.

**FOR CONSTRUCTION**

REVISION	DRN	CHKD	DATE
C1 Issued for Construction	GS	TW	31/01/2017
C2 Plans Revised Following Workshop	GS	TW	21/02/2017
C3 Amendments to RCPs and Small Power as agreed in workshop 20.02.17	GC	TW	07/03/2017



PROJECT  
KIDDEPORE AVENUE

DRAWING  
Maynard Wing  
Level LG Proposed RCP Sheet 2 of 2

SCALE 1:50 @ A1 DATE March 2017

DRAWING No. 15 230  
9000-DRG-23MW-LG031  
DRAWN BY GS  
REV C3

A & Q PARTNERSHIP (LONDON) LTD  
THE LUX BUILDING, 2-4 HOXTON SQUARE, LONDON N1 6 NU  
Tel: 020 7613 2244 Fax: 020 7613 2642 Email: london@aqp.co.uk  
ARCHITECTURE DESIGN MASTERPLANNING INTERIORS