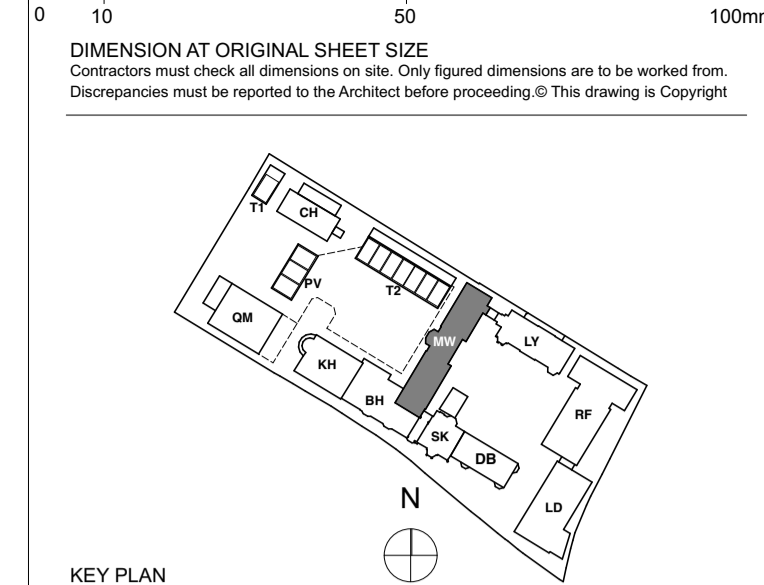


**NOTE**  
 This drawing to be read in conjunction with MKP Drawings  
 Refer to MKP drawings for Utility cupboard, kitchen and electrical layouts.  
 For further Entry Equipment Please Refer to MKP Drawings.  
 Wiring for pendant lights in Dining and Master Bedroom.  
 Wired connection points for possible future pendant with associated patterning as necessary.  
 Dimable Lights - In Living and Master Bedroom.  
 Kitchen Manufacture to provide setting out of all sockets and fittings within cabinets as required.  
 Bathroom layouts shown indicatively only.  
 Refer to Detailed Bathroom Layouts drawings.



**LEGEND**

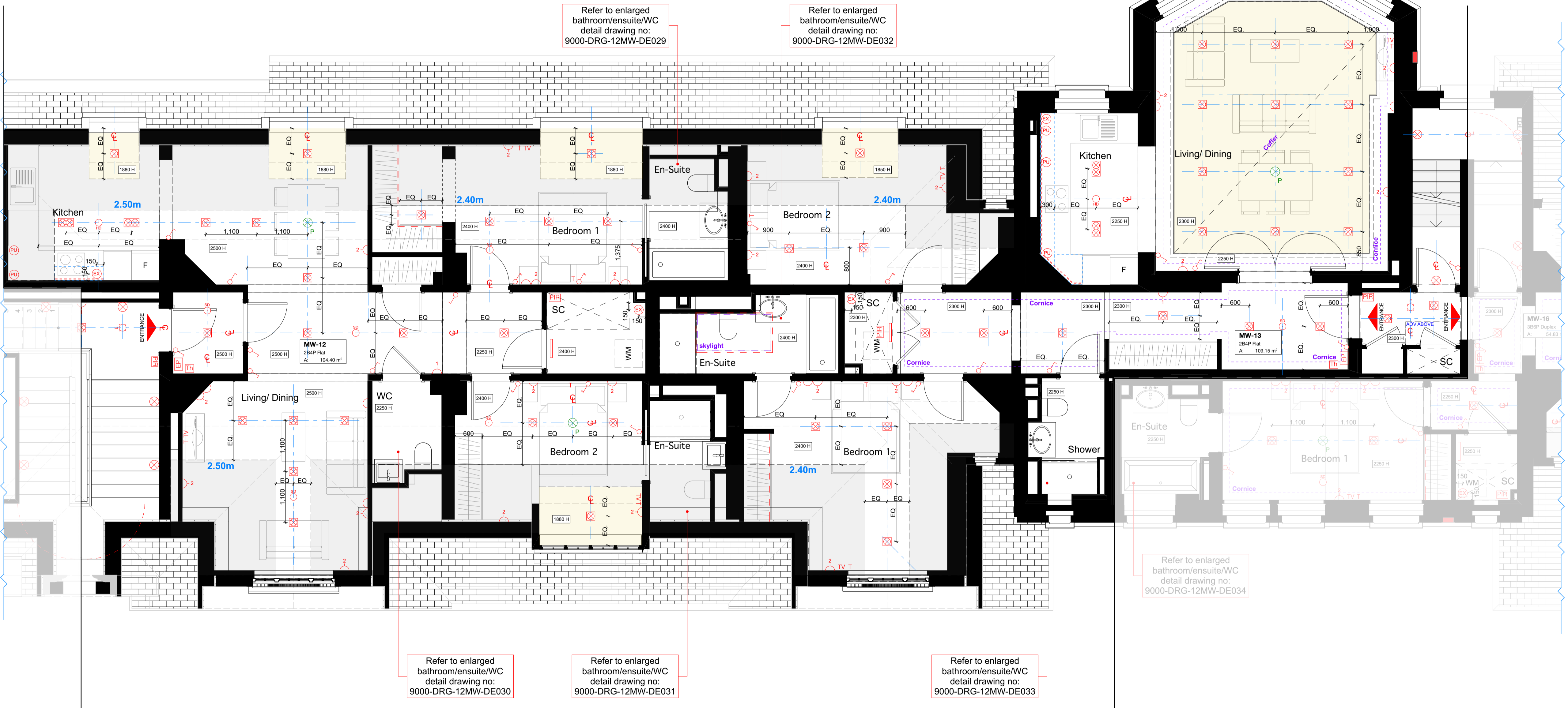
○	Switch	○	Emergency Light
○	2 way switch	○	Fire Detector
○	3 way switch	○	Fire Detector Sounder base & flashing beacon
○	Pendant light	○	Manual Fire alarm call point
○	Modular luminaire	○	Thermostatic Sensor
○	Linear Luminaire	○	Pop-up Socket and USB Port
○	Single downlights	○	Access Panel
○	Double directional downlights	○	Size Varies
○	Wall light, internal	○	Surface Mounted LED Circular Luminaire
○	Recessed low energy LED downlighter		
○	LED strip lighting to wardrobes & under wall units		
○	Wall light, external		
○	Recessed wall lights at floor level		
○	Wall light		
○	Single socket		
○	Double socket		
○	5amp switch sockets for lamp circuit		
○	Lockable single cleaners socket		
○	Passive Infrared Sensor		
○	Shower socket		
○	Video interphone and intercom		
○	TV media plate. Refer to M&E specification		
○	BT phone & data point		
○	Floor recessed outlet		
○	Smoke detector		
○	Heat detector		
○	Extractor		
○	Air supply in Linear slot diffuser for supply & extract air		

**Ceiling Info.**

○	160mm Deep Ceiling Recess
○	Ceiling Recess Refer to GAs
○	Cornice or Ceiling Ornament
○	Sloping section of ceiling
○	Armstrong Ultima + microlook acoustic ceiling tiles with Prelude 15 grid system and Armstrong Acorn transition between tiles/margin or similar as approved.

FOR CONTINUATION REFER TO DRAWING 9000-DRG-23BH-02030

FOR CONTINUATION REFER TO DRAWING 9000-DRG-23MW-02031



Refer to enlarged bathroom/ensuite/WC detail drawing no: 9000-DRG-12MW-DE029

Refer to enlarged bathroom/ensuite/WC detail drawing no: 9000-DRG-12MW-DE032

Refer to enlarged bathroom/ensuite/WC detail drawing no: 9000-DRG-12MW-DE034

Refer to enlarged bathroom/ensuite/WC detail drawing no: 9000-DRG-12MW-DE030

Refer to enlarged bathroom/ensuite/WC detail drawing no: 9000-DRG-12MW-DE031

Refer to enlarged bathroom/ensuite/WC detail drawing no: 9000-DRG-12MW-DE033

**FOR CONSTRUCTION**

REVISION	DRN	CHKD	DATE
C1 Issue for Construction	GS	TW	31/01/2017
C2 Amendments to RCPs and Small Power as agreed in workshop 20.02.17	GC	TW	07/03/2017



PROJECT  
 MOUNT ANVIL LTD  
 KIDDEPORE AVENUE

DRAWING  
 Maynard Wing  
 Level 02 Proposed RCP Sheet 1 of 2

SCALE 1:50 @ A1 DATE March 2017

DRAWING No. 15 230  
 9000-DRG-23MW-02030  
 DRAWN BY GS  
 REV C2

A & Q PARTNERSHIP (LONDON) LTD  
 THE LUX BUILDING, 2-4 HOXTON SQUARE, LONDON N1 6 NU  
 Tel: 020 7613 2244 Fax: 020 7613 2642 Email: london@aqp.co.uk  
 ARCHITECTURE DESIGN MASTERPLANNING INTERIORS