

2005 / 2454 / P  
*file copy*



OS  
SURVEY

© Crown copyright 2005. All rights reserved. Licence Number: 100020449. Survey Scale - 1:1250. Printed Scale - 1:1250.



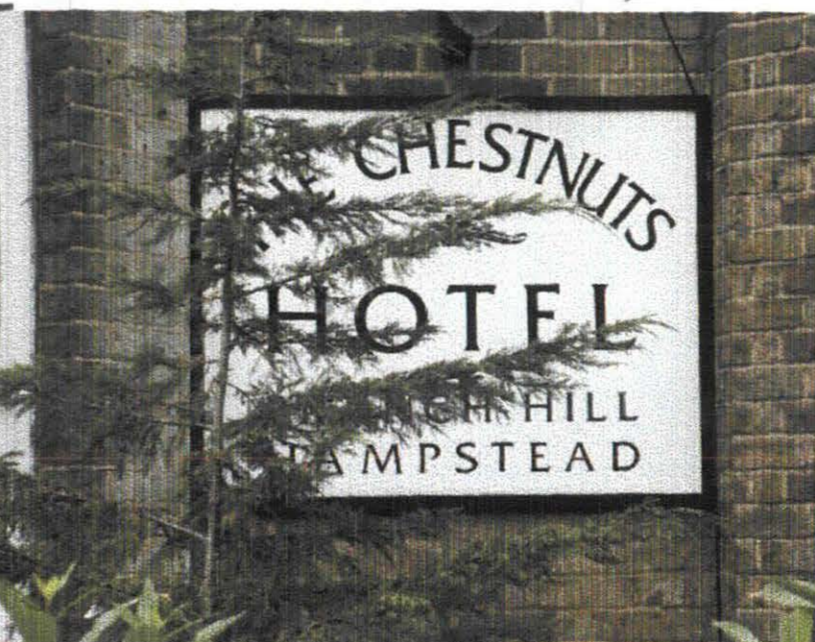
LONDON BOROUGH OF CROYDON  
TOWN CLERK

RECEIVED  
ON BEHALF OF

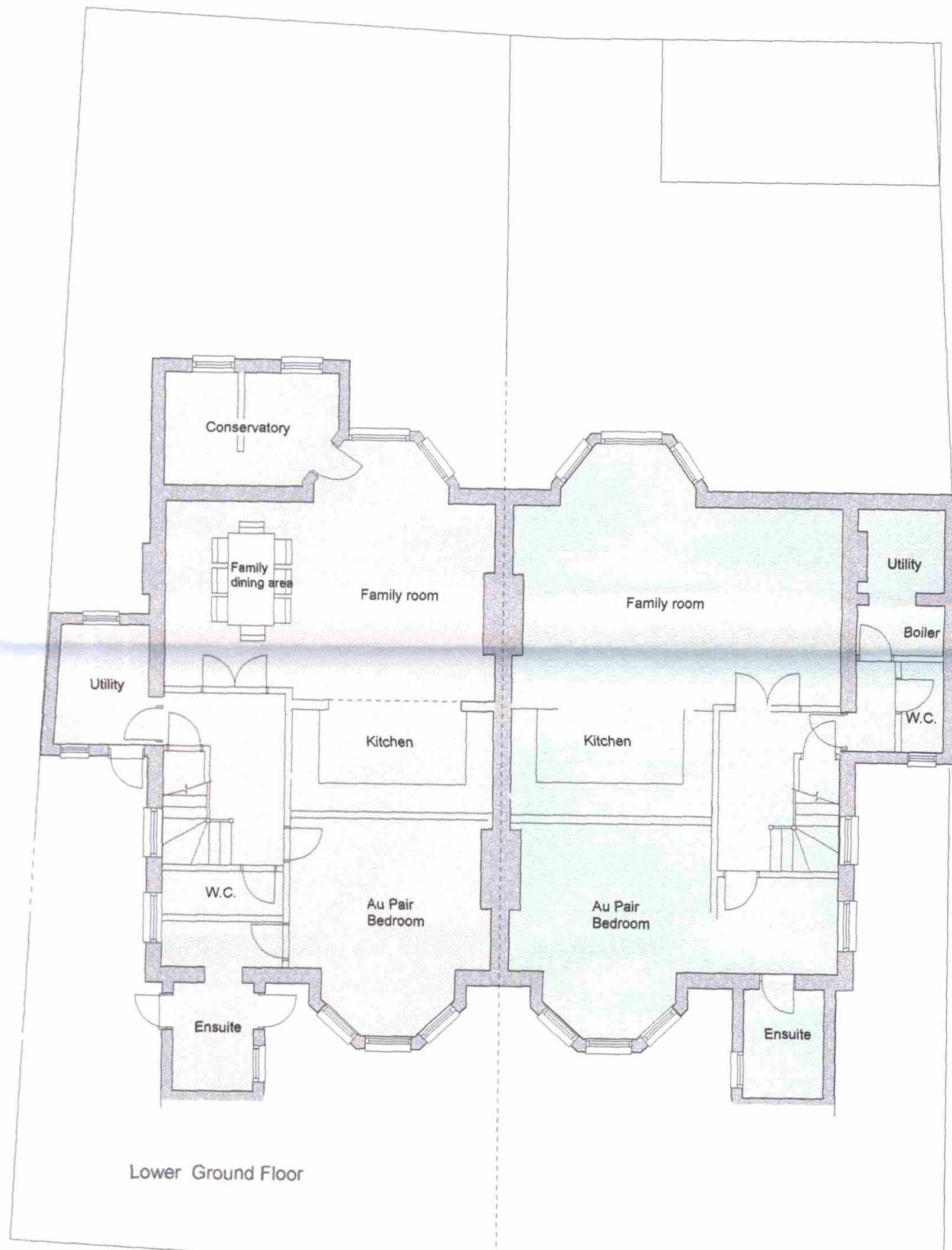
LONDON  
TOWN AND

15 AUG 2005

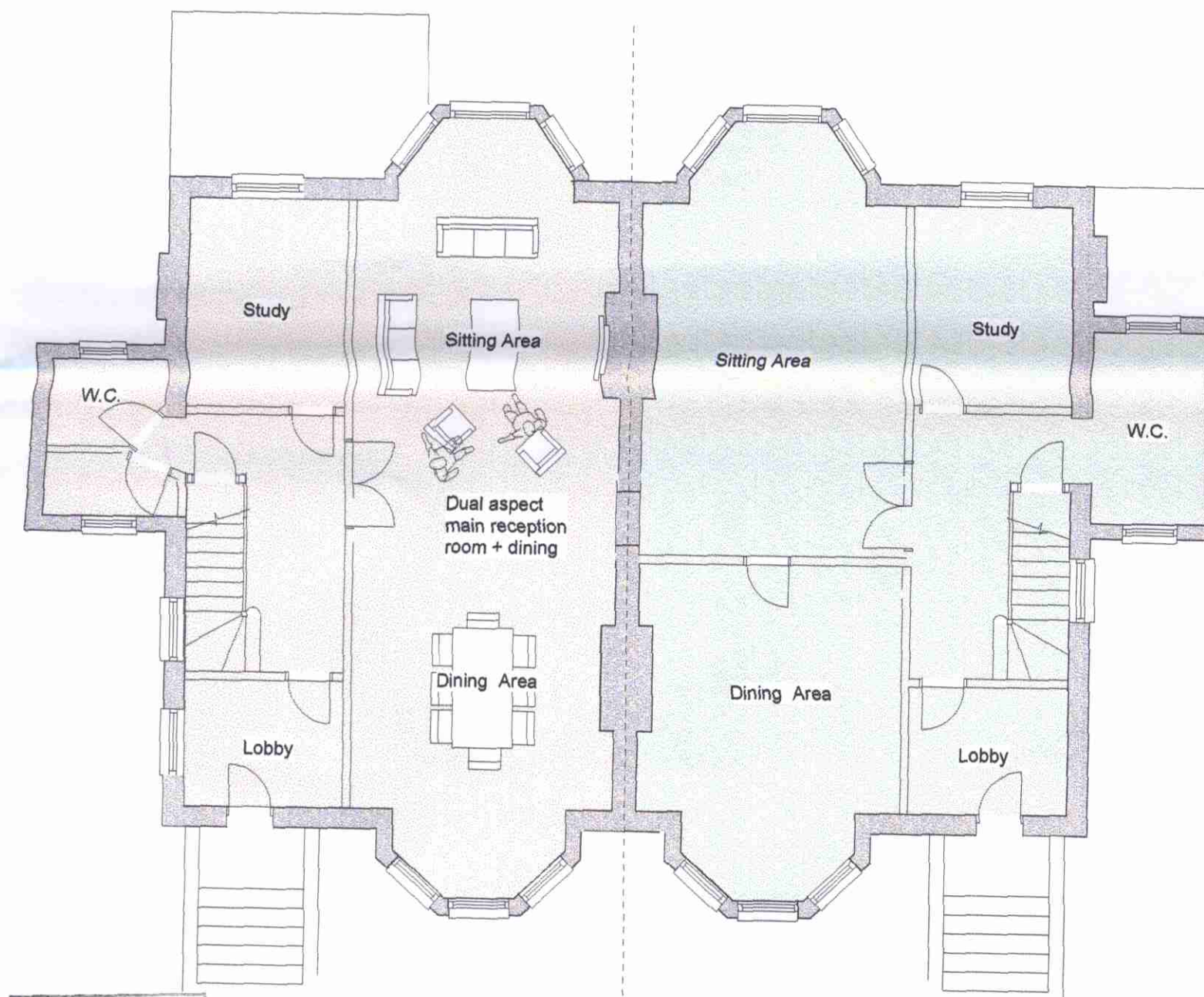
RECOMMENDATION / DECISION  
ON BEHALF OF THE COUNCIL



LONDON BOROUGH OF CAMDEN  
ENVIRONMENT DEPT.  
27 JUN 2005  
RECEIVED



THIS DRAWING HAS BEEN PRODUCED FROM INFORMATION GIVEN BY OTHERS.  
IT IS TO BE USED FOR IDENTIFICATION AND ILLUSTRATIVE PURPOSES ONLY.  
DO NOT SCALE FROM THIS DRAWING AND RELY UPON THE INFORMATION.



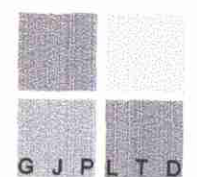
LONDON BOROUGH OF CAMDEN  
TOWN AND COUNCIL  
PLANNING ACTS  
15 AUG 2005  
RECOMMENDATION AGREED  
ON BEHALF OF THE COUNCIL

This application should be read in conjunction with the  
Planning Approval PWX 0202068/R1, dated 18 October 2002,  
which allows the change of use and conversion of the property  
into 5 self contained flats

1 & 2 BRANCH HILL LONDON NW3 7NA

Scale: 1: 100  
Date : June 2005

Drawing No. 06. 771.03  
PROPOSED DRAWING



GJPLTD  
ARCHITECTS

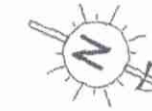
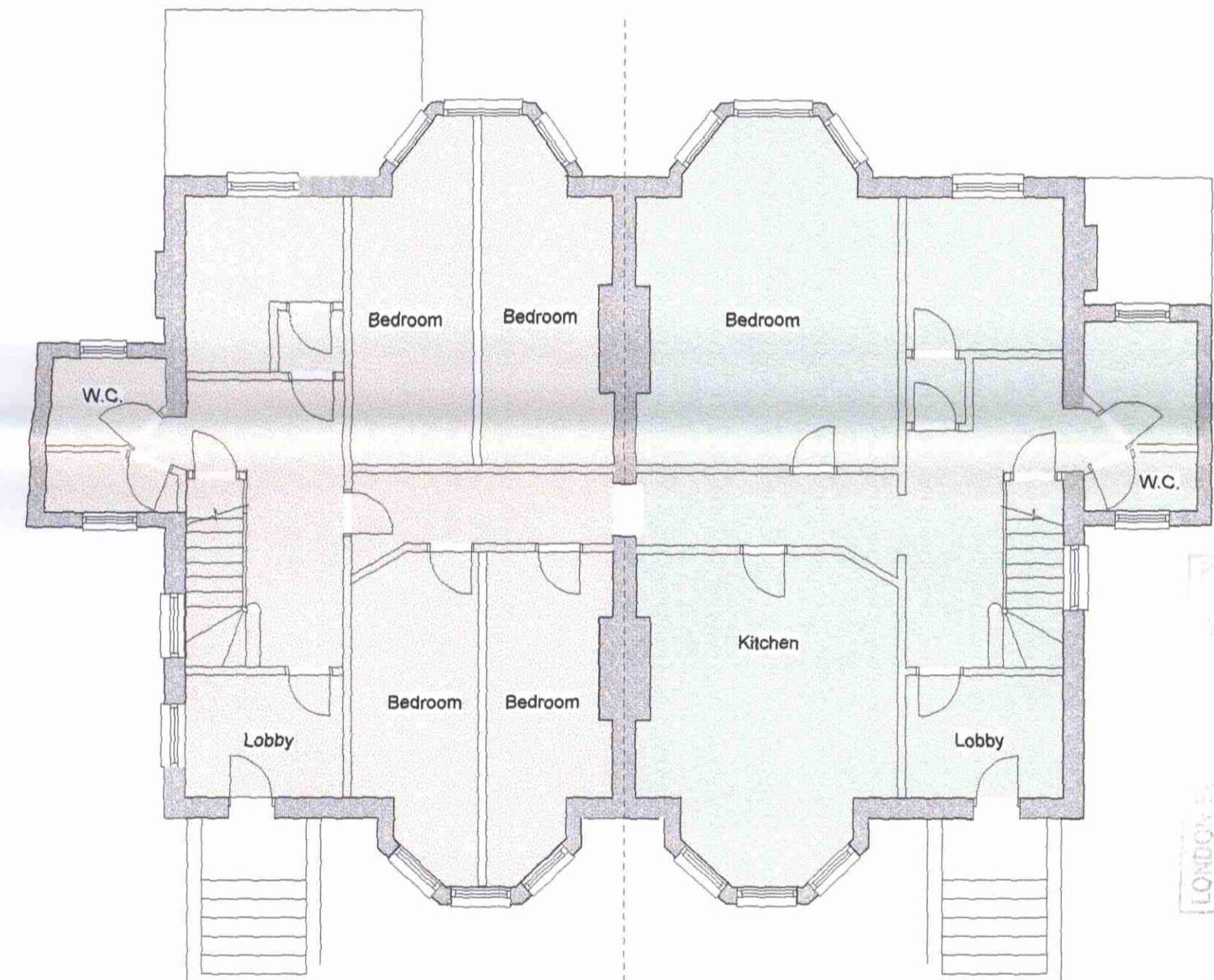
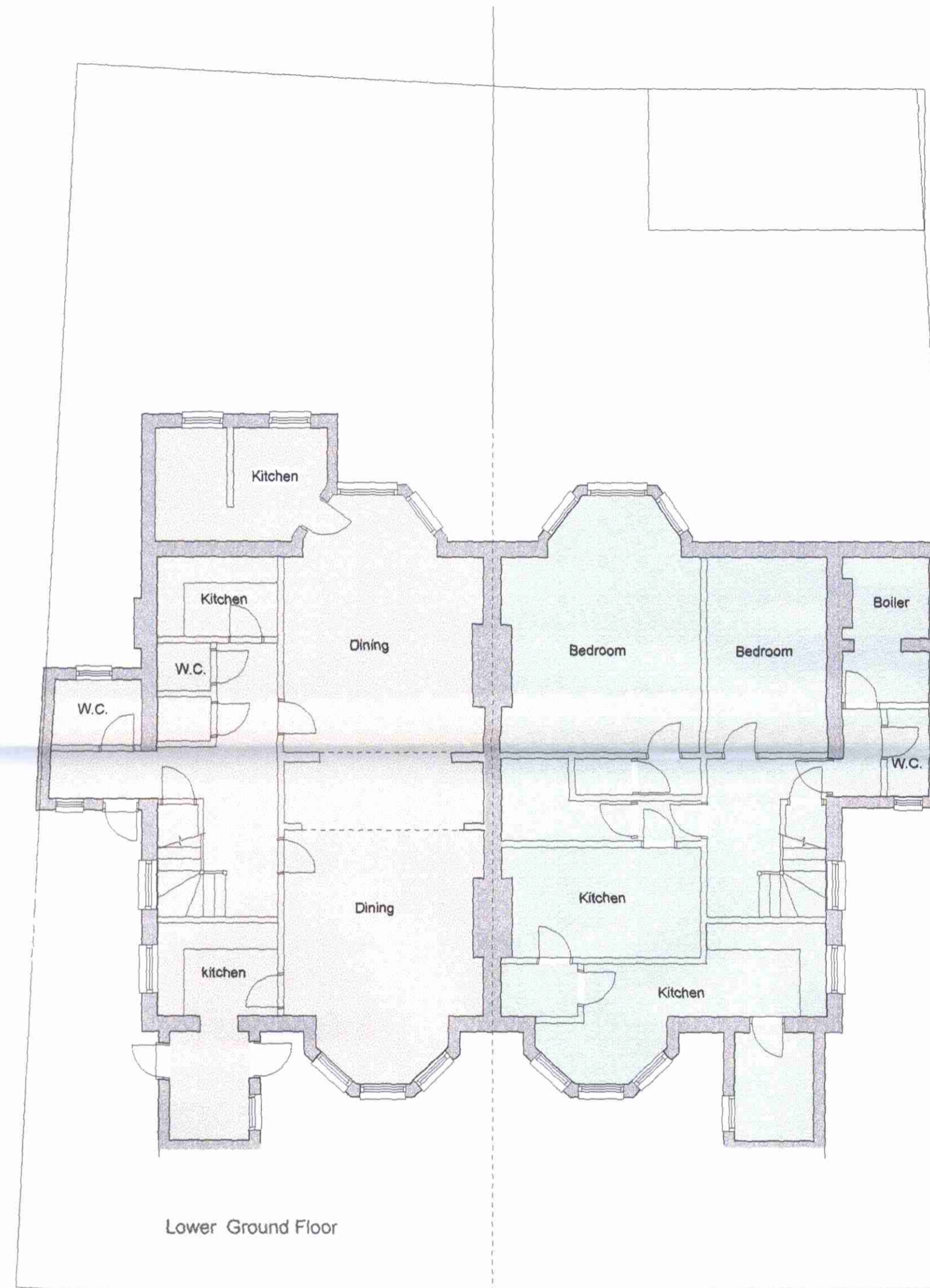
784 FINCHLEY ROAD  
TEMPLE FORTUNE  
NW11 LONDON 7TH

TEL 020 8458 4326  
FAX 020 8458 4322  
MOB 07721 598207

gjp @ architect99.fsnet.co.uk

PROPOSED USE AS 2 SINGLE FAMILY HOUSES - NO EXTERNAL ALTERATIONS

0001245410



THIS DRAWING HAS BEEN PRODUCED FROM INFORMATION GIVEN BY OTHERS.  
IT IS TO BE USED FOR IDENTIFICATION AND ILLUSTRATIVE PURPOSES ONLY.  
DO NOT SCALE FROM THIS DRAWING AND RELY UPON THE INFORMATION.

LONDON BOROUGH OF HAVINGHAM  
TOWN AND COUNCIL  
15 AUG 2005  
RECOMMENDATION AGREED  
ON BEHALF OF THE COUNCIL

**SUPERSEDED**  
27/6/08

This application should be read in conjunction with the  
Planning Approval PWX 0202068/R1, dated 18 October 2002,  
which allows the change of use and conversion of the property  
into 5 self contained flats

**1 & 2 BRANCH HILL LONDON NW3 7NA**

Scale: 1: 100  
Date : June 2005

Drawing No. 06. 771.01  
EXISTING DRAWING

**G J P LTD**  
ARCHITECTS  
764 FINCHLEY ROAD  
TEMPLE FORTUNE  
NW11 1LQ LONDON 7TH  
TEL 020 8458 4326  
FAX 020 8458 4322  
MOB 07721 598207  
gjp@architects.ltd.uk

THIS DRAWING HAS BEEN PRODUCED FROM INFORMATION GIVEN BY OTHERS.  
IT IS TO BE USED FOR IDENTIFICATION AND ILLUSTRATIVE PURPOSES ONLY.  
DO NOT SCALE FROM THIS DRAWING AND RELY UPON THE INFORMATION.



ARCHITECTS

784 FINCHLEY ROAD  
TEMPLE FORTUNE  
NW11 LONDON 7TH

TEL 020 8458 4326  
FAX 020 8458 4322  
MOB 07721 598207

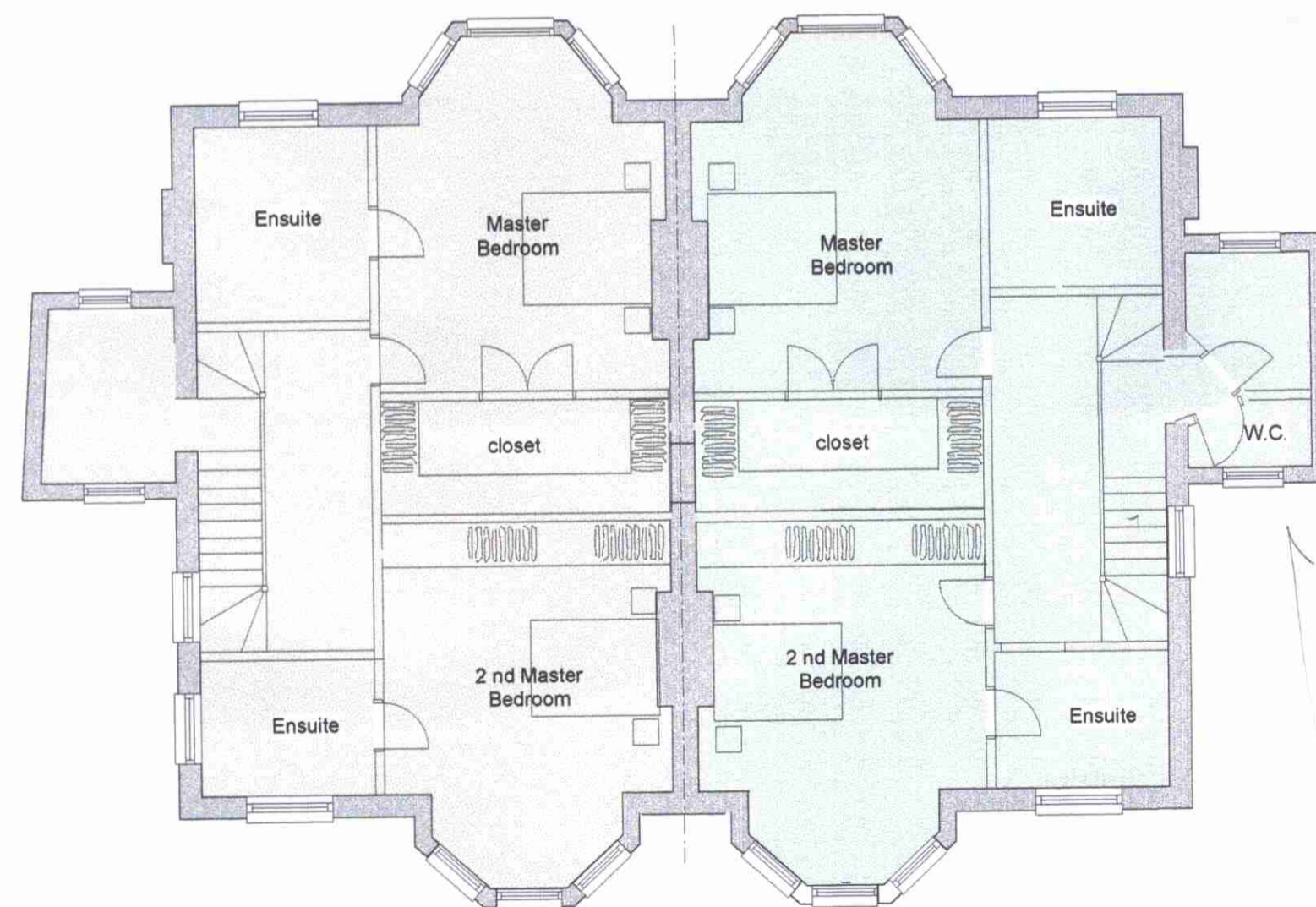
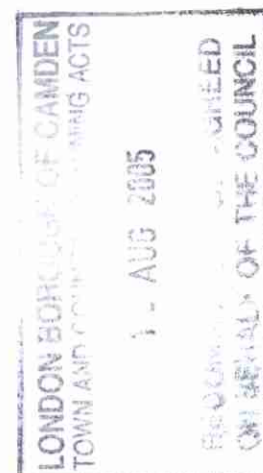
© architects ltd 2005

This application should be read in conjunction with the  
Planning Approval PWX 0202068/R1, dated 18 October 2002,  
which allows the change of use and conversion of the property  
into 5 self contained flats

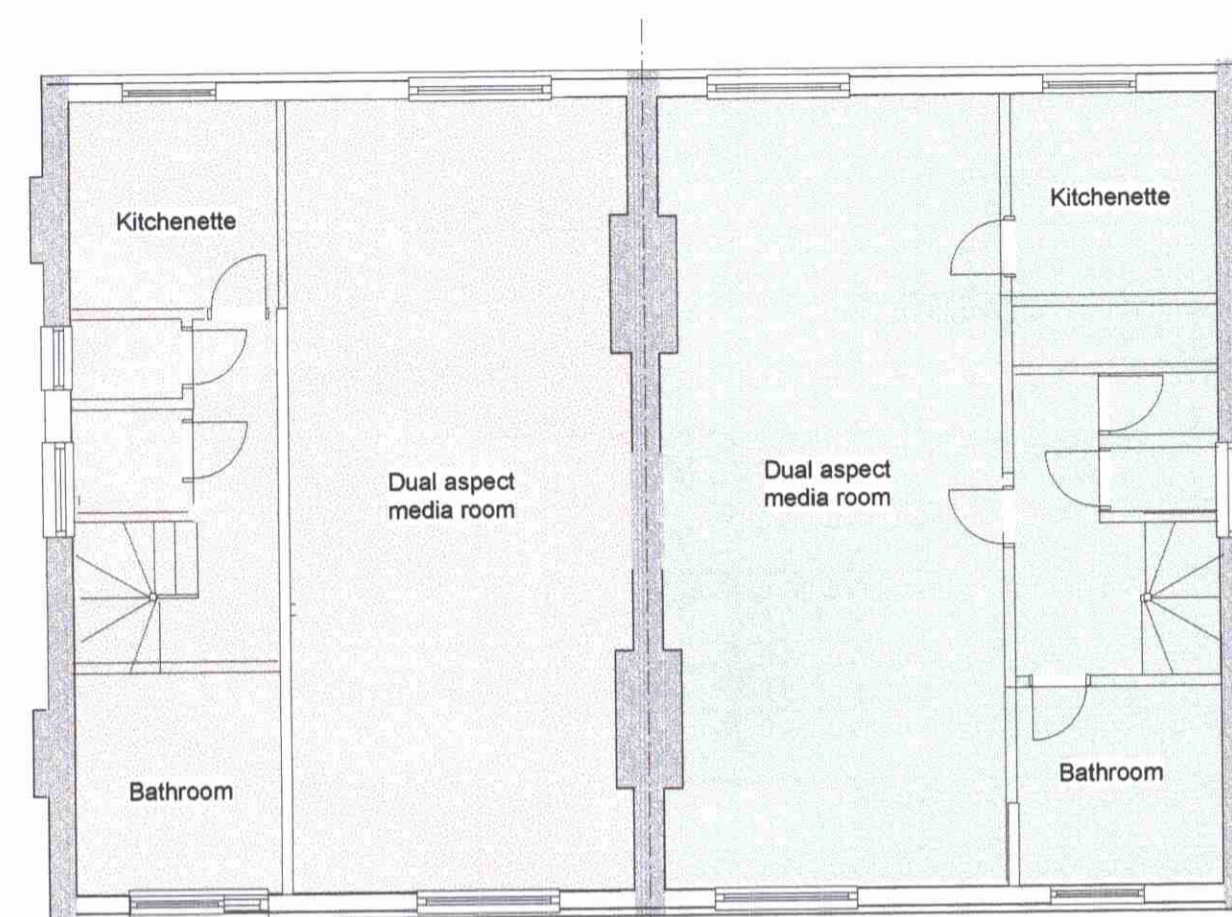
**1 & 2 BRANCH HILL LONDON NW3 7NA**

Scale: 1: 100 Drawing No. 06. 771.04  
Date : June 2005 PROPOSED DRAWING

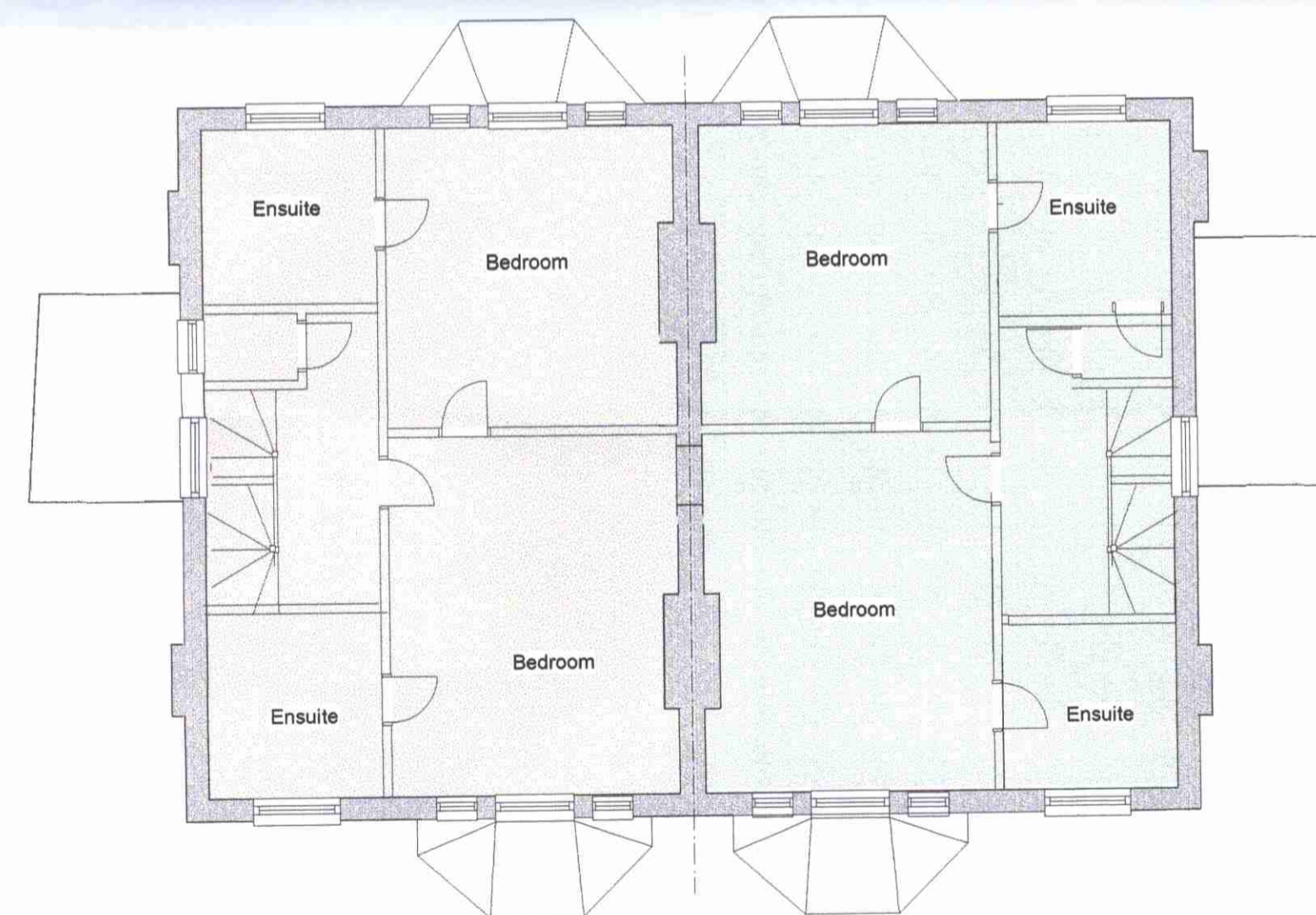
PROPOSED USE AS 2 SINGLE FAMILY HOUSES - NO EXTERNAL ALTERATIONS



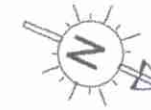
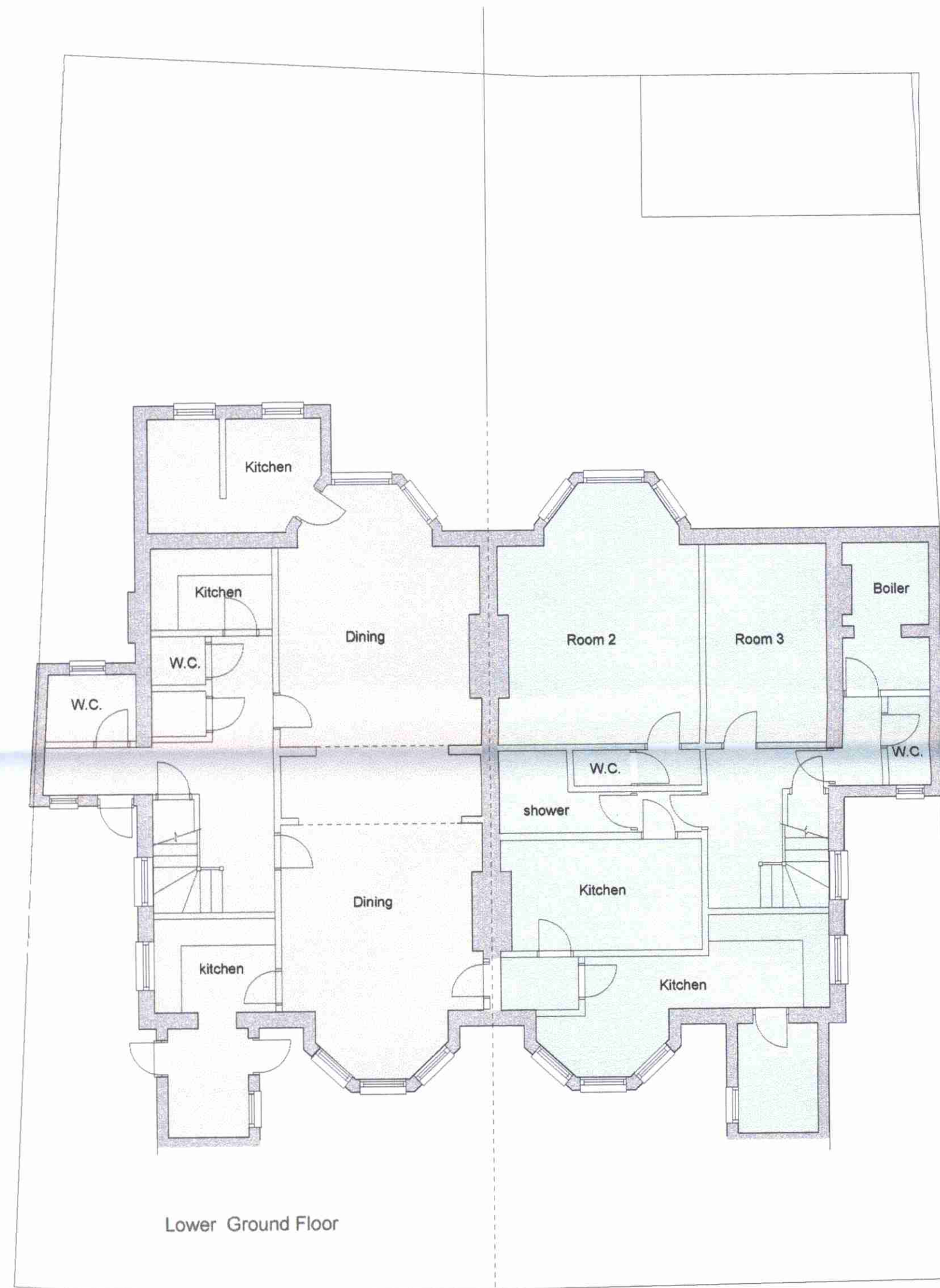
First Floor



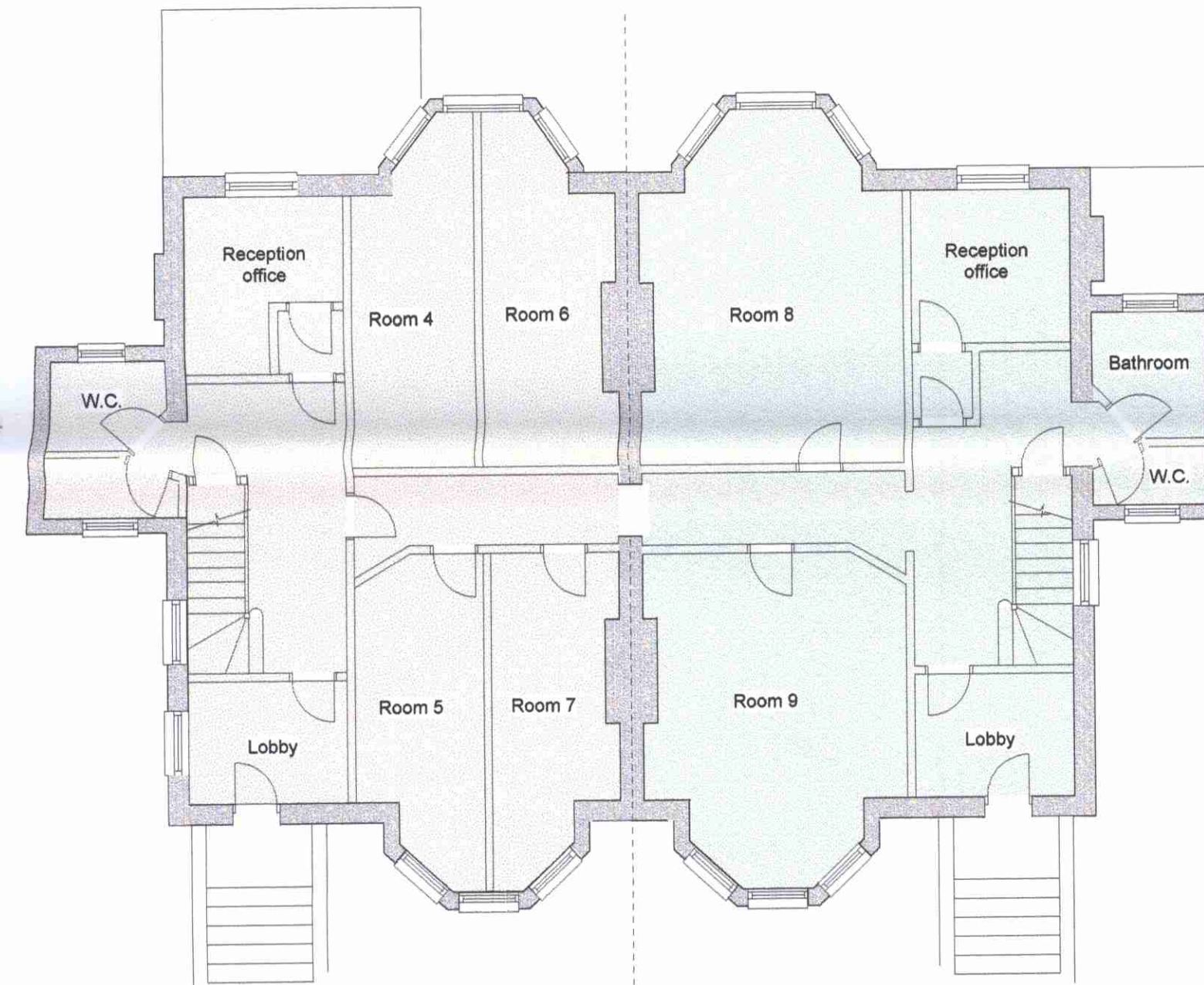
Third Floor



Second Floor



THIS DRAWING HAS BEEN PRODUCED FROM INFORMATION GIVEN BY OTHERS.  
IT IS TO BE USED FOR IDENTIFICATION AND ILLUSTRATIVE PURPOSES ONLY.  
DO NOT SCALE FROM THIS DRAWING AND RELY UPON THE INFORMATION.



RECOMMENDATION AGREED  
ON BEHALF OF THE COUNCIL

Ground Floor

Rev A Rooms identified June 2005

This application should be read in conjunction with the  
Planning Approval PWX 0202068/R1, dated 18 October 2002,  
which allows the change of use and conversion of the property  
into 5 self contained flats

**1 & 2 BRANCH HILL LONDON NW3 7NA**

Scale: 1: 100  
Date : June 2005

Drawing No. 06. 771.01 Rev A  
EXISTING DRAWING

2005/2454/R

**G.J.P.LTD**  
ARCHITECTS  
784 FINCHLEY ROAD  
TEMPLE FORTUNE  
NW11 LONDON 7TH  
TEL 020 8458 4326  
FAX 020 8458 4322  
MOB 07721 598207  
gjp@architects99.fsnet.co.uk



784 FINCHLEY ROAD  
TEMPLE FORTUNE  
NW11 LONDON 7TH  
TEL 020 8458 4326  
FAX 020 8458 4322  
MOB 07721 598207

gjp @ architectsgroup.co.uk

This application should be read in conjunction with the  
Planning Approval PWX 0202068/R1, dated 18 October 2002,  
which allows the change of use and conversion of the property  
into 5 self contained flats

### 1 & 2 BRANCH HILL LONDON NW3 7NA

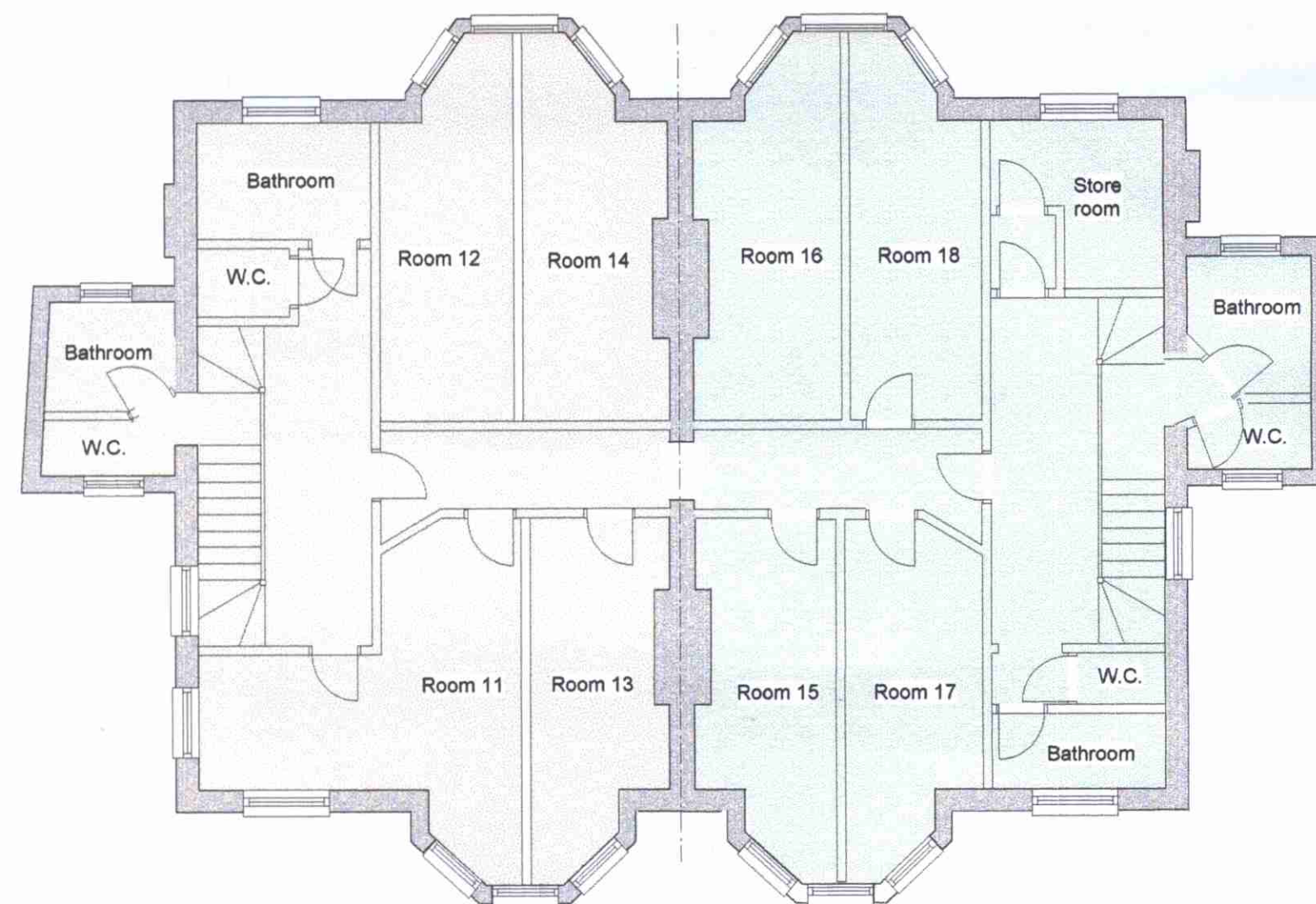
Scale: 1: 100 Drawing No. 06. 771.02 Rev A  
Date : June 2005 EXISTING DRAWING

THIS DRAWING HAS BEEN PRODUCED FROM INFORMATION GIVEN BY OTHERS.  
IT IS TO BE USED FOR IDENTIFICATION AND ILLUSTRATIVE PURPOSES ONLY.  
DO NOT SCALE FROM THIS DRAWING AND RELY UPON THE INFORMATION.

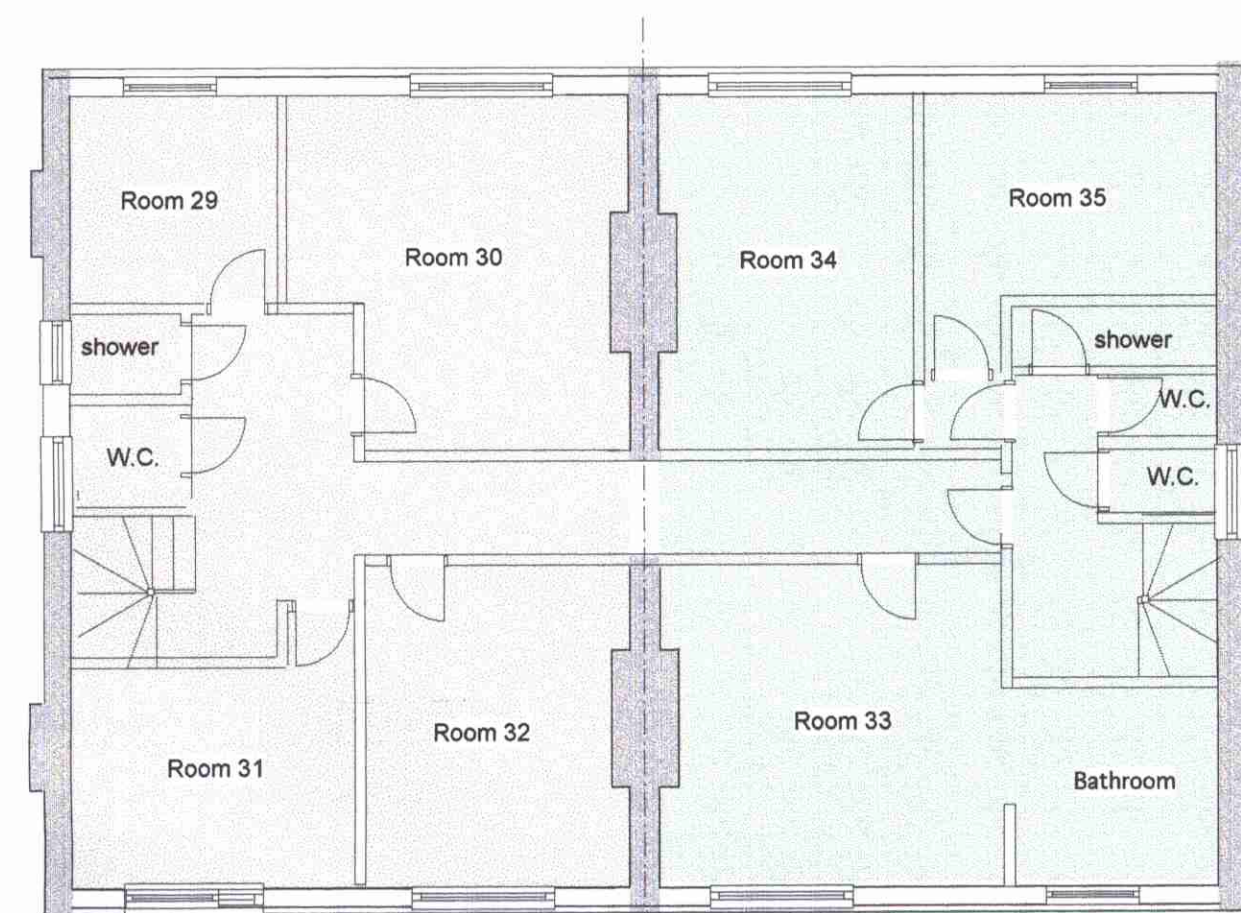
Rev A Rooms identified June 2005

RECOMMENDATION AGREED  
ON BEHALF OF THE COUNCIL.  
15 AUG 2005  
LONDON COUNCIL OF CAMDEN  
TOWN AND COUNCIL PLANNING ACTS

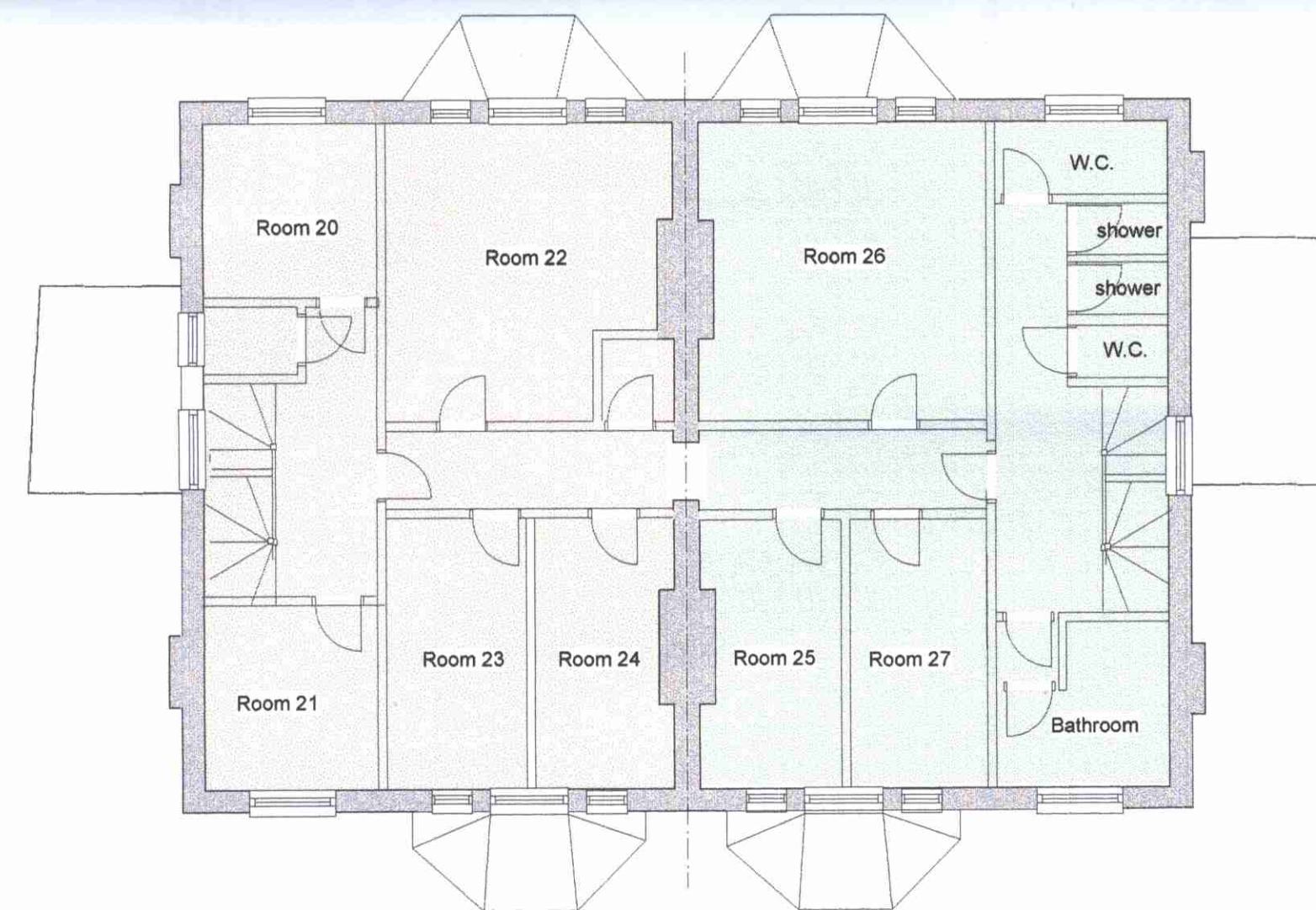
205 / 245 468



First Floor



Third Floor



Second Floor

**GJRLTD**  
**ARCHITECTS**  
 764 FINCHLEY ROAD  
 TEMPLE FORTUNE  
 NW11 7TH  
 TEL 020 8458 4326  
 FAX 020 8458 4322  
 MOB 07721 598207  
 gjo@gjarchitects.co.uk

This application should be read in conjunction with the Planning Approval PWX 0202068/R1, dated 18 October 2002, which allows the change of use and conversion of the property into 5 self contained flats

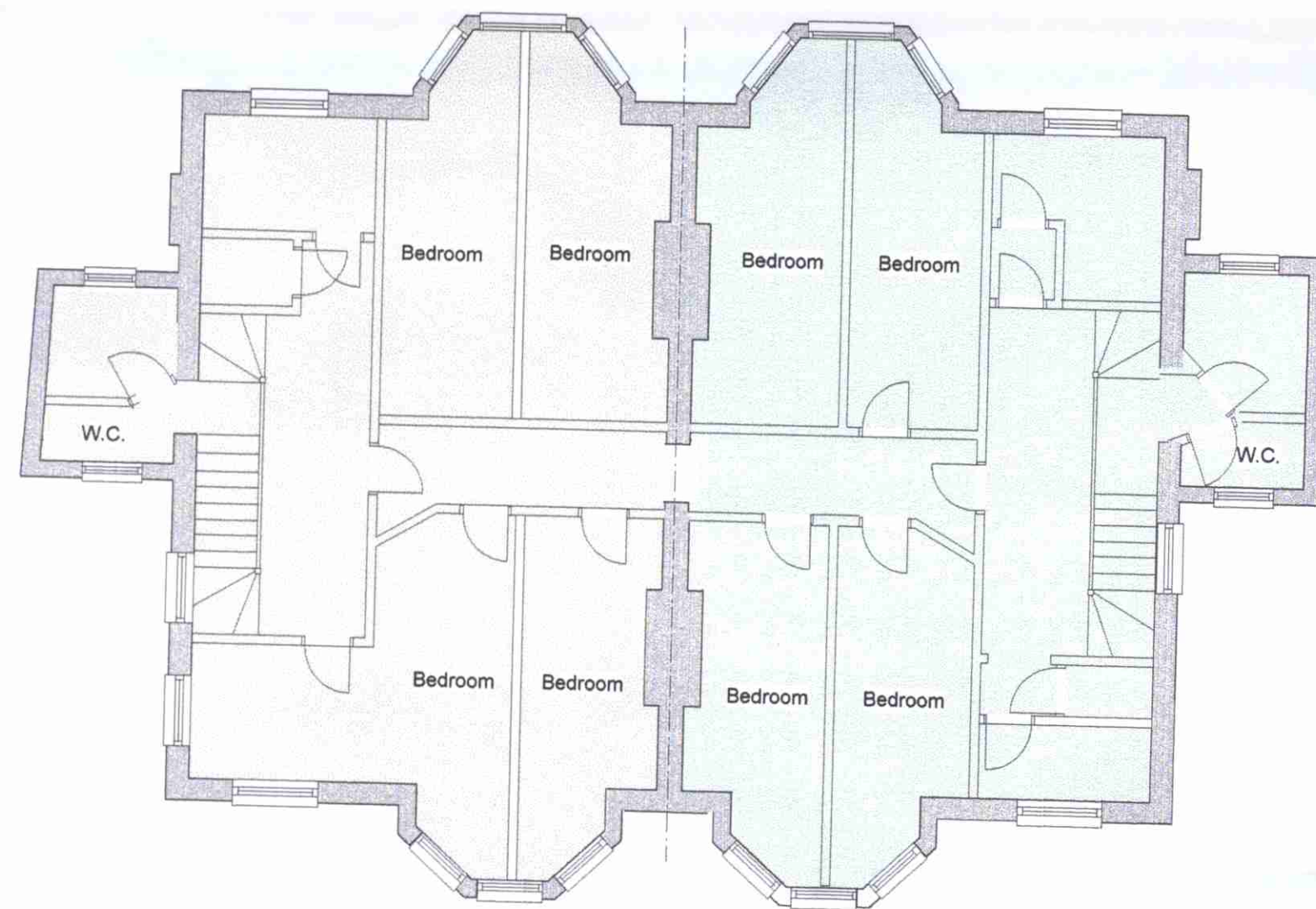
**1 & 2 BRANCH HILL LONDON NW3 7NA**

Scale: 1: 100  
 Date : June 2005  
 Drawing No. 06. 771.02  
 EXISTING DRAWING

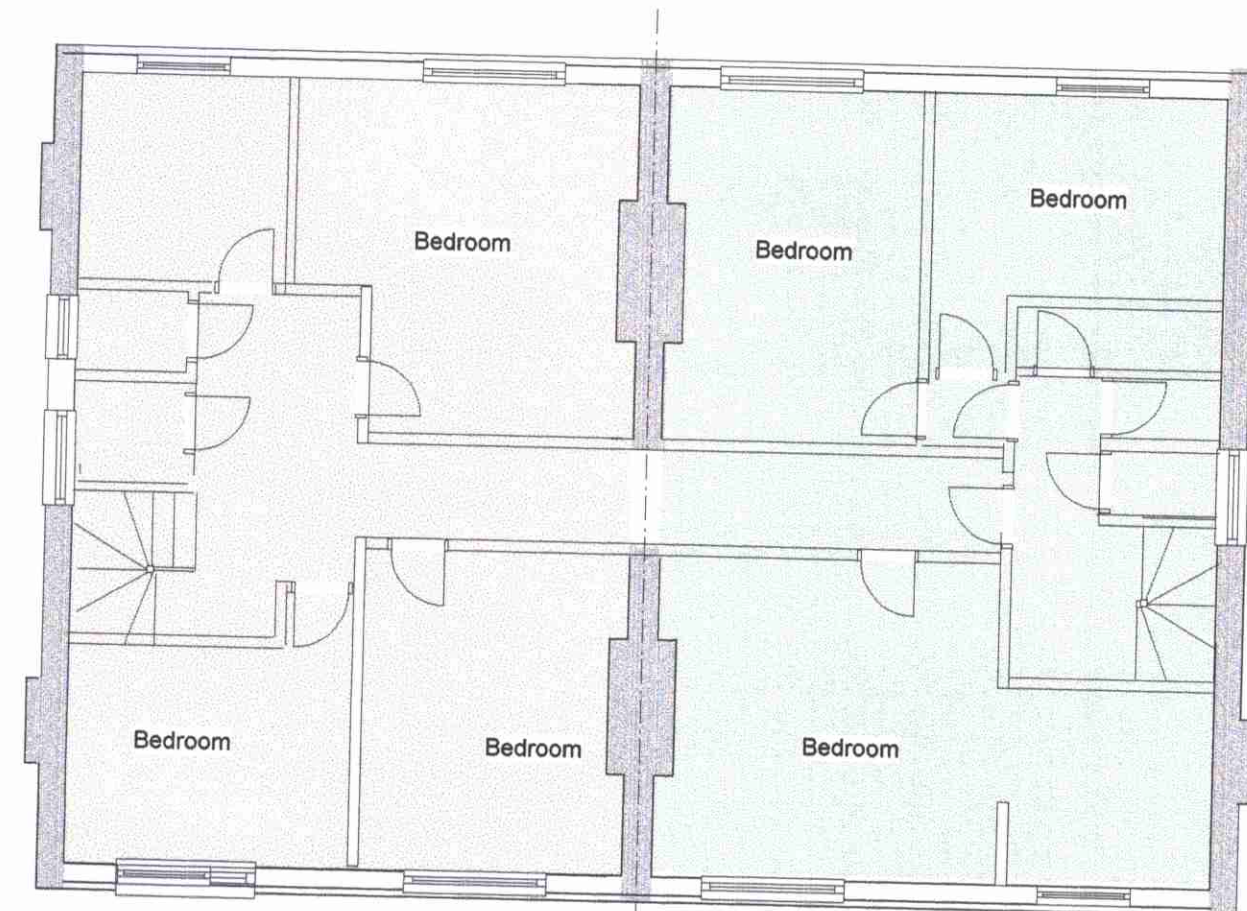
THIS DRAWING HAS BEEN PRODUCED FROM INFORMATION GIVEN BY OTHERS.  
 IT IS TO BE USED FOR IDENTIFICATION AND ILLUSTRATIVE PURPOSES ONLY.  
 DO NOT SCALE FROM THIS DRAWING AND RELY UPON THE INFORMATION.

LONDON BOROUGH OF CAMDEN  
 PLANNING ACTS  
 10 AUG 2005  
 RECOMMENDED BY THE LONDON  
 ON BEHALF OF THE LONDON

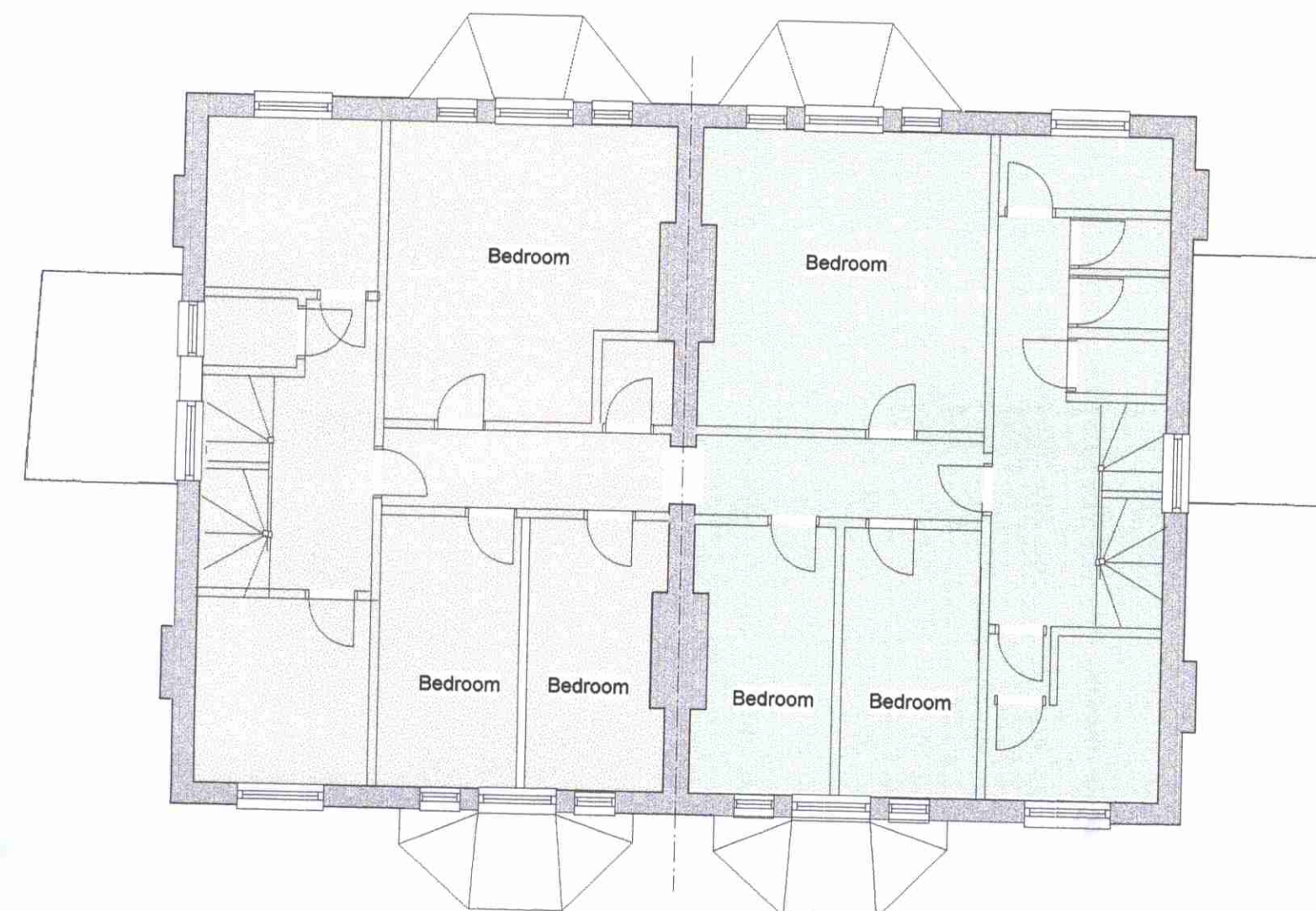
**SUPERSEDED**  
 27/6/08



First Floor



Third Floor



Second Floor