

NOTE:
GRIDLINES ARE SET OUT ON EXISITING BUILDING
STRUCTURE LINES. GREEN GRIDLINES OVERLAY THE
HISTORICAL ADAMS KARA TAYLOR STRUCTURAL GRID.

Existing plant enclosure screen to be
retained in its existing location

Existing modern glass lantern to be
retained and modified to
accommodate the new access to roof

Existing aluminium roof covering
to be maintained

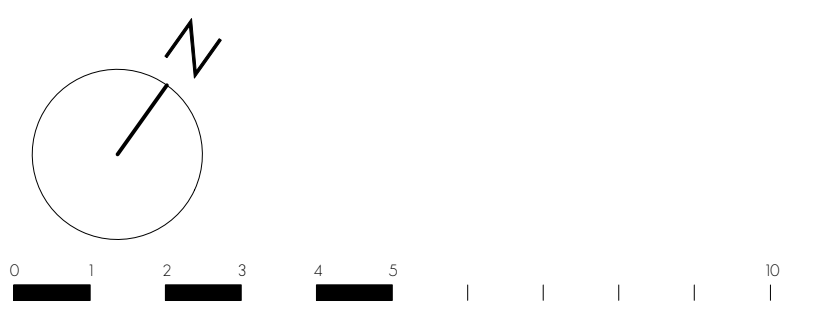
Existing glass roof and steel
supporting structure to be retained

EARLHAM STREET
(Below)




NEAL STREET
(Below)

SHELTON STREET
(Below)

EXISTING ROOF PLAN



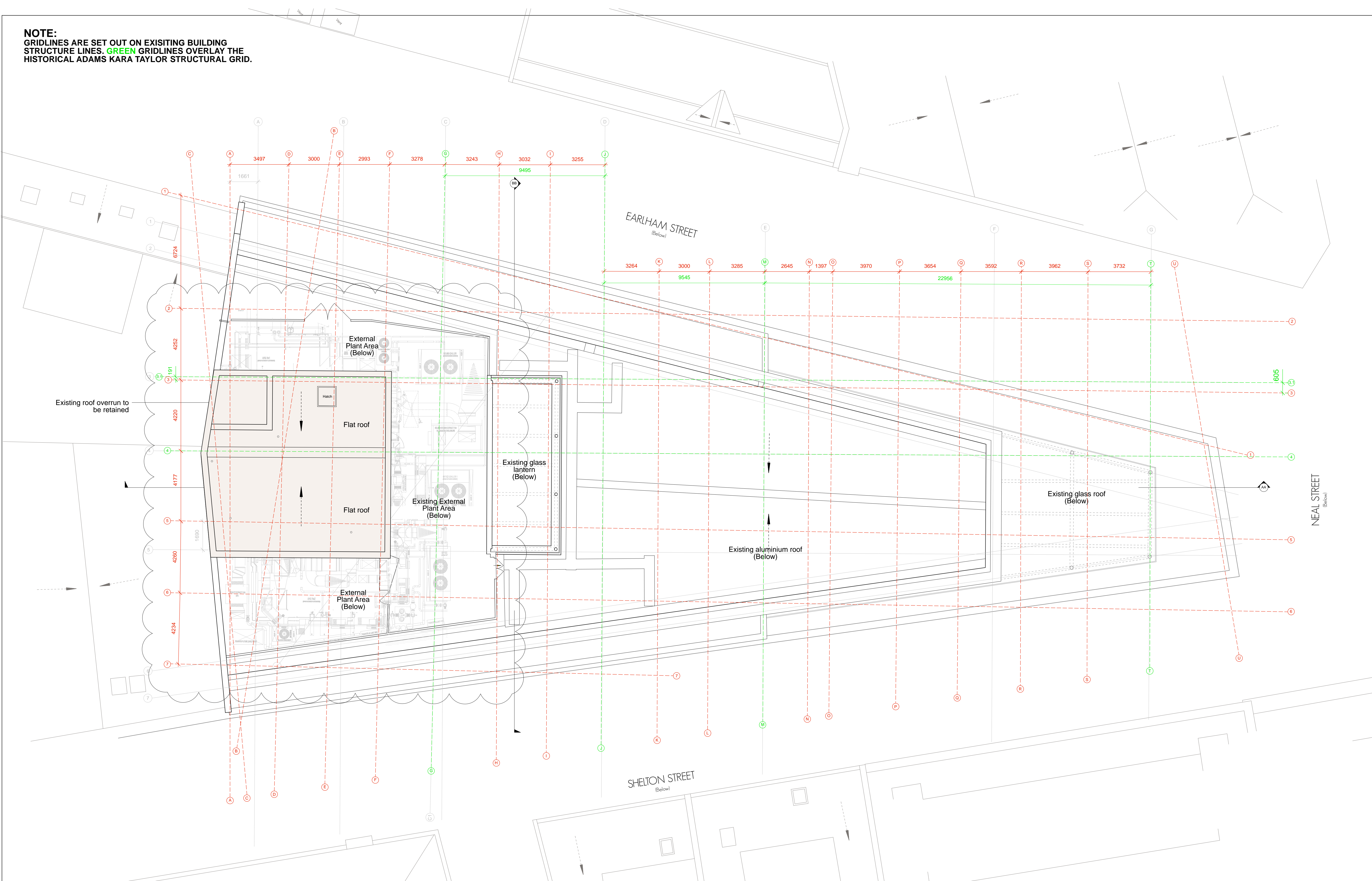
PLANNING

<table><tr><td></td><td></td><td></td></tr><tr><td>A</td><td>22.03.17</td><td>Existing roof plant equipment added</td></tr><tr><td>rev.</td><td>date</td><td>notes</td></tr></table>				A	22.03.17	Existing roof plant equipment added	rev.	date	notes	<table><tr><td colspan="3">PROJECT SEVEN DIALS WAREHOUSE LONDON WC2</td></tr><tr><td colspan="3">CLIENT PEC NEALE LTD</td></tr><tr><td>SCALE 1:100 @ A1</td><td>DATE MAR 17</td><td>DWG BY SF / DS</td></tr><tr><td>CHKD.</td><td>DWG NO. 527-EX.09</td><td>REV. A</td></tr></table>	PROJECT SEVEN DIALS WAREHOUSE LONDON WC2			CLIENT PEC NEALE LTD			SCALE 1:100 @ A1	DATE MAR 17	DWG BY SF / DS	CHKD.	DWG NO. 527-EX.09	REV. A	<table><tr><td colspan="3">DRAWING TITLE EXISTING ROOF PLAN</td></tr><tr><td colspan="3"> architecture & interior design</td></tr><tr><td colspan="3">T: 020 7549 2133 F: 020 7549 2144 E: info@gpadlondonltd.com W: www.gpadlondonltd.com</td></tr><tr><td colspan="3">Unit 1 9a Dollington Street Clerkenwell London EC1V 0BQ</td></tr></table>	DRAWING TITLE EXISTING ROOF PLAN			 architecture & interior design			T: 020 7549 2133 F: 020 7549 2144 E: info@gpadlondonltd.com W: www.gpadlondonltd.com			Unit 1 9a Dollington Street Clerkenwell London EC1V 0BQ		
A	22.03.17	Existing roof plant equipment added																																	
rev.	date	notes																																	
PROJECT SEVEN DIALS WAREHOUSE LONDON WC2																																			
CLIENT PEC NEALE LTD																																			
SCALE 1:100 @ A1	DATE MAR 17	DWG BY SF / DS																																	
CHKD.	DWG NO. 527-EX.09	REV. A																																	
DRAWING TITLE EXISTING ROOF PLAN																																			
 architecture & interior design																																			
T: 020 7549 2133 F: 020 7549 2144 E: info@gpadlondonltd.com W: www.gpadlondonltd.com																																			
Unit 1 9a Dollington Street Clerkenwell London EC1V 0BQ																																			

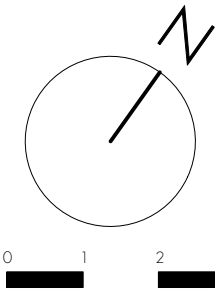
This drawing is the copyright of **gpap london ltd**. Not to be reproduced, retained or
disclosed to any unauthorised person without written permission.
Do not scale of this drawing. All indicated dimensions to be checked and verified on site
by the contractor before commencement of any fabrication drawings or work whatsoever
on site. Report any discrepancies to the Architect immediately.
Drawings to be read in conjunction with relevant drawings and specification.

© gpap london ltd.


NOTE:
GRIDLINES ARE SET OUT ON EXISITING BUILDING
STRUCTURE LINES. GREEN GRIDLINES OVERLAY THE
HISTORICAL ADAMS KARA TAYLOR STRUCTURAL GRID.



EXISTING ROOF OVERRUN PLAN



PLANNING

			PROJECT					DRAWING TITLE		
A			SEVEN DIALS WAREHOUSE LONDON WC2					EXISTING ROOF OVERRUN PLAN		
22.03.17										
Existing roof plant equipment added										
rev.			CLIENT					<div> architecture & interior design</div> <div>T: 020 7549 2133 F: 020 7549 2144 E: info@gpadlondonltd.com W: www.gpadlondonltd.com</div> <div>Unit 1 9a Dallington Street Clerkenwell London EC1V 0BQ</div>		
date			PEC NEALE LTD							
notes			SCALE							
			1:100 @ A1							
This drawing is the copyright of gpad london ltd . Not to be reproduced, retained or disclosed to any unauthorised person without written permission. Do not scale of this drawing. All indicated dimensions to be checked and verified on site by the contractor before commencement of any fabrication drawings or work whatsoever on site. Report any discrepancies to the Architect immediately. Drawings to be read in conjunction with relevant drawings and specification.			DATE		MAR 17		DWG BY		SF / DS	
			CHKD.		DWG NO.		527-EX.10		REV.	
© gpad london ltd.									A	



EXISTING EARLHAM STREET ELEVATION



PLANNING

© gpad london ltd.

			PROJECT				DRAWING TITLE				
			SEVEN DIALS WAREHOUSE LONDON WC2				EXISTING EARLHAM STREET ELEVATION				
			CLIENT				<div><div>gpad</div><div>architecture & interior design</div></div> <div>T: 020 7549 2133 F: 020 7549 2144 E: info@gpadlondonltd.com W: www.gpadlondonltd.com</div> <div>Unit 1 9a Dallington Street Clerkenwell London EC1V 0BQ</div>				
			PEC NEALE LTD								
SCALE		1:100 @ A1	DATE	Oct 16	DWG BY	SF / DS					REV.
CHKD.			DWG NO.		527-EX.11						
rev.	date	notes									
© gpad london ltd.											

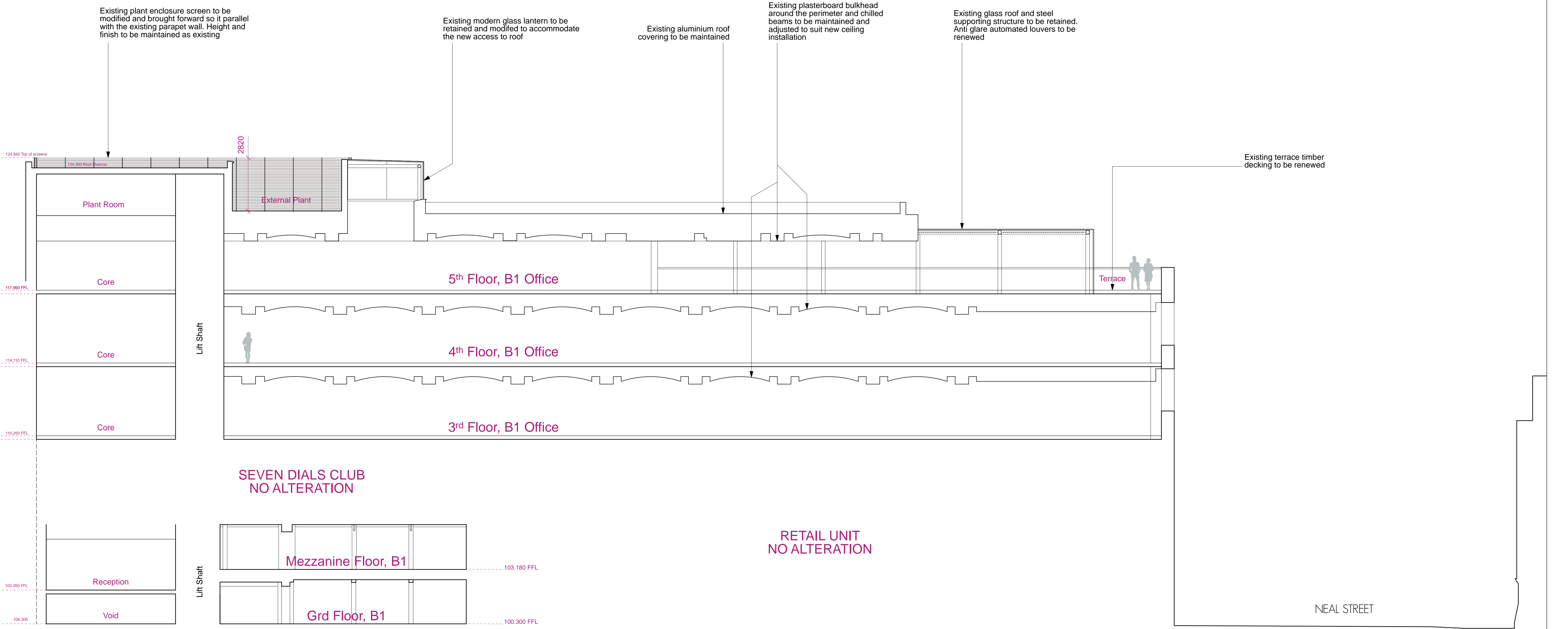


EXISTING SHELTON STREET ELEVATION

012345|||||10

PLANNING

			PROJECT SEVEN DIALS WAREHOUSE LONDON WC2				DRAWING TITLE EXISTING SHELTON STREET ELEVATION	
			CLIENT PEC NEALE LTD				<div><div>gpad</div><div>architecture & interior design</div></div> <div>T: 020 7549 2133 F: 020 7549 2144 E: info@gpadlondonltd.com W: www.gpadlondonltd.com</div> <div>Unit 1 9a Dallington Street Clerkenwell London EC1V 0BQ</div>	
rev.	date	notes	SCALE 1:100 @ A1	DATE Oct 16	DWG BY SF / DS	REV.		
This drawing is the copyright of gpad london ltd . Not to be reproduced, retained or disclosed to any unauthorised person either wholly or in part without written permission. Do not scale of this drawing. All indicated dimensions to be checked and verified on site by the contractor before commencement of any fabrication drawings or work whatsoever on site. Report any discrepancies to the Architect immediately. Drawings to be read in conjunction with relevant drawings and specification.			CHKD.	DWG NO. 527-EX.12				
			© gpad london ltd.					



EXISTING SECTION AA

01234510

PLANNING

PROJECT

SEVEN DIALS WAREHOUSE
LONDON WC2

CLIENT

PEC NEALE LTD

SCALE

1:100 @ A1

DATE

Oct 16

DWG BY

SF / DS

REV.

CHKD.

DWG NO.

527-EX.13

rev.

date

notes

This drawing is the copyright of **gpad london ltd**. Not to be reproduced, retained or disclosed to any unauthorised person either wholly or in part without written permission. Do not scale of this drawing. All indicated dimensions to be checked and verified on site by the contractor before commencement of any fabrication drawings or work whatsoever on site. Report any discrepancies to the Architect immediately. Drawings to be read in conjunction with relevant drawings and specification.

© gpad london ltd.

DRAWING TITLE

EXISTING SECTION AA

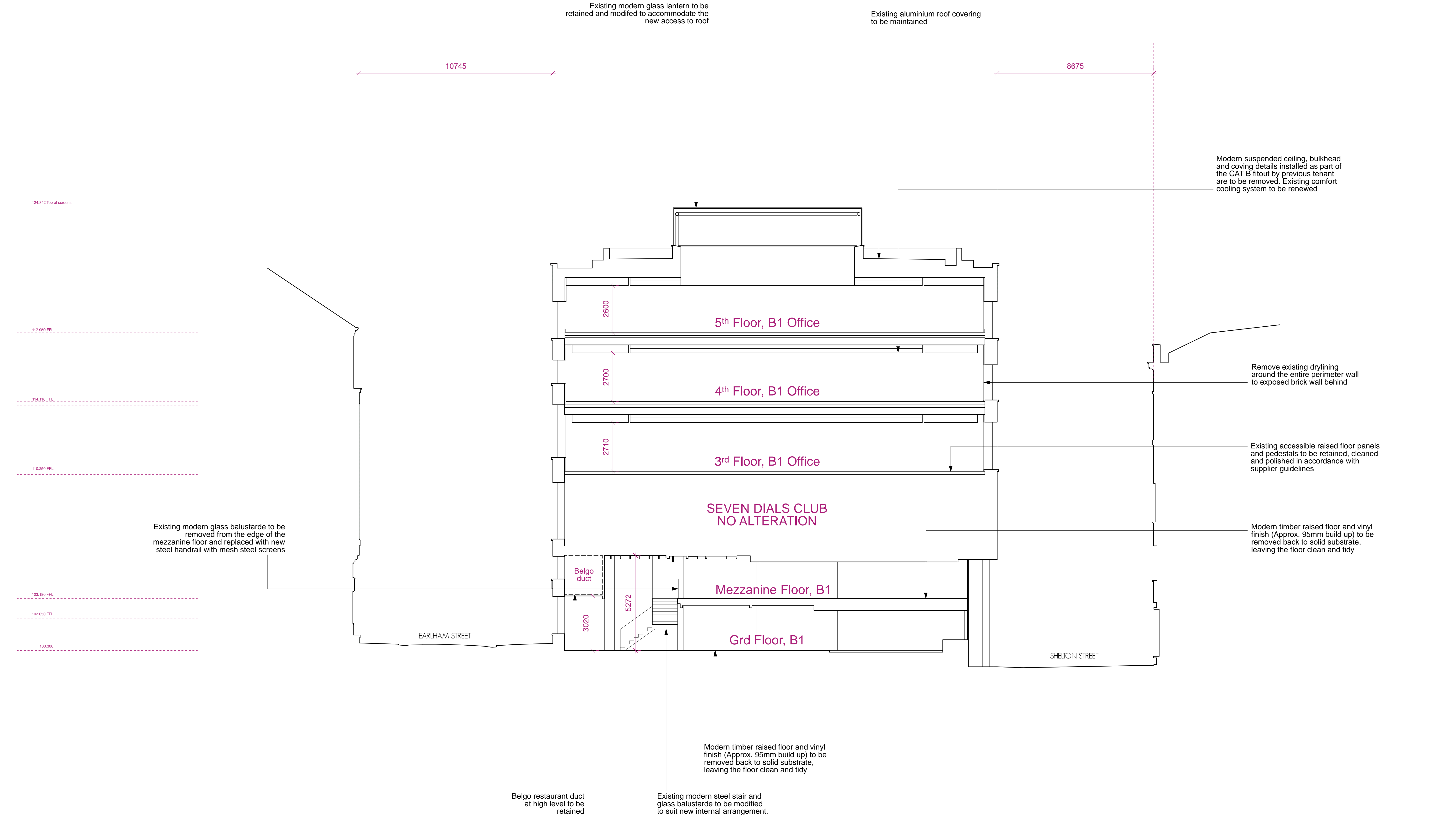
gpad

architecture & interior design

T: 020 7549 2133
F: 020 7549 2144
E: info@gpadlondonltd.com
W: www.gpadlondonltd.com

Unit 1
9a Dallington Street
Clerkenwell
London EC1V 0BQ

PLANNING



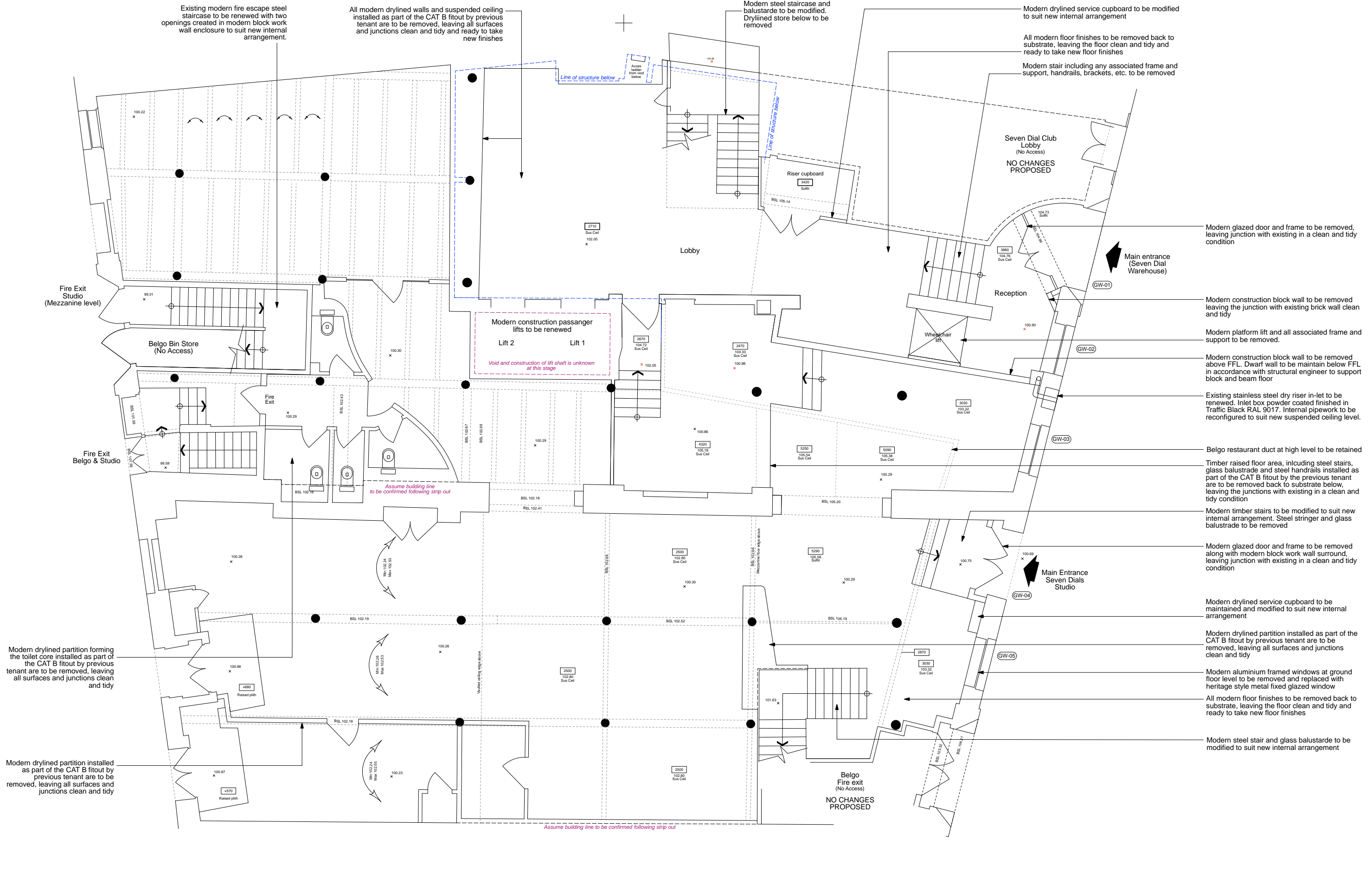
EXISTING SECTION BB



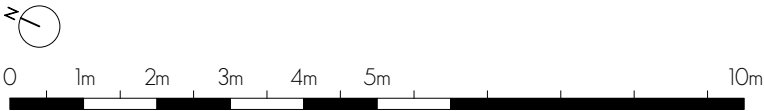
PLANNING

© gpad london ltd.


PROJECT SEVEN DIALS WAREHOUSE LONDON WC2					DRAWING TITLE EXISTING SECTION BB	
CLIENT PEC NEALE LTD					<div>gpad</div> architecture & interior design <div>T: 020 7549 2133 F: 020 7549 2144 E: info@gpadlondonltd.com W: www.gpadlondonltd.com</div> <div>Unit 1 9a Dallington Street Clerkenwell London EC1V 0BQ</div>	
SCALE 1:100 @ A1		DATE Oct 16	DWG BY SF / DS			
CHKD.		DWG NO. 527-EX.14				
		REV.				



EXISTING GROUND FLOOR PLAN
TO BE READ IN CONJUNCTION WITH DRAWING 527-EX.04



PLANNING

			PROJECT SEVEN DIALS WAREHOUSE LONDON WC2					DRAWING TITLE EXISTING GROUND FLOOR PLAN	
			CLIENT PEC NEALE LTD					<div> architecture & interior design</div> <div>T: 020 7549 2133 F: 020 7549 2144 E: info@gpadlondonltd.com W: www.gpadlondonltd.com</div> <div>Unit 1 9a Dollington Street Clerkenwell London EC1V 0BQ</div>	
			SCALE 1:50 @ A1						
			DATE Oct 2016						
			DWG BY PG						
			REV.						
			CHKD. DS						
			DWG NO. 527-EX.15						
© gpad London Ltd.									



EXISTING EARLHAM ENTRANCE
CLOSE UP ELEVATION
(Scale 1:50)

- KEY
- 1. Original brick facade.
 - 2. Black painted brick facade.
 - 3. Glass door.
 - 4. Stone plinth, painted black.
 - 5. Stone surround, painted black.
 - 6. Double glazed aluminium replacement 'modern' windows.
 - 7. Window box planter.
 - 8. Dry riser inlet

Black painted acrylic signboard fixed to existing facade.
with white vinyl letters

Aluminium signboard fixed to existing facade.
with black vinyl letters



SEVEN DIALS WAREHOUSE
ENTRANCE GLASS DOOR



KEY ELEVATION
(Scale 1:200)




EARLHAM STREET FACADE



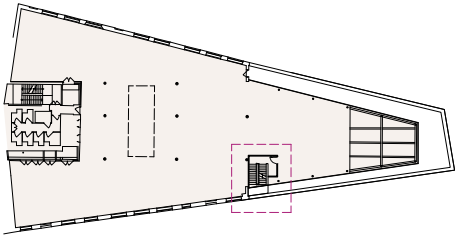
SEVEN DIALS STUDIO
ENTRANCE GLASS DOOR



PLANNING

			PROJECT SEVEN DIALS WAREHOUSE LONDON WC2				DRAWING TITLE EARLHAM STREET ENTRANCE FACADE ALTERATIONS			
			CLIENT PEC NEALE LTD				<div> architecture & interior design</div> <div>T: 020 7549 2133 F: 020 7549 2144 E: info@gpadlondonltd.com W: www.gpadlondonltd.com</div> <div>Unit 1 9a Dollington Street Clerkenwell London EC1V 0BQ</div>			
			SCALE 1:50 & 1:20 @ A1 DATE Oct 16 DWG BY SF / DS REV.							
			CHGCD. DWG NO. 527-EX.17							
© gpad london ltd.										

rev.	date	notes
This drawing is the copyright of gpad london ltd . Not to be reproduced, retained or disclosed to any unauthorised person either wholly or in part without written permission. Do not scale off this drawing. All indicated dimensions to be checked and verified on site by the contractor before commencement of any fabrication drawings or work whatsoever on site. Report any discrepancies to the Architect immediately. Drawings to be used in conjunction with relevant drawings and specifications.		



KEY PLAN

FIFTH FLOOR PLAN

All modern drylining partitions installed as part of the CAT B fitout by previous tenant are to be removed, leaving all surfaces and junctions clean and tidy

FOURTH FLOOR PLAN

Existing escape stair to be retained. Upper floors escape stair to be linked from above

THIRD FLOOR PLAN

PLANNING

EXISTING SECONDARY ESCAPE STAIR PLANS

Existing modern construction steel stair, steel and glass balustrade and enclosure to be removed with the floor opening (modern composite deck and concrete) in-filled in accordance with the structural engineer details and specifications

Existing modern construction steel stair, steel and glass balustrade and enclosure to be removed with the floor opening (modern composite deck and concrete) in-filled in accordance with the structural engineer details and specifications

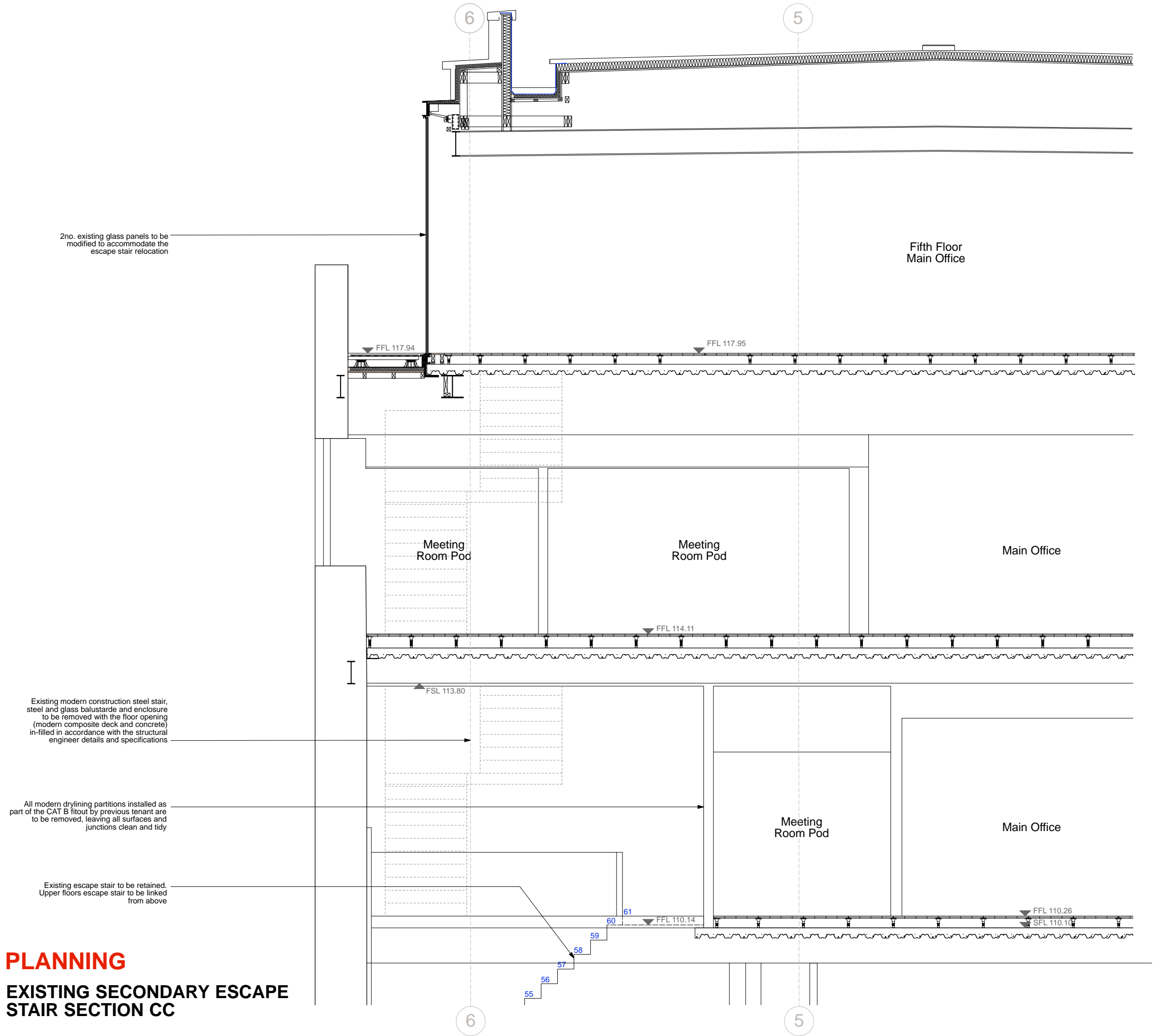
Existing modern construction steel stair, steel and glass balustrade and enclosure to be removed with the floor opening (modern composite deck and concrete) in-filled in accordance with the structural engineer details and specifications



rev	date	notes
<div>gpod architecture & interior design</div>		
CLIENT	PEC NEAL LTD, C/O CBRE GI	
PROJECT	SEVEN DIALS WAREHOUSE LONDON WC2	
TITLE	EXISTING SECONDARY ESCAPE STAIR PLANS	
DWG NO	527-EX.18	REV
DRAWN BY	SF	SCALE 1:50 @ A11
CHECKED BY	DS	DATE Oct 2016
<div><div>T: 020 7549 2133 F: 020 7549 2144 E: info@gpodlondonltd.com W: www.gpodlondonltd.com</div><div>Unit 1 9a Dollington Street Clarendonville London EC1Y 0BQ</div></div>		
<div><div>The drawing is the copyright of gpod london ltd. Not to be reproduced, related or disclosed to any unauthorised person without written permission. Do not scale off this drawing. All indicated dimensions to be checked and verified on site by the contractor before commencement of any fabrication drawings or work whatsoever on site. Report any discrepancies to the Architect immediately. Drawings to be read in conjunction with relevant drawings and specification.</div></div>		
FILE NAME	PRINT SIZE A1	

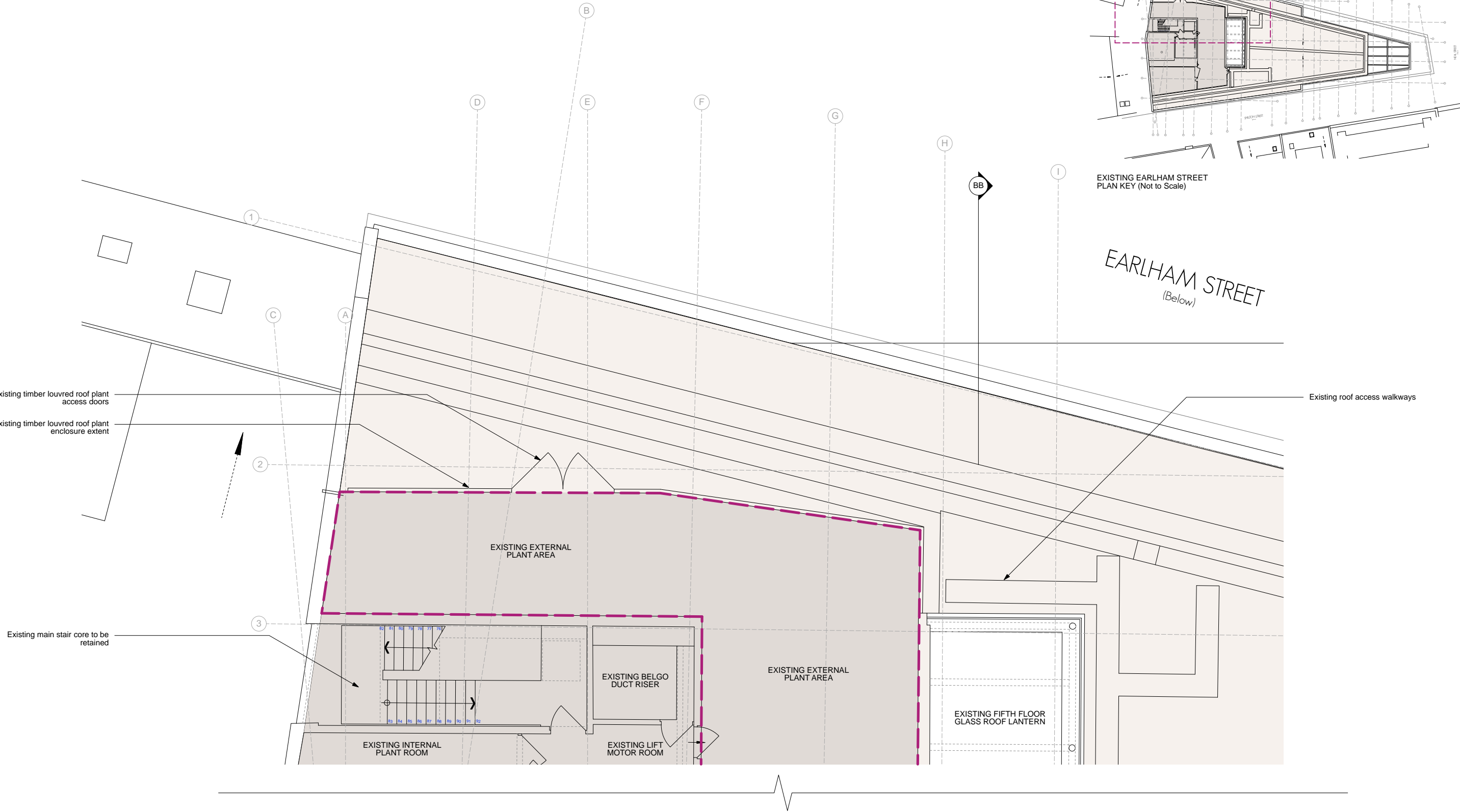
PLANNING

EXISTING SECONDARY ESCAPE
STAIR SECTION CC



rev.	date	notes
gpod architecture & interior design		
CLIENT	PEC NEAL LTD, C/O CBRE GI	
PROJECT	SEVEN DIALS WAREHOUSE LONDON WC2	
TITLE	EXISTING SECONDARY ESCAPE STAIR SECTION CC	
DWG NO	527-EX.19	REV
DRAWN BY	SF	SCALE 1:25 @ A1
CHECKED BY	DS	DATE Oct 2016
T: 020 7549 2133 F: 020 7549 2144 E: info@gpodlondonltd.com W: www.gpodlondonltd.com Unit 1 9a Dollington Street Clarendonville London EC1V 0BQ		
This drawing is the copyright of gpod london ltd. Not to be reproduced, retained or disclosed to any unauthorised person without written permission. Do not scale of this drawing. All indicated dimensions to be checked and verified on site by the contractor before commencement of any fabrication drawings or work, whichever on site. Report any discrepancies to the Architect immediately. Drawings to be read in conjunction with relevant drawings and specification.		
FILE NAME	PRINT SIZE	A1

NOTE:
GRIDLINES ARE SET OUT ON EXISITING BUILDING
STRUCTURE LINES



EXISTING PLANT ENCLOSURE PLAN DETAILS



PLANNING

			PROJECT				DRAWING TITLE			
			SEVEN DIALS WAREHOUSE LONDON WC2				EXISTING PLANT ENCLOSURE PLAN DETAILS			
			CLIENT				<div>gpad</div> <div>architecture & interior design</div> <div>T: 020 7549 2133 F: 020 7549 2144 E: info@gpadlondonltd.com W: www.gpadlondonltd.com</div> <div>Unit 1 9a Dollington Street Clerkenwell London EC1V 0BQ</div>			
			PEC NEALE LTD							
rev.	date	notes	SCALE	1:50 @A1	DATE	Oct 16	DWG BY	SF / DS	REV.	
<div>The drawing is the copyright of gpad london ltd and is not to be reproduced, retained or disclosed to any third party without written permission. Do not scale of this drawing. All indicated dimensions to be checked and verified on site by the contractor before commencement of any fabrication, drawing or work whatsoever on site. Report any discrepancies to the Architect immediately. Drawings to be used in conjunction with relevant drawings and specification.</div> <div>© gpad london ltd.</div>			CHORD	DWG NO.			437-EX.20			

NOTE:
GRIDLINES ARE SET OUT ON EXISITING BUILDING
STRUCTURE LINES



EXISTING EARHAM STREET
ELEVATION KEY (Not to Scale)

EXISTING PLANT ENCLOSURE BAY ELEVATION DETAILS



PLANNING

rev.			date			notes		
The drawing is the copyright of gpad london ltd. Not to be reproduced, retained or disclosed to any unauthorised person either wholly or in part without written permission. Do not scale of the drawing. All indicated dimensions to be checked and verified on site by the contractor before commencement of any fabrication drawings or work whatsoever or site. Report any discrepancies to the Architect immediately. Drawings to be read in conjunction with relevant drawings and specification.			© gpad london ltd.			PROJECT SEVEN DIALS WAREHOUSE LONDON WC2		
CLINT			PEC NEALE LTD			DRAWING TITLE EXISTING PLANT ENCLOSURE BAY ELEVATION DETAILS		
SCALE		1:50 @A1	DATE		Oct 16	DWG BY		SF / DS
CHOD.			DWG NO.		437-EX.21	REV.		
T: 020 7549 2133 F: 020 7549 2144 E: info@gpadlondonltd.com W: www.gpadlondonltd.com			Unit 1 9a Dollington Street Clerkenwell London EC1V 0BQ			gpad architecture & interior design		