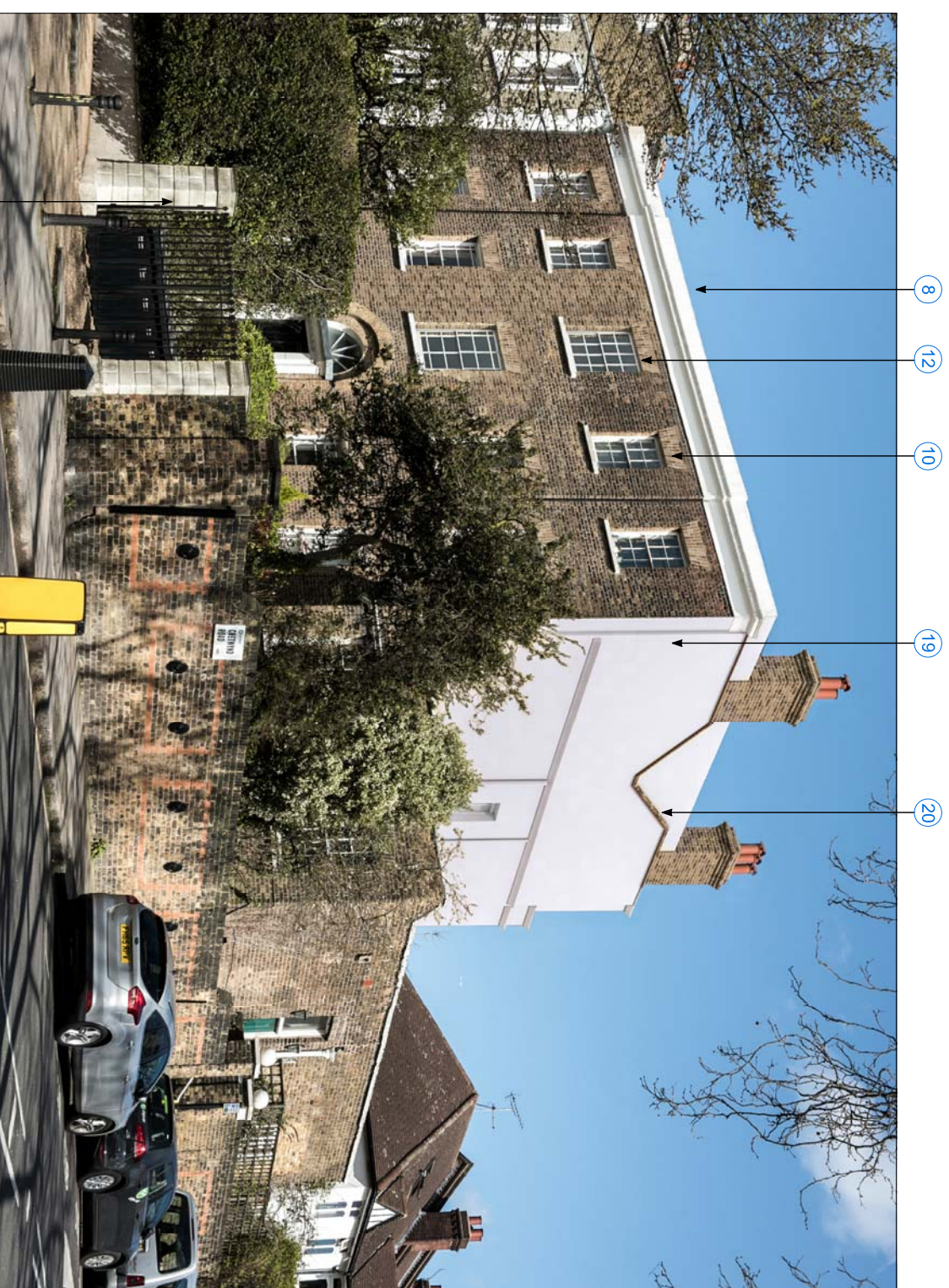


View from corner of Chetwynd road/Highgate road as existing



View from corner of Chetwynd road/Highgate road as proposed



NOTES:

- 1 Pipes crank around cornice
- 2 Poor quality lintels
- 3 Central windows inconsistent with historic precedent
- 8 Pipes removed
- 10 New brick arches to match those below
- 12 New central windows to reflect historic precedent
- 16 Poor quality cement render

REVISIONS

No	Date	Issue For	Issue By
00	31-03-17	Plan. submission	MP

Client:
Michael and Kelly Pawlyn

Project:
Grove End House

Title:
Existing and proposed front views



Third Floor, 28-42 Banner Street, London, EC1Y 8QE
Office: +44 (0) 207 251 8088
Info@exploration-architecture.com
www.exploration-architecture.com

Drawn: MP
MP

CHK: MP

Project Number:
1502

DWG No:
AR-005

Rev:
00

17 Poor detailing resulting in weather staining

18 Poor quality gates

19 New white painted render

20 Improved detailing

21 New gates