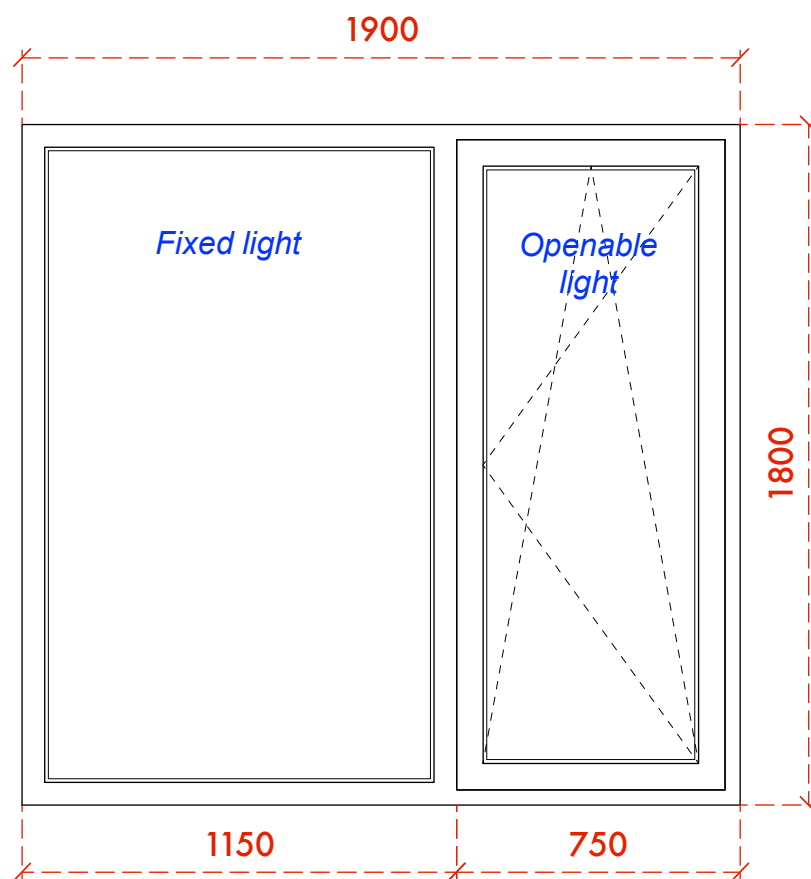
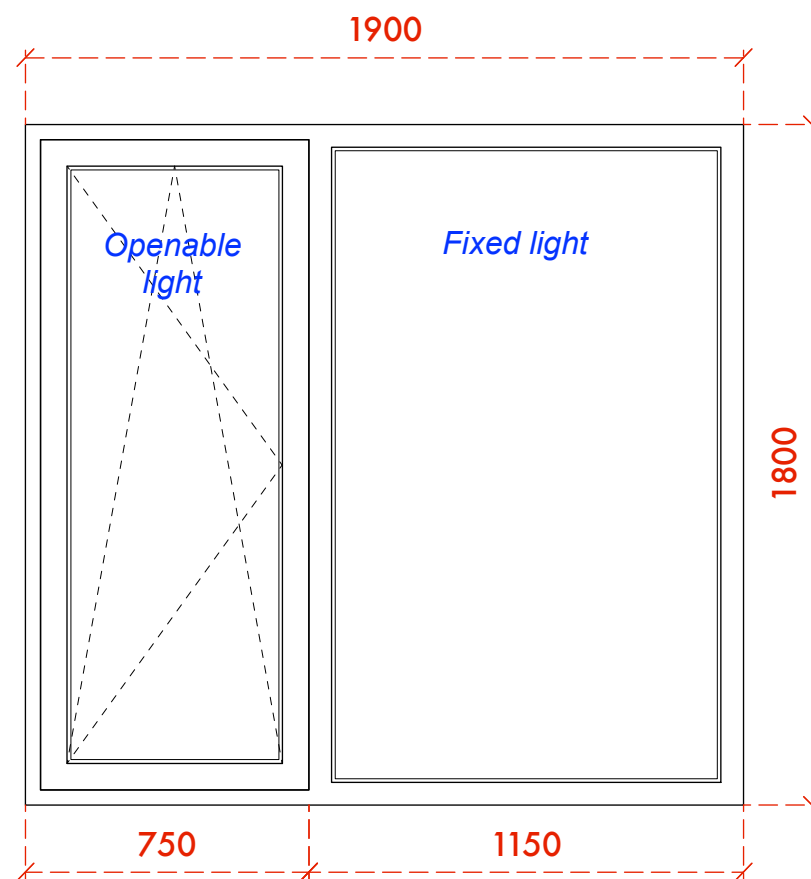


WINDOW W3



WINDOW W1



WINDOW W2

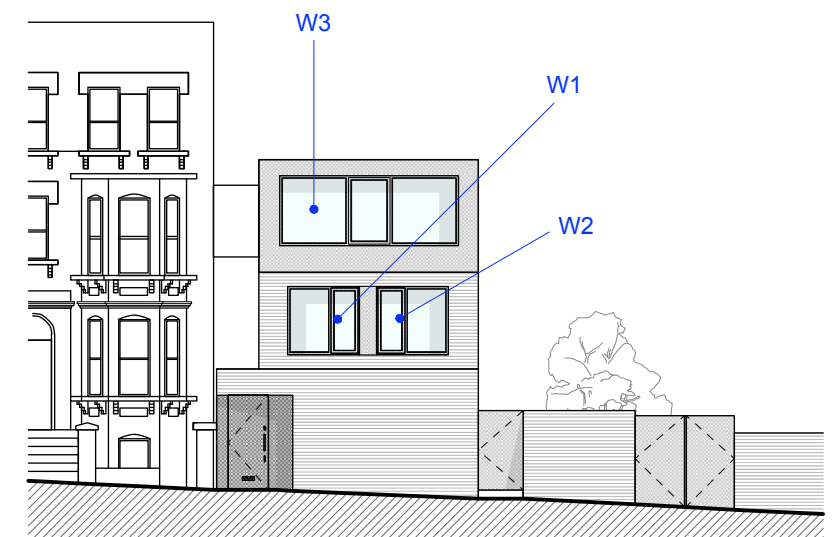
MINOR AMENDMENTS TO FENESTRATION

It proved impossible to find a manufacturer for the previous design of windows where the entire window was a single opening light. It was also advised that such a window would not achieve the required ventilation in the bedrooms and would not meet the U-Value requirements.

As such minor amendments to the fenestration are proposed to achieve both the ventilation requirement and thermal performance.


An openable light is introduced into each window. It would be both hinged and tilt opening to achieve good ventilation and has been designed to balance the elevation - see below.

The windows are to be a composite construction ie timber frames with aluminium face. The aluminium is to be powder coated in RAL colour to match the front door and zinc cladding.



Elevation to show amended fenestration

Scale 1:200 @ A3

DO NOT SCALE THIS DRAWING WRITTEN DIMENSIONS ONLY TO BE USED ALL DIMENSIONS ARE IN MILLIMETRES ALL DIMENSIONS TO BE VERIFIED ON SITE ANY INCONSISTENCIES TO BE REPORTED TO THE ARCHITECT IMMEDIATELY	Job No 7155		p-ad 192D Compden Hill Road, Notting Hill Gate, London, W8 7TH		t: 0208-4590172 e: info@p-ad.co.uk				
	FOR CONSTRUCTION								
	87-93 Kingsgate Road, London, NW6 4LA		Title		TYPICAL WINDOW DETAILS				
			Drawn by SG		Scale 1:20 @ A3			Number 7155/C 2.4	