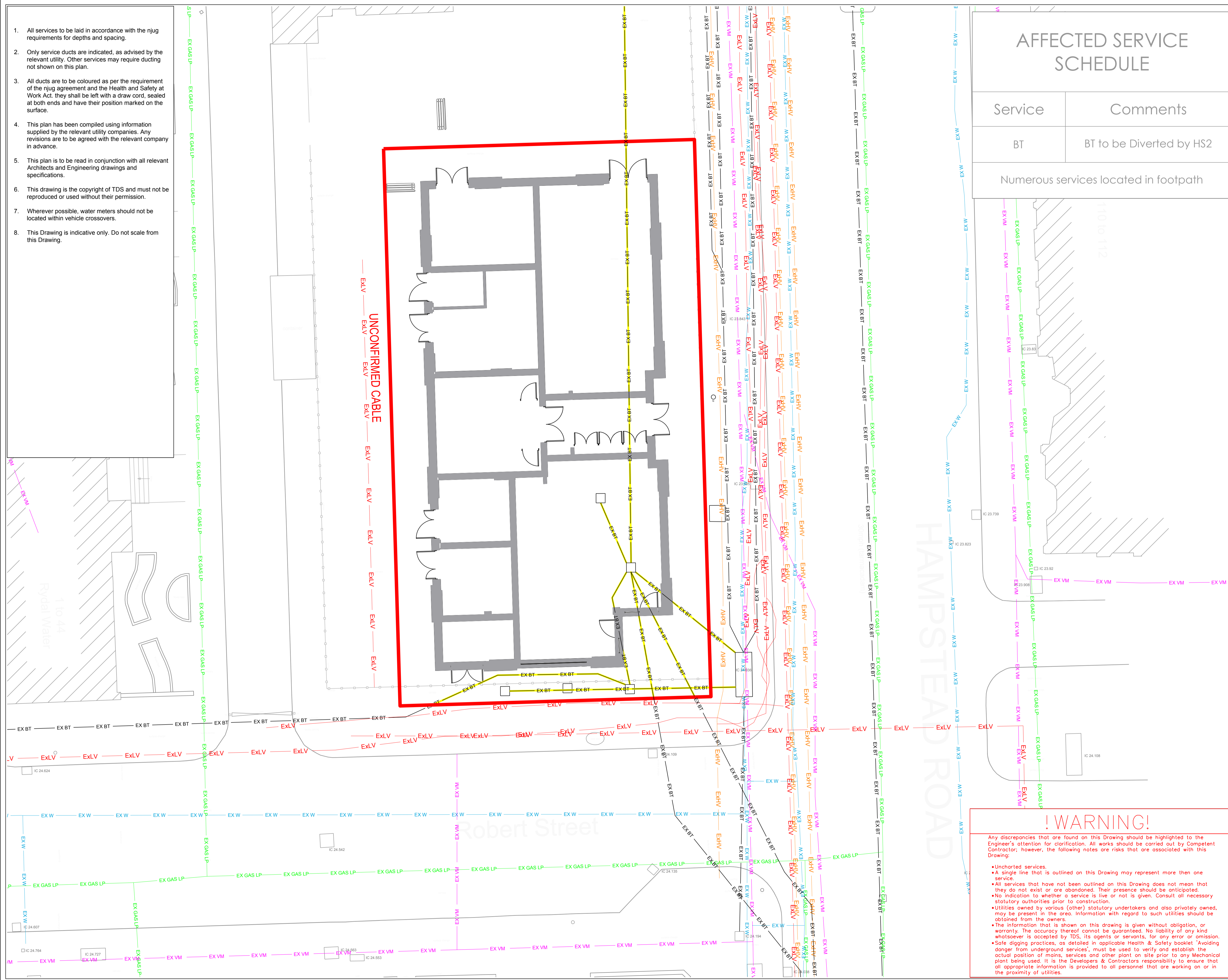


Appendix B – Existing Site Utility Survey Plans

- All services to be laid in accordance with the njg requirements for depths and spacing.
- Only service ducts are indicated, as advised by the relevant utility. Other services may require ducting not shown on this plan.
- All ducts are to be coloured as per the requirement of the njg agreement and the Health and Safety at Work Act, they shall be left with a draw cord, sealed at both ends and have their position marked on the surface.
- This plan has been compiled using information supplied by the relevant utility companies. Any revisions are to be agreed with the relevant company in advance.
- This plan is to be read in conjunction with all relevant Architects and Engineering drawings and specifications.
- This drawing is the copyright of TDS and must not be reproduced or used without their permission.
- Wherever possible, water meters should not be located within vehicle crossovers.
- This Drawing is indicative only. Do not scale from this Drawing.



AFFECTED SERVICE SCHEDULE

Service	Comments
BT	BT to be Diverted by HS2
Numerous services located in footpath	

- BT — Existing BT
- W — Existing Water Main
- VM — Existing Virgin Media
- LP — Existing Gas Main Low Pressure
- ExLV — Existing Low Voltage Electric Main
- ExHV — Existing High Voltage Electric Main
- EHV — Existing Extra High Voltage Electric Main
- FW — Existing Foul Waste
- SW — Existing Surface Water Waste
- BT — BT cable to be diverted by HS2
- 2m Site Boundary



! WARNING!

Any discrepancies that are found on this Drawing should be highlighted to the Engineer's attention for clarification. All works should be carried out by Competent Contractor; however, the following notes are risks that are associated with this Drawing:

- Uncharted services.
- A single line that is outlined on this Drawing may represent more than one service.
- All services that have not been outlined on this Drawing does not mean that they do not exist or are abandoned. Their presence should be anticipated.
- No indication to whether a service is live or not is given. Consult all necessary statutory authorities prior to construction.
- Utilities owned by various (other) statutory undertakers and also privately owned, may be present in the area. Information with regard to such utilities should be obtained from the owners.
- The information that is shown on this drawing is given without obligation, or warranty. The accuracy thereof cannot be guaranteed. No liability of any kind whatsoever is accepted by TDS, its agents or servants, for any error or omission.
- Sole digging practices, as detailed in applicable Health & Safety booklet 'Avoiding danger from underground services', must be used to verify and establish the actual position of mains, services and other plant on site prior to any Mechanical plant being used. It is the Developers & Contractors responsibility to ensure that all appropriate information is provided to all personnel that are working on or in the proximity of utilities.

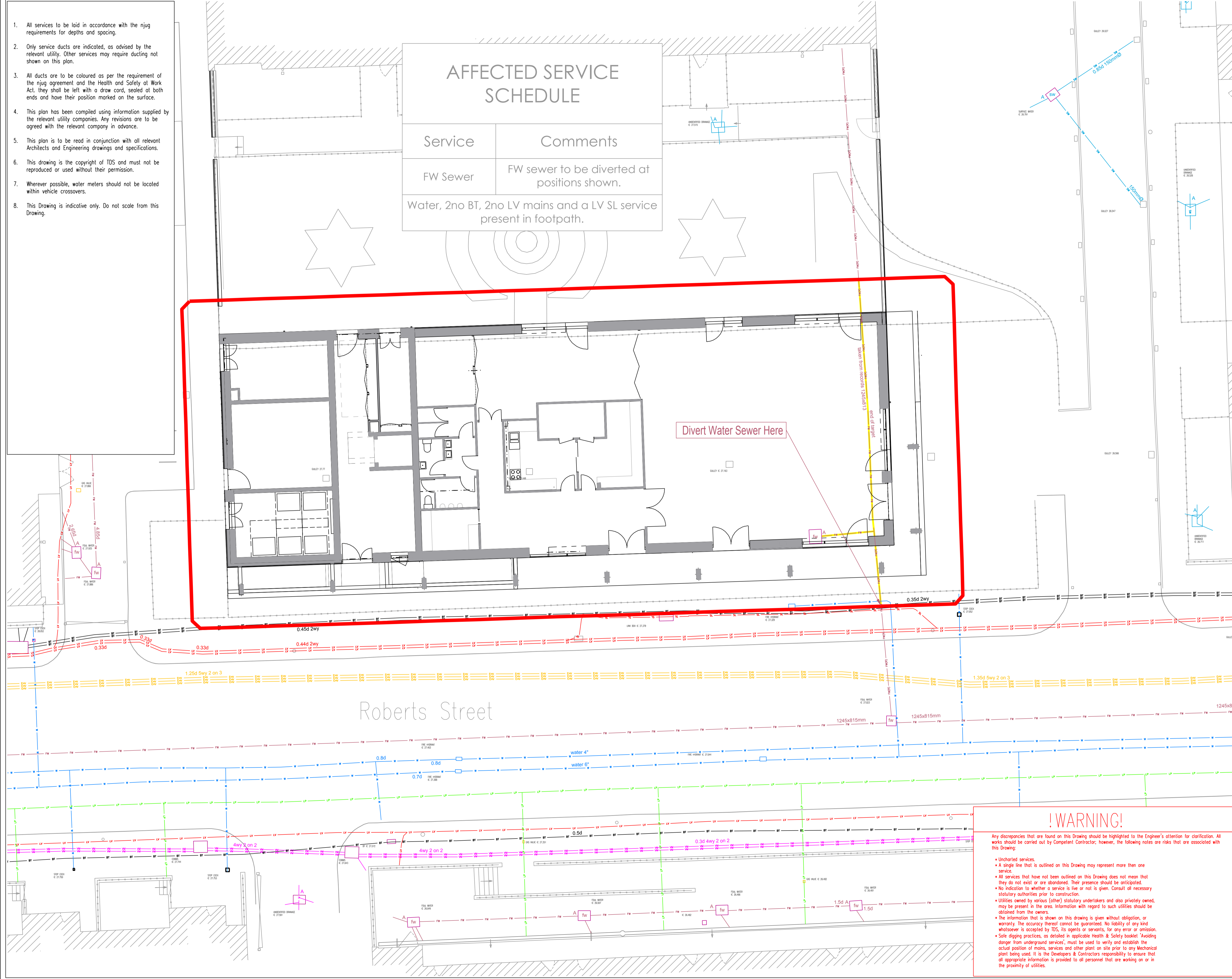
REV	DESCRIPTION	DATE
Revisions		
Client:		
LOVELL		
TECHNICAL & DEVELOPMENT SERVICES (MIDLANDS) LIMITED		
Rushden Hall Hall Avenue Rushden Northants NN10 9NG Tel: 01933 414113 Fax: 01933 509991 Email: enquiries@tds.com Web: www.t-d-s.com		
Site: Camden HS2 Former One Stop Shop		
Drawing: Existing Utilities		
Date: 26/10/15	Scale: 1:100 @ A1	Drawn By: MS
Checked By: PF		Drwg. No: L007-CSL-001

- All services to be laid in accordance with the njug requirements for depths and spacing.
- Only service ducts are indicated, as advised by the relevant utility. Other services may require ducting not shown on this plan.
- All ducts are to be coloured as per the requirement of the njug agreement and the Health and Safety at Work Act, they shall be left with a draw cord, sealed at both ends and have their position marked on the surface.
- This plan has been compiled using information supplied by the relevant utility companies. Any revisions are to be agreed with the relevant company in advance.
- This plan is to be read in conjunction with all relevant Architects and Engineering drawings and specifications.
- This drawing is the copyright of TDS and must not be reproduced or used without their permission.
- Wherever possible, water meters should not be located within vehicle crossovers.
- This Drawing is indicative only. Do not scale from this Drawing.

AFFECTED SERVICE SCHEDULE

Service	Comments
FW Sewer	FW sewer to be diverted at positions shown.
Water, 2no BT, 2no LV mains and a LV SL service present in footpath.	

- BT Existing BT
- W Existing Water Main
- VM Existing Virgin Media
- LP Existing Gas Main Low Pressure
- LV Existing Low Voltage Electric Main
- Existing High Voltage Electric Main
- EHV Existing Extra High Voltage Electric Main
- FW Existing Foul Waste
- SW Existing Surface Water Waste
- FW Existing Foul Waste Sewer to be Diverted
- Site Boundary



Divert Water Sewer Here

!WARNING!

Any discrepancies that are found on this Drawing should be highlighted to the Engineer's attention for clarification. All works should be carried out by Competent Contractor; however, the following notes are risks that are associated with this Drawing:

- Uncharted services.
- A single line that is outlined on this Drawing may represent more than one service.
- All services that have not been outlined on this Drawing does not mean that they do not exist or are abandoned. Their presence should be anticipated.
- No indication to whether a service is live or not is given. Consult all necessary statutory authorities prior to construction.
- Utilities owned by various (other) statutory undertakers and also privately owned, may be present in the area. Information with regard to such utilities should be obtained from the owners.
- The information that is shown on this drawing is given without obligation, or warranty. The accuracy thereof cannot be guaranteed. No liability of any kind whatsoever is accepted by TDS, its agents or servants, for any error or omission.
- Safe digging practices, as detailed in applicable Health & Safety booklet 'Avoiding danger from underground services', must be used to verify and establish the actual position of mains, services and other plant on site prior to any Mechanical plant being used. It is the Developers & Contractors responsibility to ensure that all appropriate information is provided to all personnel that are working on or in the proximity of utilities.

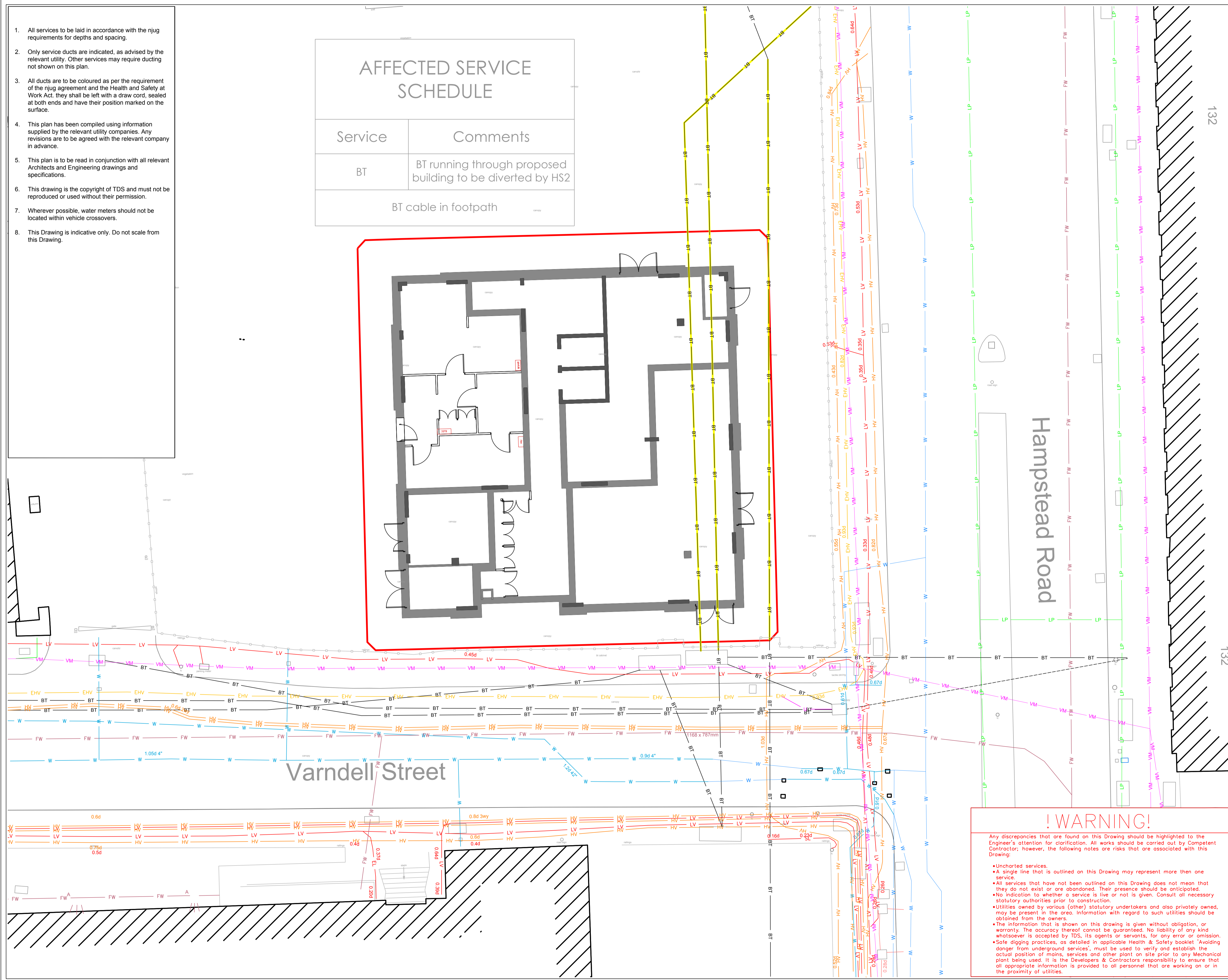
REV	DESCRIPTION	DATE
Revisions		
Client:		
LOVELL		
TECHNICAL & DEVELOPMENT SERVICES (MIDLANDS) LIMITED		
Rushden Hall Hall Avenue Rushden Northants NN10 5NG Tel: 01933 414413 Fax: 01933 350990 Email: enquiries@tds.com Web: www.t-d-s.com		
Site:		
HS2 Camden Roberts Street Car Park		
Drawing:		
Existing Utilities		
Date:	23/10/15	Drwg. No:
Scale:	1:100 @ A1	LO06-CSL-001
Drawn By:	MS	
Checked By:	PF	

- All services to be laid in accordance with the njug requirements for depths and spacing.
- Only service ducts are indicated, as advised by the relevant utility. Other services may require ducting not shown on this plan.
- All ducts are to be coloured as per the requirement of the njug agreement and the Health and Safety at Work Act, they shall be left with a draw cord, sealed at both ends and have their position marked on the surface.
- This plan has been compiled using information supplied by the relevant utility companies. Any revisions are to be agreed with the relevant company in advance.
- This plan is to be read in conjunction with all relevant Architects and Engineering drawings and specifications.
- This drawing is the copyright of TDS and must not be reproduced or used without their permission.
- Wherever possible, water meters should not be located within vehicle crossovers.
- This Drawing is indicative only. Do not scale from this Drawing.

AFFECTED SERVICE SCHEDULE

Service	Comments
BT	BT running through proposed building to be diverted by HS2
	BT cable in footpath

- BT Existing BT
- W Existing Water Main
- VM Existing Virgin Media
- LP Existing Gas Main Low Pressure
- LV Existing Low Voltage Electric Main
- HV Existing High Voltage Electric Main
- EHV Existing Extra High Voltage Electric Main
- FW Existing Foul Waste
- SW Existing Surface Water Waste
- BT BT cable to be diverted by HS2
- Site Boundary



132

132

Hampstead Road

Varndell Street

REV	DESCRIPTION	DATE
Revisions		
Client:		
LOVELL		
TECHNICAL & DEVELOPMENT SERVICES (MIDLANDS) LIMITED		
Rushden Hall Hall Avenue Rushden Northants NN10 5NG		
Tel: 01933 411413 Fax: 01933 350999 Email: enquiries@t-d-s.com Web: www.t-d-s.com		
Site:		
Camden HS2 new roads		
Drawing:		
Existing Utilities		
Date:	26/10/15	Drawn By:
Scale:	1:100 @ A1	Checked By:
Drawn By:	MS	
Checked By:	PF	

LOVELL

TECHNICAL & DEVELOPMENT SERVICES (MIDLANDS) LIMITED

Rushden Hall
Hall Avenue
Rushden
Northants
NN10 5NG

Tel: 01933 411413
Fax: 01933 350999
Email: enquiries@t-d-s.com
Web: www.t-d-s.com



Site:
Camden HS2 new roads

Drawing:
Existing Utilities

Date: 26/10/15
Scale: 1:100 @ A1
Drawn By: MS
Checked By: PF

Drawn No:
L008-CSL-001

! WARNING!

Any discrepancies that are found on this Drawing should be highlighted to the Engineer's attention for clarification. All works should be carried out by Competent Contractor; however, the following notes are risks that are associated with this Drawing:

- Uncharted services.
- A single line that is outlined on this Drawing may represent more than one service.
- All services that have not been outlined on this Drawing does not mean that they do not exist or are abandoned. Their presence should be anticipated.
- No indication to whether a service is live or not is given. Consult all necessary statutory authorities prior to construction.
- Utilities owned by various (other) statutory undertakers and also privately owned, may be present in the area. Information with regard to such utilities should be obtained from the owners.
- The information that is shown on this drawing is given without obligation, or warranty. The accuracy thereof cannot be guaranteed. No liability of any kind whatsoever is accepted by TDS, its agents or servants, for any error or omission.
- Safe digging practices, as detailed in applicable Health & Safety booklet 'Avoiding danger from underground services', must be used to verify and establish the actual position of mains, services and other plant on site prior to any Mechanical plant being used. It is the Developers & Contractors responsibility to ensure that all appropriate information is provided to all personnel that are working on or in the proximity of utilities.

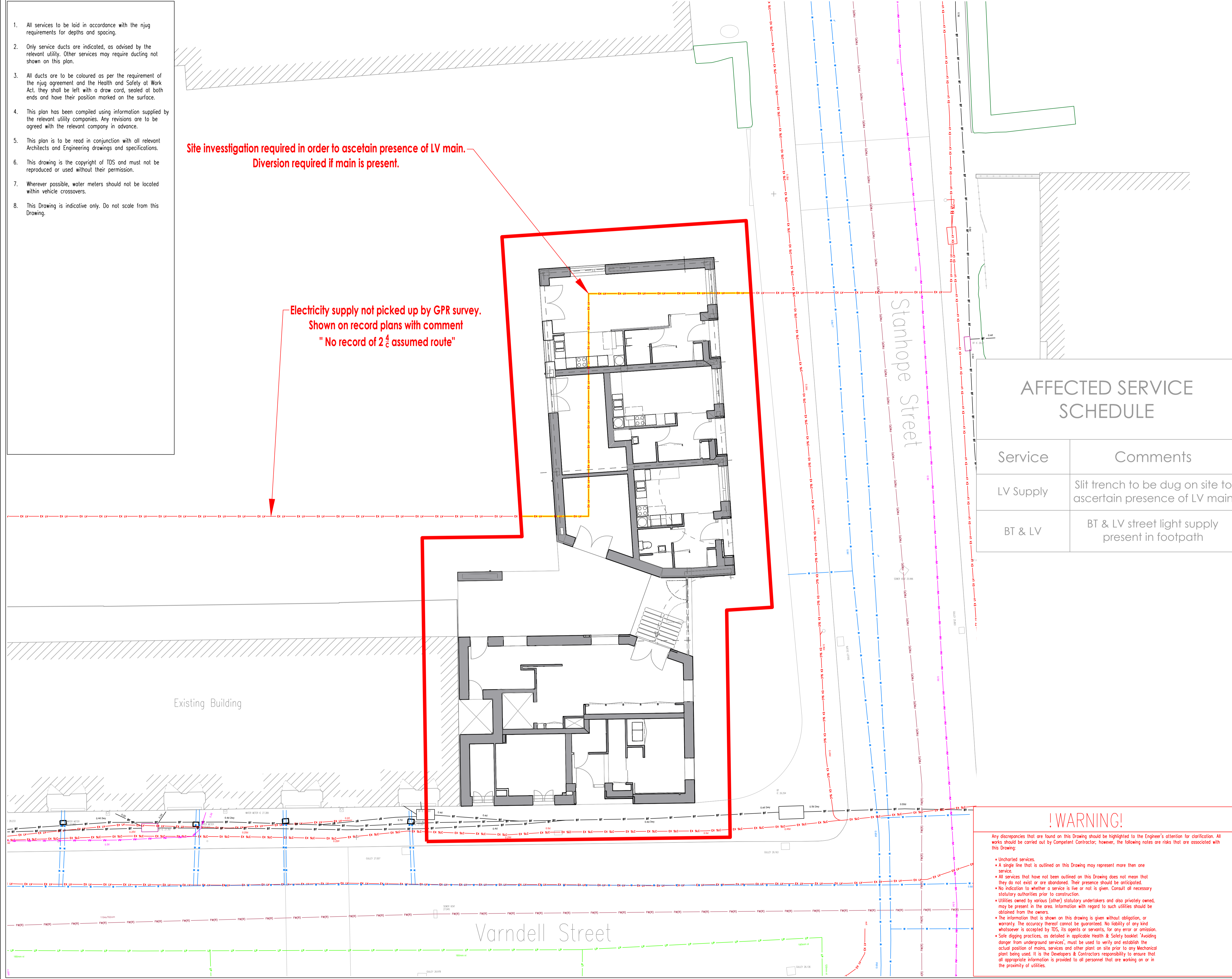
DRAFT

- All services to be laid in accordance with the njug requirements for depths and spacing.
- Only service ducts are indicated, as advised by the relevant utility. Other services may require ducting not shown on this plan.
- All ducts are to be coloured as per the requirement of the njug agreement and the Health and Safety at Work Act, they shall be left with a draw cord, sealed at both ends and have their position marked on the surface.
- This plan has been compiled using information supplied by the relevant utility companies. Any revisions are to be agreed with the relevant company in advance.
- This plan is to be read in conjunction with all relevant Architects and Engineering drawings and specifications.
- This drawing is the copyright of TDS and must not be reproduced or used without their permission.
- Wherever possible, water meters should not be located within vehicle crossovers.
- This Drawing is indicative only. Do not scale from this Drawing.

Site investigation required in order to ascertain presence of LV main.
Diversion required if main is present.

Electricity supply not picked up by GPR survey.
Shown on record plans with comment
"No record of 2 1/2 assumed route"

- BT Existing BT
- W Existing Water Main
- VM Existing Virgin Media
- LP Existing Gas Main Low Pressure
- EX LV Existing Low Voltage Electric Main
- EX SLC Existing Street Lighting LV Electric
- FW Existing Foul Waste
- SW Existing Surface Water Waste
- EX-LV Low Voltage Electric Main to be diverted if present
- Site Boundary



AFFECTED SERVICE SCHEDULE

Service	Comments
LV Supply	Slit trench to be dug on site to ascertain presence of LV main
BT & LV	BT & LV street light supply present in footpath

REV DESCRIPTION DATE

Revisions

Client:

LOVELL

TECHNICAL & DEVELOPMENT SERVICES (MIDLANDS) LIMITED

Rushden Hall
Hall Avenue
Rushden
Northants
NN10 5NG

Tel: 01933 411413
Fax: 01933 350999
Email: enquiries@t-d-s.com
Web: www.t-d-s.com



Site:
Camden HS2 Varndell Street

Drawing:
Existing Utilities

Date: 23/10/2015
Scale: 1:100 @ A1
Drawn By: MS
Checked By: PF

Drawg. No:
L005-CSL-001

!WARNING!

Any discrepancies that are found on this Drawing should be highlighted to the Engineer's attention for clarification. All works should be carried out by Competent Contractor; however, the following notes are risks that are associated with this Drawing:

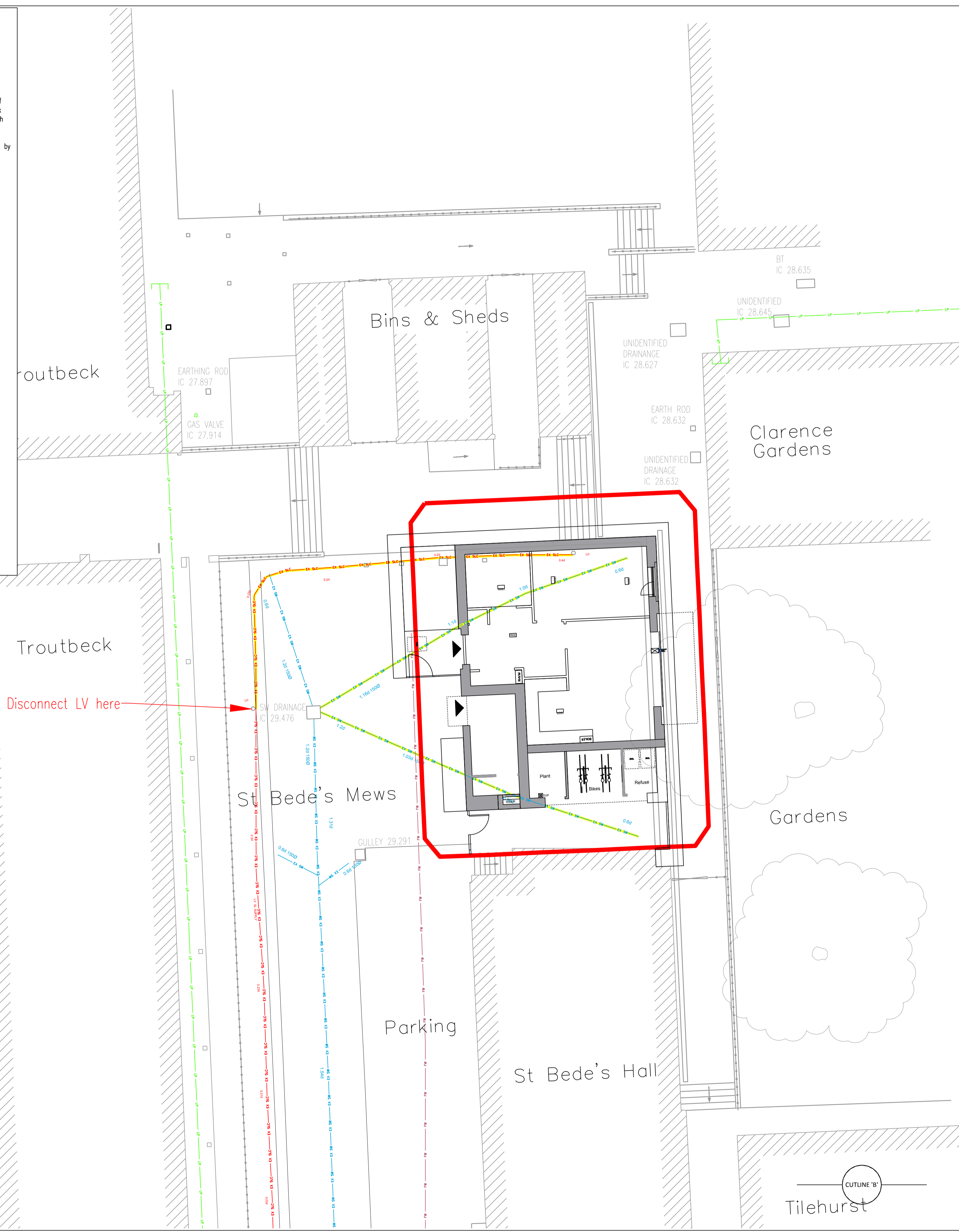
- Uncharted services.
- A single line that is outlined on this Drawing may represent more than one service.
- All services that have not been outlined on this Drawing does not mean that they do not exist or are abandoned. Their presence should be anticipated.
- No indication to whether a service is live or not is given. Consult all necessary statutory authorities prior to construction.
- Utilities owned by various (other) statutory undertakers and also privately owned, may be present in the area. Information with regard to such utilities should be obtained from the owners.
- The information that is shown on this drawing is given without obligation, or warranty. The accuracy thereof cannot be guaranteed. No liability of any kind whatsoever is accepted by TDS, its agents or servants, for any error or omission.
- Safe digging practices, as detailed in applicable Health & Safety booklet 'Avoiding danger from underground services', must be used to verify and establish the actual position of mains, services and other plant on site prior to any Mechanical plant being used. It is the Developers & Contractors responsibility to ensure that all appropriate information is provided to all personnel that are working on or in the proximity of utilities.

DRAFT

Notes:

- All services to be laid in accordance with the njug requirements for depths and spacing.
- Only service ducts are indicated, as advised by the relevant utility. Other services may require ducting not shown on this plan.
- All ducts are to be coloured as per the requirement of the njug agreement and the Health and Safety of Work Act, they shall be left with a draw cord, sealed at both ends and have their position marked on the surface.
- This plan has been compiled using information supplied by the relevant utility companies. Any revisions are to be agreed with the relevant company in advance.
- This plan is to be read in conjunction with all relevant Architects and Engineering drawings and specifications.
- This drawing is the copyright of TDS and must not be reproduced or used without their permission.
- Wherever possible, water meters should not be located within vehicle crossovers.
- This Drawing is indicative only. Do not scale from this Drawing.

- Existing BT
- Existing Water Main
- Existing Virgin Media
- Existing LP Gas Main
- Existing LV Electric Main
- Existing LV Street Lighting Main
- Existing LV Street lighting Main to be Abandoned
- Existing Foul Waste
- Existing Surface Water Waste
- Existing Surface Water to be disconnected & abandoned
- 2m Site Boundary



AFFECTED SERVICE SCHEDULE

Service	Comments
LV SLC Supply	LV Cable to be disconnected at LP as marked and LP within building footprint to be removed. TDS to liaise with Camden Borough Council Highways.
SW Sewer	2no SW Connections into adjacent MH to be removed.
FW Sewer	FW & SW to West of development close to 2m boundary.

!WARNING!

Any discrepancies that are found on this Drawing should be highlighted to the Engineer's attention for clarification. All works should be carried out by Competent Contractor; however, the following notes are risks that are associated with this Drawing:

- Uncharted services.
- A single line that is outlined on this Drawing may represent more than one service.
- All services that have not been outlined on this Drawing does not mean that they do not exist or are abandoned. Their presence should be anticipated.
- No indication to whether a service is live or not is given. Consult all necessary statutory authorities prior to construction.
- Utilities owned by various (other) statutory undertakers and also privately owned, may be present in the area. Information with regard to such utilities should be obtained from the owners.
- The information that is shown on this drawing is given without obligation, or warranty. The accuracy thereof cannot be guaranteed. No liability of any kind whatsoever is accepted by TDS, its agents or servants, for any error or omission.
- Safe digging practices, as detailed in applicable Health & Safety booklet 'Avoiding danger from underground services', must be used to verify and establish the actual position of mains, services and other plant on site prior to any Mechanical plant being used. It is the Developers & Contractors responsibility to ensure that all appropriate information is provided to all personnel that are working on or in the proximity of utilities.

REV DESCRIPTION DATE

Revisions

Client:
LOVELL

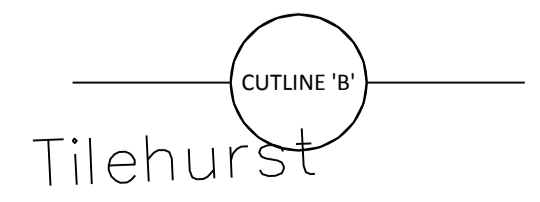
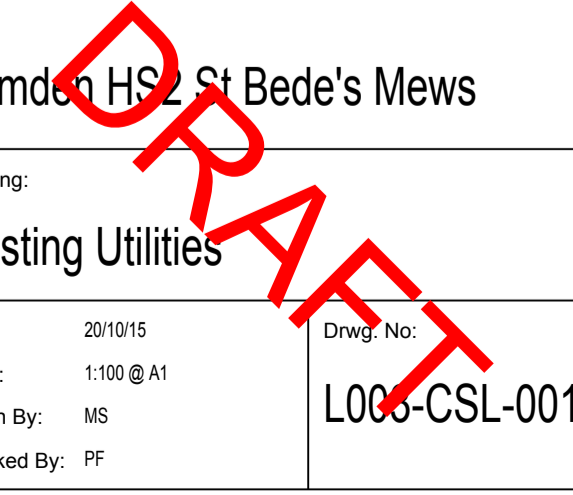
TECHNICAL & DEVELOPMENT SERVICES (MIDLANDS) LIMITED
Rushden Hall
Hall Avenue
Rushden
Northants
NN10 5NG
Tel: 01933 411413
Fax: 01933 350999
Email: enquiries@t-d-s.com
Web: www.t-d-s.com



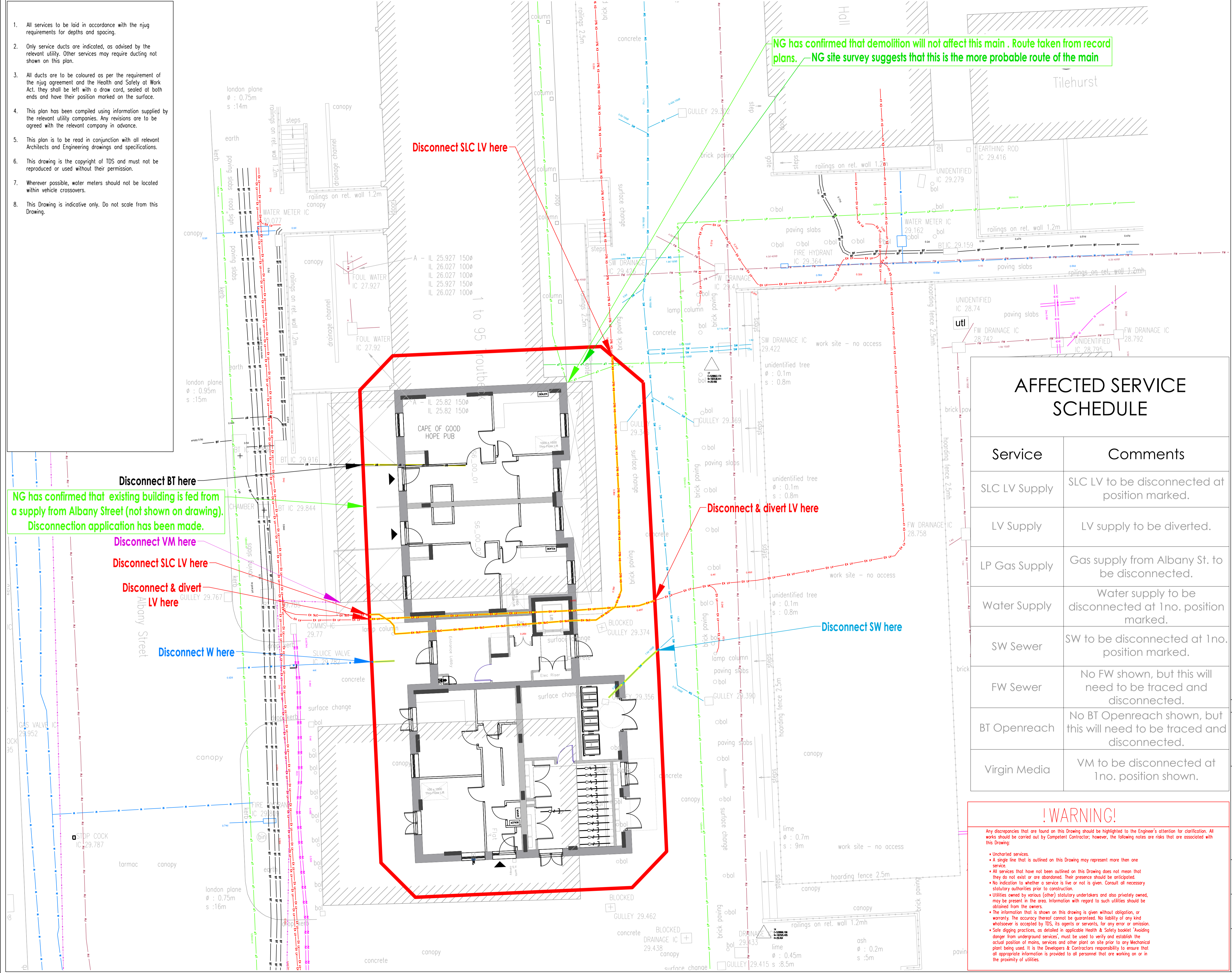
Site:
Camden HSE St Bede's Mews

Drawing:
Existing Utilities

Date: 20/10/15
Scale: 1:100 @ A1
Drawn By: MS
Checked By: PF
Dwg. No:
L000-CSL-001



- All services to be laid in accordance with the njug requirements for depths and spacing.
- Only service ducts are indicated, as advised by the relevant utility. Other services may require ducting not shown on this plan.
- All ducts are to be coloured as per the requirement of the njug agreement and the Health and Safety at Work Act, they shall be left with a draw cord, sealed at both ends and have their position marked on the surface.
- This plan has been compiled using information supplied by the relevant utility companies. Any revisions are to be agreed with the relevant company in advance.
- This plan is to be read in conjunction with all relevant Architects and Engineering drawings and specifications.
- This drawing is the copyright of TDS and must not be reproduced or used without their permission.
- Wherever possible, water meters should not be located within vehicle crossovers.
- This Drawing is indicative only. Do not scale from this Drawing.



NG has confirmed that demolition will not affect this main. Route taken from record plans. NG site survey suggests that this is the more probable route of the main

Disconnect SLC LV here

Disconnect BT here

NG has confirmed that existing building is fed from a supply from Albany Street (not shown on drawing). Disconnection application has been made.

Disconnect VM here

Disconnect SLC LV here

Disconnect & divert LV here

Disconnect W here

Disconnect & divert LV here

Disconnect SW here

AFFECTED SERVICE SCHEDULE

Service	Comments
SLC LV Supply	SLC LV to be disconnected at position marked.
LV Supply	LV supply to be diverted.
LP Gas Supply	Gas supply from Albany St. to be disconnected.
Water Supply	Water supply to be disconnected at 1no. position marked.
SW Sewer	SW to be disconnected at 1no. position marked.
FW Sewer	No FW shown, but this will need to be traced and disconnected.
BT Openreach	No BT Openreach shown, but this will need to be traced and disconnected.
Virgin Media	VM to be disconnected at 1no. position shown.

!WARNING!

Any discrepancies that are found on this Drawing should be highlighted to the Engineer's attention for clarification. All services should be carried out by Competent Contractor; however, the following notes are risks that are associated with this Drawing:

- Uncharted services.
- A single line that is outlined on this Drawing may represent more than one service.
- All services that have not been outlined on this Drawing does not mean that they do not exist or are abandoned. Their presence should be anticipated.
- No indication to whether a service is live or not is given. Consult all necessary statutory authorities prior to construction.
- Utilities owned by various (other) statutory undertakers and also privately owned, may be present in the area. Information with regard to such utilities should be obtained from the owners.
- The information that is shown on this drawing is given without obligation, or warranty. The accuracy thereof cannot be guaranteed. No liability of any kind whatsoever is accepted by TDS, its agents or servants, for any error or omission.
- Safe digging practices, as detailed in applicable Health & Safety booklet 'Avoiding danger from underground services', must be used to verify and establish the actual position of mains, services and other plant on site prior to any Mechanical plant being used. It is the Developers & Contractors responsibility to ensure that all appropriate information is provided to all personnel that are working on or in the proximity of utilities.

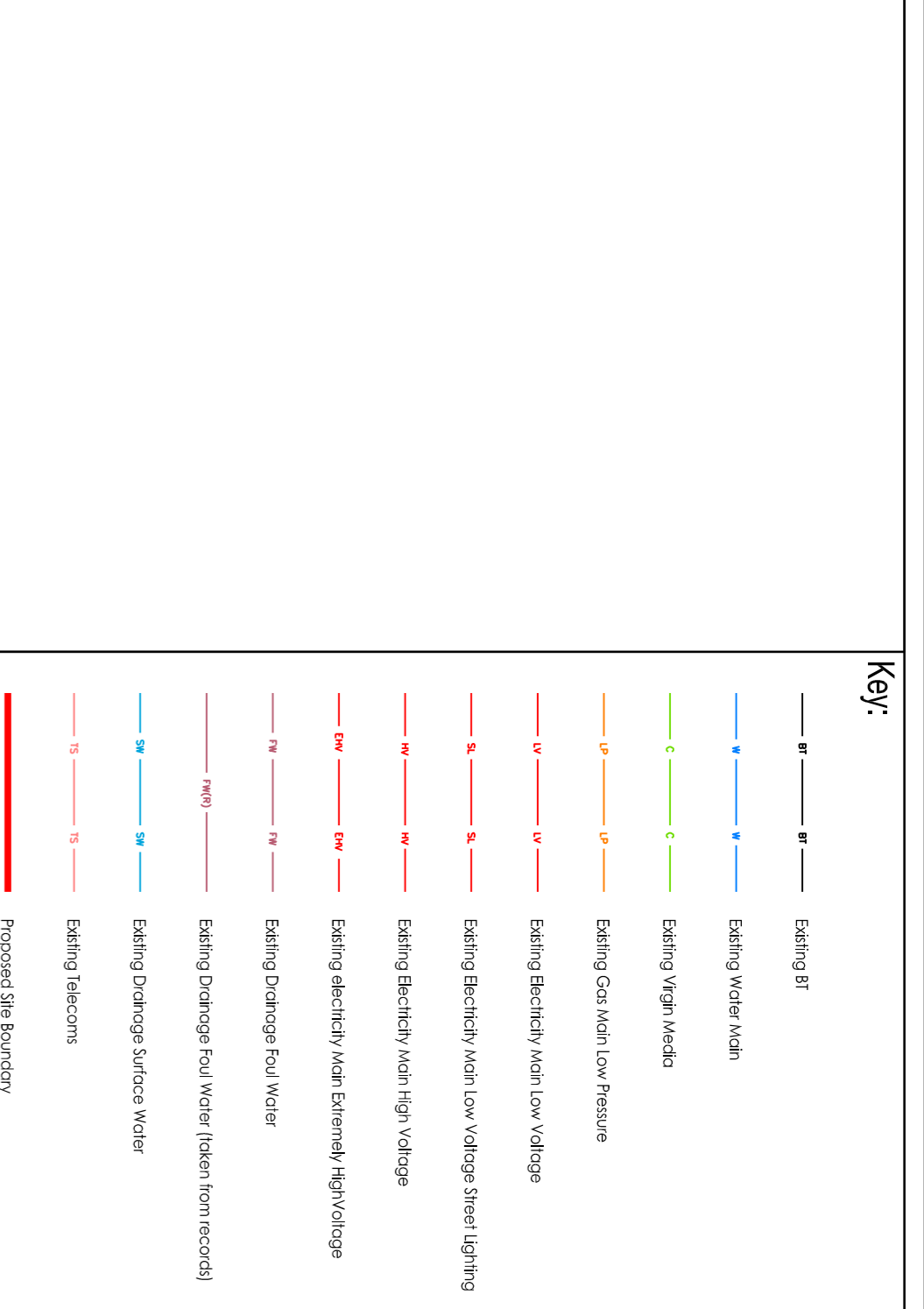
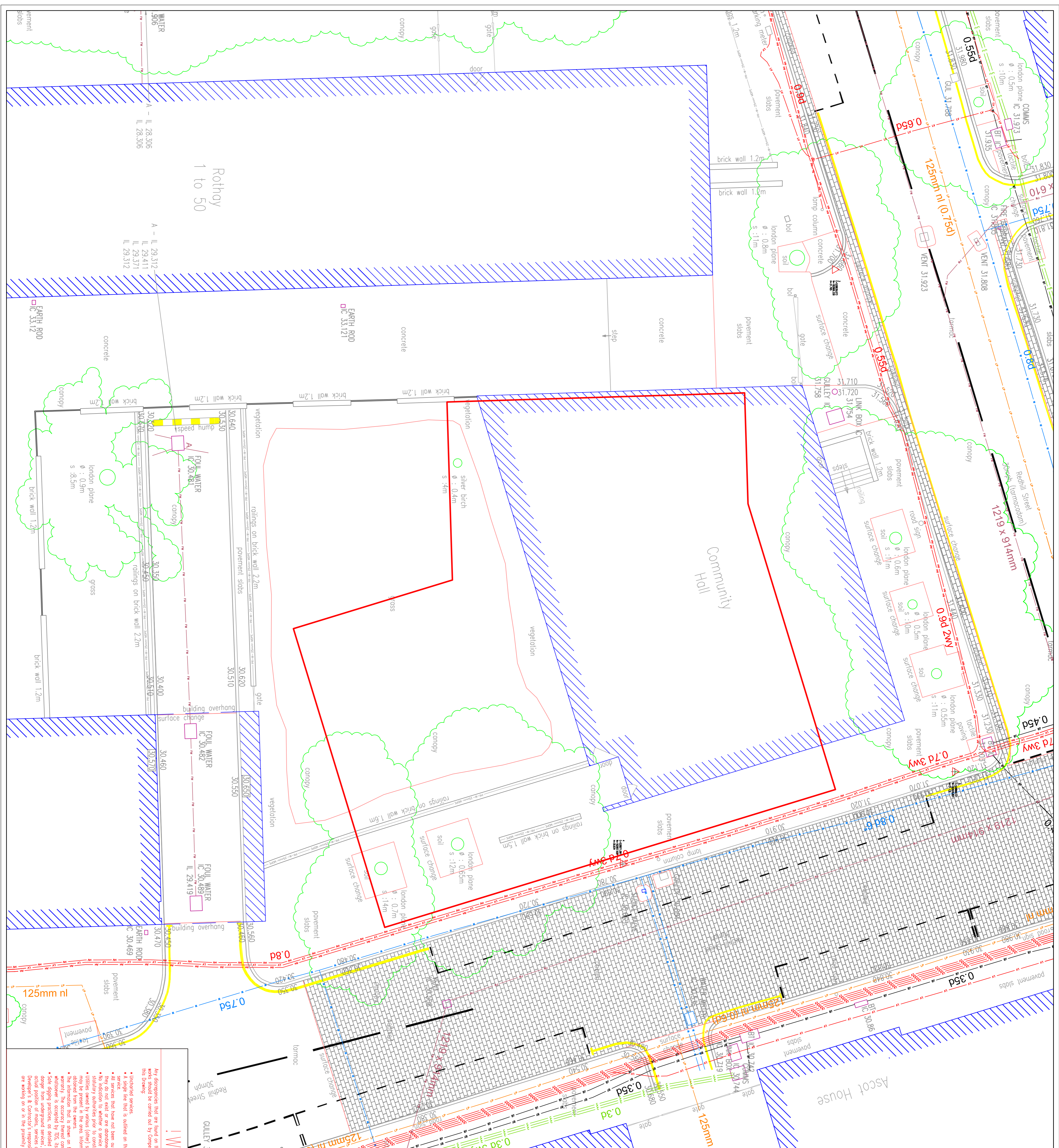
- Existing BT
- Existing BT to be disconnected
- Existing Water Main
- Existing Water Main to be Disconnected
- Existing LP Gas Main
- Existing LP Gas Main to be Disconnected
- Existing LV Electric Main
- Existing LV Electric Main to be Diverted
- Existing LV Street Lighting Main
- Existing LV Street Lighting Main to be Disconnected
- Existing Surface Water
- Existing Surface Water to be Disconnected
- Existing Foul Water
- Existing Virgin Media
- 2m Site Boundary

REV	DESCRIPTION	DATE
Revisions		
Client:		
LOVELL		
TECHNICAL & DEVELOPMENT SERVICES (MIDLANDS) LIMITED		
Rushden Hall Hall Avenue Rushden Northants NN10 5NG Tel: 01933 411413 Fax: 01933 350999 Email: enquiries@t-d-s.com Web: www.t-d-s.com		
Site:		
Camden HSE Cape of Good Hope Pub		
Drawing:		
Existing Utilities		
Date:	23/10/15	Drawn No:
Scale:	1:100 @ A1	
Drawn By:	MS	
Checked By:	PF	



DRAFT

L004-CSL-001



- Notes:**
- All services to be laid in accordance with the NUGS requirements for depths and spacing.
 - Only service ducts are indicated, as advised by the relevant utility. Other services may require ducting not shown on this plan.
 - All ducts are to be coloured as per the requirements of the NUGS agreement and the Health and Safety at Work Act. They shall be left with a crew card, sealed at both ends and have their position marked on the surface.
 - This plan has been compiled using information supplied by the relevant utility companies. Any errors are to be agreed with the relevant company in advance.
 - This plan is to be read in conjunction with all relevant Architects and Engineering drawings and specifications.
 - The drawing is the copyright of TDS and must not be reproduced or used without their permission.
 - Wherever possible, water meters should not be located within vehicle crossings.
 - This Drawing is indicative only. Do not scale from this Drawing.

WARNING!

For information, that are listed on this Drawing should be highlighted in the Employer's situation, for information. An event should be carried out by competent contractor. However, the following notes are also that are associated with this Drawing:

- **Highlighted services:**
- All services that have not been outlined on this Drawing does not mean that they are not present. It is the responsibility of the contractor to check for any services that may be present.
- Utility services are shown for information only. It is the responsibility of the contractor to check for any services that may be present.
- The information that is shown on this drawing is given without obligation or warranty. The accuracy thereof cannot be guaranteed. We notify of any kind of error or omission in this drawing, we shall not be liable for any consequences arising therefrom.
- Site signs practices or similar in particular health & safety notices. Working under ground services, must be used to verify and establish the actual position of roots, services and other points on site prior to any mechanical point being used. It is the Developer's & Contractor's responsibility to ensure that all appropriate information is provided to all personnel that are working on or in the vicinity of the site.

<p>REV: DESCRIPTION BR: DATE</p> <p>Revisions</p> <p>Client</p> <p>LOVELL</p> <p>TECHNICAL & DEVELOPMENT SERVICES (MIDLANDS) LIMITED</p> <p>Rusden Hall Holl Avenue Rushden Northants NN10 9NG Tel: 01933 411413 Fax: 01933 350999 Email: enquiries@tds.com Web: www.tds.com</p> <p>Site: Dick Collins Hall, Regents Park Estate</p> <p>Existing Utilities</p> <p>Date: 26/10/2016 Scale: 1:100 @ A1 Drawn By: NR Checked By: PR</p> <p>Draw No: L001-CSL-001</p>	<p>WARNING!</p> <p>For information, that are listed on this Drawing should be highlighted in the Employer's situation, for information. An event should be carried out by competent contractor. However, the following notes are also that are associated with this Drawing:</p> <ul style="list-style-type: none"> • Highlighted services: • All services that have not been outlined on this Drawing does not mean that they are not present. It is the responsibility of the contractor to check for any services that may be present. • Utility services are shown for information only. It is the responsibility of the contractor to check for any services that may be present. • The information that is shown on this drawing is given without obligation or warranty. The accuracy thereof cannot be guaranteed. We notify of any kind of error or omission in this drawing, we shall not be liable for any consequences arising therefrom. • Site signs practices or similar in particular health & safety notices. Working under ground services, must be used to verify and establish the actual position of roots, services and other points on site prior to any mechanical point being used. It is the Developer's & Contractor's responsibility to ensure that all appropriate information is provided to all personnel that are working on or in the vicinity of the site. <p>Notes:</p> <ol style="list-style-type: none"> All services to be laid in accordance with the NUGS requirements for depths and spacing. Only service ducts are indicated, as advised by the relevant utility. Other services may require ducting not shown on this plan. All ducts are to be coloured as per the requirements of the NUGS agreement and the Health and Safety at Work Act. They shall be left with a crew card, sealed at both ends and have their position marked on the surface. This plan has been compiled using information supplied by the relevant utility companies. Any errors are to be agreed with the relevant company in advance. This plan is to be read in conjunction with all relevant Architects and Engineering drawings and specifications. The drawing is the copyright of TDS and must not be reproduced or used without their permission. Wherever possible, water meters should not be located within vehicle crossings. This Drawing is indicative only. Do not scale from this Drawing.
--	--