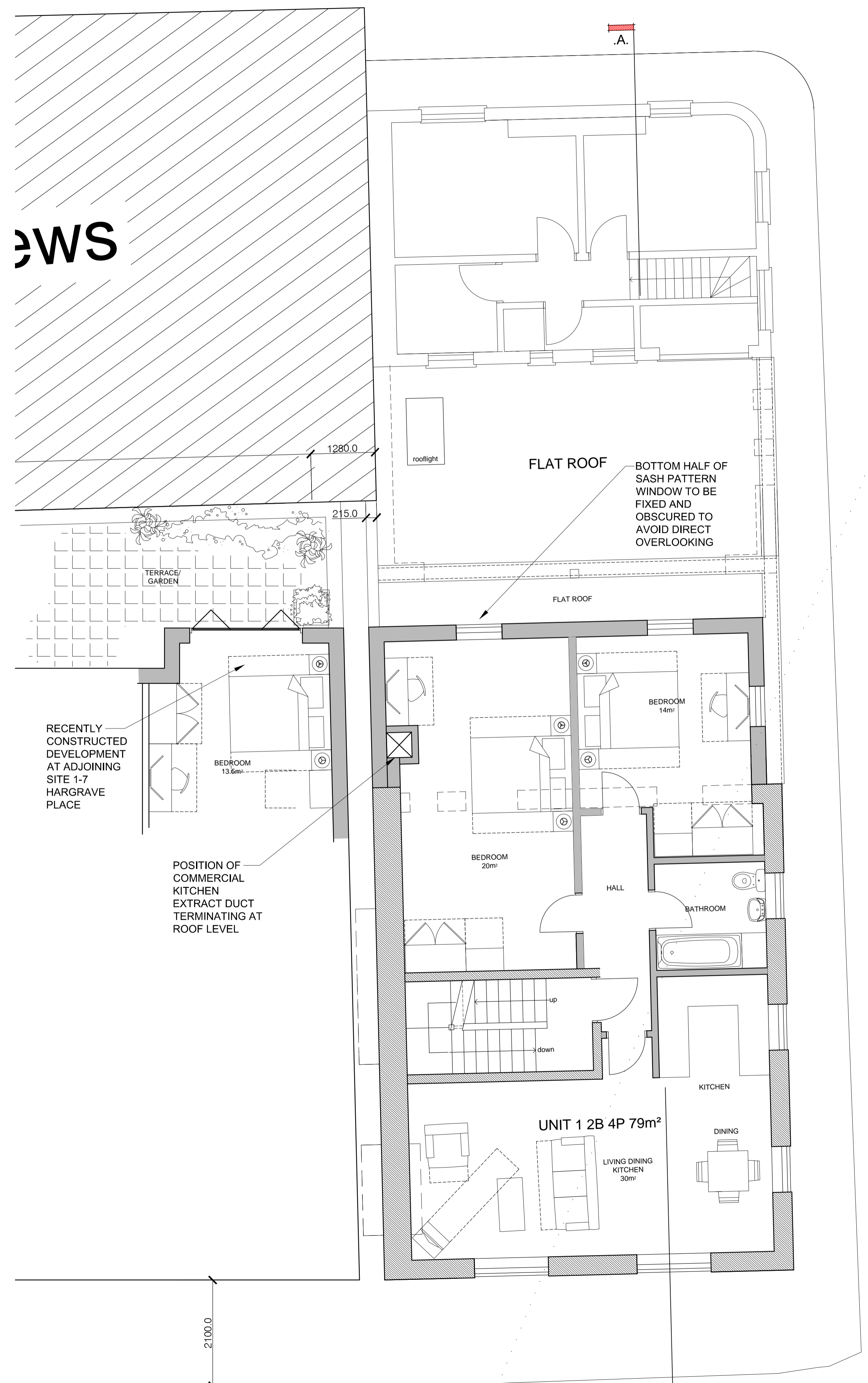
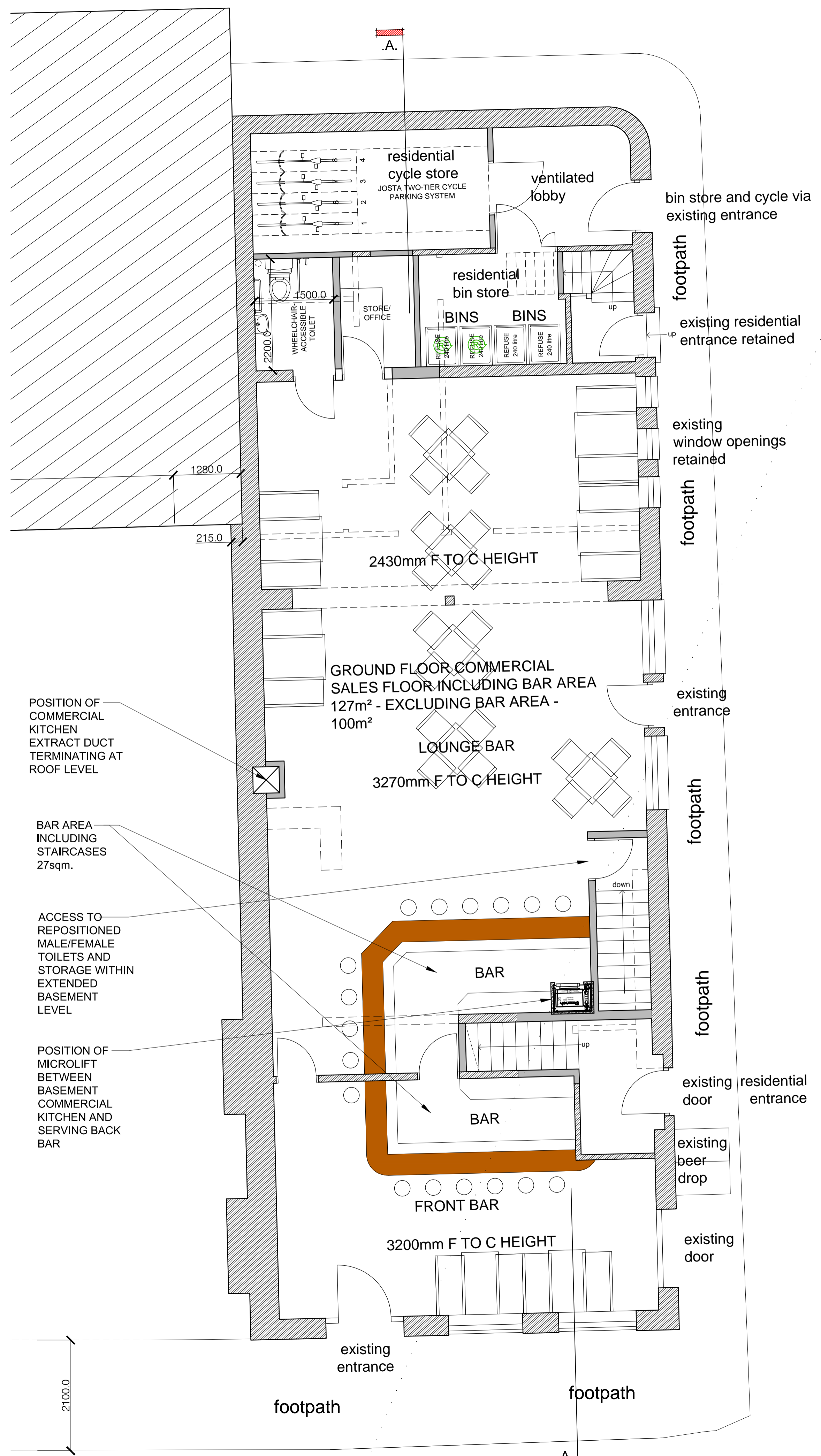


notes:
Do not scale from this drawing
All dimensions to be checked on site and any discrepancies reported to the Architect/Contract Administrator before proceeding with the works on site, or off-site fabrication

SCHEDULE OF ACCOMMODATION

RESIDENTIAL

- UNIT 1 - 2 BED 4P FLAT - 79 SQM
- UNIT 2 - 2 BED 3P FLAT - 61 SQM
- UNIT 3 - 1 BED 2P FLAT - 54 SQM



For Approval

revision	description	date
H	REVISED FOLLOWING COMMENTS FROM PLANNERS	21.03.17 IRMB
G	REVISED FOLLOWING COMMENTS FROM PLANNERS	22.01.17 IRMB
F	SCHEME REVISED FOR RESUBMISSION	05.11.16 IRMB
E	REVISED FOLLOWING COMMENTS FROM PLANNING DEPARTMENT	17.11.15 IRMB
D	REVISED FOLLOWING COMMENTS FROM CLIENT	18.09.15 IRMB
C	REVISED FOLLOWING COMMENTS FROM PLANNING DEPARTMENT	01.08.15 IRMB
B	REVISED FOLLOWING COMMENTS FROM CLIENT	29.06.15 IRMB
A	REVISED FOLLOWING COMMENTS FROM PLANNING DEPARTMENT	20.11.14 IRMB

ga
GENESIS ARCHITECTS LTD
7 St Margarets Road, Stanswood Abbots
Ware Hertfordshire SG12 8EP
T: 01920 877998
F: 01920 877998
E: genesis@genesisarchitects.co.uk
W: www.genesisarchitects.ltd.uk

client
Woodham Properties Ltd

project
THE ADMIRAL MANN PH
LONDON
N7 0BP

title
PROPOSED
GROUND AND FIRST FLOOR PLANS

date NOV 16 scale AS SHOWN drawn IRMB

drawing no GAL 220 (PC) 005 H