

General Notes:

- 1) All dimensions in millimeters, unless otherwise stated.
- 2) This drawing to be read in conjunction with the employers requirements specification and all other contract information.
- 3) All designs are indicative to show design intent. Contractor to fully detail all designs in accordance with M&E specification and employers requirements prior to installation.
- 4) All layouts to be agreed by the employer prior to installation.
- 5) Earthing throughout the installation to be carried out in accordance with the latest IEE wiring regulations.

Lighting Notes:

- 1) Refer to specification for luminaire schedule.
- 2) Refer to specifications for circuit details.
- 3) Precise location of luminaires to be agreed with all stakeholders prior to installation.
- 4) Wheelchair units to have large rocker type switches.
- 5) Wheelchair units to include the future provision of 2 way switching within the principle bedroom.
- 6) Where loft spaces are accessible, the contractor shall allow for the provision of a luminaire and light switch in a suitable position.

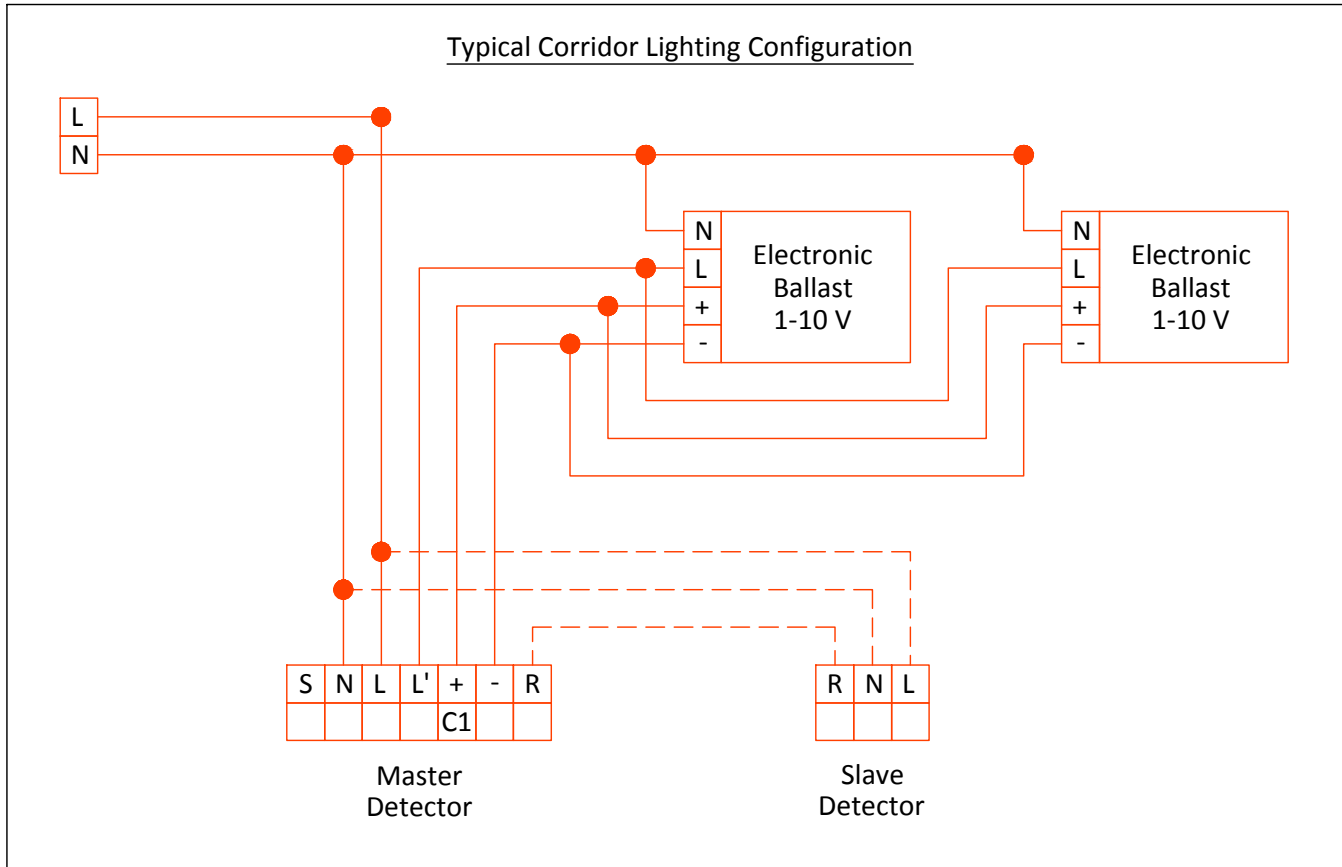
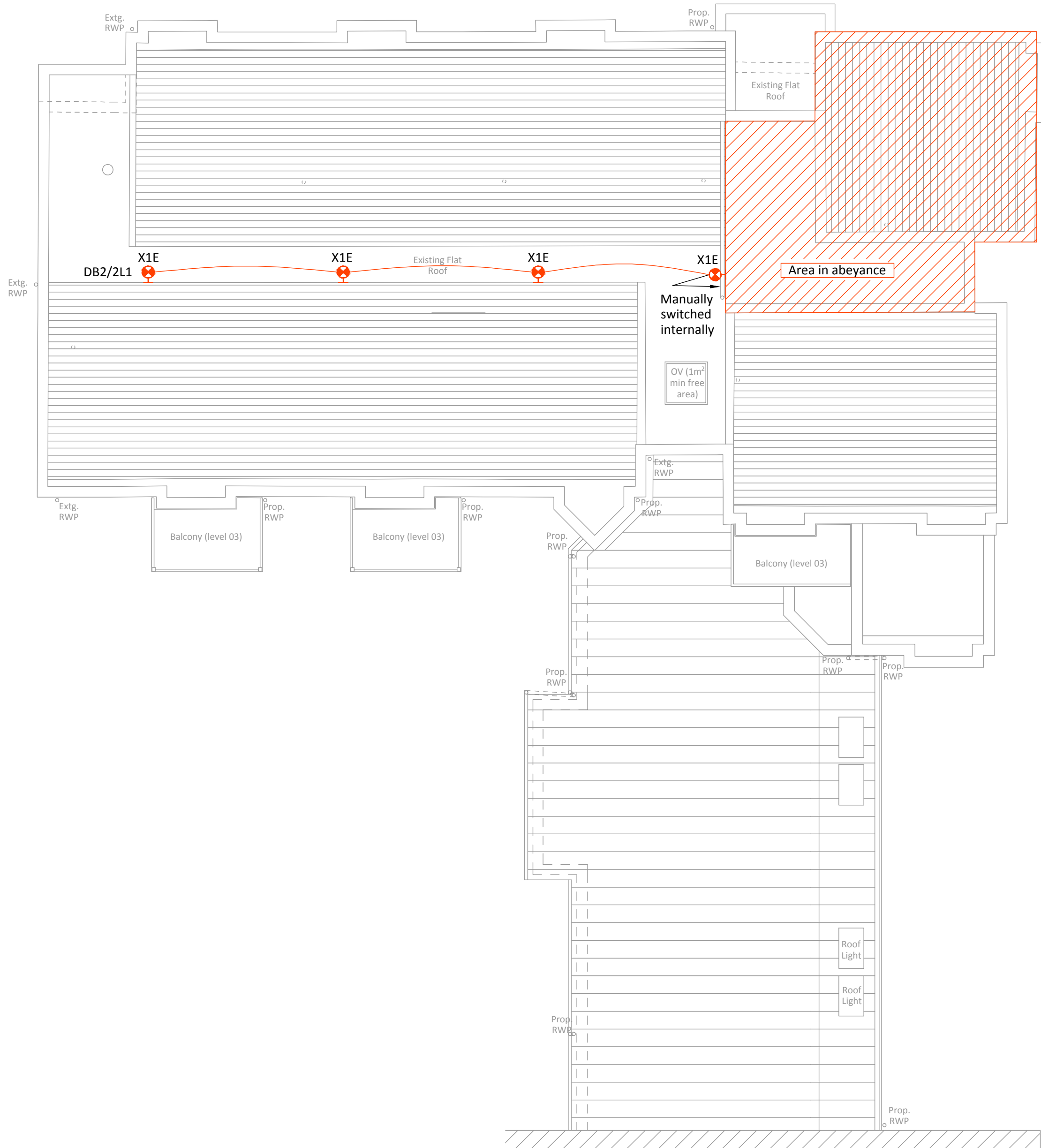
Legend:

- Switch Line
- - - Circuit Line
- Ceiling Mounted Light Fitting \*
- Ceiling Recessed Downlight \*
- Wall Mounted Light Fitting \*
- Ceiling Mounted Light Fitting \*
- Shaver Socket
- 1 Way Light Switch
- 2 Way Light Switch
- Intermediate Light Switch
- PIR & Integral Photocell Detector
- Absence Detector
- Photocell Detector

\* See Luminaire Schedule

Abbreviations

- G Gang
- N Neon Indicator



REV	DESCRIPTION	DATE	INIT	CHKD
-----	-------------	------	------	------



Client *Rydon*

Project **Ashton Court**

Title **Roof Lighting Layout**

Scale	Date	Drawn By	Checked By	Project No:	Drawing No:	Revision
1:100@A1	26.10.16	RP	OD	K160624	E (0)111	

St John's House 1a Knoll Rise Orpington Kent BR6 0JX  
01689 888222 orpington@calfordseaden.co.uk  
calfordseaden LLP is a Limited Liability Partnership Registered in England & Wales number OC315838

ORPINGTON | LONDON | BIRMINGHAM | SOUTHEND-ON-SEA | WINCHESTER

calfordseaden.co.uk

PRELIMINARY