

Power Legend:

- Switch Line
- - - Circuit Line
- ☐ Distribution Board
- ☐ TPN Isolator
- ☐ Isolator
- ☐ Service Head
- ☐ Meter
- ☐ Control Panel
- ☐ Interface
- ⚡ 13A Twin Switched Socket Outlet
- ⚡ 13A Twin Lockable Socket Outlet
- ⚡ 13A Single Unswitched Socket Outlet
- ⚡ 13A Single Lockable Socket Outlet
- ⚡ 13A Unswitched Fused Connection Unit
- ⚡ 13A Switched Fused Connection Unit

General Notes:

- 1) All dimensions in millimeters, unless otherwise stated.
- 2) This drawing to be read in conjunction with the employers requirements specification and all other contract information.
- 3) All designs are indicative to show design intent. Contractor to fully detail all designs in accordance with M&E specification and employers requirements prior to installation.
- 4) All layouts to be agreed by the employer prior to installation.
- 5) Contractors to familiarise themselves with energy strategy approved at planning, along with other consented documents.
- 6) Earthing throughout the installation to be carried out in accordance with the latest IEE wiring regulations.

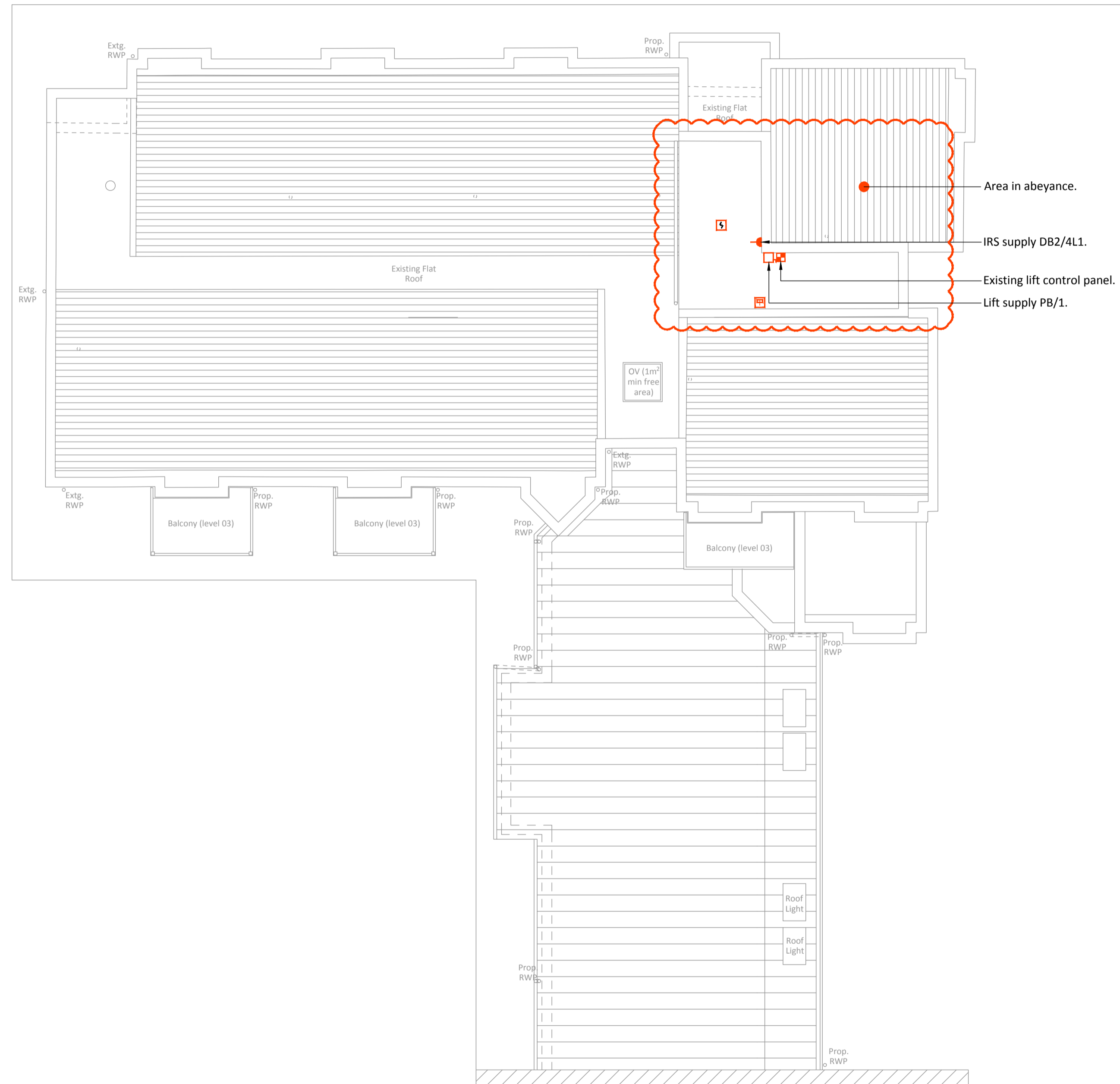
Power Notes:

- 1) Contractor to make allowance for connections between any power supplies / interface to associated equipment.
- 2) Precise location of equipment to be agreed with all stakeholders prior to installation.
- 3) See distribution board schedule for circuit arrangement / details.
- 4) Kitchen small power and ancillary layout to be confirmed with final kitchen layout.
- 5) All cable drops within the landlords areas to be protected by earthed metallic conduit within walls.
- 6) Access control system to be interfaced with the fire alarm.
- 7) Duty manager(s) to be provided with remote handset for warden call & access control system.
- 8) Residents fire alarm to be linked to the warden call system, to notify the duty manager(s) of activations via a distinctive tone.
- 9) Fire alarm system to comply with the fire strategy, fire officers recommendations and BS 5839-1.

- ☐ MG Multi-Gang Grid Switch
- ☐ Flex Outlet Plate
- ☐ Cooker Point and Connection Plate
- ☐ PV Inverter
- ☐ EDD Energy Display Device
- ☐ FAP Fully Accessible Fire Alarm Panel
- ☐ Fire Alarm Smoke Detector
- ☐ Fire Alarm Smoke Detector with Sounder
- ☐ Fire Alarm Heat Detector
- ☐ AOV Manual Opening Device
- ☐ Tamperproof Manual Call Point
- ☐ PIR for window AOVs
- ☐ Carbon Monoxide Detector
- ☐ Beacon
- ☐ DEP Door Entry Panel
- ☐ Proximity Reader
- ☐ Access Control Intercom
- ☐ Maglock
- ☐ CCTV Dome Camera
- ☐ External CCTV Camera
- ☐ Door Hold Open Device
- ☐ Door Bell Push
- ☐ Door Release Button & Break Glass
- ☐ Door Bell Sounder
- ☐ TV Outlet
- ☐ Telephone Point
- ☐ SM Warden Call Speech Module
- ☐ Warden Call Door Contact
- ☐ Warden Call Ceiling Pull Cord
- ☐ Thermostat

Abbreviations:

- B Boiler
- BA Burglar Alarm
- CH Cooker Hood
- CYL Cylinder
- d Dimmer Switch
- DP Distribution Point
- DW Dishwasher
- FH Future Hoist
- FL Future Lift
- FS Future Shower
- G Gang
- IL Induction Loop
- N Neon Indicator
- OV Oven
- TR Towel Rail
- UFH Under Floor Heating Manifold
- WC Wheelchair Charging Point
- WM Washing Machine



REV	DESCRIPTION	DATE	INIT	CHKD

PRELIMINARY

Client **Rydon**

Project **Ashton Court**

Title **Roof Small Power & Ancillary Layout**

Scale **1:100@A1** Date **29.11.16** Drawn By **RP** Checked By **OD** Project No: **K160624** Drawing No: **E (0)105** Revision

St John's House 1a Knoll Rise Orpington Kent BR6 0JX
01689 888222 orpington@calfordseaden.co.uk
calfordseaden LLP is a Limited Liability Partnership Registered in England & Wales number OC315838
ORPINGTON | LONDON | BIRMINGHAM | SOUTHEAST-ON-SEA | WINCHESTER

calfordseaden.co.uk