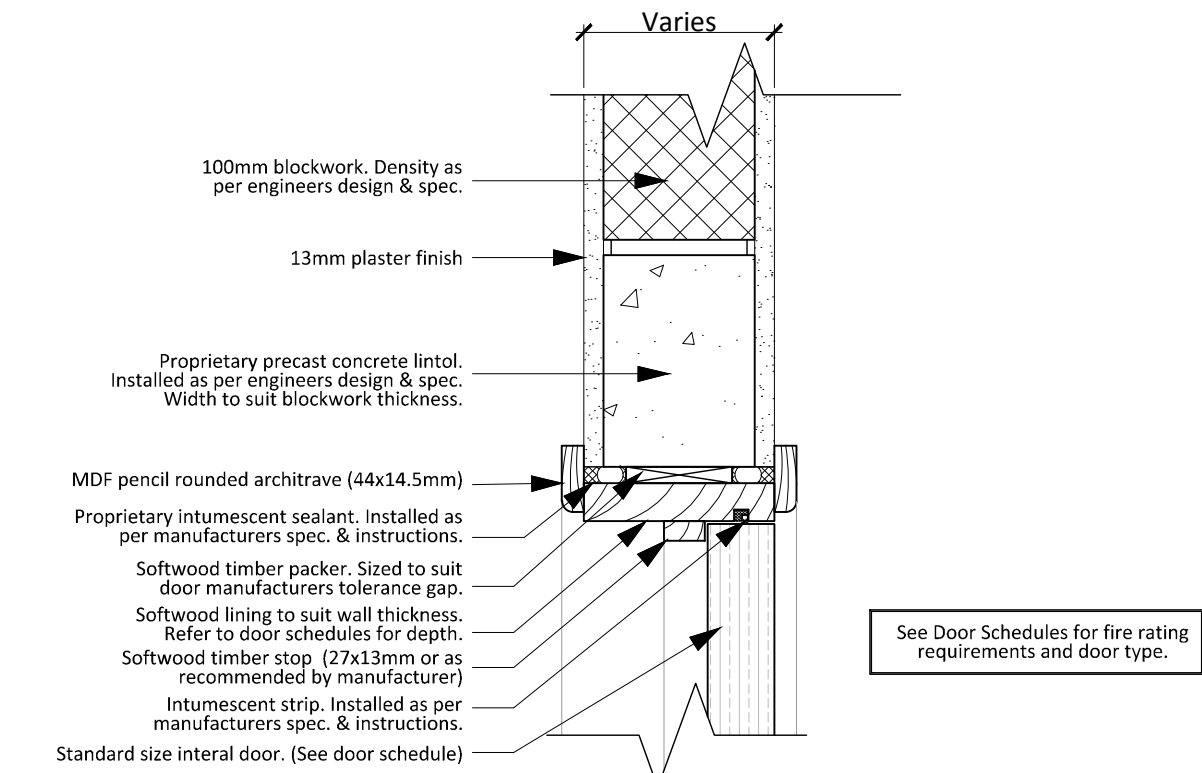
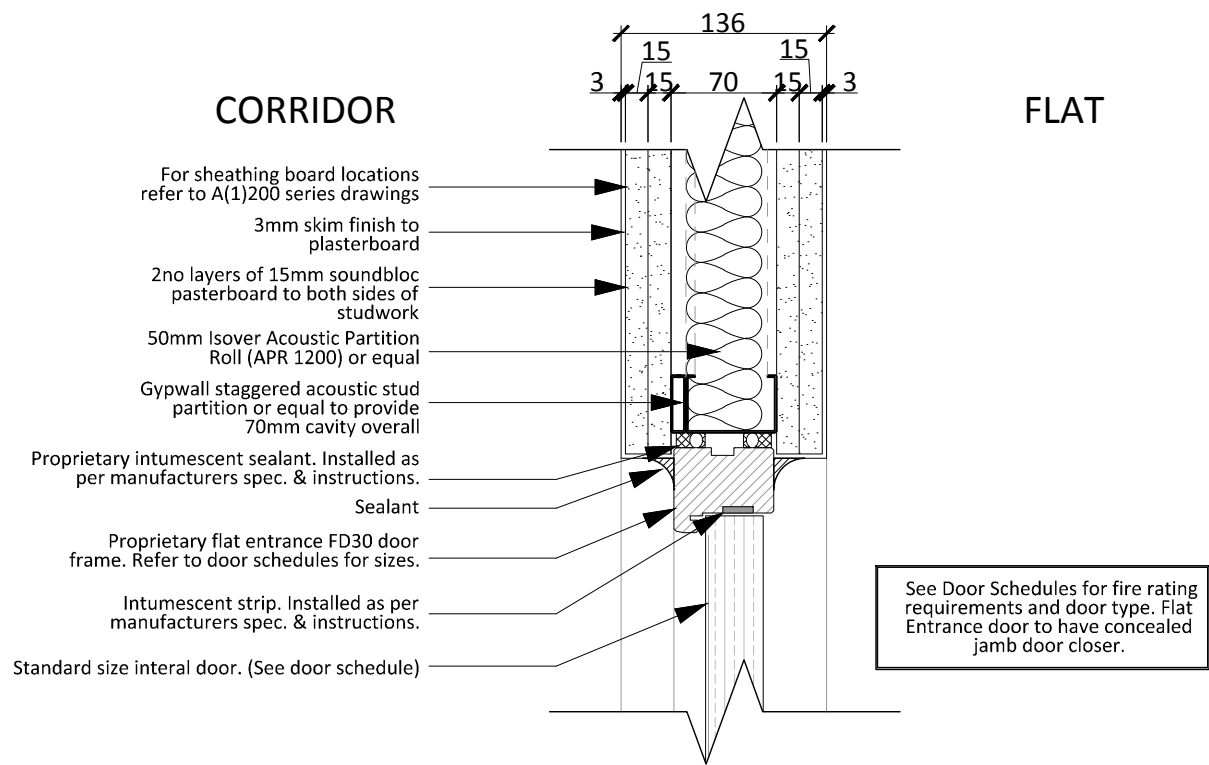


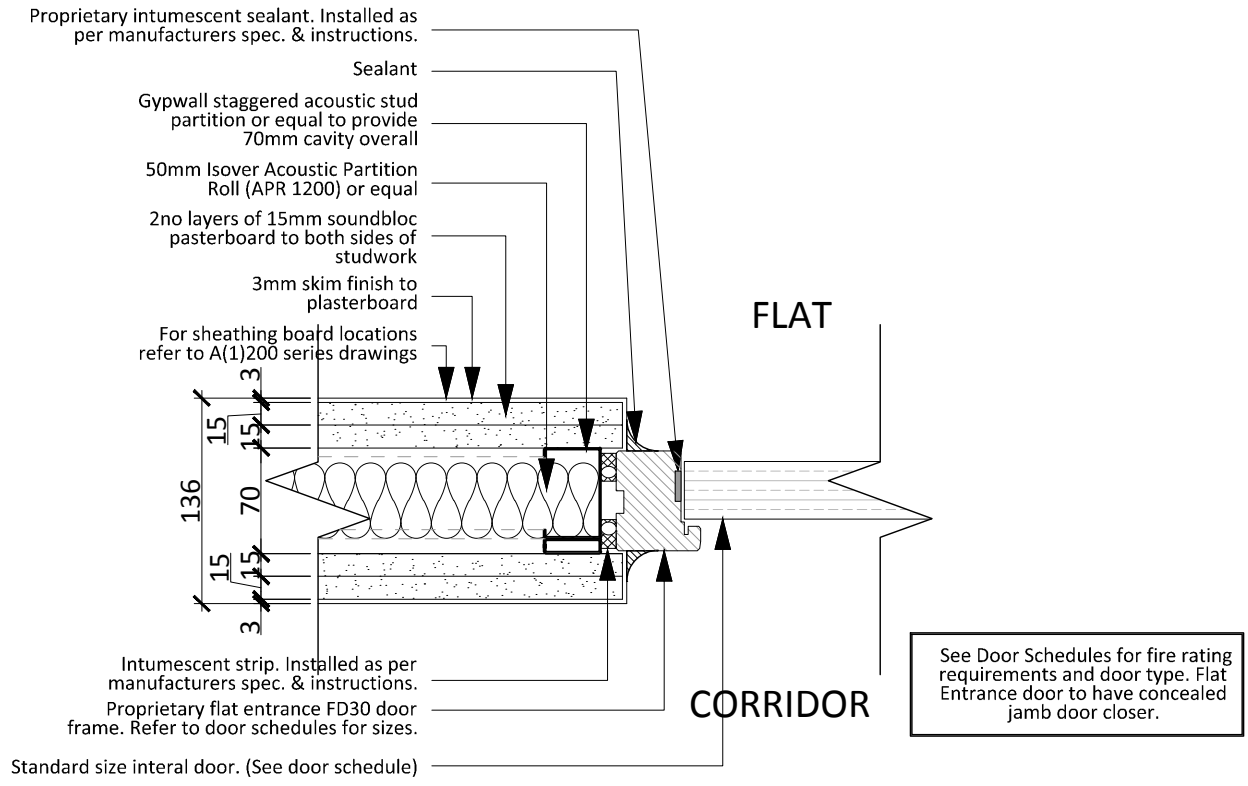
DR10 - Typical Door Jamb In Blockwork Wall  
1 : 5



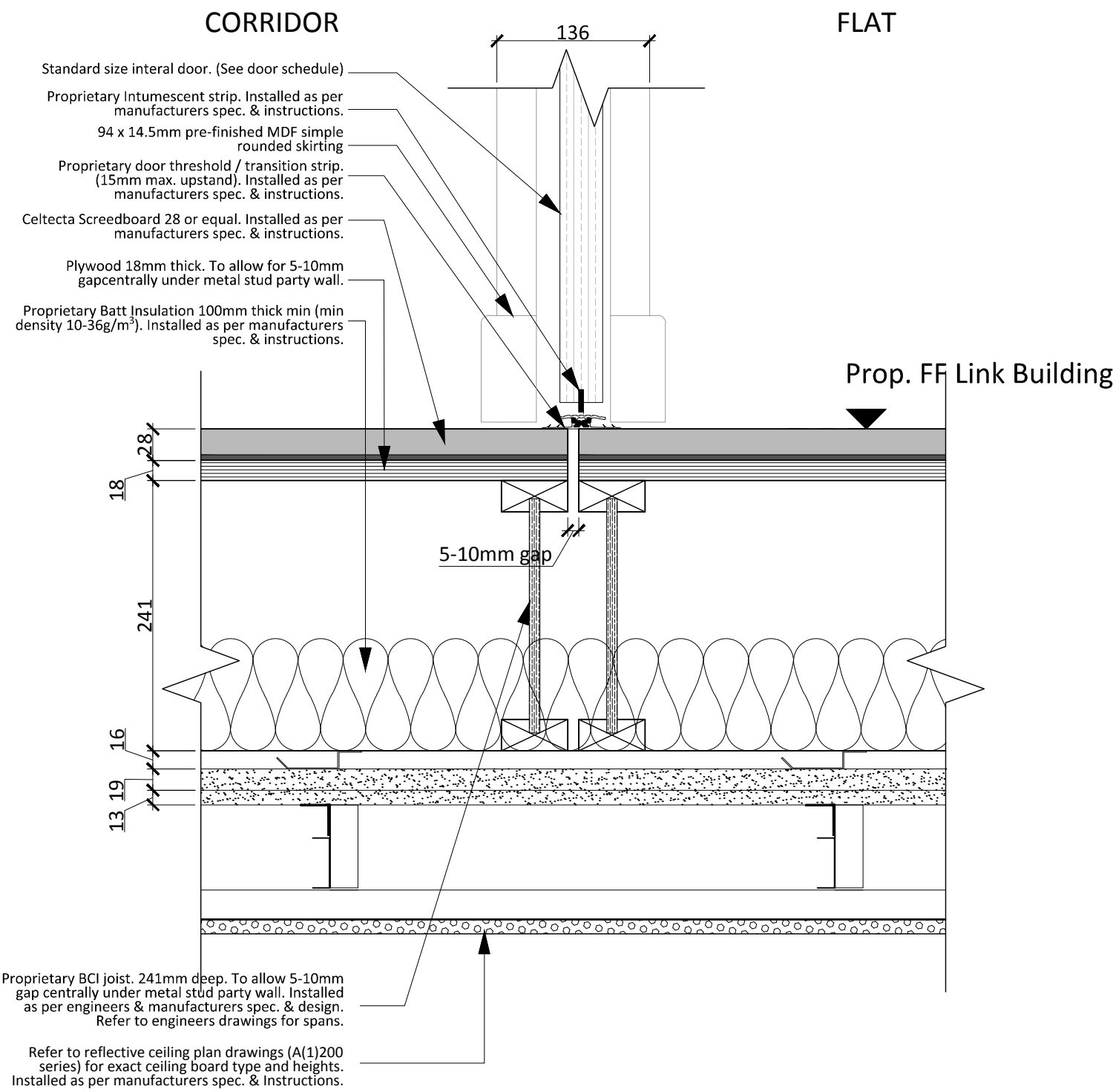
DR09 - Typical Door Head In Blockwork Wall  
1 : 5



DR11 - Typical Door Head In Metal Stud Party Wall  
1 : 5



DR12 - Typical Door Jamb In Metal Stud Party Wall  
1 : 5



DR13 - Flat Entrance Door Threshold In Metal Stud Party Wall  
1 : 5

REV	DESCRIPTION	DATE	INIT	CHKD
-----	-------------	------	------	------



Client  
Rydon  
Project  
Ashton Court, Camden Park Road, Camden  
Title  
Door Details (Sheet 2)

Scale  
1:5@A1  
Date  
07.12.16  
Drawn By  
PMC  
Checked By  
CIA  
Project No:  
K160423  
Drawing No:  
A (1)521  
Revision  
~

St Johns House 1A Knoll Rise Orpington Kent BR6 0JX  
01689 888222 orpington@calfordseaden.com  
calfordseaden LLP is a Limited Liability Partnership Registered in England & Wales number OC15938

ORPINGTON | LONDON | BIRMINGHAM | CAMBRIDGE | SOUTHEND-ON-SEA | WINCHESTER

calfordseaden.com