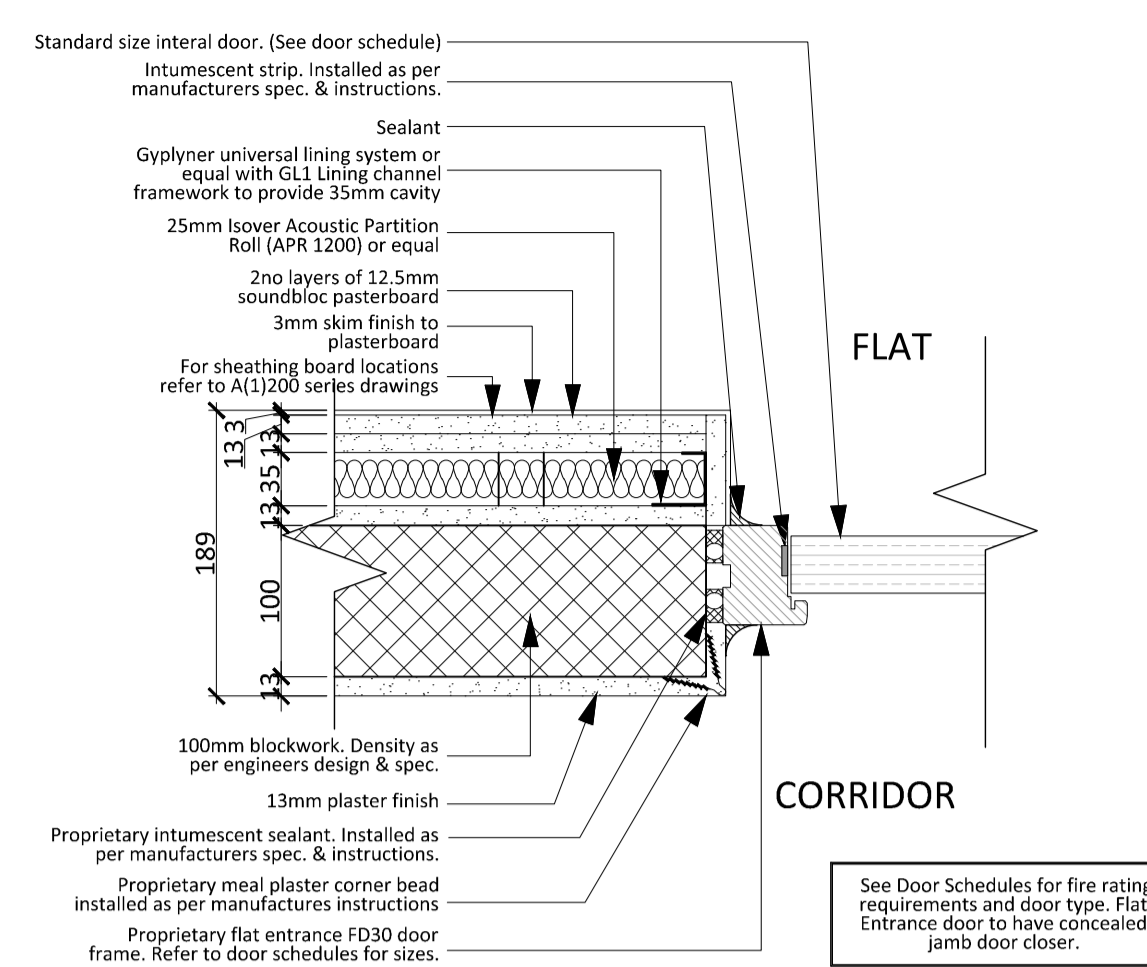
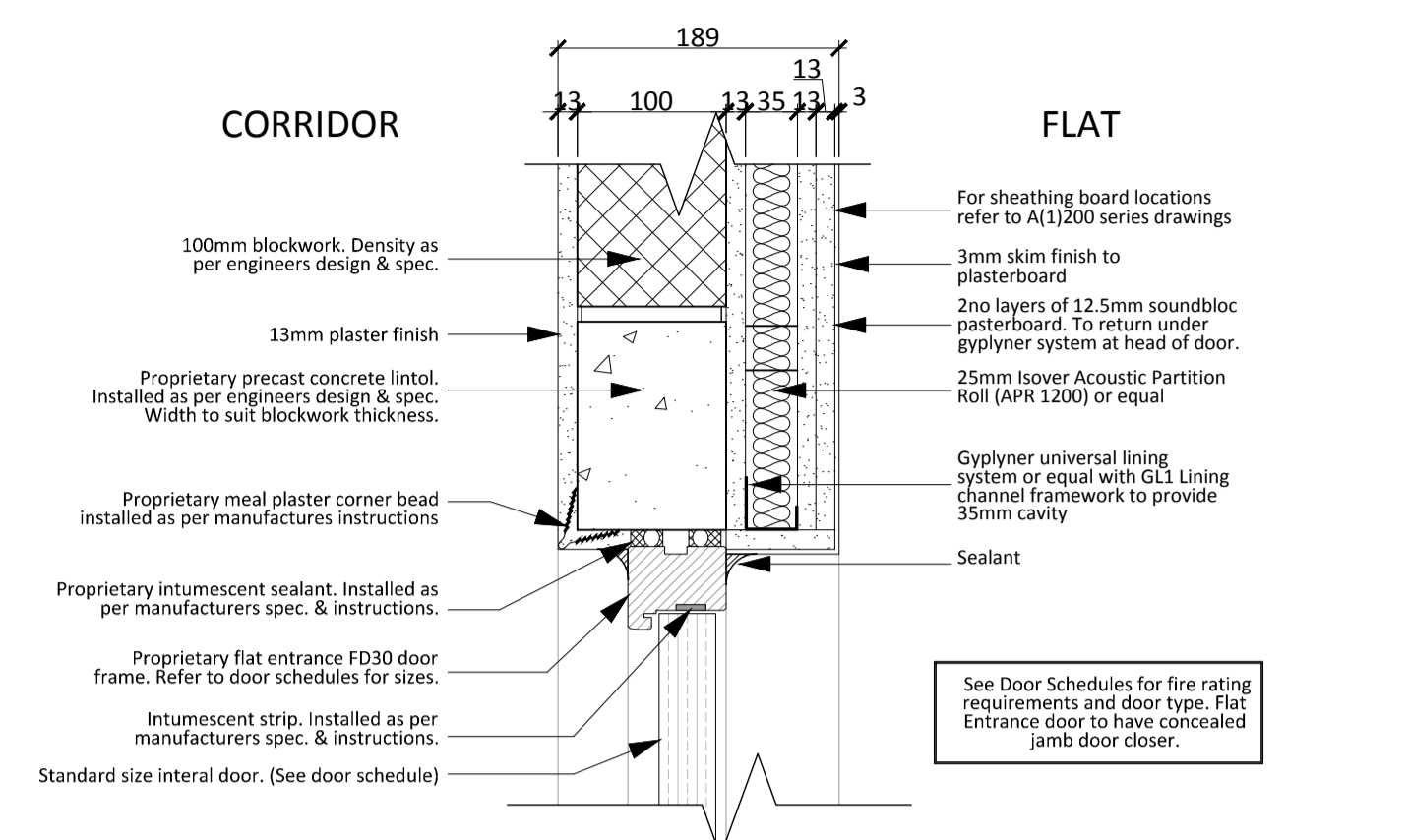


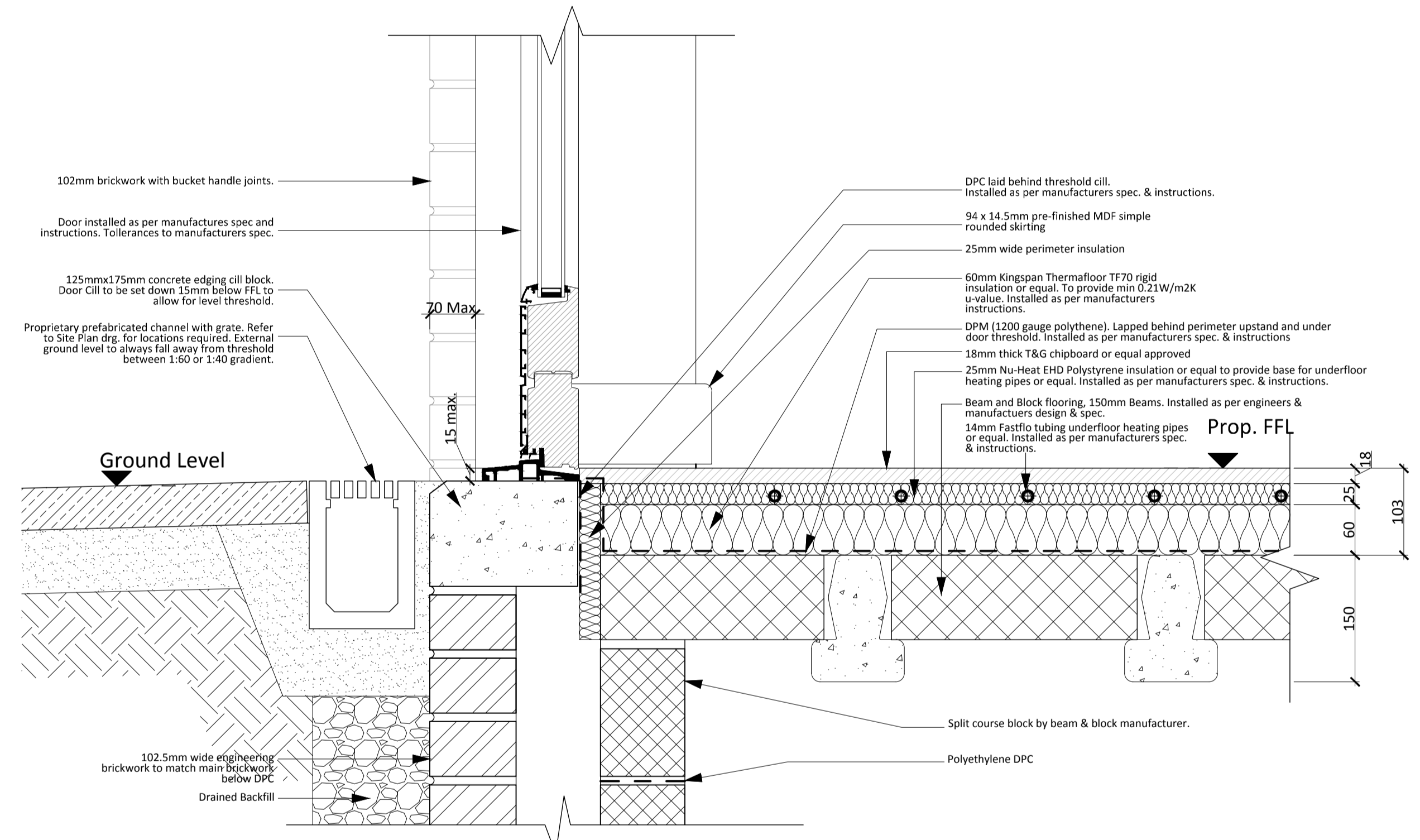
DR02 - Typical Door Head In Ext. Wall 1 : 5



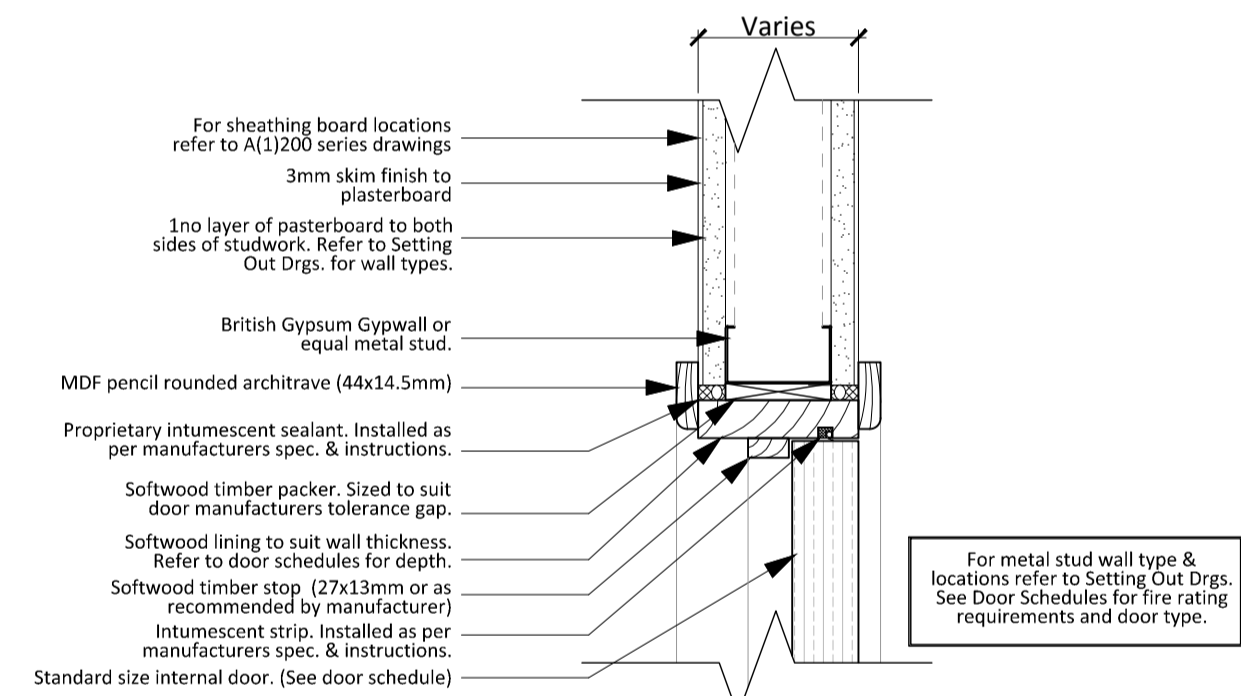
DR06 - Typical Door Jamb In Blockwork/Gyplner Wall 1 : 5



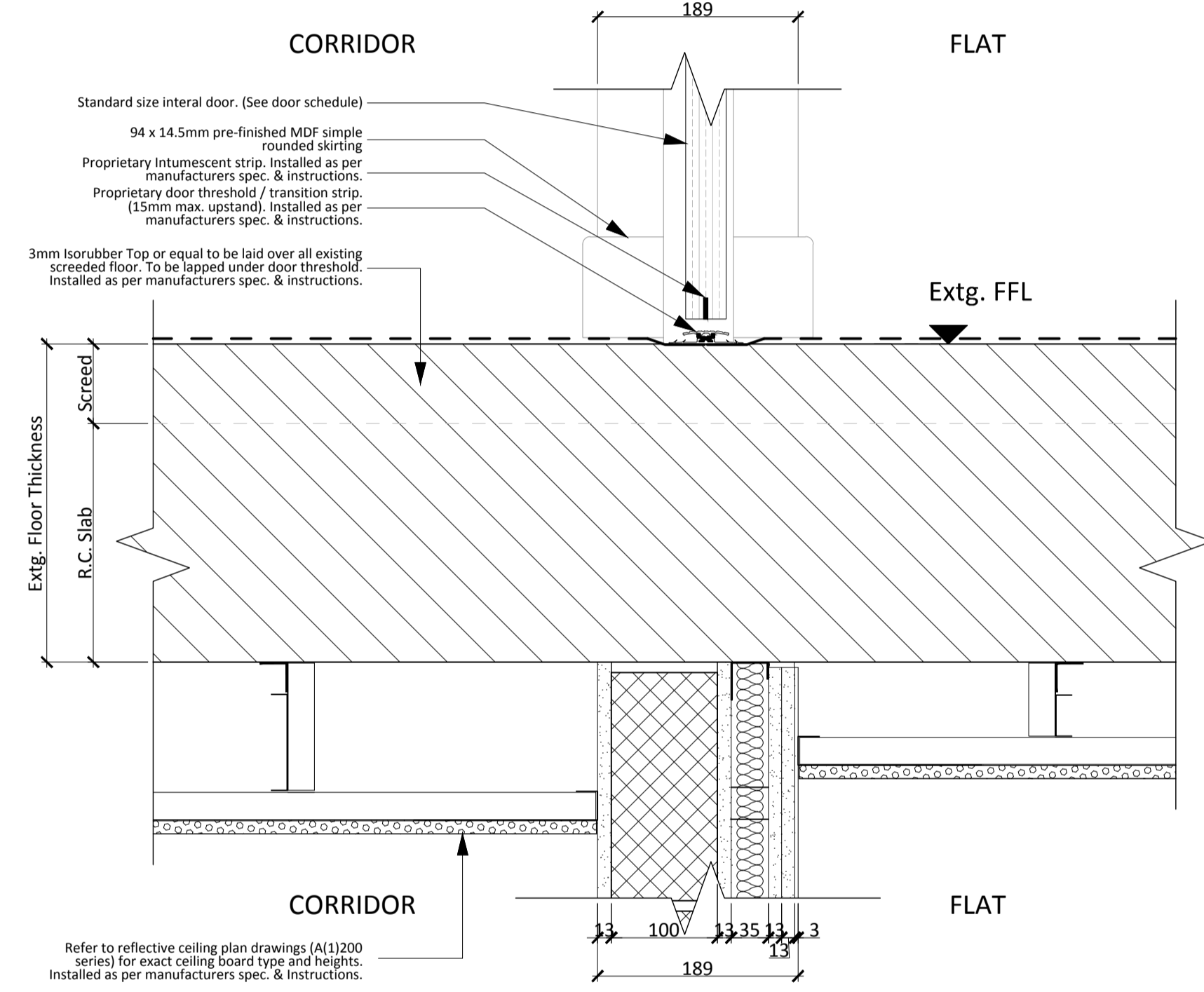
DR05 - Flat Entrance Door Head In Blockwork/Gyplner Wall 1 : 5



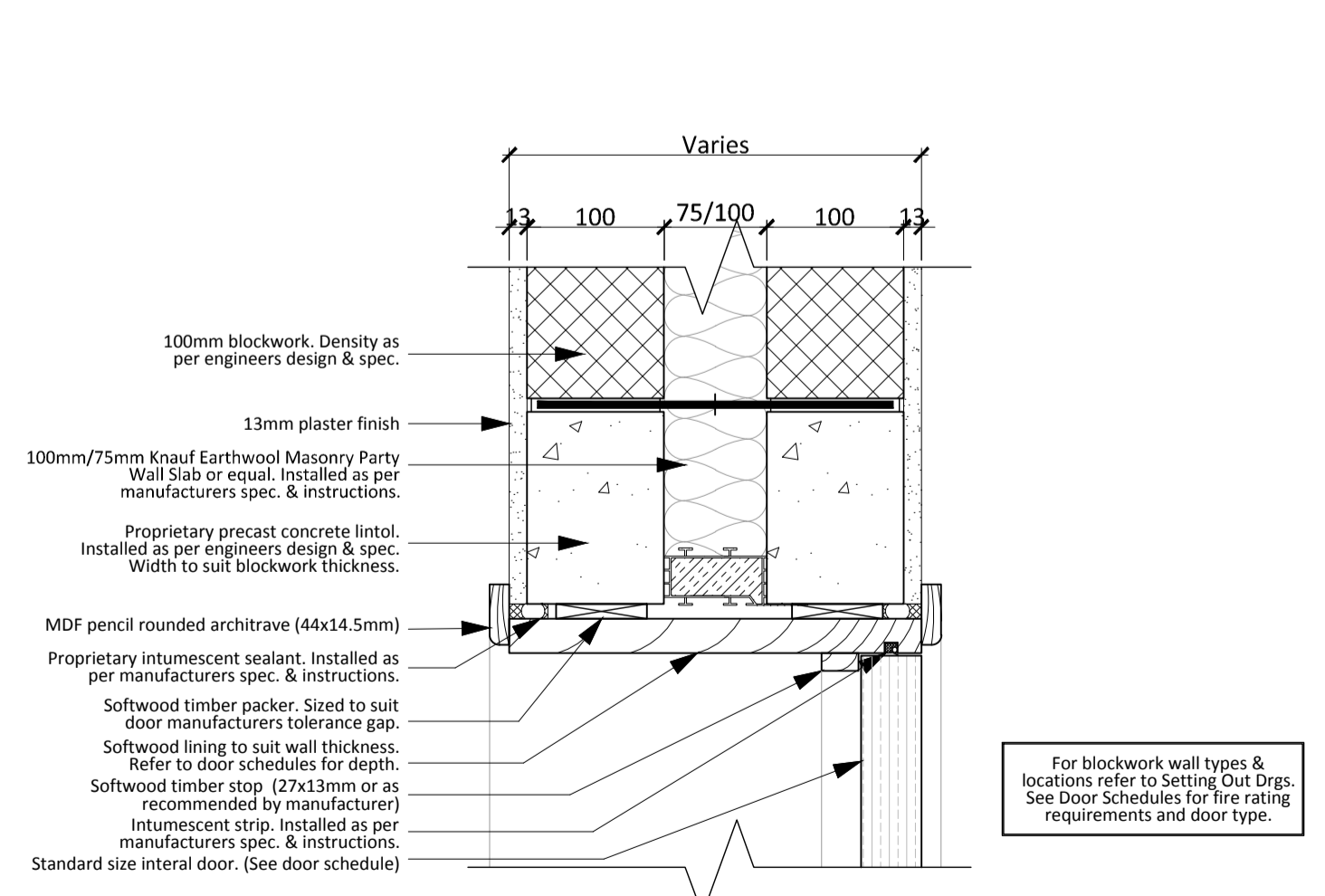
DR01 - Typical Door Threshold In Ext. Wall 1 : 5



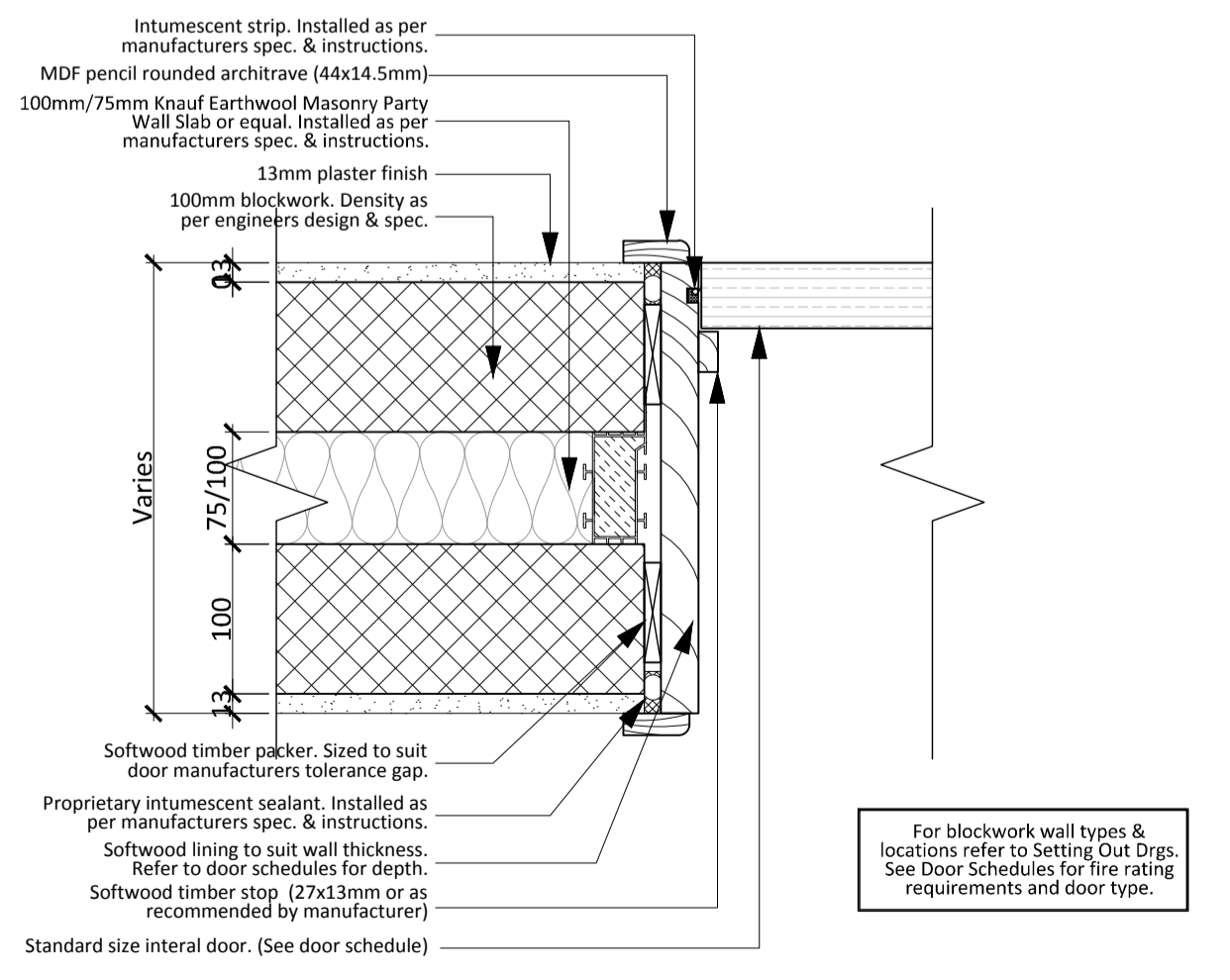
DR03 - Typical Door Head In Metal Stud Wall 1 : 5



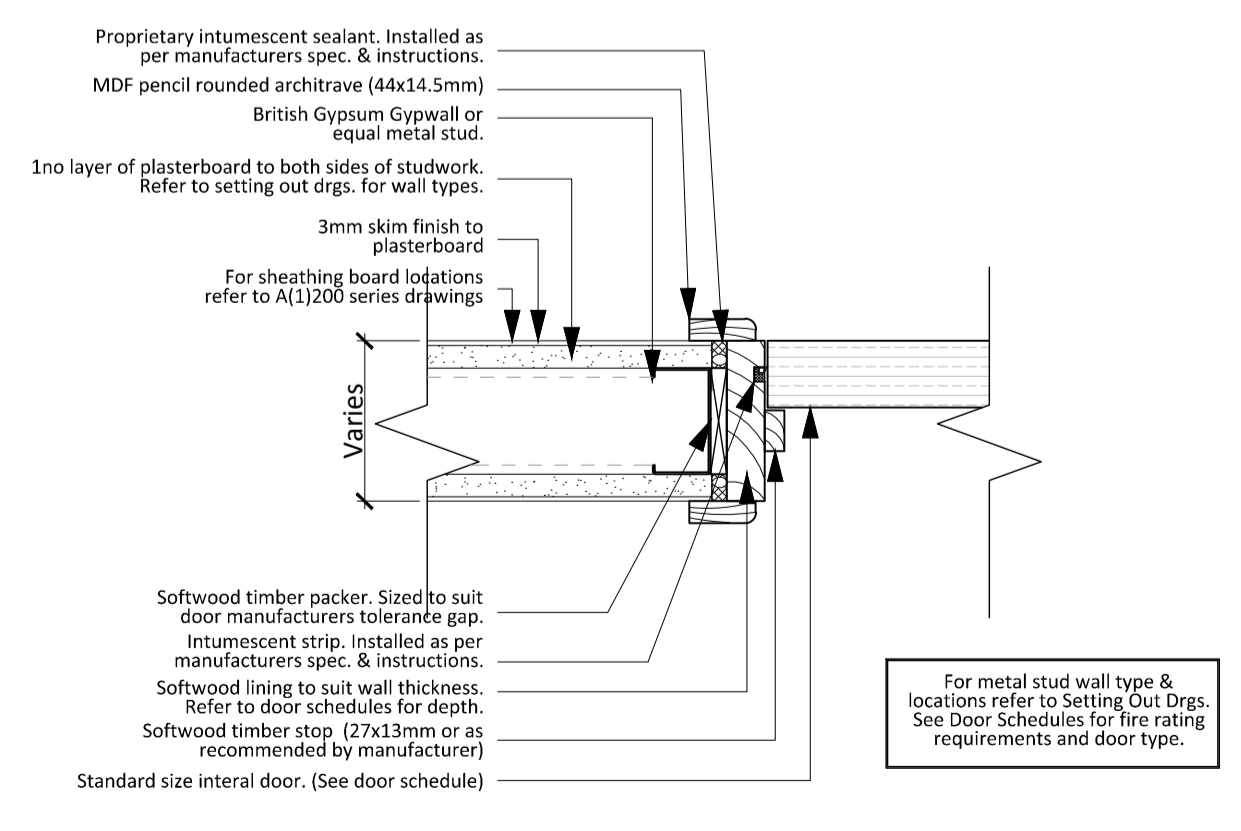
DR14 - Flat Entrance Door Threshold In Blockwork/Gyplner Wall 1 : 5



DR07 - Typical Door Head In Masonry Party Wall 1 : 5



DR08 - Typical Door Jamb In Masonry Party Wall 1 : 5



DR04 - Typical Door Jamb In Metal Stud Wall 1 : 5

REV	DESCRIPTION	DATE	INIT	CHKD

calfordseaden

Client: Rydon
 Project: Ashton Court, Camden Park Road, Camden
 Title: Door Details (Sheet 1)
 Scale: 1:5@A1
 Date: 07.12.16
 Drawn By: PMC
 Checked By: CIA
 Project No: K160423
 Drawing No: A (1)520
 Revision: ~

St Johns House 1A Knoll Rise Orpington Kent BR6 0JX
 01689 888222 orpington@calfordseaden.com
 calfordseaden LLP is a Limited Liability Partnership Registered in England & Wales number OC15838
 ORPINGTON | LONDON | BIRMINGHAM | CAMBRIDGE | SOUTHEND-ON-SEA | WINCHESTER calfordseaden.com

FOR INFORMATION