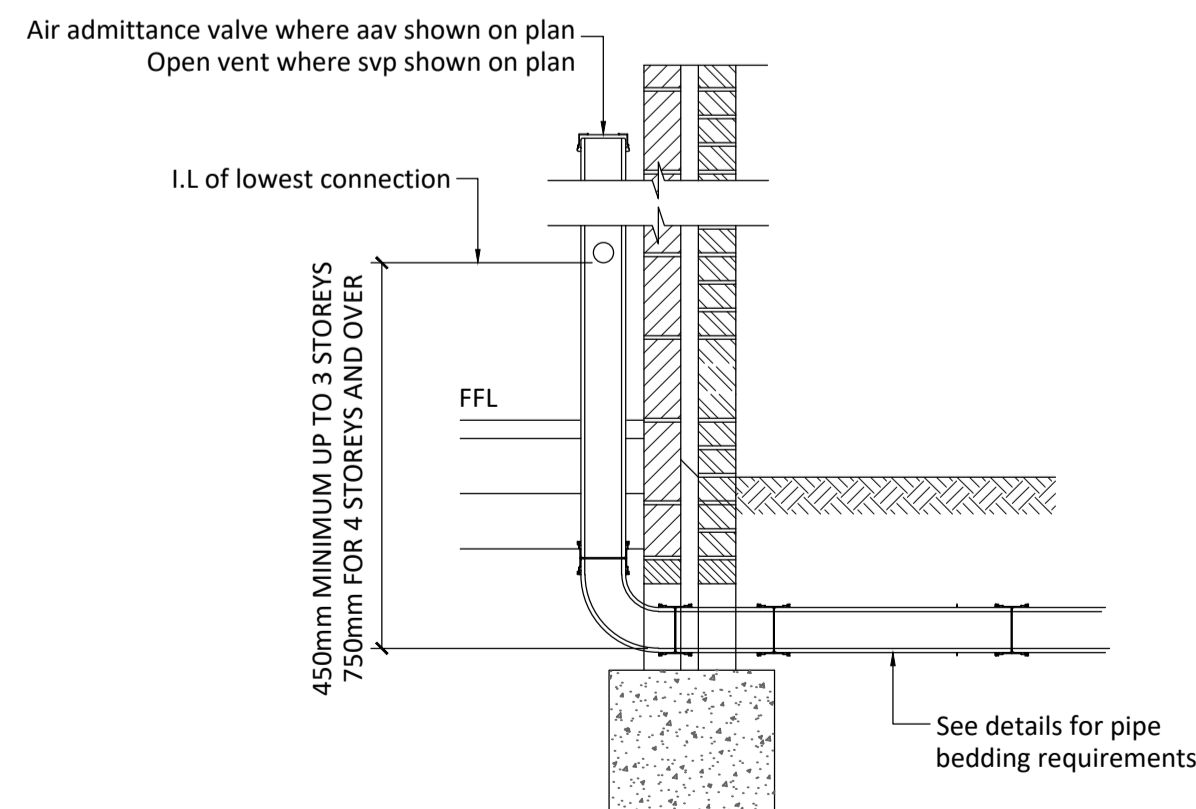
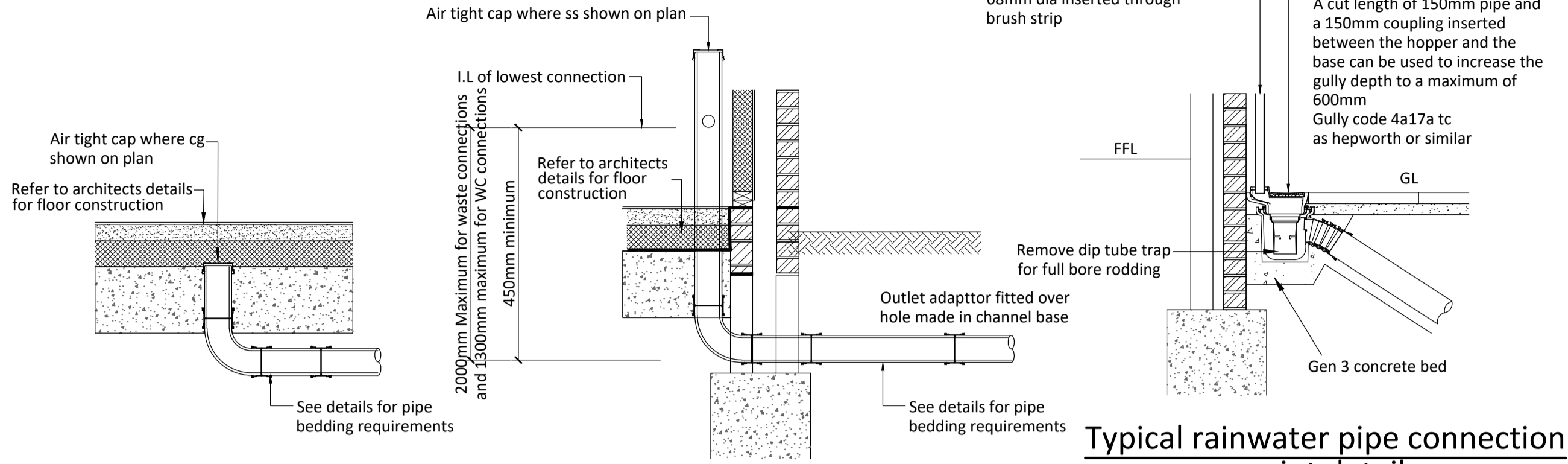


Pipe dia.	Rocker pipe length
≤600mm	0.6m
675-750mm	1.0m
>825mm	1.25m

**Typical catchpit detail - Type 2**  
(Max. depth from cover level to soffit of pipe 3.0m)  
**Alternative construction to have no concrete surround but to have thicker pc chamber walls**

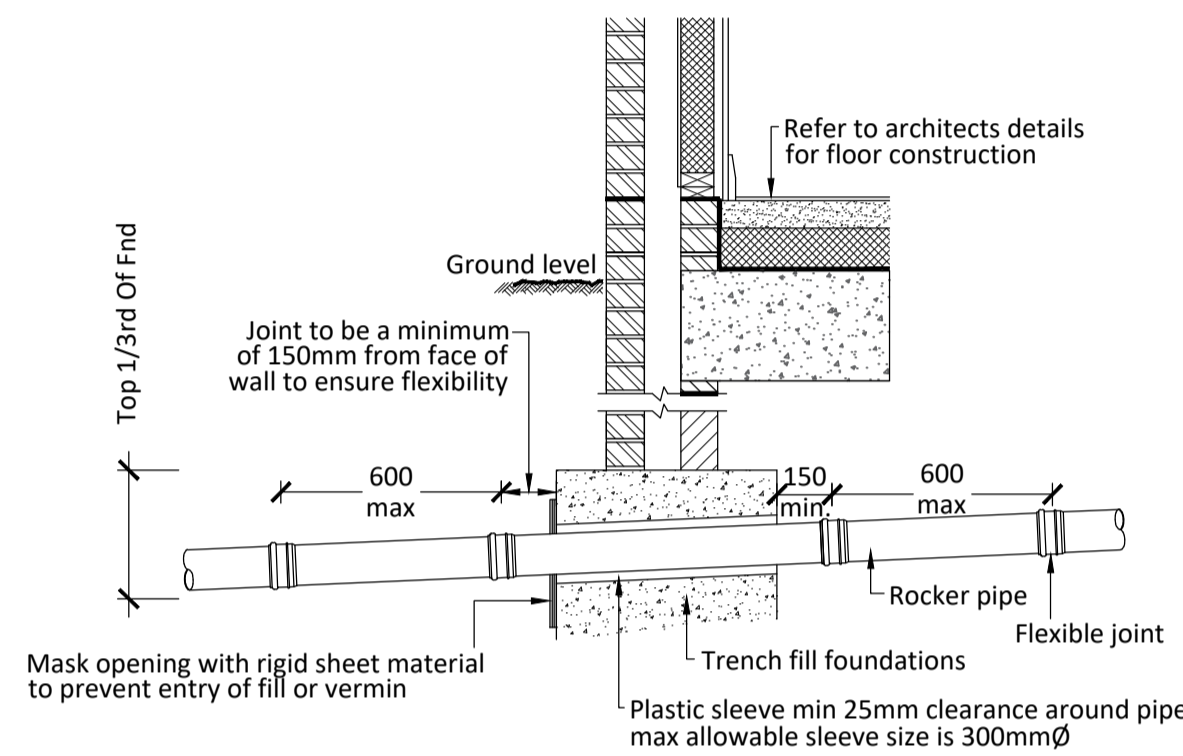


**Typical soil and vent pipe connection detail**  
Scale 1:20

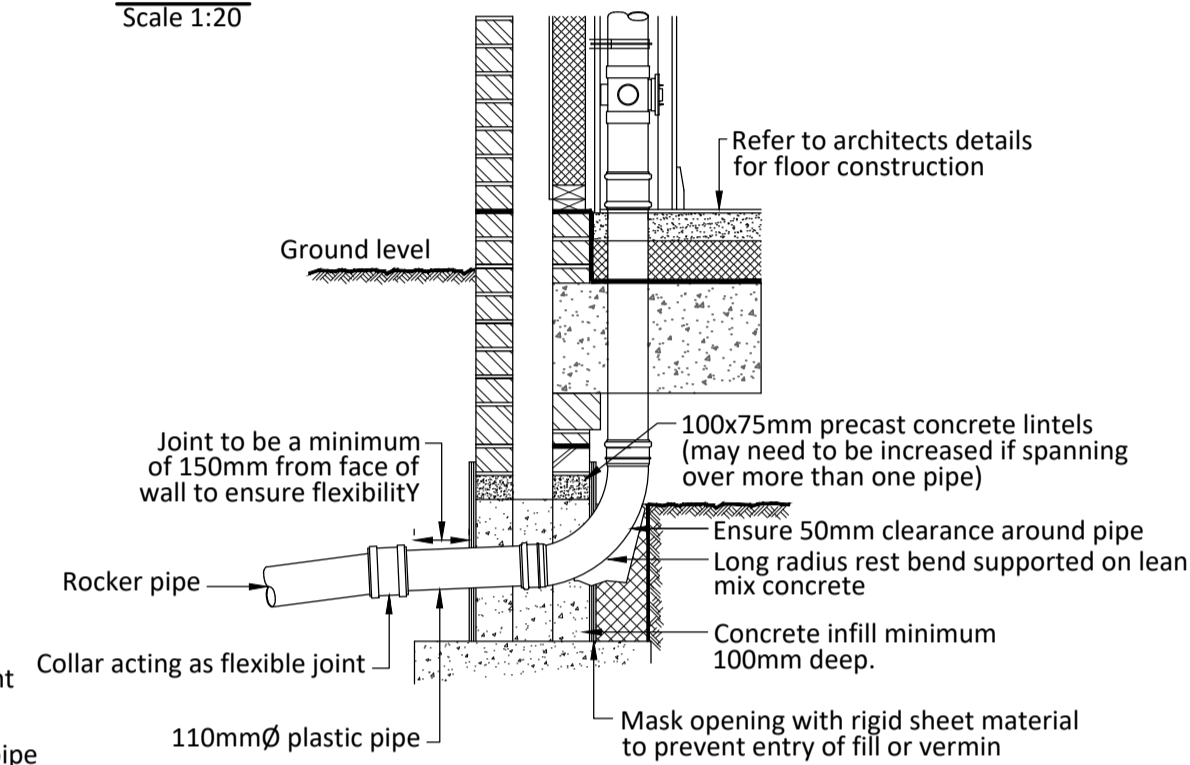


**Typical capped gully connection detail (for future connection)**  
Scale 1:20

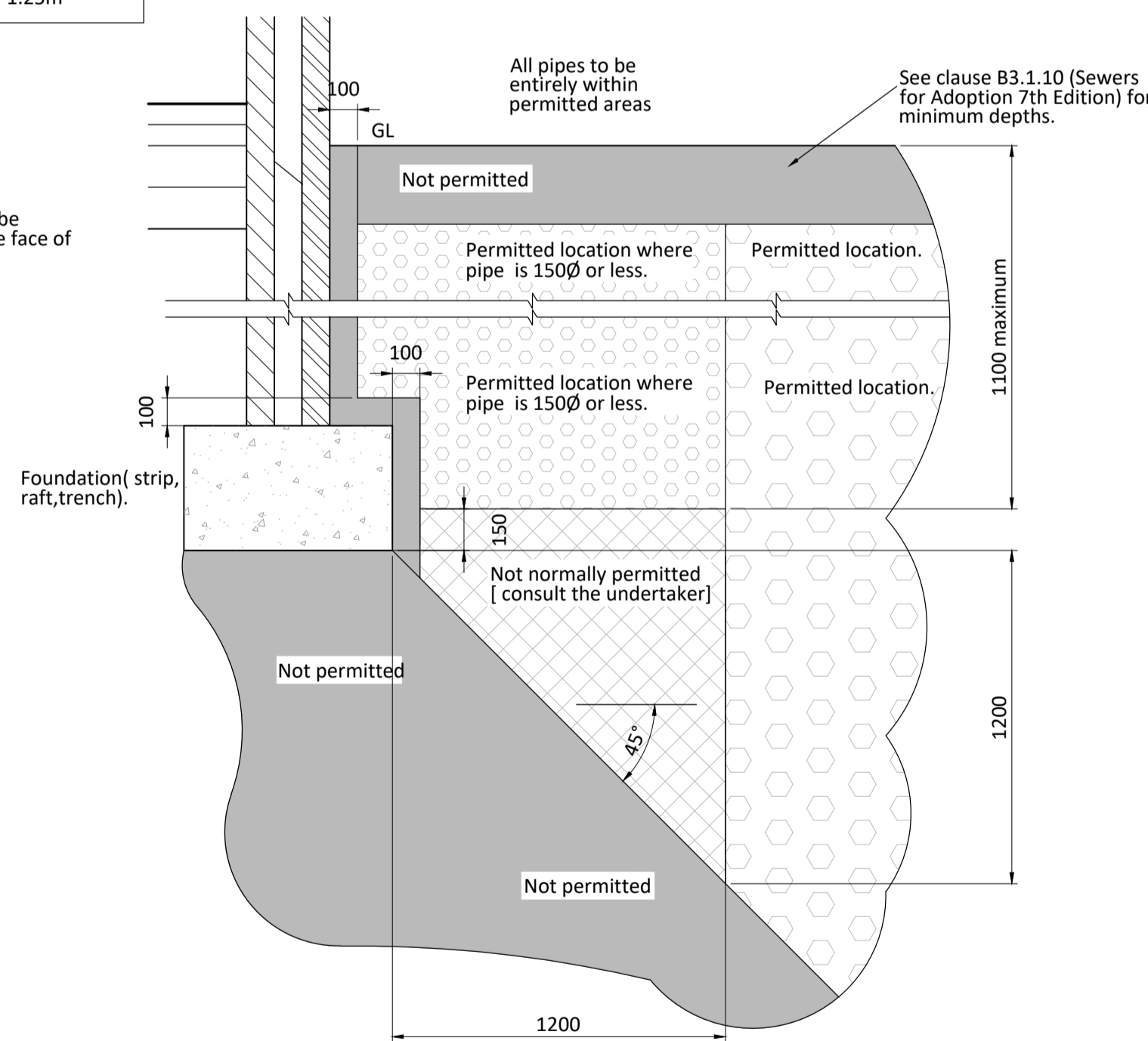
**Typical sub stack connection detail**  
Scale 1:20



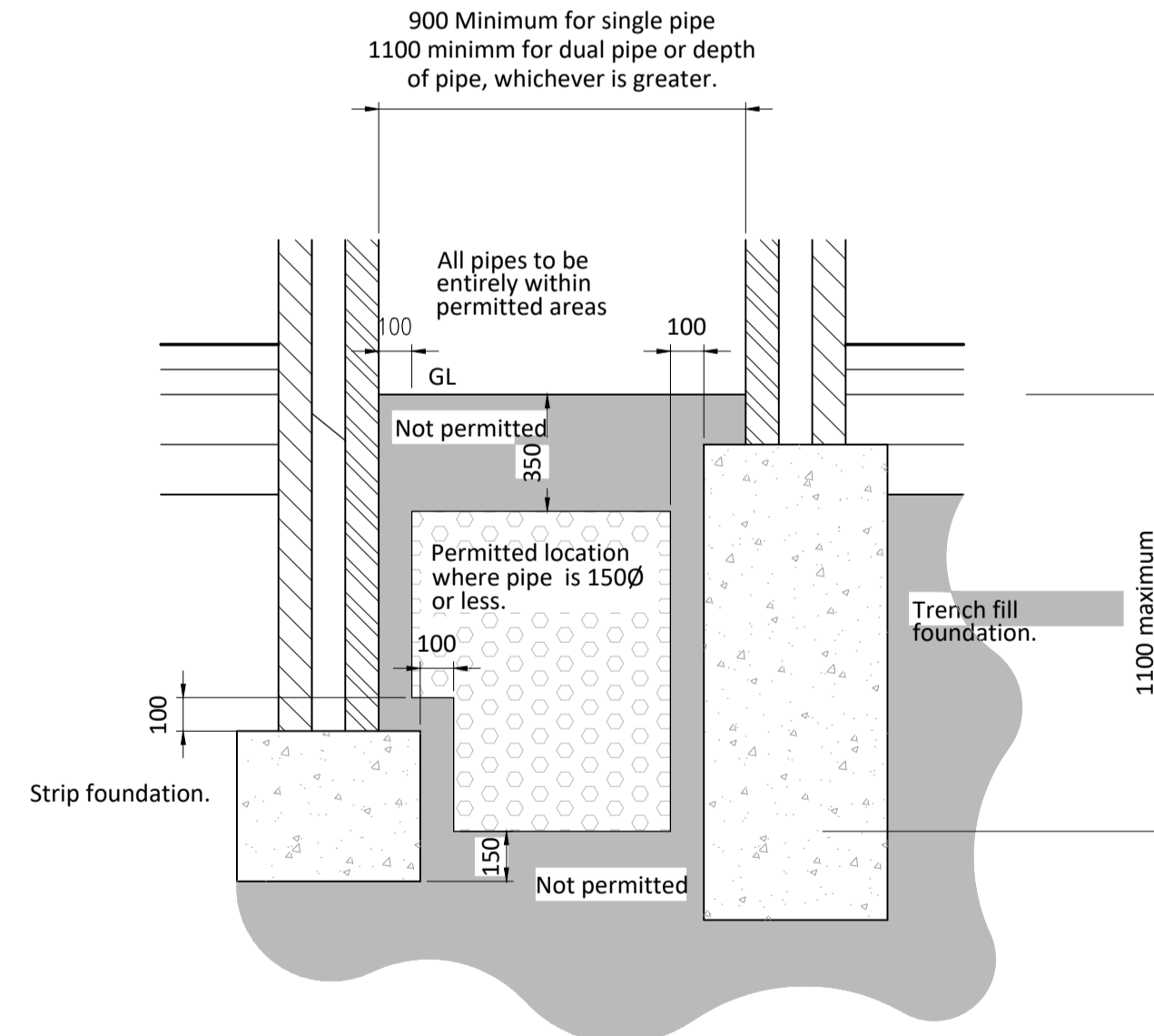
**Typical detail of pipe passing through foundation**  
Scale 1:20



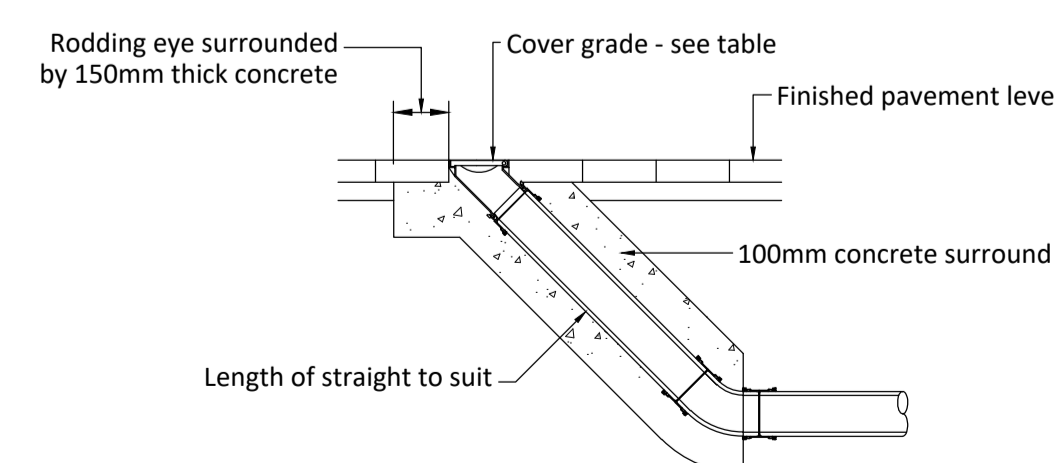
**Typical detail of pipe passing through wall**  
Scale 1:20



**Permitted location of sewers and lateral drains in proximity of buildings**  
Scale 1:20



**Permitted location of sewers and lateral drains in between buildings**  
Scale 1:20



**Typical rodding eye access point detail**  
Scale 1:20

- Notes:
- This drawing is to be read in conjunction with all other relevant subcontractor's details, in addition to all relevant architect's and m&e engineer's drawings and specifications.
  - This drawing is not to be scaled. All work must be based on figured dimensions only. All dimensions are in millimetres, unless noted otherwise. All levels are in metres, unless noted otherwise. The contractor is to verify all dimensions on site prior to starting works.
  - All building materials, components and workmanship to comply with the appropriate public health acts, building regulations, british standards and codes of practice and the appropriate manufacturer's recommendations.
  - For all specialist work see relevant drawings.
  - Any discrepancies, errors or omissions to be reported to the project co-ordinator for further instructions before commencement of works.

REV	DESCRIPTION	DATE	INIT	CHKD



Client  
**Rydon**  
Project  
Ashton Court, Camden Park Road, Camden NW1 9HE  
Title  
Drainage Details 1 of 3

Scale 1:20@A1 Date 01/02/17 Drawn By SGS Checked By CJM Project No: K160428 Drawing No: C(0)1110 - Revision

St John's House 1a Knoll Rise Orpington Kent BR6 0IX  
01689 888222 orpington@calfordseaden.co.uk  
calfordseaden LLP is a Limited Liability Partnership Registered in England & Wales number OC315838  
ORPINGTON | LONDON | BIRMINGHAM | SOUTHEND-ON-SEA | WINCHESTER

calfordseaden.co.uk