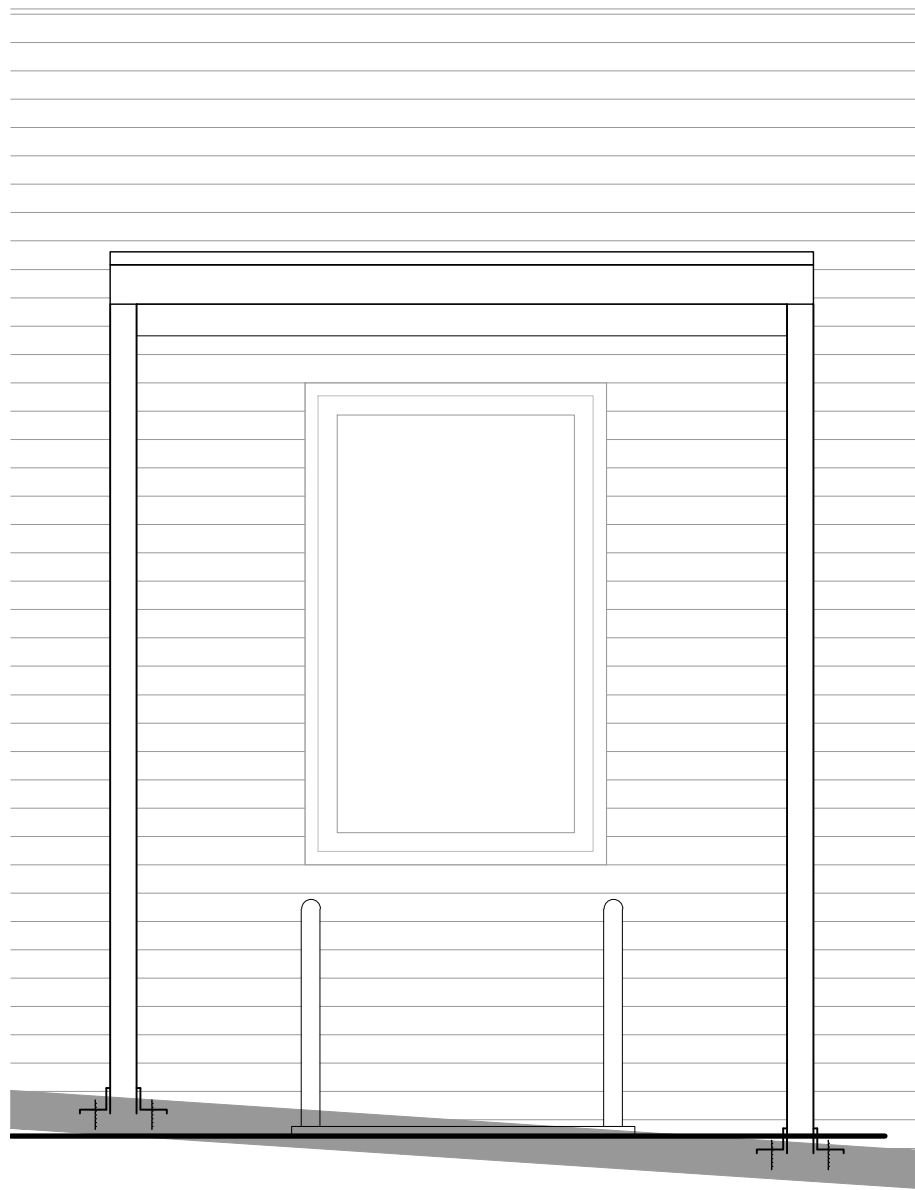
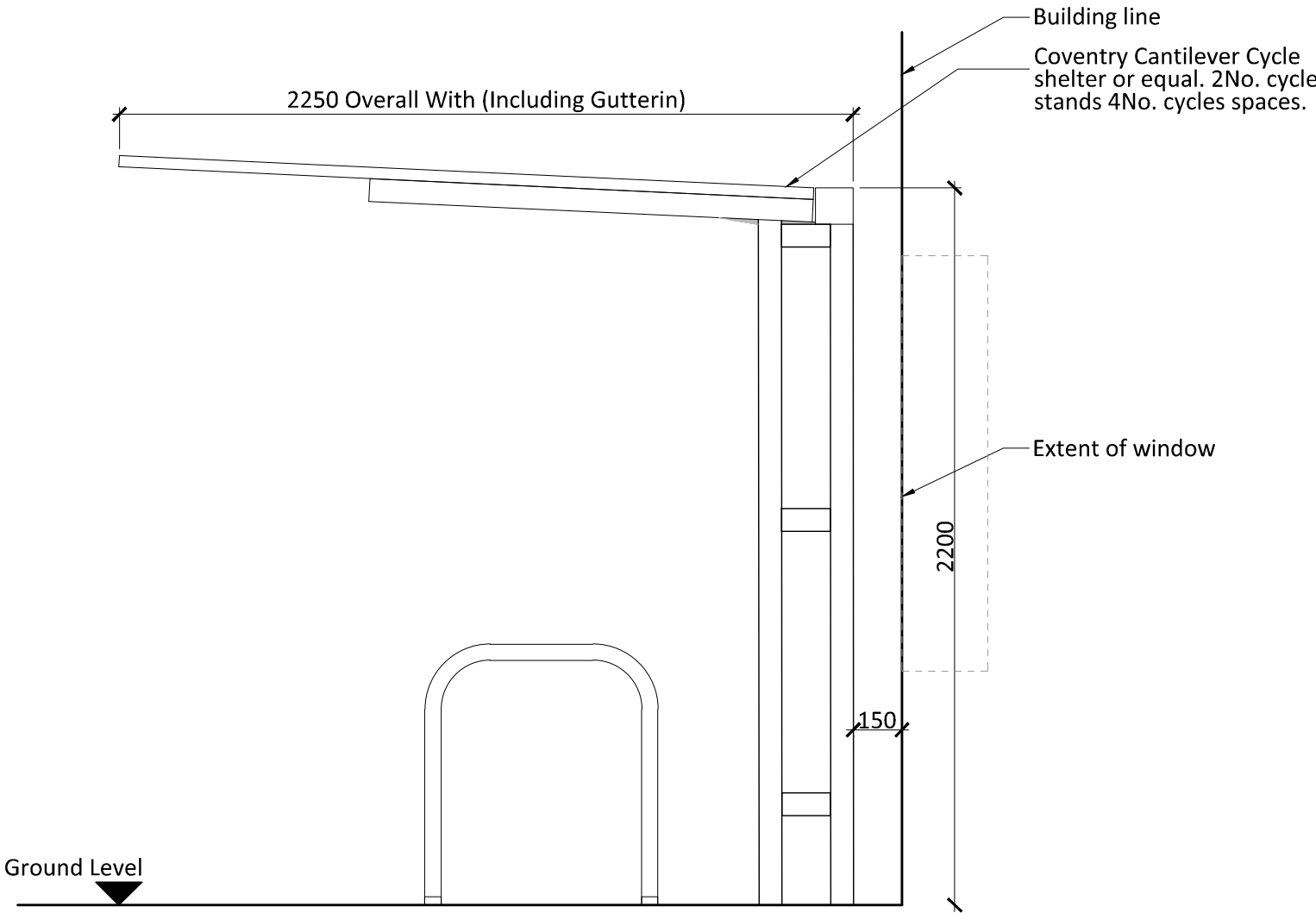


NOTE:
THIS DRAWING HAS BEEN PRODUCED BY ELECTRONIC MEANS. SHOULD THE SCALE MEASUREMENTS BE TAKEN BY MEANS OTHER THAN ELECTRONIC (e.g. FROM A PRINTED COPY), THE FOLLOWING MUST BE TAKEN INTO CONSIDERATION BEFORE SCALING IS UNDERTAKEN:
1. ENSURE THAT THE COPY HAS BEEN PRINTED/PLOTTED ON THE STATED SHEET SIZE WITH THE PLOTTING SCALE SET TO A CORRECT RATIO.
2. ENSURE THAT AN ADEQUATE ALLOWANCE (DEPENDANT ON THE STATED SCALE) IS MADE FOR THE INEVITABLE DISTORTIONS INTRODUCED BY PLOTTING/PRINTING AND COPYING PROCESSES.
3. MARKED CRITICAL DIMENSIONS ARE TO BE REGARDED AS HAVING PRECEDENCE OVER THE SCALED VALUES.

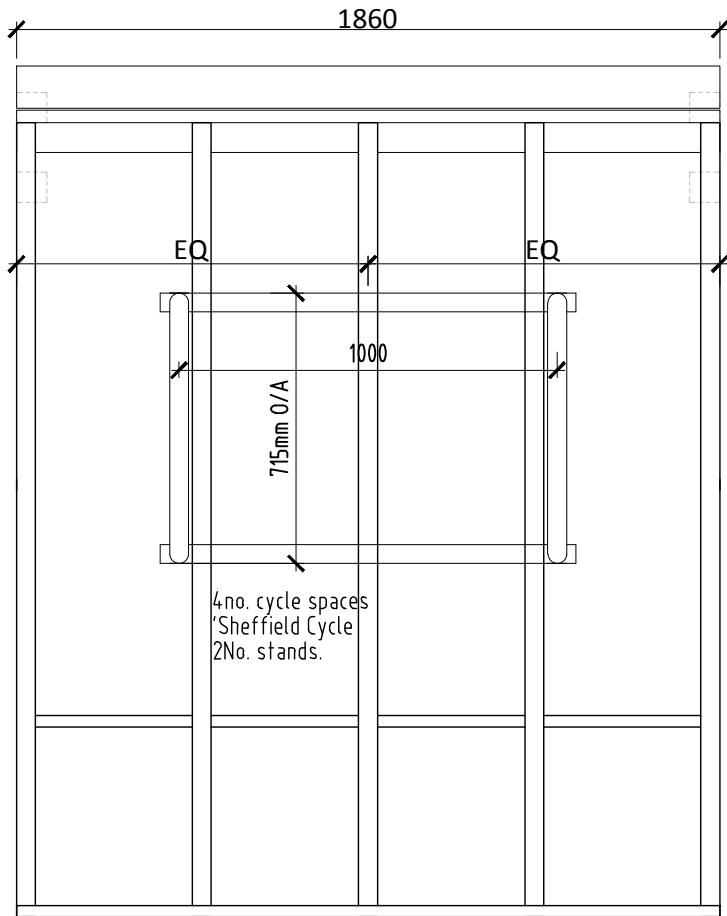


Front Elevation
Scale 1:20



Side Elevation
Scale 1:20

- Notes:
- For location refer to Site Plan drawing No. A(0)101.
 - Coventry Cantilever Cycle shelter to equal.



4no. Sheffield Cycle Spaces by Broxap
Scale 1:20

2	DRAWING UPDATED AS FOLLOWS: Cycle store changed	01.02.17	MA	PC
1	DRAWING UPDATED AS FOLLOWS: Status updated to planning	09.01.17	MA	PC
REV	DESCRIPTION	DATE	INIT	CHKD



Client
Rydon
Project
Ashton Court, Camden Park Road, Camden
Title
Typical External Cycle Store

Scale
1:20@A1

Date
08.11.16

Drawn By
MA

Checked By
CA

Project No:
K16/0423

Drawing No:
A (0)105

Revision
2

St Johns House 1A Knoll Rise Orpington Kent BR6 0JX
01689 888222 orpington@calfordseaden.co.uk
calfordseaden LLP is a Limited Liability Partnership Registered in England & Wales number OC315838
ORPINGTON | LONDON | BIRMINGHAM | SOUTHEND-ON-SEA | WINCHESTER

calfordseaden.co.uk

PLANNING