

CDM:

Notes:

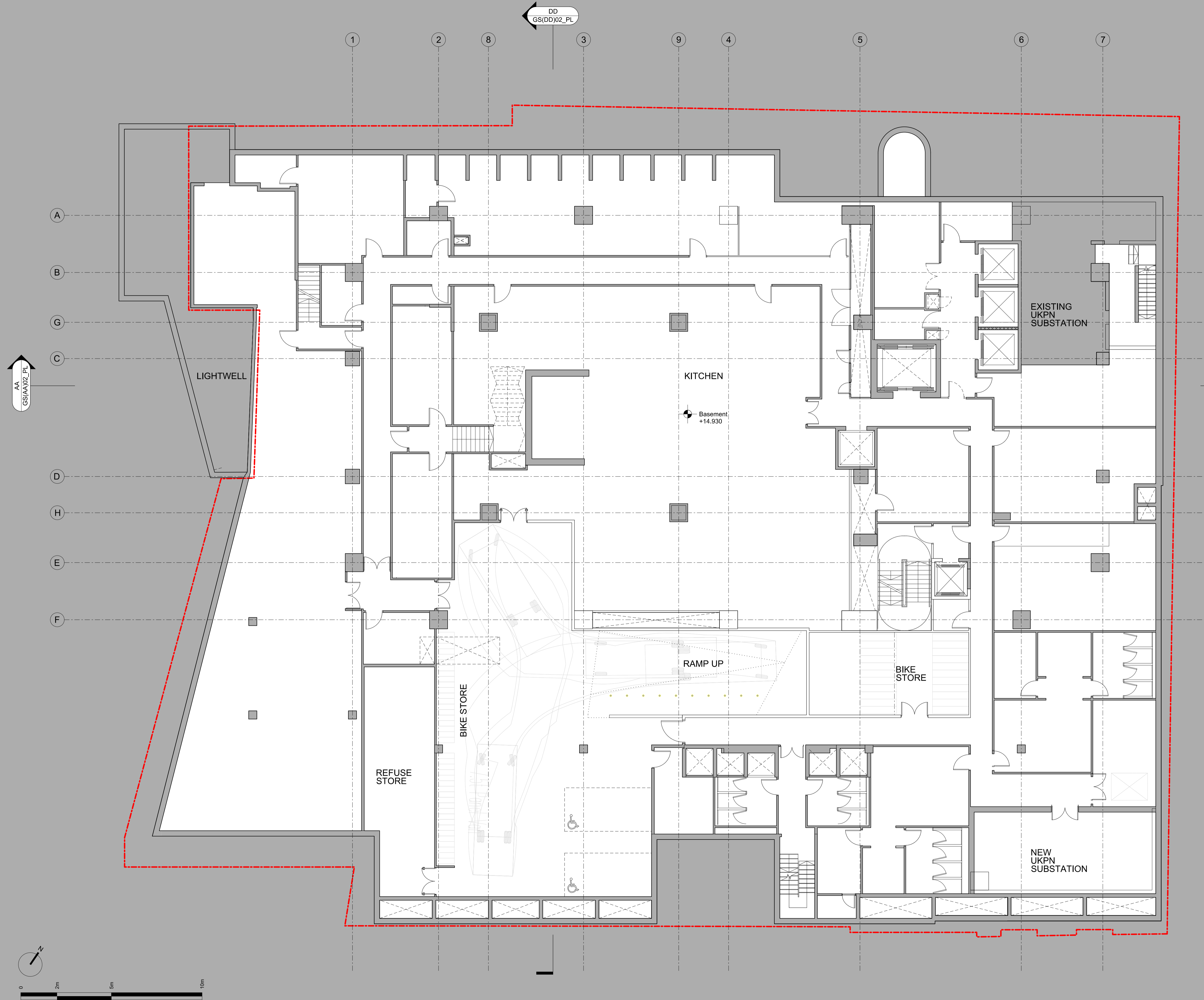
Revision history:

P01	22/01/16	Issued for Planning
Project: Camden Town Hall		
Drawing title: Proposed Sub-Basement Plan Minor Material Amendment Application		
1996_X_GA(B2)02_PL		Rev. P01
Scale: 1:100@A1		

1 Oliver's Yard
55-71 City Road
London EC1Y 1HQ

0207 833 8533
orms@orms.co.uk
orms.co.uk

Do not scale. All dimensions to be confirmed on site.
Information contained in this drawing is the sole
copyright of Orms designers + architects ltd and is
not to be reproduced without permission.



CDM:

Notes:

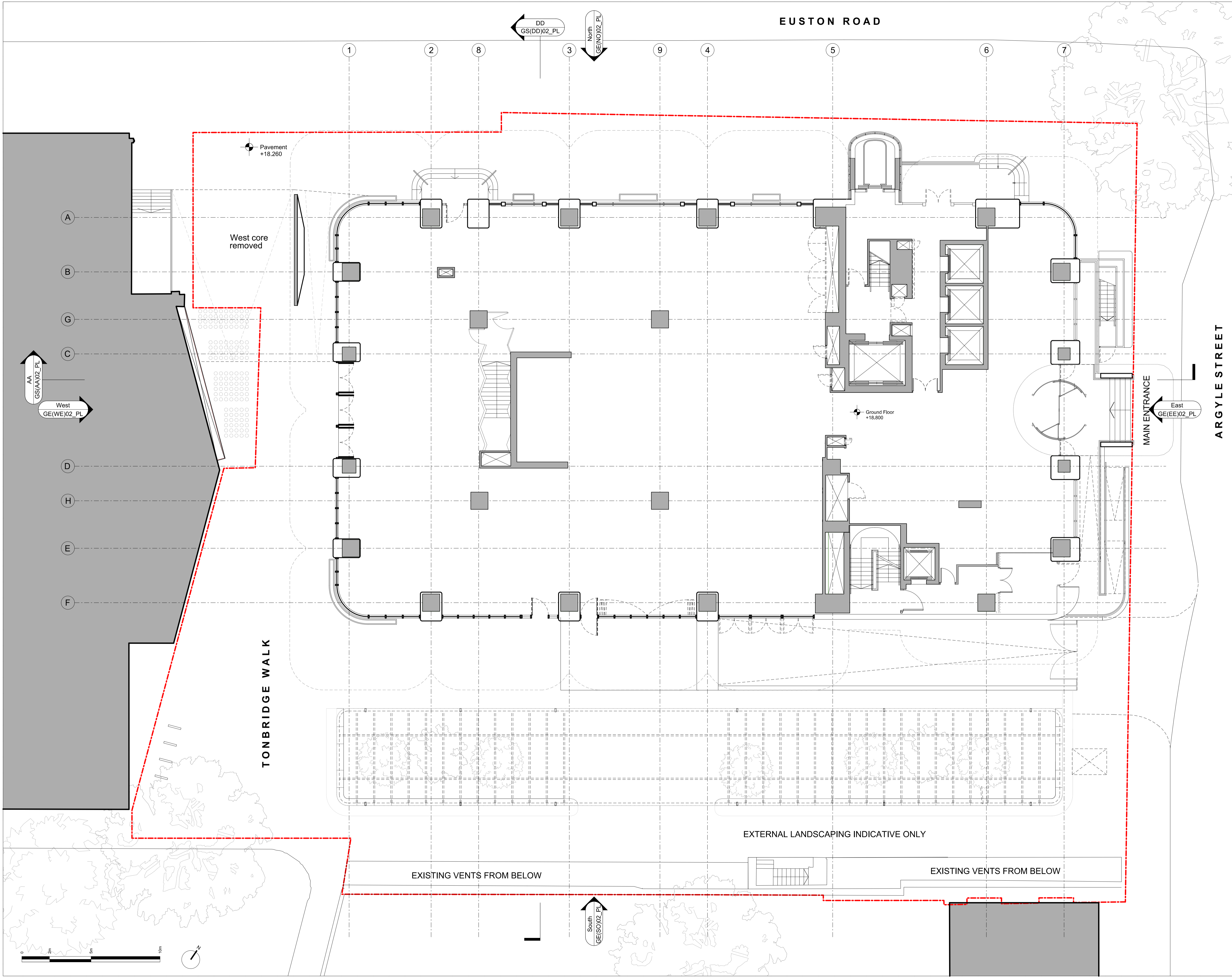
Revision history:

P01	22/01/16	Issued for Planning
Project:	Camden Town Hall	
Drawing title:	Proposed Basement Plan Minor Material Amendment Application	
1996_X_GA(B1)02_PL	Rev.	P01
Scale:	1:100@A1	

1 Oliver's Yard
55-71 City Road
London EC1Y 1HQ

0207 833 8533
orms@orms.co.uk
orms.co.uk

Do not scale. All dimensions to be confirmed on site.
Information contained in this drawing is the sole
copyright of Orms designers + architects ltd and is
not to be reproduced without permission.



CDM:

Notes:

Key

Revision history:

P01	22/01/16	Issued for Planning
-----	----------	---------------------

Project: Camden Town Hall

Drawing title: Proposed Ground Floor Plan
Minor Material Amendment Application

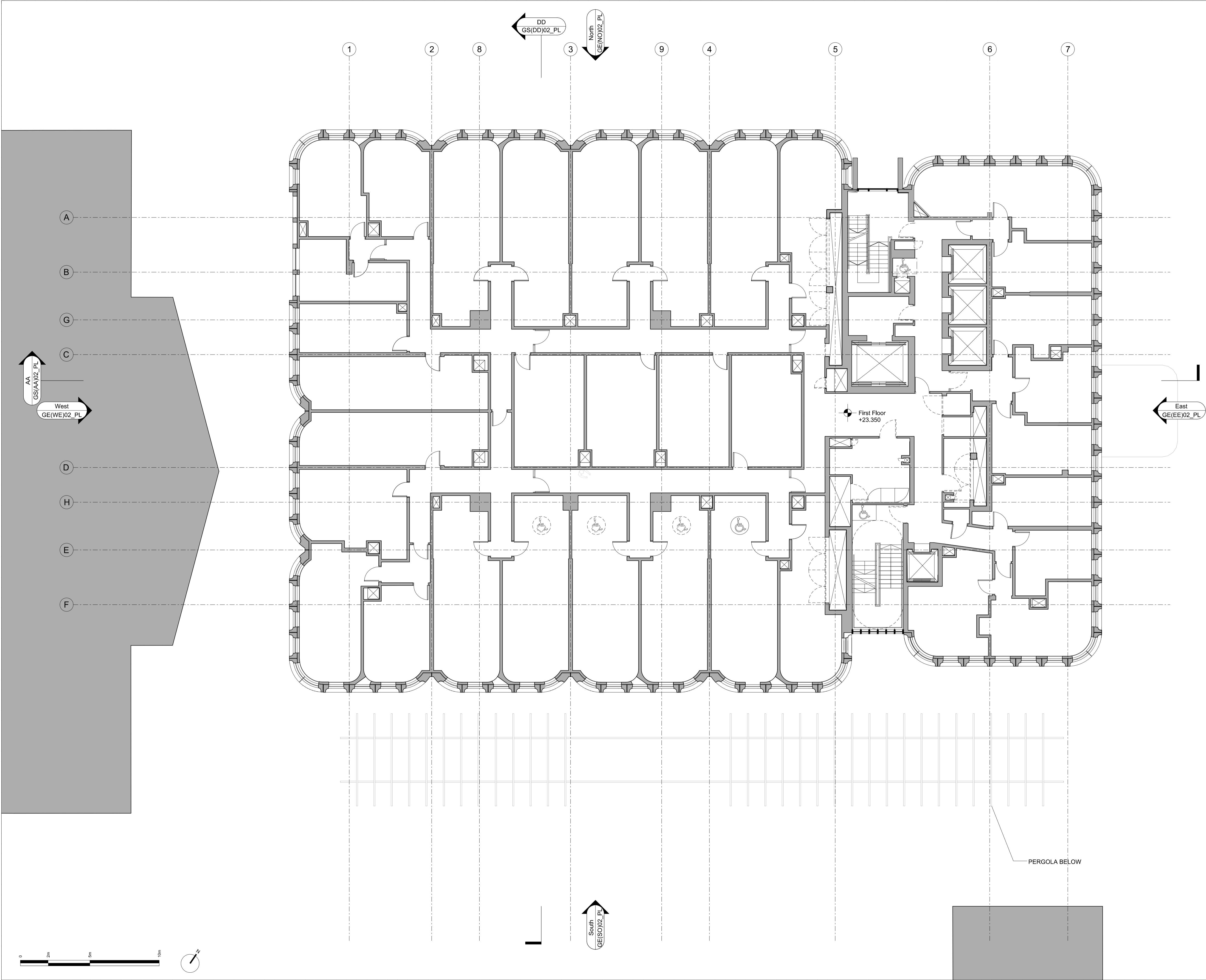
1996_X_GA(00)02_PL	Rev. P01
--------------------	----------

Scale: 1:100@A1

1 Oliver's Yard
55-71 City Road
London EC1Y 1HQ




0207 833 8533
orms@orms.co.uk
orms.co.uk

Do not scale. All dimensions to be confirmed on site.
Information contained in this drawing is the sole
copyright of Orms designers + architects ltd and is
not to be reproduced without permission.



CDM:

Notes:

-  Fully Accessible Rooms
-  Adaptable Rooms
-  Disabled Refuge

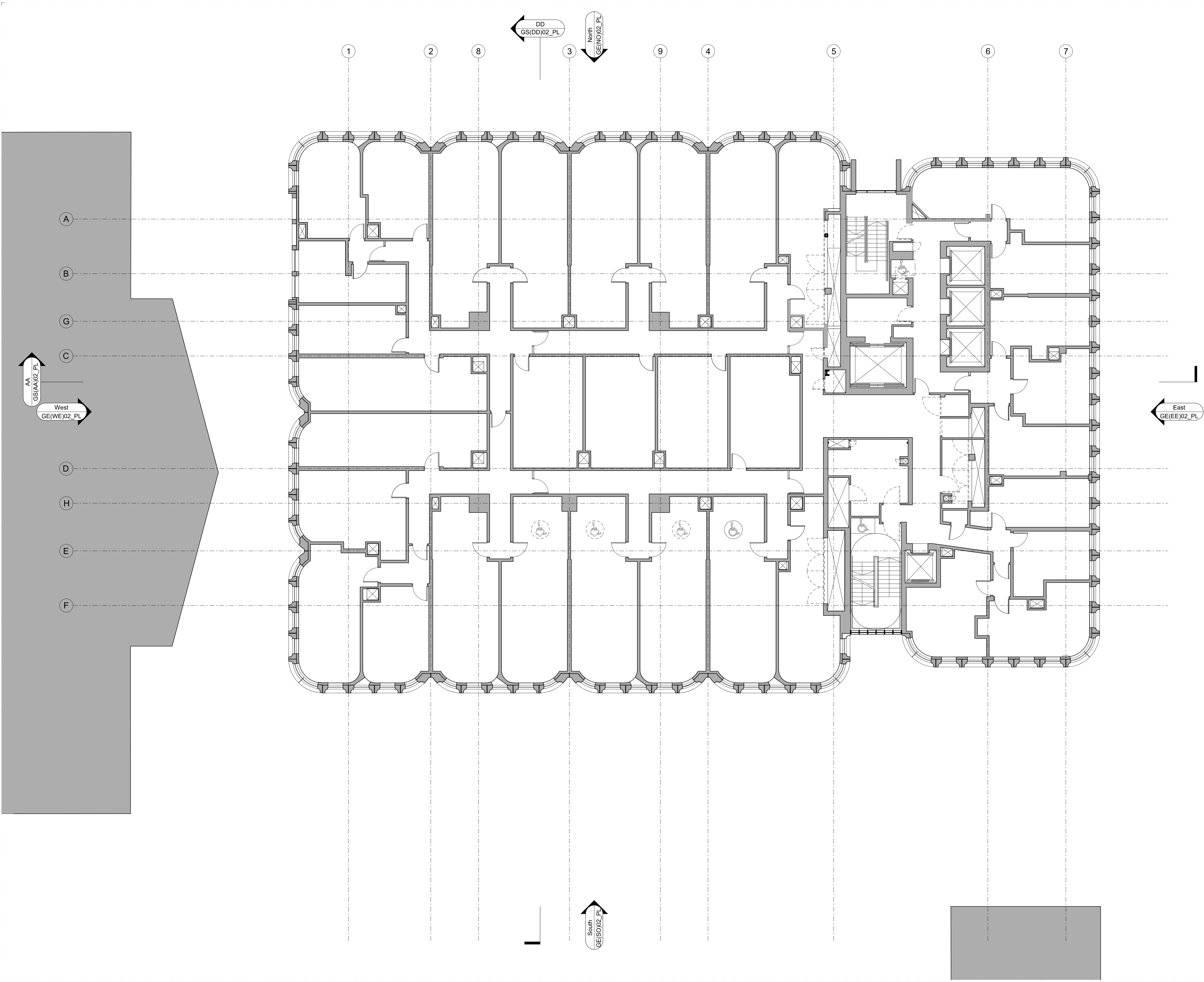
Revision history:

P01	22/01/16	Issued for Planning
Project:	Camden Town Hall	
Drawing title:	Proposed First Floor Plan Minor Material Amendment Application	
1996_X_GA(01)02_PL	Rev.	P01
Scale:	1:100@A1	

1 Oliver's Yard
55-71 City Road
London EC1Y 1HQ

0207 833 8533
orms@orms.co.uk
orms.co.uk

Do not scale. All dimensions to be confirmed on site.
Information contained in this drawing is the sole
copyright of Orms designers + architects ltd and is
not to be reproduced without permission.



CDM:

Notes:

- Fully Accessible Rooms
- Adaptable Rooms
- Disabled Refuge

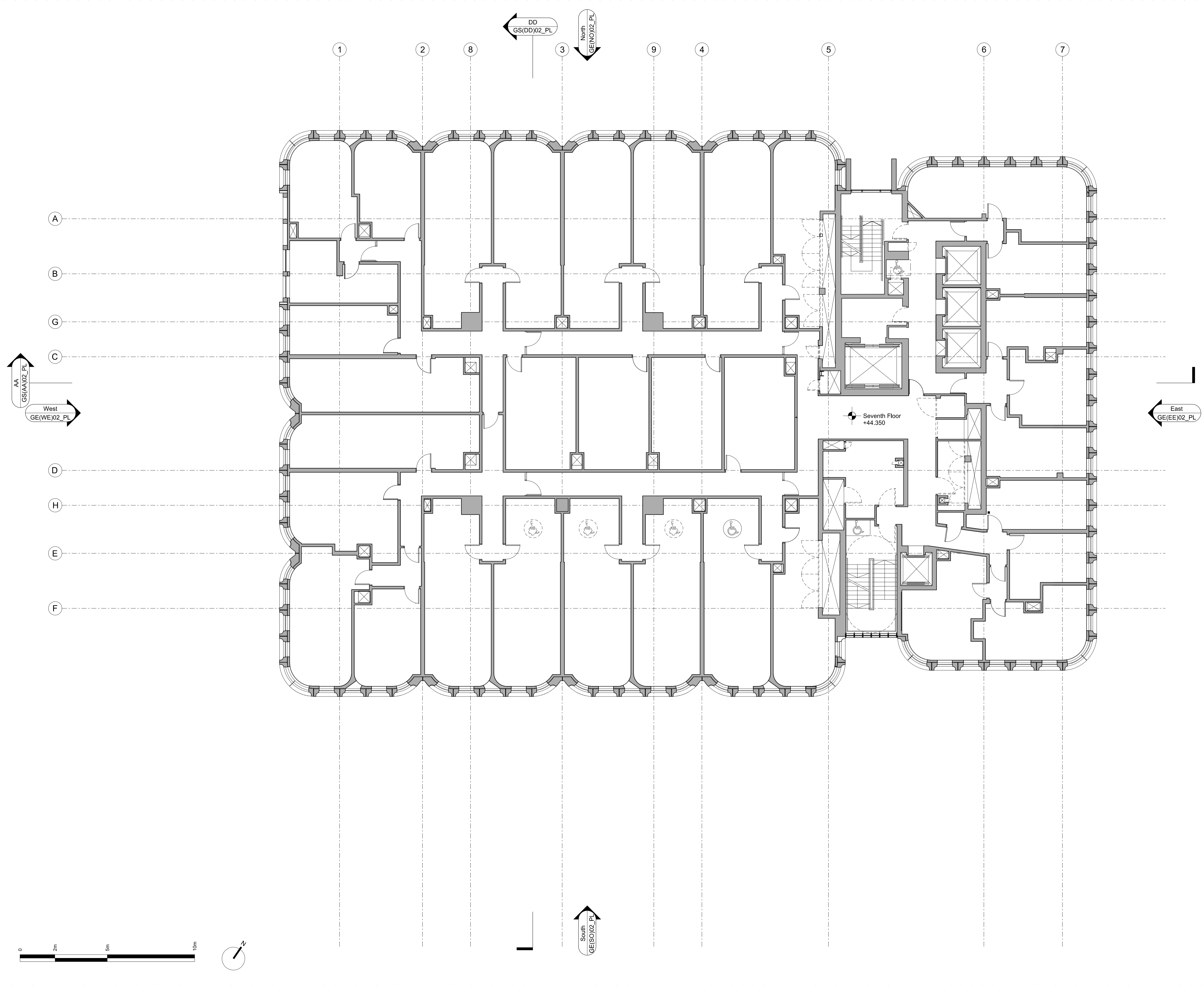
Revision history:

P01	22/01/16	Issued for Planning
Project:	Camden Town Hall	
Drawing title:	Proposed Typical Floor Plan Levels 2-6 Minor Material Amendment Application	
1996_X_GA(TY)02_PL	Rev.	P01
Scale:	1:100@A1	

1 Oliver's Yard
55-71 City Road
London EC1Y 1HQ

0207 833 8533
orms@orms.co.uk
orms.co.uk

Do not scale. All dimensions to be confirmed on site.
Information contained in this drawing is the sole
copyright of Orms designers + architects ltd and is
not to be reproduced without permission.



CDM:

Notes:

Fully Accessible Rooms

Adaptable Rooms

Disabled Refuge

Revision history:

P0122/01/16Issued for Planning

Project:Camden Town Hall

Drawing title: Proposed
Seventh Floor Plan
Minor Material Amendment Application

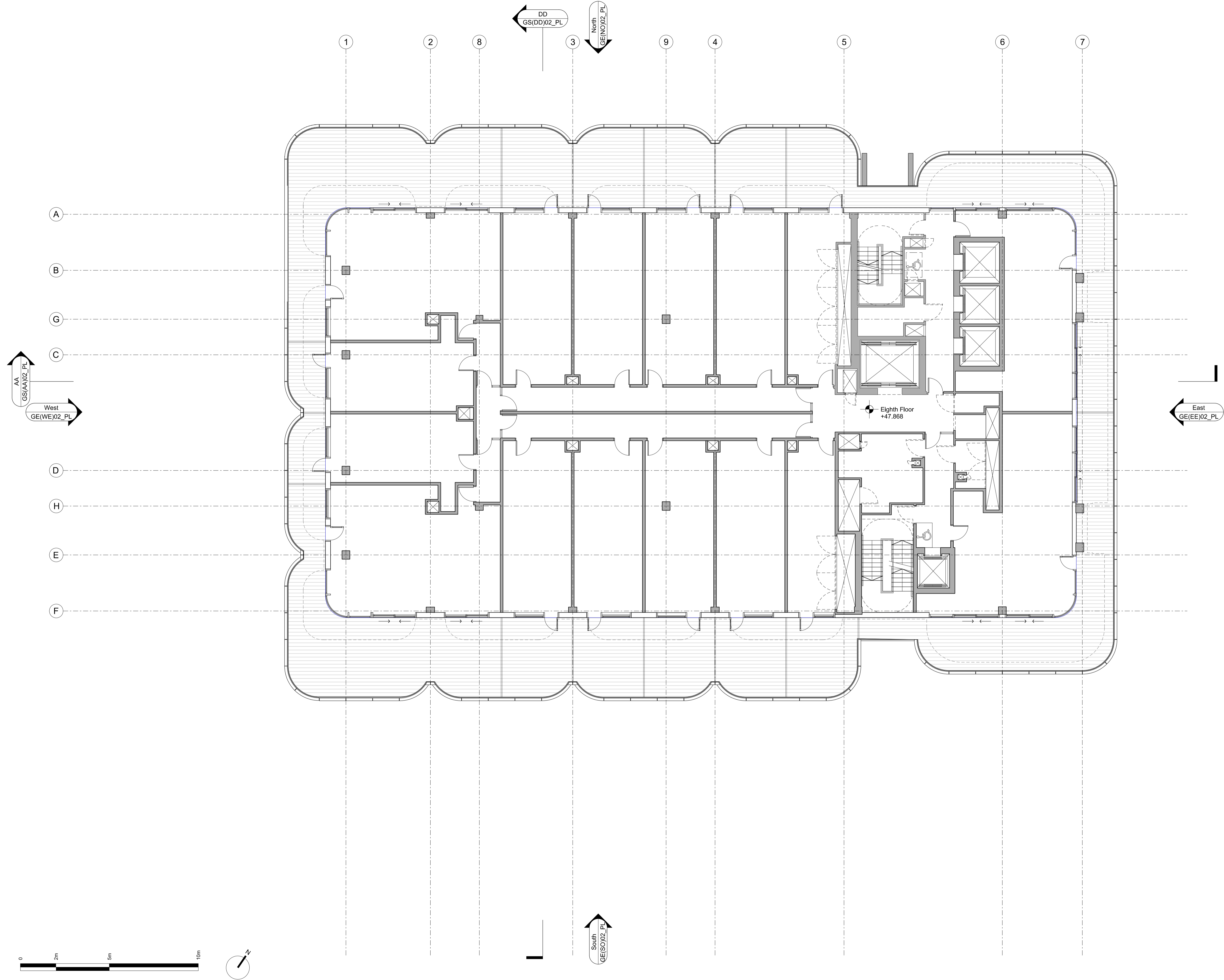
1996_X_GA(07)02_PLRev. P01

Scale: 1:100@A1

1 Oliver's Yard
55-71 City Road
London EC1Y 1HQ

0207 833 8533
orms@orms.co.uk
orms.co.uk

Do not scale. All dimensions to be confirmed on site.
Information contained in this drawing is the sole
copyright of Orms designers + architects ltd and is
not to be reproduced without permission.



CDM:

Notes:

 Disabled Refuge

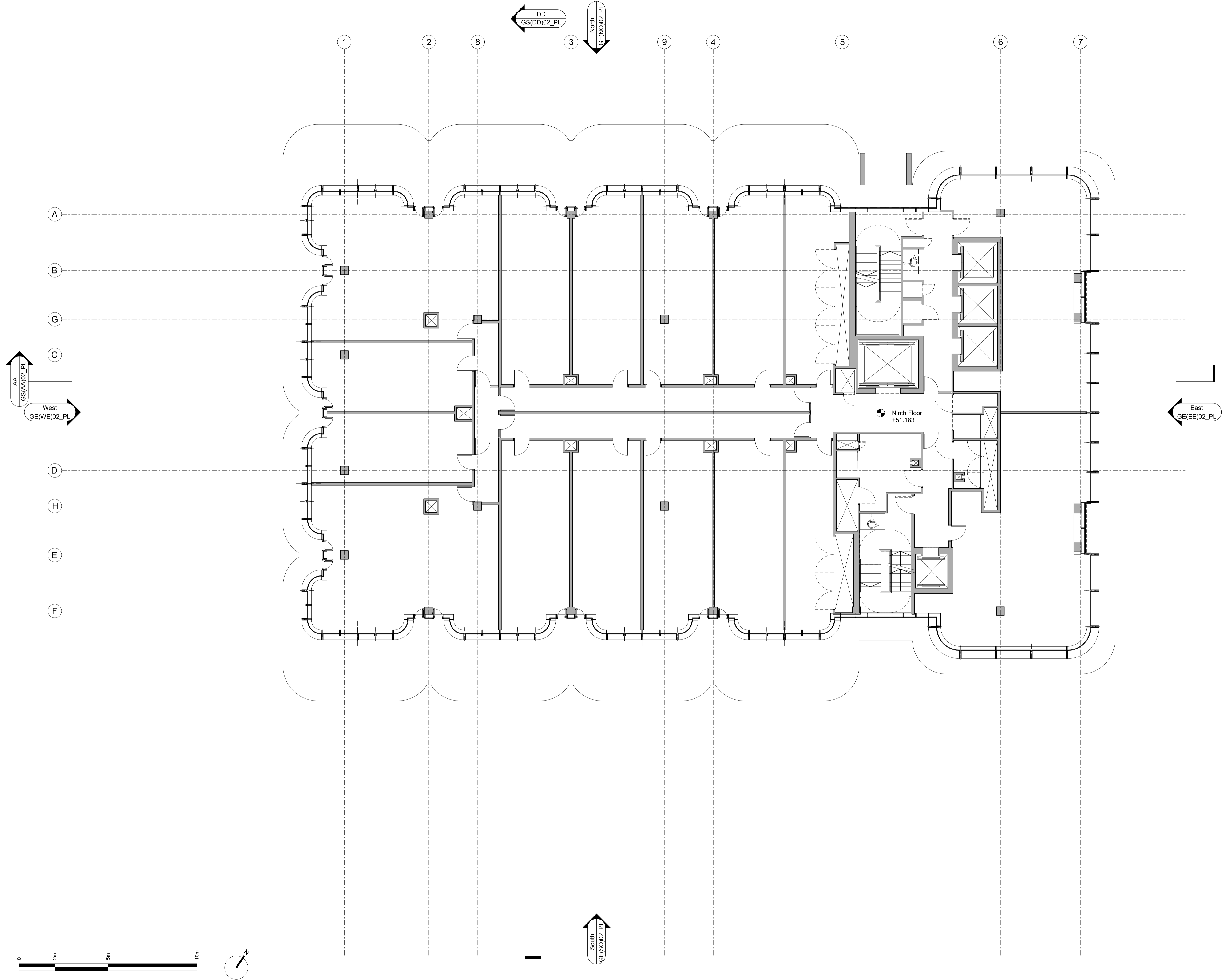
Revision history:

P01	22/01/16	Issued for Planning
Project:	Camden Town Hall	
Drawing title:	Proposed Eighth Floor Plan Minor Material Amendment Application	
1996_X_GA(08)02_PL	Rev.	P01
Scale:	1:100@A1	

1 Oliver's Yard
55-71 City Road
London EC1Y 1HQ

0207 833 8533
orms@orms.co.uk
orms.co.uk

Do not scale. All dimensions to be confirmed on site.
Information contained in this drawing is the sole
copyright of Orms designers + architects ltd and is
not to be reproduced without permission.



CDM:

Notes:

 Disabled Refuge

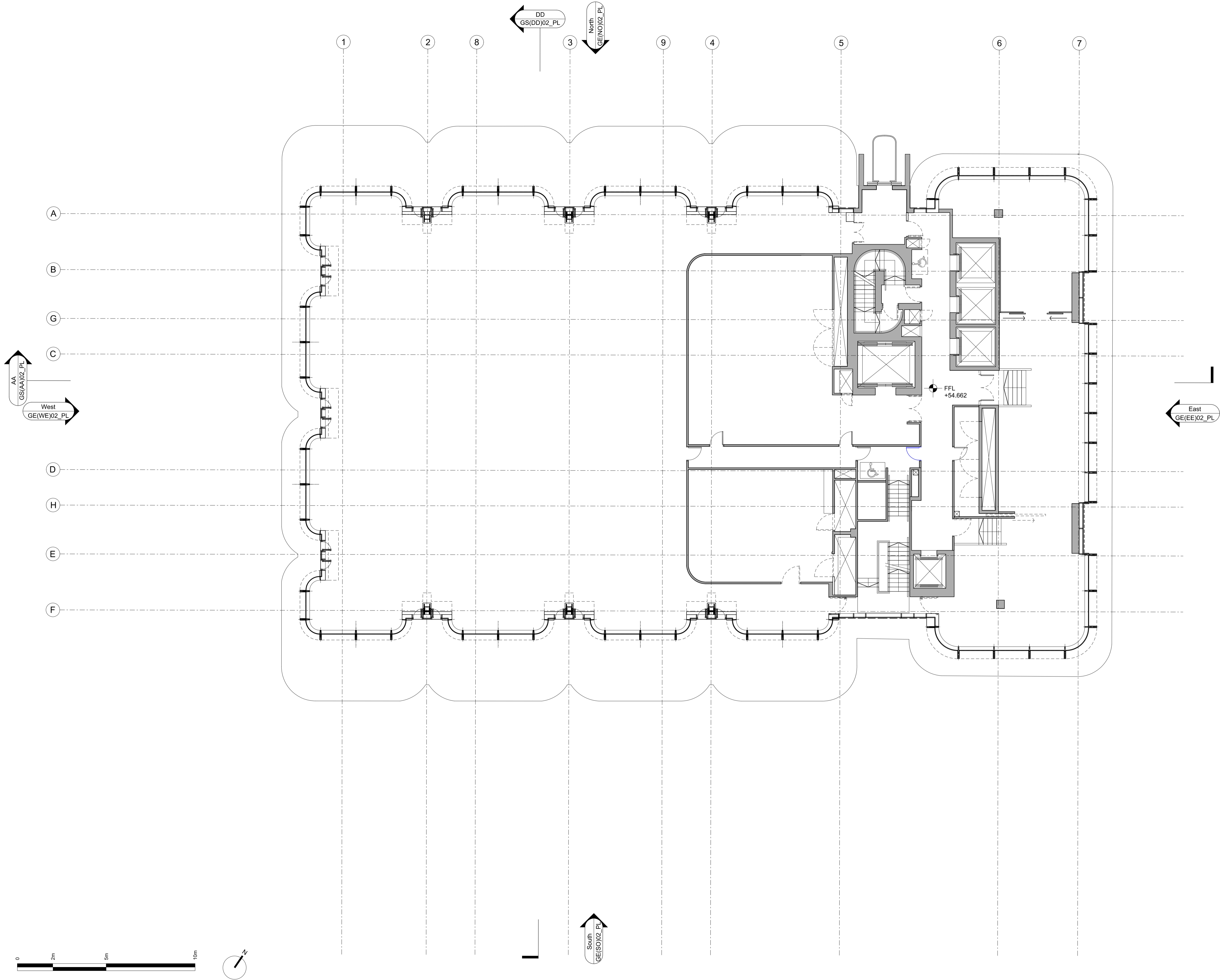
Revision history:

P01	22/01/16	Issued for Planning
Project: Camden Town Hall		
Drawing title: Proposed Ninth Floor Plan Minor Material Amendment Application		
1996_X_GA(09)02_PL		Rev. P01
Scale: 1:100@A1		

1 Oliver's Yard
55-71 City Road
London EC1Y 1HQ

0207 833 8533
orms@orms.co.uk
orms.co.uk

Do not scale. All dimensions to be confirmed on site.
Information contained in this drawing is the sole
copyright of Orms designers + architects ltd and is
not to be reproduced without permission.



CDM:

Notes:

 Disabled Refuge

Revision history:

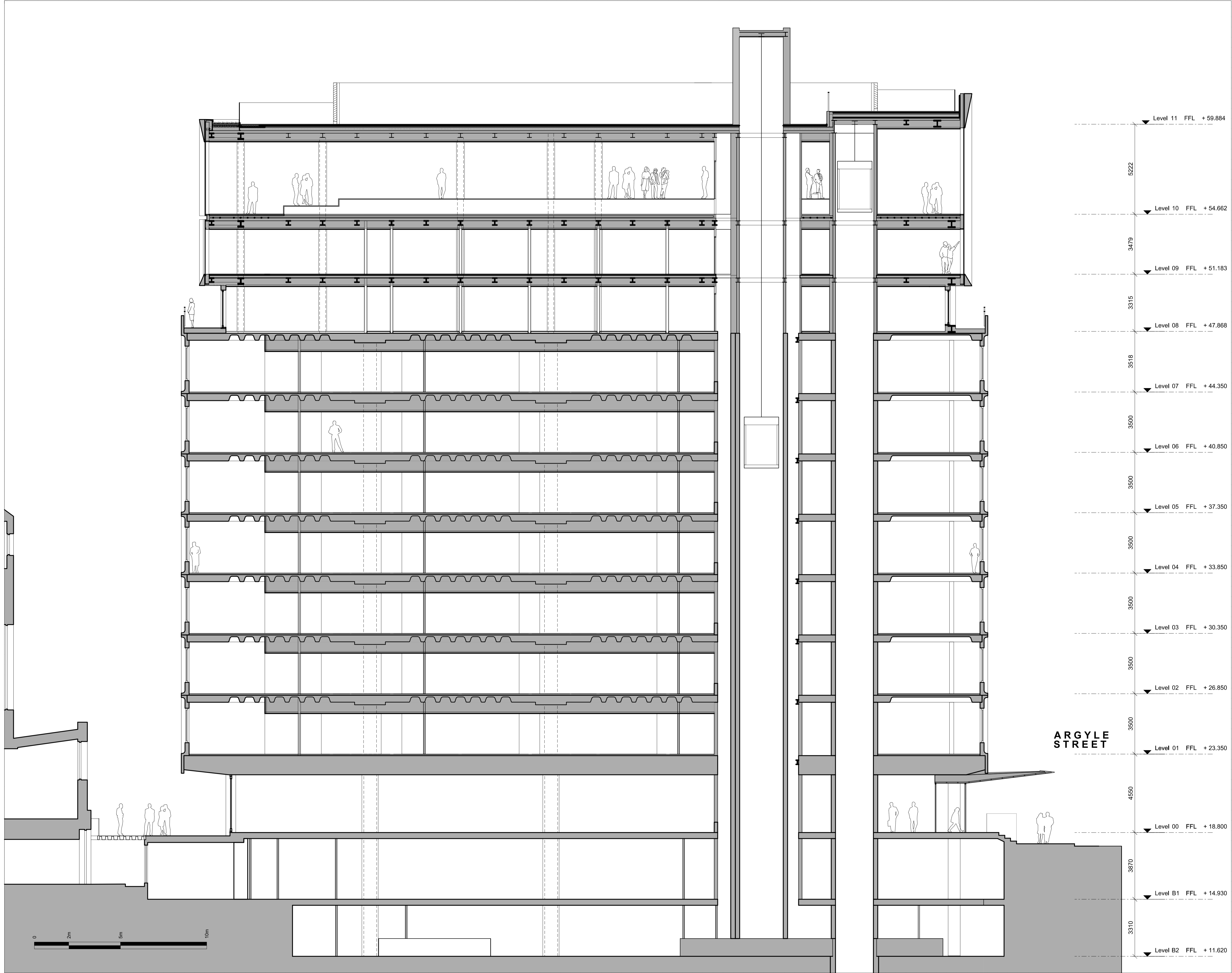
P01	22/01/16	Issued for Planning
Project: Camden Town Hall		
Drawing title: Proposed Tenth Floor Plan Minor Material Amendment Application		
1996_X_GA(10)02_PL		Rev. P01
Scale: 1:100@A1		

1 Oliver's Yard
55-71 City Road
London EC1Y 1HQ

0207 833 8533
orms@orms.co.uk
orms.co.uk

Do not scale. All dimensions to be confirmed on site.
Information contained in this drawing is the sole
copyright of Orms designers + architects ltd and is
not to be reproduced without permission.





CDM:

Notes:

Existing building shown hatched for solid walls.

Revision history:

P01 22/01/16 Issued for Planning

Project: Camden Town Hall

Drawing title: Proposed Section AA Minor Material Amendment Application

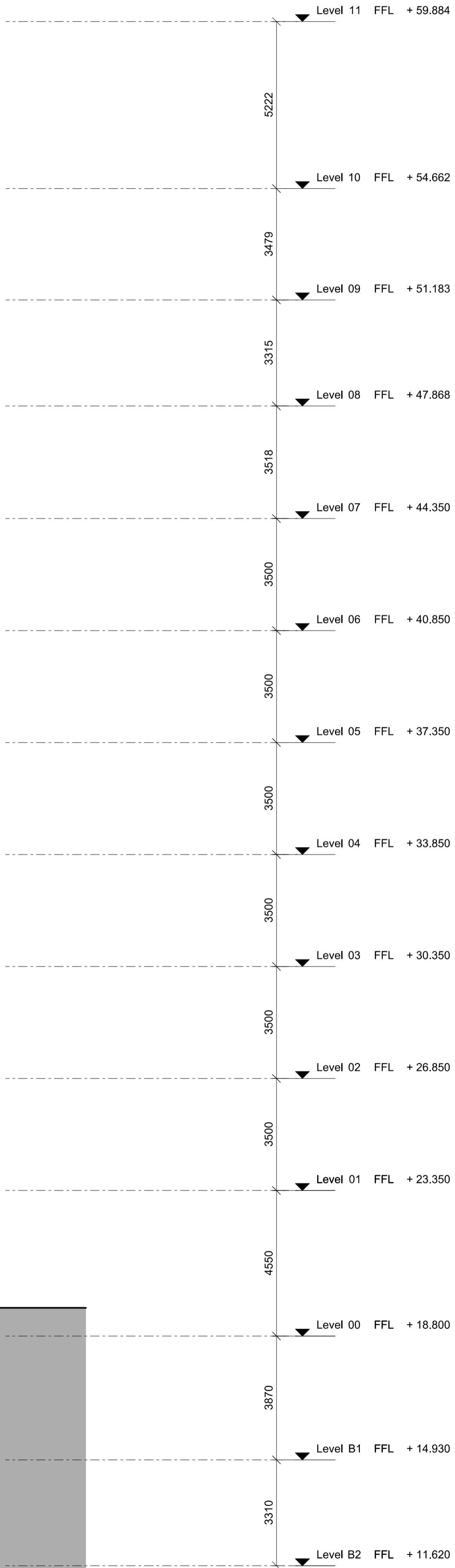
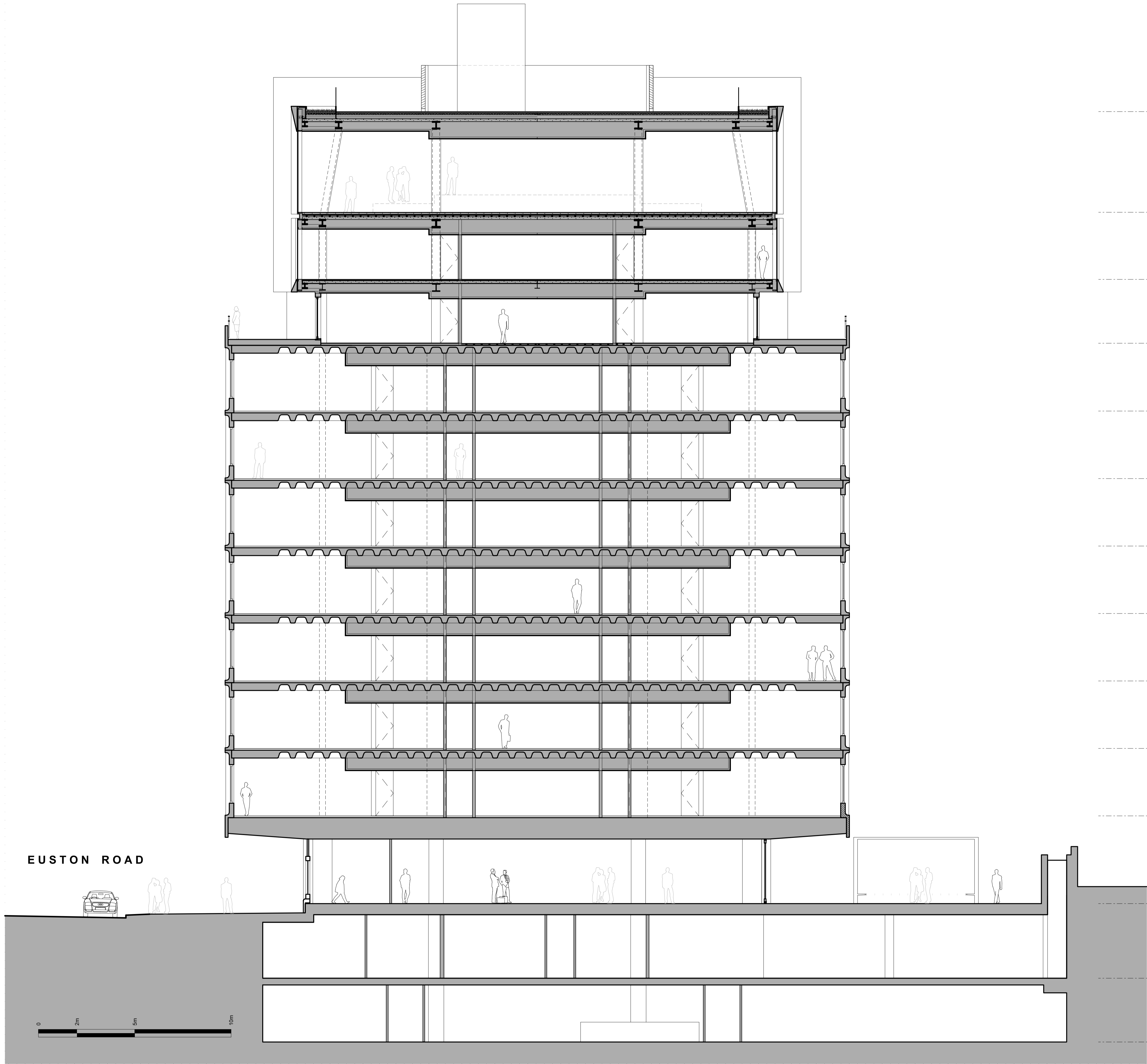
1996_X_GS(AA)02_PL Rev. P01

Scale: 1:100@A1

1 Oliver's Yard
55-71 City Road
London EC1Y 1HQ

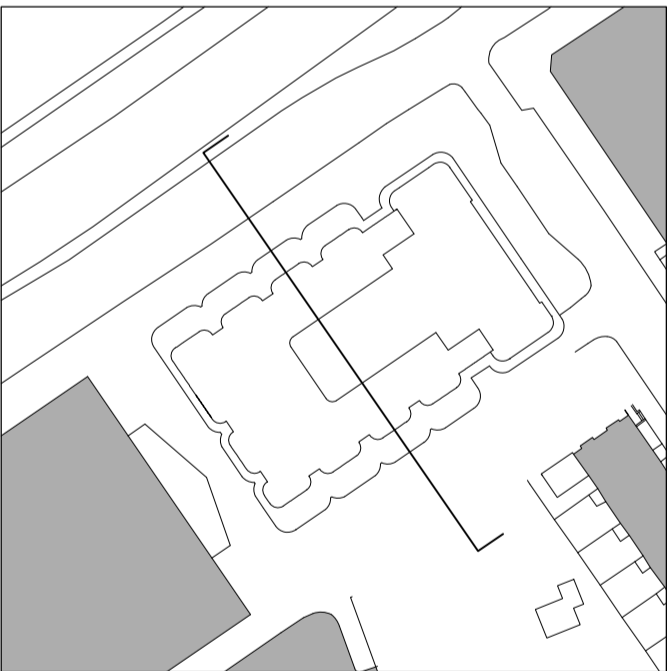
0207 833 8533
orms@orms.co.uk
orms.co.uk

Do not scale. All dimensions to be confirmed on site. Information contained in this drawing is the sole copyright of Orms designers + architects ltd and is not to be reproduced without permission.



CDM:

Notes:



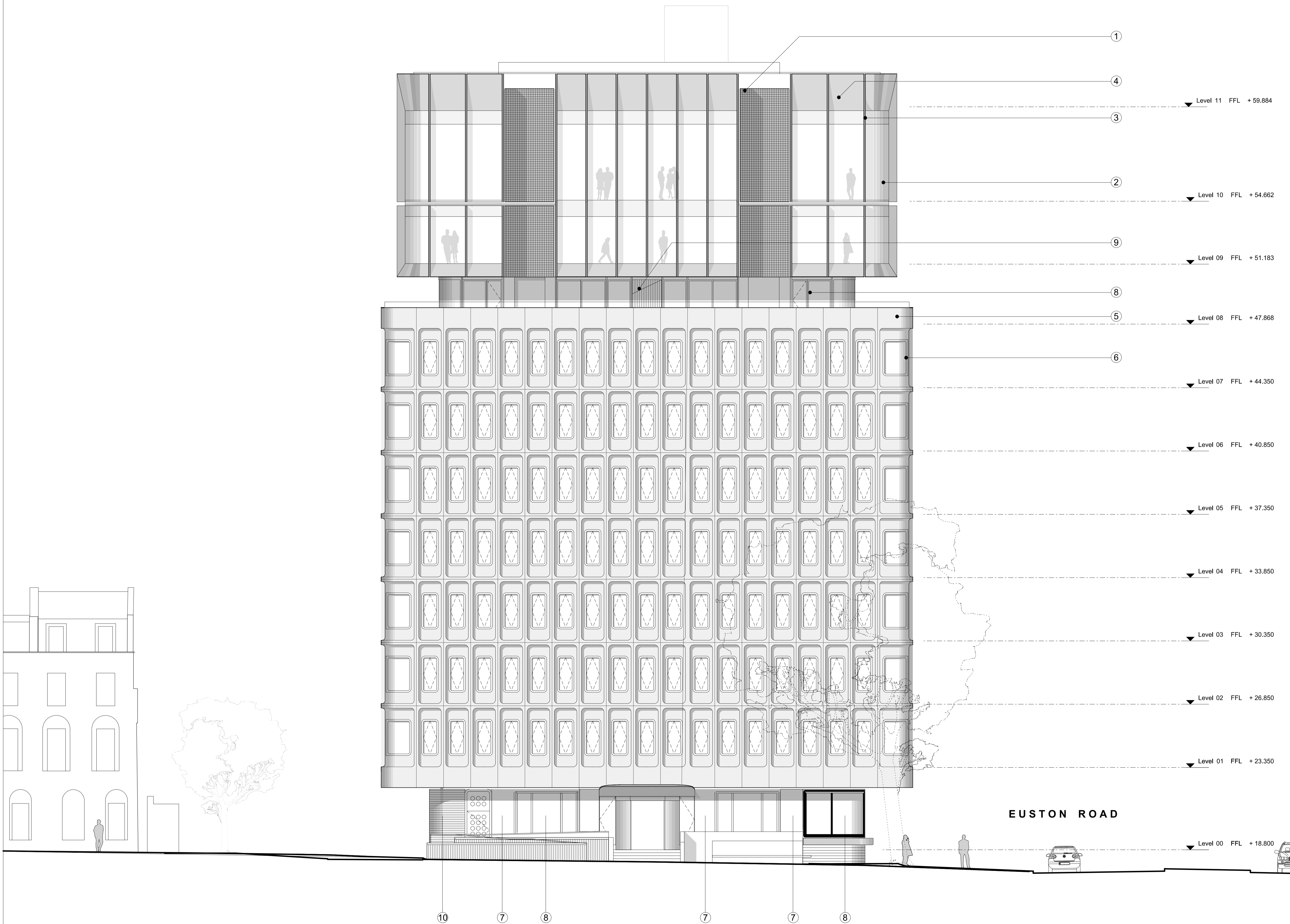
Revision history:

P01	22/01/16	Issued for Planning
Project:	Camden Town Hall	
Drawing title:	Proposed Section DD Minor Material Amendment Application	
1996_X_GS(DD)02_PL	Rev.	P01
Scale: 1:100@A1		

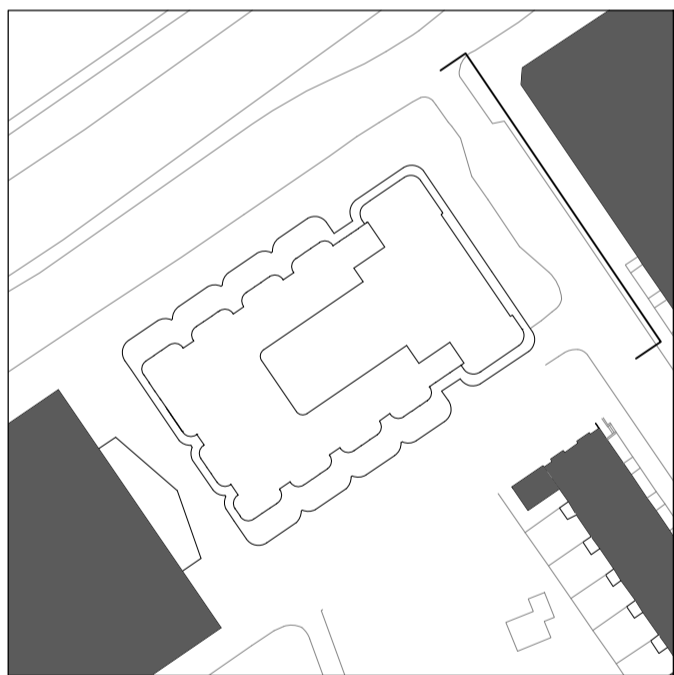
1 Oliver's Yard
55-71 City Road
London EC1Y 1HQ

0207 833 8533
orms@orms.co.uk
orms.co.uk

Do not scale. All dimensions to be confirmed on site. Information contained in this drawing is the sole copyright of Orms designers + architects ltd and is not to be reproduced without permission.



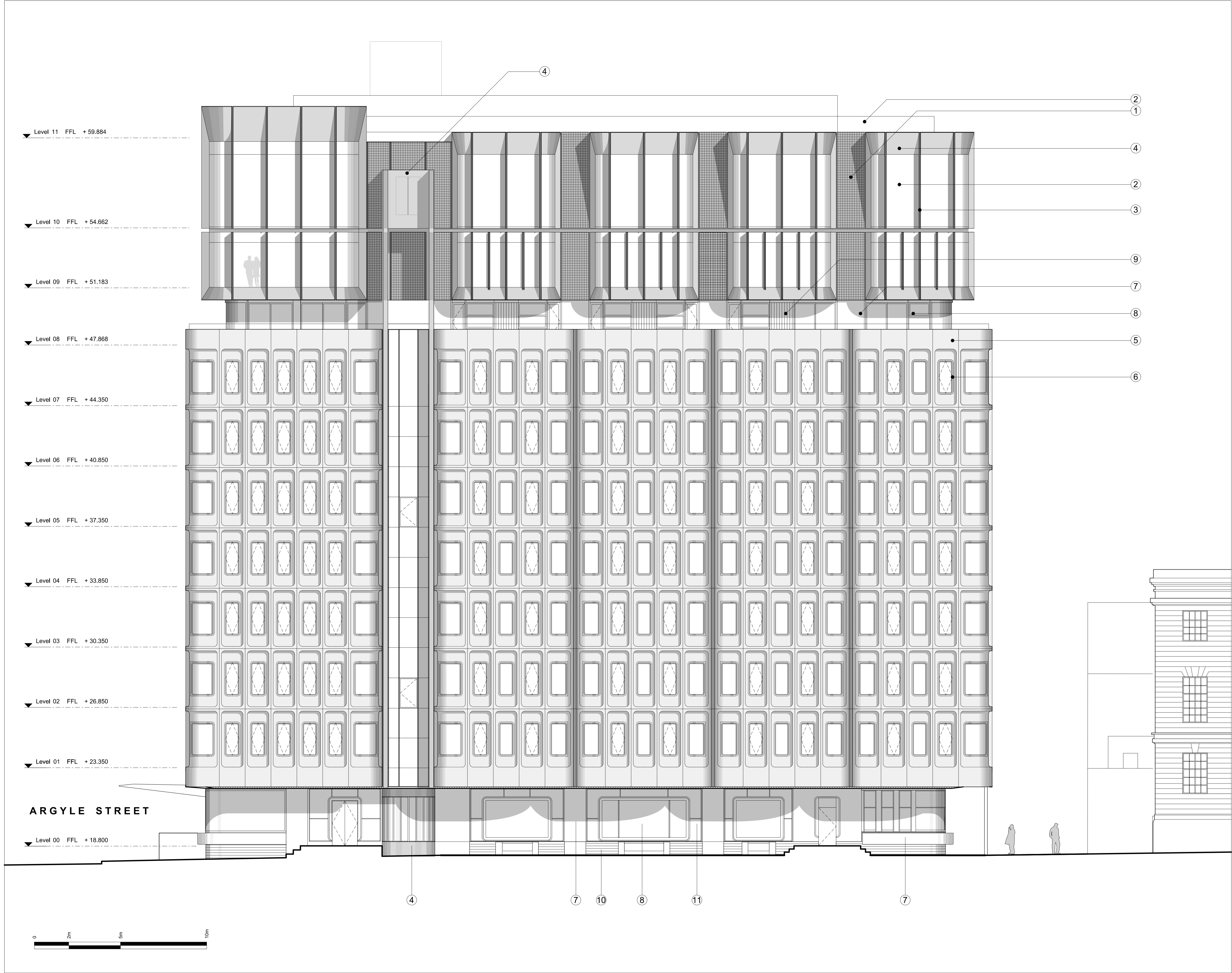
- CDM:
- Notes:
- ① Metal Mesh
 - ② Glass
 - ③ Metal Fin
 - ④ Metal Panel
 - ⑤ Existing Pre-Cast Concrete
 - ⑥ Metal Framed Windows
 - ⑦ New Pre-Cast Concrete
 - ⑧ Timber windows
 - ⑨ Timber Paneling
 - ⑩ Brick
 - ⑪ Glass Brick



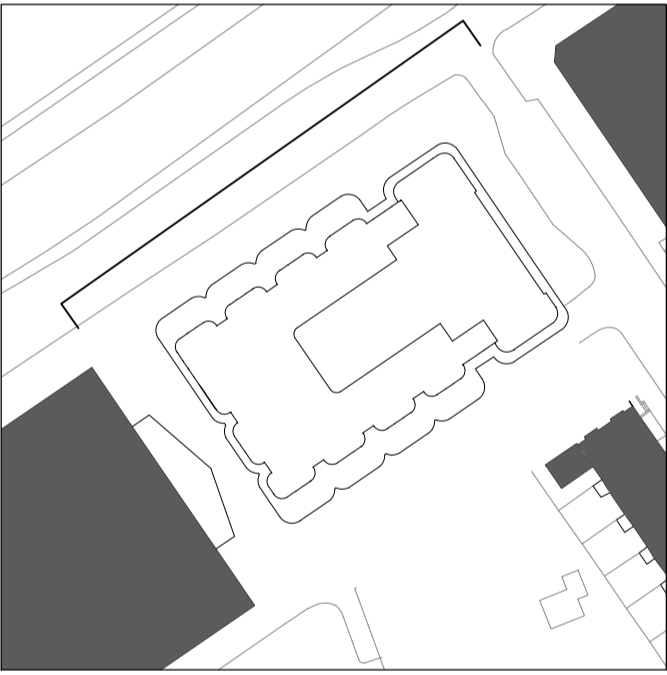
Revision history:

P01 22/01/16 Issued for Planning
Project: Camden Town Hall
Drawing title: Proposed
East Elevation
Minor Material Amendment Application
1996_X_GE(EA)02_PL [P01]
Scale: 1:100@A1

Orms
1 Oliver's Yard
55-71 City Road
London EC1Y 1HQ
0207 833 8533
orms@orms.co.uk
orms.co.uk
Do not scale. All dimensions to be confirmed on site.
Information contained in this drawing is the sole
copyright of Orms designers + architects ltd and is
not to be reproduced without permission.



- CDM:
- Notes:
- 1 Metal Mesh
 - 2 Glass
 - 3 Metal Fin
 - 4 Metal Panel
 - 5 Existing Pre-Cast Concrete
 - 6 Metal Framed Windows
 - 7 New Pre-Cast Concrete
 - 8 Timber windows
 - 9 Timber Paneling
 - 10 Brick
 - 11 Glass Brick



Revision history:

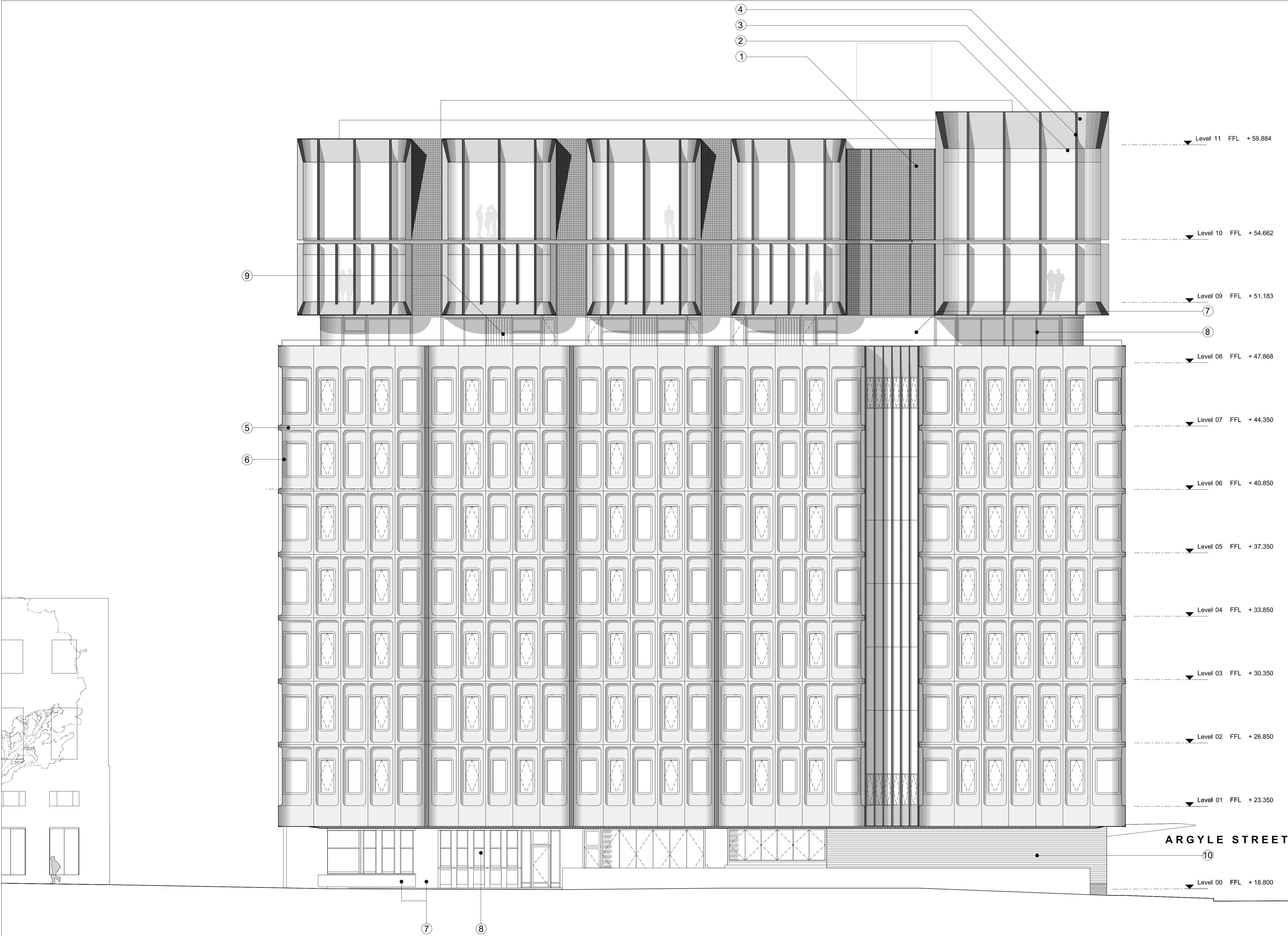
P01 22/01/16 Issued for Planning
Project: Camden Town Hall
Drawing title: Proposed North Elevation
Minor Material Amendment Application

1996_X_GE(NO)02_PL [P01]

Scale: 1:100@A1

Orms
1 Oliver's Yard
55-71 City Road
London EC1Y 1HQ
0207 833 8533
orms@orms.co.uk
orms.co.uk

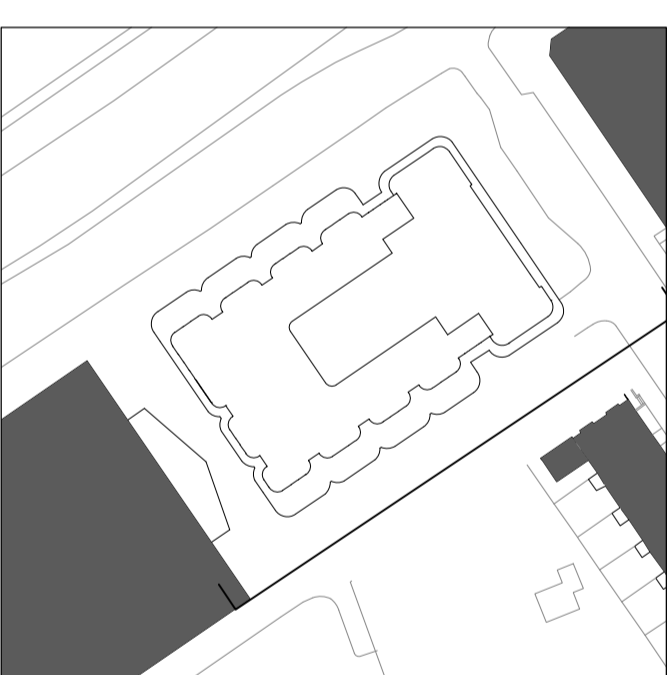
Do not scale. All dimensions to be confirmed on site.
Information contained in this drawing is the sole
copyright of Orms designers + architects ltd and is
not to be reproduced without permission.



CDM:

Notes:

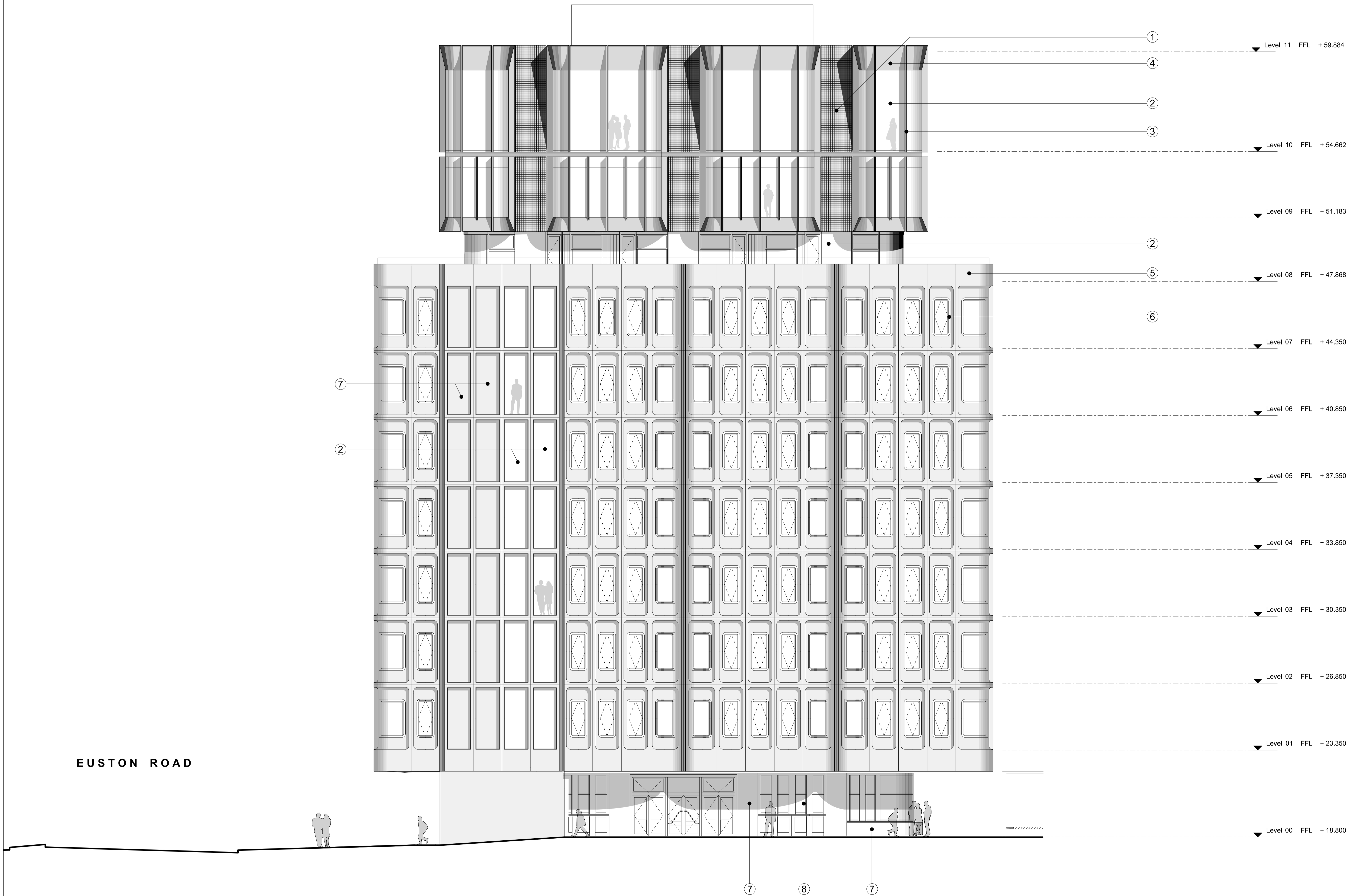
- ① Metal Mesh
- ② Glass
- ③ Metal Fin
- ④ Metal Panel
- ⑤ Existing Pre-Cast Concrete
- ⑥ Metal Framed Windows
- ⑦ New Pre-Cast Concrete
- ⑧ Timber windows
- ⑨ Timber Paneling
- ⑩ Brick
- ⑪ Glass Brick



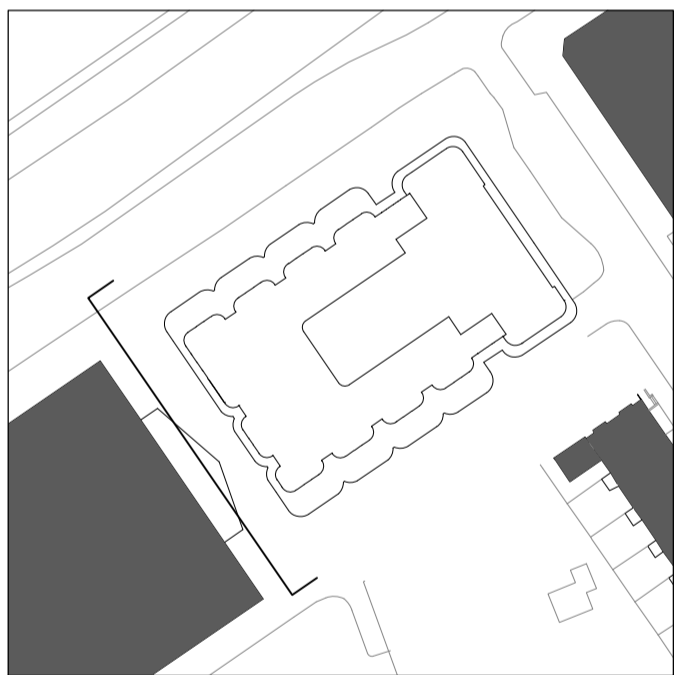
Revision history:

P01 22/01/16 Issued for Planning
Project: Camden Town Hall
Drawing title: Proposed South Elevation
Minor Material Amendment Application
1996_X_GE(SO)02_PL [P01]
Scale: 1:100@A1

Orms
1 Oliver's Yard
55-71 City Road
London EC1Y 1HQ
0207 833 8533
orms@orms.co.uk
orms.co.uk
Do not scale. All dimensions to be confirmed on site.
Information contained in this drawing is the sole
copyright of Orms designers + architects ltd and is
not to be reproduced without permission.



- CDM:
- Notes:
- ① Metal Mesh
 - ② Glass
 - ③ Metal Fin
 - ④ Metal Panel
 - ⑤ Existing Pre-Cast Concrete
 - ⑥ Metal Framed Windows
 - ⑦ New Pre-Cast Concrete
 - ⑧ Timber windows
 - ⑨ Timber Paneling
 - ⑩ Brick
 - ⑪ Glass Brick



Revision history:

P01	22/01/16	Issued for Planning
Project:	Camden Town Hall	
Drawing title:	Proposed West Elevation Minor Material Amendment Application	
1996_X_GE(WE)02_PL		P01
Scale: 1:100@A1		

Orms

1 Oliver's Yard
55-71 City Road
London EC1Y 1HQ

0207 833 8533
orms@orms.co.uk
orms.co.uk

Do not scale. All dimensions to be confirmed on site.
Information contained in this drawing is the sole
copyright of Orms designers + architects ltd and is
not to be reproduced without permission.