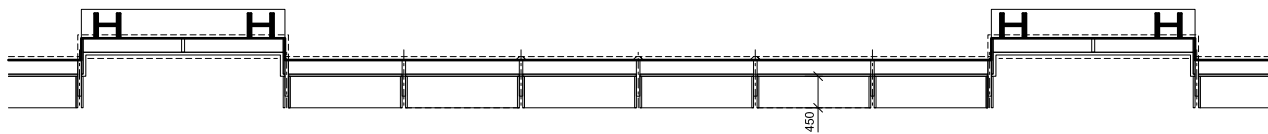
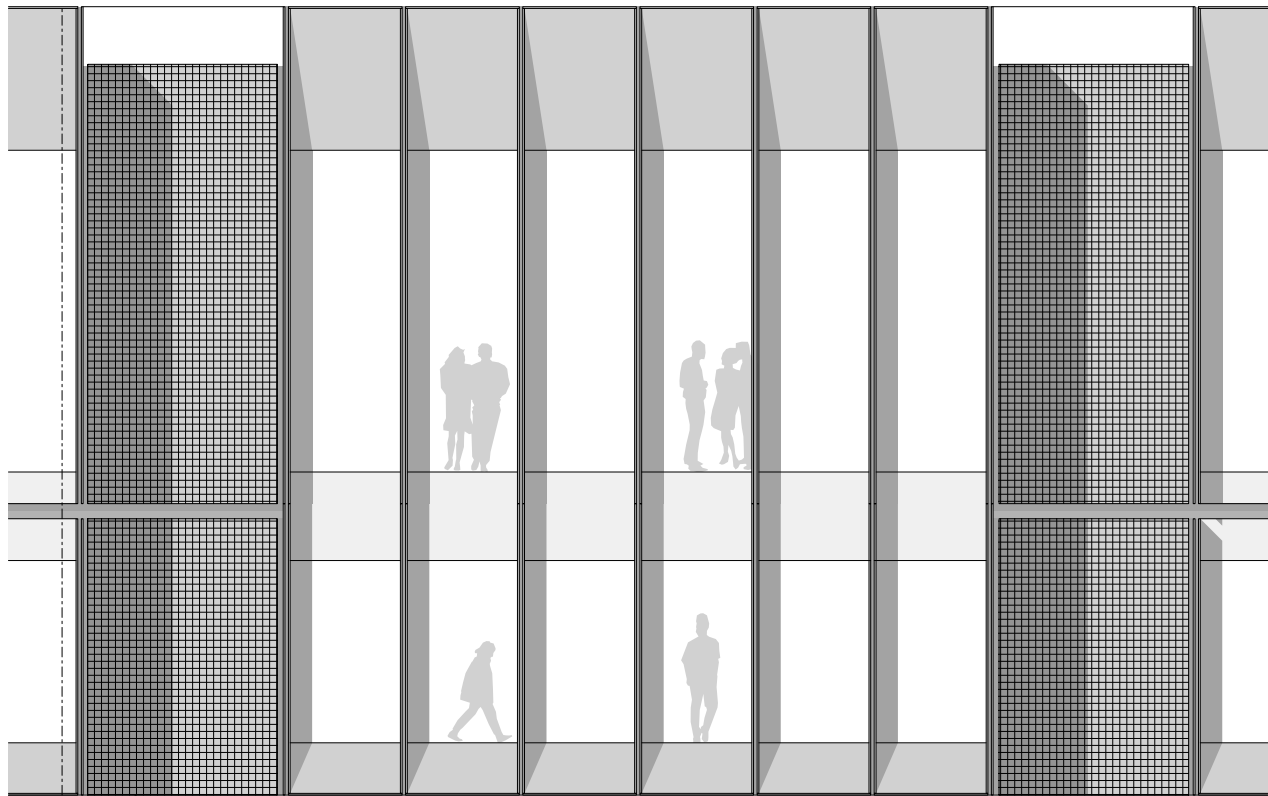


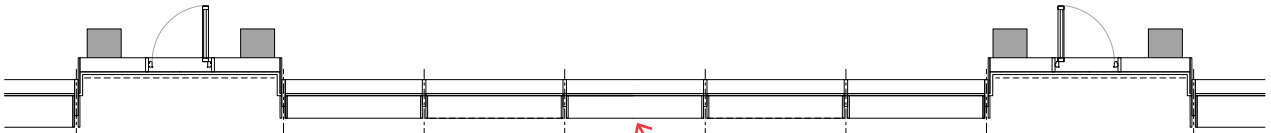
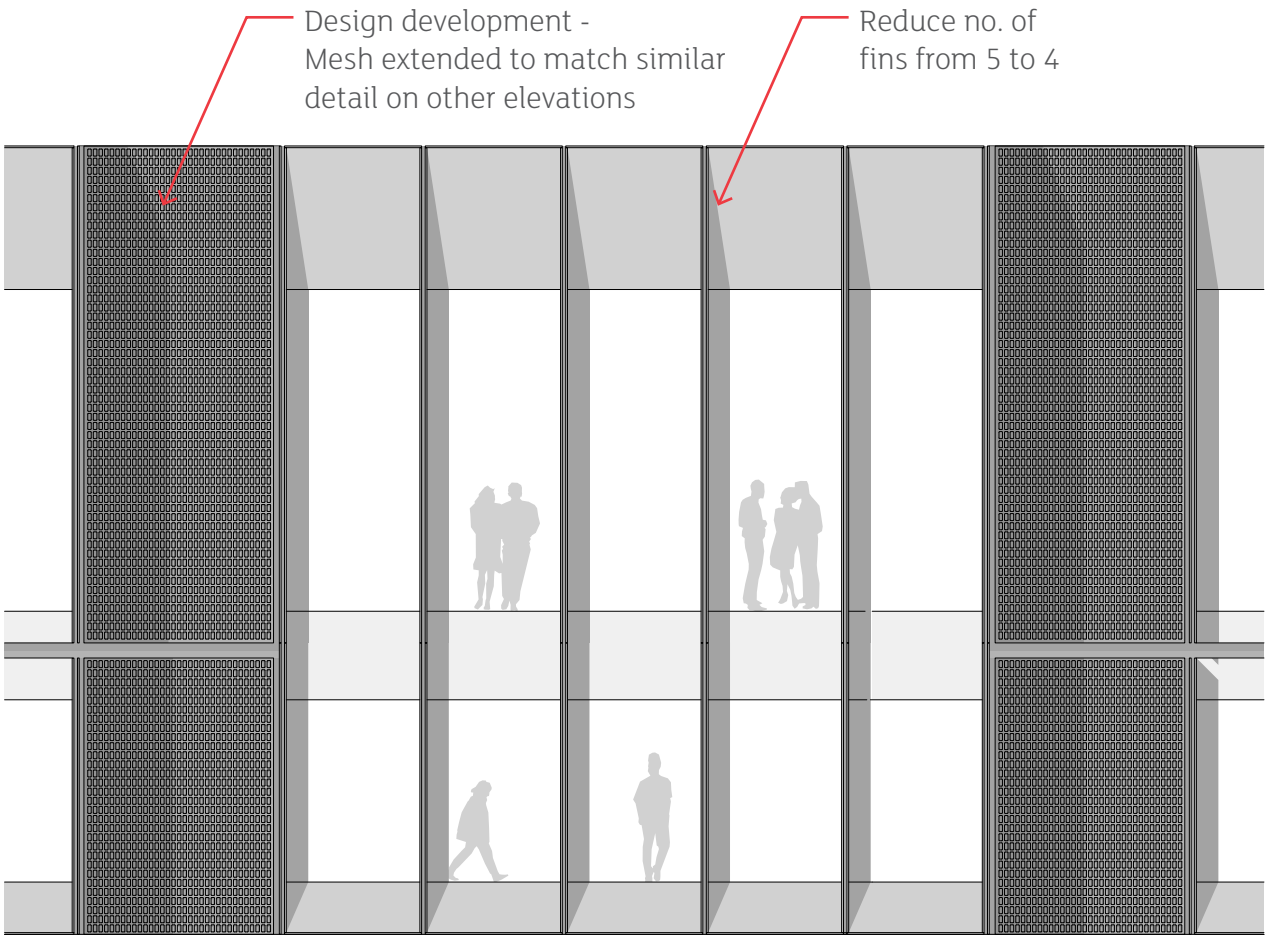
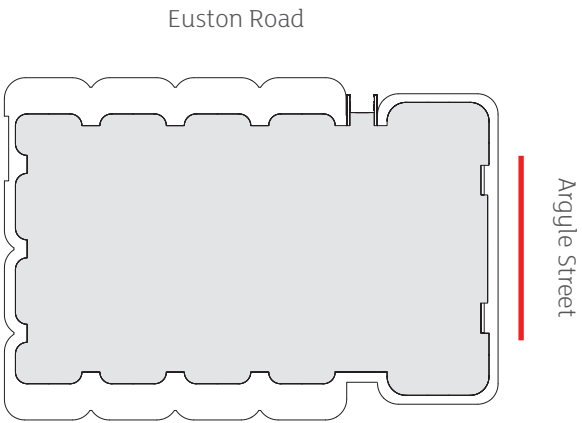
# Roof Extension

## East Elevation

The central bay to the east facade (9th and 10th floors) previously consisted of 6 glazed panels with 5 intermediate fins. The revised proposal now has 5 slightly wider glass panels with 4 intermediate fins to better match the proportions of the other bays and afford better views out of the building.



Approved Elevation



Proposed Elevation

Reduce depth of fins on centre bay only to match north and south facade. Corner bays on east facade to retain deeper fins