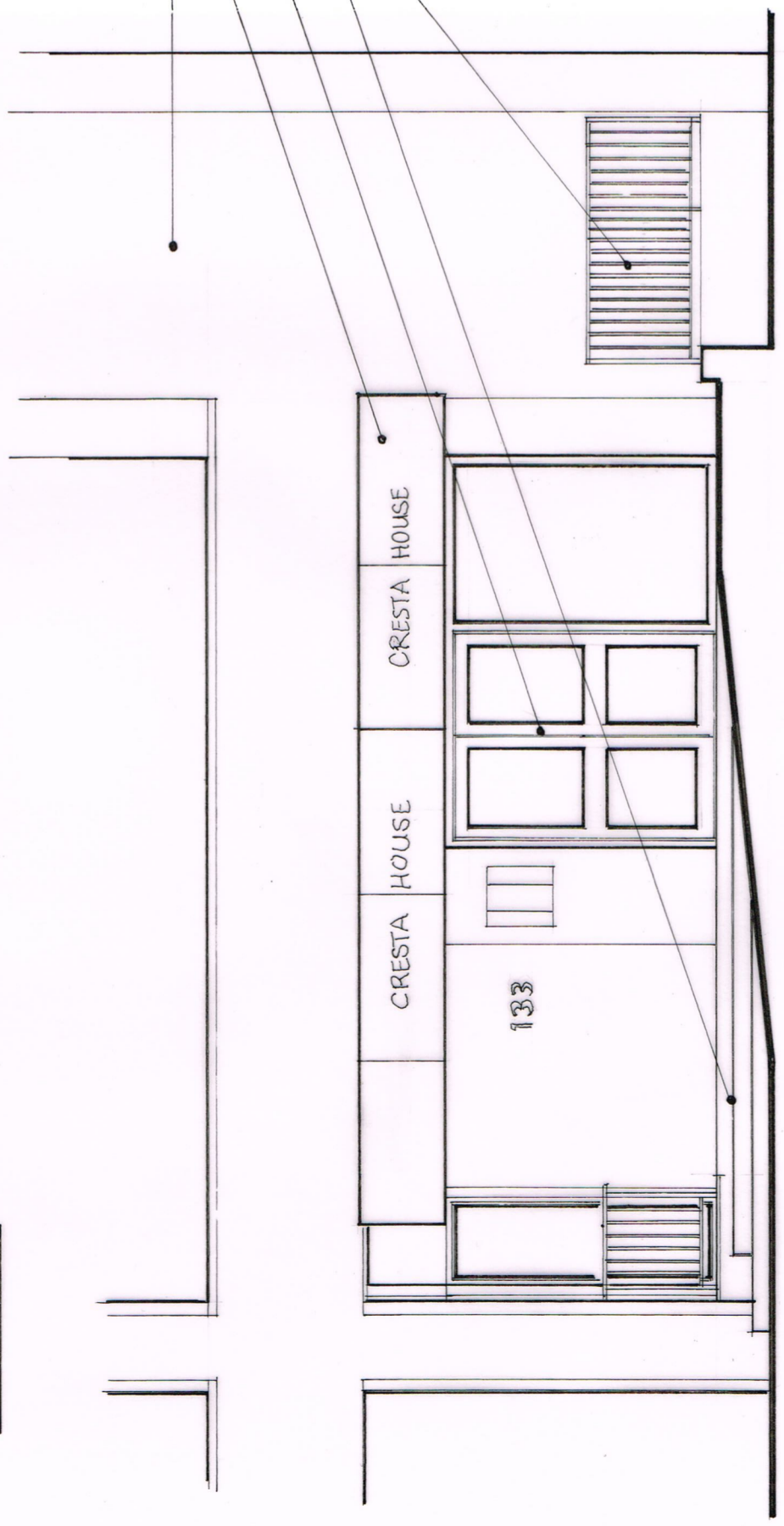


1:50 PLAN

- Polished Stainless Steel Double Doors and Glazed Panel
- Facing brickwork to External Walls
- Bands of Red Brick on Edge Paving
- Three Steps up to Entrance Level in Brick on Edge (Note: No Balustrade)
- Line of the polished Stainless Steel Entrance Canopy
- 400mm square Studded Clay Tiles Forming the Ramp
- Black Painted Metal Railings on top of a Dwarf Wall



SECTION AA

- Facing brickwork to External Walls
- Stainless Steel Entrance Canopy
- Polished Stainless Steel Double Doors and Glazed Panel
- Three Steps up to Entrance Level in Brick on Edge (Note: No Balustrade)
- Black Painted Metal Railings on top of a Dwarf Wall

<b>Project:</b>	<b>Scale:</b> 1:50 at A3	<b>Oakley Hough Limited</b>
<b>Proposed Refurbishment of the Entrance to Cresta House</b>	<b>Date:</b> March 2017	<b>The Barn, Stebbing Farm</b>
<b>133 Finchley Road, London NW3 6HT</b>		<b>Fishers Green, Stevenage,</b>
<b>Drawing Title:</b>		<b>Hertfordshire SG1 2JB</b>
<b>Existing Design of the Entrance</b>	<b>Drawing Number:</b> 760/E/01	<b>Tel: 01438 745288</b>
		<b>Email: john@oakleyhough.co.uk</b>