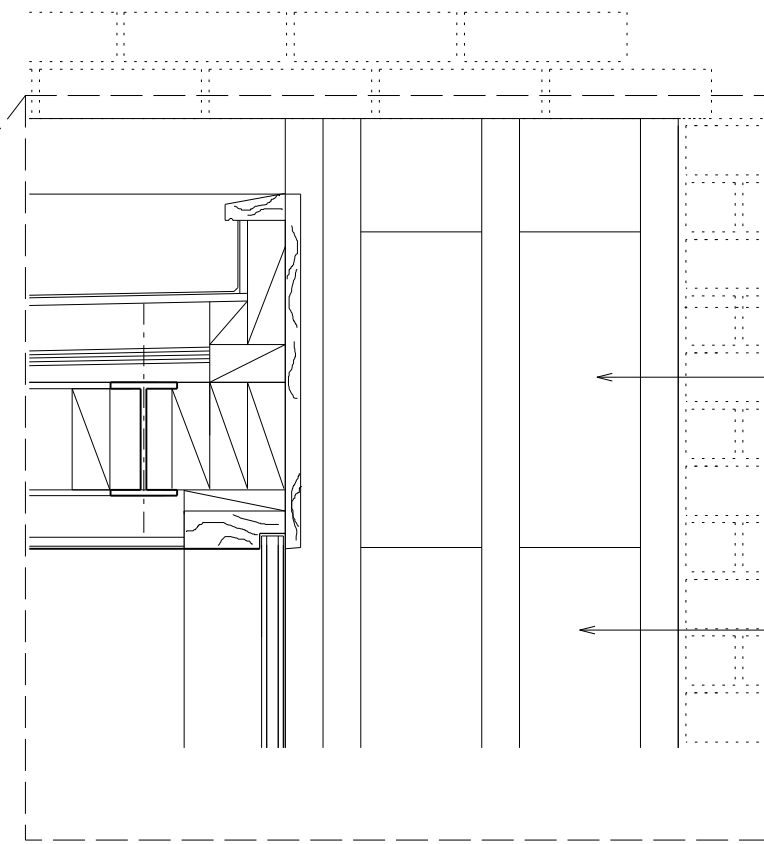
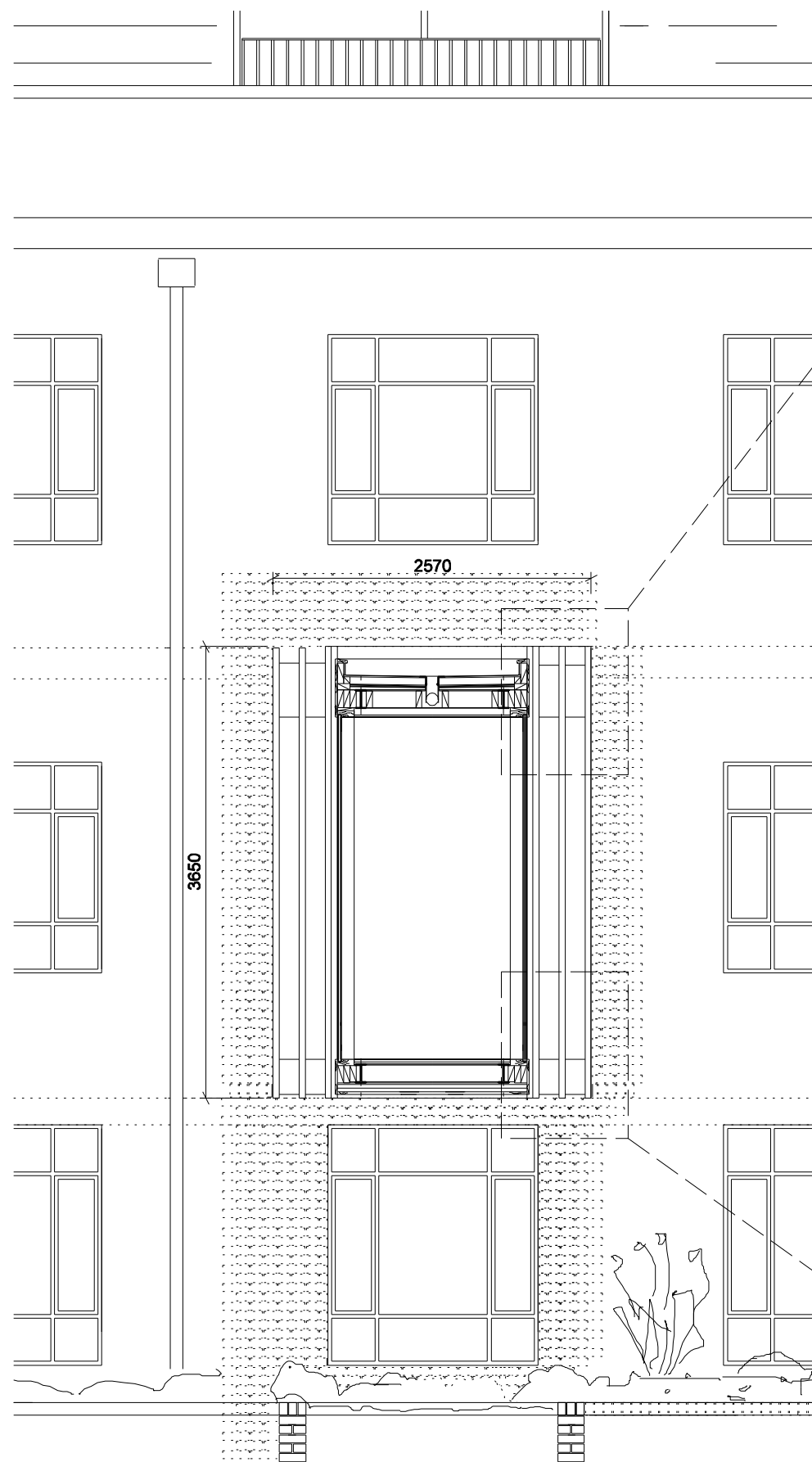


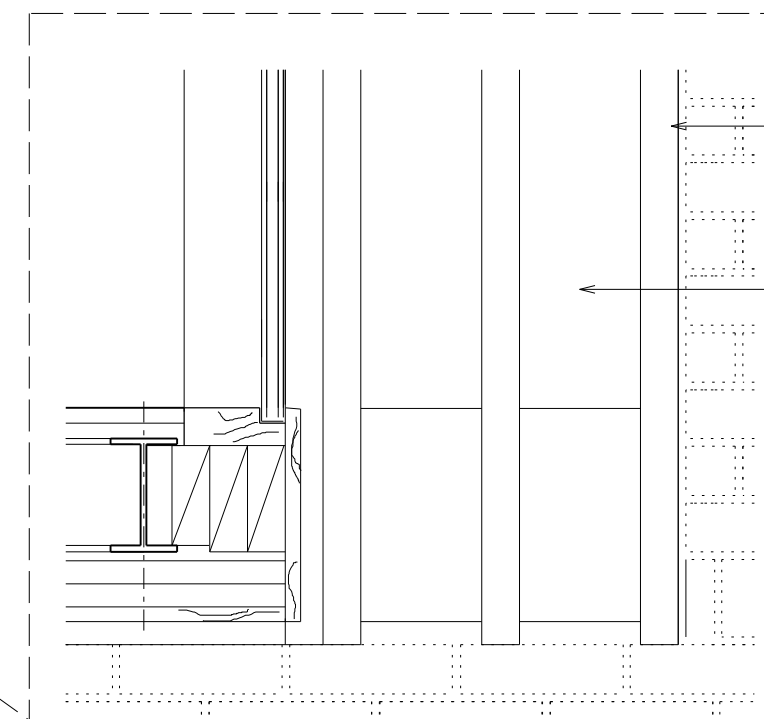
notes

The ownership of the copyright of this drawing is retained by the architect whose consent must be obtained before any use or reproduction of the drawing or part thereof can be made. This drawing should be read in conjunction with all other relevant documentation



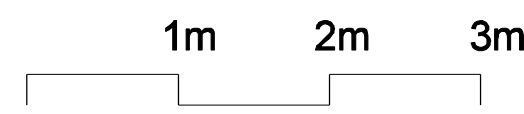
Timber. Accoya stained dark grey

Glazing .With Warm edge black spacer bar



Timber. Accoya stained dark grey

Glazing .With Warm edge black spacer bar



/ 31.03.17 For Planning
rev date amendment
project unit 8, 73 maygrove road

scale 1 : 50 @ A3

drawing Proposed Section

drawing no PL - 301

Paul+O Architects ltd

unit 8, 73 maygrove road
west hampstead
london nw6 2eg
t/f +44 020 7604 3818

paul_o@onetel.com