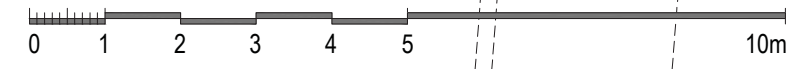


Existing Basement Floor Plan



Issued For
PLANNING

General Notes:
THIS DRAWING HAS BEEN PREPARED BY DS DESIGN SOLUTIONS AND THE DATA CONTAINED HEREIN MAY BE USED OR REPRODUCED ONLY WITH DS DESIGN SOLUTIONS' APPROVAL.

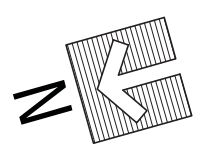
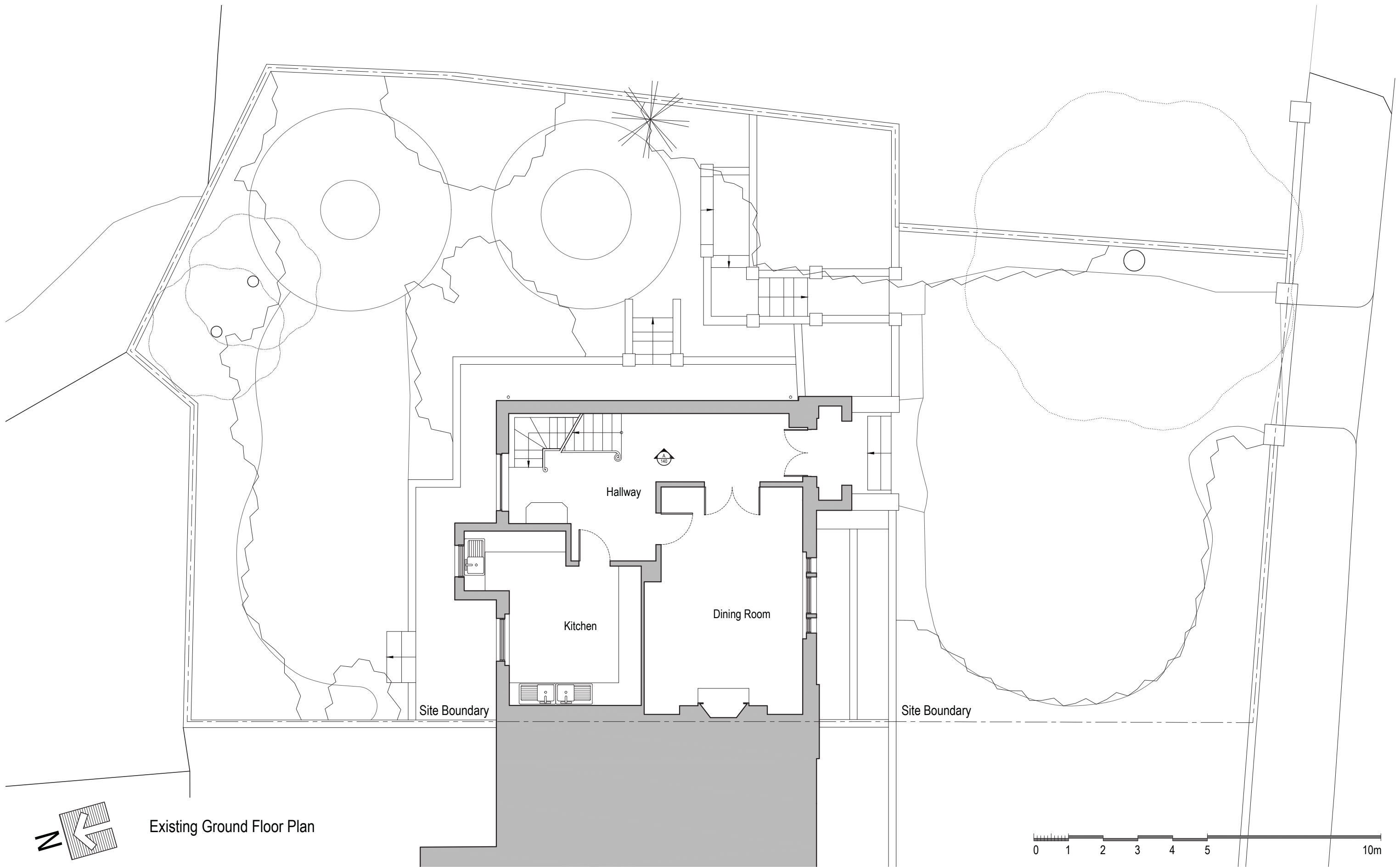
Rev.	Description	Date	Signed	Checked

--	--

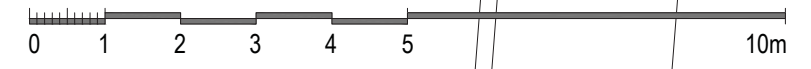
Scale 1:100 @ A3 1:50 @ A1

Scale 1:100 @ A3	Date 20.04.2016	Drawn by AL	Checked by DS
Drawing Title Existing Plan Basement Floor Plan			
Project 8 Prince Albert Road London NW1 7SR			

 561 Finchley Road London NW3 7BJ Phone 020 7433 3939 Fax 020 7794 4279 www.DesignSolutionsUK.com	Project no. 14/0313	Drawing no. 001	Revision P00
---	------------------------	--------------------	-----------------



Existing Ground Floor Plan



Issued For
PLANNING


General Notes:
THIS DRAWING HAS BEEN PREPARED BY DS DESIGN SOLUTIONS AND THE DATA CONTAINED HEREIN MAY BE USED OR REPRODUCED ONLY WITH DS DESIGN SOLUTIONS' APPROVAL.

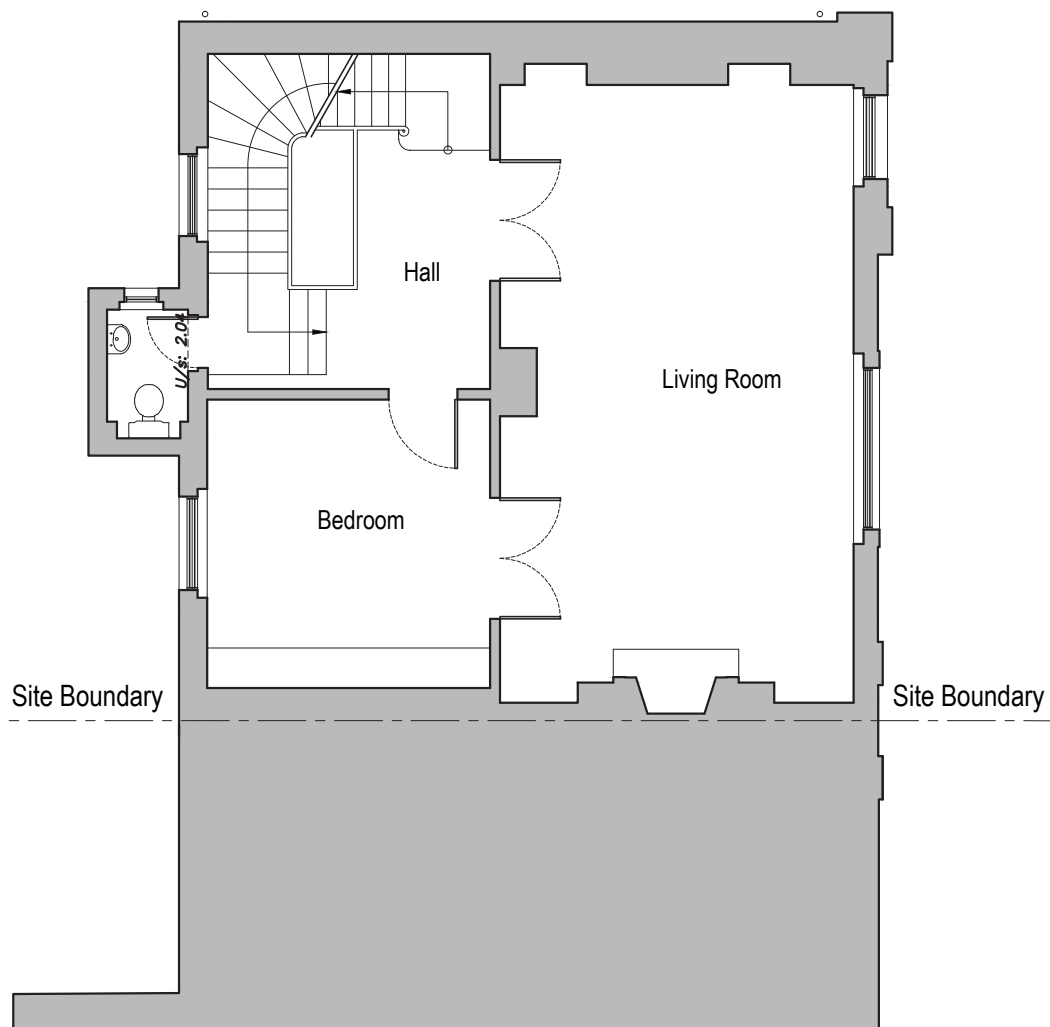
Rev.	Description	Date	Signed	Checked

--	--

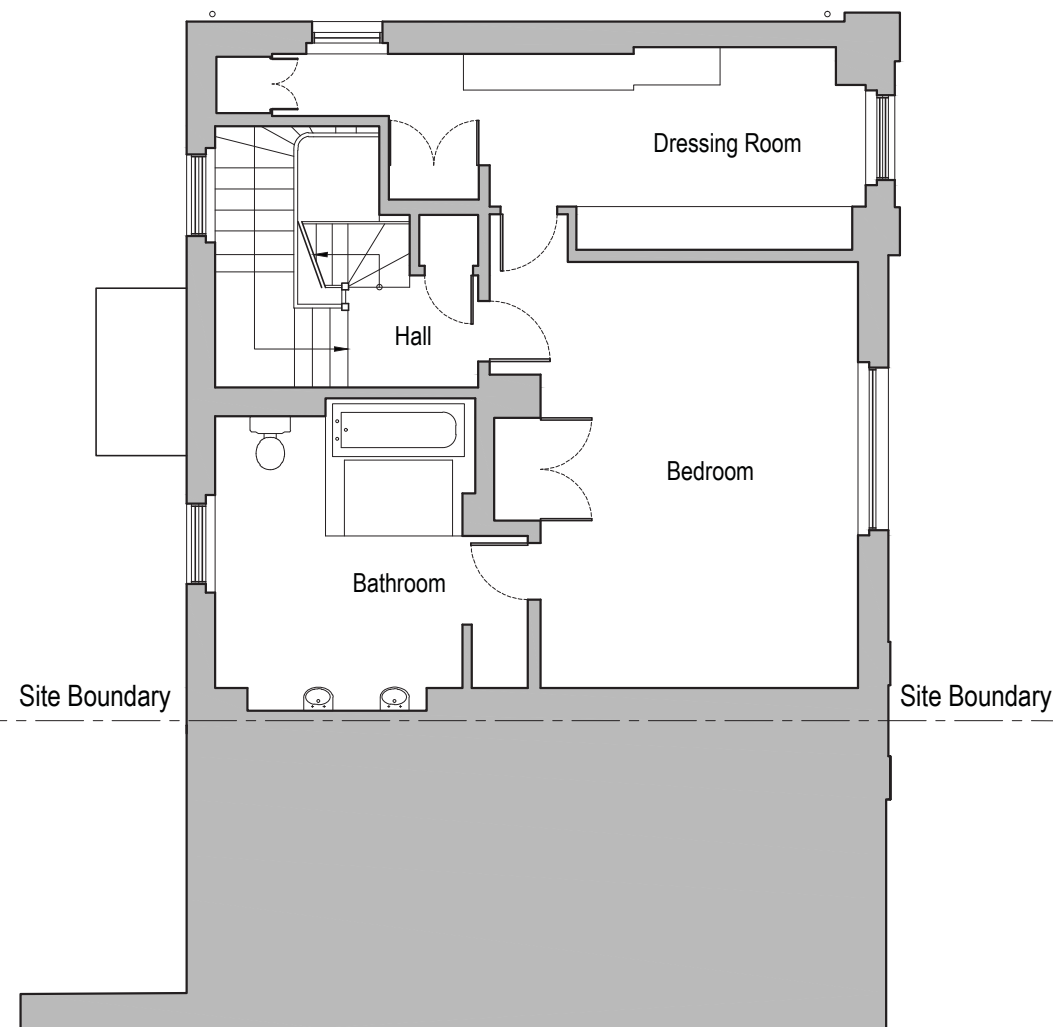
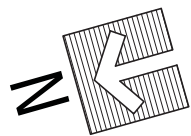
Scale 1:100 @ A3 1:50 @ A1

Scale 1:100 @ A3	Date 20.04.2016	Drawn by AL	Checked by DS
Drawing Title Existing Plan Ground Floor Plan			
Project 8 Prince Albert Road London NW1 7SR			

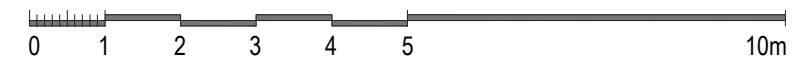
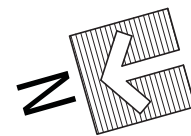
	561 Finchley Road London NW3 7BJ Phone 020 7433 3939 Fax 020 7794 4279 www.DesignSolutionsUK.com		
	Project no. 14/0313	Drawing no. 002	Revision P01



Existing First Floor Plan



Existing Second Floor Plan



Issued For
PLANNING

General Notes:
THIS DRAWING HAS BEEN PREPARED BY DS DESIGN SOLUTIONS AND THE DATA CONTAINED HEREIN MAY BE USED OR REPRODUCED ONLY WITH DS DESIGN SOLUTIONS' APPROVAL.

Rev.	Description	Date	Signed	Checked

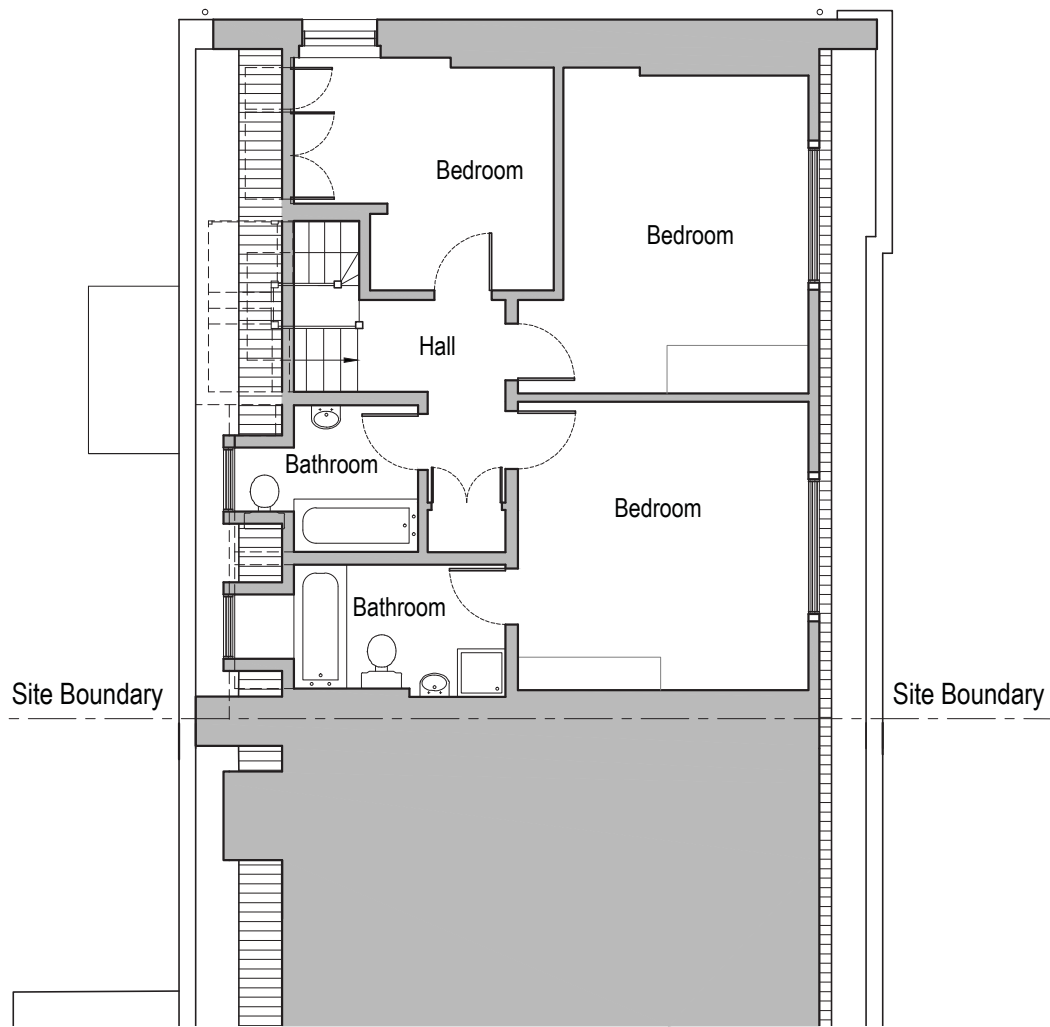
--

Scale 1:100 @ A3 1:50 @ A1

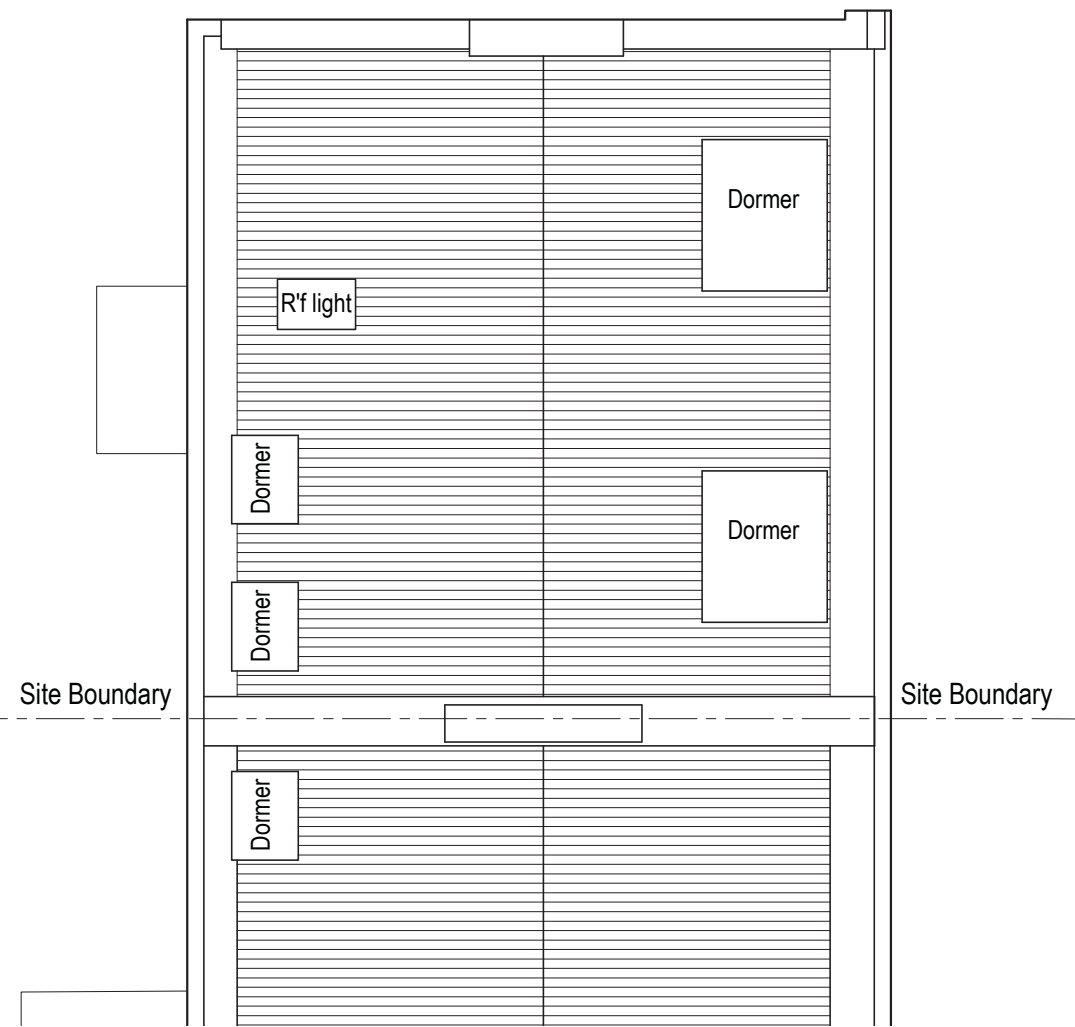
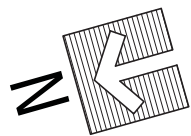
Scale 1:100 @ A3	Date 20.04.2016	Drawn by AL	Checked by DS
Drawing Title Existing Plan - First Floor Plan - Second Floor Plan			
Project 8 Prince Albert Road London NW1 7SR			

561 Finchley Road
London NW3 7BJ
Phone 020 7433 3939
Fax 020 7794 4279
www.DesignSolutionsUK.com

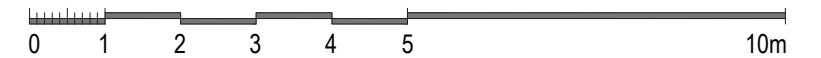
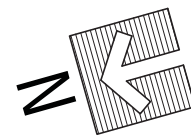
Project no. 14/0313	Drawing no. 003	Revision P00
------------------------	--------------------	-----------------



Existing Third Floor Plan



Existing Roof Plan



Issued For
PLANNING

General Notes:
THIS DRAWING HAS BEEN PREPARED BY DS DESIGN SOLUTIONS AND THE DATA CONTAINED HEREIN MAY BE USED OR REPRODUCED ONLY WITH DS DESIGN SOLUTIONS' APPROVAL.

Rev.	Description	Date	Signed	Checked

--

Scale 1:100 @ A3 1:50 @ A1

Scale	Date	Drawn by	Checked by
1:100 @ A3	20.04.2016	AL	DS
Drawing Title			
Existing Plan - Third Floor Plan - Roof Plan			
Project			
8 Prince Albert Road London NW1 7SR			

	561 Finchley Road London NW3 7BJ Phone 020 7433 3939 Fax 020 7794 4279 www.DesignSolutionsUK.com		
	Project no.	Drawing no.	Revision
14/0313	004	P00	

9 Prince Albert Road

8 Prince Albert Road

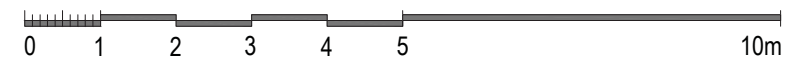
7 Prince Albert Road

Site Boundary

Site Boundary



Existing Front Elevation



Issued For
PLANNING

General Notes:
THIS DRAWING HAS BEEN PREPARED BY DS DESIGN SOLUTIONS AND THE DATA CONTAINED HEREIN MAY BE USED OR REPRODUCED ONLY WITH DS DESIGN SOLUTIONS' APPROVAL.

Rev.	Description	Date	Signed	Checked

--

Scale 1:100 @ A3 1:50 @ A1

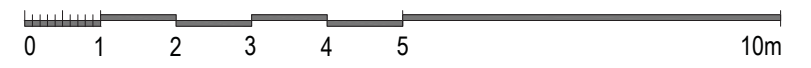
Scale 1:100 @ A3	Date 20.04.2016	Drawn by AL	Checked by DS
Drawing Title Existing Elevation Front Elevation			
Project 8 Prince Albert Road London NW1 7SR			

561 Finchley Road
London NW3 7BJ
Phone 020 7433 3939
Fax 020 7794 4279
www.DesignSolutionsUK.com

Project no. 14/0313	Drawing no. 021	Revision P00
-------------------------------	---------------------------	------------------------



Existing Rear Elevation



Issued For
PLANNING

General Notes:
THIS DRAWING HAS BEEN PREPARED BY DS DESIGN SOLUTIONS AND THE DATA CONTAINED HEREIN MAY BE USED OR REPRODUCED ONLY WITH DS DESIGN SOLUTIONS' APPROVAL.

Rev.	Description	Date	Signed	Checked

--

Scale 1:100 @ A3
1:50 @ A1

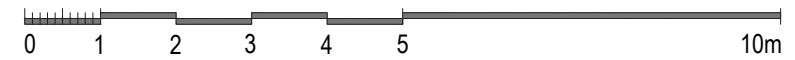
Scale	Date	Drawn by	Checked by
1:100 @ A3	20.04.2016	AL	DS
Drawing Title			
Existing Elevation Rear Elevations			
Project			
8 Prince Albert Road London NW1 7SR			

561 Finchley Road
London NW3 7BJ
Phone 020 7433 3939
Fax 020 7794 4279
www.DesignSolutionsUK.com

Project no. 14/0313	Drawing no. 022	Revision P00
------------------------	--------------------	-----------------



Existing Side Elevation



Issued For
PLANNING

General Notes:
THIS DRAWING HAS BEEN PREPARED BY DS DESIGN SOLUTIONS AND THE DATA CONTAINED HEREIN MAY BE USED OR REPRODUCED ONLY WITH DS DESIGN SOLUTIONS' APPROVAL.

Rev.	Description	Date	Signed	Checked

--

Scale 1:100 @ A3 1:50 @ A1

Scale 1:100 @ A3	Date 20.04.2016	Drawn by AL	Checked by DS
Drawing Title Existing Elevation Side Elevations			
Project 8 Prince Albert Road London NW1 7SR			

561 Finchley Road
London NW3 7BJ
Phone 020 7433 3939
Fax 020 7794 4279
www.DesignSolutionsUK.com

Project no. 14/0313	Drawing no. 023	Revision P00
-------------------------------	---------------------------	------------------------