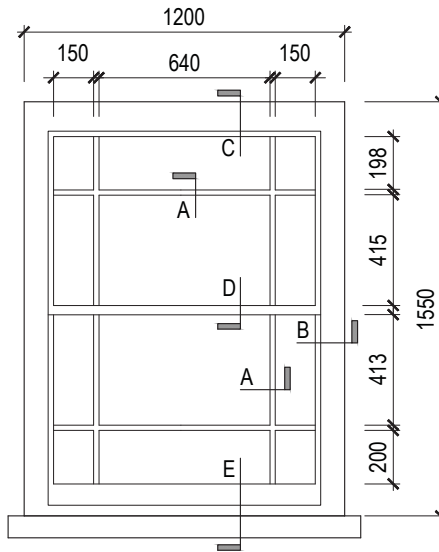
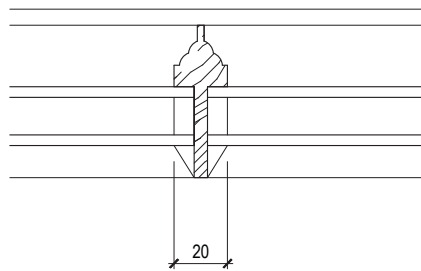


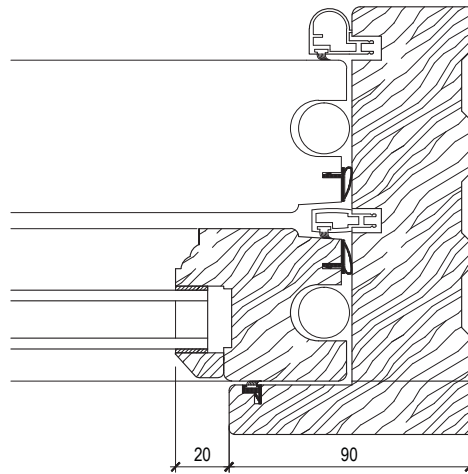
Window Type 1
Scale 1:20 @ A3



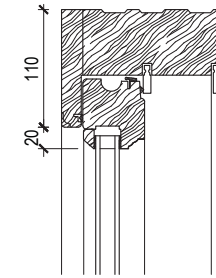
Window Type 2
Scale 1:20 @ A3



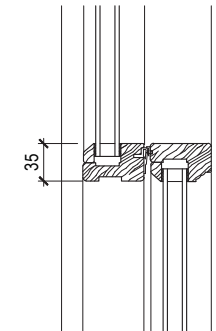
Detail A
Scale 1:2 @ A3



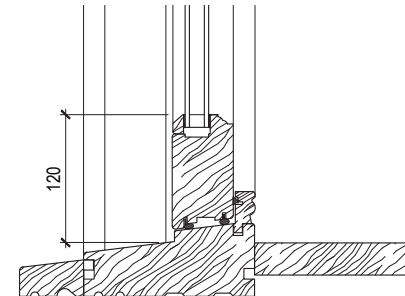
Detail B
Scale 1:2 @ A3



Detail C
Scale 1:5 @ A3



Detail D
Scale 1:5 @ A3



Detail E
Scale 1:5 @ A3

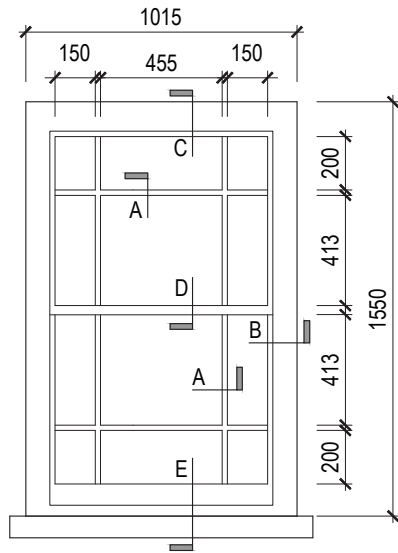
Issued For	PLANNING
General Notes:	THIS DRAWING HAS BEEN PREPARED BY DS DESIGN SOLUTIONS AND THE DATA CONTAINED HEREIN MAY BE USED OR REPRODUCED ONLY WITH DS DESIGN SOLUTIONS' APPROVAL.

Rev.	Description	Date	Signed	Checked

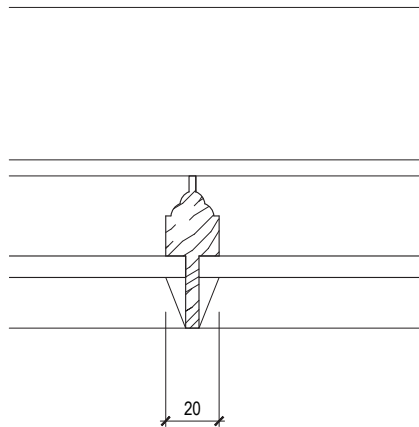
--	--

Scale	Date	Drawn by	Checked by
Various	21.06.2016	AL	DS
Drawing Title			
Double Glazed Windows Details			
Project			
8 Prince Albert Road London NW1 7SR			

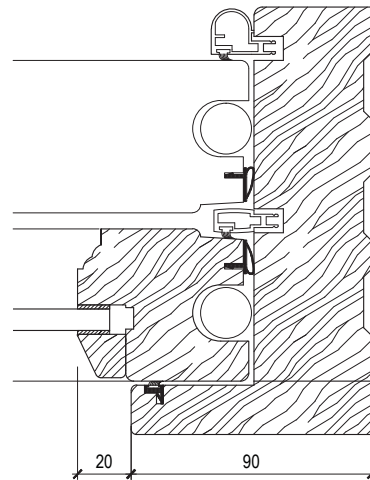
 design solutions www.DesignSolutionsUK.com	561 Finchley Road London NW3 7BJ Phone 020 7433 3939 Fax 020 7794 4279		
	Project no.	Drawing no.	Revision
14/0313	401	P00	



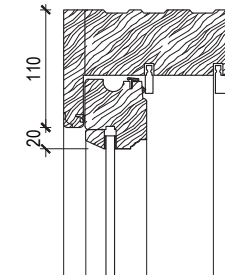
Window Type 3
Scale 1:20 @ A3



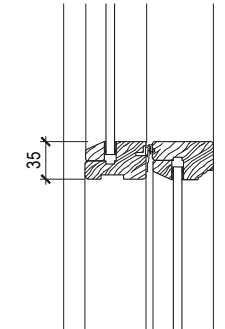
Detail A
Scale 1:2 @ A3



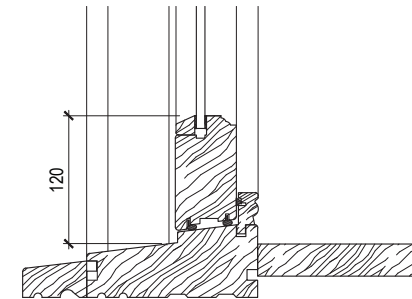
Detail B
Scale 1:2 @ A3



Detail C
Scale 1:5 @ A3



Detail D
Scale 1:5 @ A3



Detail E
Scale 1:5 @ A3

Timber windows painted white
to match existing with an 8mm
Single glazed unit installed.

Issued For	PLANNING
General Notes:	THIS DRAWING HAS BEEN PREPARED BY DS DESIGN SOLUTIONS AND THE DATA CONTAINED HEREIN MAY BE USED OR REPRODUCED ONLY WITH DS DESIGN SOLUTIONS' APPROVAL.

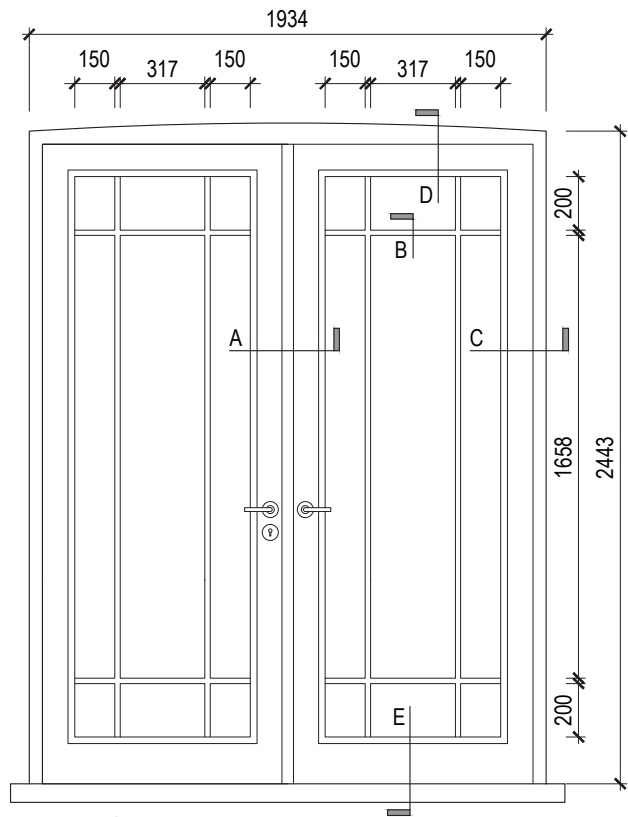
Rev.	Description	Date	Signed	Checked

--

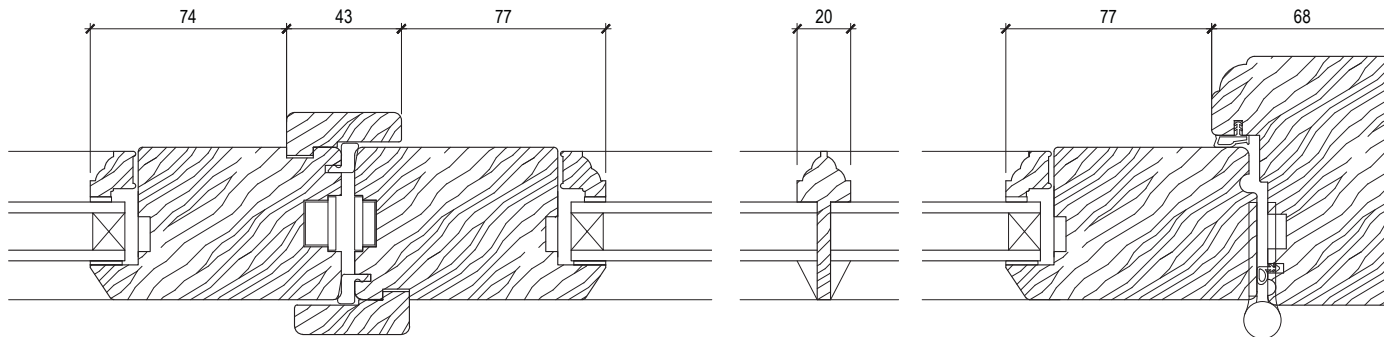
--

Scale	Date	Drawn by	Checked by
Various	21.06.2016	AL	DS
Drawing Title			
Single Glazed Window Details			
Project			
8 Prince Albert Road London NW1 7SR			

 design solutions	561 Finchley Road London NW3 7BJ Phone 020 7433 3939 Fax 020 7794 4279 www.DesignSolutionsUK.com		
	Project no.	Drawing no.	Revision
14/0313	402	P00	



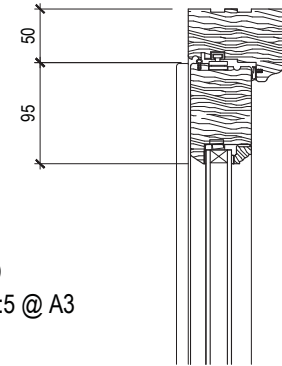
Door Type 1
Scale 1:20 @ A3



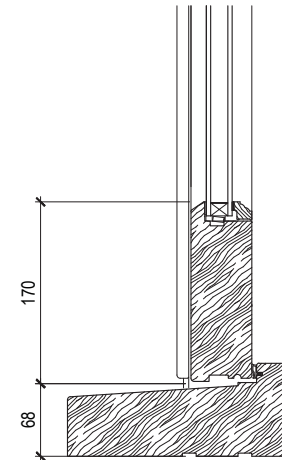
Detail A
Scale 1:2 @ A3

Detail B
Scale 1:2 @ A3

Detail C
Scale 1:2 @ A3




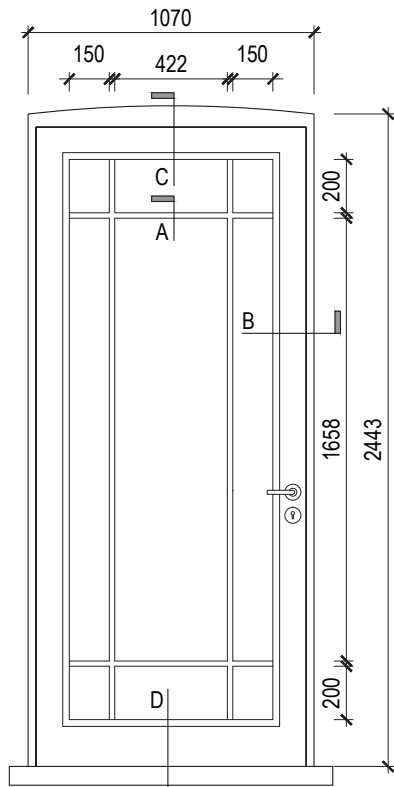
Detail D
Scale 1:5 @ A3



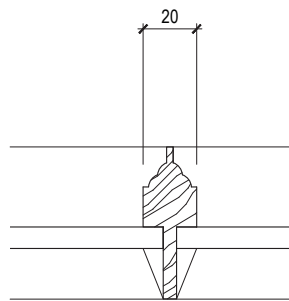
Detail E
Scale 1:5 @ A3

Timber Doors painted white
to match existing with an 8mm
Double glazed unit installed.

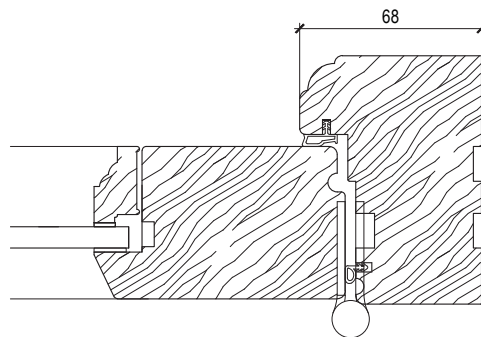
Issued For PLANNING		Rev.	Description	Date	Signed	Checked	Indicative Ironmongry Shown	Scale 1:5 / 1:25 @ A3	Date 21.06.2016	Drawn by AL	Checked by DS	 561 Finchley Road London NW3 7BJ Phone 020 7433 3939 Fax 020 7794 4279 www.DesignSolutionsUK.com		
General Notes: THIS DRAWING HAS BEEN PREPARED BY DS DESIGN SOLUTIONS AND THE DATA CONTAINED HEREIN MAY BE USED OR REPRODUCED ONLY WITH DS DESIGN SOLUTIONS' APPROVAL.									Drawing Title Double Door Details		Project 8 Prince Albert Road London NW1 7SR		Project no. 14/0313	Drawing no. 403



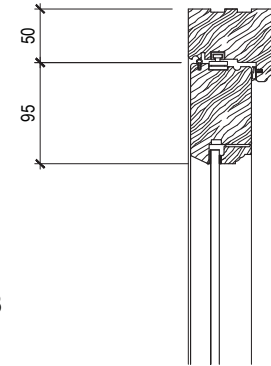
Door Type 2
Scale 1:20 @ A3



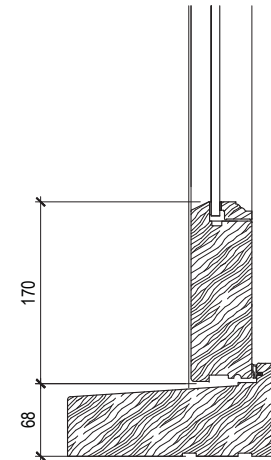
Detail A
Scale 1:2 @ A3



Detail B
Scale 1:2 @ A3




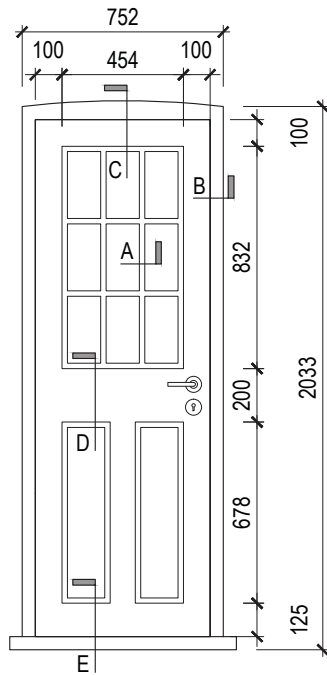
Detail C
Scale 1:5 @ A3



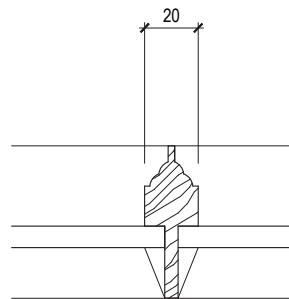
Detail D
Scale 1:5 @ A3

Timber Doors painted white
to match existing with an 8mm
Single glazed unit installed.

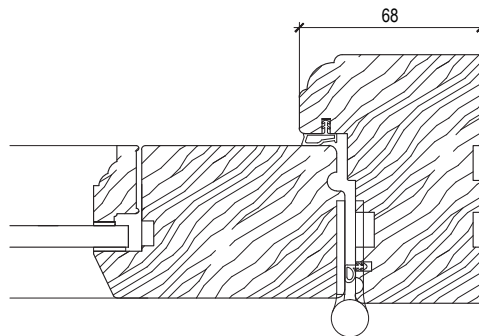
Issued For PLANNING		Rev.	Description	Date	Signed	Checked	Indicative Ironmongry Shown	Scale	Date	Drawn by	Checked by	 561 Finchley Road London NW3 7BJ Phone 020 7433 3939 Fax 020 7794 4279 www.DesignSolutionsUK.com	
General Notes: THIS DRAWING HAS BEEN PREPARED BY DS DESIGN SOLUTIONS AND THE DATA CONTAINED HEREIN MAY BE USED OR REPRODUCED ONLY WITH DS DESIGN SOLUTIONS' APPROVAL.									Various	21.06.2016	AL		DS
								Drawing Title Single Glazed Single Door Details		Project 8 Prince Albert Road London NW1 7SR		Drawing no. 404	Revision P00



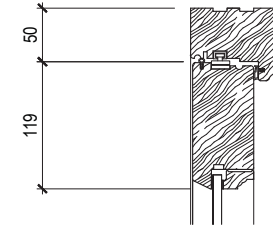
Door Type 4
Scale 1:25 @ A3



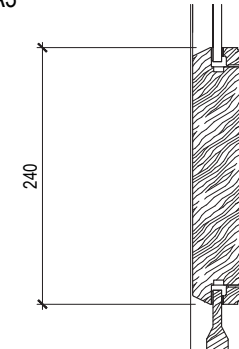
Detail A
Scale 1:2 @ A3



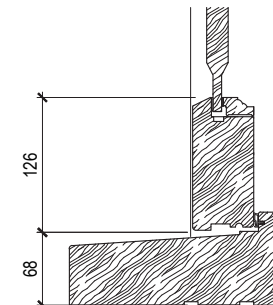
Detail B
Scale 1:2 @ A3



Detail C
Scale 1:5 @ A3



Detail D
Scale 1:5 @ A3



Detail E
Scale 1:5 @ A3

Timber Doors painted white
to match existing with an 8mm
Single glazed unit installed.

Issued For	PLANNING
General Notes:	THIS DRAWING HAS BEEN PREPARED BY DS DESIGN SOLUTIONS AND THE DATA CONTAINED HEREIN MAY BE USED OR REPRODUCED ONLY WITH DS DESIGN SOLUTIONS' APPROVAL.

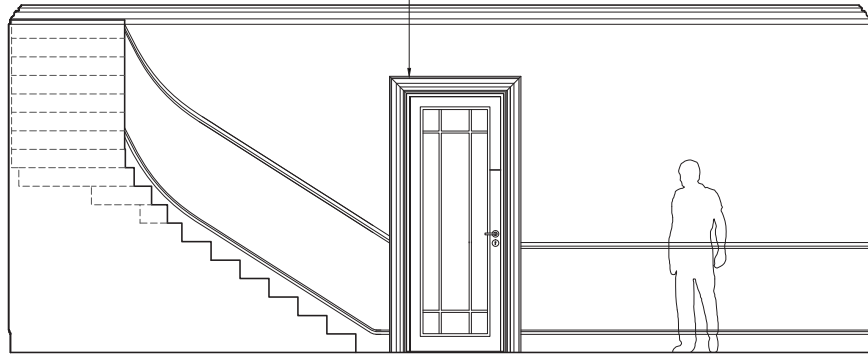
Rev.	Description	Date	Signed	Checked

Indicative Ironmongry Shown

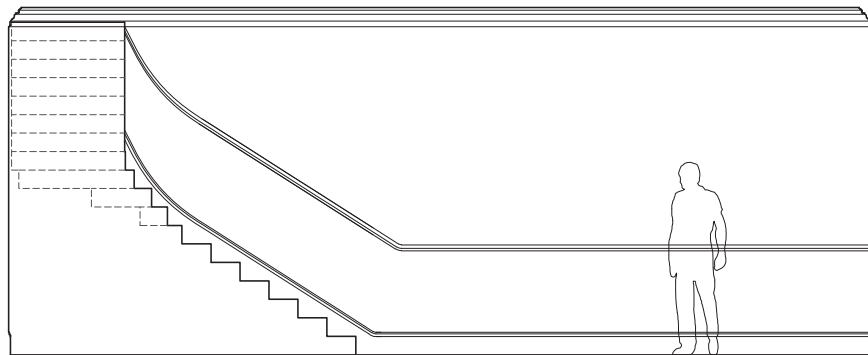
Scale	Date	Drawn by	Checked by
Various	21.06.2016	AL	DS
Drawing Title			
Single Glazed Single Door Details			
Project			
8 Prince Albert Road London NW1 7SR			

 561 Finchley Road London NW3 7BJ Phone 020 7433 3939 Fax 020 7794 4279 www.DesignSolutionsUK.com	Project no.	Drawing no.	Revision
	14/0313	405	P00

New Door to Terrace;
Architraves to match existing



Proposed Elevation A



Existing Elevation A

Issued For	PLANNING
General Notes:	THIS DRAWING HAS BEEN PREPARED BY DS DESIGN SOLUTIONS AND THE DATA CONTAINED HEREIN MAY BE USED OR REPRODUCED ONLY WITH DS DESIGN SOLUTIONS' APPROVAL.

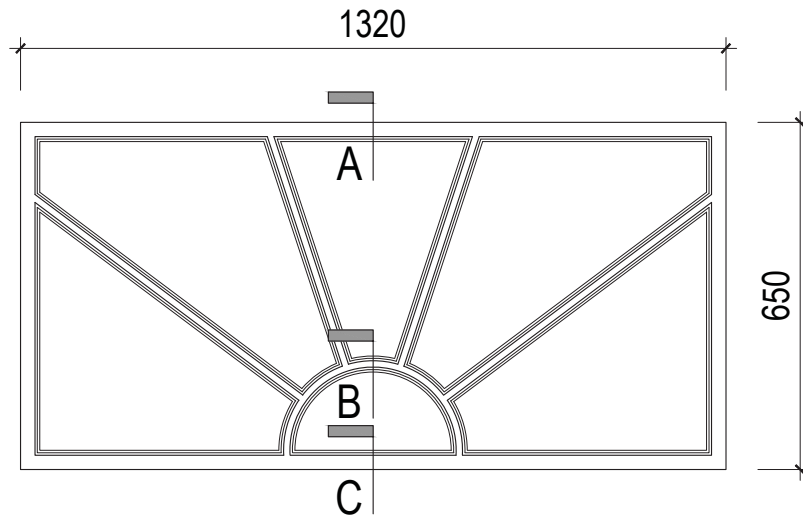
Rev.	Description	Date	Signed	Checked

--

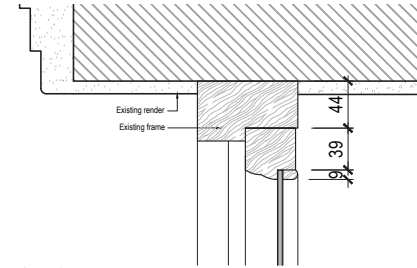
--

Scale	Date	Drawn by	Checked by
Various	21.06.2016	AL	DS
Drawing Title			
Existing and Proposed Internal Elevation A			
Project			
8 Prince Albert Road London NW1 7SR			

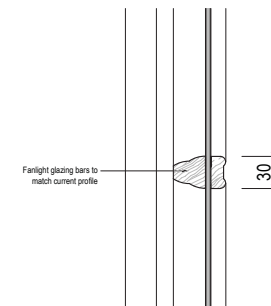
 design solutions	561 Finchley Road London NW3 7BJ Phone 020 7433 3939 Fax 020 7794 4279 www.DesignSolutionsUK.com		
	Project no.	Drawing no.	Revision
14/0313	140	P00	



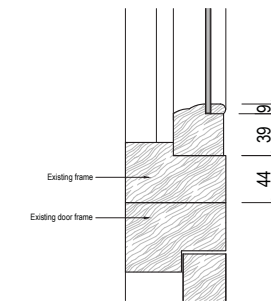
Proposed Fanlight Above Main Entrance Door
Scale 1:10 @ A3



Detail A
Scale 1:5 @ A3




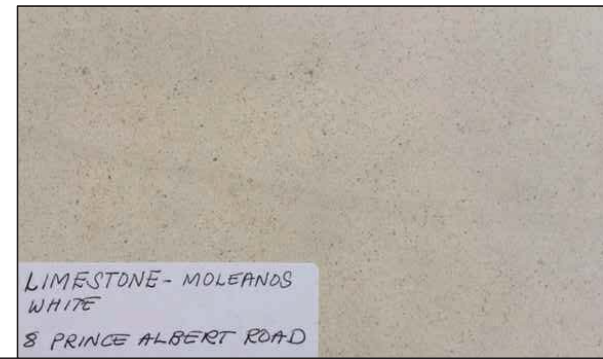
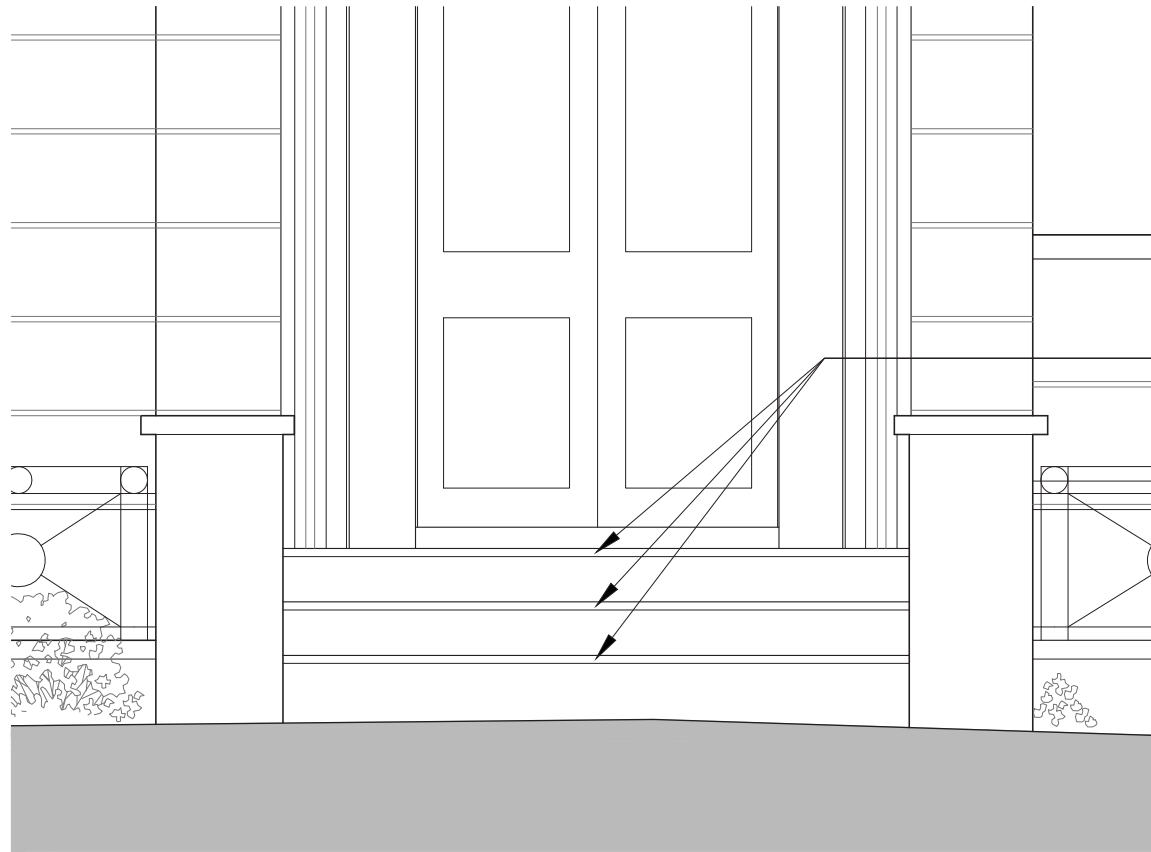
Detail B
Scale 1:5 @ A3



Detail C
Scale 1:5 @ A3

Timber to be painted white
to match existing with an 8mm
Single glazed unit installed.

Issued For PLANNING		Rev.	Description	Date	Signed	Checked			Scale Various	Date 21.06.2016	Drawn by AL	Checked by DS	 561 Finchley Road London NW3 7BJ Phone 020 7433 3939 Fax 020 7794 4279 www.DesignSolutionsUK.com		
General Notes: THIS DRAWING HAS BEEN PREPARED BY DS DESIGN SOLUTIONS AND THE DATA CONTAINED HEREIN MAY BE USED OR REPRODUCED ONLY WITH DS DESIGN SOLUTIONS' APPROVAL.									Drawing Title Proposed Fanlight Above Entrance Door Details						
									Project 8 Prince Albert Road London NW1 7SR						
													Project no. 14/0313	Drawing no. 406	Revision P00



Proposed Material To Entrance Steps

Proposed Front Entrance
Scale 1:20 @ A3

Issued For	PLANNING
General Notes:	THIS DRAWING HAS BEEN PREPARED BY DS DESIGN SOLUTIONS AND THE DATA CONTAINED HEREIN MAY BE USED OR REPRODUCED ONLY WITH DS DESIGN SOLUTIONS' APPROVAL.

Rev.	Description	Date	Signed	Checked

--

--

Scale	Date	Drawn by	Checked by
1:20 @ A3	21.06.2016	AL	DS
Drawing Title			
Proposed Front Entrance Steps			
Project			
8 Prince Albert Road London NW1 7SR			

 design solutions	561 Finchley Road London NW3 7BJ Phone 020 7433 3939 Fax 020 7794 4279 www.DesignSolutionsUK.com		
	Project no.	Drawing no.	Revision
14/0313	407	P00	