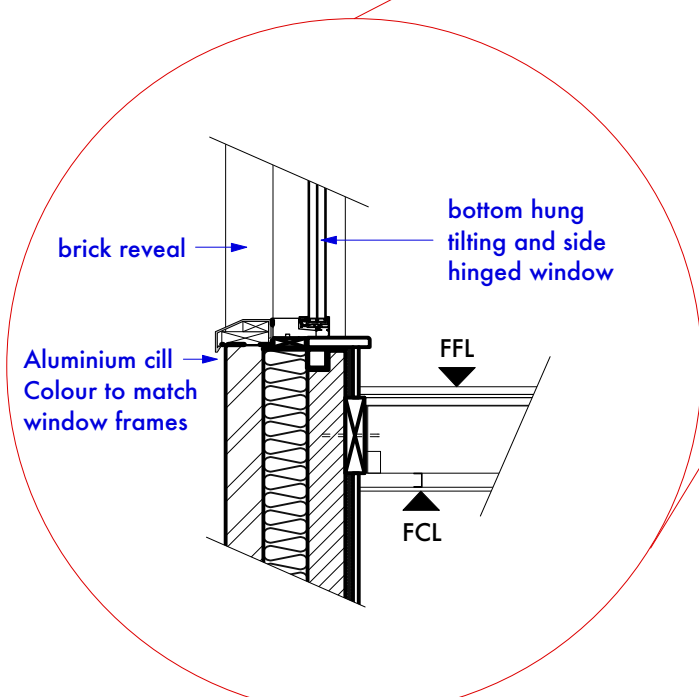
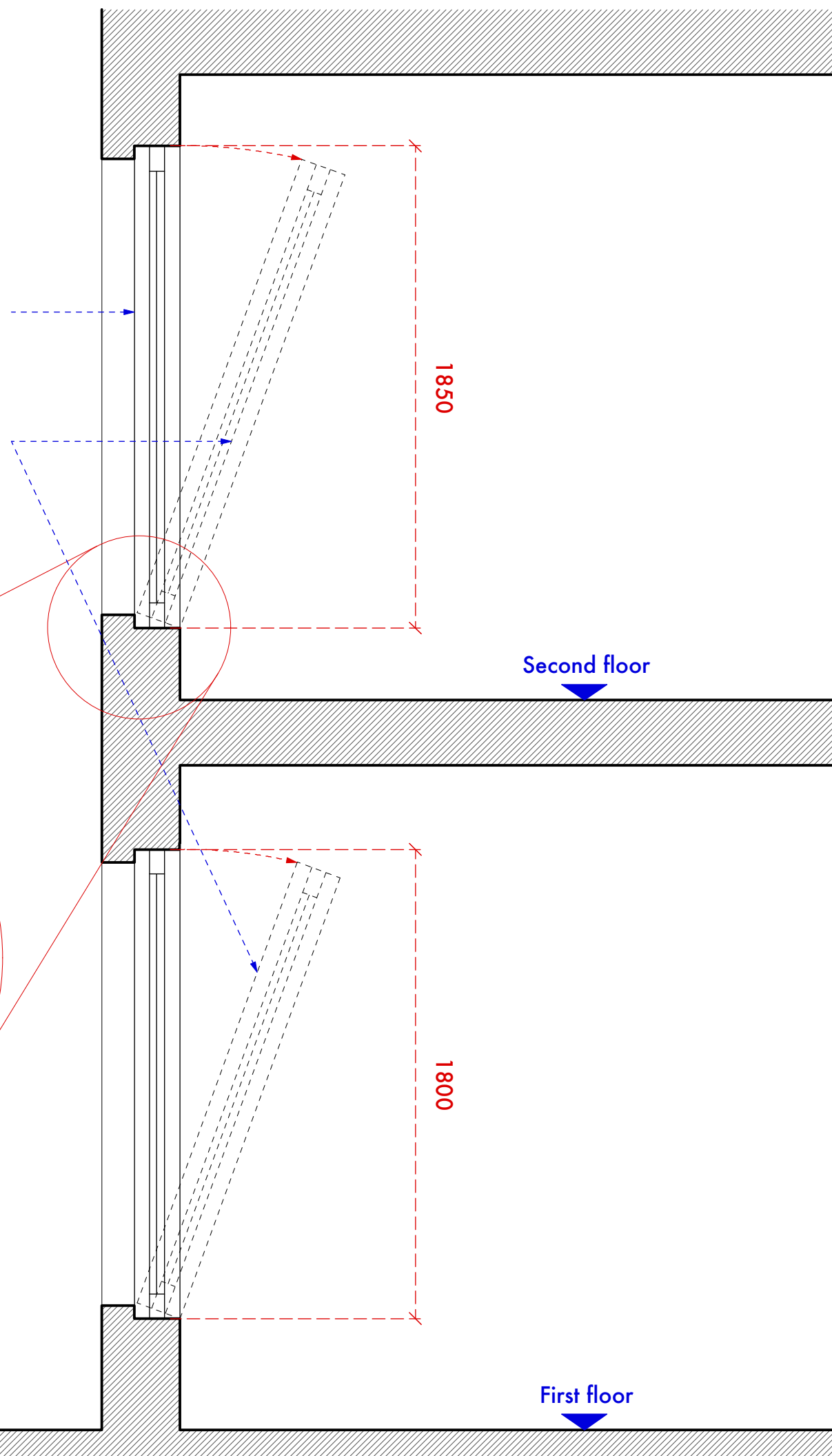


Windows recessed in opening as per previously approved drawings.

Proposed opening lights will be side hinged and also tilting as this allows good ventilation esp at night whilst maintaining security.



DETAIL
SCALE 1:20 @ A3

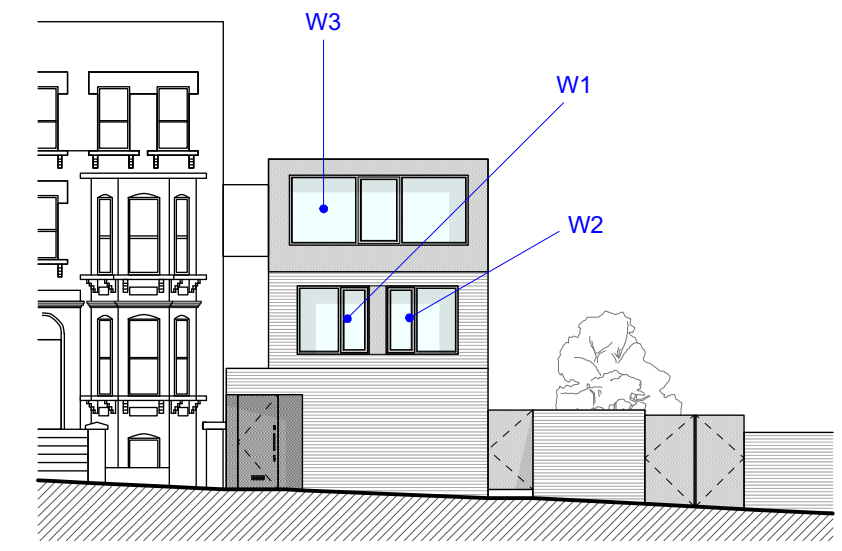
Access to terrace for maintenance only

MINOR AMENDMENTS TO FENESTRATION

It proved impossible to find a manufacturer for the previous design of windows where the entire window was a single opening light. It was also advised that such a window would not achieve the required ventilation in the bedrooms and would not meet the U-Value requirements.

As such minor amendments to the fenestration are proposed to achieve both the ventilation requirement and thermal performance.

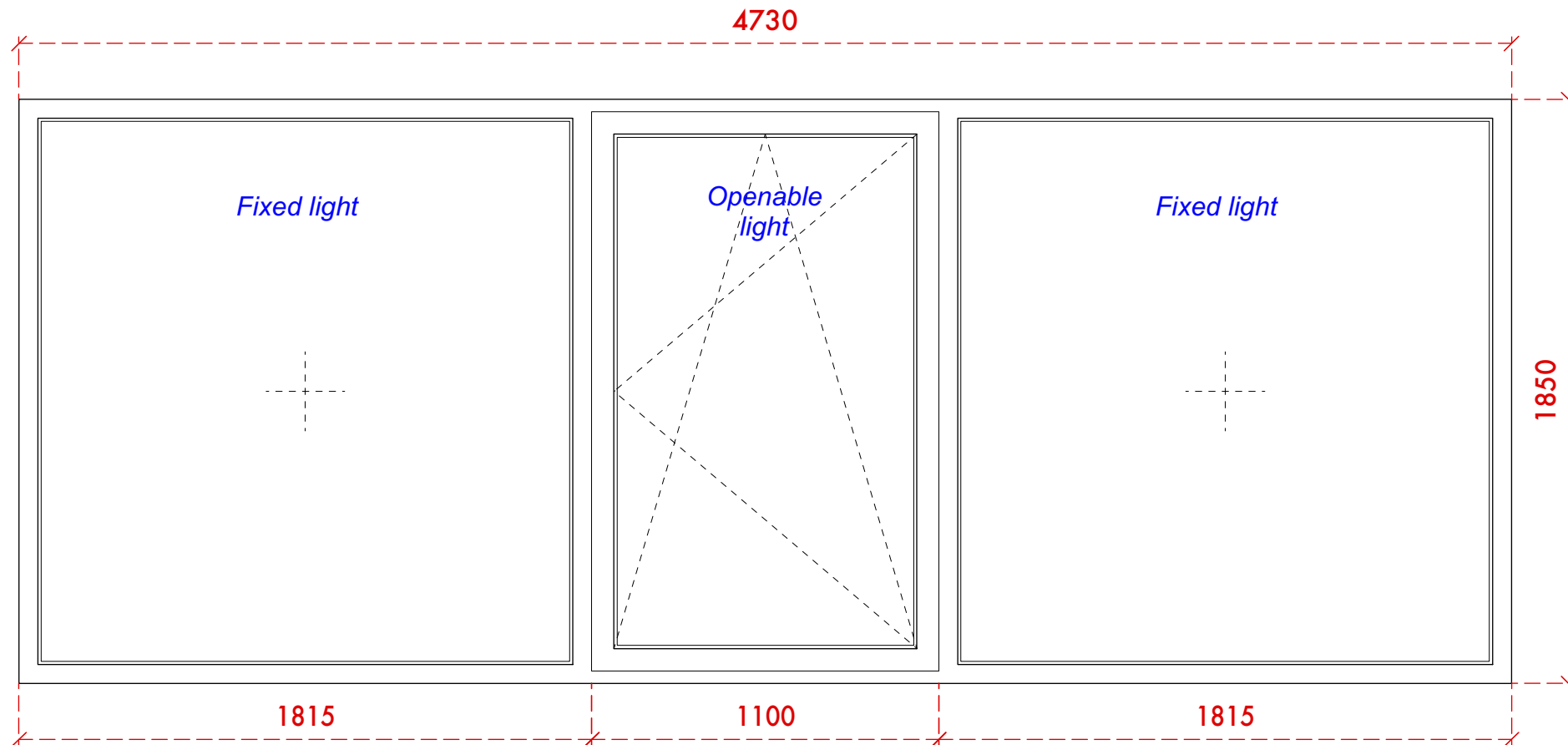
An openable light is introduced into each window. It would be both hinged and tilt opening to achieve good ventilation and has been designed to balance the elevation - see below and drawing 7155-05 Rev B.



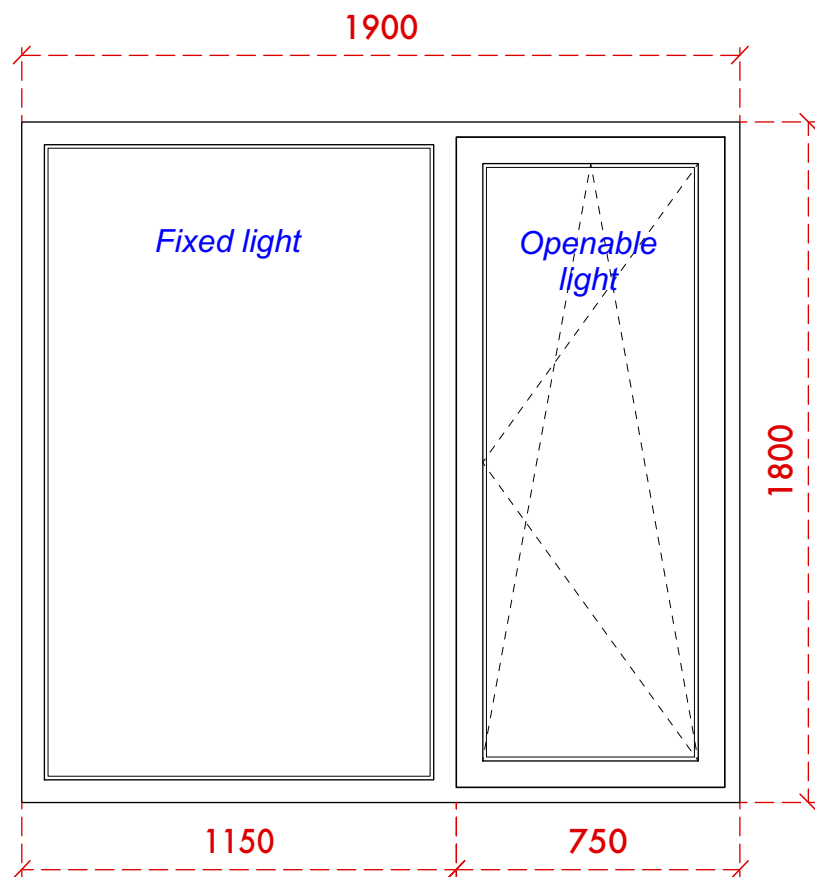
Elevation to show amended fenestration

Scale 1:200 @ A3

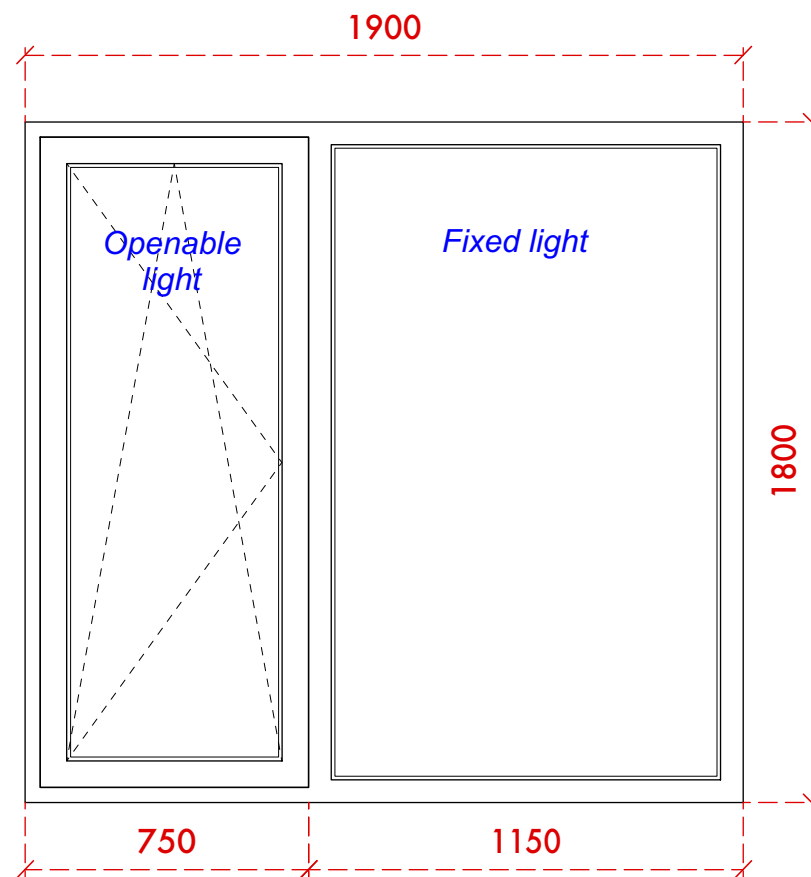
<small>DO NOT SCALE THIS DRAWING WRITTEN DIMENSIONS ONLY TO BE USED ALL DIMENSIONS ARE IN MILLIMETRES ALL DIMENSIONS TO BE VERIFIED ON SITE ANY INCONSISTENCIES TO BE REPORTED TO THE ARCHITECT IMMEDIATELY</small>	Job No 7155 FOR CONSTRUCTION	p-ad 192D Campden Hill Road, Notting Hill Gate, London, W8 7TH <small>t: 0208-4590172 e: info@p-ad.com</small>		
	87-93 Kingsgate Road, London, NW6 4LA	Title TYPICAL WINDOW DETAILS		Number 7155/ 2.3
	Drawn by SG	Scale 1:20 @ A3		



WINDOW W3



WINDOW W1



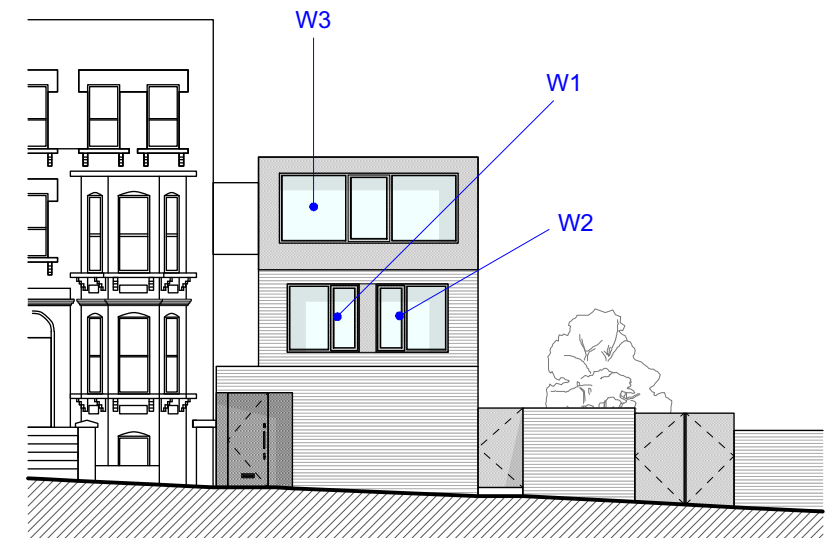
WINDOW W2

MINOR AMENDMENTS TO FENESTRATION

It proved impossible to find a manufacturer for the previous design of windows where the entire window was a single opening light. It was also advised that such a window would not achieve the required ventilation in the bedrooms and would not meet the U-Value requirements.

As such minor amendments to the fenestration are proposed to achieve both the ventilation requirement and thermal performance.

An openable light is introduced into each window. It would be both hinged and tilt opening to achieve good ventilation and has been designed to balance the elevation - see below and drawing 7155-05 Rev B.



Elevation to show amended fenestration

Scale 1:200 @ A3

DO NOT SCALE THIS DRAWING WRITTEN DIMENSIONS ONLY TO BE USED ALL DIMENSIONS ARE IN MILLIMETRES ALL DIMENSIONS TO BE VERIFIED ON SITE ANY INCONSISTENCIES TO BE REPORTED TO THE ARCHITECT IMMEDIATELY	Job No 7155	p-ad 192D Campden Hill Road, Notting Hill Gate, London, W8 7TH t: 0208 4590172 e: info@p-ad.co.uk	
	FOR CONSTRUCTION		
	87-93 Kingsgate Road, London, NW6 4LA	Title Scale Drawn by SG	TYPICAL WINDOW DETAILS Number 7155/ 2.4