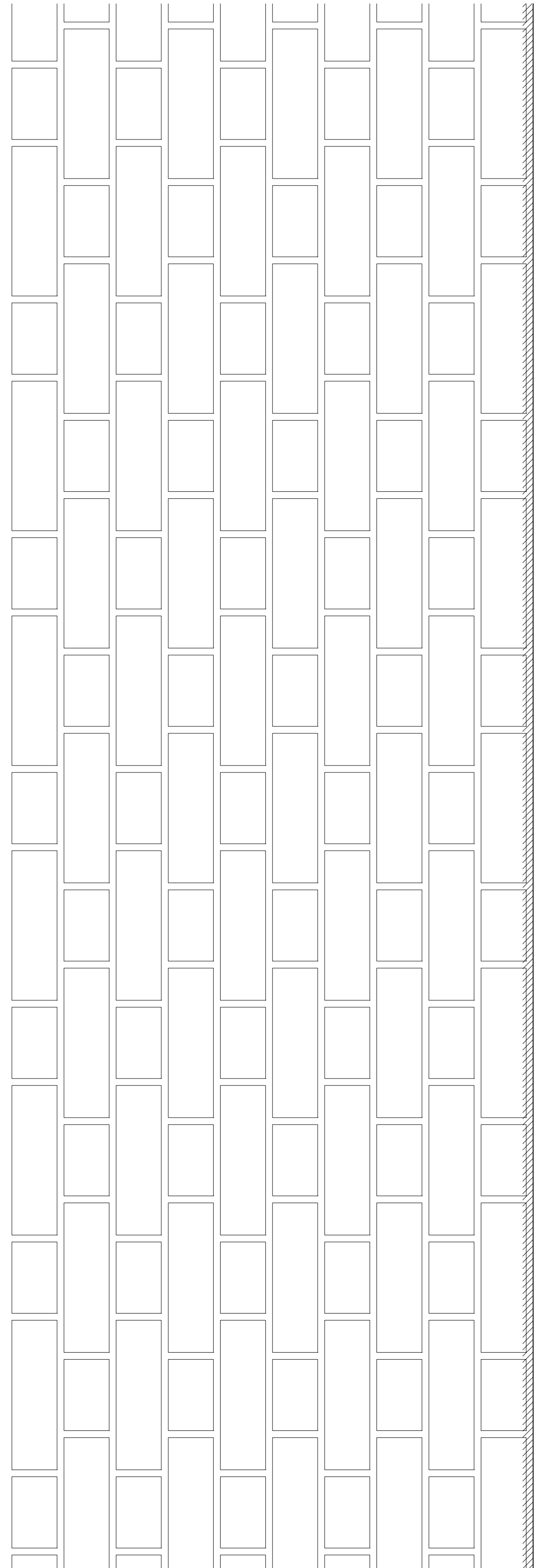
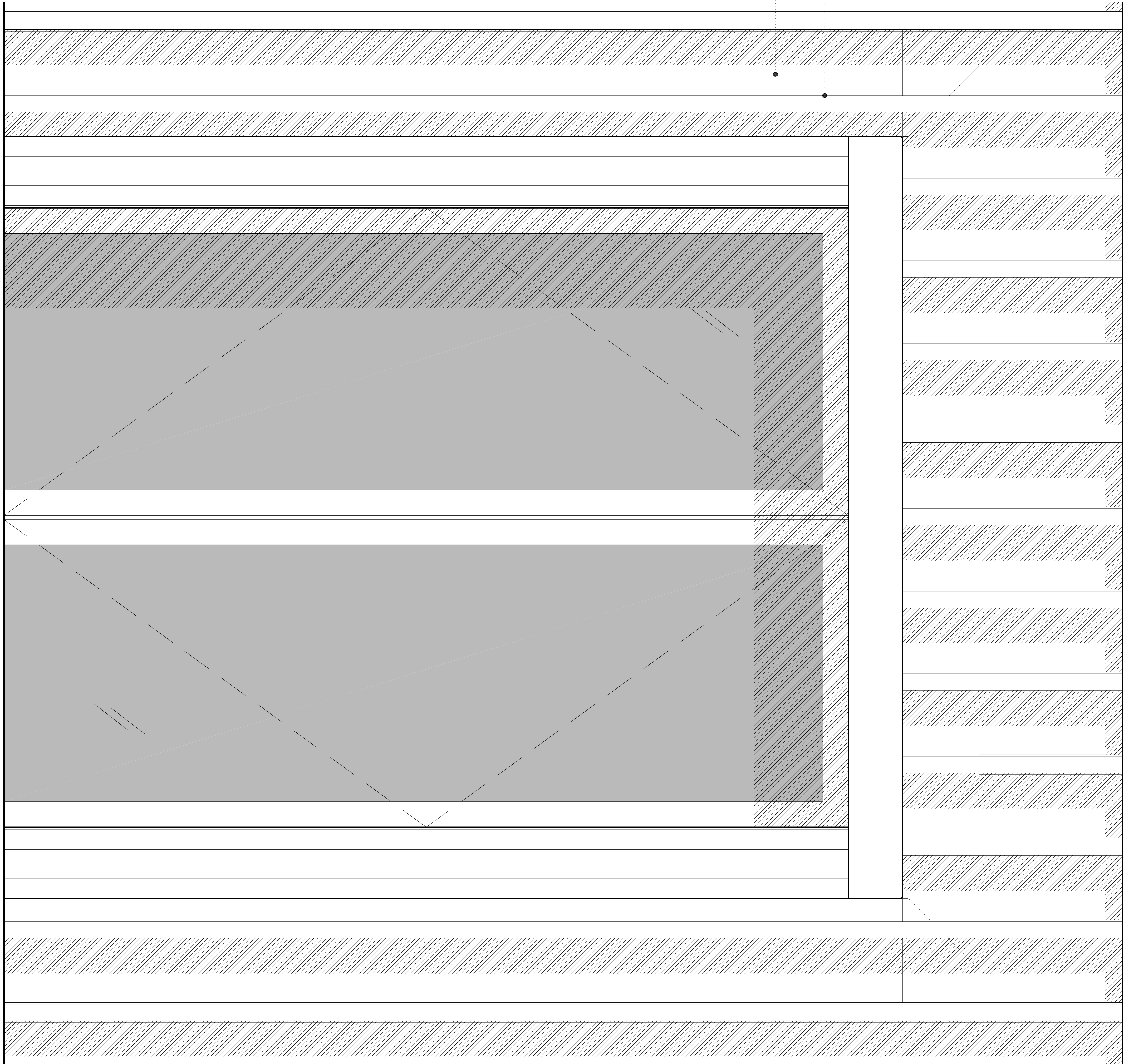


rev.	rev. date	rev. description

4 Apsall Street, London EC7R 1UD 1000 7713 7070 / 0200 7713 7071 / info@fasou.co.uk		
Project	Swain's Lane London	
Drawn by	N6 GDX	

Proposed Second Floor Timber
Fin Detail

Date	Drawn by	Rev.
March 2017	DP-119	/
Scale @ A3	1:5	1658



PART ELEVATION

SECTION DD

2 x LAYERS 25MM WBP PLYWOOD FIXED BACK TO
TIMBER PLYWEEF STRUCTURE.

WME - JETCU OMNI CORNER CORNING WITH UPSTAND
RETURN, INSTALLED BY SPECIALIST SUB CONTRACTOR.

PROPRIETARY METAL BRACKET WEAVER, AND
TIMBER BATTEN AND FIXED BACK TO RIV TO SUPPORT
TIMBER TRELLIS FRAME.

FOR ROOF BUILDUP, SEE DETAIL DD-08

400MM GRAVEL PERMETER WITH PERFORATED
ALUMINIUM TRIM EDGING TO ALLOW THE MOVEMENT
OF WATER FROM BROWN ROOF SYSTEM TO OUTLETS.

140MM WED INSULATION LAD FILL WITH FULL
BONDED, SELF ADHESIVE SINGLE RIV MEMBRANE.

140MM THICK CONCRETE SLAB ON COMBICOR
31/17.2 METAL DECK BY COMIS OR SIMILAR, REFER TO
31/17.2 DETAILS FOR UPTAKE INFORMATION.

150mm DED INSULATION STEEL AND REFER TO
VIBES OF STEEL BEAM TO SUPPORT METAL DECK SLAB.

75MM x 35MM KIN DIED OAK TIMBER TRELLIS
BATTENS, ALL IMPORTED TIMBER TO COMPLY WITH BS
EN 3502.

WME - JETCU OMNI CORNER CORNING OR SIMILAR,
INSTALLED BY SPECIALIST SUB CONTRACTOR.

PROPRIETARY WJ SUSPENDED CEILING TO BE LINED
WITH 2 LAYERS 12.5MM FIRELINE BOARD WITH 50MM
FIBREGLASS.

75MM x 35MM OAK TIMBER TRELLIS BATTENS, ALL
IMPORTED TIMBER TO COMPLY WITH BS EN 3502.

PRESPECIFIED STONE CORNING BY FINALS OR SIMILAR
APPROVED, MAX REFERENCE.

DPC BEDDED IN MORTAR WITH SILICONE FLOWING

BESPOKE STEEL PANTILES SUPPORTED ON REDBRICK
TO CONTAIN LIGHTWEIGHT BOUTGHTON EXTENSIVE
ROOF SOIL.

WME - JETCU OMNI CORNER CORNING OR SIMILAR,
INSTALLED BY SPECIALIST SUB CONTRACTOR.

STAINLESS STEEL TYPE 4 WALL TIES @ 450 C/C/S
VERTICALLY AND 900 C/C/S HORIZONTALY

MIN 150mm ROCK WOOL OR ROOF FINISH

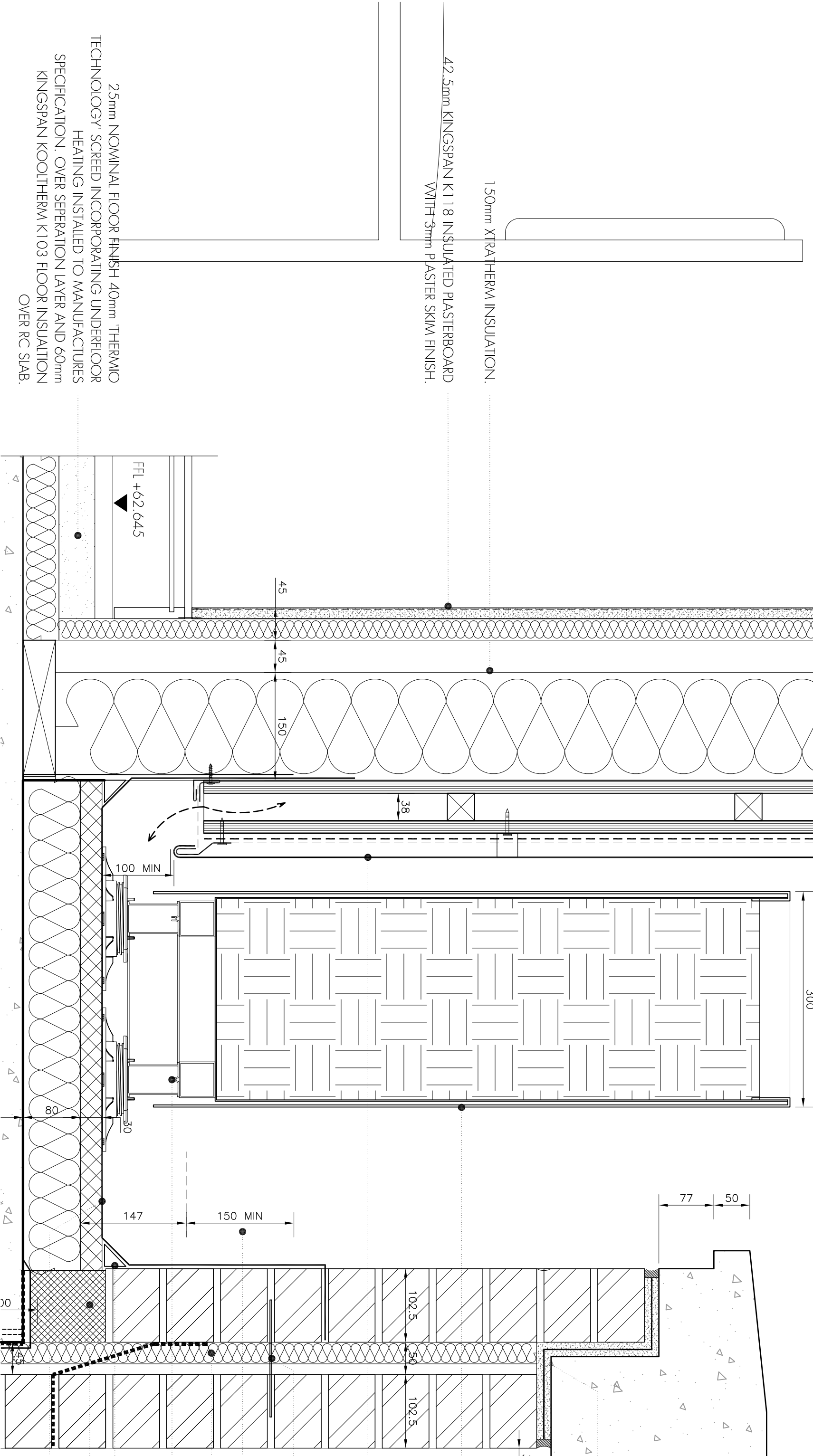
300mm KINGSPAN I-8 INSULATION.

ALUMINIUM FRAMES SUBSTITUTION FOR STEEL, REFER TO
RIND DETAIL, RIND DETAIL FOR REDBRICK AND GRAPES TO
SUPPORT.

ANGLED RILET

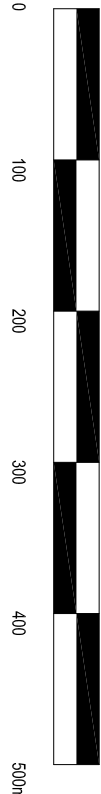
FOAMGLAS INSULATED BLOCKWORK LAD IN BED OF
MORTAR.

SINGLE RIV SELF ADHESIVE MEMBRANE ON
600mm MIN TO 140mm MAXI LAYERED INSULATION ON
600mm BED LAYER INSULATION.



DETAIL DD-19

SECTION DD



25mm NOMINAL FLOOR FINISH 40mm THERMO
TECHNOLOGY SCORED INCORPORATING UNDER FLOOR
STRUCTURAL INSULATION.

KINGSPAN KOOITHEB K103 FLOOR INSULATION
OVER MC SLAB.

150mm KRAUTHERM INSULATION,
42.5mm KINGSPAN K18 INSULATED PASTERBOARD
WITH 3mm PLASTER SKIM FINISH.

F11-42.5/44.5