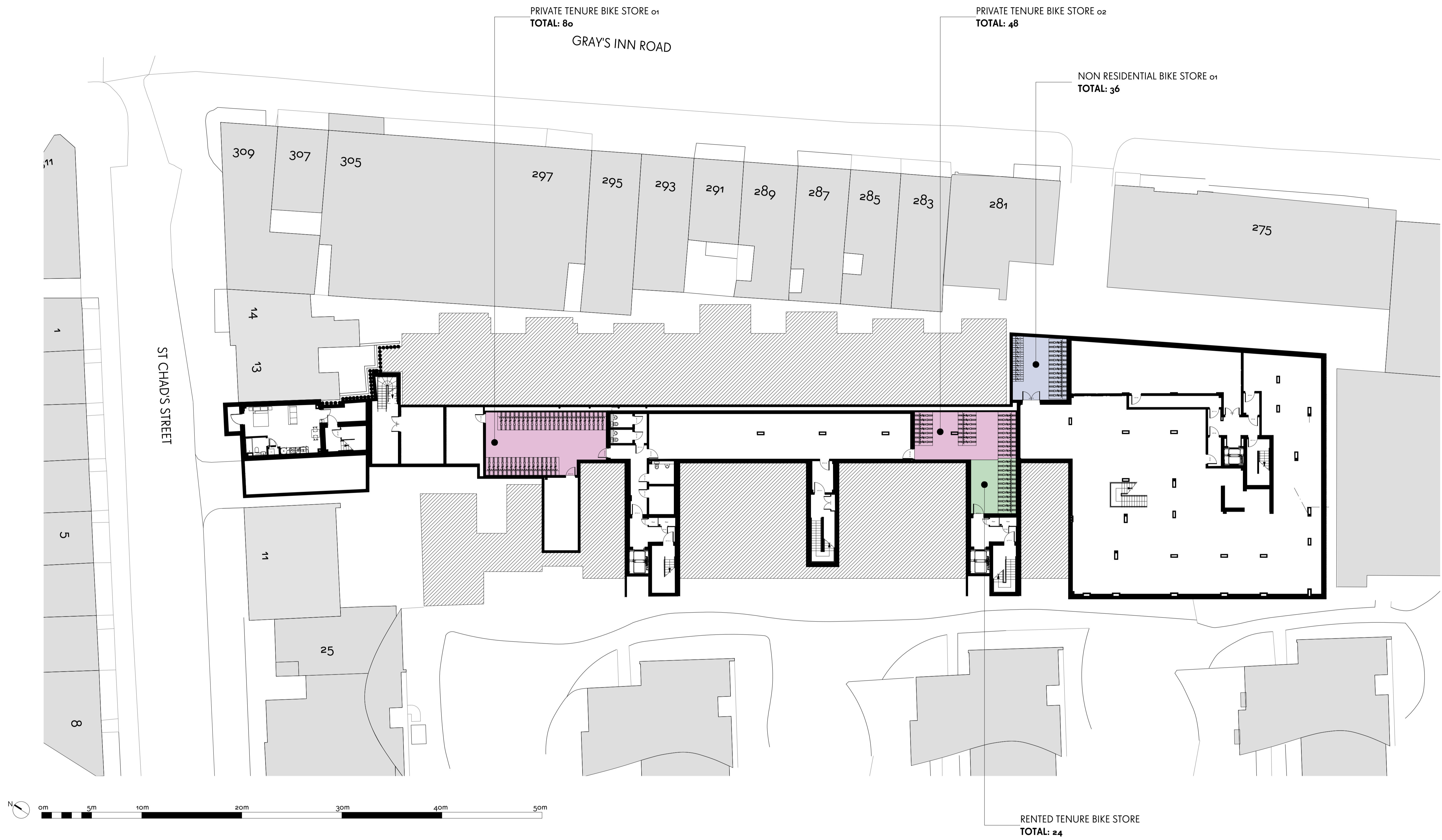

APPENDIX 12.0

IN RELATION TO DISCHARGE OF CONDITION 10 CYCLES



NOTES
This drawing is prepared for the purposes of a planning application and to show design intent only. The information contained herein must not be used for costing, construction, engineering or any other purposes without agreement in writing from Waugh Thistleton Architects Ltd.

- KEY:**
- Accomodation at half level above this plan
 - Private Tenure cycle storage
 - RSL cycle storage
 - Non-residential cycle storage
 - Visitor cycle storage

REV	NOTES	DATE	CHK
A	General Revisions incorporating design changes	12/12/16	
B	General Revisions	15/12/16	
C	General design coordination	3/3/17	
D	Further general design coordination	7/3/17	

**WAUGH
THISTLETON
ARCHITECTS**

77 LEONARD STREET LONDON EC2A 4QS
+44 (0) 2076135727 WAUGHTHISTLETON.COM

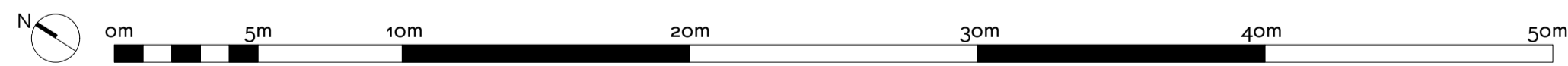
PLANNING

STATUS

Job 277A Gray's Inn Road
Title Cycle Storage Key Plan
 Basement Level
Date December 2016
Scale 1:200/400 @ A1/A3
Drawn JY






GRAY'S INN ROAD

ST CHAD'S STREET



This drawing is prepared for the purposes of a planning application and to show design intent only. The information contained herein must not be used for costing, construction, engineering or any other purposes without agreement in writing from Waugh Thistleton Architects Ltd.

NOTES

- KEY:**
-  Accomodation at half level above this plan
 -  Private Tenure cycle storage
 -  RSL cycle storage
 -  Non-residential cycle storage
 -  Visitor cycle storage

REV	NOTES	DATE	CHK
A	General Revisions incorporating design changes	12/12/16	
B	General design coordination	3/3/17	
C	Further general design coordination	7/3/17	

**WAUGH
THISTLETON
ARCHITECTS**

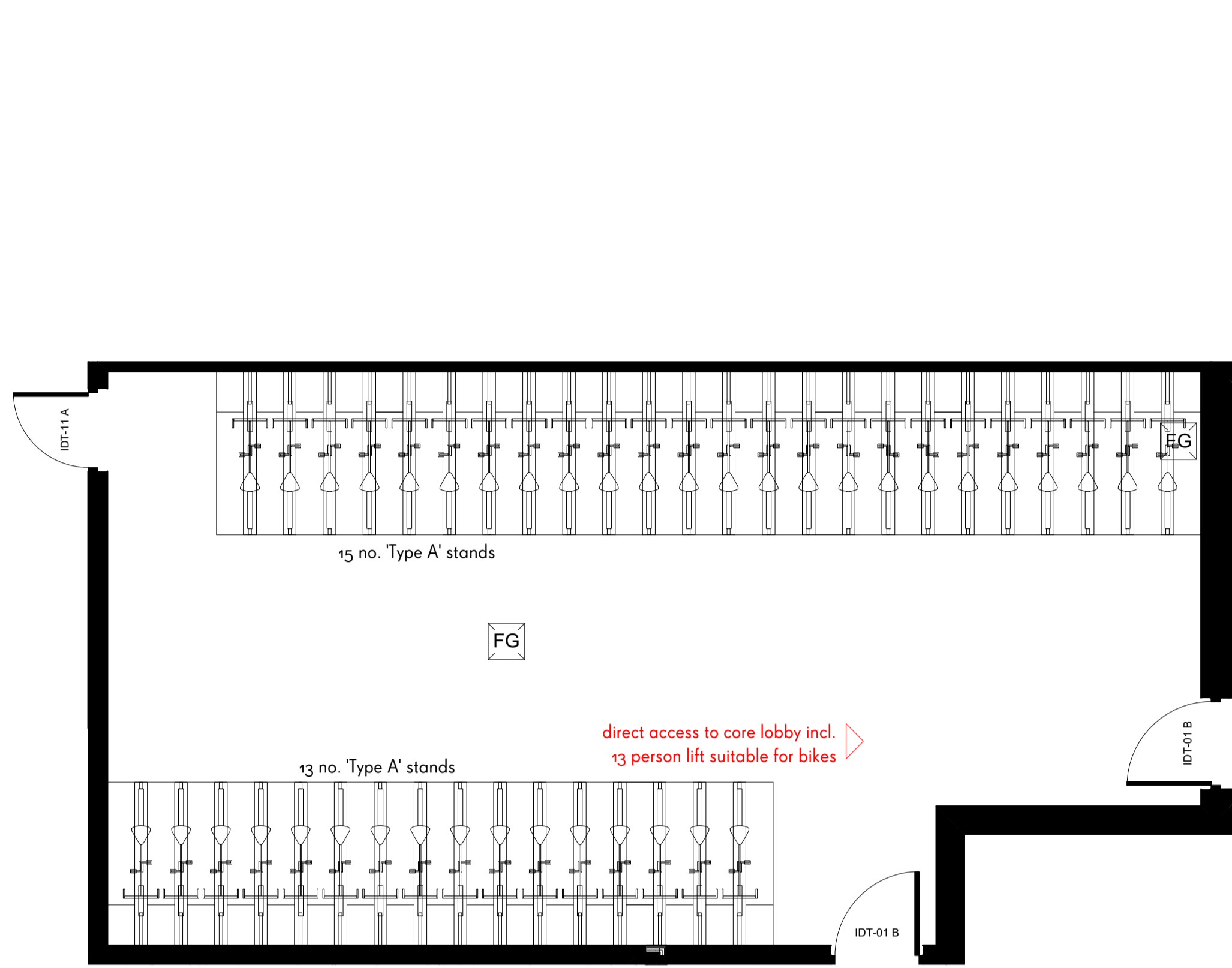
77 LEONARD STREET LONDON EC2A 4QS
+44 (0) 2076135727 WAUGHTHISTLETON.COM

STATUS

PLANNING

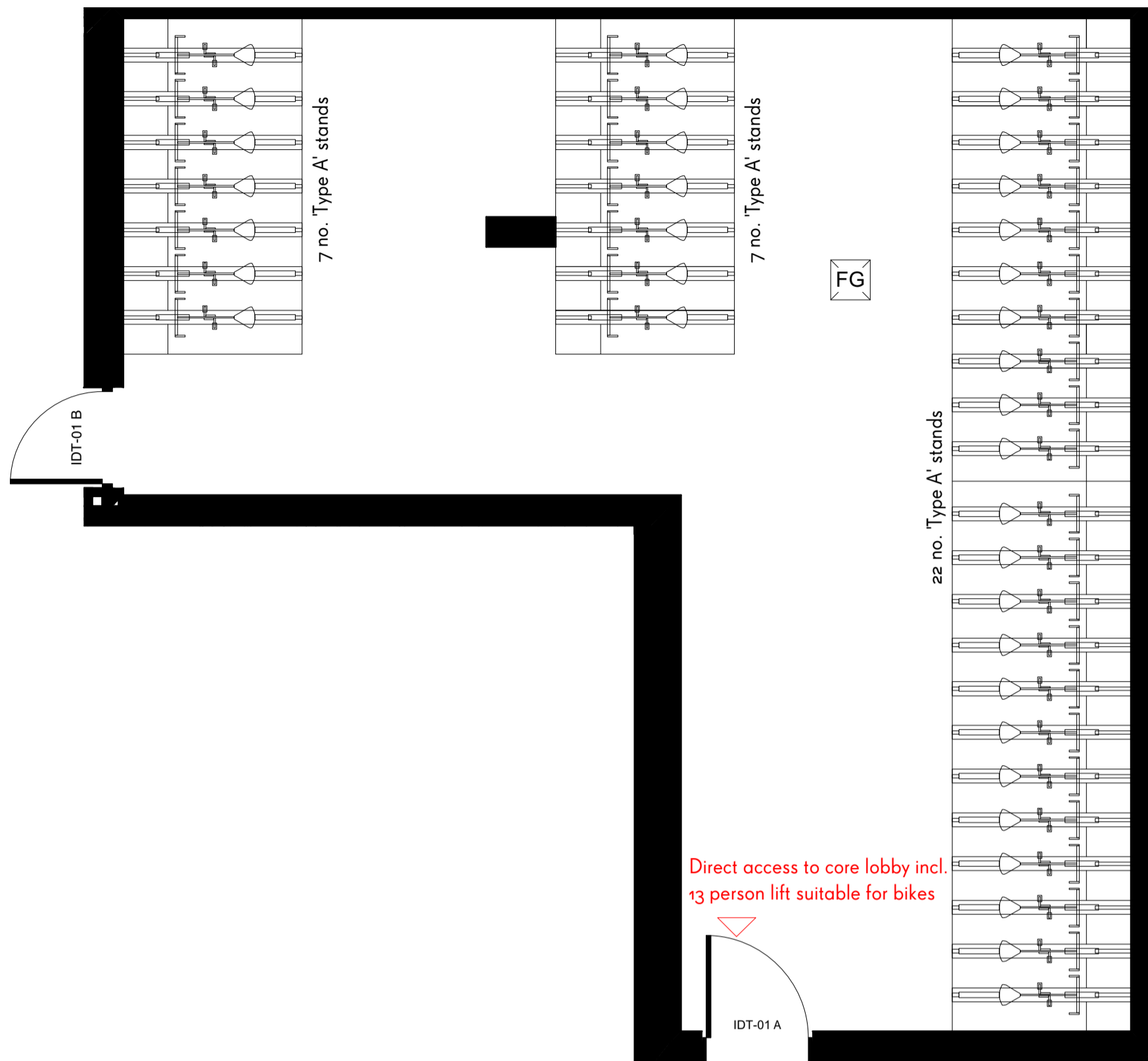
Job 277A Gray's Inn Road
Title Cycle Storage Key Plan
 Ground Floor
Date December 2016
Scale 1:200/400 @ A1/A3
Drawn JY

1_529-A-PL-121



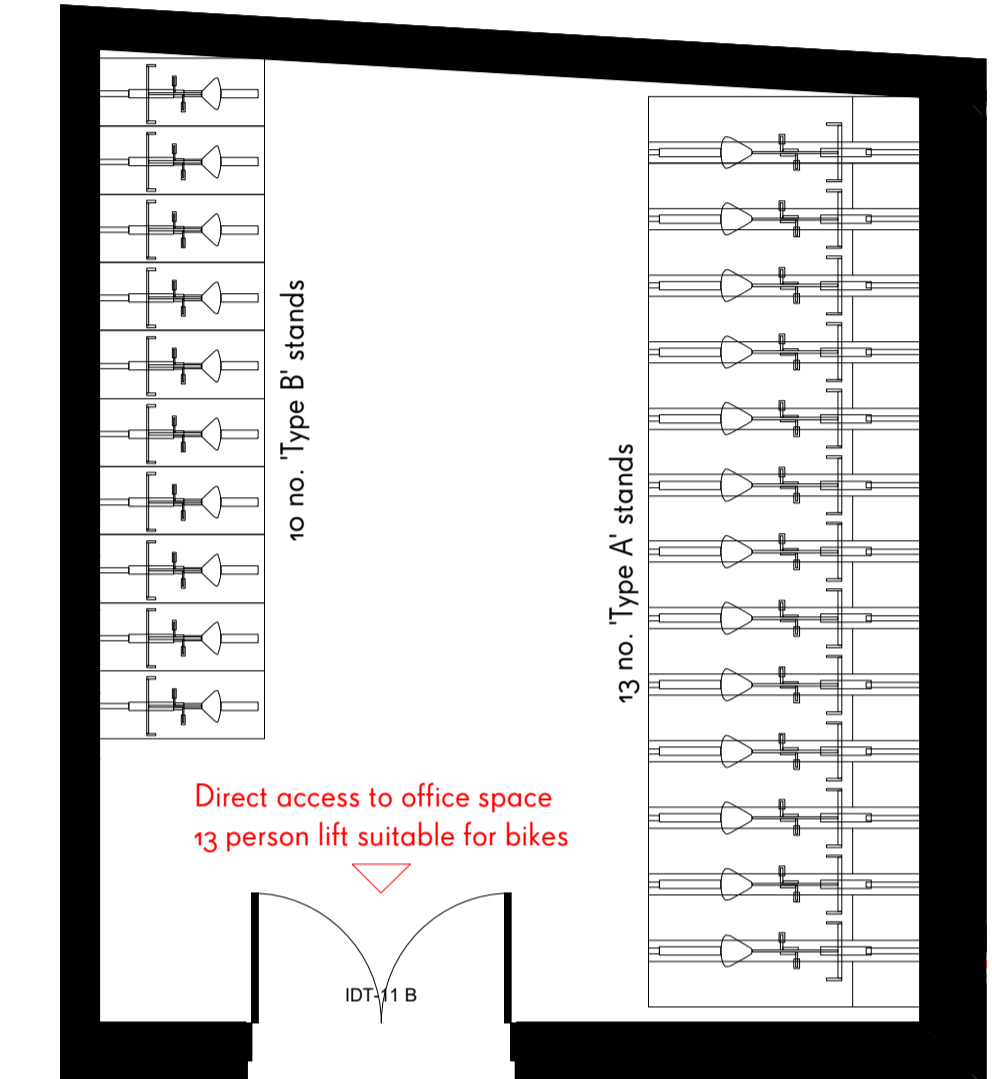
1
450

PROPOSED RESIDENTIAL BIKE STORE or
Basement Floor, Private Tenure
BIKE STORE NO. 1 TOTAL = 80



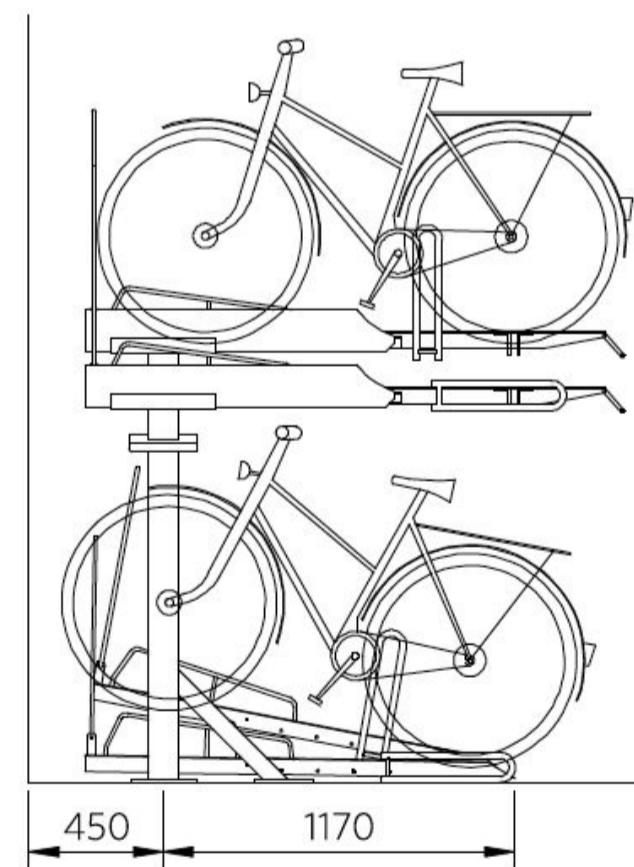
2
450

PROPOSED RESIDENTIAL BIKE STORE or
Basement Floor, Private and Affordable Tenure
BIKE STORE NO. 2 TOTAL = 72



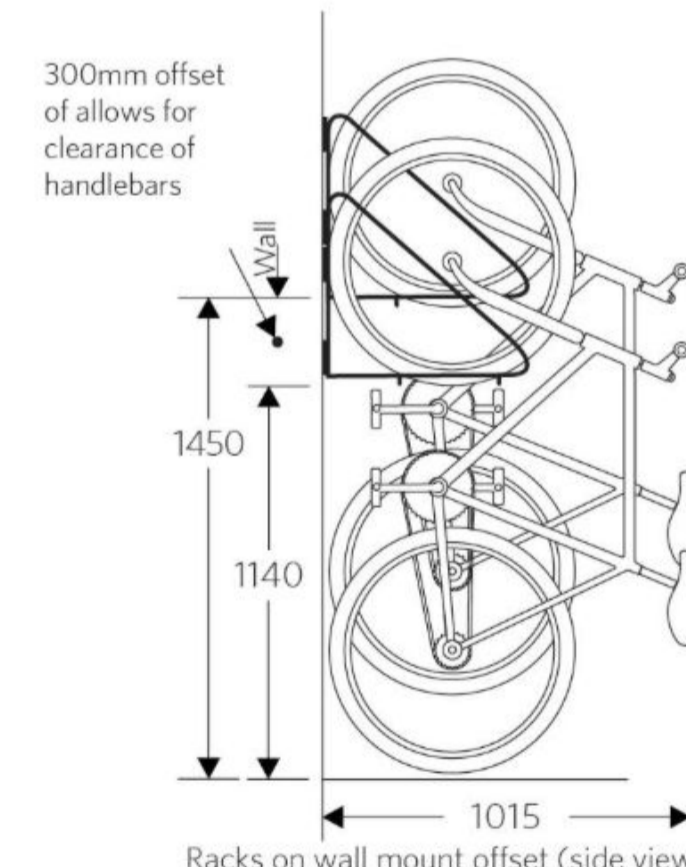
4
450

PROPOSED NON-RESIDENTIAL BIKE STORE or
Basement Floor, Non-Residential Use
NON-RESIDENTIAL BIKE STORE NO. 1 TOTAL = 36



5
450

CYCLE STAND TYPE A
'Josta' two tier cycle rack or similar.
Diagram not to scale. Spacing and ceiling heights provided as per
manufacturer's recommendations.



6
450

CYCLE STAND TYPE B
'Josta' wall hung cycle rack or similar
Diagram not to scale. Spacing and ceiling heights provided as per
manufacturer's recommendations.

This drawing is prepared for the purposes of a planning application and to show design intent only. The information contained herein must not be used for costing, construction, engineering or any other purposes without agreement in writing from Waugh Thistleton Architects Ltd.

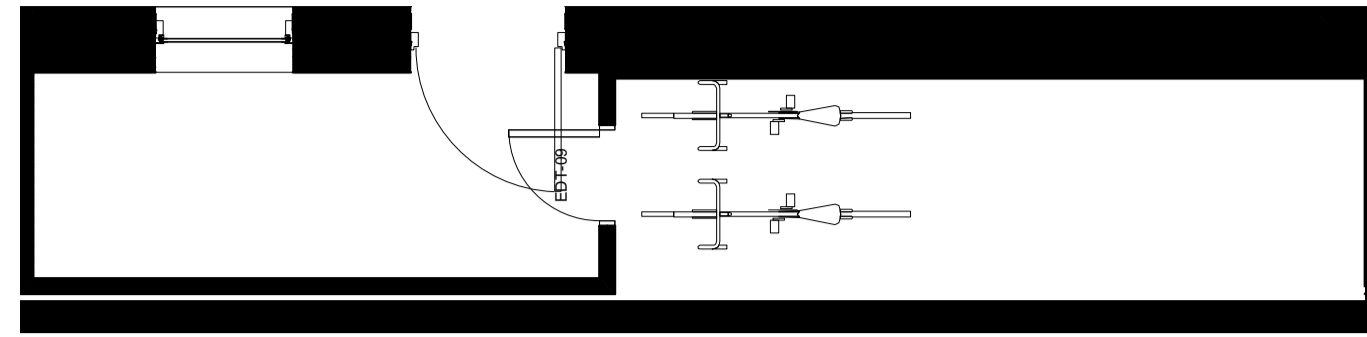
NOTES

REV	NOTES	DATE	CHK
A	General revisions incorporating design changes	12/12/16	
B	General Revisions	15/12/16	
C	General design coordination	3/3/17	

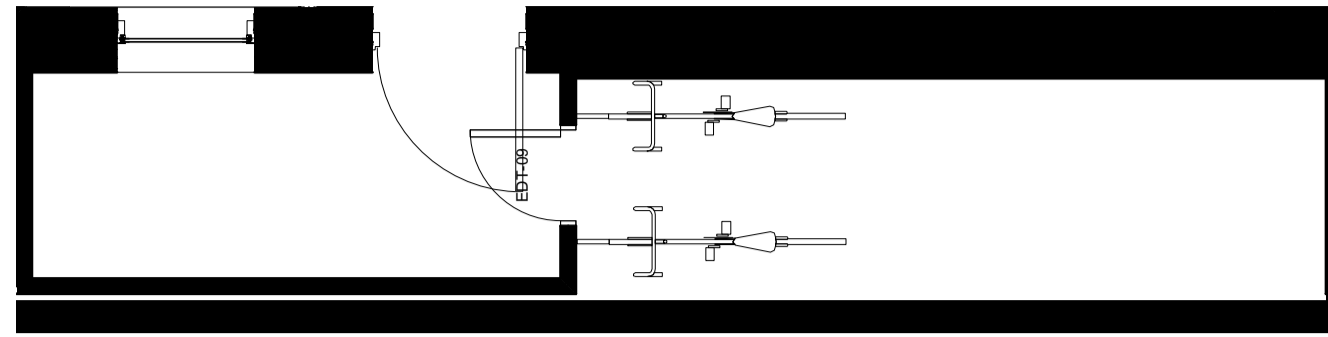
**WAUGH
THISTLETON
ARCHITECTS**
77 LEONARD STREET LONDON EC2A 4QS
+44 (0) 2076135727 WAUGHTHISTLETON.COM

STATUS	
PLANNING	
Job	Grays Inn Road Regal Homes
Title	Proposed Cycle Storage Sheet 01 of 02
Date	May 2015
Scale	1:50 @ A1
Drawn	DL

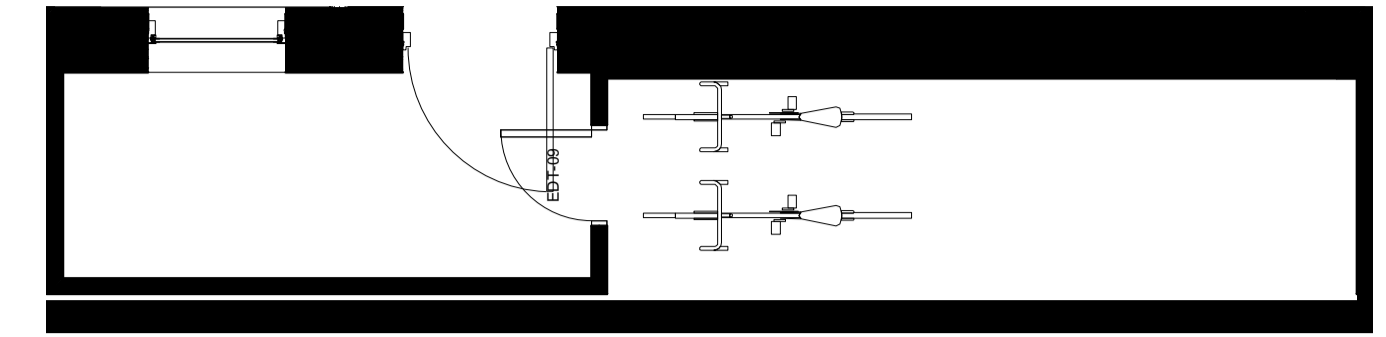
1_529-A-PL-450



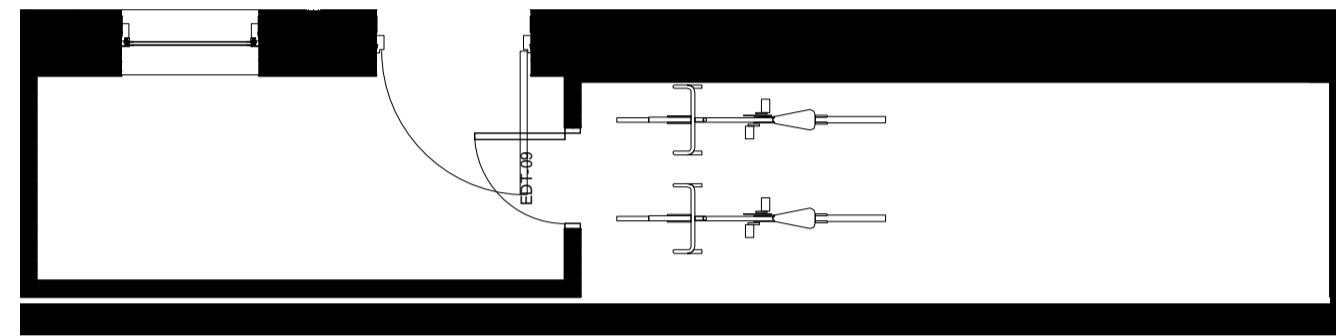
1
451 RESIDENTIAL BIKE STORAGE AREA - STORAGE TYPE C
Lower Ground, Townhouse no. 1.



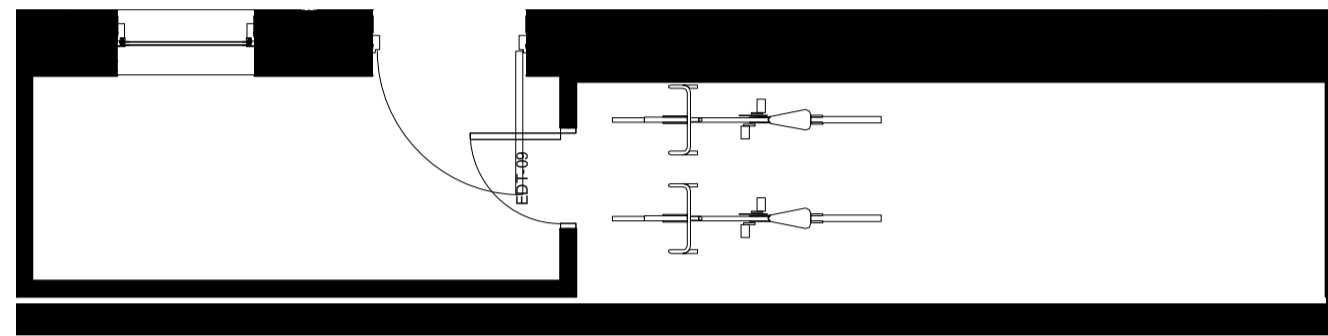
2
451 RESIDENTIAL BIKE STORAGE AREA - STORAGE TYPE C
Lower Ground, Townhouse no. 2.



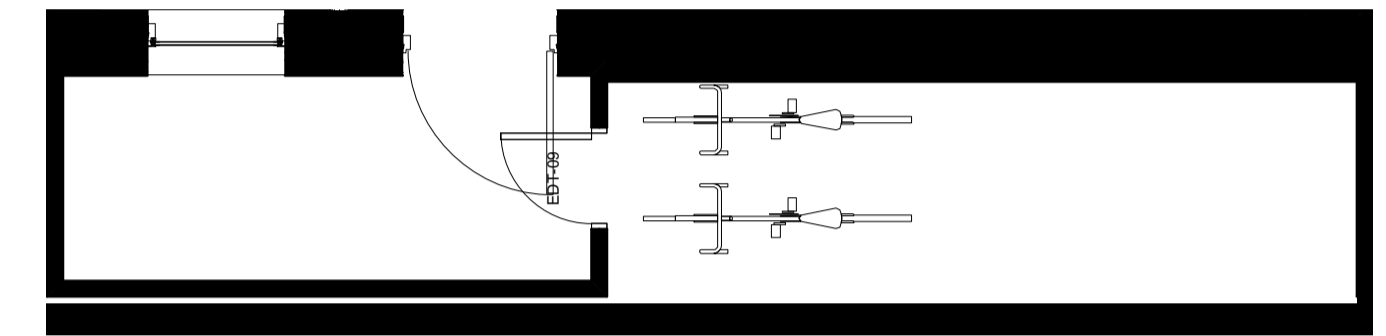
3
451 RESIDENTIAL BIKE STORAGE AREA - STORAGE TYPE C
Lower Ground, Townhouse no. 3.



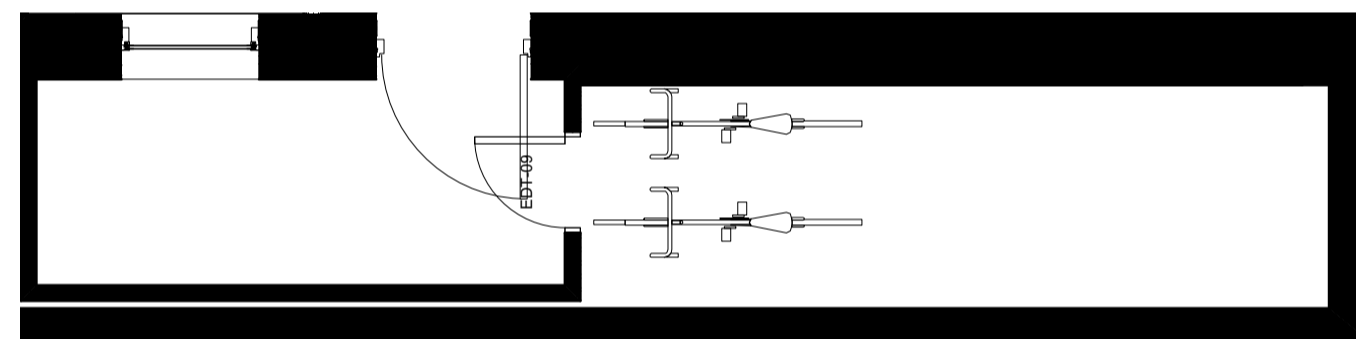
4
451 RESIDENTIAL BIKE STORAGE AREA - STORAGE TYPE C
Lower Ground, Townhouse no. 4.



5
451 RESIDENTIAL BIKE STORAGE AREA - STORAGE TYPE C
Lower Ground, Townhouse no. 5.



6
451 RESIDENTIAL BIKE STORAGE AREA - STORAGE TYPE C
Lower Ground, Townhouse no. 6.



7
451 RESIDENTIAL BIKE STORAGE AREA - STORAGE TYPE C
Lower Ground, Townhouse no. 7.

TOTAL CYCLE STORAGE	
Residential Bike Store no.1	= 80
Residential Bike Store no.2	= 72
Residential Bike Storage area (Townhouse)	= 14
Non-Residential Bike Store	= 36
OVERALL TOTAL	= 202

NB, additional sheffield stand parking will be provided in the landscape proposals for occasional visitors.

This drawing is prepared for the purposes of a planning application and to show design intent only. The information contained herein must not be used for costing, construction, engineering or any other purposes without agreement in writing from Waugh Thistleton Architects Ltd.

NOTES

REV	NOTES	DATE	CHK
A	Issued for Compliance Report	16/3/16	
B	General Revisions incorporating design changes	12/12/16	
C	General design coordination	3/3/17	

**WAUGH
THISTLETON
ARCHITECTS**

77 LEONARD STREET LONDON EC2A 4QS
+44 (0) 2076135727 WAUGHTHISTLETON.COM

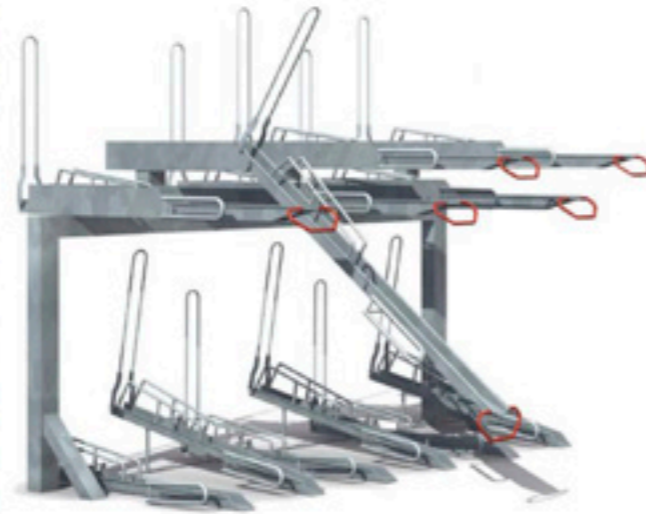
STATUS	
PLANNING	
Job	Grays Inn Road Regal Homes
Title	Proposed Cycle Storage Sheet 02 of 02
Date	May 2015
Scale	1:50 @ A1
Drawn	DL

1_529-A-PL-451



cycle-works

The Cycle Storage Specialists
cycle-works.com • 02392 815 555



Product Specification

Josta 2-tier High Capacity Rack

Description

The 2-tier racks are designed to get the maximum number of bikes into a limited space, in a safe, easy to use way. There are many unique features of the Josta racks, including the low, easy to use handles, the clever, patented way the bikes are held on the racks, and the general ease of use. They are also designed for a long, tough life of constant heavy use, with low maintenance. However, the most important factor is always Safety, and the Josta racks are very safe to use. This is a particularly important feature for heavy bikes.

Features

- Double the capacity of bicycle storage spaces
- Easy and safe to use
- Space efficient
- Flexible and adaptable
- Neat and organised
- Individual racking - one bike per space
- Low maintenance
- Patented gripping system holds bike securely
- Maximises cycle parking spaces
- BREEAM compliant
- Framework can be coloured in any standard RAL colour

Construction

This Rack is made from pre-galvanised and mild steel, the framework can be powder-coated in any RAL colour.

Dimensions

- A minimum headroom of 2600mm is required for maximum capacity.
- 300mm to any adjoining side wall.
- Minimum of 400mm centres (450mm recommended).
- Allow 2000mm for the rack itself, plus a minimum of 1700mm in front for access.
- The racks can also be installed from a central spine. For this option, please leave 2000mm for access on both sides. The 2-sided unit is then 3100mm wide.
- Racks can also be installed at a 45 or 55 degree angle to minimise space.

Optional (EPOA)

- Duisburg legs (legs for concrete floor)
- Powder coated framework

Cycle-Works
8-9 Rodney Road
Portsmouth
Hampshire
PO4 8BF

t 02392 815 555
f 02392 815 544
e info@cycle-works.com
w cycle-works.com



Cycle-Works Ltd
Registered in England 3268339



cycle-works

The Cycle Storage Specialists
cycle-works.com • 02392 815 555

Product Gallery



Cycle-Works
8-9 Rodney Road
Portsmouth
Hampshire
PO4 8BF

t 02392 815 555
f 02392 815 544
e info@cycle-works.com
w cycle-works.com

Cycle-Works Ltd
Registered in England 3268339



Cycle-Works Ltd
Registered in England 3268339



www.cycle-works.com

Cycle-Works

Josta Wall Hook



Overview

This functional and well-designed wall mounted rack holds the bicycle securely in place, while the (optional) security bar provides an extra locking point for the bike frame.

The rack can be installed where space is at a premium or where it is impossible to mount a rack to the ground. The bicycle can be stored vertically or horizontally, depending on the height the rack is installed at. This results in neat and organised individual parking.

Features & Benefits

- Small footprint.
- Can store the bicycle vertically or horizontally.
- Neat and organised individual parking.
- 90, 60, 45 and 30 degree angles available.
- The bike is stable while it is being locked.
- Security bar provides locking points for the bike frame



Cycle-Works Ltd
The Cycle Storage Specialists
cycle-works.com • 023 9281 5555



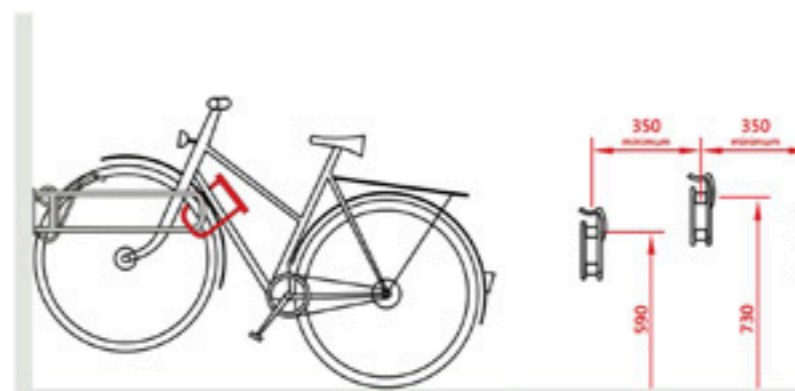
www.cycle-works.com

Josta Wall Hook

Hanging Positions

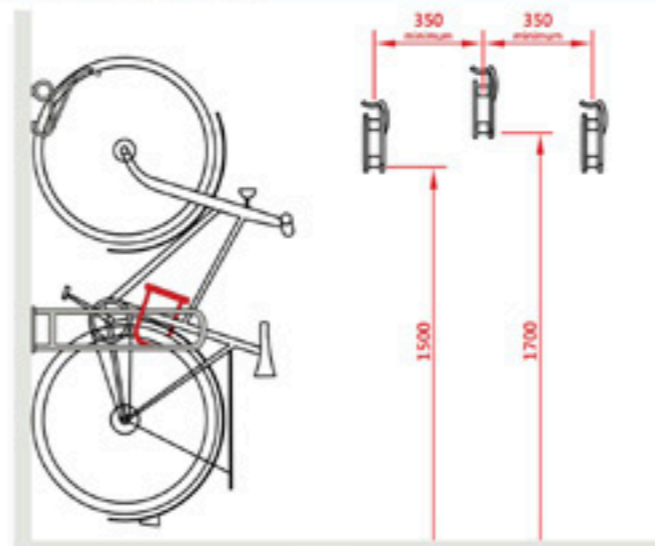
The Josta Wall Hook can be installed to park bikes in either a horizontal or vertical position. In both positions the racks should be vertically staggered to enable bicycles to be parked without handlebars or cables becoming entangled. The minimum recommended separation between hooks is 350mm, for a more comfortable operation 425mm is recommended.

Horizontal Parking



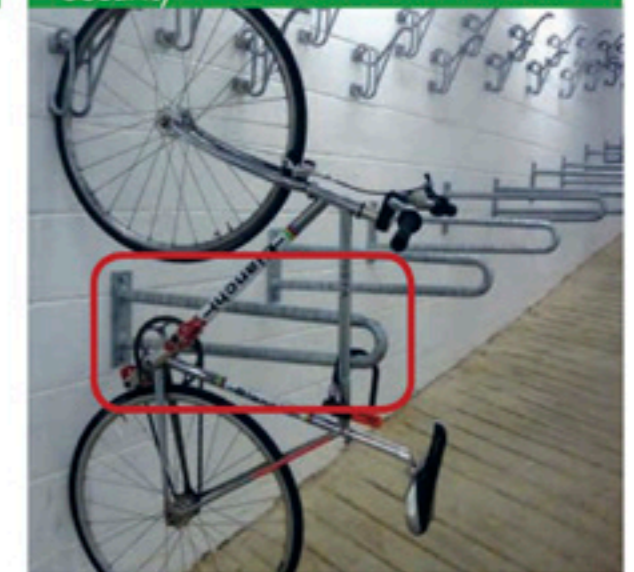
For horizontal parking hooks are installed alternately at heights of 590mm and 730mm above the ground. The locking bar, if used, integrates with the hook giving a locking point for the front wheel and the frame.

Vertical Parking



For vertical parking hooks are installed alternately at heights of 1500mm and 1700mm above the ground from the bottom of the Wall Hook fixing plate.

Security



The Josta Wall Hook can be supplied with an optional security bar to provide a secure locking point. This bar is installed using the same bolts as the hook or on the wall or ground between hooks. In the latter case one security bar can serve two hooks.



Cycle-Works Ltd
The Cycle Storage Specialists
cycle-works.com • 023 9281 5555