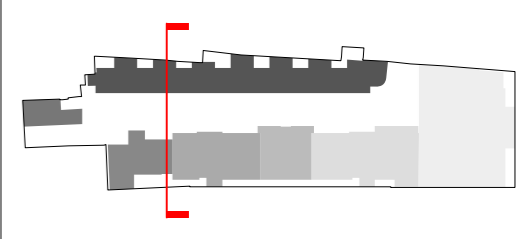
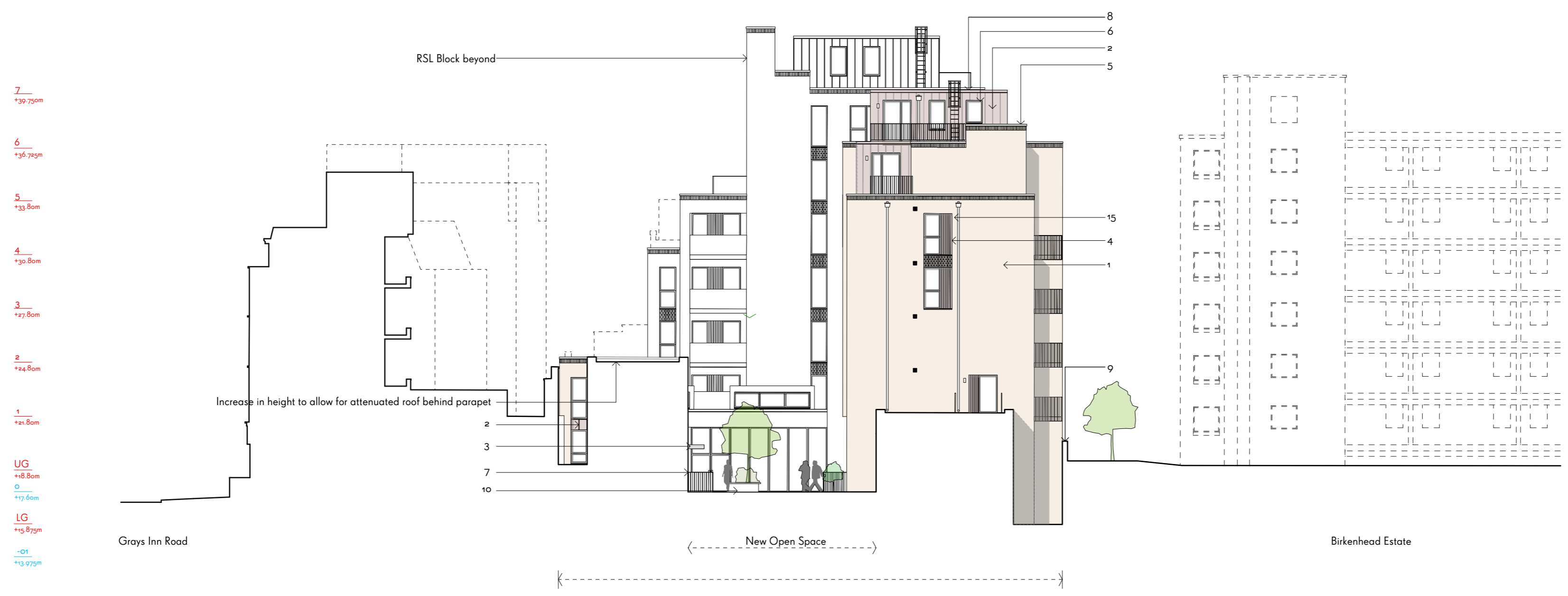

APPENDIX 9.0

This drawing is prepared for the purposes of a planning application and to show design intent only. The information contained herein must not be used for costing, construction, engineering or any other purposes without agreement in writing from Waugh Thistleton Architects Ltd.

NOTES

1. Ibstock Cooksbridge Yellow clamp stock brick, running bond with flush mortar joints, Euromix masonry mortar 'natural'
2. VM Zinc Pigmento standing seam cladding 'Autumn Red'
3. Fibre C Concrete canopy 'Sahara'
4. VM Zinc Pigmento standing seam cladding panel 'Autumn Red'
5. Woodside Portland Stone coping, grey
6. Composite Timber / Aluminium thermally broken double glazed windows and doors, Ral colour 8099
7. Powder coated steel balcony / balustrade, Ral colour 8099
8. Bio-Diverse green roof
9. Boundary wall, Ibstock Cooksbridge Yellow Brick, height varies
10. Raised planting beds
11. Private residential entrance door
12. Communal residential entrance
13. Commercial B+ entrance
14. Bin Store / Recycling louvered door, Ral 8099
15. Aluminium Rain Water Pipes, square profile, Ral 8099 to brick areas, Ral to match Zinc cladding in Zinc areas
16. External lighting to Entrance Doors / Amenity space



C	General revisions incorporating further coordination	27/2/17
B	Revised in line with design coordination	23/1/16
A	Heights Amended	16/02/15

REV	COMMENTS	DATE	CHK
-----	----------	------	-----

STATUS

PLANNING



Mixed stock facing brick - contrasting tones
Architect: PRP Architects

Deep brick reveals with aluminium windows & panels
Architect: Hawkins|Brown

Varying reveals to articulate forms and massing
Architect: Panter Hudspeth

Stepping & recessed massing
Architect: Allies and Morrison

Lightweight, complementary upper storeys
Architect: Duggan Morris

Job 277a Grays Inn Road

Title Proposed Section A
Sheet 1 of 10

Date October 2016

Scale 1:200 @ A2

Drawn JY

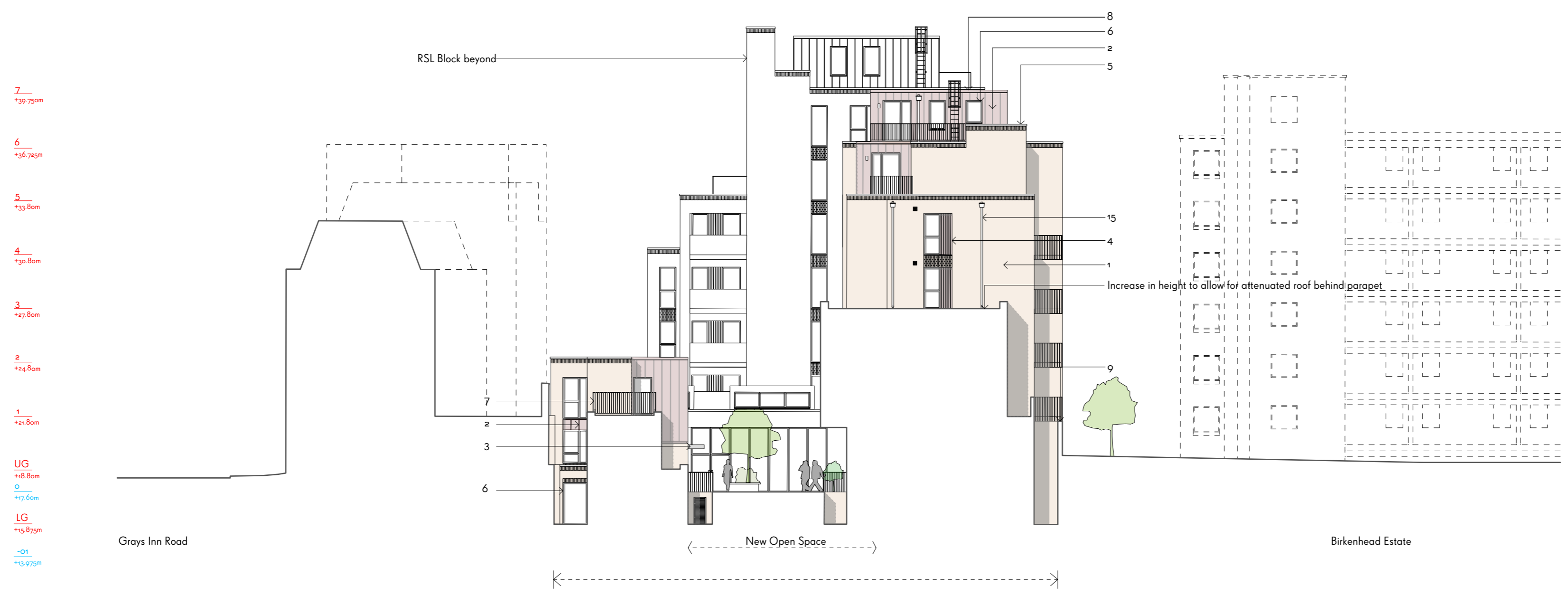
Client Regal Homes

126-1301

This drawing is prepared for the purposes of a planning application and to show design intent only. The information contained herein must not be used for costing, construction, engineering or any other purposes without agreement in writing from Waugh Thistleton Architects Ltd.

NOTES

1. Ibstock Cooksbridge Yellow clamp stock brick, running bond with flush mortar joints, Euromix masonry mortar 'natural'
2. VM Zinc Pigmento standing seam cladding 'Autumn Red'
3. Fibre C Concrete canopy 'Sahara'
4. VM Zinc Pigmento standing seam cladding panel 'Autumn Red'
5. Woodside Portland Stone coping, grey
6. Composite Timber / Aluminium thermally broken double glazed windows and doors, Ral colour 8099
7. Powder coated steel balcony / balustrade, Ral colour 8099
8. Bio-Diverse green roof
9. Boundary wall, Ibstock Cooksbridge Yellow Brick, height varies
10. Raised planting beds
11. Private residential entrance door
12. Communal residential entrance
13. Commercial B1 entrance
14. Bin Store / Recycling louvered door, Ral 8099
15. Aluminium Rain Water Pipes, square profile, Ral 8099 to brick areas, Ral to match Zinc cladding in Zinc areas
16. External lighting to Entrance Doors / Amenity space



C	General revisions incorporating further coordination	27/2/17	
B	Revised in line with design coordination	23/1/16	
A	Heights Amended	16/02/15	
REV	COMMENTS	DATE	CHK

STATUS

PLANNING



Mixed stock facing brick - contrasting tones
Architect: PRP Architects

Deep brick reveals with aluminium windows & panels
Architect: Hawkins Brown

Varying reveals to articulate forms and massing
Architect: Panter Hudspith

Stepping & recessed massing
Architect: Allies and Morrison

Lightweight, complementary upper storeys
Architect: Duggan Morris

Job 277a Grays Inn Road

Title Proposed Section B
Sheet 2 of 10

Date October 2016

Scale 1:200 @ A2

Drawn JY

Client Regal Homes

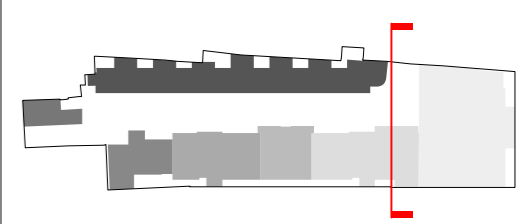
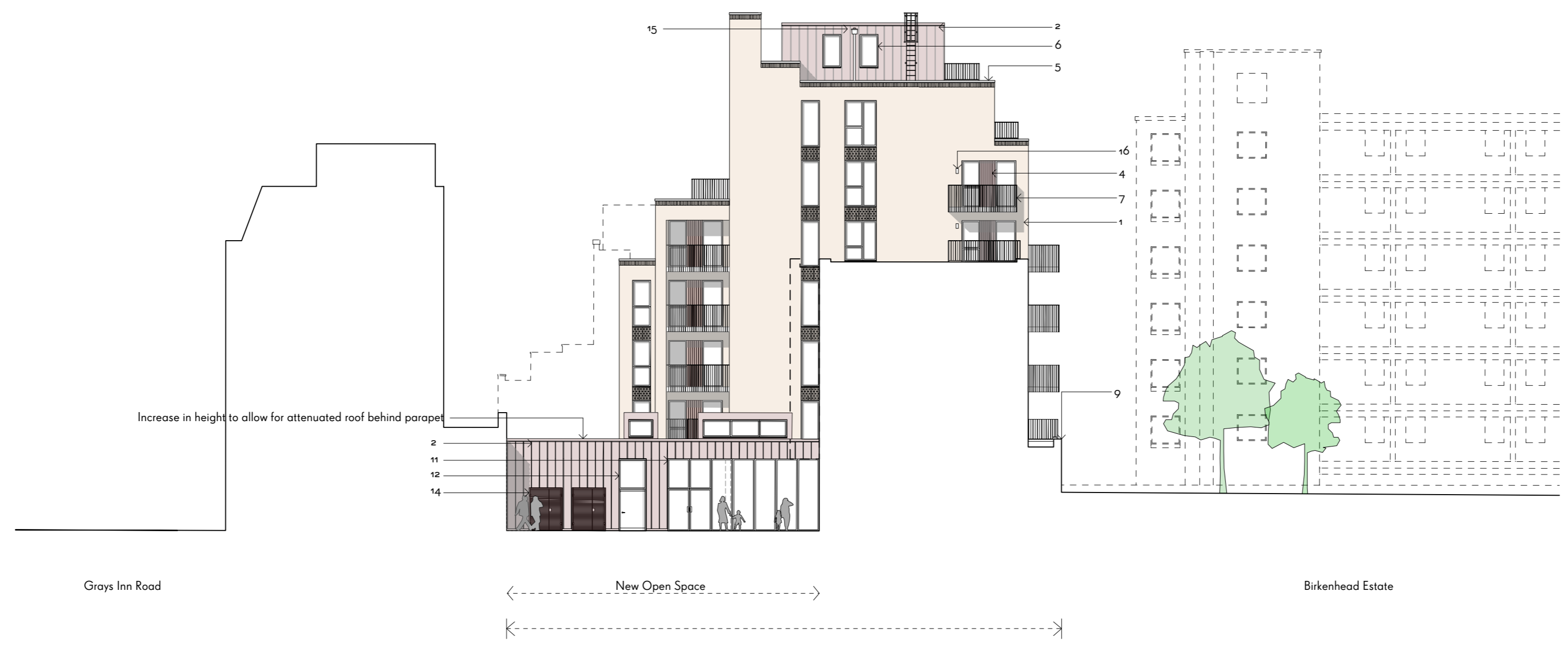
126-1302

This drawing is prepared for the purposes of a planning application and to show design intent only. The information contained herein must not be used for costing, construction, engineering or any other purposes without agreement in writing from Waugh Thistleton Architects Ltd.

NOTES

1. Ibstock Cooksbridge Yellow clamp stock brick, running bond with flush mortar joints, Euromix masonry mortar 'natural'
2. VM Zinc Pigmento standing seam cladding 'Autumn Red'
3. Fibre C Concrete canopy 'Sahara'
4. VM Zinc Pigmento standing seam cladding panel 'Autumn Red'
5. Woodside Portland Stone coping, grey
6. Composite Timber / Aluminium thermally broken double glazed windows and doors, Ral colour 809p
7. Powder coated steel balcony / balustrade, Ral colour 809p
8. Bio-Diverse green roof
9. Boundary wall, Ibstock Cooksbridge Yellow Brick, height varies
10. Raised planting beds
11. Private residential entrance door
12. Communal residential entrance
13. Commercial B1 entrance
14. Bin Store / Recycling louvered door, Ral 809p
15. Aluminium Rain Water Pipes, square profile, Ral 809p to brick areas, Ral to match Zinc cladding in Zinc areas
16. External lighting to Entrance Doors / Amenity space

- 7 +39.750m
- 6 +36.725m
- 5 +33.80m
- 4 +30.80m
- 3 +27.80m
- 2 +24.80m
- 1 +21.80m
- UG +18.80m
- 0 +17.60m
- LG +15.875m
- 01 +13.975m



C	General revisions incorporating further coordination	27/2/17	
B	Revised in line with design coordination	23/1/16	
A	Heights Amended	16/02/15	
REV	COMMENTS	DATE	CHK

STATUS

PLANNING

Job 277a Grays Inn Road
Title Proposed Section C
 Sheet 3 of 10
Date October 2016
Scale 1:200 @ A2
Drawn JY
Client Regal Homes

126-1303

WAUGH THISTLETON ARCHITECTS

77 LEONARD STREET LONDON EC2A 4QS
 +44(0) 207613527 WAUGHTHISTLETON.COM



Planting and seating to external open space



Glazed shopfront to cafe / gallery



Varying reveals to articulate forms and massing
 Architect: Panter Hudspeth

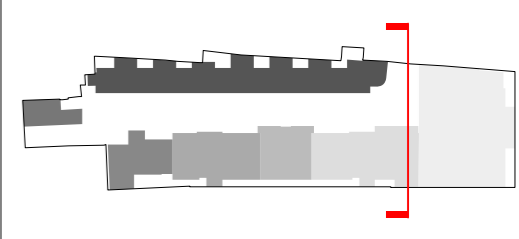
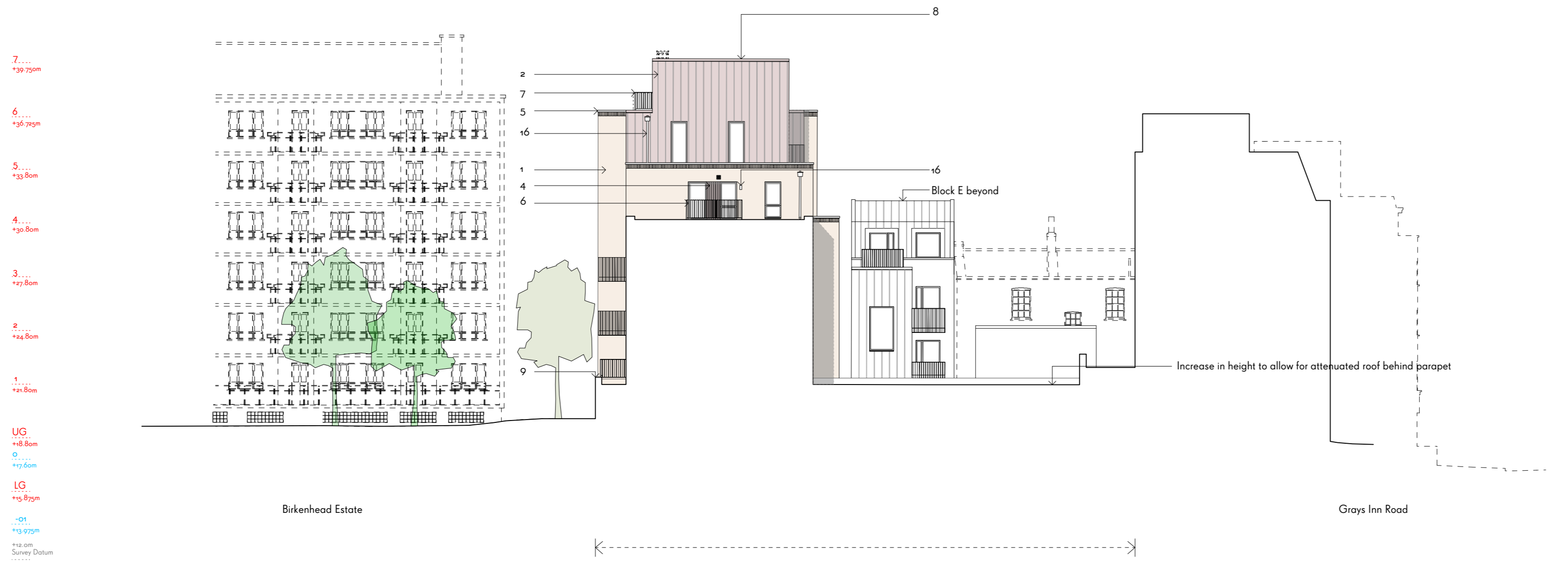


Stepping & recessed massing
 Architect: Allies and Morrison

This drawing is prepared for the purposes of a planning application and to show design intent only. The information contained herein must not be used for costing, construction, engineering or any other purposes without agreement in writing from Waugh Thistleton Architects Ltd.

NOTES

1. Ibstock Cooksbridge Yellow clamp stock brick, running bond with flush mortar joints, Euromix masonry mortar 'natural'
2. VM Zinc Pigmento standing seam cladding 'Autumn Red'
3. Fibre C Concrete canopy 'Sahara'
4. VM Zinc Pigmento standing seam cladding panel 'Autumn Red'
5. Woodside Portland Stone coping, grey
6. Composite Timber / Aluminium thermally broken double glazed windows and doors, Ral colour 8099
7. Powder coated steel balcony / balustrade, Ral colour 8099
8. Bio-Diverse green roof
9. Boundary wall, Ibstock Cooksbridge Yellow Brick, height varies
10. Raised planting beds
11. Private residential entrance door
12. Communal residential entrance
13. Commercial B+ entrance
14. Bin Store / Recycling louvered door, Ral 8099
15. Aluminium Rain Water Pipes, square profile, Ral 8099 to brick areas, Ral to match Zinc cladding in Zinc areas
16. External lighting to Entrance Doors / Amenity space



C	General revisions incorporating further coordination	27/2/17
B	Revised in line with design coordination	23/1/16
A	Heights Amended	16/02/15

REV	COMMENTS	DATE	CHK
-----	----------	------	-----

PLANNING

Job 277a Grays Inn Road

Title Proposed Section D
Sheet 4 of 10

Date October 2016

Scale 1:200 @ A2

Drawn JY

Client Regal Homes

126-1304



Private gardens to rear of ground floor dwellings
Architect: FCB Studios

Green roofs provide visual amenity to both neighbouring and new occupants
Architect: Hawkins/Brown

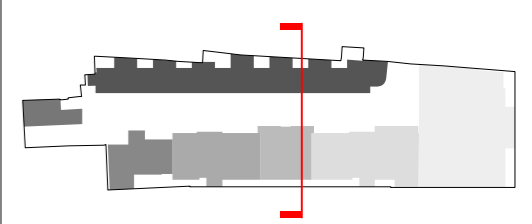
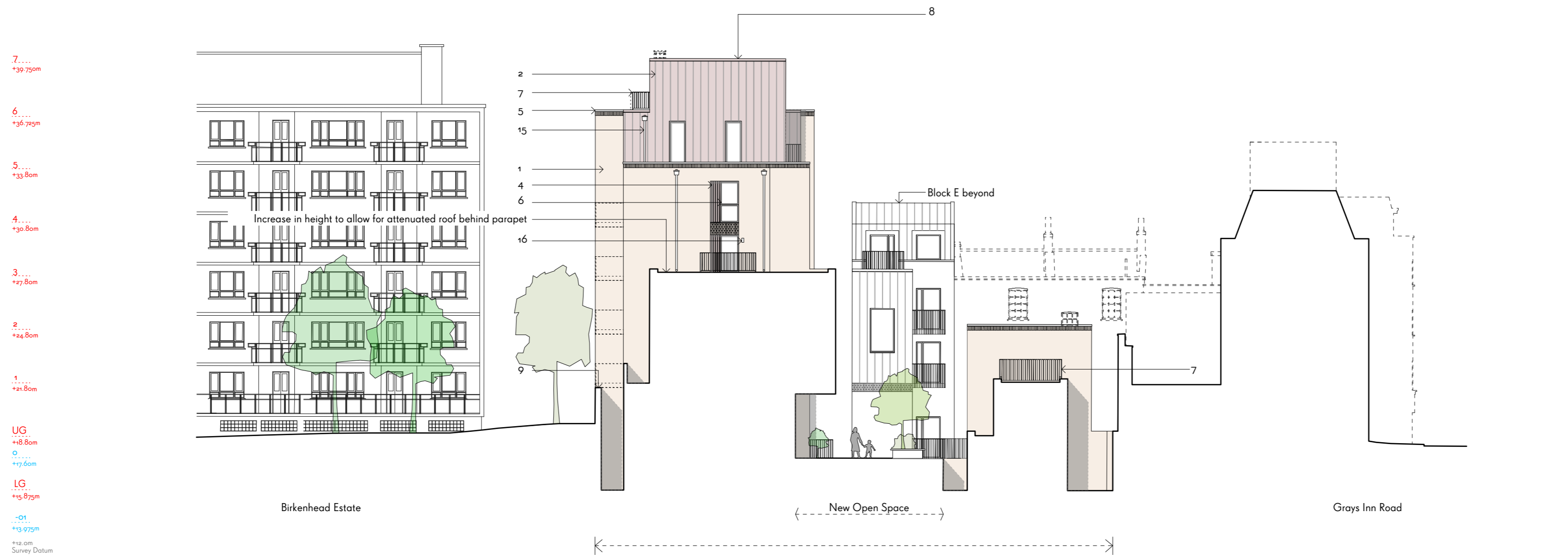
Lightweight, complementary upper storeys
Architect: Duggan Morris



This drawing is prepared for the purposes of a planning application and to show design intent only. The information contained herein must not be used for costing, construction, engineering or any other purposes without agreement in writing from Waugh Thistleton Architects Ltd.

NOTES

1. Ibstock Cooksbridge Yellow clamp stock brick, running bond with flush mortar joints, Euromix masonry mortar 'natural'
2. VM Zinc Pigmento standing seam cladding 'Autumn Red'
3. Fibre C Concrete canopy 'Sahara'
4. VM Zinc Pigmento standing seam cladding panel 'Autumn Red'
5. Woodside Portland Stone coping, grey
6. Composite Timber / Aluminium thermally broken double glazed windows and doors, Ral colour 8099
7. Powder coated steel balcony / balustrade, Ral colour 8099
8. Bio-Diverse green roof
9. Boundary wall, Ibstock Cooksbridge Yellow Brick, height varies
10. Raised planting beds
11. Private residential entrance door
12. Communal residential entrance
13. Commercial B1 entrance
14. Bin Store / Recycling louvered door, Ral 8099
15. Aluminium Rain Water Pipes, square profile, Ral 8099 to brick areas, Ral to match Zinc cladding in Zinc areas
16. External lighting to Entrance Doors / Amenity space



C	General revisions incorporating further coordination	27/2/17
B	Revised in line with design coordination	23/1/16
A	Heights Amended	16/02/15

REV	COMMENTS	DATE	CHK
-----	----------	------	-----

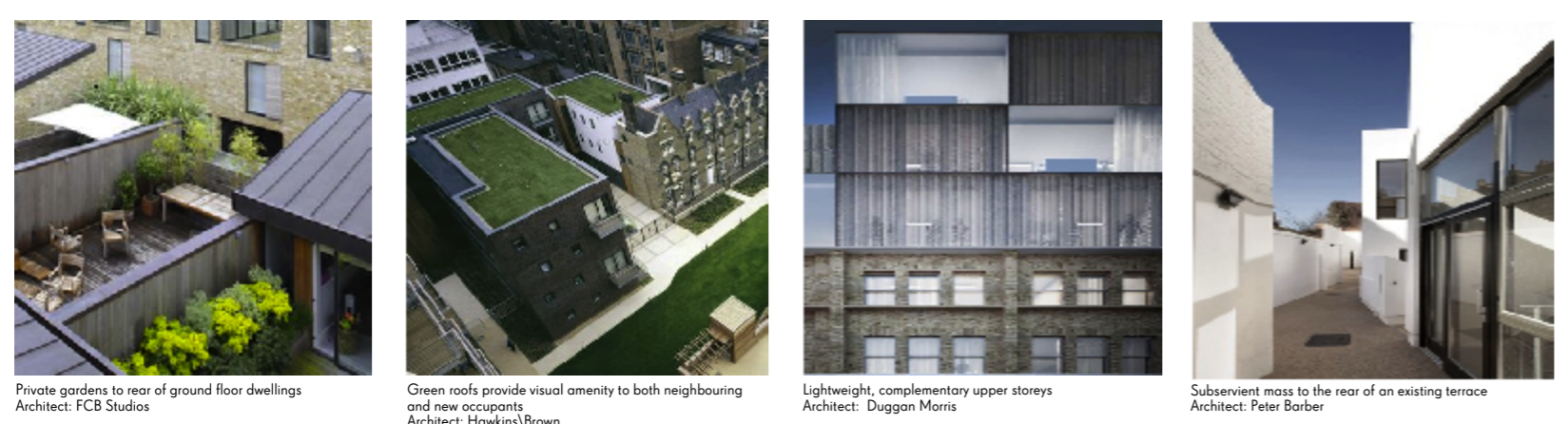
STATUS

PLANNING

Job 277a Grays Inn Road
Title Proposed Section E
 Sheet 5 of 10
Date October 2016
Scale 1:200 @ A2
Drawn JY
Client Regal Homes

126-1305

WAUGH THISTLETON ARCHITECTS
 77 LEONARD STREET LONDON EC2A 4QS
 +44(0) 2076135727 WAUGHTHISTLETON.COM



Private gardens to rear of ground floor dwellings
 Architect: FCB Studios
 Green roofs provide visual amenity to both neighbouring and new occupants
 Architect: Hawkins/Brown
 Lightweight, complementary upper storeys
 Architect: Duggan Morris
 Subservient mass to the rear of an existing terrace
 Architect: Peter Barber

This drawing is prepared for the purposes of a planning application and to show design intent only. The information contained herein must not be used for costing, construction, engineering or any other purposes without agreement in writing from Waugh Thistleton Architects Ltd.

NOTES

1. Ibstock Cooksbridge Yellow clamp stock brick, running bond with flush mortar joints, Euromix masonry mortar 'natural'
2. VM Zinc Pigmento standing seam cladding 'Autumn Red'
3. Fibre C Concrete canopy 'Sahara'
4. VM Zinc Pigmento standing seam cladding panel 'Autumn Red'
5. Woodside Portland Stone coping, grey
6. Composite Timber / Aluminium thermally broken double glazed windows and doors, Ral colour 809p
7. Powder coated steel balcony / balustrade, Ral colour 809p
8. Bio-Diverse green roof
9. Boundary wall, Ibstock Cooksbridge Yellow Brick, height varies
10. Raised planting beds
11. Private residential entrance door
12. Communal residential entrance
13. Commercial B+ entrance
14. Bin Store / Recycling louvered door, Ral 809p
15. Aluminium Rain Water Pipes, square profile, Ral 809p to brick areas, Ral to match Zinc cladding in Zinc areas
16. External lighting to Entrance Doors / Amenity space

- 7.... +39.750m
- 6.... +36.750m
- 5.... +33.80m
- 4.... +30.80m
- 3.... +27.80m
- 2.... +24.80m
- 1.... +21.80m
- UG.... +18.80m
- 0.... +17.60m
- LG.... +15.875m
- .01.... +13.925m
- +10.0m Survey Datum

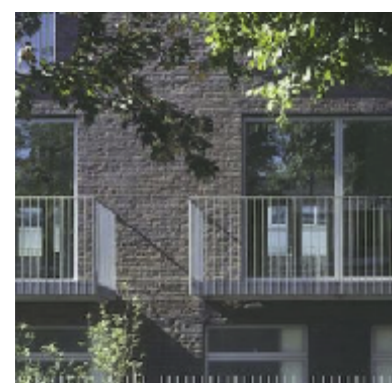


C	General revisions incorporating further coordination	27/2/17
B	Revised in line with design coordination	23/1/16
A	Heights Amended	16/02/15

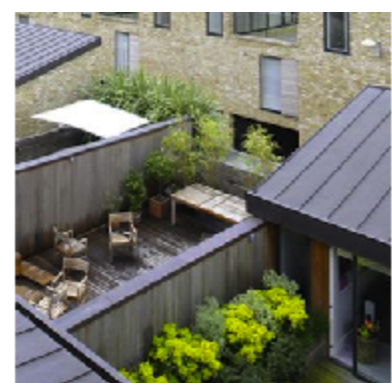
REV	COMMENTS	DATE	CHK
-----	----------	------	-----

STATUS

PLANNING



Projecting balconies - Flat steel section balustrades
Architect: Tony Fretton



Private gardens to rear of ground floor dwellings
Architect: FCB Studio



Planting and seating to external open space

Job 277a Grays Inn Road
Title Proposed Section F
Sheet 6 of 10
Date October 2016
Scale 1:200 @ A2
Drawn JY
Client Regal Homes

126-1306

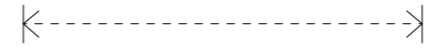
This drawing is prepared for the purposes of a planning application and to show design intent only. The information contained herein must not be used for costing, construction, engineering or any other purposes without agreement in writing from Waugh Thistleton Architects Ltd.

NOTES

1. Ibstock Cooksbridge Yellow clamp stock brick, running bond with flush mortar joints, Euromix masonry mortar 'natural'
2. VM Zinc Pigmento standing seam cladding 'Autumn Red'
3. Fibre C Concrete canopy 'Sahara'
4. VM Zinc Pigmento standing seam cladding panel 'Autumn Red'
5. Woodside Portland Stone coping, grey
6. Composite Timber / Aluminium thermally broken double glazed windows and doors, Ral colour 8099
7. Powder coated steel balcony / balustrade, Ral colour 8099
8. Bio-Diverse green roof
9. Boundary wall, Ibstock Cooksbridge Yellow Brick, height varies
10. Raised planting beds
11. Private residential entrance door
12. Communal residential entrance
13. Commercial B1 entrance
14. Bin Store / Recycling louvered door, Ral 8099
15. Aluminium Rain Water Pipes, square profile, Ral 8099 to brick areas, Ral to match Zinc cladding in Zinc areas
16. External lighting to Entrance Doors / Amenity space



St Chad Street



C	General revisions incorporating further coordination	27/2/17	
B	Revised in line with design coordination	23/1/16	
A	Heights Amended	16/02/15	
REV	COMMENTS	DATE	CHK

STATUS

PLANNING

Job 277a Grays Inn Road
Title Proposed North Elevation
 Sheet 7 of 10
Date October 2016
Scale 1:200 @ A2
Drawn JY
Client Regal Homes

126-1401

7...
+39.75m

6...
+36.75m

5...
+33.80m

4...
+30.80m

3...
+27.80m

2...
+24.80m

1...
+21.80m

UG
+8.80m

0...
+17.60m

LG
+15.875m

-01
+13.975m

+12.0m
Survey Datum



Windows and balconies with integral screening
Architect: Allies & Morrison

Varying reveals to articulate forms and massing
Architect: Ponter Hudspith

Upper storey flats glazed to the north and south with private terraces

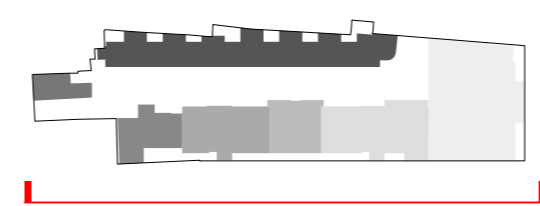
Lightweight, complementary upper storeys.
Architect: Duggan Morris

Projecting balconies - Flat steel section balustrades
Architect: Tony Fretton

This drawing is prepared for the purposes of a planning application and to show design intent only. The information contained herein must not be used for costing, construction, engineering or any other purposes without agreement in writing from Waugh Thistleton Architects Ltd.

NOTES

1. Ibstock Cooksbridge Yellow clamp stock brick, running bond with flush mortar joints
2. VM Zinc Pigmento standing seam cladding 'Autumn Red'
3. Fibre C Concrete canopy 'Sahara'
4. VM Zinc Pigmento standing seam cladding panel 'Autumn Red'
5. Woodside Portland Stone coping, grey
6. Composite Timber / Aluminium thermally broken double glazed windows and doors, Ral colour 809
7. Powder coated steel balcony / balustrade, Ral colour 809
8. Bio-Diverse green roof
9. Boundary wall, Ibstock Cooksbridge Yellow Brick, height varies
10. Raised planting beds
11. Private residential entrance door
12. Communal residential entrance
13. Commercial B1 entrance
14. Bin Store / Recycling louvered door, Ral 809
15. Aluminium Rain Water Pipes, square profile, Ral 809 to brick areas, Ral to match Zinc cladding in Zinc areas
16. External lighting to Entrance Doors / Amenity space



REV	NOTES	DATE	CHK
A	Heights Amended	16/02/15	
B	Flue Added	16/02/15	
C	Revised in line with design coordination	23/11/16	
D	General revisions incorporating further coordination	27/2/17	

**WAUGH
THISTLETON
ARCHITECTS**

77 LEONARD STREET LONDON EC2A 4QS
+44(0) 2076135727 WAUGHTHISTLETON.COM

STATUS
PLANNING

Job Title 277a Grays Inn Road
Proposed West Elevation
Sheet 8 of 10
Date October 2016
Scale 1:200 @ A2
Drawn JY

126-1404

7.
+39.75m

6.
+36.75m

5.
+33.80m

4.
+30.80m

3.
+27.80m

2.
+24.80m

1.
+21.80m

UG
+8.80m

0
+17.60m

LG
+15.875m

-01
+13.975m

+12.0m
Survey Datum



Contemporary terrace/courtyard housing
Architect: FCB Studios

Private rear amenity space
Architect: FCB Studio

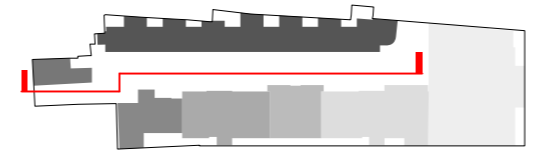
Subservient mass to the rear of an existing terrace
Architect: Peter Barber

Large high level windows to maximise daylight penetration
Architect: Peter Barber

This drawing is prepared for the purposes of a planning application and to show design intent only. The information contained herein must not be used for costing, construction, engineering or any other purposes without agreement in writing from Waugh Thistleton Architects Ltd.

NOTES

1. Ibstock Cocksbridge Yellow clamp stock brick, running bond with flush mortar joints
2. VM Zinc Pigmento standing seam cladding 'Autumn Red'
3. Fibre C Concrete canopy 'Sahara'
4. VM Zinc Pigmento standing seam cladding panel 'Autumn Red'
5. Woodside Portland Stone coping, grey
6. Composite Timber / Aluminium thermally broken double glazed windows and doors, Ral colour Borg
7. Powder coated steel balcony / balustrade, Ral colour Borg
8. Bio-Diverse green roof
9. Boundary wall, Ibstock Cocksbridge Yellow Brick, height varies
10. Raised planting beds
11. Private residential entrance door
12. Communal residential entrance
13. Commercial B1 entrance
14. Bin Store / Recycling louvered door, Ral Borg
15. Aluminium Rain Water Pipes, square profile, Ral Borg to brick areas, Ral to match Zinc cladding in Zinc areas
16. External lighting to Entrance Doors / Amenity space



REV	NOTES	DATE	CHK
A	Height Amended	16/02/15	
B	Height of existing included	15/04/15	
C	Revised in line with design coordination	23/11/16	
D	General revisions incorporating further coordination	27/2/17	

**WAUGH
THISTLETON
ARCHITECTS**

77 LEONARD STREET LONDON EC2A 4QS
+44(0) 2076135727 WAUGHTHISTLETON.COM

PLANNING

STATUS

Job Title 277a Grays Inn Road
Proposed West Elevation
Sheet 9 of 10

Date October 2016

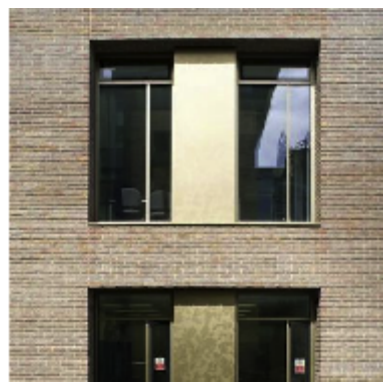
Scale 1:200 @ A2

Drawn JY

126-1405



Mixed stock facing brick - contrasting tones
Architect: FRP Architects



Deep brick reveals with aluminium windows & panels
Architect: Hawkins/Brown



Varying reveals to articulate forms and massing
Architect: Panter Hudspeth



Stepping & recessed massing
Architect: Allies & Morrison

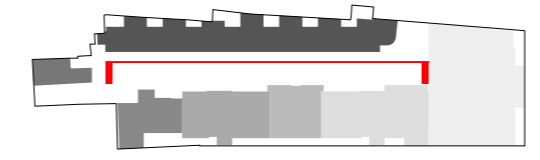


Lightweight, complementary upper storeys
Architect: Duggan Morris

This drawing is prepared for the purposes of a planning application and to show design intent only. The information contained herein must not be used for costing, construction, engineering or any other purposes without agreement in writing from Waugh Thistleton Architects Ltd.

NOTES

1. Ibstock Cooksbridge Yellow clamp stock brick, running bond with flush mortar joints
2. VM Zinc Pigmento standing seam cladding 'Autumn Red'
3. Fibre C Concrete canopy 'Sahara'
4. VM Zinc Pigmento standing seam cladding panel 'Autumn Red'
5. Woodside Portland Stone coping, grey
6. Composite Timber / Aluminium thermally broken double glazed windows and doors, Ral colour Borg
7. Powder coated steel balcony / balustrade, Ral colour Borg
8. Bio-Diverse green roof
9. Boundary wall, Ibstock Cooksbridge Yellow Brick, height varies
10. Raised planting beds
11. Private residential entrance door
12. Communal residential entrance
13. Commercial B entrance
14. Bin Store / Recycling louvered door, Ral Borg
15. Aluminium Rain Water Pipes, square profile, Ral Borg to brick areas, Ral to match Zinc cladding in Zinc areas
16. External lighting to Entrance Doors / Amenity space



REV	NOTES	DATE	CHK
A	Height Amended	16/02/15	
B	Height of existing included	15/04/15	
C	Revised in line with design coordination	23/11/16	
D	General revisions incorporating further coordination	27/2/17	

**WAUGH
THISTLETON
ARCHITECTS**
77 LEONARD STREET LONDON EC2A 4QS
+44(0) 2076135727 WAUGHTHISTLETON.COM

PLANNING

Job Title 277a Grays Inn Road
Proposed East Elevation
Sheet 10 of 10

Date October 2016

Scale 1:200 @ A2

Drawn JY

126-1406