
APPENDIX 6.0

IN RELATION TO DISCHARGE OF CONDITION 3

NOTES

Material Key:

- Ibstock cooksbridge yellow clamp stock
- Euromix mortar 'natural'
- VM zinc pigmento 'autumn red'
- RAL colour: 8019
- Portland stone coping
- Fibre C FE ferro 'sahara'

NB. For further information on material specification and supplier details, please refer to section 1.0 'outline specifications' of the material specification document.

REV	COMMENTS	DATE	CHK
-----	----------	------	-----

STATUS

PLANNING

Job 277a Grays Inn Road

Title Typical External Door

Sheet 1 of 6

Date October 2016

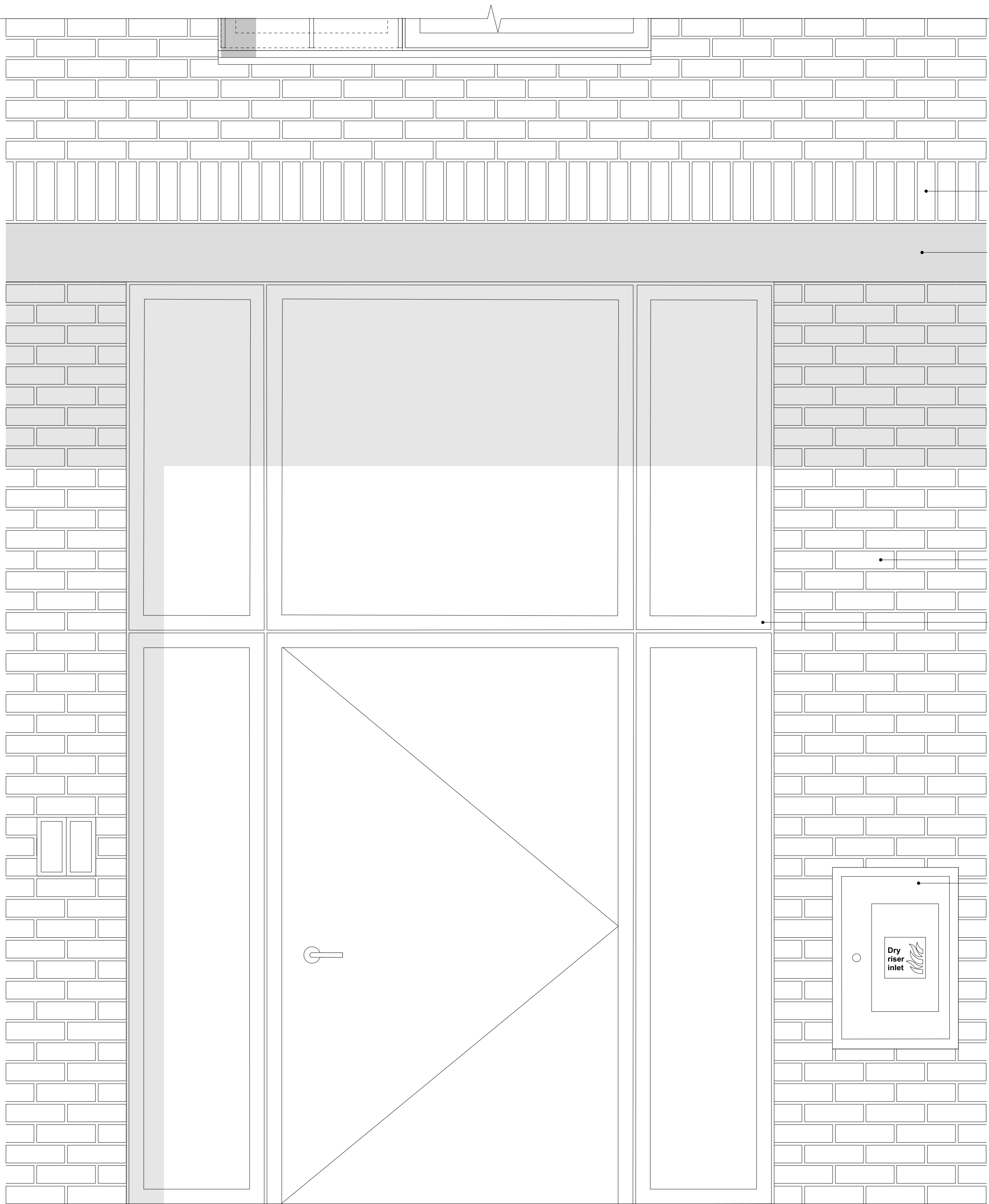
Scale 1:10 @ A1

Drawn JY

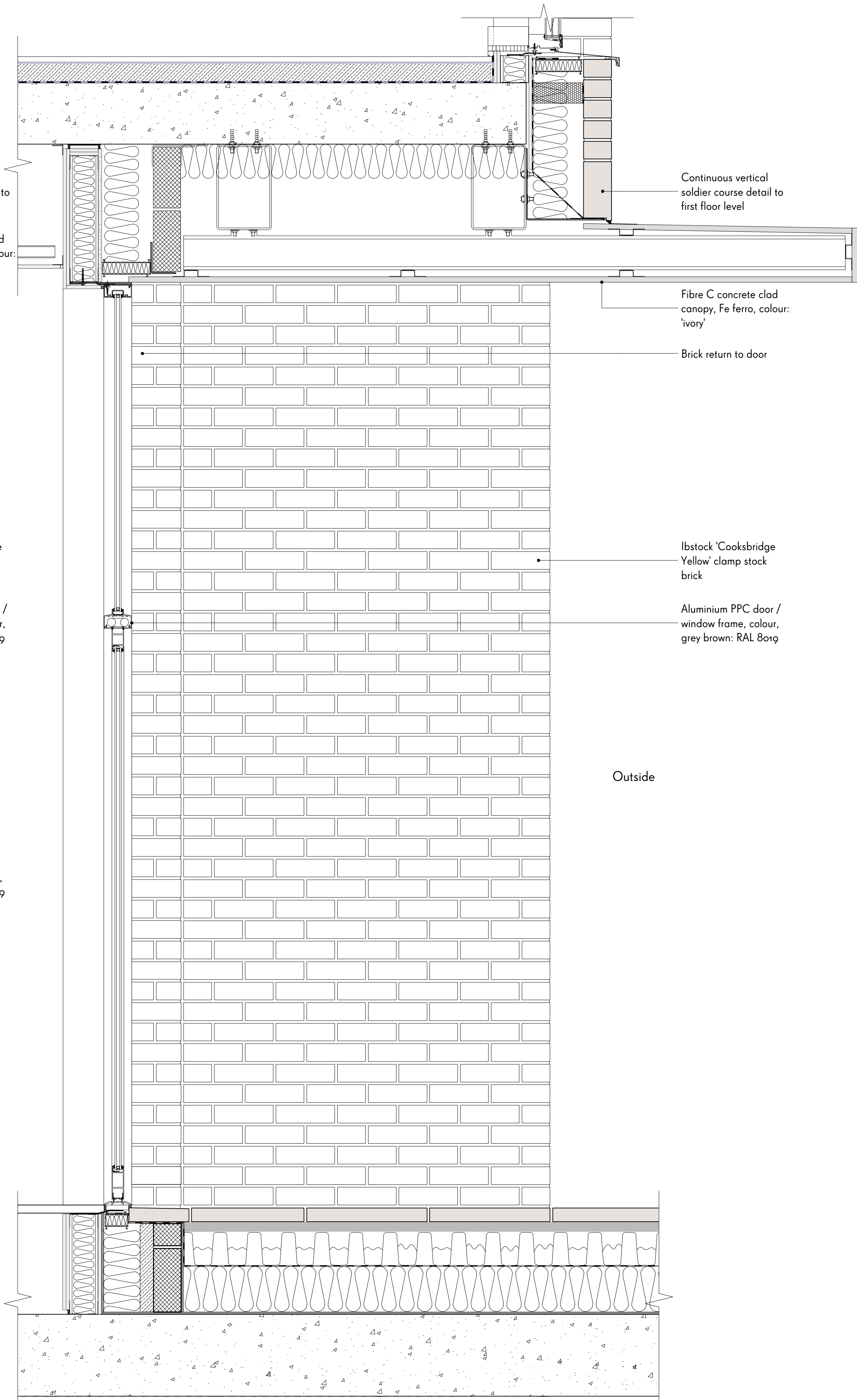
Client Regal Homes

WAUGH THISTLETON
ARCHITECTS

77 LEONARD STREET LONDON EC2A 4QS
+44(0) 20 76135727 WAUGHTHISTLETON.COM



ELEVATION A
Typical entrance door: Core A + C



SECTION A-A
Typical entrance door: Core A + C

1
505

2
505

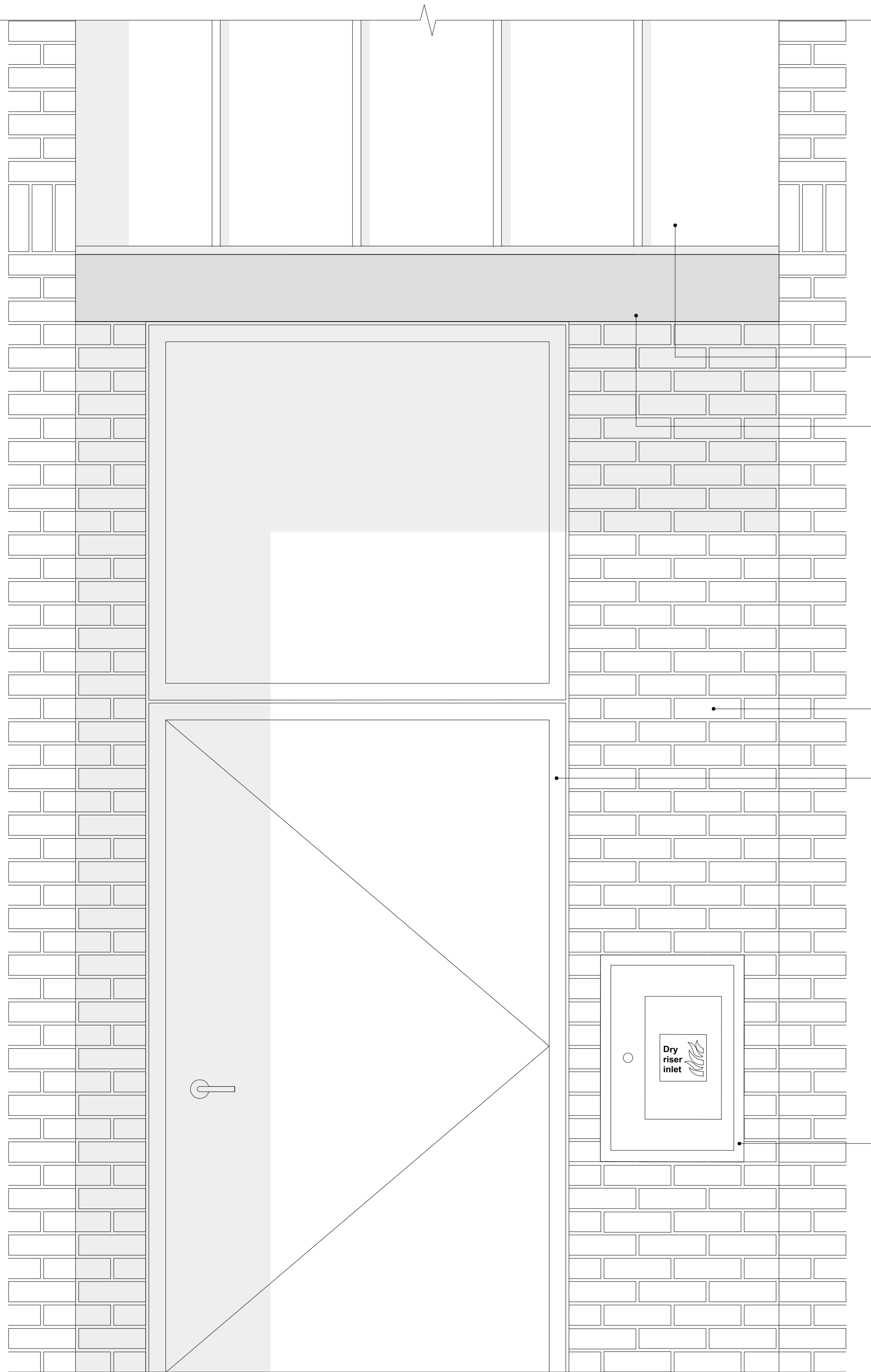
1_529-A-PL-505

NOTES

Material Key:

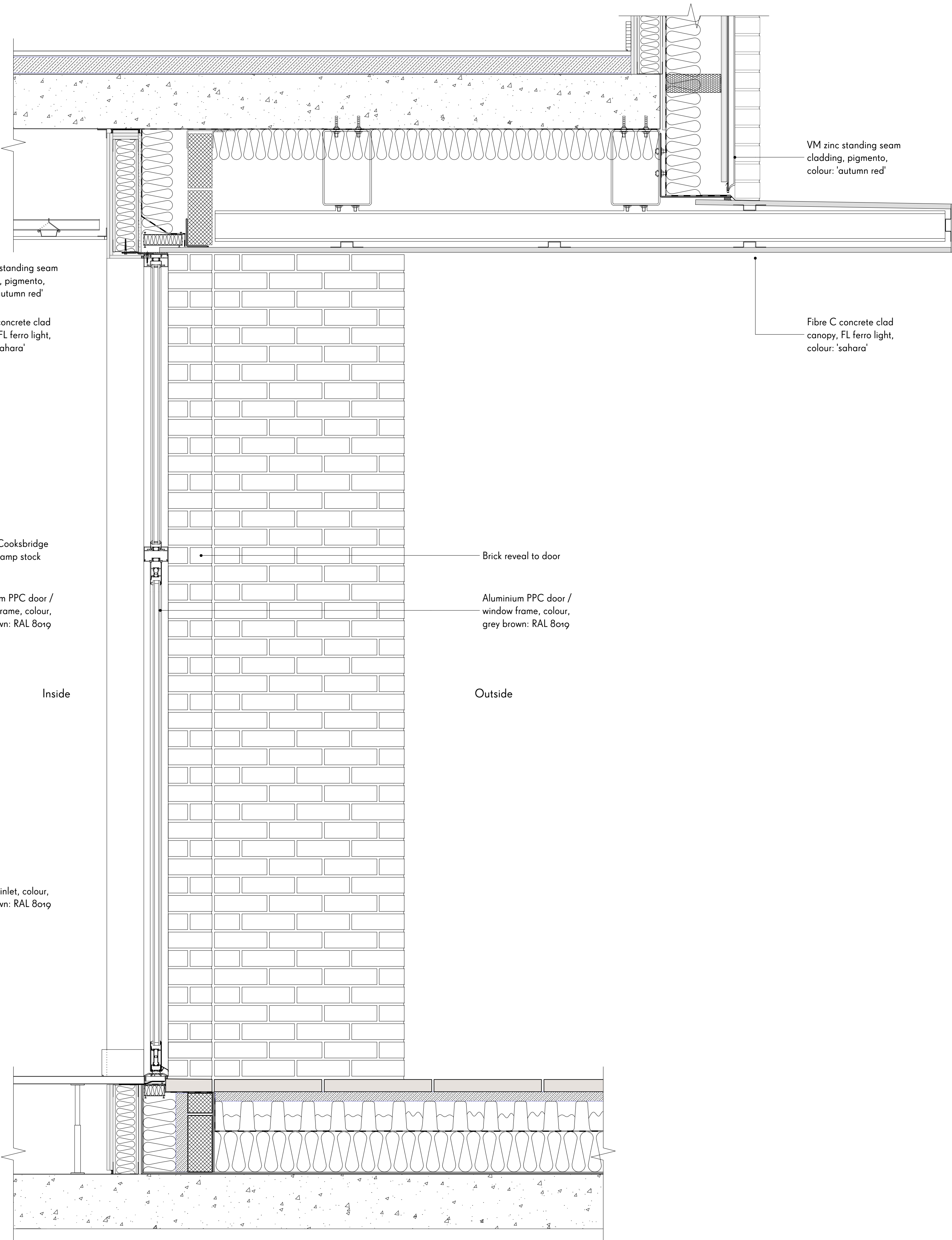
- lbstock cooksbridge yellow clamp stock
- Euromix mortar 'natural'
- VM zinc pigmento 'autumn red'
- RAL colour: 8019
- Portland stone coping
- Fibre C FE ferro 'sahara'

NB. For further information on material specification and supplier details, please refer to section 1.0 'outline specifications' of the material specification document.



1
506

ELEVATION A
Typical entrance door: Core B



2
506

SECTION A-A
Typical entrance door: Core B

REV	COMMENTS	DATE	CHK
-----	----------	------	-----

STATUS

PLANNING

Job 277a Grays Inn Road

Title Typical External Door
Sheet 2 of 6

Date October 2016

Scale 1:10 @ A1

Drawn JY

Client Regal Homes

WAUGH THISTLETON
ARCHITECTS

77 LEONARD STREET LONDON EC2A 4QS
+44(0) 20 76135727 WAUGHTHISTLETON.COM

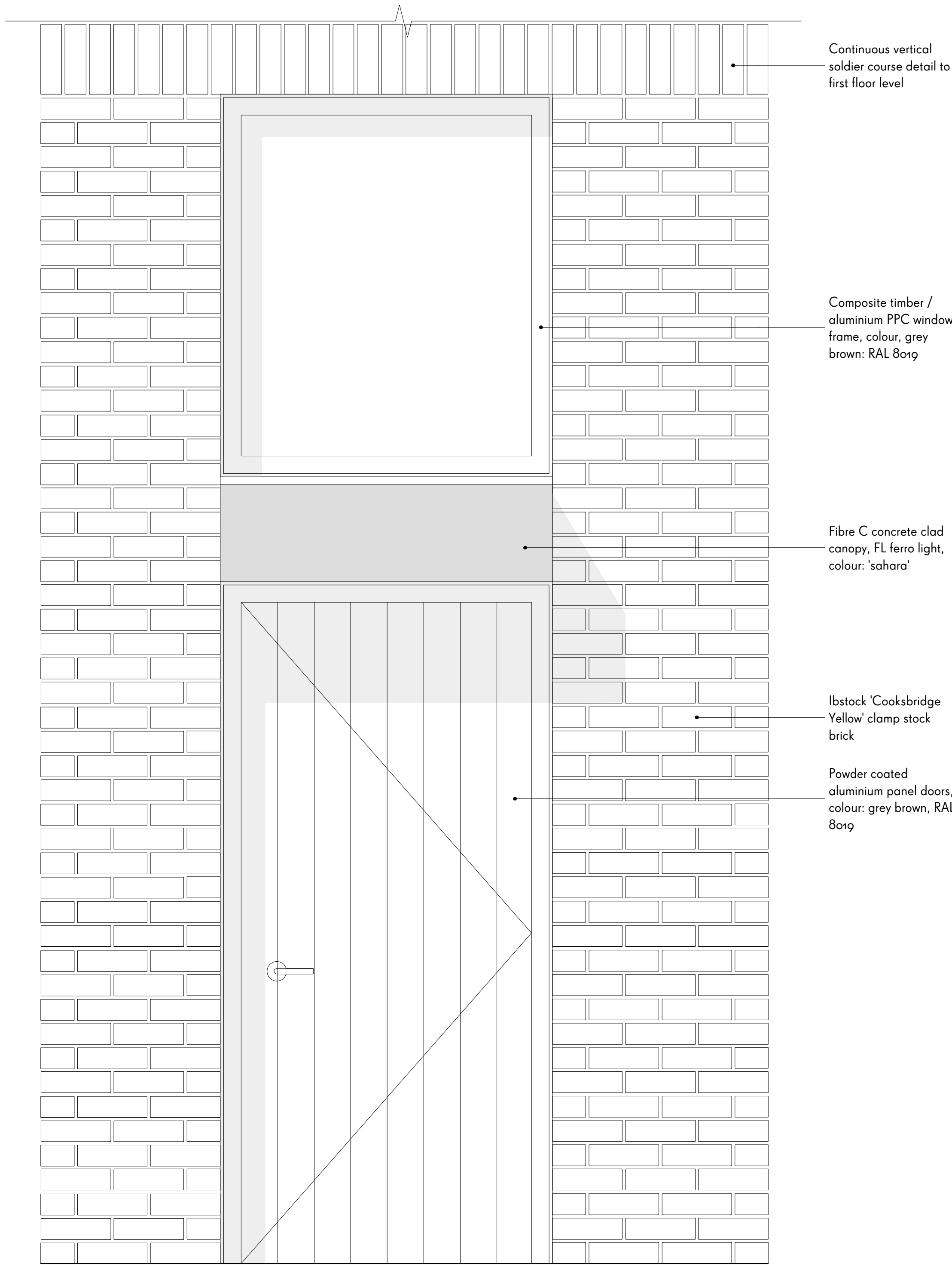
1_529-A-PL-506

NOTES

Material Key:

- lbstock cooksbridge yellow clamp stock
- Euromix mortar 'natural'
- VM zinc pigmento 'autumn red'
- RAL colour: 8019
- Portland stone coping
- Fibre C FE ferro 'sahara'

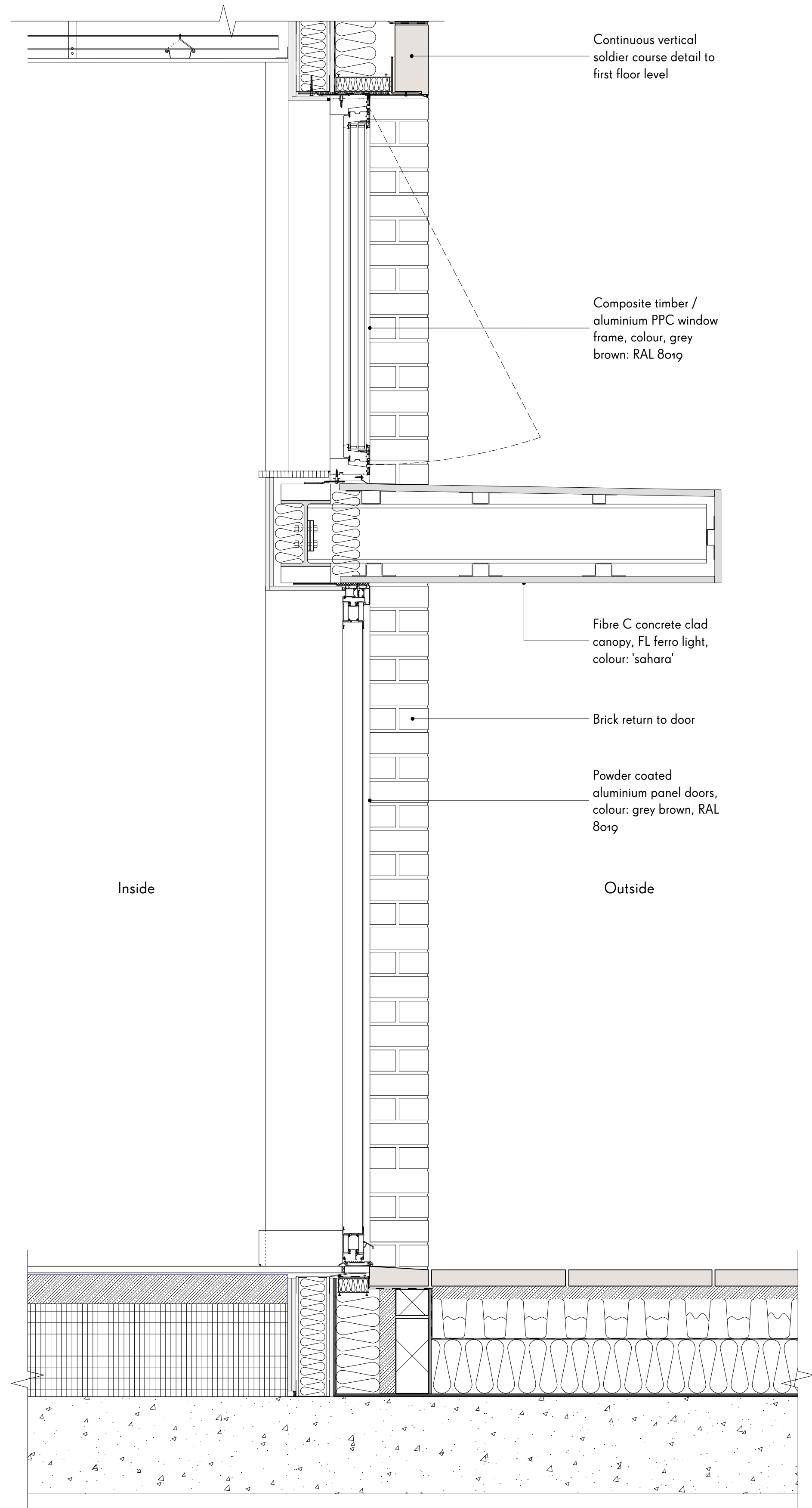
NB. For further information on material specification and supplier details, please refer to section 1.0 'outline specifications' of the material specification document.



1
507
ELEVATION A
Typical dwelling entrance with canopy



2
507
PLAN A
Typical dwelling entrance with canopy



3
507
SECTION A-A
Typical dwelling entrance with canopy

REV	COMMENTS	DATE	CHK
-----	----------	------	-----

STATUS

PLANNING

Job 277a Grays Inn Road

Title Typical External Door
Sheet 3 of 6

Date October 2016

Scale 1:10 @ A1

Drawn JY

Client Regal Homes

WAUGH THISTLETON
ARCHITECTS

77 LEONARD STREET LONDON EC2A 4QS
+44(0) 20 76135727 WAUGHTHISTLETON.COM

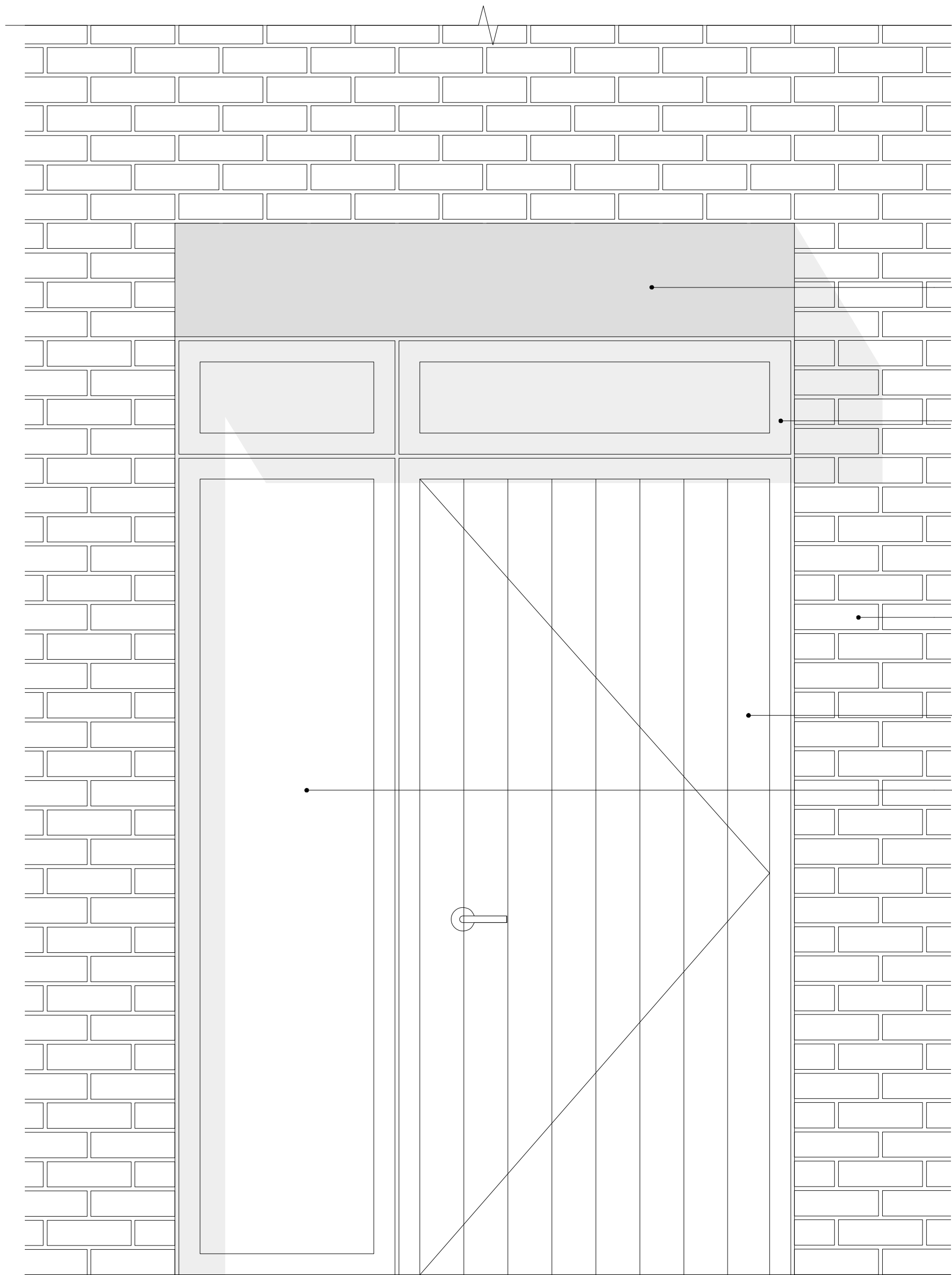
1_529-A-PL-507

NOTES

Material Key:

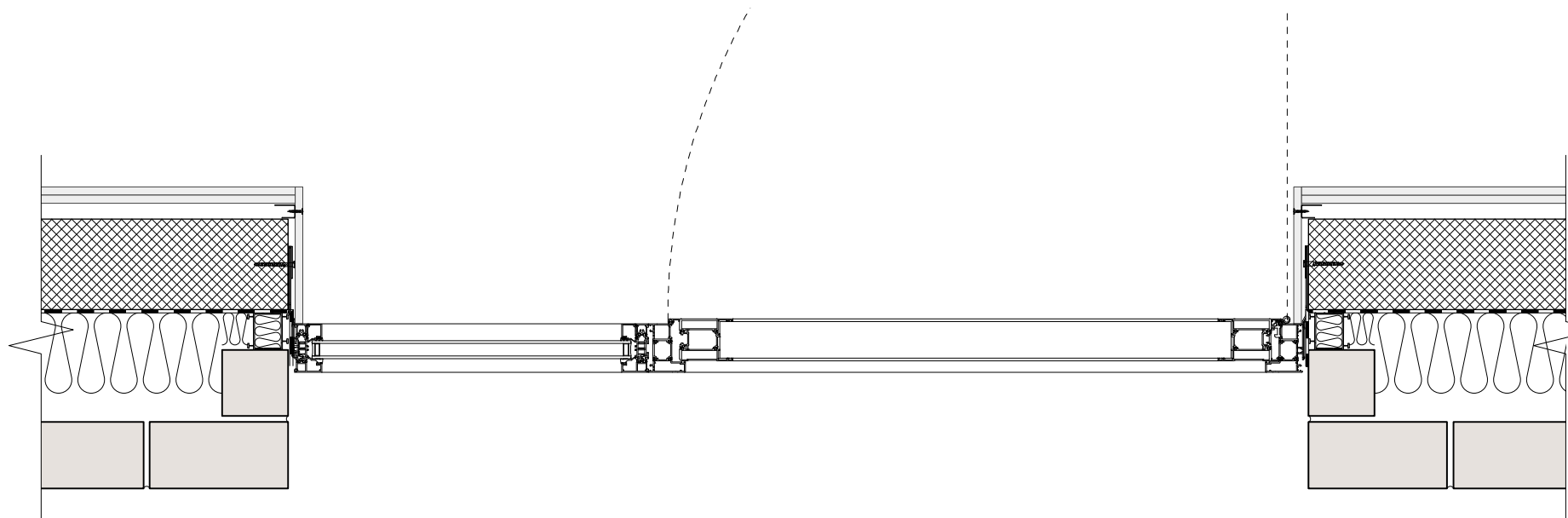
- Ibstock cooksbridge yellow clamp stock
- Euromix mortar 'natural'
- VM zinc pigmento 'autumn red'
- RAL colour: 8019
- Portland stone coping
- Fibre C FE ferro 'sahara'

NB. For further information on material specification and supplier details, please refer to section 1.0 'outline specifications' of the material specification document.



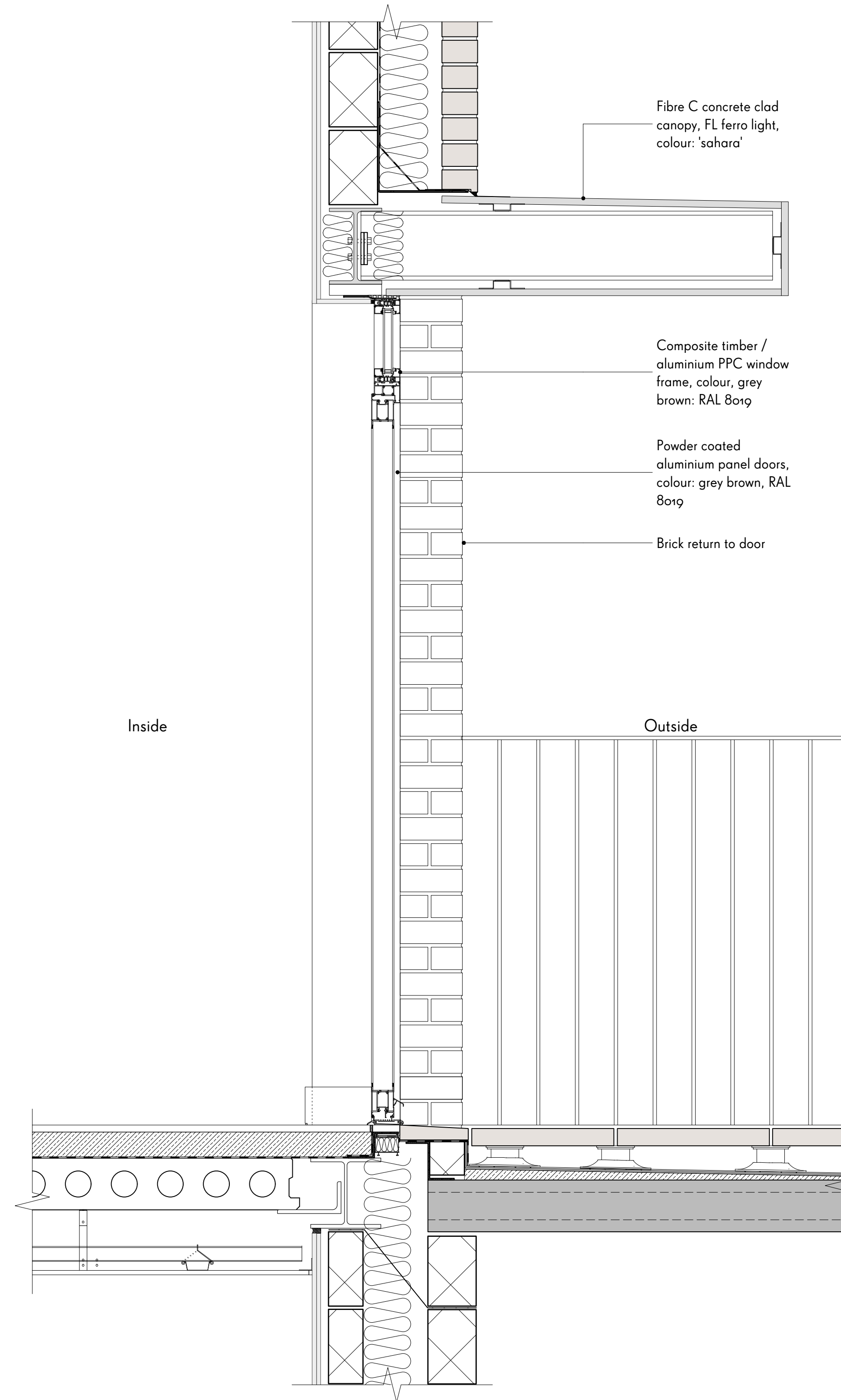
1
508

ELEVATION A
Typical dwelling entrance with canopy



2
508

PLAN A
Typical dwelling entrance with canopy



3
508

SECTION A-A
Typical dwelling entrance with canopy

REV	COMMENTS	DATE	CHK
-----	----------	------	-----

STATUS

PLANNING

Job 277a Grays Inn Road

Title Typical External Door

Sheet 4 of 6

Date October 2016

Scale 1:10 @ A1

Drawn JY

Client Regal Homes

WAUGH THISTLETON
ARCHITECTS

77 LEONARD STREET LONDON EC2A 4QS
+44(0) 20 76135727 WAUGHTHISTLETON.COM

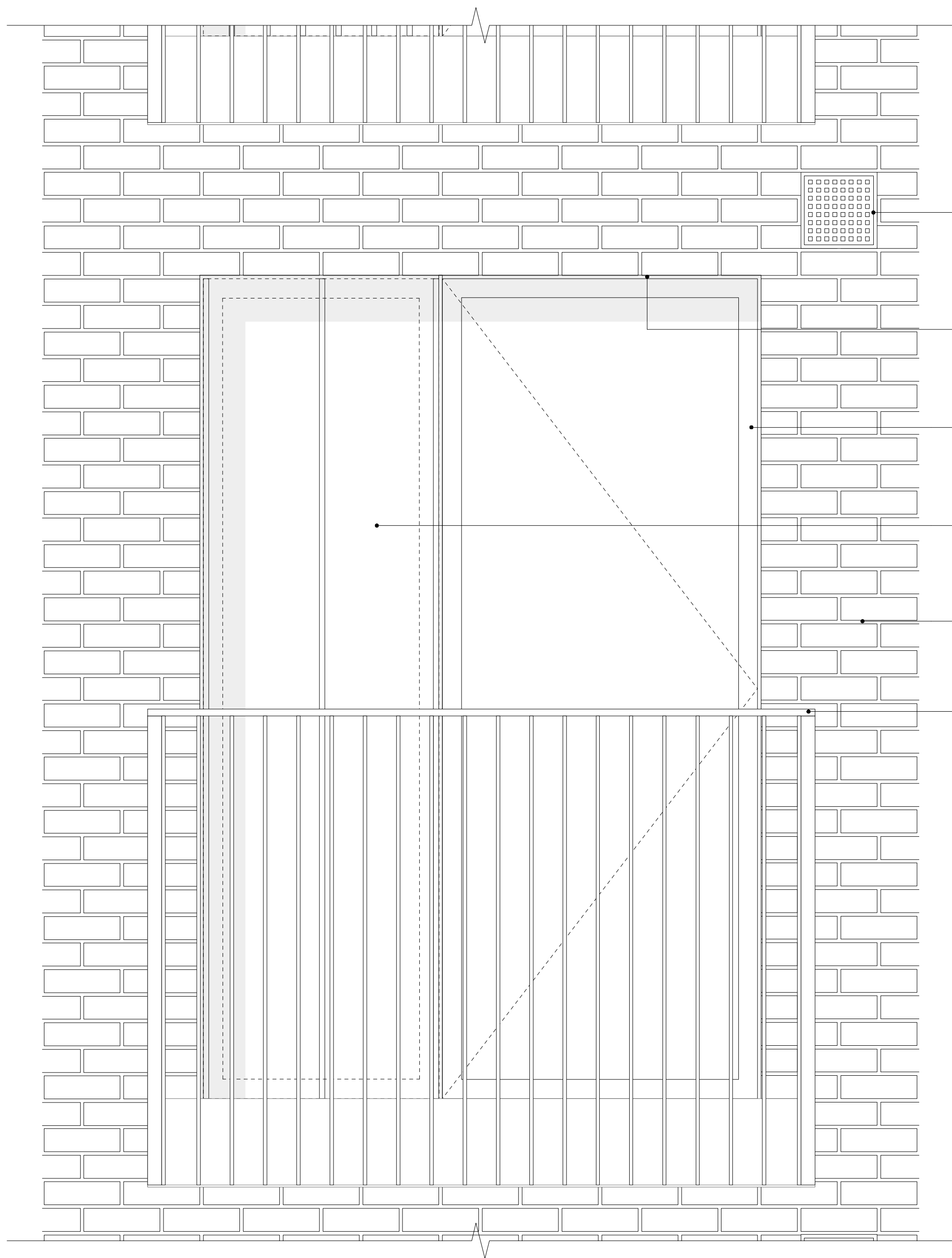
1_529-A-PL-508

NOTES

Material Key:

- lbstock cooksbridge yellow clamp stock
- Euromix mortar 'natural'
- VM zinc pigmento 'autumn red'
- RAL colour: 8019
- Portland stone coping
- Fibre C FE ferro 'sahara'

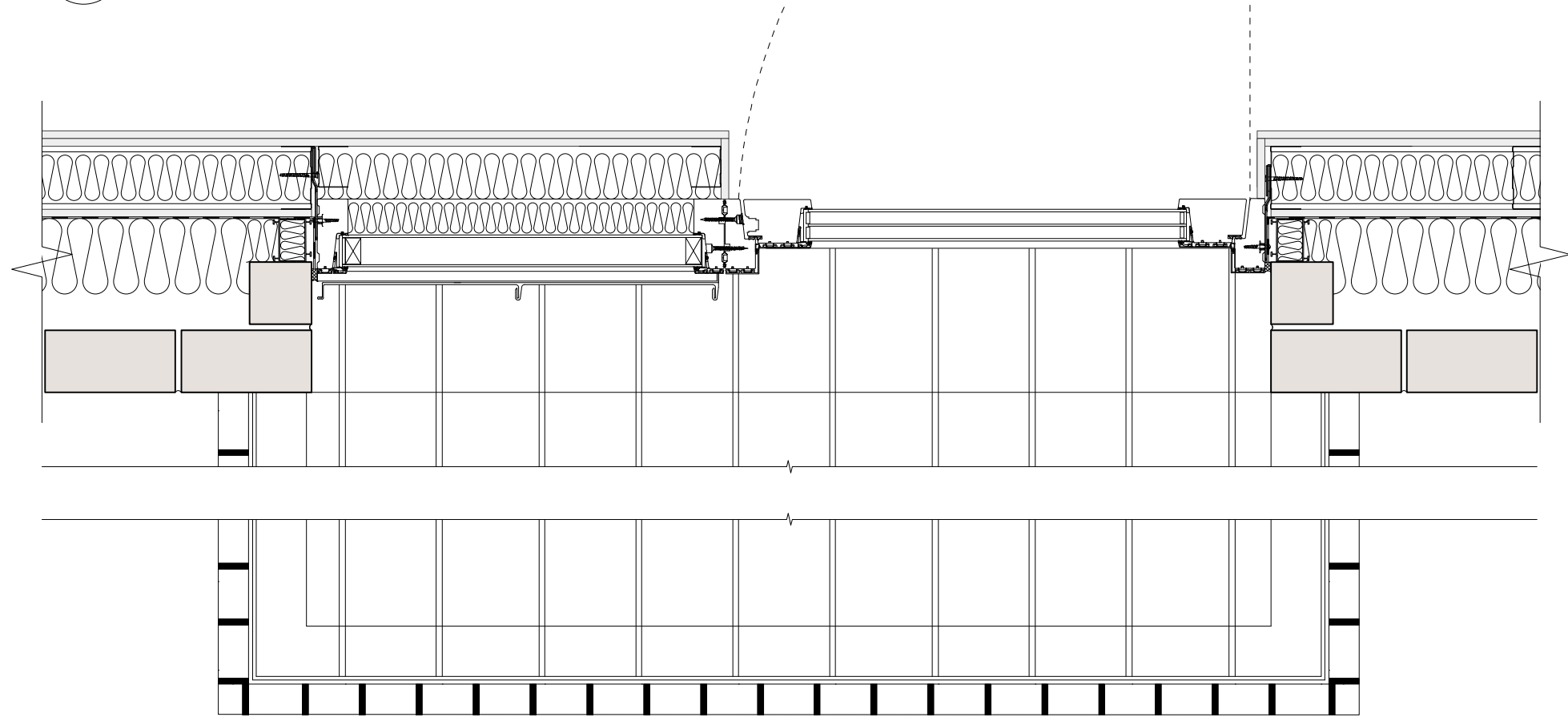
NB. For further information on material specification and supplier details, please refer to section 1.0 'outline specifications' of the material specification document.



- Square holed clay air brick, colour: buff
- PPC aluminium flashing to head of window, colour, grey brown: RAL 8019
- Composite timber / aluminium PPC window frame, colour, grey brown: RAL 8019
- VM zinc standing seam panel, pigmento, colour: 'autumn red'
- lbstock 'Cooksbridge Yellow' clamp stock brick
- 40 x 10 welded PPC steel flats, colour: grey brown, RAL 8019

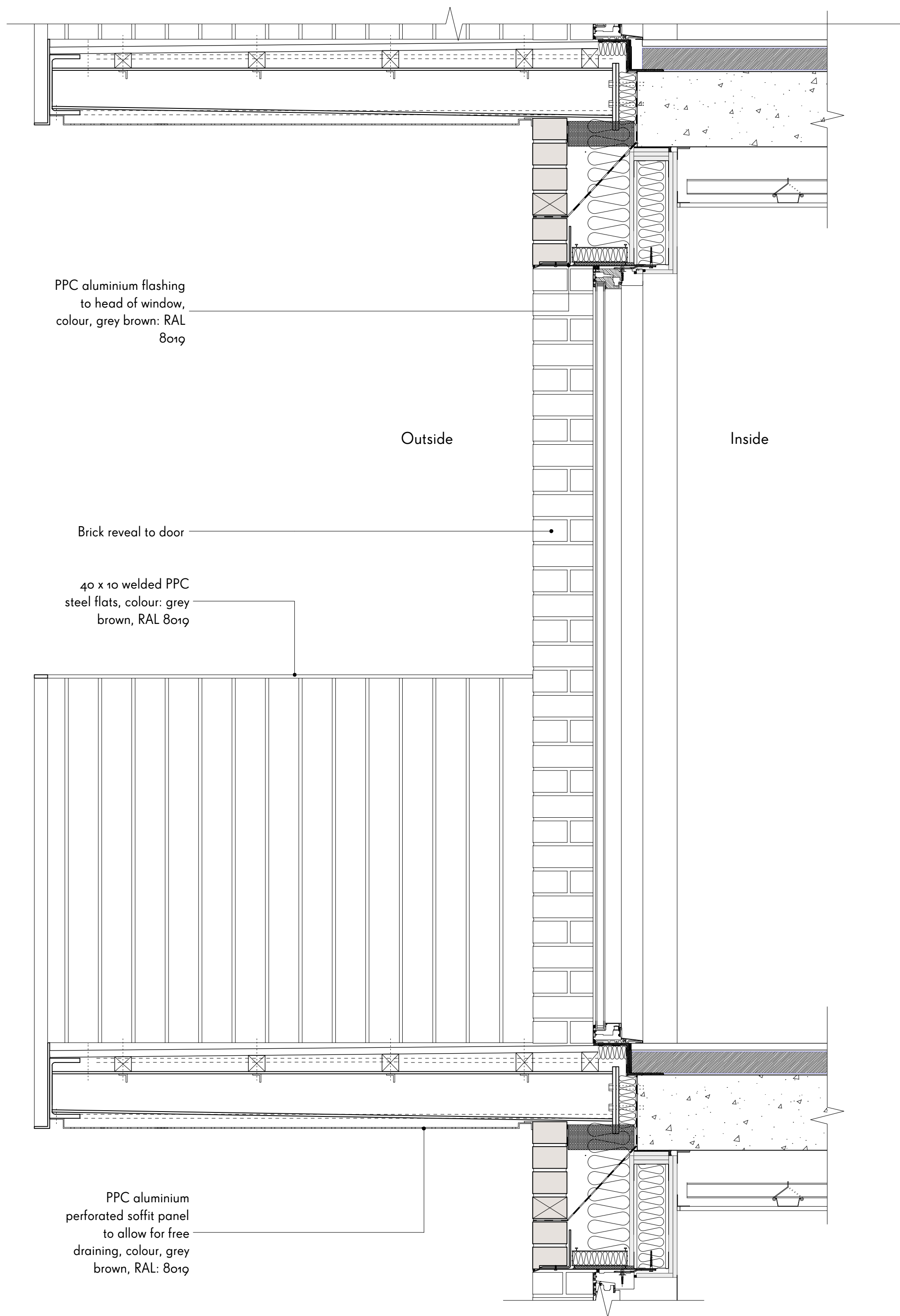
1
509

ELEVATION A
Typical door with zinc panel to balcony



2
509

PLAN A
Typical door with zinc panel to balcony



- PPC aluminium flashing to head of window, colour, grey brown: RAL 8019
- Brick reveal to door
- 40 x 10 welded PPC steel flats, colour: grey brown, RAL 8019
- PPC aluminium perforated soffit panel to allow for free draining, colour, grey brown, RAL: 8019

3
509

SECTION A-A
Typical door with zinc panel to balcony

REV	COMMENTS	DATE	CHK
-----	----------	------	-----

STATUS

PLANNING

Job 277a Grays Inn Road

Title Typical External Door
Sheet 5 of 6

Date October 2016

Scale 1:10 @ A1

Drawn JY

Client Regal Homes

WAUGH THISTLETON
ARCHITECTS

77 LEONARD STREET LONDON EC2A 4QS
+44(0) 20 76135727 WAUGHTHISTLETON.COM

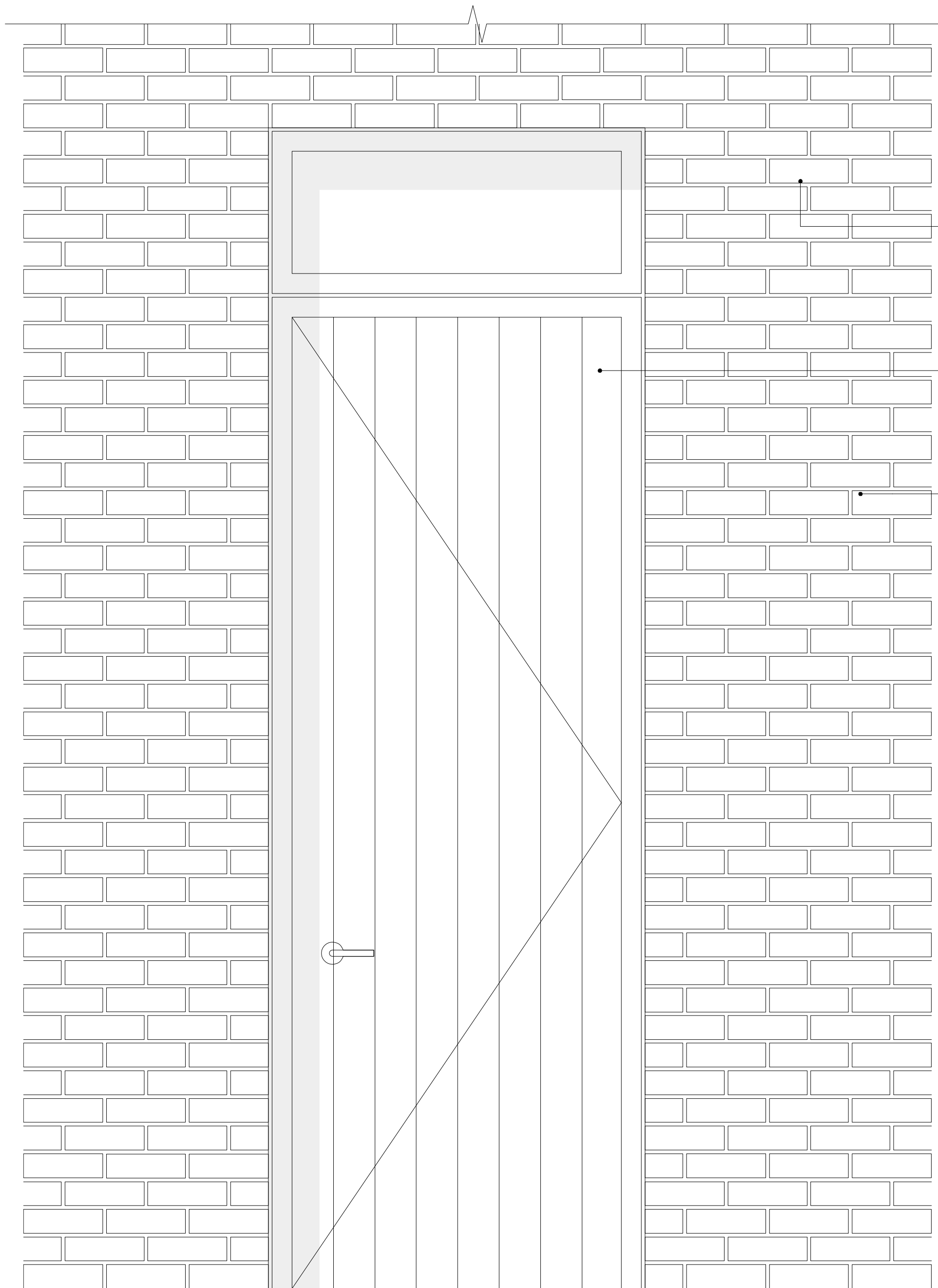
1_529-A-PL-509

NOTES

Material Key:

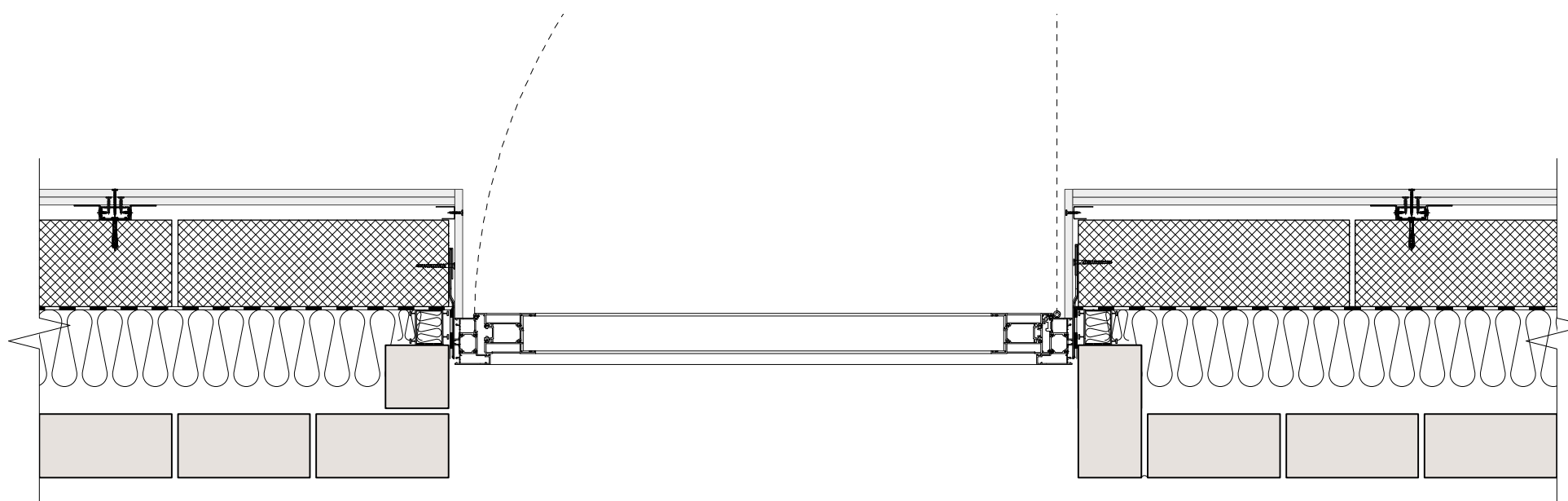
- lbstock cooksbridge yellow clamp stock
- Euromix mortar 'natural'
- VM zinc pigmento 'autumn red'
- RAL colour: 8019
- Portland stone coping
- Fibre C FE ferro 'sahara'

NB. For further information on material specification and supplier details, please refer to section 1.0 'outline specifications' of the material specification document.



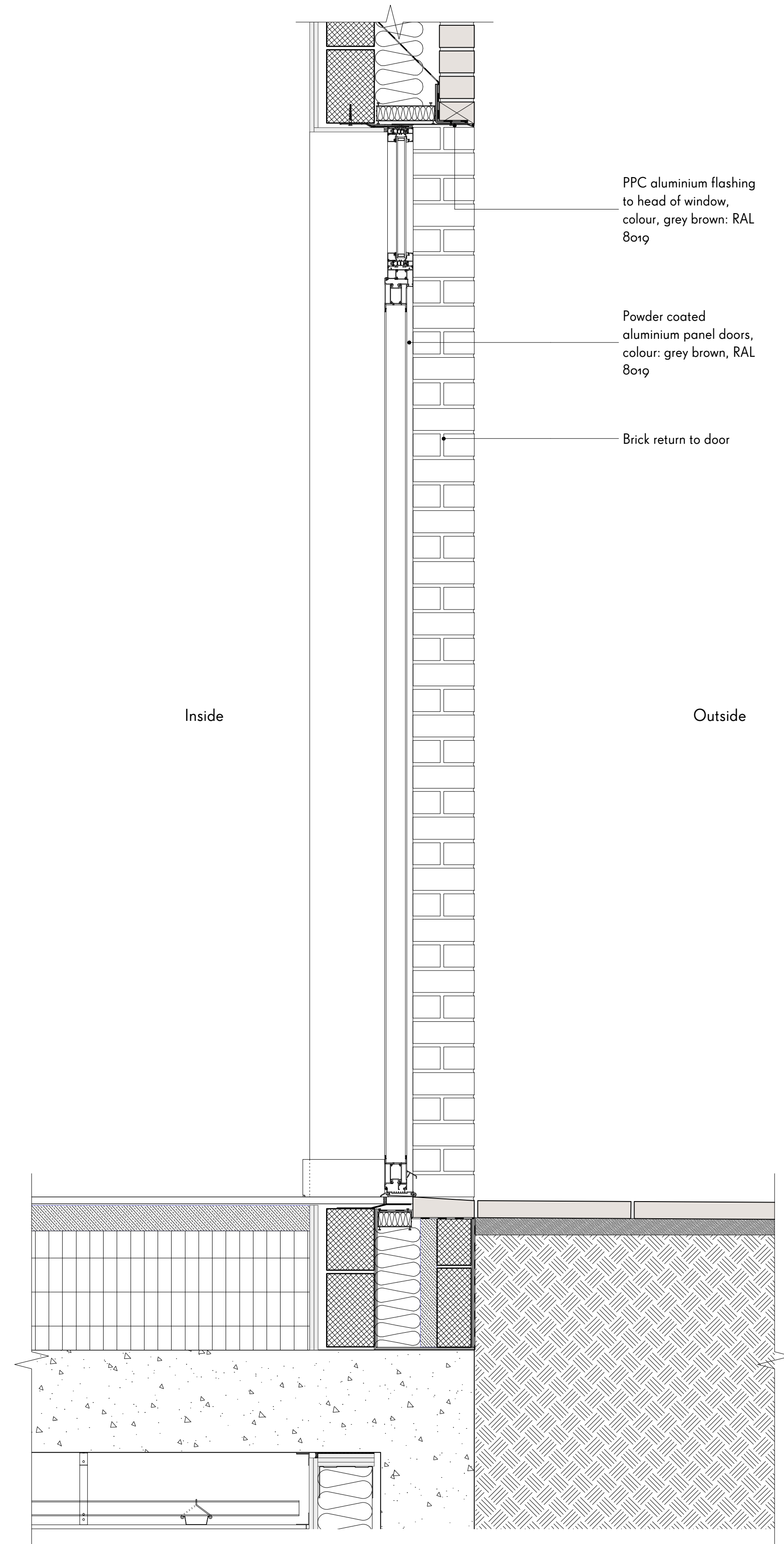
1
510

ELEVATION A
Typical entrance door: Core E



2
510

PLAN A
Typical entrance door: Core E



3
510

SECTION A-A
Typical entrance door: Core E

REV	COMMENTS	DATE	CHK
-----	----------	------	-----

STATUS

PLANNING

Job 277a Grays Inn Road

Title Typical External Door
Sheet 6 of 6

Date October 2016

Scale 1:10 @ A1

Drawn JY

Client Regal Homes

WAUGH THISTLETON
ARCHITECTS

77 LEONARD STREET LONDON EC2A 4QS
+44(0) 20 76135727 WAUGHTHISTLETON.COM

1_529-A-PL-510