
APPENDIX 5.0

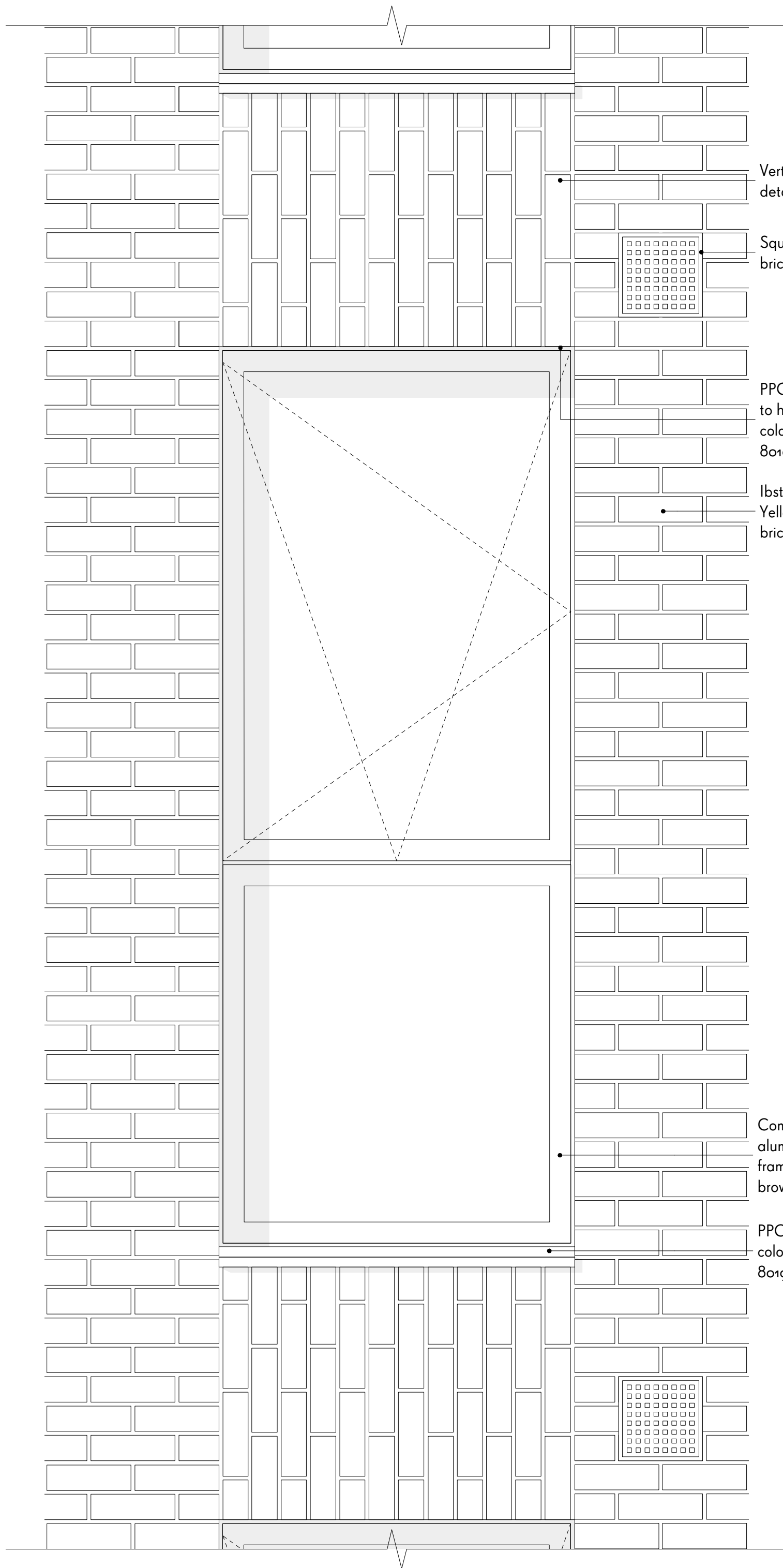
IN RELATION TO DISCHARGE OF CONDITION 3

NOTES

Material Key:

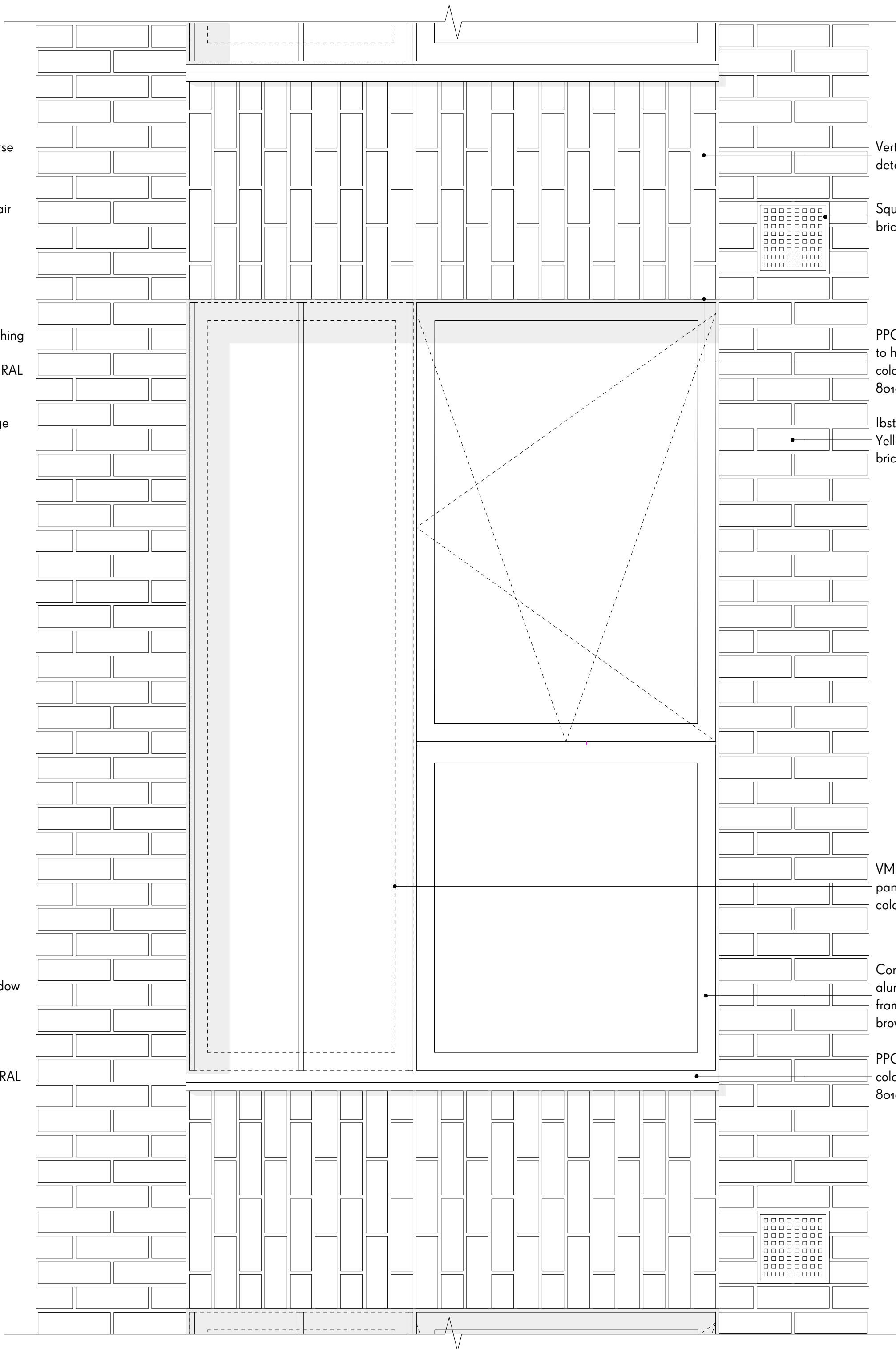
- lbstock cooksbridge yellow clamp stock
- Euromix mortar 'natural'
- VM zinc pigmento 'autumn red'
- RAL colour: 8019
- Portland stone coping
- Fibre C FE ferro 'sahara'

NB. For further information on material specification and supplier details, please refer to section 1.0 'outline specifications' of the material specification document.



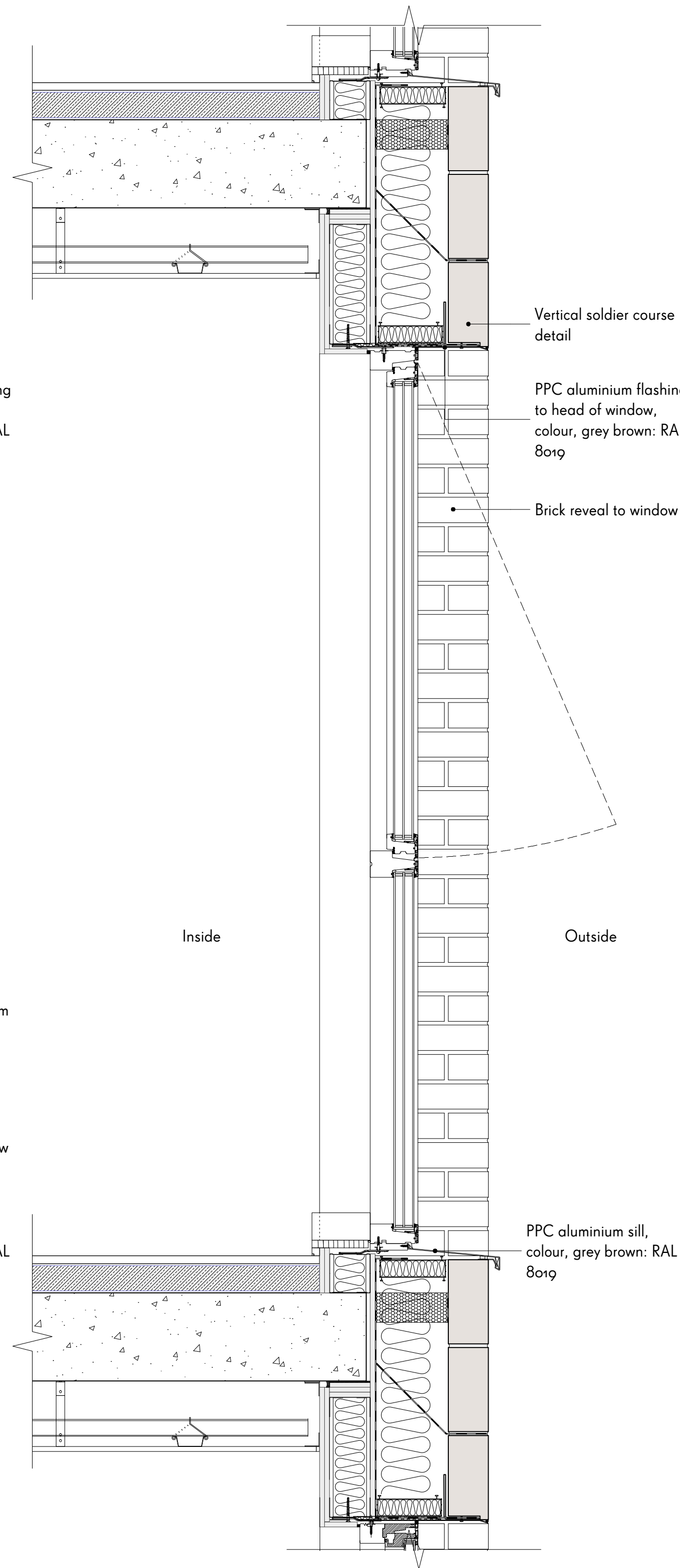
1
501

ELEVATION A
Typical full height window



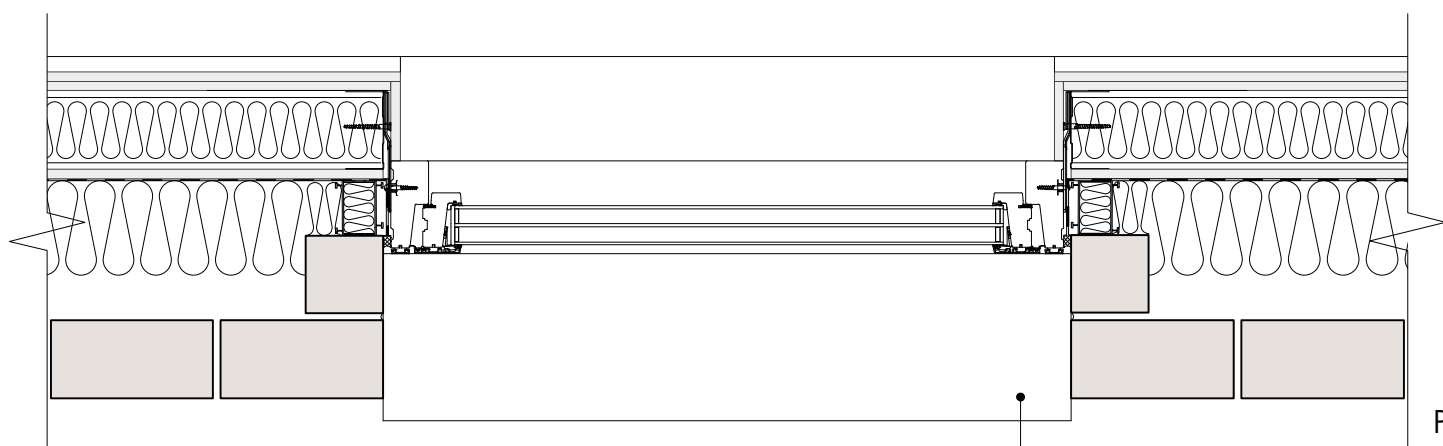
3
501

ELEVATION B
Typical full height window with zinc panel



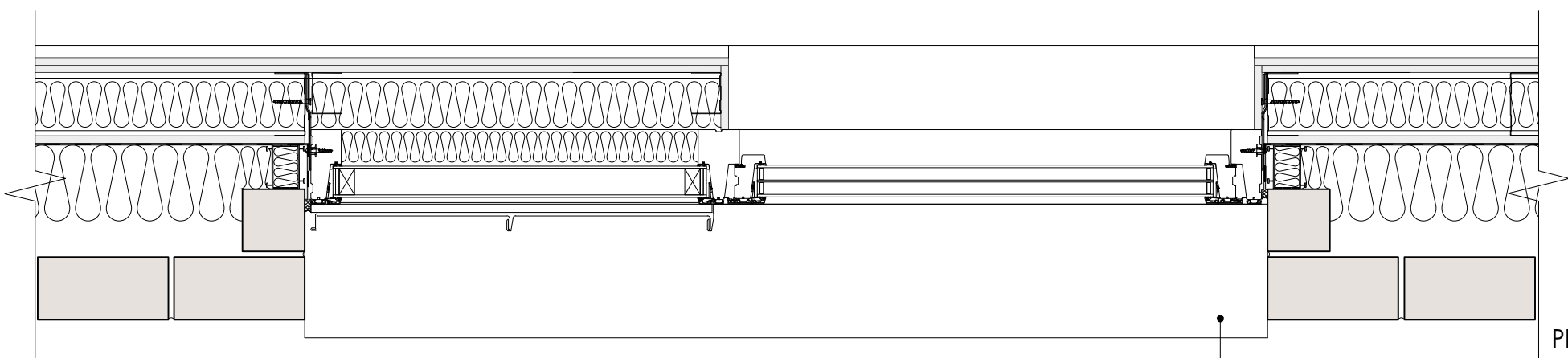
5
501

SECTION A-A
Typical full height window



2
501

PLAN A
Typical full height window



4
501

PLAN B
Typical full height window with zinc panel

REV	COMMENTS	DATE	CHK
-----	----------	------	-----

STATUS

PLANNING

Job 277a Grays Inn Road

Title Window Details

Sheet 1 of 4

Date October 2016

Scale 1:10 @ A1

Drawn JY

Client Regal Homes

WAUGH THISTLETON
ARCHITECTS

77 LEONARD STREET LONDON EC2A 4QS
+44(0) 20 76135727 WAUGHTHISTLETON.COM

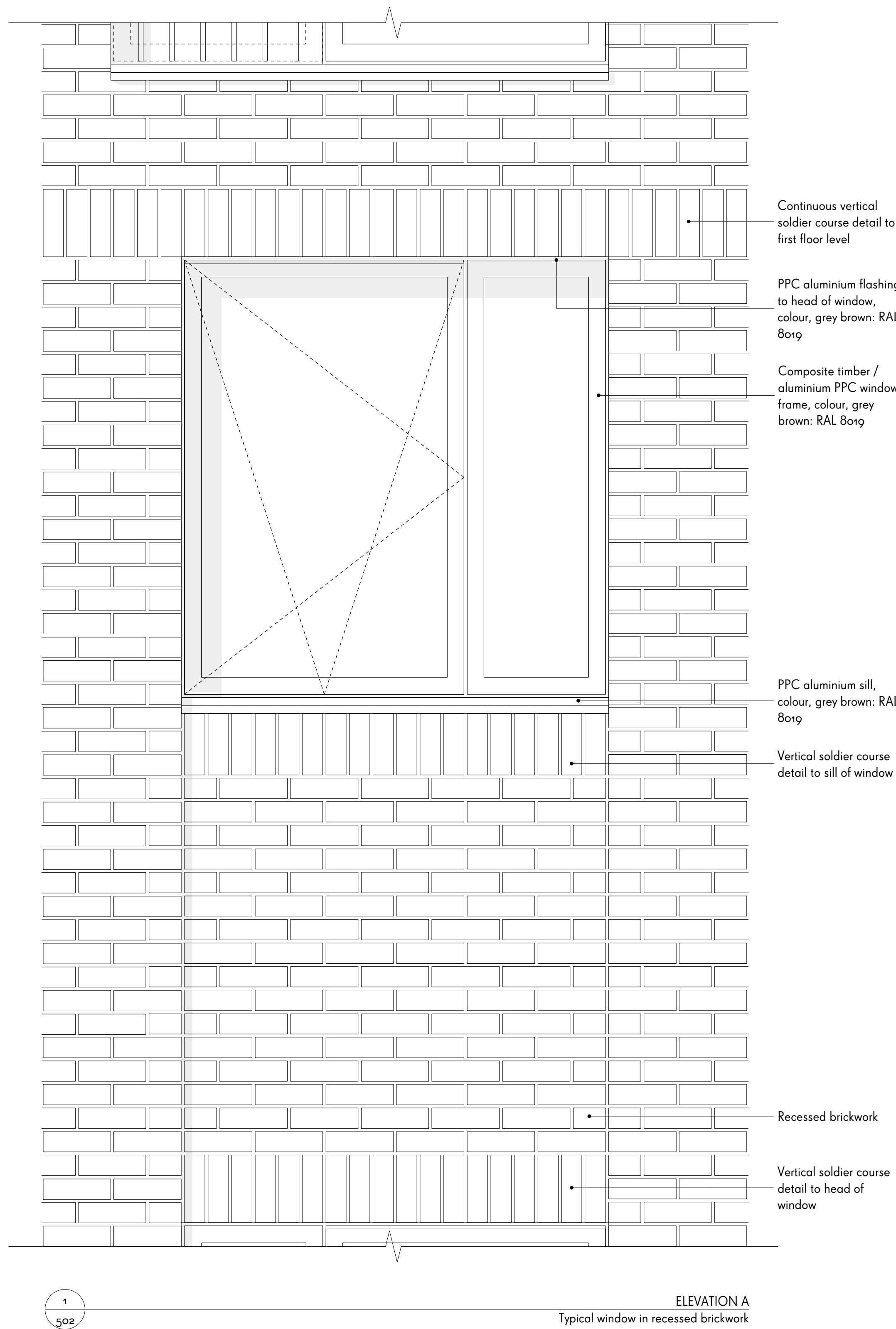
1_529-A-PL-501

NOTES

Material Key:

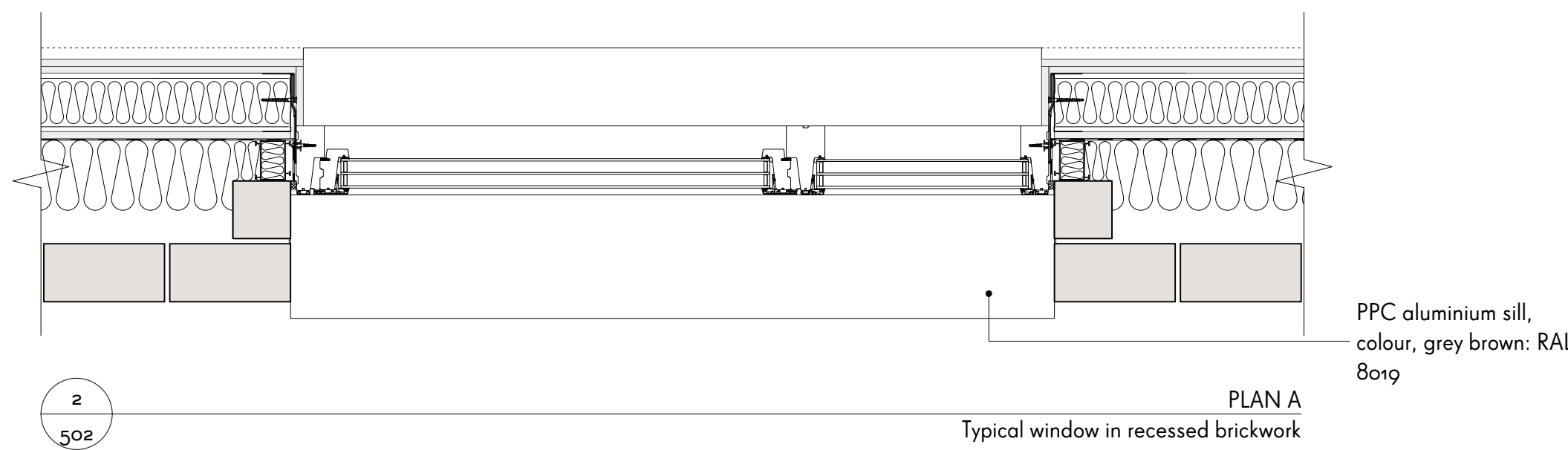
- lbstock cooksbridge yellow clamp stock
- Euromix mortar 'natural'
- VM zinc pigmento 'autumn red'
- RAL colour: 8019
- Portland stone coping
- Fibre C FE ferro 'sahara'

NB. For further information on material specification and supplier details, please refer to section 1.0 'outline specifications' of the material specification document.



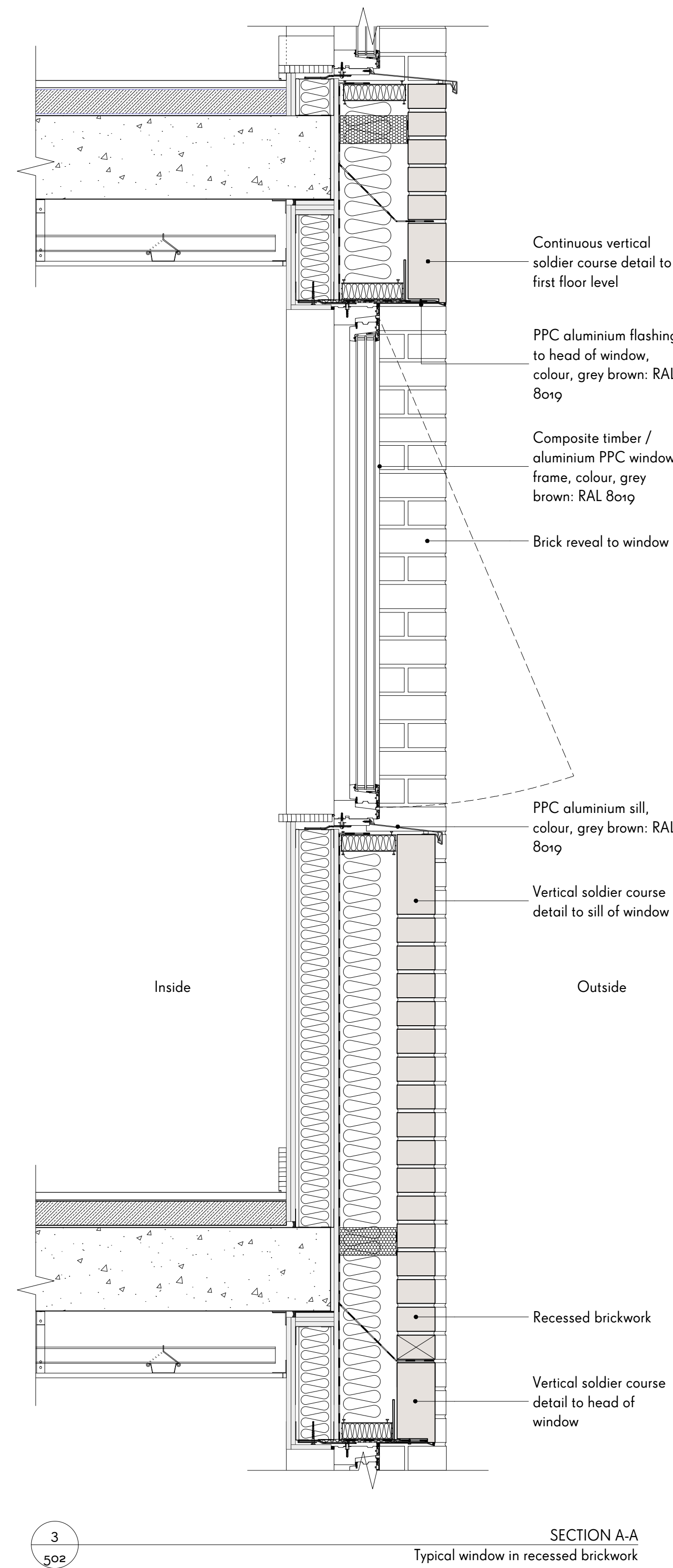
1
502

ELEVATION A
Typical window in recessed brickwork



2
502

PLAN A
Typical window in recessed brickwork



3
502

SECTION A-A
Typical window in recessed brickwork

REV	COMMENTS	DATE	CHK
-----	----------	------	-----

STATUS

PLANNING

Job 277a Grays Inn Road

Title Window Details

Sheet 2 of 4

Date October 2016

Scale 1:10 @ A1

Drawn JY

Client Regal Homes

WAUGH THISTLETON
ARCHITECTS

77 LEONARD STREET LONDON EC2A 4QS
+44(0) 2076135727 WAUGHTHISTLETON.COM

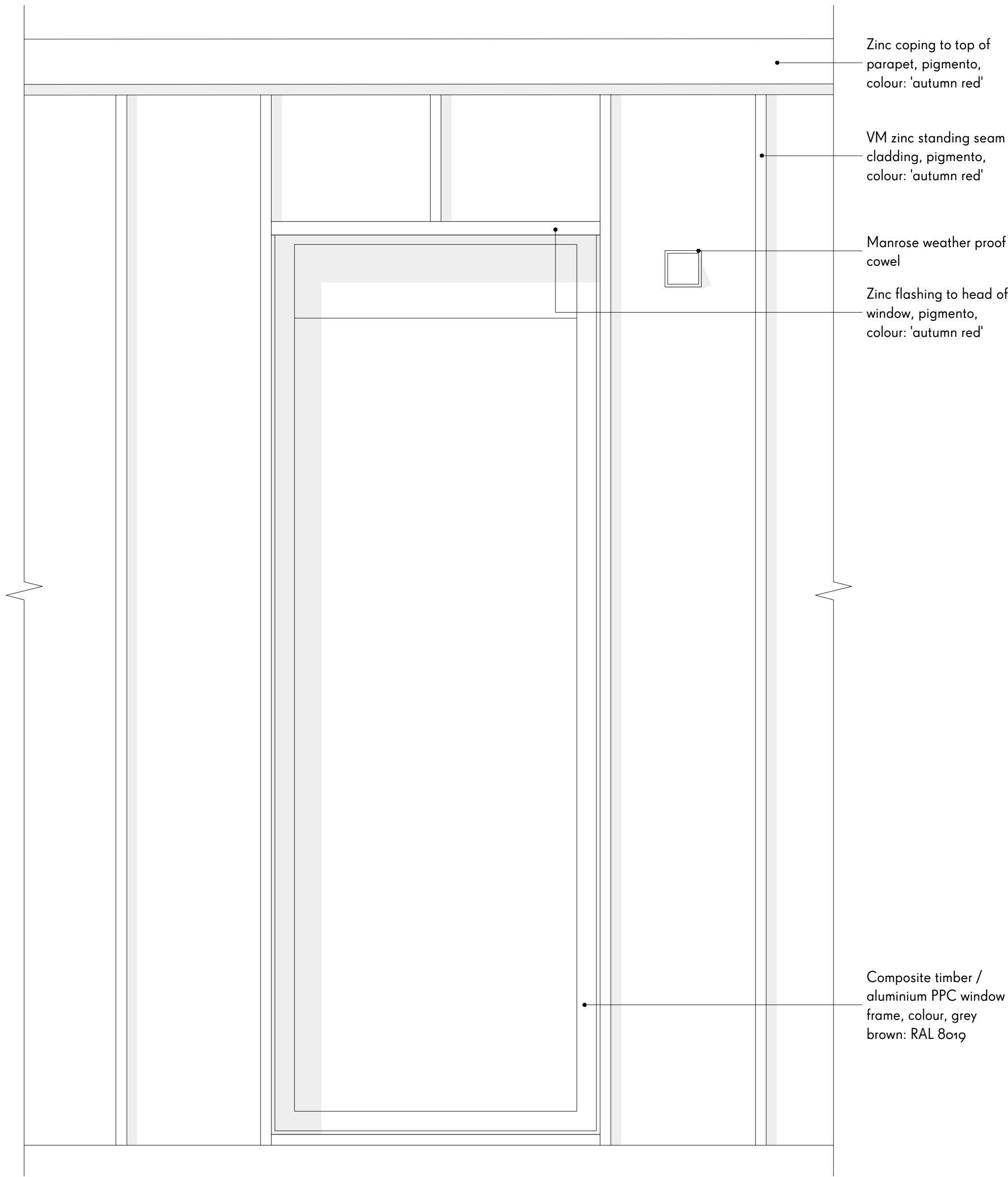
1_529-A-PL-502

NOTES

Material Key:

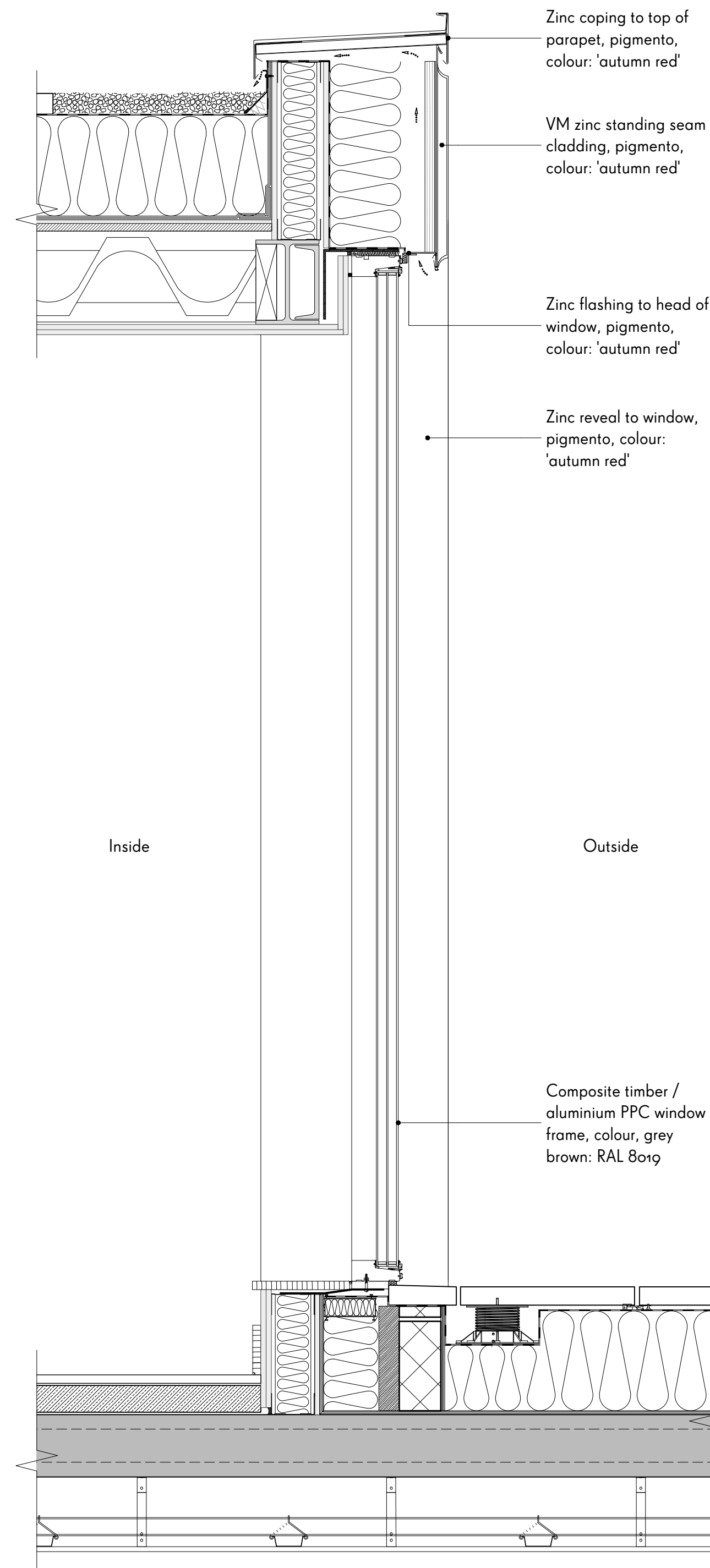
- lbstock cooksbridge yellow clamp stock
- Euromix mortar 'natural'
- VM zinc pigmento 'autumn red'
- RAL colour: 8019
- Portland stone coping
- Fibre C FE ferro 'sahara'

NB. For further information on material specification and supplier details, please refer to section 1.0 'outline specifications' of the material specification document.



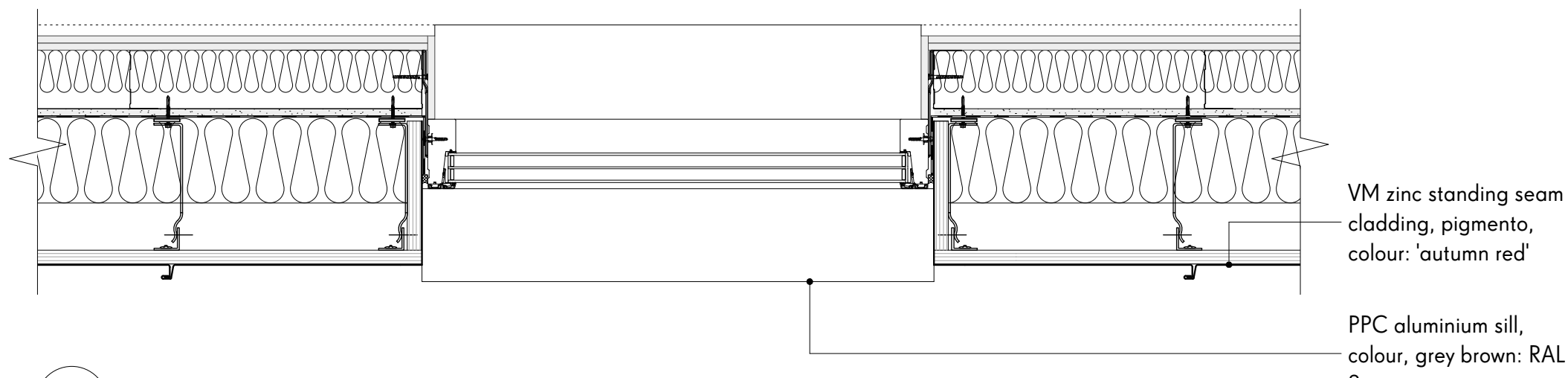
1
503

ELEVATION A
Typical window within zinc cladding



3
503

SECTION A-A
Typical window within zinc cladding



2
503

PLAN A
Typical window within zinc cladding

REV	COMMENTS	DATE	CHK
-----	----------	------	-----

STATUS

PLANNING

Job 277a Grays Inn Road

Title Window Details

Sheet 3 of 4

Date October 2016

Scale 1:10 @ A1

Drawn JY

Client Regal Homes

WAUGH THISTLETON
ARCHITECTS

77 LEONARD STREET LONDON EC2A 4QS
+44(0) 20 76135727 WAUGHTHISTLETON.COM

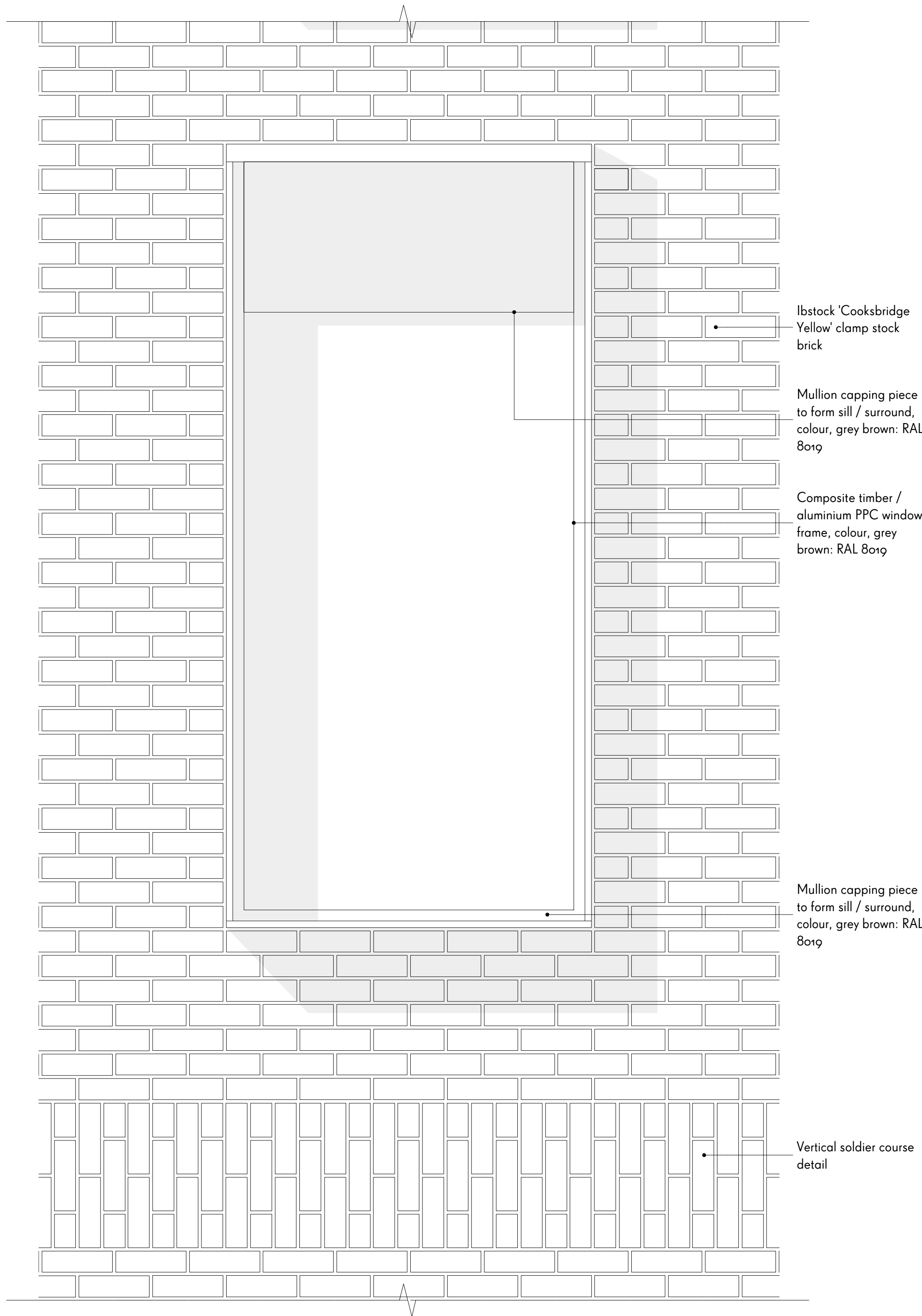
1_529-A-PL-503

NOTES

Material Key:

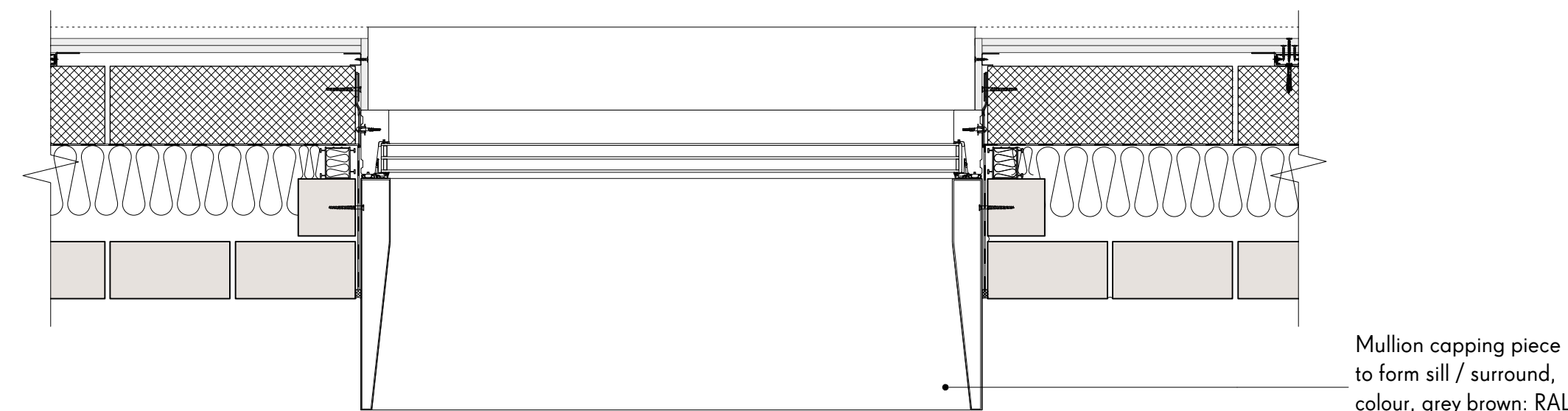
- Ibstock cooksbridge yellow clamp stock
- Euromix mortar 'natural'
- VM zinc pigmento 'autumn red'
- RAL colour: 8019
- Portland stone coping
- Fibre C FE ferro 'sahara'

NB. For further information on material specification and supplier details, please refer to section 1.0 'outline specifications' of the material specification document.



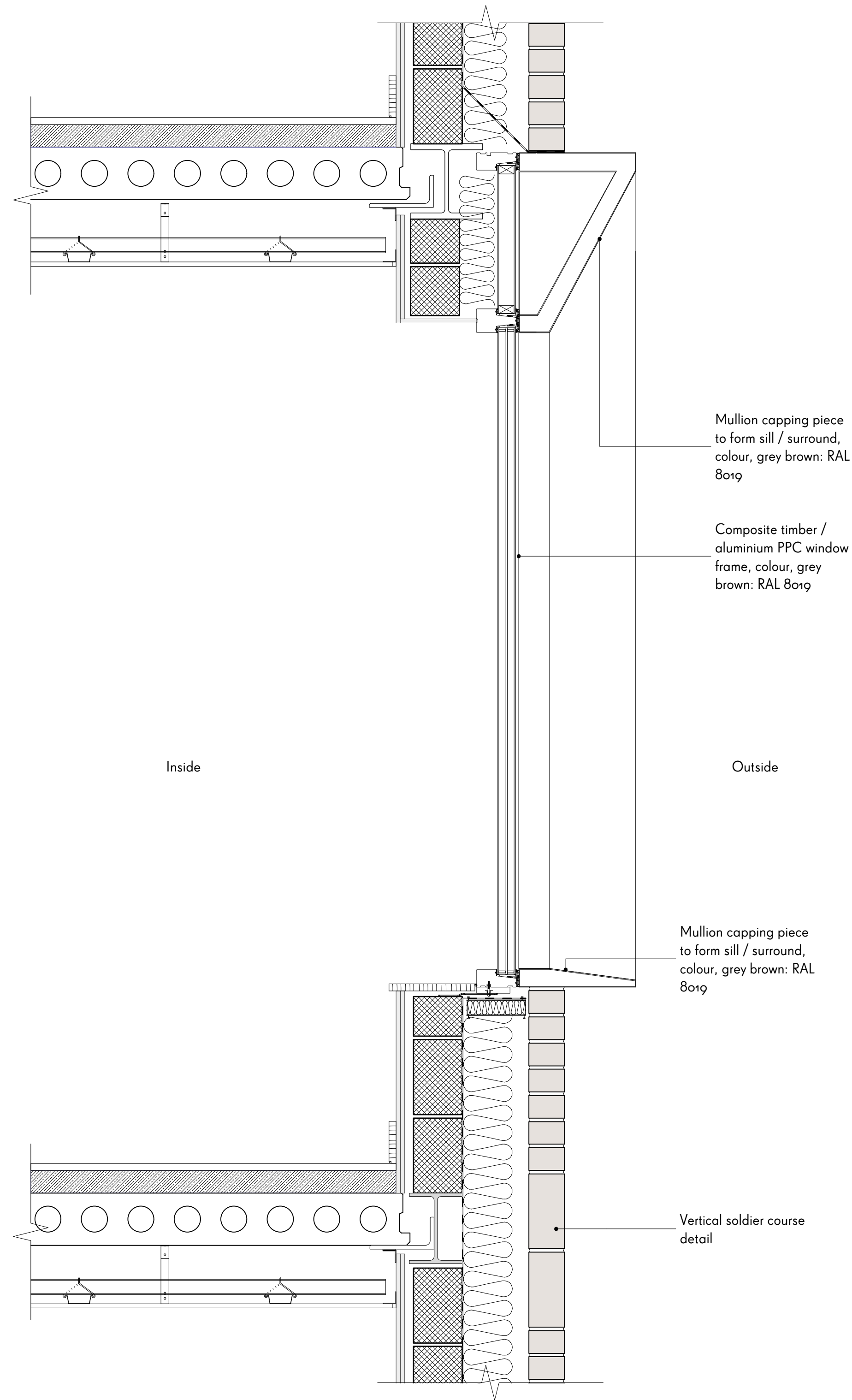
1
504

ELEVATION A
Typical window with projecting zinc



2
504

PLAN A
Typical window with projecting zinc



3
504

SECTION A-A
Typical window with projecting zinc

REV	COMMENTS	DATE	CHK
-----	----------	------	-----

STATUS

PLANNING

Job 277a Grays Inn Road
Title Window Details
Sheet 4 of 4
Date October 2016
Scale 1:10 @ A1
Drawn JY
Client Regal Homes

1_529-A-PL-504

WAUGH THISTLETON
ARCHITECTS

77 LEONARD STREET LONDON EC2A 4QS
+44(0) 2076135727 WAUGHTHISTLETON.COM