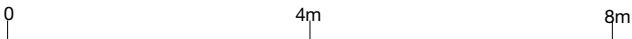
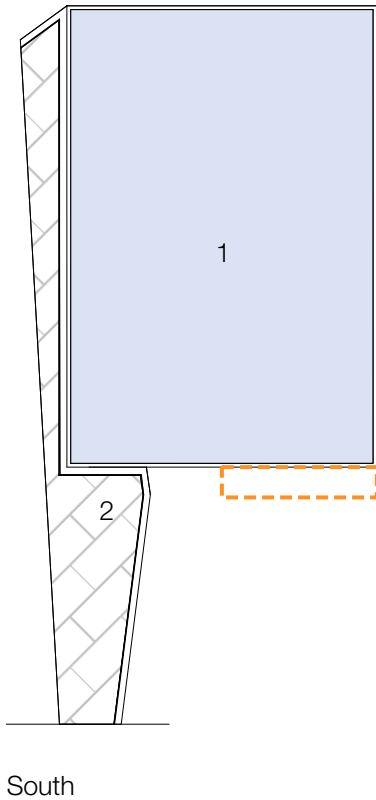
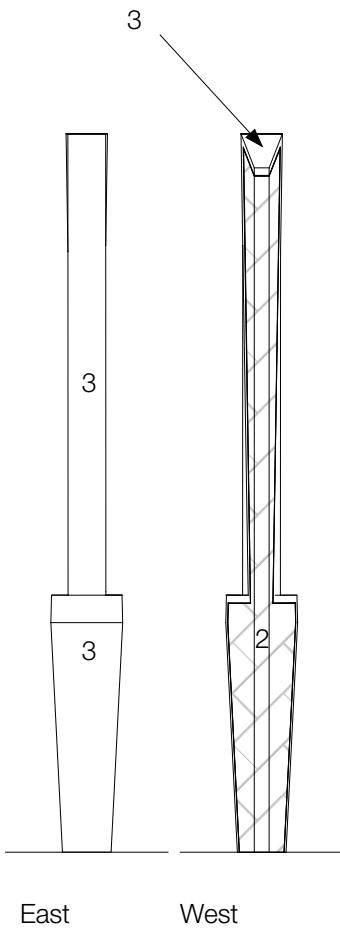
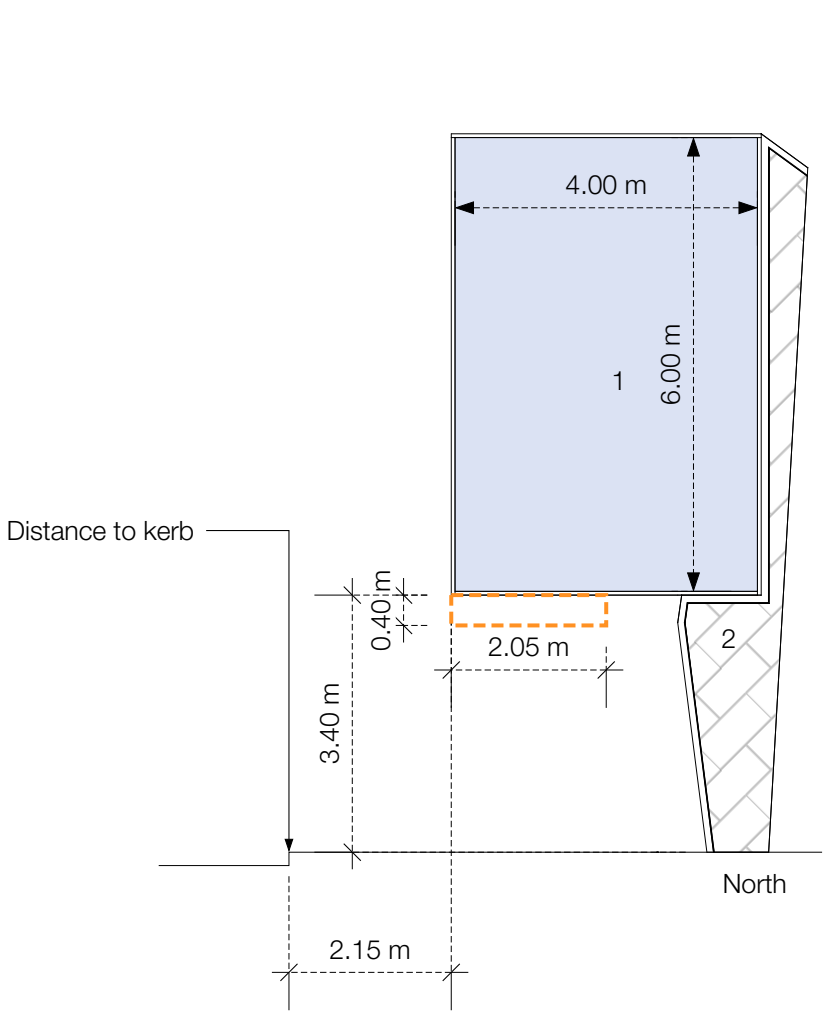
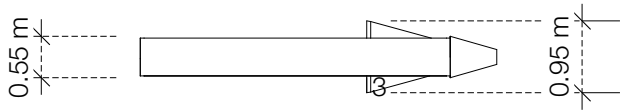




WILDSTONE

22 Berghem Mews
Blythe Road
London
W14 0HN
www.wildstone.co.uk
020 7313 9571



// Title
Specification Sheet

// Project
Land at Euston Road corner of
Hampstead Road, NW1 2DU

Client
London Borough of Camden

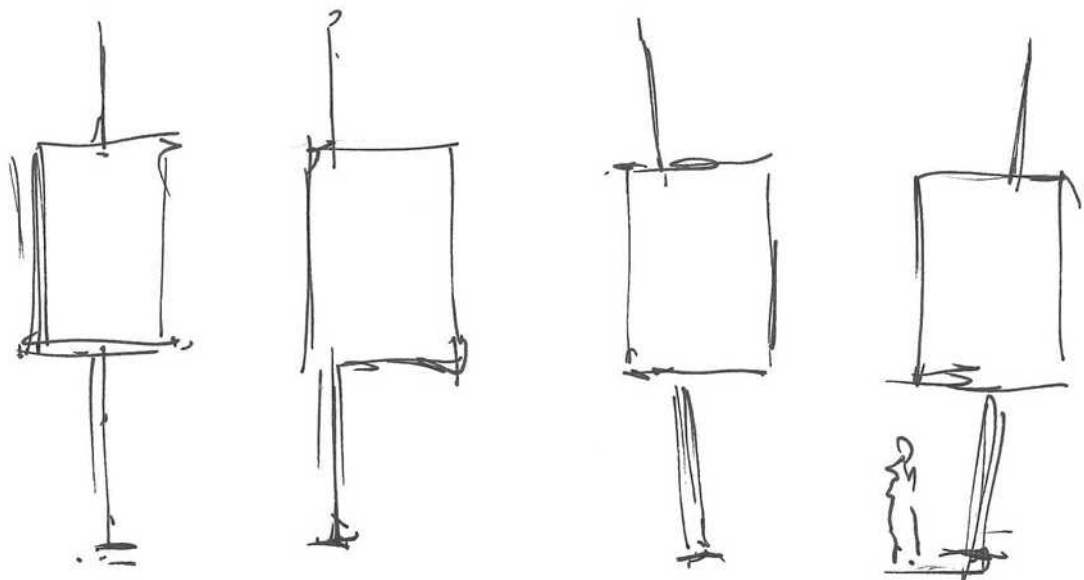
Job No. 9052 Issued 16/03/17

Drawn By ML Checked By

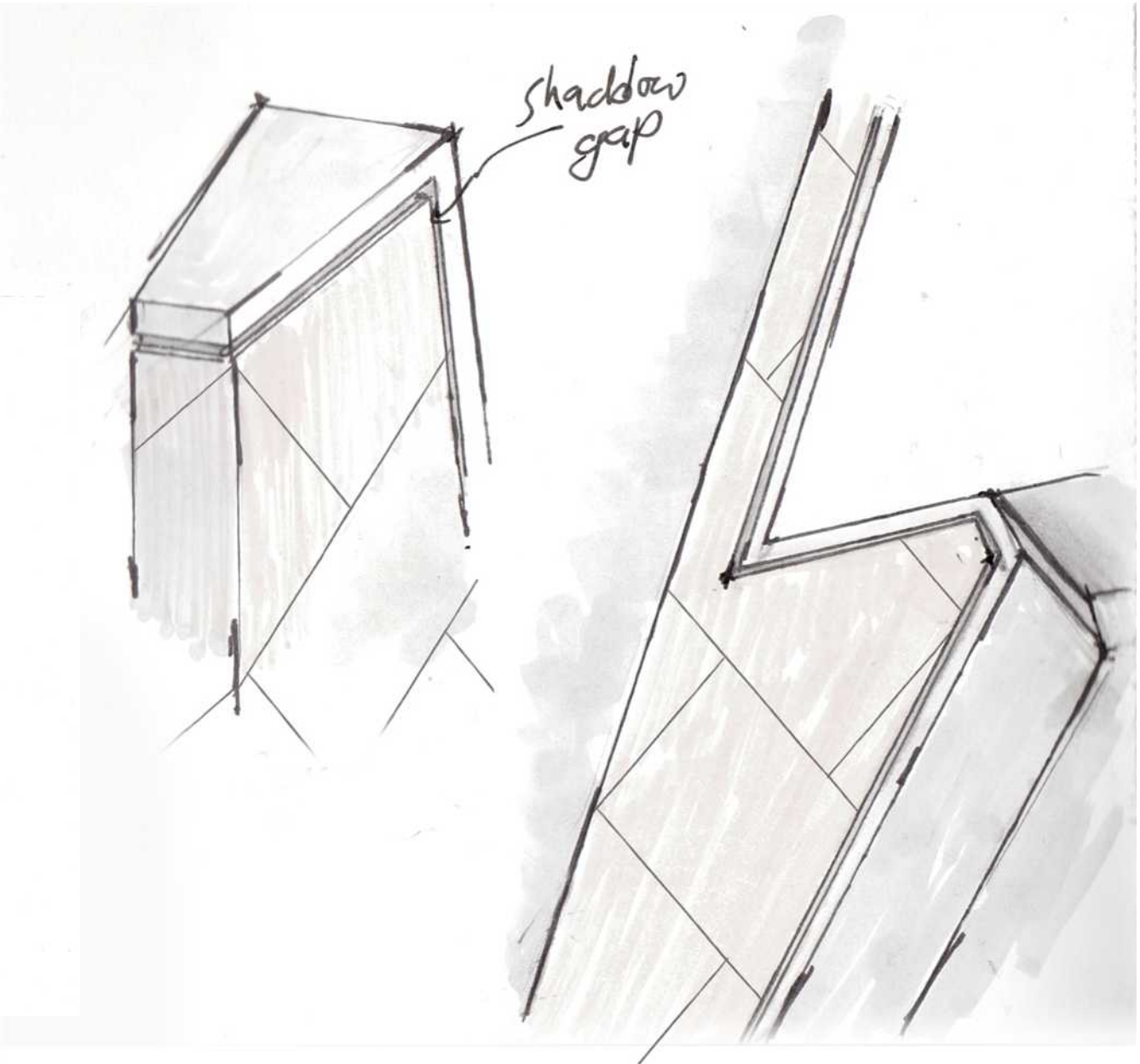
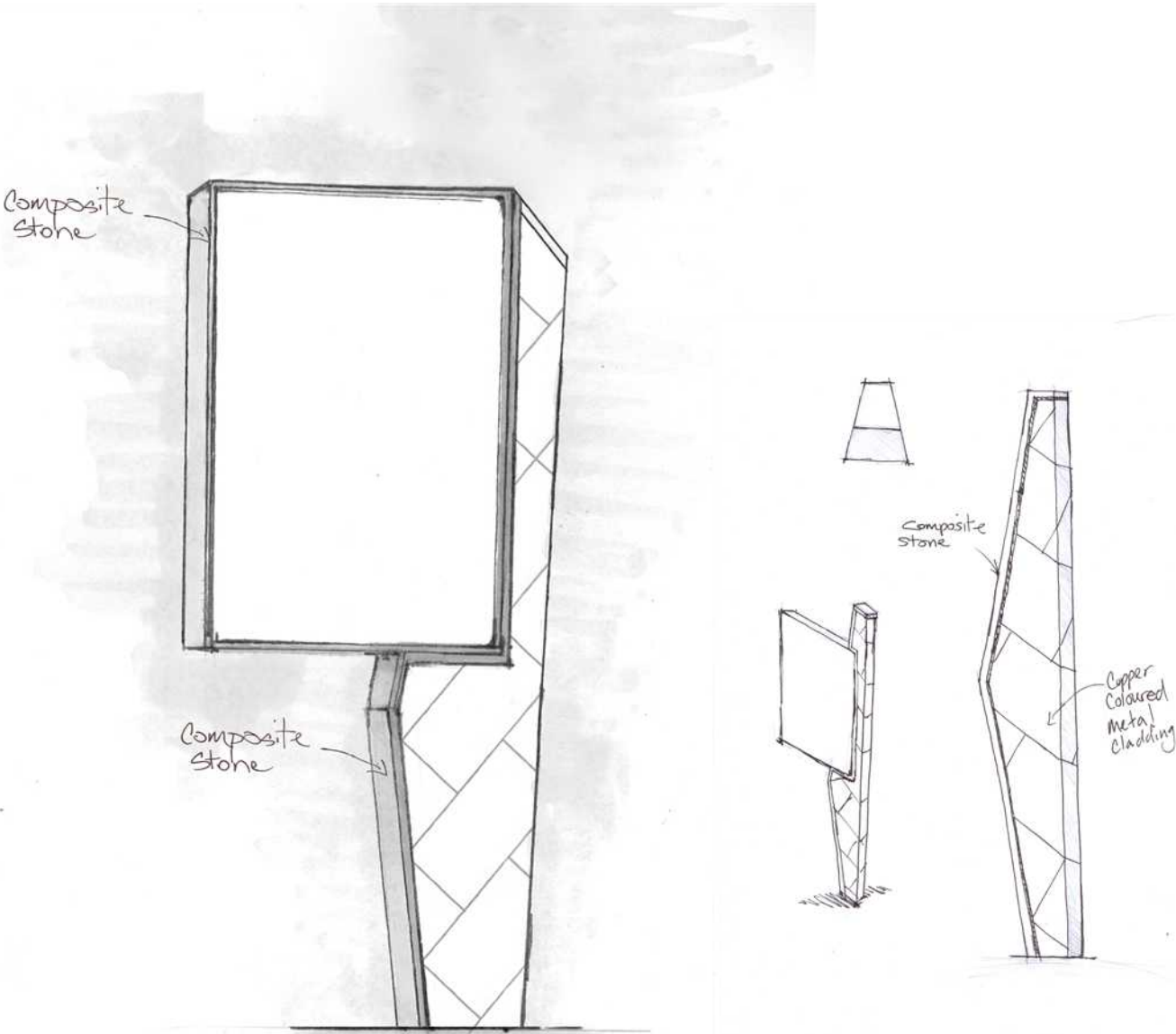
Signed By Scale 1:100 @ A3

- // Key
- 1. Media Screen
 - 2. Copper Coloured Metal
AISI 316 BA Stainless
Steel Colourtex Bronze 6WL
architectural blast.
 - 3. Composite Stone Cladding
 - 4. Area Set Aside For Logo Box

All information is to be checked on
site for accuracy and fit. Only
drawings with WD status with the
most recent revision are to be used
for construction. Report any
discrepancies and omissions to
Wildstone



22 Berghem Mews
Blythe Road
London
W14 0HN
www.wildstone.co.uk
020 7313 9571



// Title
Materials & Concept Development

// Project
Land at Euston Road corner of
Hampstead Road, NW1 2DU

Client
London Borough of Camden

Job No. 9052
Issued 16/03/17

Drawn By ML
Checked By

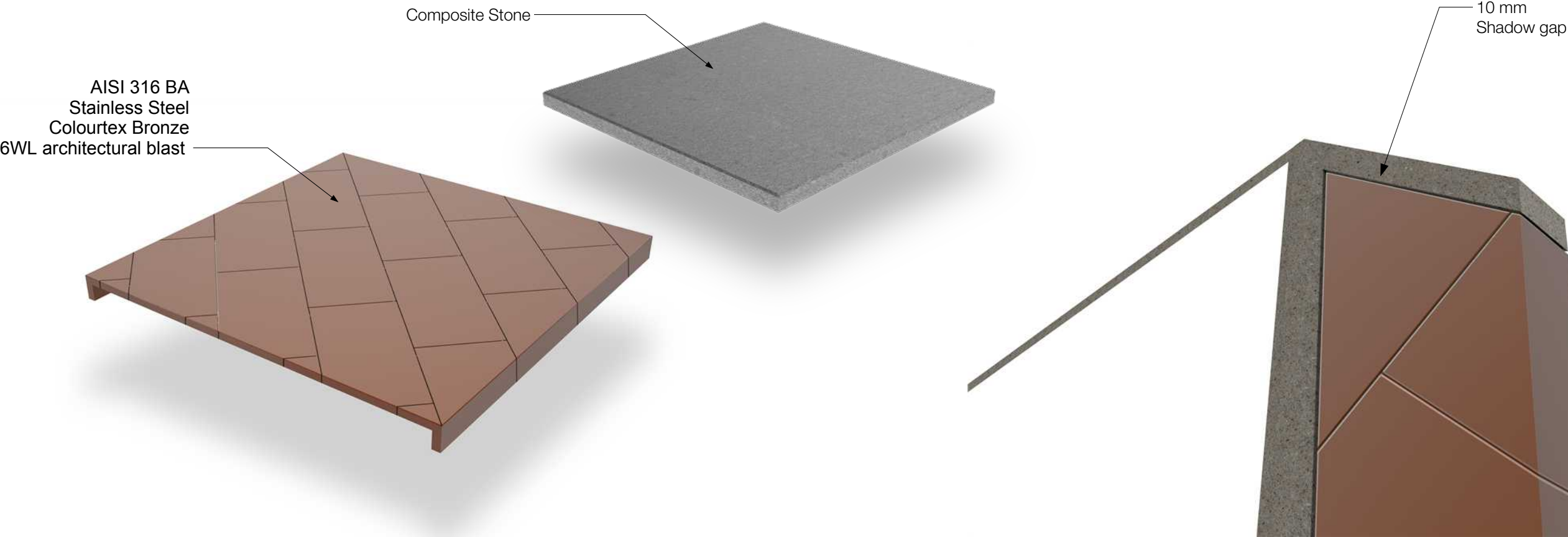
Signed By
Scale NTS @ A3

Key

All information is to be checked on site for accuracy and fit. Only drawings with WD status with the most recent revision are to be used for construction. Report any discrepancies and omissions to Wildstone



Materials



WILDSTONE

22 Berghem Mews
Blythe Road
London
W14 0HN
www.wildstone.co.uk
020 7313 9571

// Title
Design Sheet

// Project
Land at Euston Road corner of
Hampstead Road, NW1 2DU

Client
London Borough of Camden

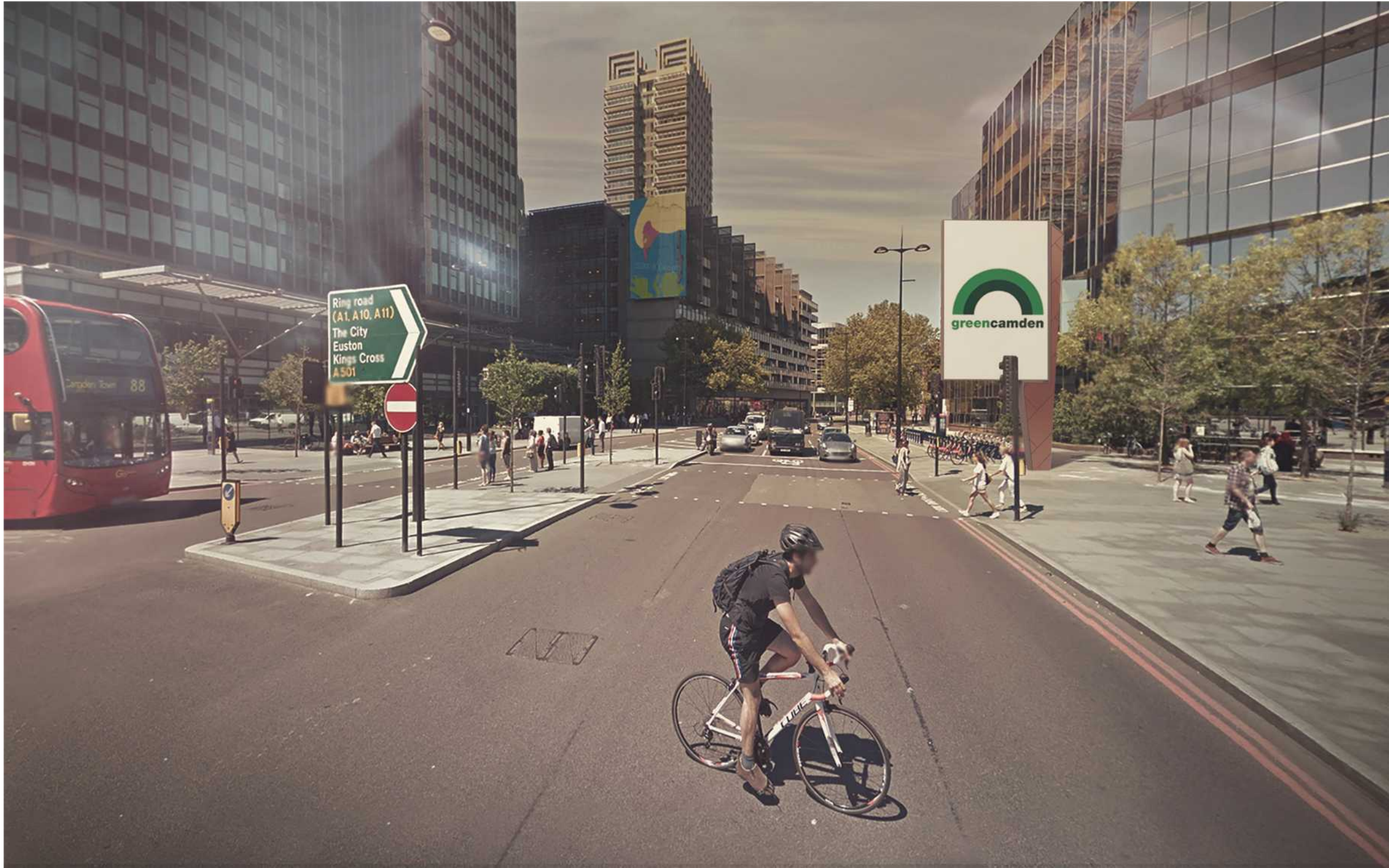
Job No. 9052 Issued 16/03/17

Drawn By ML Checked By

Signed By Scale NTS @ A3

Key

All information is to be checked on site for accuracy and fit. Only drawings with WD status with the most recent revision are to be used for construction. Report any discrepancies and omissions to Wildstone



WILDSTONE

22 Berghem Mews
Blythe Road
London
W14 0HN
www.wildstone.co.uk
020 7313 9571

Title
CGI

Project
Land at Euston Road corner of
Hampstead Road, NW1 2DU

Client
London Borough of Camden

Job No. Issued
9052 16/03/17

Drawn By Checked By
ML ML

Signed By Scale
NTS @ A3

Key

All information is to be checked on site for accuracy and fit. Only drawings with WD status with the most recent revision are to be used for construction. Report any discrepancies and omissions to Wildstone