

**33 Alfred Place**  
Design & Access Statement  
G-Research 24th March 2017



Rev	Description	Date	Checked
00	Issued for Planning	24/03/17	JP

## Contents

---

1.1	This Document	4
2.1	Site Location	5
2.2	Existing Roof Plan	6
2.3	Proposed Roof Plan	7
2.4	Proposed Roof Plant	8
3.1	Data Sheet - Air Handling Unit	9
3.2	Data Sheet - Air Conditioning unit	10
3.3	Data Sheet - Big Foot	11



## 1.1 This Document

---

Tatehindle have been invited by G-Research to submit a planning application to the London Borough of Camden in relation to the proposed expansion of plant area on the 5th Floor Roof of 33 Alfred Place, London, WC1E 7DP.

The proposed plant is necessary due to the Fit out works to the second and third floors of the property. G-Research, a tech company, intend to lease of these floors following completion of the fit out works.

This document should be read in conjunction with the proposed drawings:

- › PL(02)001 - Location Plan
- › PL(02)005 - Existing 5th Floor/Roof Plan
- › PL(02)015 - Proposed 5th Floor/Roof Plan

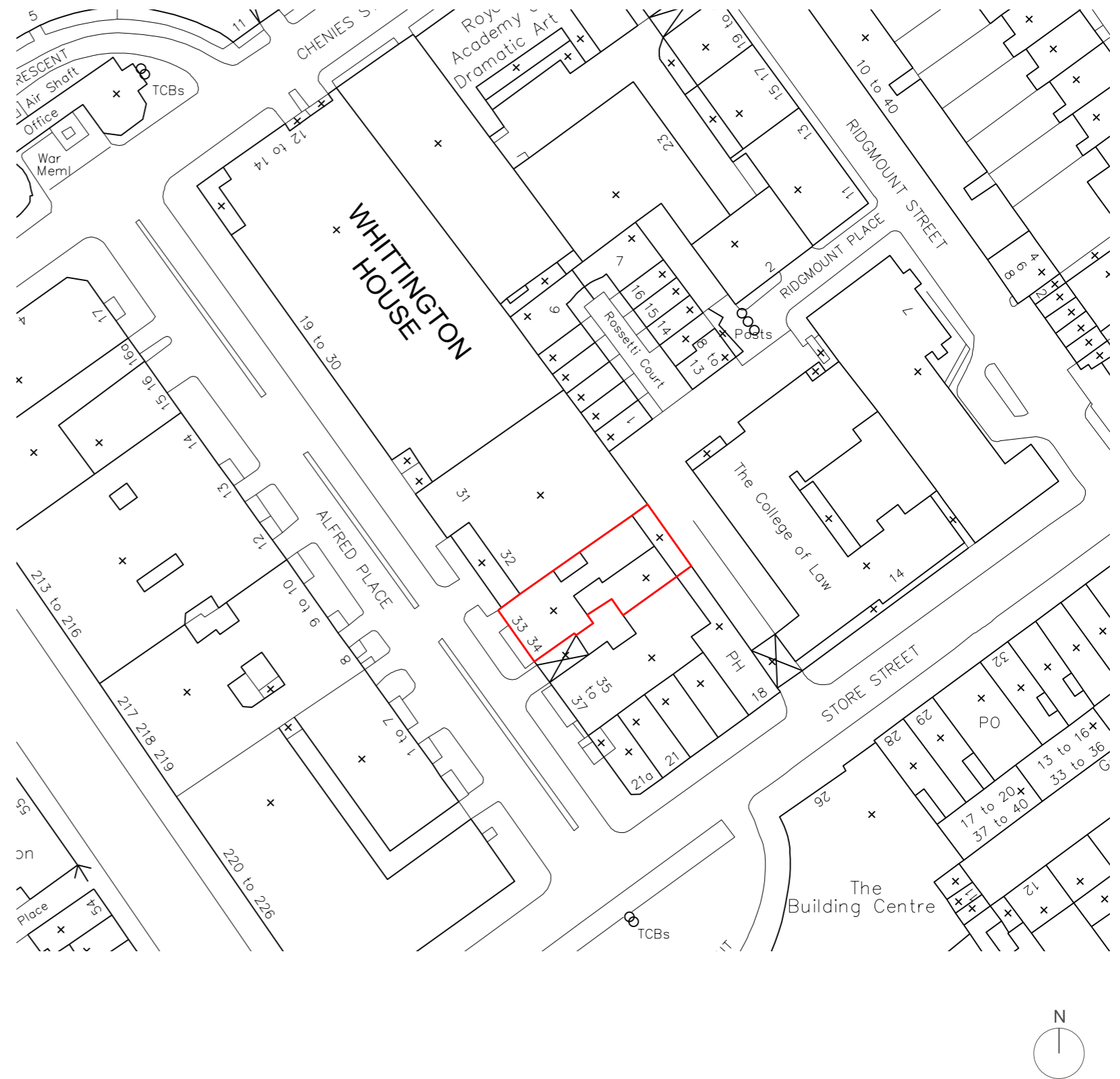


## 2.1 Site Location

Alfred Place runs roughly north-south parallel to Tottenham Court Road and one block to the east, between Chenies Street at the north end to Store Street at the south end.

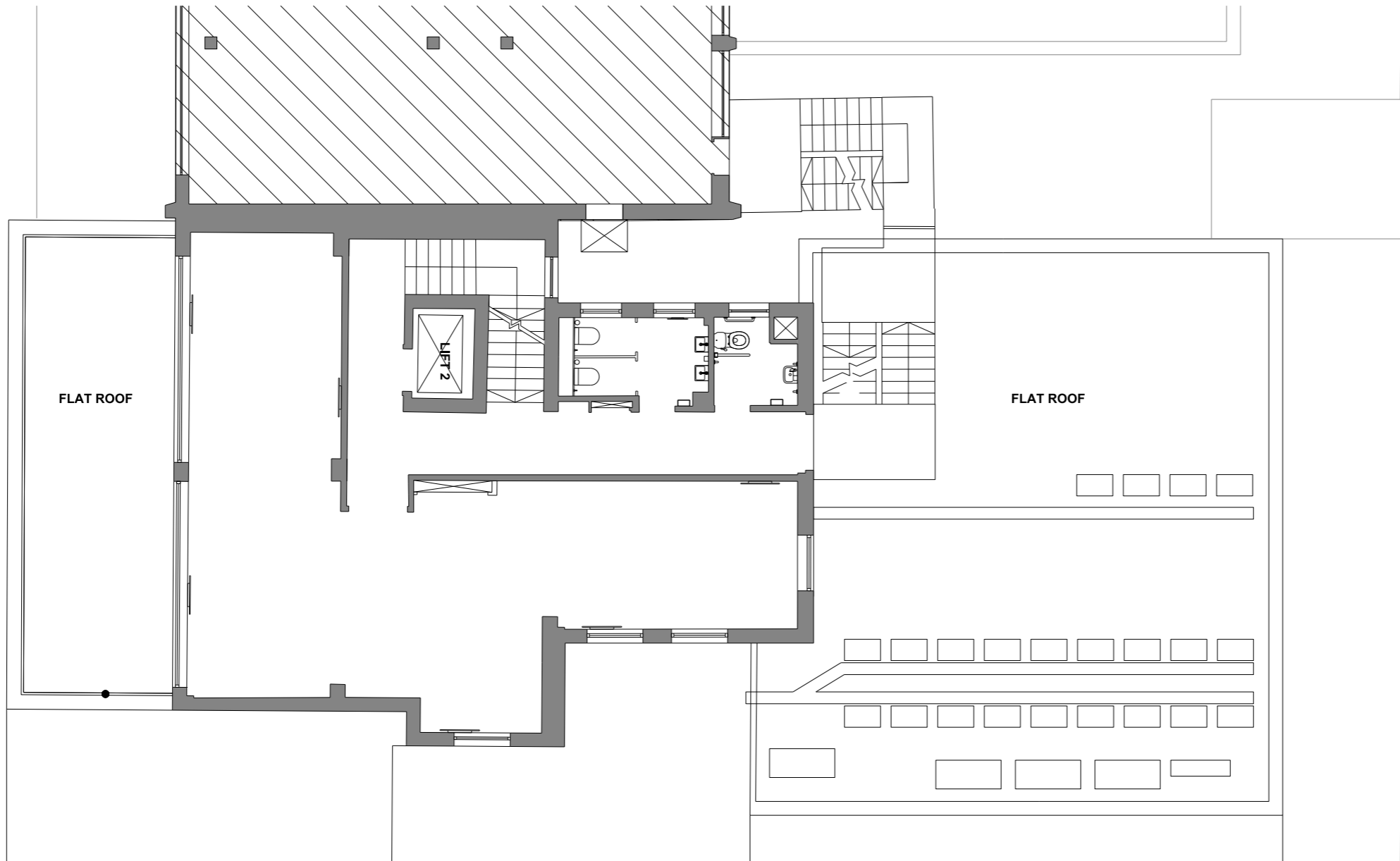
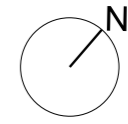
The properties facing the street are predominantly offices. The application premises are at the South end of the street on the east side.

The application relates only to the fifth floor roof of the premises. This is accessed from Alfred Place. Alfred Place is in the Bloomsbury conservation area and is designated part of the Central London area on the local planning authority proposals map.





## 2.2 Existing Roof Plan



Rev	Description	Date	Checked
00	Planning Issue	24-03-17	JP

Status  
**FOR INFORMATION**

Client  
**PLATINE HOLDINGS**

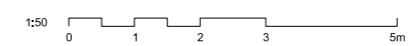
Project  
**33 ALFRED PLACE**

Drawing  
**FIFTH FLOOR  
EXISTING PLAN  
GA**

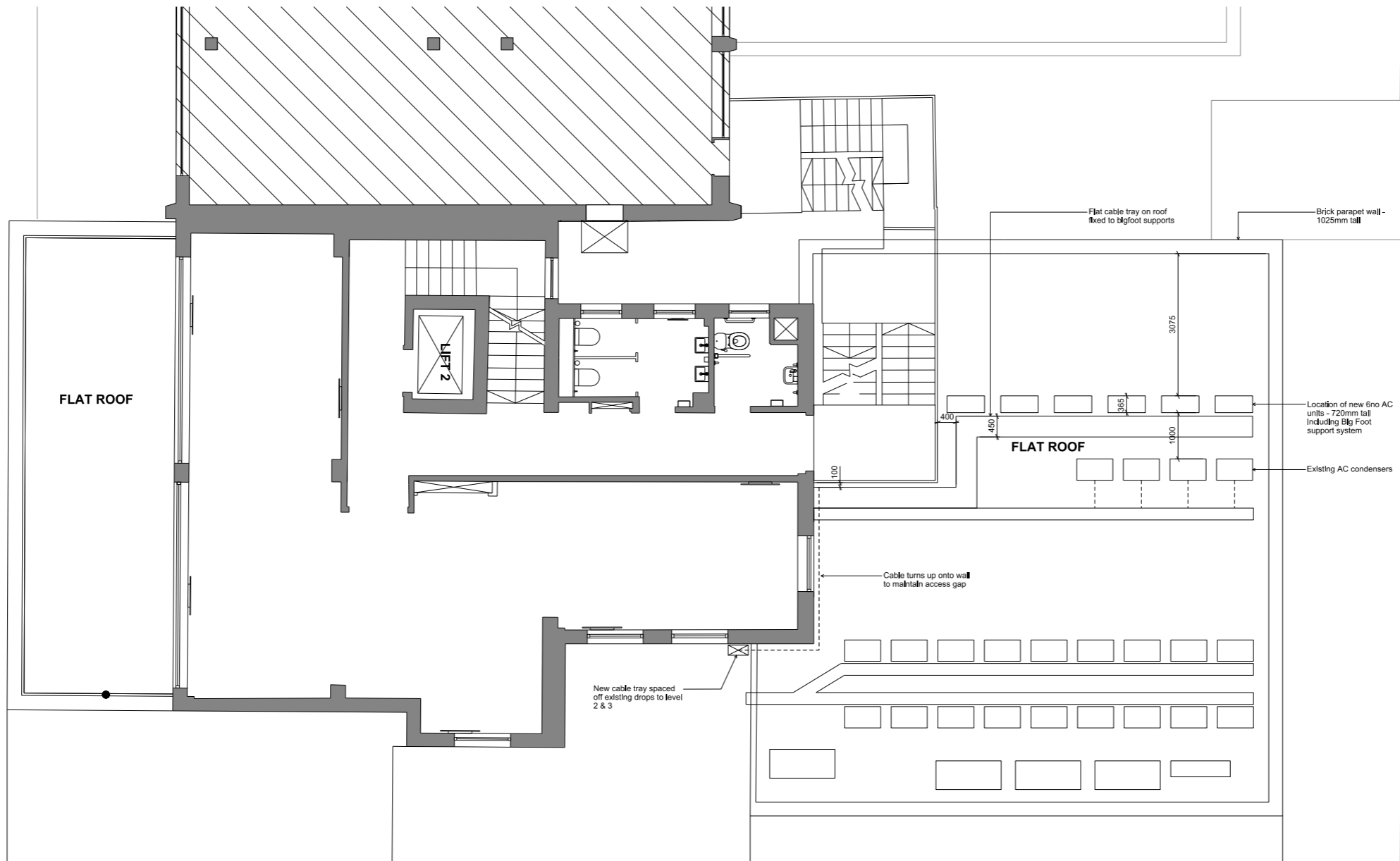
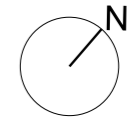
Scale	Drawn	Date	Checked
1:50@A1	FF	24-03-17	JP

Project no.	Dwg	Revision
15065	PL(03)005	00

**tatehindle**



## 2.3 Proposed Roof Plan



00	Planning Issue	24-03-17	FF
Rev	Description	Date	Checked

Status  
**FOR INFORMATION**

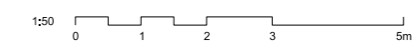
Client  
**PLATINE HOLDINGS**

Project  
**33 ALFRED PLACE**

Drawing  
**FIFTH FLOOR  
PROPOSED PLAN  
GA**

Scale	Drawn	Date	Checked
1:50@A1	FF	24-03-17	JP

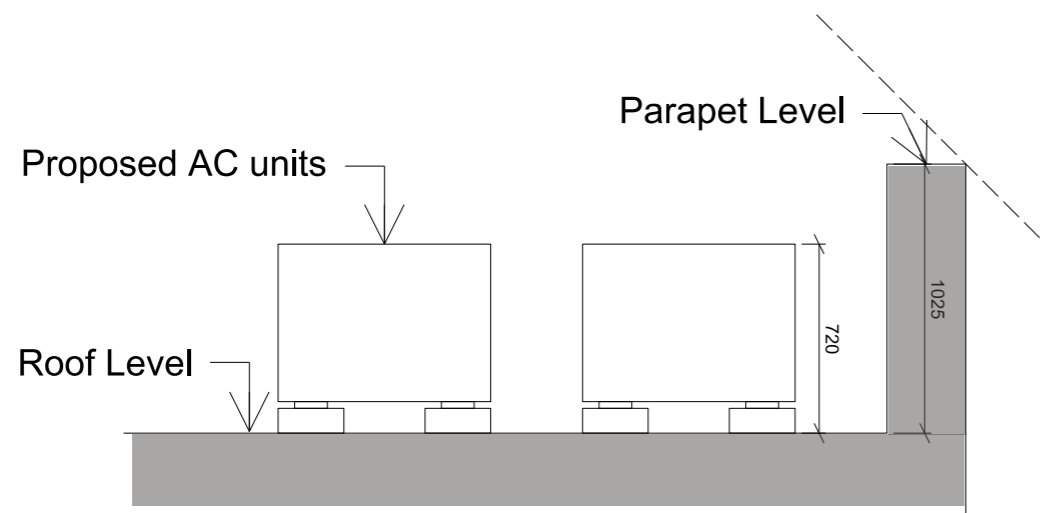
Project no.	Dwg	Revision
15065	PL(03)015	00



## 2.4 Proposed Roof Plant

The proposal entails the siting of six new air conditioning units which will service the second and third floors of the property. As the existing building currently holds air conditioning units on the fifth floor roof in a designated plant area, it has been proposed to site the units here.

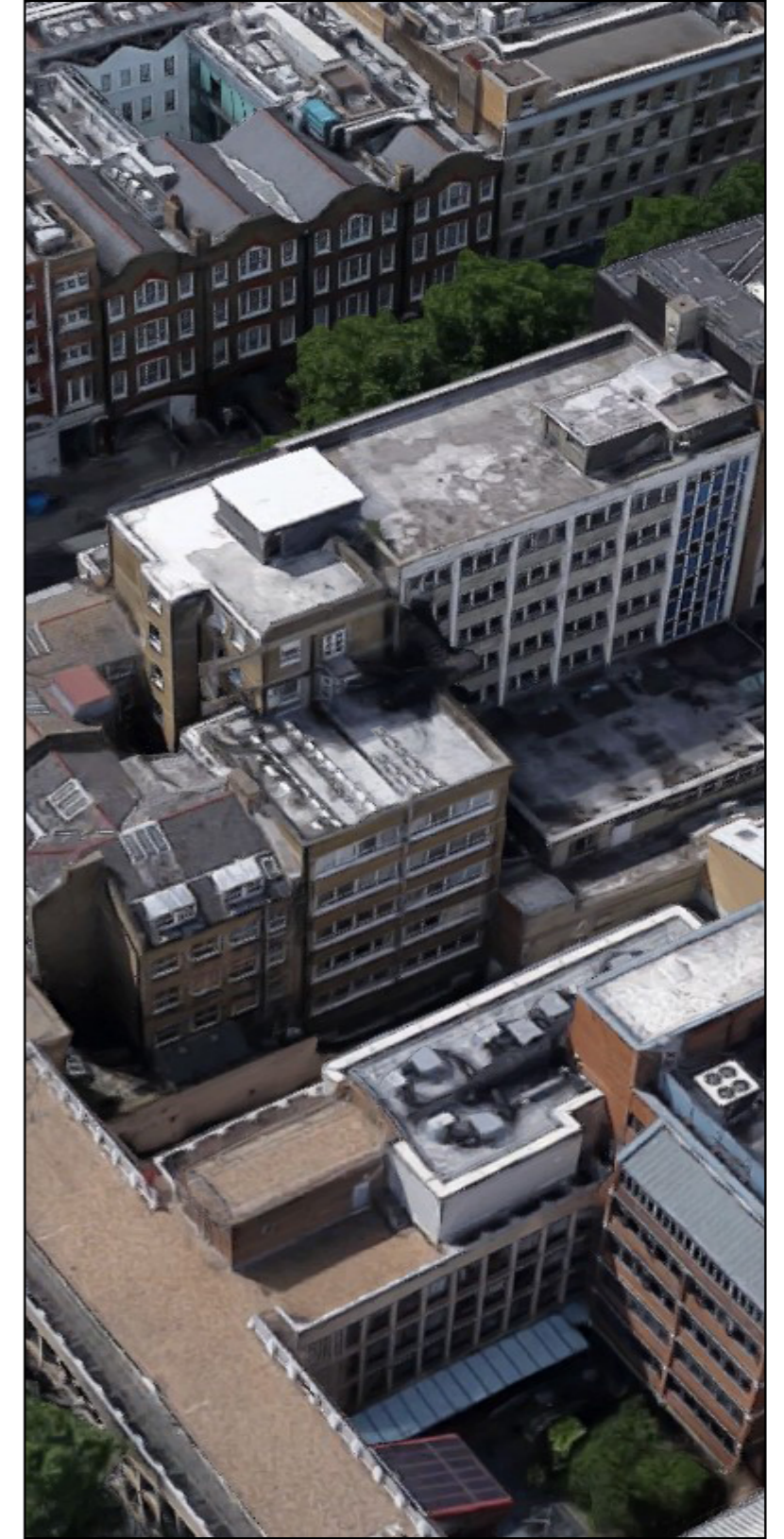
As can be seen in the existing and proposed aerial view mock-up, the units will have a limited visual impact on the roovescape. The sketch section below also indicated the height of the proposed units as 720mm, including the 'big-foot' mounting, therefore below the height of the parapet wall by 305mm. This indicates that the air conditioning units will be completely obscured from view at street level.



Proposed Sketch Section



Existing

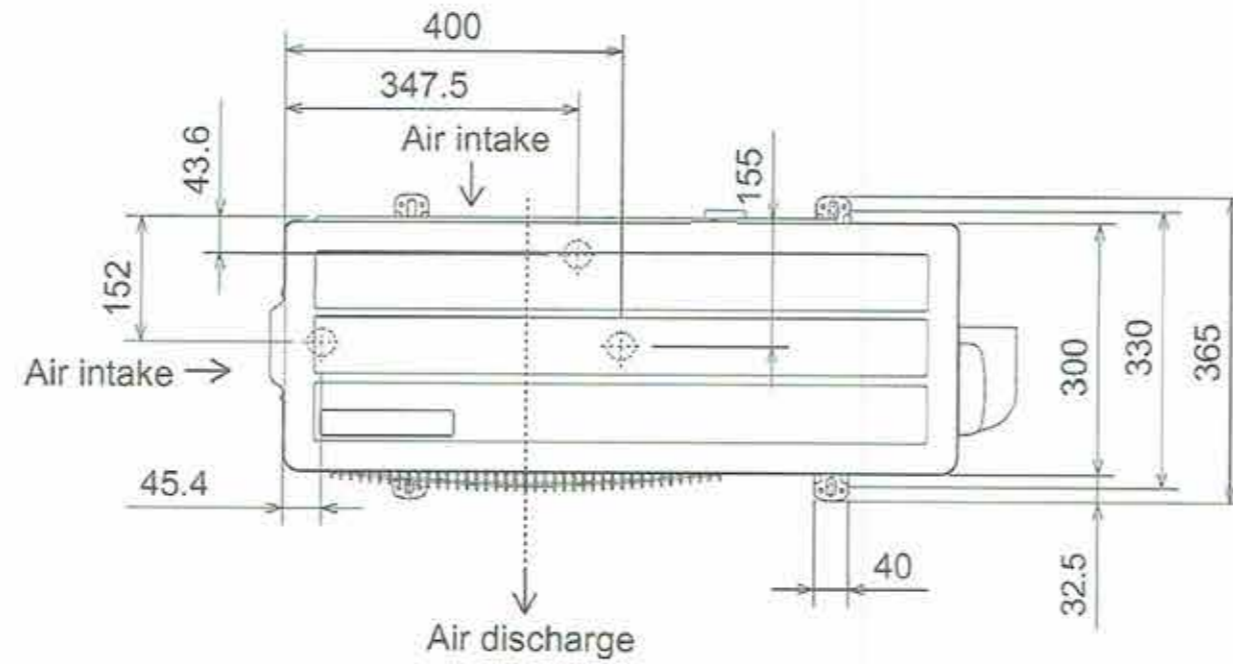


Proposed

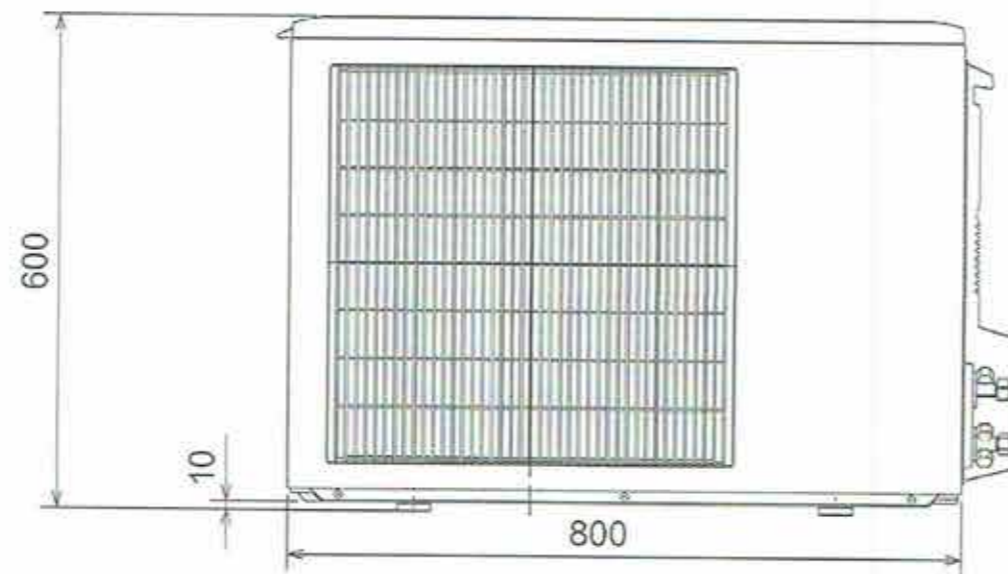


### 3.1 Data Sheet - Proposed External AC Unit

Upper View >



Front View >



Right Side View >



## 3.2 Data Sheet - Air Conditioning unit

### Air Conditioning

#### Product Information

**PKA-RP35HAL** (Single Phase)  
**Power Inverter Heat Pump**  
Wall Mounted System

Making a  
World of  
Difference



Our wide range of Power Inverters offer customers high seasonal efficiency, advanced control options and quiet operation, whilst providing greater flexibility and ease of installation.

#### Key Features

- Flat panel, compact indoor unit design
- Adjustable louvres for uniform air distribution
- Internal pipe connection to wall mounted unit for easy and neat installation



Air Conditioning | Heating  
Ventilation | Controls

### Air Conditioning

#### Product Information

**PKA-RP35HAL** (Single phase)  
**Power Inverter Heat Pump**  
Wall Mounted System

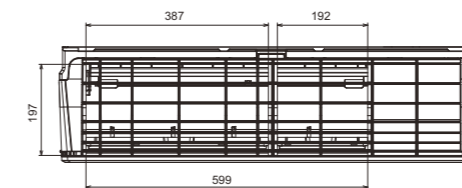
Making a  
World of  
Difference

PKA-RP - INDOOR UNITS		PKA-RP35HAL
CAPACITY (kW)	Heating (nominal)	4.1 (1.6-5.2)
	Cooling (nominal)	3.6 (1.6-4.5)
	Heating (UK)	3.5 (1.35-4.4)
	Cooling (UK)	3.3 (1.45-4.15)
SHF (nominal & UK)		0.81
COP / EER (nominal)		3.83 / 3.83
SCOP / SEER (BS EN14825)		3.9 / 5.7
ErP ENERGY EFFICIENCY CLASS Heating/Cooling		A / A+
AIRFLOW (l/s)	Lo-Mi-Hi	150-175-200
	Gas	12.7 (1/2")
PIPE SIZE mm (in)	Liquid	6.35 (1/4")
		36-40-43
SOUND PRESSURE LEVEL (dBA)		60
DIMENSIONS (mm) Width x Depth x Height		898 x 249 x 295
WEIGHT (kg)		13
ELECTRICAL SUPPLY		Fed by Outdoor Unit
FUSE RATING (BS88) - HRC (A)		6
INTERCONNECTING CABLE No. Cores		4

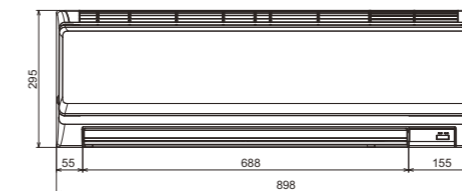
PUHZ-ZRP - OUTDOOR UNITS		PUHZ-ZRP35VKA
SOUND PRESSURE LEVEL (dBA) Heating/Cooling		46 / 44
SOUND POWER LEVEL (dBA) Cooling		65
WEIGHT (kg)		43
DIMENSIONS (mm) Width x Depth x Height		809 x 300 x 630
ELECTRICAL SUPPLY		220-240v, 50Hz
PHASE		Single
SYSTEM POWER Heating/Cooling (nominal)		1.07 / 0.94
INPUT (kW) Heating/Cooling (UK)		0.84 / 0.91
STARTING CURRENT (A)		4.0
SYSTEM RUNNING CURRENT (A) Heating/Cooling (MAX)		4.22 / 3.94 [13.4]
FUSE RATING (BS88) - HRC (A)		16
MAINS CABLE No. Cores		3
MAX PIPE LENGTH (m)		50
MAX HEIGHT DIFFERENCE (m)		30
CHARGE R410A (kg) - 30m		2.2

#### DIMENSIONS

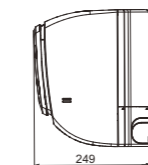
Upper View



Front View



Side View



Telephone: 01707 282880

email: [air.conditioning@meuk.mee.com](mailto:air.conditioning@meuk.mee.com) web: [www.airconditioning.mitsubishielectric.co.uk](http://www.airconditioning.mitsubishielectric.co.uk)

UNITED KINGDOM Mitsubishi Electric Europe Living Environmental Systems Division  
Travellers Lane, Hatfield, Hertfordshire, AL10 8XB, England General Enquiries Telephone: 01707 282880 Fax: 01707 278881  
IRELAND Mitsubishi Electric Europe Westgate Business Park, Ballymount, Dublin 24, Ireland  
Telephone: Dublin (01) 419 8800 Fax: Dublin (01) 419 8890 International code: (003531)



Follow us @meuk\_les  
Follow us @green\_gateway  
Mitsubishi Electric

### 3.3 Data Sheet - Big Foot

<b>PROJECT REF:</b>	Fix-it Foot	Material grade: BS EN 10219-1:2006 (S235JR). Welding standard: BS EN ISO 15614-1. Galvanizing standard: BS EN ISO 1461:2009 Reference specification document "Custom Fabrication Specification" (BF-SPEC-050411) for further information Reference specification document "Big Foot Systems Cross Bar Specification (BF-SPEC-230610) for further information			
<b>UNIT REF:</b>	N/A				
<b>FOOT PRESSURE:</b>	N/A				
<b>UDL:</b>	N/A				

Fix-it Foot											
Part No.			B6735	B6736	B6737	B9096	B9043	B9045	B9368	B6974	B6973
X	Overall Length	mm	250	400	600	1000	250	400	500	600	1000
		inches	9 13/16	15 3/4	23 5/8	39 3/8	9 13/16	15 3/4	19 11/16	23 5/8	39 3/8
Y	Overall Width	mm	180	180	180	180	130	130	130	180	180
		inches	7 1/16	7 1/16	7 1/16	7 1/16	5 1/8	5 1/8	5 1/8	7 1/16	7 1/16
Z	Height	mm	95	95	95	95	50	50	50	120	120
		inches	3 3/4	3 3/4	3 3/4	3 3/4	1 15/16	1 15/16	1 15/16	4 3/4	4 3/4
Weight		kg	2.4	3.5	5.8	9.9	1.3	2.1	2.5	10.2	17.7
Design Load		lbs	5.3	7.8	12.7	21.9	2.9	4.5	5.4	22.4	38.9
		kg	82	128	224	295	82	128	134	224	295
		lbs	181	282	494	650	181	282	295	494	650

Working conditions: Suitable for internal or external applications in temperatures between -40°C to +80°C

Mini Split Kit (Includes 2 Fix-it Feet & Fast Fix Bolts)		
Part No.	B9284	B9530
Size	600	1000

Material Specification				
Part/Description	Material	Regulation Conformance	Density	
			kg/m3	lbs/ft3
Fix-it Foot	Rubber	BS7188:1989	650-1020	41-64
	Aluminium	-	2700	169

Installation and application considerations should include health, safety and environmental needs, regulations and standards, codes of practice, climate conditions, installation location, product orientation, evaluation of the roof structure, composition, surface and condition, ancillary and complimentary products and materials. Big Foot Systems recommend that all rooftop products are handled and installed by suitably qualified persons. All scheme designs are based on the use of Big Foot Systems' products and materials only. Terms and conditions available on request.	REV <b>B</b>	DATE: 20/10/2016 DRAWN: A SIMMANS CHECKED: S BIRCH	SCALE: 1:20 DIMENSIONS IN mm U.O.S TOLERANCES: 0.0 ± 0.5mm U.O.S SHEET 1 OF 1	<b>A3</b>	TITLE: <b>Fix-it Foot Product Information Sheet</b> DWG No. <b>BFP-FIF.dwg</b> THIS DRAWING IS COPYRIGHT AND THE PROPERTY OF BIG FOOT SYSTEMS LIMITED	
---	-----------------	--	--	-----------	---	--

B9043

B6735

B9045

B9368

B6736

B6737  
with B6974

B9096  
with B6973

B9171  
Fast Fix Fixing Bolt (M10)



