

This drawing and design is for use solely in connection with the project described below. The drawing and design is the copyright of Avanti Architects Ltd. and must not be re-issued, loaned or copied without written consent. All dimensions and setting out to be checked on site before construction. This drawing is to be read in conjunction with all other information relevant to the project. Any apparent discrepancy is to be brought to the attention of Avanti Architects Ltd. Do not scale from this drawing.

Notes

- KEY:
- TO BE READ IN CONJUNCTION WITH
 - a. SPECIFICATION
 - b. GA33 SERIES
 - c. INTERIOR SPECIALIST JOINERY REPORT 16032-AA-07-G4-RPT01
 - d. INTERIOR SANITARY FIXTURES REPORT 16032-AA-07-G4-RPT02
- EXISTING PARTITION
 - NEW PARTITION see specification K10/125A
 - NEW PARTITION FIRED RATED 60MINS see specification K10/125A
 - NEW PARTITION THICKNESS TO MATCH EXISTING see specification K10/125B
 - MOISTURE RESISTANT PLASTERBOARD see specification K10/125A & K10/155A
 - WATER RESISTANT WEDI BOARD see specification K10/155A
 - FINISHED FLOOR LEVEL TO BE CONFIRMED ON SITE
 - GROUP 2 FURNITURE
 - NOTICE BOARD see specification N10/195A

Revision	Date	By	Description
H	10/02/17	GD	FOR APPROVAL Bulkhead for ventilation omitted
G	10/02/17	GD	Status updated
F	22/02/16	GD	FOR APPROVAL north point & scale bar added
E	06/12/16	GD	Amendments clouded
D	05/12/16	GD	Amendments clouded
C	30/11/16	GD	Tender Issued for billing
B	25/11/16	GD	Drawing reformatted, 16032-GA-G20-LG, 00 & 03 omitted
A	17/11/16	GD	

Scale	Size	Date First Issue
1:50	A1	28/10/16

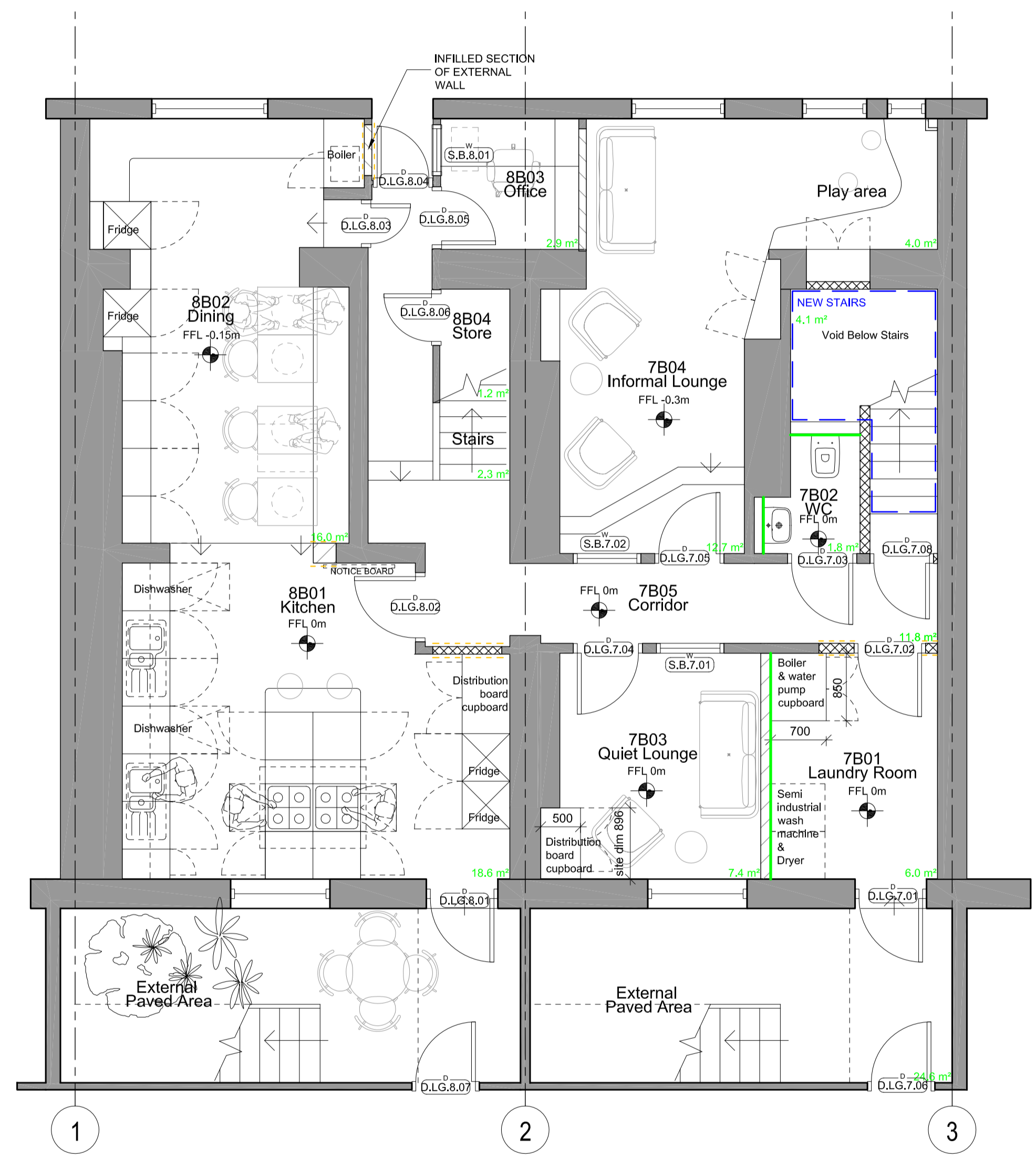
Drawn by	Checked by
GD	DF

Project
7-8 Sandwich Street GOSH Parents Accommodation

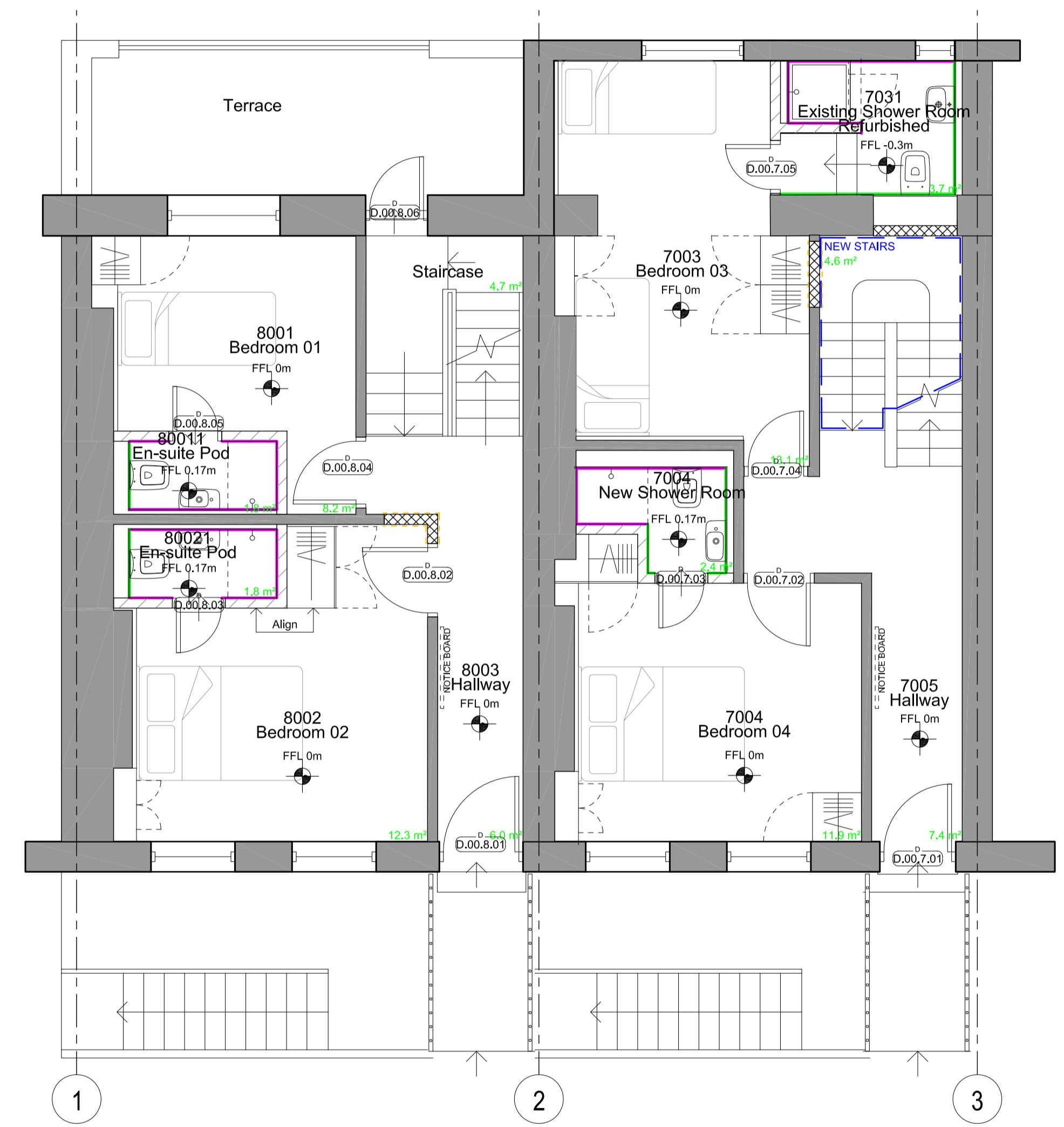
Drawing
Lower Ground & Ground Floor General Arrangement Plan

Drawing number 16032-AA-G20-01 **Revision** H

Status
FOR APPROVAL



Lower Ground



Ground Floor