

This drawing and design is for use solely in connection with the project described below. The drawing and design is the copyright of Avanti Architects Ltd, and must not be re-issued, loaned or copied without written consent. All dimensions and setting out to be checked on site before construction. This drawing is to be read in conjunction with all other information relevant to the project. Any apparent discrepancy is to be brought to the attention of Avanti Architects Ltd. Do not scale from this drawing.

Notes
 IMPORTANT:
 LIGHTING LAYOUT FOR DESIGN INTENT ONLY, TO BE CONFIRMED WITH MSE ENGINEER

KEY:
 TO BE READ IN CONJUNCTION WITH
 a. SPECIFICATION
 b. GA20 SERIES
 c. GA33 SERIES
 d. INTERIOR SPECIALIST JOINERY REPORT
 16032-AA-07-G4-RPT001
 b. INTERIOR SANITARY FIXTURES REPORT
 16032-AA-07-G4-RPT002

PLASTERBOARD EMULSION PAINT THROUGHOUT
 EXISTING PLASTERBOARD
 see specification K10/220A and M60/110A

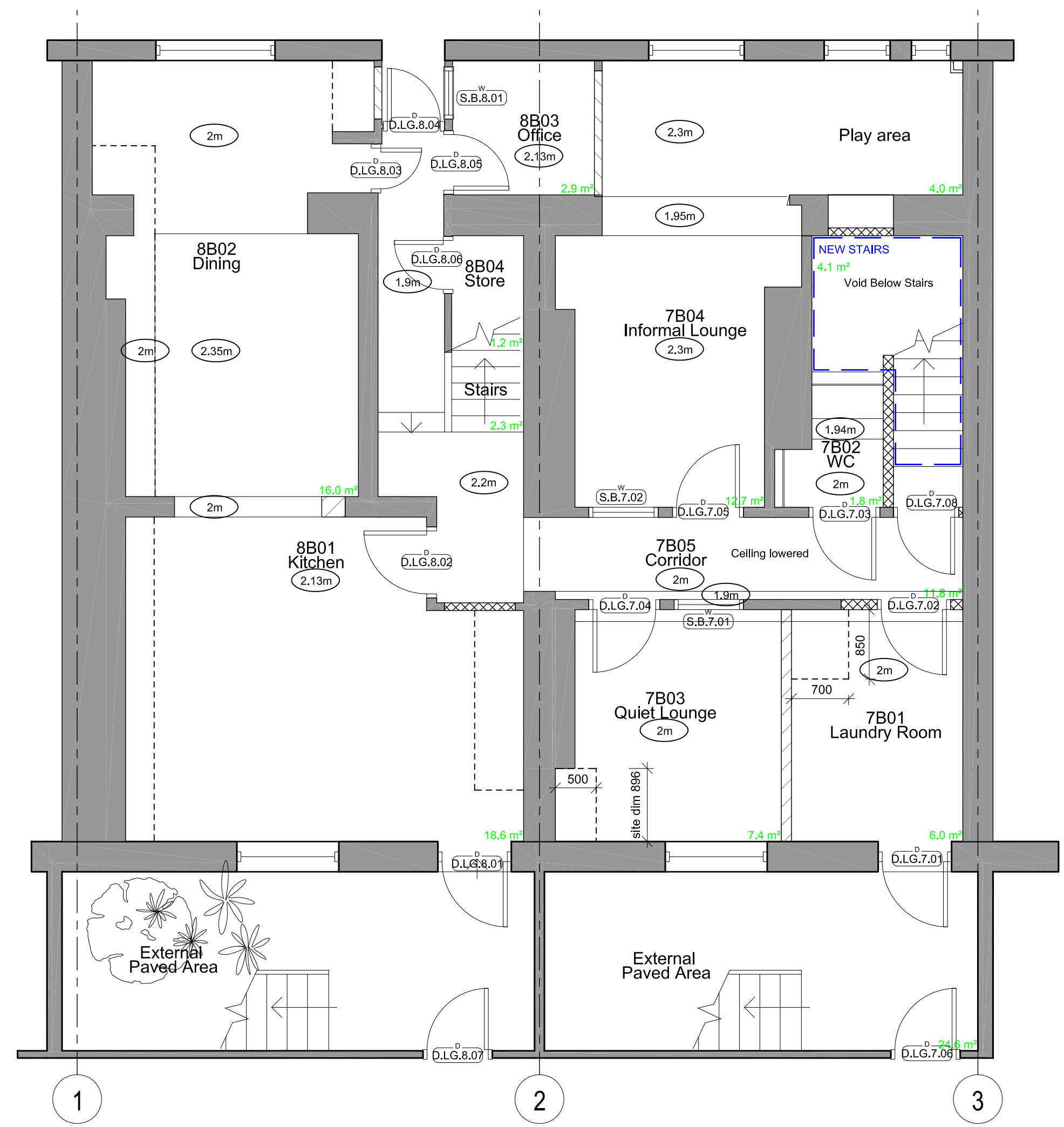
MOISTURE RESISTANT PLASTERBOARD & PAINT TO ALL EN-SUITES & SHOWER ROOMS
 see specification K10/220B and M60/120A

HPL BULKHEAD
 see specification K13/130A

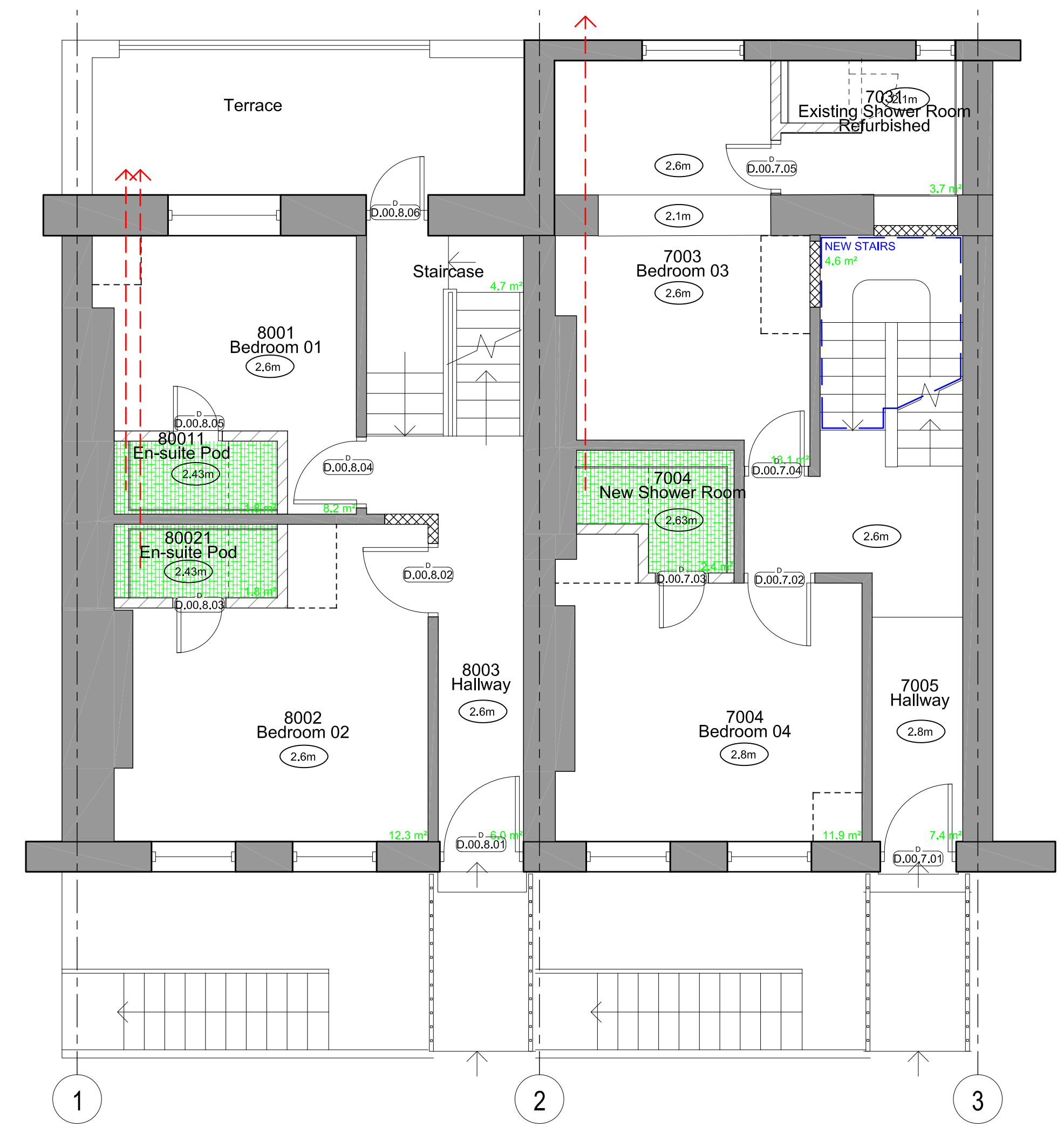
2m CEILING HEIGHT ABOVE FFL
 AS SURVEY DRAWINGS ACTUAL CEILING HEIGHT TO BE CONFIRMED ON SITE

--- FULL HEIGHT/HIGH LEVEL STORAGE
 see INTERIOR SPECIALIST JOINERY REPORT 16032-AA-07-G4-RPT001

-> INDICATIVE PATH OF VENT DUCT FROM SHOWER ROOM TO EXTERNAL WITHIN DEPTH OF FLOOR BUILD-UP (CONCEALED - NO ACCESS REQUIRED THROUGH CEILING IN BEDROOMS)



Lower Ground



Ground Floor

Revision	Date	By	Description
E	10/02/17	GD	FOR APPROVAL Bulkhead for ventilation omitted
D	10/02/17	DF	Status updated
C	16/12/16	DF	Ceiling type added
B	30/11/16	DF	Issued for tender
A	29/11/16	DF	Issued for billing

Scale	Size	Date First Issue
1:50	A1	17/11/16
Drawn by	Checked by	
GD	DF	

Project
 7-8 Sandwich Street GOSH Parents Accommodation

Drawing
 Lower Ground & Ground Floor Ceiling Plan

Drawing number 16032-AA-G332-01 **Revision** E

Status
 Tender

