


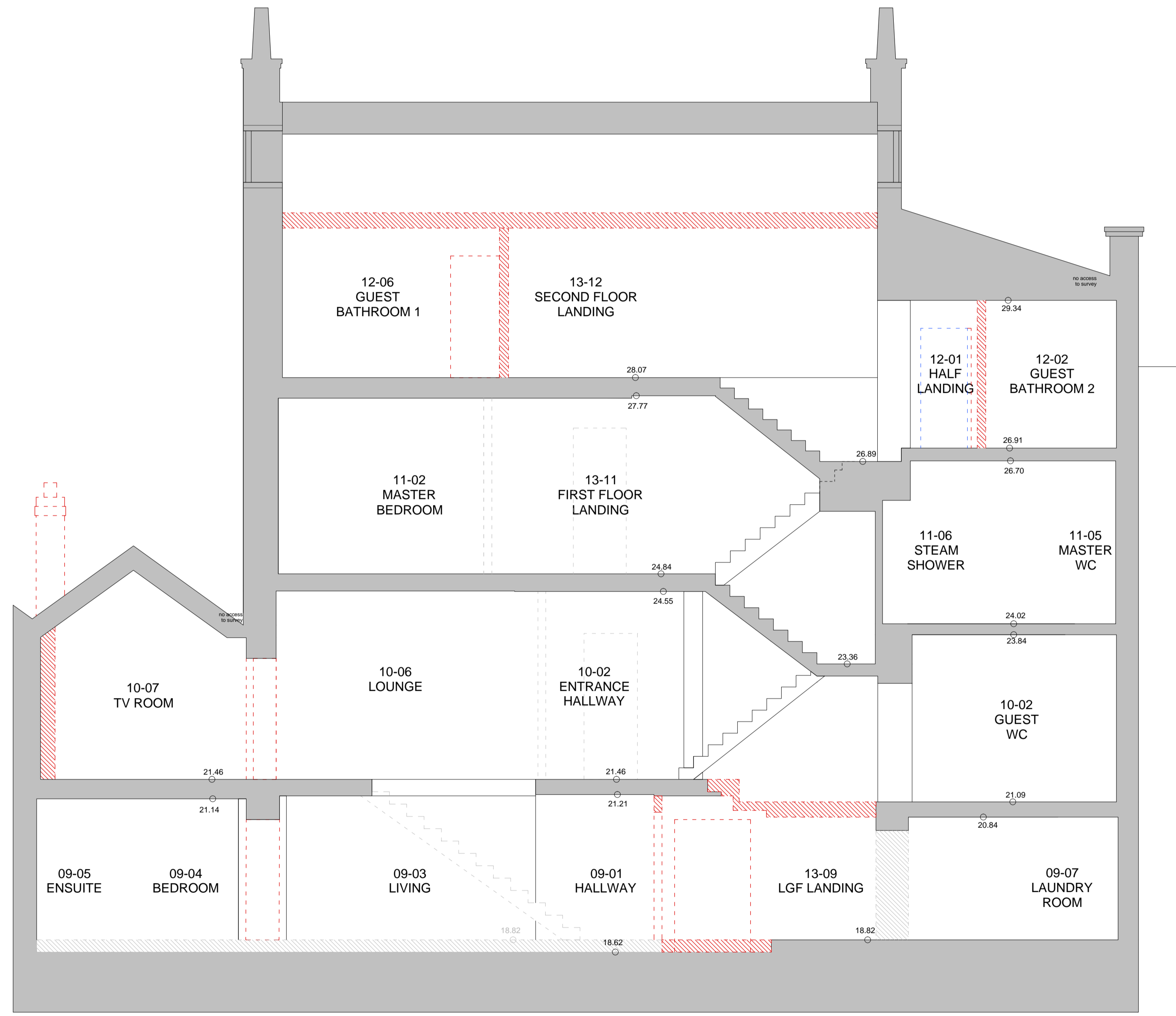


DO NOT SCALE FROM THIS DRAWING
 DRAWING TO BE READ IN CONJUNCTION WITH ALL OTHER ARCHITECTS
 AND ENGINEER'S CONTRACT DRAWING & SPECIFICATIONS.
 ANY DISCREPANCIES MUST BE BROUGHT TO THE ATTENTION OF THE
 ARCHITECT IMMEDIATELY.
 THE CONTRACTOR MUST VERIFY ALL DIMENSIONS BY SITE
 MEASUREMENT BEFORE ORDERING MATERIALS OR MANUFACTURING
 COMPONENTS.
 SUBSTITUTE MATERIALS & PRODUCTS TO THOSE NAMED WILL BE
 ACCEPTABLE IF PROVEN TO BE OF EQUAL OR HIGHER PERFORMANCE
 AND NOT IN CONFLICT WITH OTHER ELEMENTS.

- NOTES
 KEY:
-  Consented Demolition associated with Application ref: 2013/9112L & 2014/7932P
 -  Regularisation
 -  Proposed demolition

Note:
 For windows and doors please refer to schedules.



17.0m DATUM
 0m 1m 2m 3m 4m 5m

SECTION G-G

REV	DATE	DESCRIPTION
-	29.03.16	For Pre Application
A	06.05.16	General updates
B	18.11.16	For Planning
C	28.02.17	For Planning

FOR PLANNING

JOB TITLE
Keats Grove
 Hampstead

DRAWING TITLE
 Section GG
 Proposed Demolition

JOB No	DWG No	REV
546	D16	C

DRAWN BY	SCALE (AT A1)	DATE
RFB	1:50 (1:100@A3)	Mar16