

DO NOT SCALE FROM THIS DRAWING
DRAWING TO BE READ IN CONJUNCTION WITH ALL OTHER ARCHITECTS AND ENGINEER'S CONTRACT DRAWING & SPECIFICATIONS. ANY DISCREPANCIES MUST BE BROUGHT TO THE ATTENTION OF THE ARCHITECT IMMEDIATELY.
THE CONTRACTOR MUST VERIFY ALL DIMENSIONS BY SITE MEASUREMENT BEFORE ORDERING MATERIALS OR MANUFACTURING COMPONENTS.
SUBSTITUTE MATERIALS & PRODUCTS TO THOSE NAMED WILL BE ACCEPTABLE IF PROVEN TO BE OF EQUAL OR HIGHER PERFORMANCE AND NOT IN CONFLICT WITH OTHER ELEMENTS.

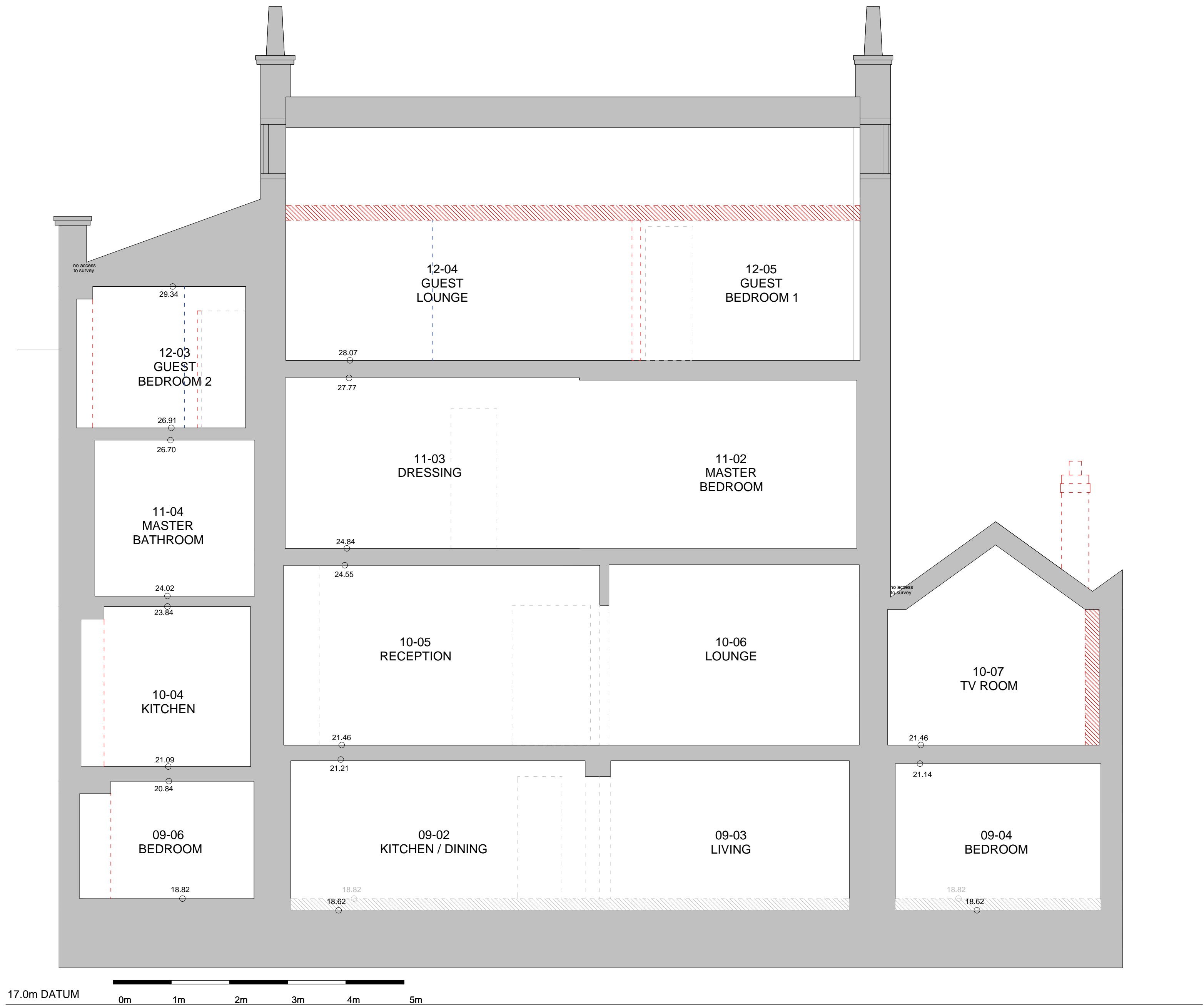
NOTES
KEY:

Consented Demolition associated with Application
ref: 2013/9112/L & 2014/7932/P

Regularisation

Proposed demolition

Note:
For windows and doors please refer to schedules.



SECTION C-C

REV	DATE	DESCRIPTION
-	29.03.16	For Pre Application
A	06.05.16	General updates
B	18.11.16	For Planning
C	28.02.17	For Planning

FOR PLANNING

JOB TITLE		
Keats Grove		
Hampstead		
DRAWING TITLE		
Section CC		
Proposed Demolition		
JOB No	DWG No	REV
546	D12	C
DRAWN BY	SCALE (AT A1)	DATE
RFB	1:50 (1:100@A3)	Mar16

RICHARD GRIFFITHS ARCHITECTS

5 Maidstone Mews, 72-76 Borough High Street, London SE1 1GN
T +44(0)20 7357 8788 | F +44(0)20 7403 7887
E admin@rgarchitects.com | www.rgarchitects.com